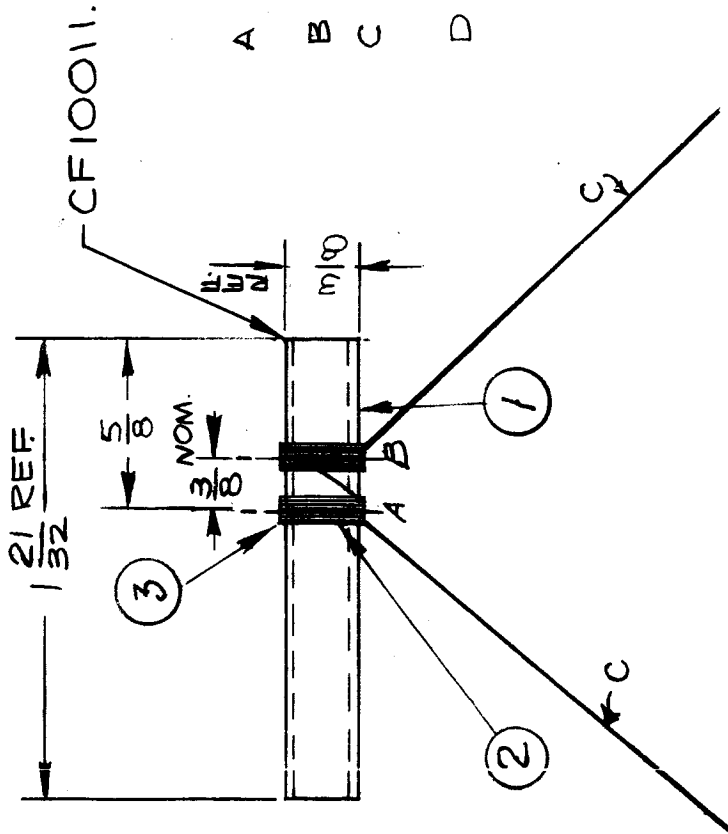


IF IT IS FOUND DESIRABLE TO CHANGE ANY TOLERANCE OR OTHER DETAIL SPECIFIED ON THIS DRAWING NOTIFY THE PURCHASER PROMPTLY.

MAXIMUM ALLOWABLE TOLERANCES HAVE BEEN DETERMINED AND DEVIATIONS WILL BE CAUSE FOR REJECTION. REMOVE ALL BURRS AND SHARP EDGES



- 245 μ A PYE WOUND FILTER COIL.
WINDING DATA:-
 A 6 TURNS CLOSE SPACED - RETRACE & WIND 3 TURNS ON TOP.
 B - CONTINUE FROM A & WIND SIMILAR PYE.
 C LEAVE 2 1/2" FOR CONNECTIONS - CHECK L ON Q METER.
 D ADJUST DISTANCE OF B FROM A TO OBTAIN CORRECT VALUE OF L.

CL-10001/B
 USED ON
 MODEL PROJECT NO. ASSY. NO. DATE
 AMC 6-Z 9.8.55
 AMC 6-3

REQ. ITEM	PART NO.	DESCRIPTION	SYMBOL
X 3	GL-10001	RADIO SERVICE CEMENT	
X 2	WI-10001-11	WIRE #30 D.C.C	
1	CF-10011	COIL FORM	
STOCK SIZE			
MATERIAL		TMC (Canada) LIMITED ONTARIO	
WEIGHT PER PC.		COILS RF	
TYPE & TEMPER		FX10002	
HEAT TREAT. SPEC.		K/NF DRAWN T.H. CHECKED FINAL APPROVAL	
FINISH & SPEC. NO.		(A-10044) CL-10001/B	

ISSUE ITEM	CHANGED FROM	DATE	CN. NO.	DRAFTS CHECKER	ENG. APP.
A	1	1960		JC	AM.S.
	2	1960		JPC	M.L.G.

TOLERANCES
 DEC. DIM. \pm
 FRAC. DIM. \pm
 ANGULAR DIM. \pm

DRILL, PUNCH, COMMERCIAL STOCK SIZES AND MANUFACTURERS TOLERANCES ARE NOT INCLUDED.

STANDARD DRAWING

CL-10003-A

IF IT IS FOUND DESIRABLE TO CHANGE ANY TOLERANCE OR OTHER DETAIL SPECIFIED ON THIS DRAWING NOTIFY THE PURCHASER PROMPTLY.

MAXIMUM ALLOWABLE TOLERANCES HAVE BEEN DETERMINED AND DEVIATIONS WILL BE CAUSE FOR REJECTION. REMOVE ALL BURRS AND SHARP EDGES

USED ON	
MODEL	PROJECT NO.
DATE	ASSY. NO.

A 10095 / 4.8.1956

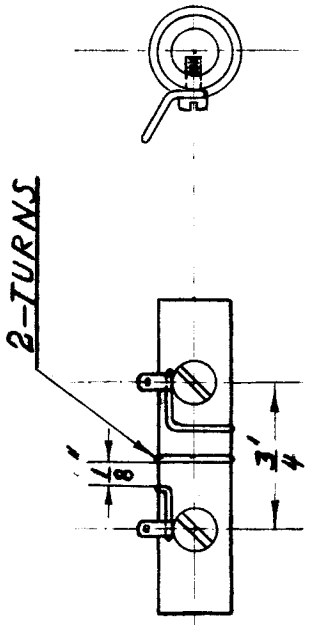
NOTICE TO PERSONS RECEIVING THIS DRAWING

THE TECHNICAL MATERIEL CORPORATION claims proprietary right in the material disclosed hereon. This drawing is issued in confidence for engineering information only and may not be reproduced or used to manufacture anything shown hereon without permission from THE TECHNICAL MATERIEL CORPORATION to the user. This drawing is loaned for mutual assistance and is subject to recall at any time.

Property of:
 THE TECHNICAL MATERIEL CORPORATION
 MAMARONECK, NEW YORK

SUPERSEDED

BY A10095



REQ. ITEM	PART NO.	DESCRIPTION	SYMBOL
		TMC (Canada) LIMITED OTTAWA	
STOCK SIZE		COIL	
MATERIAL	WEIGHT PER PC.	AMC 6-2/70	AMC 6-3/70
TYPE & TEMPER		<i>Pat. Mfgd</i>	
HEAT TREAT. SPEC.			
FINISH & SPEC. NO.			CL-10003 A

ISSUE ITEM	CHANGED FROM	DATE	CN. NO.	DRAFTS	CHECKER	ENG. APP.
A 1	CLERICAL CHANGE	9.2.64	-	WOB	MP	

TOLERANCES		SCALE	FULL SIZE
DEC. DIM. ±	DRILL, PUNCH, COMMERCIAL STOCK		
FRAC. DIM. ±	SIZES AND MANUFACTURERS		
ANGULAR DIM. ±	TOLERANCES ARE NOT INCLUDED.		

STANDARD DRAWING

IF IT IS FOUND DESIRABLE TO CHANGE ANY TOLERANCE OR OTHER DETAIL SPECIFIED ON THIS DRAWING NOTIFY THE PURCHASER PROMPTLY.

MAXIMUM ALLOWABLE TOLERANCES HAVE BEEN DETERMINED AND DEVIATIONS WILL BE CAUSE FOR REJECTION. REMOVE ALL BURRS AND SHARP EDGES

USED ON

MODEL PROJECT NO. ASS'Y. NO. DATE

AMC 6-5 CE 64-6

MAY 16 1960

CL-10005 A

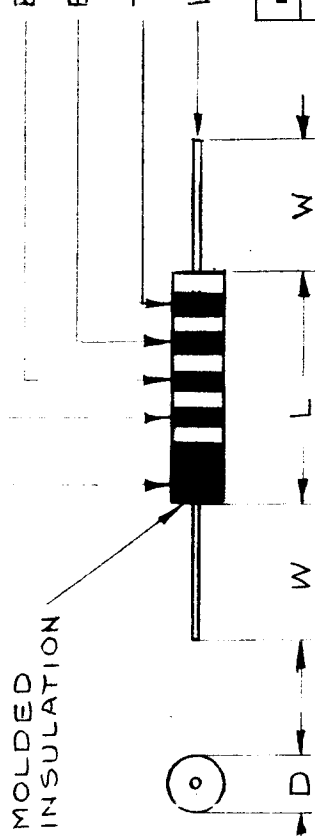
TMC PART NO.	MANUF. P/N	BAND NO.1 COLOR	BAND NO.2 COLOR	BAND NO.3 COLOR	L μ h	TOL	Q MIN	TEST FREQ MC	SRF MC	DC Ω MAX	D	L	W
CL-10005-1	2950-23	BLUE	GOLD	GREY	6.8	$\pm 10\%$	60	7.9	75	1.05	$\pm 1/32$	$\pm 1/16$	$\pm 3/16$
CL-10005-2	2950-33	YELLOW	VIOLET	BLACK	47.0	$\pm 10\%$	65	2.5	16	1.00	9/32	15/16	17/16

(MIL. IDENTIFIER)
SILVER BAND

- BAND NO. 1
- BAND NO. 2
- BAND NO. 3

INDUCT. COLOR	TOLERANCE TOL
GOLD	5%
SILVER	10%
NONE	20%

MFG IN ACCORDANCE WITH MIL-C-15305 AND AMEND. + MS 91189 MIL TYPE LT4K



TMC (Canada) LIMITED
OTTAWA ONTARIO

COIL, RF, FIXED

MOLDED

1 AK

R.W. Thomas
ELEC. DES. APP. MECH. DES. APP.

CHECKED
FINAL APPROVAL

CL-10005 B

REQ. ITEM	PART NO.	DESCRIPTION	SYMBOL
STOCK SIZE			
MATERIAL	WEIGHT PER PC.		
TYPE & TEMPER			
HEAT TREAT. SPEC.			
FINISH & SPEC. NO.			

B	REVISED COMPL.	7.7.64	11708	SB	JK
A	REDRAWN	5/16/60		MK	
ISSUE ITEM	CHANGED FROM	DATE	CN. NO.	DRAFTS CHECKER	ENG. APP.
TOLERANCES					
SCALE 510045-9					
DIMENSIONS IN INCHES					
UNLESS OTHERWISE SPECIFIED					
DRILL, PUNCH, COMMERCIAL STOCK					
SIZES AND MANUFACTURERS					
TOLERANCES ARE NOT INCLUDED.					
ALL OTHERS	DEC. DIM. \pm				
	FRAC. DIM. \pm				
	ANGULAR DIM. \pm				

TANDARD DRAWING

IF IT IS FOUND DESIRABLE TO CHANGE ANY TOLERANCE OR OTHER DETAIL SPECIFIED ON THIS DRAWING NOTIFY THE PURCHASER PROMPTLY.

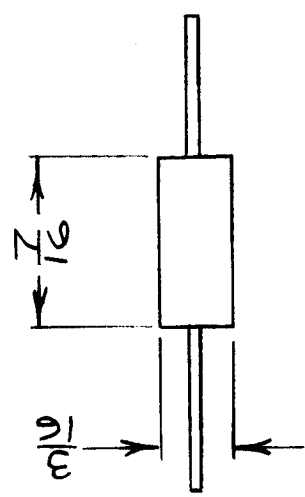
MAXIMUM ALLOWABLE TOLERANCES HAVE BEEN DETERMINED AND DEVIATIONS WILL BE CAUSE FOR REJECTION. REMOVE ALL BURRS AND SHARP EDGES

USED ON

MODEL	PROJECT NO.	ASS'Y. NO.	DATE
			DEC 13/60

CL10006 D

T.M.S. PT. NO.	MFR. PT. NO.	"L" UH	N8M.	TEST FREQ. MC	FR MIN. MC	MAX. MC	I-MAX. MA
CL-10006-1	73-2-331	3.3 ± 10%	36	7.9	65	.15	1480
CL-10006-2	73-2-272	27.0 ± 10%	60	25	20	2.8	300
CL-10006-3	73-2-101	1.0 ± 10%	76	25	190	.3	1050
CL-10006-4	73-2-471	4.7 ± 10%	45	7.9	55	.22	1225
CL-10006-5	73-2-821	8.2 ± 10%	36	7.9	38	.45	850
CL-10006-6	73-2-123	120 ± 5%	65	7.90	6.7	4.65	250
CL-10006-7	73-2-683	680 ± 5%	60	7.90	3.0	13.0	155



D	ON P/N - 64-7.790WAS 7.9	3/21/66	15982	HLA	R
C	REDRAWN	DEC 13/60		JPC	
ISSUE	CHANGED FROM	DATE	CN. NO.	DRAFTS	CHECKER/ENG. APP.
TOLERANCES					
SCALE 10045-3					
DIMENSIONS IN INCHES					
UNLESS OTHERWISE SPECIFIED					
DRILL, PUNCH, COMMERCIAL STOCK					
SIZES AND MANUFACTURERS					
TOLERANCES ARE NOT INCLUDED.					
ALL OTHERS	DEC. DIM. ± 1/64				
	ANGULAR DIM. ± —				

REQ. ITEM	PART NO.	DESCRIPTION	SYMBOL
		TMC (Canada) LIMITED OTTAWA ONTARIO	
		CHOKE - ENCAPSULATED	
		JPC	
		DRAWN	ELEC. DES. APP. <i>JPC</i>
		CHECKED	MECH. DES. APP.
		HEAT TREAT. SPEC.	FINL. APPROVAL
		FINISH & SPEC. NO.	CL10006 D

STANDARD DRAWING

CL10007

IF IT IS FOUND DESIRABLE TO CHANGE ANY TOLERANCE OR OTHER DETAIL SPECIFIED ON THIS DRAWING NOTIFY THE PURCHASER PROMPTLY.

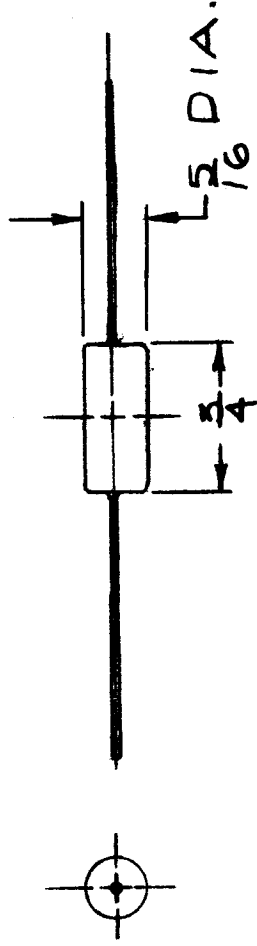
MAXIMUM ALLOWABLE TOLERANCES HAVE BEEN DETERMINED AND DEVIATIONS WILL BE CAUSE FOR REJECTION. REMOVE ALL BURRS AND SHARP EDGES

USED ON

MODEL PROJECT NO. ASSY. NO. DATE

TTU-2

AUG/4/59



L ± 10% UH	.Q	APPROX. OHMS	SRF	RATED DC GAP	MA
120.0	75	5.0	8	250	

NOTICE TO PERSONS RECEIVING THIS DRAWING

THE TECHNICAL MATERIEL CORPORATION claims proprietary right in the material disclosed herein. This drawing is issued in confidence for engineering information only and may not be reproduced or used to manufacture anything shown herein without permission from THE TECHNICAL MATERIEL CORPORATION to the user. This drawing is loaned for mutual assistance and is subject to recall at any time.

Property of:
THE TECHNICAL MATERIEL CORPORATION
 MAMARONECK, NEW YORK

REF: CTC - 2350 - 13

REQ. ITEM	PART NO.	DESCRIPTION	SYMBOL
		TMC (Canada) LIMITED OTTAWA ONTARIO	
STOCK SIZE		CHOKE ENCAPSULATED	
MATERIAL	WEIGHT PER PC.	120 UH ^A	
TYPE & TEMPER		JPC	
HEAT TREAT. SPEC.		DRAWN JWB	ELEC. DES. APP. MECH. DES. APP.
FINISH & SPEC. NO.		DCM	FINAL APPROVAL
			CL10007

ISSUE ITEM	CHANGED FROM	DATE	CN. NO.	DRAFTS	CHECKER	ENG. APP.
TOLERANCES						
SCALE 1:1						
ALL DEC. DIM. ±	DRILL, PUNCH, COMMERCIAL STOCK					
OTHERS FRAC. DIM. ±	SIZES AND MANUFACTURERS					
ANGULAR DIM. ±	TOLERANCES ARE NOT INCLUDED.					

IF IT IS FOUND DESIRABLE TO CHANGE ANY TOLERANCE OR OTHER DETAIL SPECIFIED ON THIS DRAWING NOTIFY THE PURCHASER PROMPTLY.

MAXIMUM ALLOWABLE TOLERANCES HAVE BEEN DETERMINED AND DEVIATIONS WILL BE CAUSE FOR REJECTION. REMOVE ALL BURRS AND SHARP EDGES

USED ON

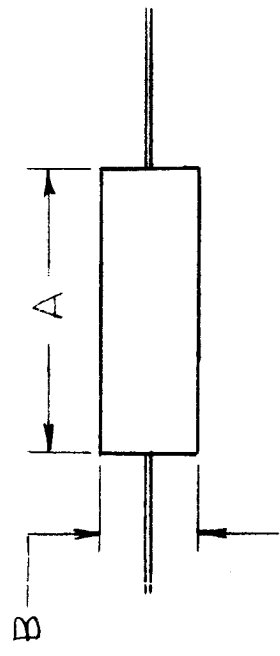
CL-10023 C

MODEL PROJECT NO. ASS'Y. NO. DATE

RFA-1 PAL-350 1978 60

TMC PART NO.	MFR PART NO	L UH	Q MIN	TEST FREQ. MC	FO MIN ME.	MAX RDC	I MAX MA	A MAX	B MAX	TMC MFG*
CL10023-1	RFC-L-4.7	4.7 ± 10%	75	7.9			3100	.9	.31	A1619-1
CL10023-2	RFC-M-8.2	8.2 ± 10%	65	7.9			1150	.6	.25	A1619-2

*NOTE: WHEN REQ'D THESE CHOKES CAN BE MADE IN PLANT FROM THE ABOVE DRAWINGS



REF. S10045-52

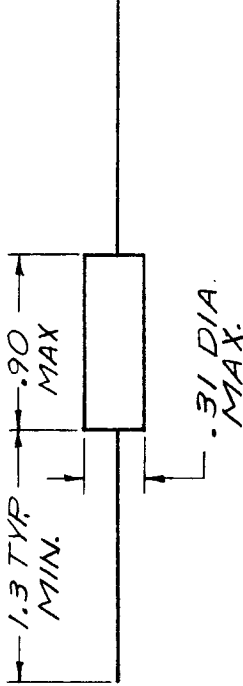
REQ. ITEM	DESCRIPTION	PART NO.	SYMBOL
	TMC(Canada)LIMITED OTTAWA		
	RF COIL FIXED		
	ENCAPSULATED		
	WH DAIVISON		
	DRAWN		
	CHECKED		
	ELEC. DES. APP.		
	MECH. DES. APP.		
	FINAL APPROVAL		
			CL-10023 C

REQ. ITEM	PART NO.	DESCRIPTION	SYMBOL
		STOCK SIZE	
		MATERIAL	
		WEIGHT PER PC.	
		TYPE & TEMPER	
		HEAT TREAT. SPEC.	
		FINISH & SPEC. NO.	

ISSUE ITEM	CHANGED FROM	DATE	CN. NO.	DRAFTS CHECKER	ENG. APP.
C	COMPLETE REV.	8/23/77	18446	H.G.	
B	1/4 WAS 3/16, 3/4 WAS 7/16	3-7-63	B392		
A	REPEAN/N	20 DEC 1960		WHD	

TOLERANCES		SCALE	A/T/S
DEC. DIM. ±			
FRAC. DIM. ±			
ANGULAR DIM. ±			
DIMENSIONS IN INCHES UNLESS OTHERWISE SPECIFIED			
DRILL, PUNCH, COMMERCIAL STOCK SIZES AND MANUFACTURERS TOLERANCES ARE NOT INCLUDED.			

ISSUE	ITEM	CHANGED FROM	DATE	CN. NO.	DRAFTS	CHECKER	ENG. APP.	REQ.	ITEM	PART NO.	DESCRIPTION					SYMBOL		
Ø		REL. TO PROD.	NOV 9/65		GM					L	Q	APPROX Fo	APPROX Cd	MIN RP	MIN RP	MAX RES	MAX I	
									uh			MCG MCS	uhf	Ka MC	Ka MC	Ω	ma	
									8.2			57	0.9	26	8	50	.11	2400



OPERATING TEMPERATURE RANGE: -55°C TO +125°C

MFR: S10045-52

PART NO: RFC-L-8.2

AMC 20	020/66	A10376	9 NOV 65	TMC (Canada) LIMITED OTTAWA ONTARIO	
MODEL	PROJECT NO.	ASS'Y. NO.	DATE	CHOKE, R.F., ENCAPSULATED	
MAXIMUM ALLOWABLE TOLERANCES HAVE BEEN DETERMINED AND DEVIATIONS WILL BE CAUSE FOR REJECTION. REMOVE ALL BURRS AND SHARP EDGES			IF IT IS FOUND DESIRABLE TO CHANGE ANY TOLERANCE OR OTHER DETAIL SPECIFIED ON THIS DRAWING NOTIFY THE PURCHASER PROMPTLY.		
TOLERANCES			SCALE		
DIC. DIM. ±	DIMENSIONS IN INCHES UNLESS OTHERWISE SPECIFIED		WEIGHT PER PC.		
FFAC. DIM. ±	DRILL, PUNCH, COMMERCIAL STOCK SIZES AND MANUFACTURERS TOLERANCES ARE NOT INCLUDED.		MATERIAL		
ANGULAR DIM. ±			TYPE & TEMPER		
ALL OTHERS			HEAT TREAT. SPEC.		
			FINISH & SPEC. NO.		
			STOCK SIZE		
			DRAWN		
			CHECKED		
			ELEC. DES. APP.		
			MECH. DES. APP.		
			FINAL APPROVAL		
			RD		
			BEDFORD		
			CL 10028		
			Ø		

CL 10030

ISSUE	ITEM	CHANGED FROM	DATE	CN. NO.	DRAFTS	CHECKER	ENG. APP.	REQ.	ITEM	PART NO.	DESCRIPTION	SYMBOL
∅		REL. TO PROD.	3-5-66		RD							

QUAN.	TMC NO.	SYMBOL	CORE	WIRE	NO. OF TURNS	IND. μ H	TOL. μ H	Q	2.5MHZ	COL. CODE
2	CL10030-1	L1-L4	CI-127-5	WI122-23	12	14.0	± 0.5		120	RED
2	CL10030-2	L2-L3	CI-127-5	WI122-23	14	19.5	± 0.5		100	YEL.

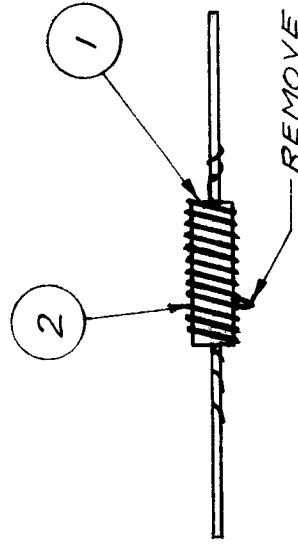
START
COLOR CODE
FINISH

FX10016	035/66	PROJECT NO.	ASSY. NO.	DATE	MAY 3/66
USED ON					
MAXIMUM ALLOWABLE TOLERANCES HAVE BEEN DETERMINED AND DEVIATIONS WILL BE CAUSE FOR REJECTION REMOVE ALL BURRS AND SHARP EDGES			IF IT IS FOUND DESIRABLE TO CHANGE ANY TOLERANCE OR OTHER DETAIL SPECIFIED ON THIS DRAWING NOTIFY THE PURCHASER PROMPTLY.		
TOLERANCES					
SCALE					
DIMENSIONS IN INCHES UNLESS OTHERWISE SPECIFIED					
DRILL, PUNCH, COMMERCIAL STOCK SIZES AND MANUFACTURERS TOLERANCES ARE NOT INCLUDED.					
DEC. DIM. \pm					
FRAC. DIM. \pm					
ANGULAR DIM. \pm					
ALL OTHERS					

TMC (Canada) LIMITED		ONTARIO	
OTTAWA		COIL, RF, TOROID	
MATERIAL		WEIGHT PER PC.	
TYPE & TEMPER		HEAT TREAT. SPEC.	
FINISH & SPEC. NO.		FINISH & SPEC. NO.	
DRAWN		ELEC. DES. APP.	
CHECKED		MECH. DES. APP.	
JUTASI		FINAL APPROVAL	
CL10030		∅	

ISSUE	ITEM	CHANGED FROM	DATE	CN. NO.	DRAFTS	CHECKER	ENG. APP.	REQ.	ITEM	PART NO.	DESCRIPTION	SYMBOL
Ø		REL TO PROD	3-8-66		RD		(Signature)	1	1	RC20GF105	RESISTOR, COMPOSITE	
A		REV PER CEMN	22-11-66	128	RD		(Signature)	2	2	WI-141-22-9	WIRE, ENAMEL COVERED	
B		REV PER CEMN	9-2-67	177	RD		(Signature)					

RESISTOR TOL. (JOR K) NOT CRITICAL

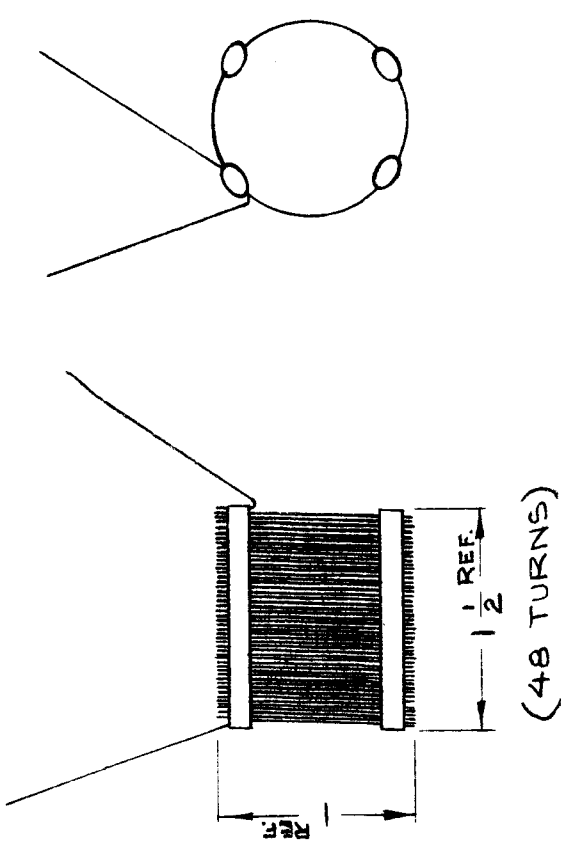


- WRAP 12 1/2 TURNS OF ITEM "2" ON ITEM "1" AND TAP AT 4 TURNS

MODEL		PROJECT NO.		DATE		STOCK SIZE	
AMC 20-16		020-16,8,4		3 AUG 66			
TOLERANCES				USED ON			
MAXIMUM ALLOWABLE TOLERANCES HAVE BEEN DETERMINED AND DEVIATIONS WILL BE CAUSE FOR REJECTION. REMOVE ALL BURRS AND SHARP EDGES				IF IT IS FOUND DESIRABLE TO CHANGE ANY TOLERANCE OR OTHER DETAIL SPECIFIED ON THIS DRAWING NOTIFY THE PURCHASER PROMPTLY.			
DEC. DIM. ±				SCALE N.T.S.			
FRAC. DIM. ±				DIMENSIONS IN INCHES			
ANGULAR DIM. ±				UNLESS OTHERWISE SPECIFIED			
				DRILL, PUNCH, COMMERCIAL STOCK SIZES AND MANUFACTURERS TOLERANCES ARE NOT INCLUDED.			
TMC (Canada) LIMITED		OTTAWA		ELEC. DES. APP.		MECH. DES. APP.	
CHOKE		DISTRIBUTION LINE		RD		DRAWN	
				CHECKED		COOK	
				FINISH & SPEC. NO.		CL10031	
				ANAL APPROVAL		B	

CL10032

ISSUE	ITEM	CHANGED FROM	DATE	CN. NO.	DRAFTS	CHECKER	ENG. APP.	REQ.	ITEM	PART NO.	DESCRIPTION	SYMBOL
Ø		REL. TO PROD. 28-7-66			RD							



REF. MFGR. S401-320
MFGR. PART NO. 832T

AX10031	050/66	SEPT 28/66	
MODEL	PROJECT NO.	ASSY. NO.	DATE
USED ON			
<p>MAXIMUM ALLOWABLE TOLERANCES HAVE BEEN DETERMINED AND DEVIATIONS WILL BE CAUSE FOR REJECTION. REMOVE ALL BURRS AND SHARP EDGES</p>		<p>IF IT IS FOUND DESIRABLE TO CHANGE ANY TOLERANCE OR OTHER DETAIL SPECIFIED ON THIS DRAWING NOTIFY THE PURCHASER PROMPTLY.</p>	
TOLERANCES			
DEC. DIM. ±	SCALE NTS.		
FRAC. DIM. ±	DIMENSIONS IN INCHES UNLESS OTHERWISE SPECIFIED		
ANGULAR DIM. ±	DRILL, PUNCH, COMMERCIAL STOCK SIZES AND MANUFACTURERS TOLERANCES ARE NOT INCLUDED.		
TMC (Canada) LIMITED OTTAWA		COIL, RF	
DRAWN 		ELEC. DES. APP. MECH. DES. APP.	
CHECKED COOK		FINAL APPROVAL 	
FINISH & SPEC. NO.		CL10032	

CL10033

ISSUE	ITEM	CHANGED FROM	DATE	CN. NO.	DRAFTS	CHECKER	ENG. APP.	REQ.	ITEM	PART NO.	DESCRIPTION	SYMBOL
Ø		REL TO PROD	4-26-67		RD		[Signature]					
A		REV. AS PER CEMN NO. 20/67	20/67	219	RPL		[Signature]					

-ELECTRICALLY SAME AS HAMMOND 153L.
 -PC TYPE
 -LUG MOUNTED

INDUCTANCE: .9 H
 CURRENT: 75 MA D.C.
 RESISTANCE: 125 Ω
 MAX OP. VOLT: 300 VDC

MODEL	PROJECT NO.	ASSY. NO.	DATE
STE-5	060/67	A10576	14 FEB 67

USED ON

MAXIMUM ALLOWABLE TOLERANCES HAVE BEEN DETERMINED AND DEVIATIONS WILL BE CAUSE FOR REJECTION REMOVE ALL BURRS AND SHARP EDGES	IF IT IS FOUND DESIRABLE TO CHANGE ANY TOLERANCE OR OTHER DETAIL SPECIFIED ON THIS DRAWING NOTIFY THE PURCHASER PROMPTLY.
---	---

TOLERANCES	
DEC. DIM. ±	SCALE
FRAC. DIM. ±	DIMENSIONS IN INCHES UNLESS OTHERWISE SPECIFIED
ANGULAR DIM. ±	DRILL, PUNCH, COMMERCIAL STOCK SIZES AND MANUFACTURERS TOLERANCES ARE NOT INCLUDED.

STOCK SIZE	WEIGHT PER PC.
MATERIAL	TYPE & TEMPER
HEAT TREAT. SPEC.	FINISH & SPEC. NO.

TMC (Canada) LIMITED OTTAWA ONTARIO	
INDUCTOR, LAMINATED	
RD	CORE
DRAWN	ELEC. DES. APP.
[Signature]	[Signature]
CHECKED	MECH. DES. APP.
[Signature]	[Signature]
FINAL APPROVAL	
JUTASI	CL10033
A	

CL 10038

ISSUE	ITEM	CHANGED FROM	DATE	CN. NO.	DRAFTS	CHECKER	ENG. APP.	REQ.	ITEM	PART NO.	DESCRIPTION	SYMBOL
0		REL. TO PROD	DEC 19/67		RPL	<i>[Signature]</i>	<i>[Signature]</i>					

STANDARD DRAWING

SPECIFICATIONS

CHOKE R₁F — 2 PIES
 POWDERED IRON CORE
 10 MH
 75 MA
 47 Ω
 10% TOLERANCE

13/16 DIA. REF.

100

MGFR PART NO. - 1501
 MGFR NO. S401 - 158

MODEL	PROJECT NO.	ASS'Y. NO.	DATE	STOCK SIZE
			DEC 16/67	

MATERIAL	WEIGHT PER PC.	TYPE & TEMPER	HEAT TREAT. SPEC.	FINISH & SPEC. NO.

DRAWN	ELEC. DES. APP.	MECH. DES. APP.	FINAL APPROVAL
RPL			

TMC (Canada) LIMITED OTTAWA	CHOKE, R.F.
--------------------------------	-------------

MAXIMUM ALLOWABLE TOLERANCES HAVE BEEN DETERMINED AND DEVIATIONS WILL BE CAUSE FOR REJECTION. REMOVE ALL BURRS AND SHARP EDGES.	IF IT IS FOUND DESIRABLE TO CHANGE ANY TOLERANCE OR OTHER DETAIL SPECIFIED ON THIS DRAWING NOTIFY THE PURCHASER PROMPTLY.
---	---

TOLERANCES DEC. DIM. ± FRAC. DIM. ± ANGULAR DIM. ±	SCALE DIMENSIONS IN INCHES UNLESS OTHERWISE SPECIFIED DRILL, PUNCH, COMMERCIAL STOCK SIZES AND MANUFACTURERS TOLERANCES ARE NOT INCLUDED.
---	--

ALL OTHERS	CL 10038
------------	----------

ISSUE	ITEM	CHANGED FROM	DATE	CN. NO.	DRAFTS	CHECKER	ENS. APP.	REQ.	ITEM	PART NO.	DESCRIPTION	SYMBOL
Ø		REL TO PROD	MAR 29/68		AP	W. J.	W. J.	1	1	CI 114	CORE	
								AR	2	WI-1001-14	WIRE MAGNET	
								AR	3	BS 100	SOLDER SOFT	
								AR	4	GL 104-2	RESIN SYN. (NSUL-X)	

CL 10039-1

ASSEMBLY:

CLOSELY WIND 30 TURNS OF ITEM 2 IN THE MIDDLE OF ITEM 1; COAT WITH ITEM 4

TEST:

MEASURE INDUCTANCE ON "BOONTON" BRIDGE AT FREQUENCY 2.5 MHZ, PEAL TURNS OFF UNTIL INDUCTANCE MEASURES 12.2 µH WITHIN 1 TURN.

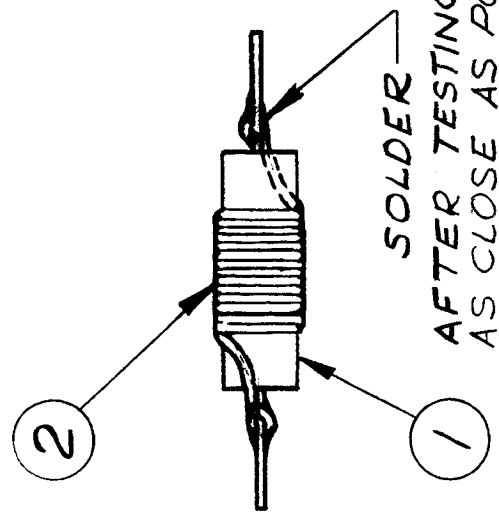
CL 10039-2

ASSEMBLY:

CLOSELY WIND 20 TURNS OF ITEM 2 IN THE MIDDLE OF ITEM 1; COAT WITH ITEM 4.

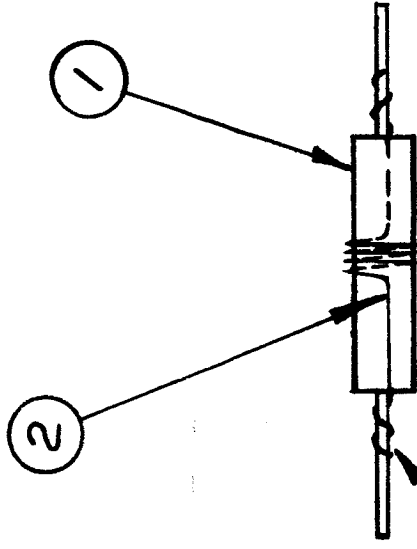
TEST:

MEASURE INDUCTANCE ON "BOONTON" BRIDGE AT FREQUENCY 7.9 MHZ, PEAL TURNS OFF UNTIL INDUCTANCE MEASURES 5.6 µH WITHIN 1 TURN.



AMC-21		070/68	FX 10020	FEB. 28/67
MODEL	PROJECT NO.	ASSY. NO.	DATE	
USED ON				
TOLERANCES		IF IT IS FOUND DESIRABLE TO CHANGE ANY TOLERANCE OR OTHER DETAIL SPECIFIED ON THIS DRAWING NOTIFY THE PURCHASER PROMPTLY.		
DEC. DIM. ±		SCALE		
FRAC. DIM. ±		DIMENSIONS IN INCHES UNLESS OTHERWISE SPECIFIED		
ANGULAR DIM. ±		DRILL, PUNCH, COMMERCIAL STOCK SIZES AND MANUFACTURERS TOLERANCES ARE NOT INCLUDED.		
ALL OTHERS				
TMC (Canada) LIMITED OTTAWA		COIL RF		
AP	DRAWN	ELEC. DES. APP.	MECH. DES. APP.	
CHECKED		FINAL APPROVAL		
CL 10039		Ø		

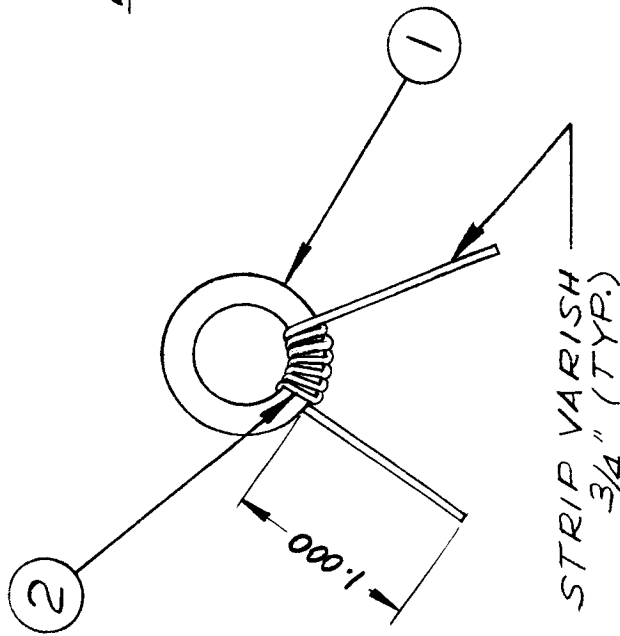
ISSUE	ITEM	CHANGED FROM	DATE	CN. NO.	DRAFTS	CHECKER	ENG. APP.	REQ.	ITEM	PART NO.	DESCRIPTION	SYMBOL
Ø		REL TO PROD	MAR 29/68		AP	W.	W	1	1	CI 114	CORE	
A		REV. AS PER CEMN	JUN 5 1968	370	RPL	W	W	AR 2	2	W129-28	WIRE MAGNET	
								AR 3	3	BS 100	SOLDER SOFT	
								AR 4	4	GL 104-2	RESIN SYN. (INSUL-X)	



CL10041-1
 WIND 3 1/2 TURNS OF ITEM 2 ON THE MIDDLE OF ITEM 1. COAT WITH ITEM 4
 INDUCTANCE - 0.32 µH ± 20 %

MODEL	PROJECT NO.	ASSY. NO.	DATE
AX 10047	070/68	A 10687	MARCH 4/68
USED ON			
MAXIMUM ALLOWABLE TOLERANCES HAVE BEEN DETERMINED AND DEVIATIONS WILL BE CAUSE FOR REJECTION. REMOVE ALL BURRS AND SHARP EDGES		IF IT IS FOUND DESIRABLE TO CHANGE ANY TOLERANCE OR OTHER DETAIL SPECIFIED ON THIS DRAWING NOTIFY THE PURCHASER PROMPTLY.	
TOLERANCES		SCALE	
DEC. DIM. ±	DIMENSIONS IN INCHES UNLESS OTHERWISE SPECIFIED DRILL, PUNCH, COMMERCIAL STOCK SIZES AND MANUFACTURERS TOLERANCES ARE NOT INCLUDED.	STOCK SIZE	
FRAC. DIM. ±		MATERIAL	
ANGULAR DIM. ±		WEIGHT PER PC.	
ALL OTHERS		TYPE & TEMPER	
		HEAT TREAT. SPEC.	
		FINISH & SPEC. NO.	
		DRAWN	
		ELEC. DES. APP.	
		MECH. DES. APP.	
		CHECKED	
		FINAL APPROVAL	
		TMC (Canada) LIMITED OTTAWA ONTARIO	
		COIL RF	
		AP	
		CL10041 A	

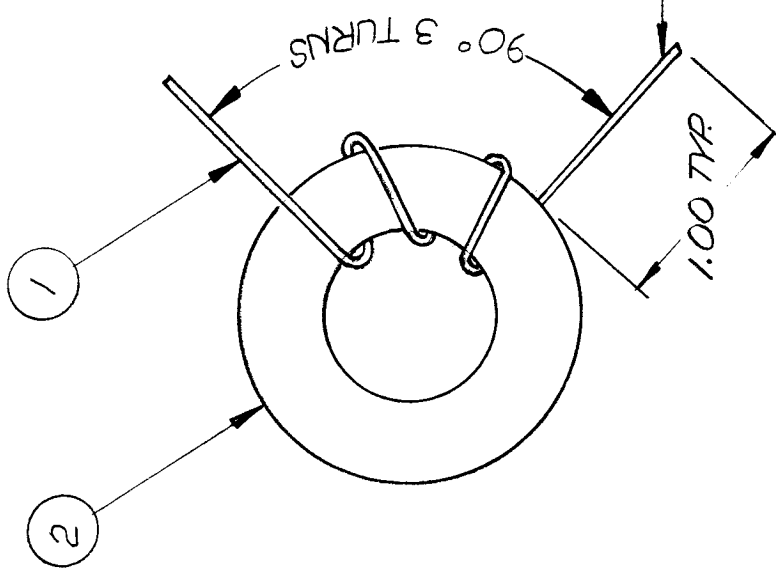
ISSUE	ITEM	CHANGED FROM	DATE	CH. NO.	DRAFTS	CHECKER	EMB. APP.	REQ.	ITEM	PART NO.	DESCRIPTION	SYMBOL
B		REV. AND REDRAWN AS PER CEMN	FEB 18/69	443	AP	[Signature]	[Signature]	1	1	CI 10011-3-03	CORE, TORROID	
								AR	2	WI 122-23	WIRE, MAGNET	



ELECTRICAL SPECIFICATION :-
 NO. OF TURNS - 6
 WIND ALL SIX TURNS AS CLOSELY AS POSSIBLE

AMC B	074/69	PROJECT NO.	DATE	FEB 18/69
MODEL		ABBY. NO.	USED ON	
TOLERANCES		IF IT IS FOUND DESIRABLE TO CHANGE ANY TOLERANCE OR OTHER DETAIL SPECIFIED ON THIS DRAWING NOTIFY THE PURCHASER PROMPTLY.		
DEC. DIM. ± 0.030		SCALE	NTS	
FRAC. DIM. ± 1/16		DIMENSIONS IN INCHES UNLESS OTHERWISE SPECIFIED		
ANGULAR DIM. ± 0° 30'		DRILL, PUNCH, COMMERCIAL STOCK SIZES AND MANUFACTURERS TOLERANCES ARE NOT INCLUDED.		
ALL OTHERS				
TMC (Canada) LIMITED OTTAWA		COIL, RF		
AP		DRAWN		
SIMPSON		ELEC. DES. AP. MECH. DES. AP.		
CHECKED		FINAL APPROVAL		
		CL 10044 B		

ISSUE	ITEM	CHANGED FROM	DATE	CM. NO.	DRAFTS	CHECKER	ENG. APP.	REQ.	ITEM	PART NO.	DESCRIPTION	SYMBOL
X		ENG RELEASE	27 APR 78		NAT.	SB	<i>[Signature]</i>	X	1	WT 123-22	WIRE, MAGNET.	
								1	2	CT10012-T44-10	CORE TOROIDIAL	
								X	3	GL104-2	INSULATING VARNISH	



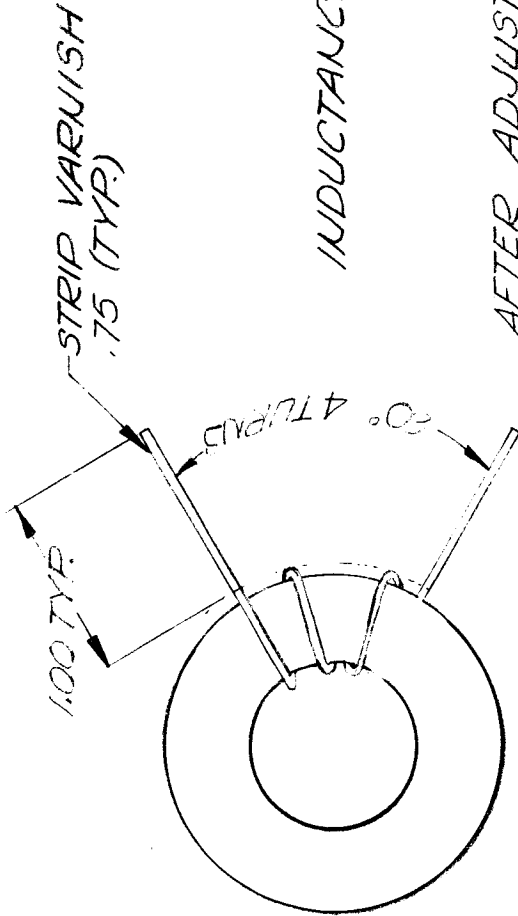
AFTER ADJUSTING, DIP IN INSULATING VARNISH, (ITEM 3), AND BAKE FOR ONE HOUR AT 125°C, AND COOL AT -20°C FOR ONE HOUR
 NOTE:

INDUCTANCE .09 μH ±10%

STRIP VARNISH
 .75 (TYR)

MODEL		PROJECT NO.		A11029-5		DATE		27 APR 78		TMC (Canada) LIMITED OTTAWA ONTARIO	
MAXIMUM ALLOWABLE TOLERANCES HAVE BEEN DETERMINED AND DEVIATIONS WILL BE CAUSE FOR REJECTION REMOVE ALL BURRS AND SHARP EDGES		IF IT IS FOUND DESIRABLE TO CHANGE ANY TOLERANCE OR OTHER DETAIL SPECIFIED ON THIS DRAWING NOTIFY THE PURCHASER PROMPTLY.		SCALE 4:1		DIMENSIONS IN INCHES UNLESS OTHERWISE SPECIFIED		DRILL: PUNCH, COMMERCIAL STOCK SIZES AND MANUFACTURERS TOLERANCES ARE NOT INCLUDED.		DRAWN L. BROWN	
TOLERANCES		DEC. DIM. ± .X = .05		FRAC. DIM. ± 1/64 .XX = .01		ANGULAR DIM. ± 0° 30' .XXX = .005		ELEC. DES. APP.		MECH. DES. APP.	
USED ON		STOCK SIZE		MATERIAL		TYPE & TEMPER		HEAT TREAT. SPEC.		FINISH & SPEC. NO.	
										THOMAS	
										CHECKED	
										CL10061	
										FINAL APPROVAL	
										✓	

ISSUE	ITEM	CHANGED FROM	DATE	CN. NO.	DRAFTS	CHECKER	ENG. APP.	REQ.	ITEM	PART NO.	DESCRIPTION	SYMBOL
X		ENG RELEASE	27 APR 72		NAT	4B	<i>[Signature]</i>	X	1	WI123-22	WIRE, MAGNET	
X1		60° 4 TURNS WAS 90° 8 TURNS.	22 Jun 72		NAT	4B	<i>[Signature]</i>	1	2	CI10012-744-10	CORE, TOROIDIAL	
								X	3	GL104-2	INSULATING VARNISH	



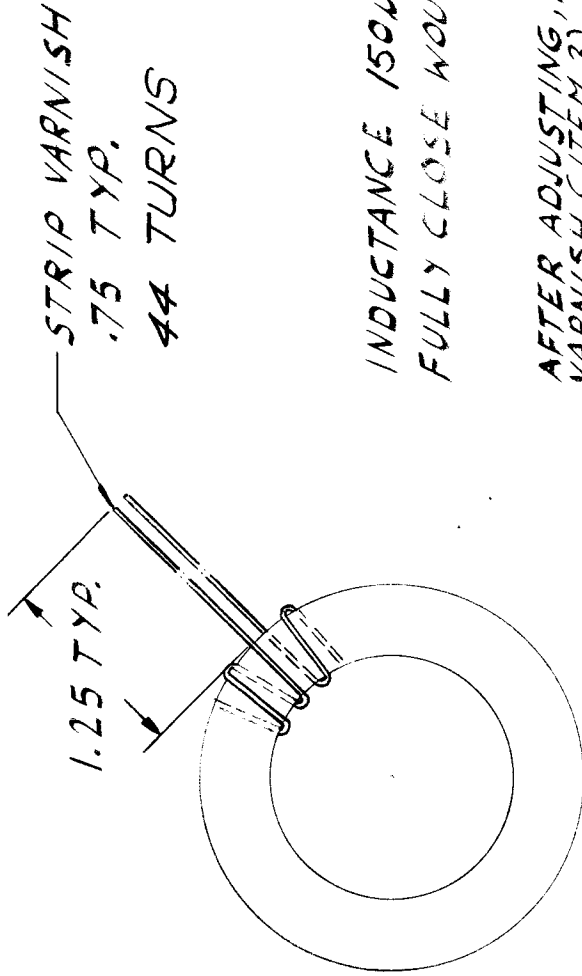
INDUCTANCE .16 μ H \pm 10%

AFTER ADJUSTING, DIP IN INSULATING VARNISH, (ITEM 3), AND BAKE FOR ONE HOUR AT 125°C AND COOL AT -20°C FOR ONE HOUR

NOTE:

MODEL	PROJECT NO.	DATE	DATE
REX 1	A11029-5	27 APR 72	
USED ON			
MAXIMUM ALLOWABLE TOLERANCES HAVE BEEN DETERMINED AND DEVIATIONS WILL BE CAUSE FOR REJECTION REMOVE ALL BURRS AND SHARP EDGES		IF IT IS FOUND DESIRABLE TO CHANGE ANY TOLERANCE OR OTHER DETAIL SPECIFIED ON THIS DRAWING NOTIFY THE PURCHASER PROMPTLY.	
TOLERANCES DEC. DIM. \pm .05 FRAC. DIM. \pm $\frac{1}{64}$ ANGULAR DIM. \pm 0° 30' .XXX = .006		SCALE 4:1 DIMENSIONS IN INCHES UNLESS OTHERWISE SPECIFIED DRILL: PUNCH, COMMERCIAL STOCK SIZES AND MANUFACTURERS TOLERANCES ARE NOT INCLUDED.	
ALL OTHERS	TOLERANCES	SCALE 4:1	DIMENSIONS IN INCHES UNLESS OTHERWISE SPECIFIED DRILL: PUNCH, COMMERCIAL STOCK SIZES AND MANUFACTURERS TOLERANCES ARE NOT INCLUDED.
STOCK SIZE		DATE	
MATERIAL		DATE	
WEIGHT PER PC.		DATE	
TYPE & TEMPER.		DATE	
HEAT TREAT. SPEC.		DATE	
FINISH & SPEC. NO.		DATE	
TMC (Canada) LIMITED OTTAWA ONTARIO		COIL, RF	
THOMAS		DRAWN	
L. BROWN		CHECKED	
CL10062		FINAL APPROVAL	
X1		MECH. DES. APP.	

ISSUE	ITEM	CHANGED FROM	DATE	CN. NO.	DRAFTS	CHECKER	ENG. APP.	REQ.	ITEM	PART NO.	DESCRIPTION	SYMBOL
X		ENG. RELEASE	6 JUNE 72		VVR		WNT	X	1	WI/23-26	WIRE, MAGNET	
X		ITEM 2 CHANGED FROM CI 10015-CF108-Q2	12 OCT 72		C.C.	B.M.#		1	2	CI 10011-1-01	CORE, TOROID	
								X	3	GL104-2	INSULATING VARNISH	



INDUCTANCE 150μH ± 10%
FULLY CLOSE WOUND CORE

NOTE:
AFTER ADJUSTING, DIP IN INSULATING VARNISH, (ITEM 3) AND BAKE FOR ONE HOUR AT 125°C AND COOL AT -20°C FOR ONE HOUR

LPA-400		PROJECT NO.		A11045-5		DATE		6 JUNE 72		TMC (Canada) LIMITED OTTAWA ONTARIO	
MODEL		ASSY. NO.		DATE		STOCK SIZE		COIL, RF		DRAWN	
MAXIMUM ALLOWABLE TOLERANCES HAVE BEEN DETERMINED AND DEVIATIONS WILL BE CAUSE FOR REJECTION REMOVE ALL BURRS AND SHARP EDGES		IF IT IS FOUND DESIRABLE TO CHANGE ANY TOLERANCE OR OTHER DETAIL SPECIFIED ON THIS DRAWING NOTIFY THE PURCHASER PROMPTLY.		SCALE 4:1		MATERIAL		TYPE & TEMPER		MECH. DES. APP.	
TOLERANCES		DIMENSIONS IN INCHES UNLESS OTHERWISE SPECIFIED		HEAT TREAT. SPEC.		FINISH & SPEC. NO.		L. BROWN		FINAL APPROVAL	
DEC. DIM. 1.015		FRAC. DIM. ± 0.005		ANGULAR DIM. ± 0° 30'		FINISH & SPEC. NO.		CL 10063		X	