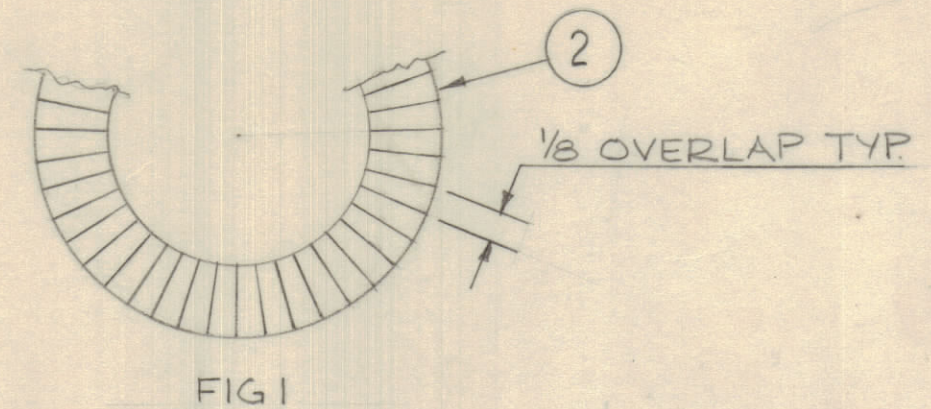


IF IT IS FOUND DESIRABLE TO CHANGE ANY TOLERANCE OR OTHER DETAIL SPECIFIED ON THIS DRAWING NOTIFY THE PURCHASER PROMPTLY.		DIMENSIONS IN INCHES UNLESS OTHERWISE SPECIFIED					
MAXIMUM ALLOWABLE TOLERANCES HAVE BEEN DETERMINED AND DEVIATIONS WILL BE CAUSE FOR REJECTION. REMOVE ALL BURRS AND SHARP EDGES.							
ISSUE	ITEM	CHANGED FROM	DATE	CH. NO.	DRAFTS	CHECKER	ENG. APP.
Ø		REL TO PROD	3 SEP 70				NH
X		SECTION ADDED					
X2		WIRE WAS WI-122-12					
X3		START & FINISH RELEASE TEST DATA ADDED					

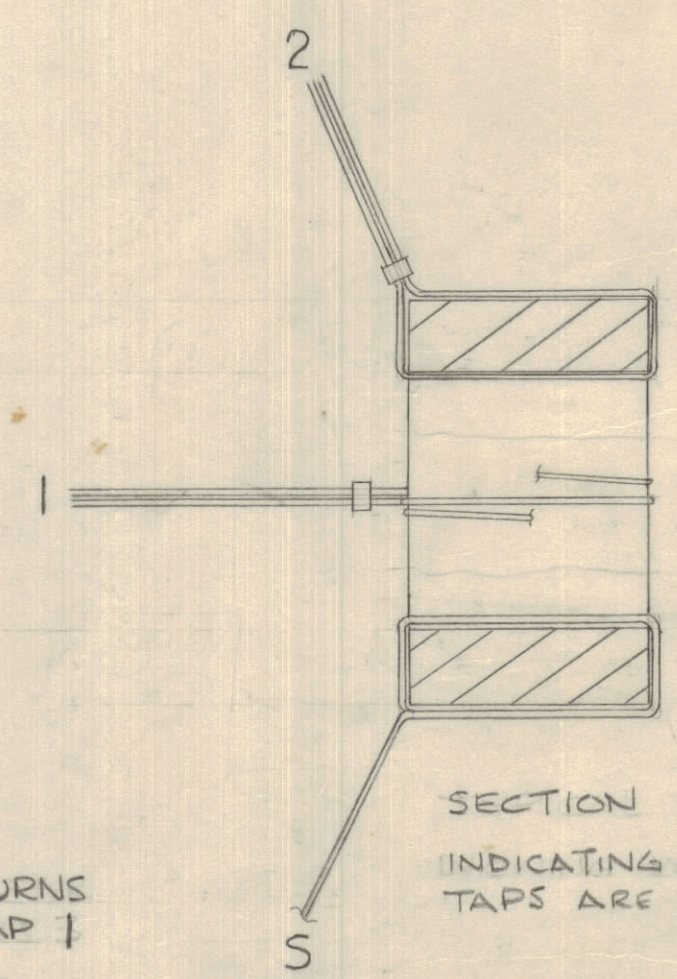
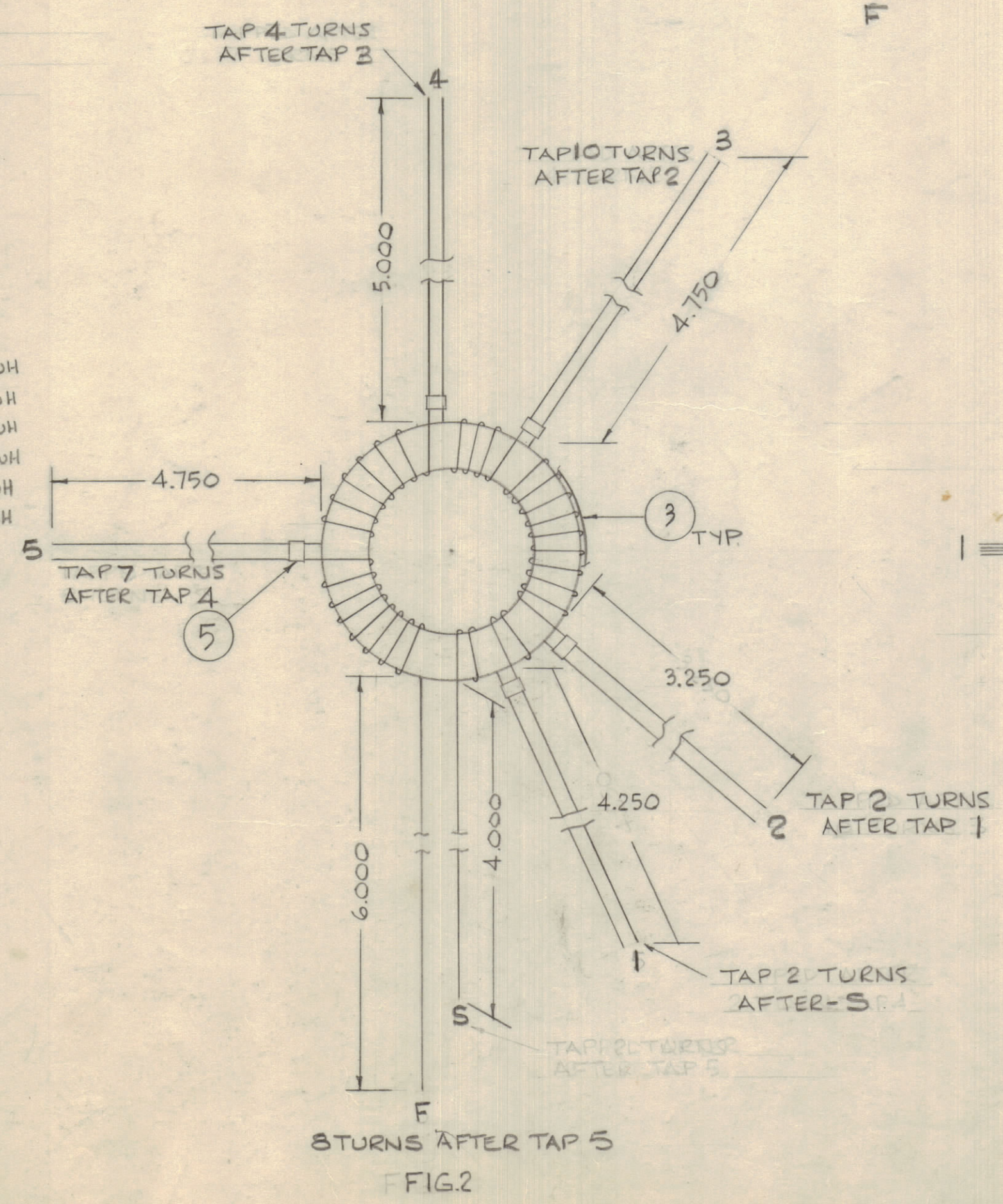
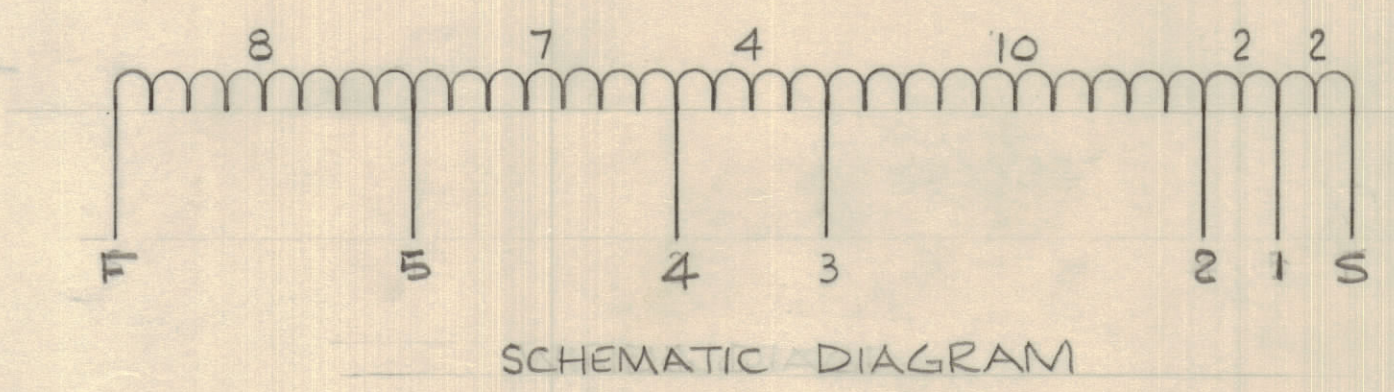
REQ.	ITEM	PART NO.	DESCRIPTION	SYMBOL
2	1	CI10013	CORE, TOROID	
A/R	2	TA-113-1-.250	TAPE, ELECT,	
A/R	3	TA-113-1-1.000	" "	
A/R	4	WI-140-E22E9	WIRE, ELECT., INSUL.	
5	5	CU-142-8	STRAP, CABLE.	



- NOTES:-
1. BIND TWO TOROID CORES (ITEM#1) TOGETHER USING ELECTRICAL TAPE (ITEM#2), OVERLAPPING AS SHOWN IN FIG#1
 2. WIND COIL AS SHOWN IN FIG#2. INSULATION OF EACH WIRE END TO BE STRIPPED 1/2" AND TINNED 1/4"
 3. WRAP ELECTRICAL TAPE (ITEM#3) TWICE AROUND OUTSIDE OF COIL AS SHOWN IN FIG#2.

4. TEST DATA

SHORT TAP 1 TO S,	STO F	INDUCTANCE	30 µH ± 0.5 µH
SHORT TAP 2 TO S,	STO F	"	24 µH ± 0.5 µH
SHORT TAP 3 TO S,	STO F	"	21 µH ± 0.5 µH
SHORT TAP 4 TO S,	STO F	"	10.5 µH ± 0.2 µH
SHORT TAP 5 TO S,	STO F	"	9 µH ± 0.1 µH
SHORT TAP 5 TO S,	STO F	"	3.25 µH ± 0.1 µH



CL10046 Ø

TOLERANCES		SCALE: N.T.S.
ALL OTHERS	DEC. DIM. ± 1/64 FRAC. DIM. ± 1/64 ANGULAR DIM. ± 0° 30'	.XX*.01 .XXX*.008
DRILL, PUNCH, COMMERCIAL STOCK SIZES AND MANUFACTURERS TOLERANCES ARE NOT INCLUDED.		

MTR-1	PROJECT NO.	CL10046	DATE	16 MAR 1970
MODEL	ASS'Y. NO.			

STOCK SIZE		TMC (Canada) LIMITED OTTAWA ONTARIO	
MATERIAL		COIL	
TYPE & TEMPER	DRAWN	ELEC. DES. APP.	MECH. DES. APP.
HEAT TREAT. SPEC.	CHECKED	FINAL APPROVAL	
FINISH & SPEC. NO.		CL10046 Ø	