

REQ. PER UNIT	USED ON	CK 904
	MODEL	RTDA-1
	ASS'Y. NO.	
	DATE	

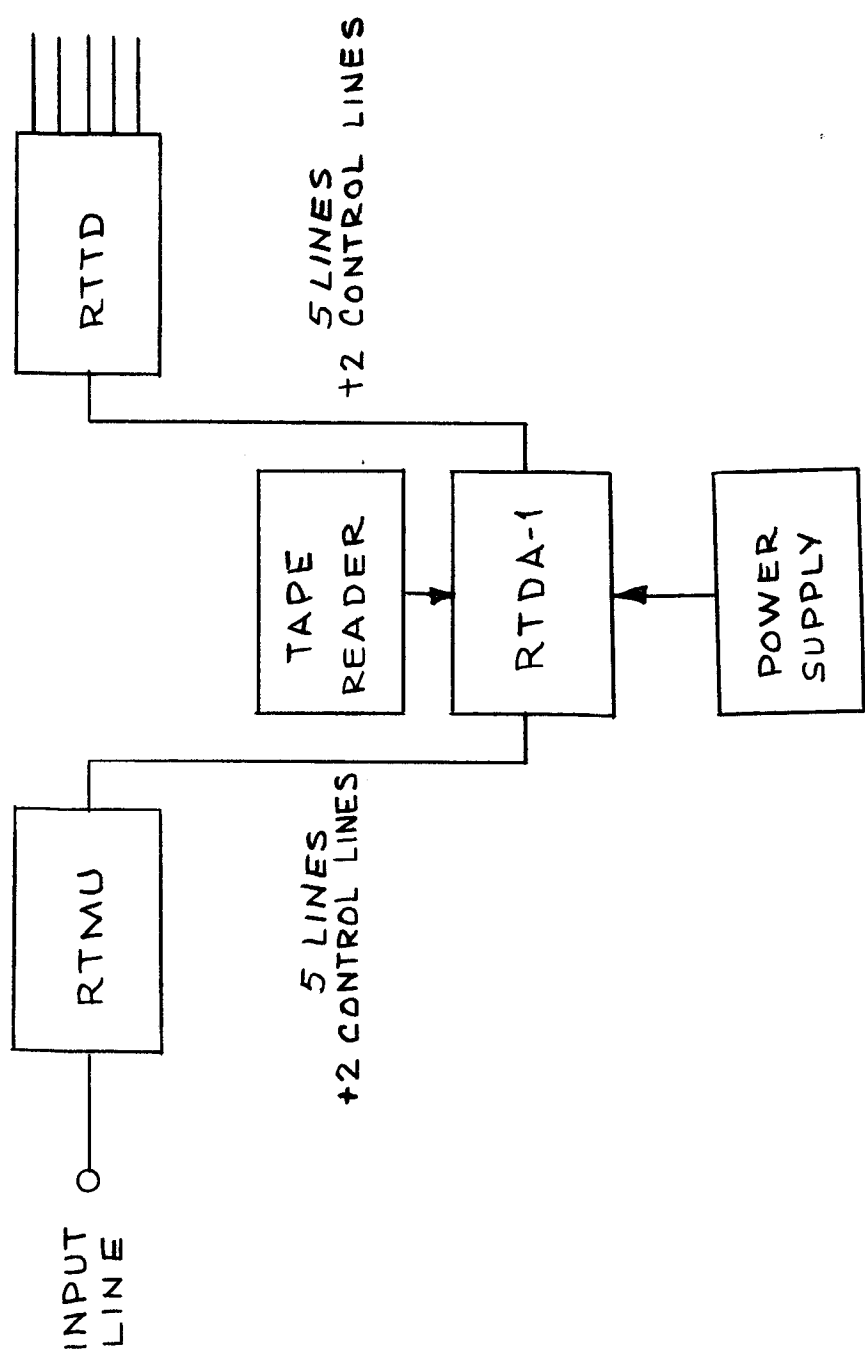


FIGURE 5

REQ. ITEM	PART NO.	DESCRIPTION	SYMBOL
		THE TECHNICAL MATERIEL CORP. MAMARONECK. NEW YORK	
		DIAGRAM, BLOCK	
		RTDA-1	
		M. TANTILLO 11-25-64	
		CHECKED	
		DRAWN	
		HEAT TREAT. SPEC.	
		FINISH & SPEC. NO.	
		ELEC. DES. APP.	
		MECH. DES. APP.	
		CK 904	

11/1/65

DATE

CH. NO.

DRAFTS

CHECKER

ENG. APP.

SCALE

CODE

ORIGINAL RELEASE

UNLESS OTHERWISE SPECIFIED
DIMENSIONS ARE IN INCHES AND INCLUDE
CHEMICALLY APPLIED OR PLATED FINISHES

FRACTIONS
± 1/64
ANGLES
± 0° 30'

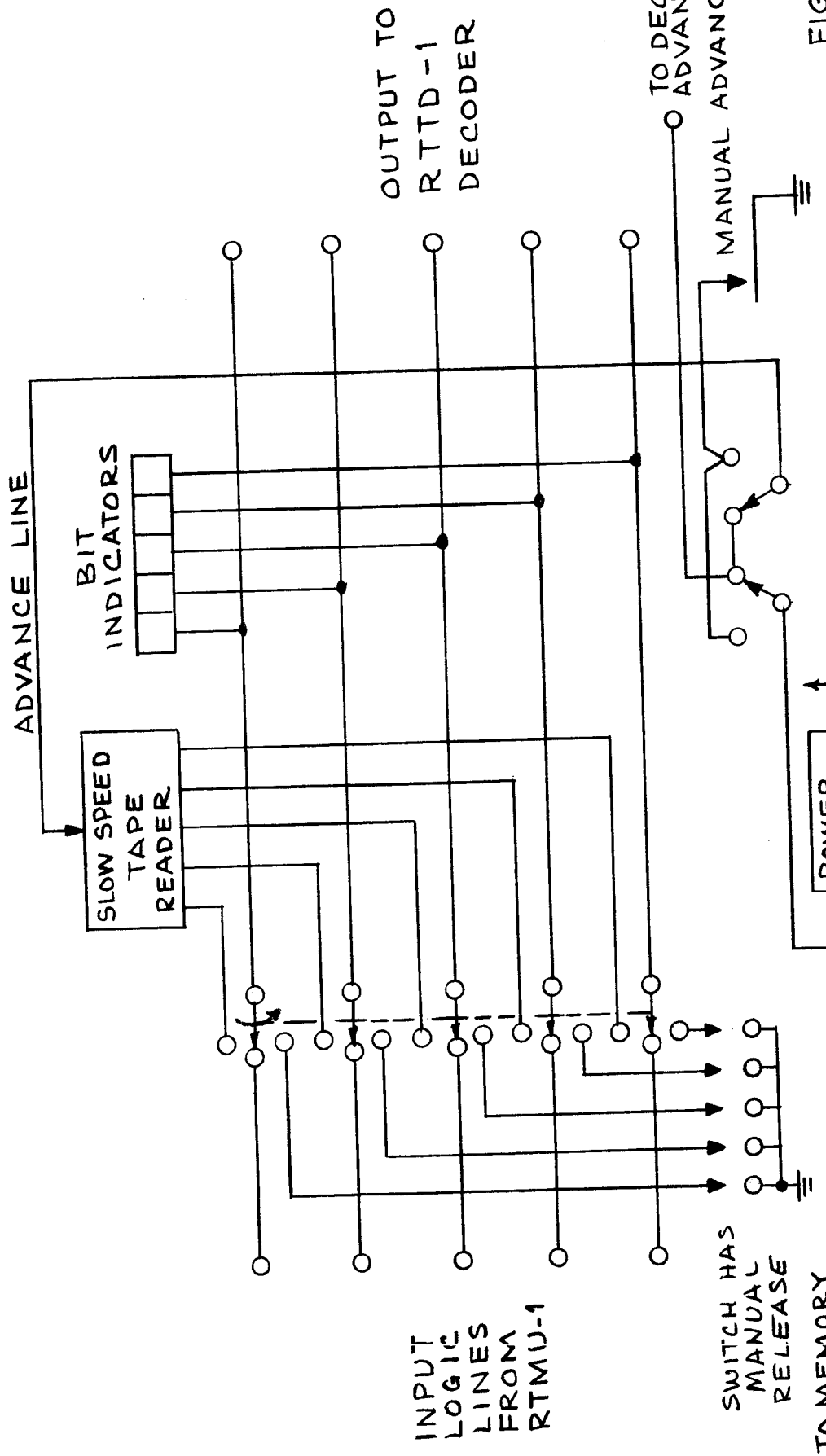
TOLERANCES

DECIMALS
.X ± .05
.XX ± .01
.XXX ± .005

CK905

USED ON
REQ. PER UNIT
MODEL
RTDA-1

ASSY. NO.
DATE



REQ. ITEM	PART NO.	DESCRIPTION	SYMBOL
		THE TECHNICAL MATERIEL CORP. MAMARONECK, NEW YORK	
		SCHEMATIC DIAGRAM	
		RTDA-1	
		MATERIAL	
		STOCK SIZE	
		HEAT TREAT. SPEC.	
		CHECKED	
		DRAWN	
		TYPE & TEMPER	
		MECH. DES. APP.	
		ELEC. DES. APP.	
		FINISH & SPEC. NO.	
		CK905	

CK908

REQ. PER UNIT	MODEL	USED ON
	RASA-1	ASSY. NO.
		DATE

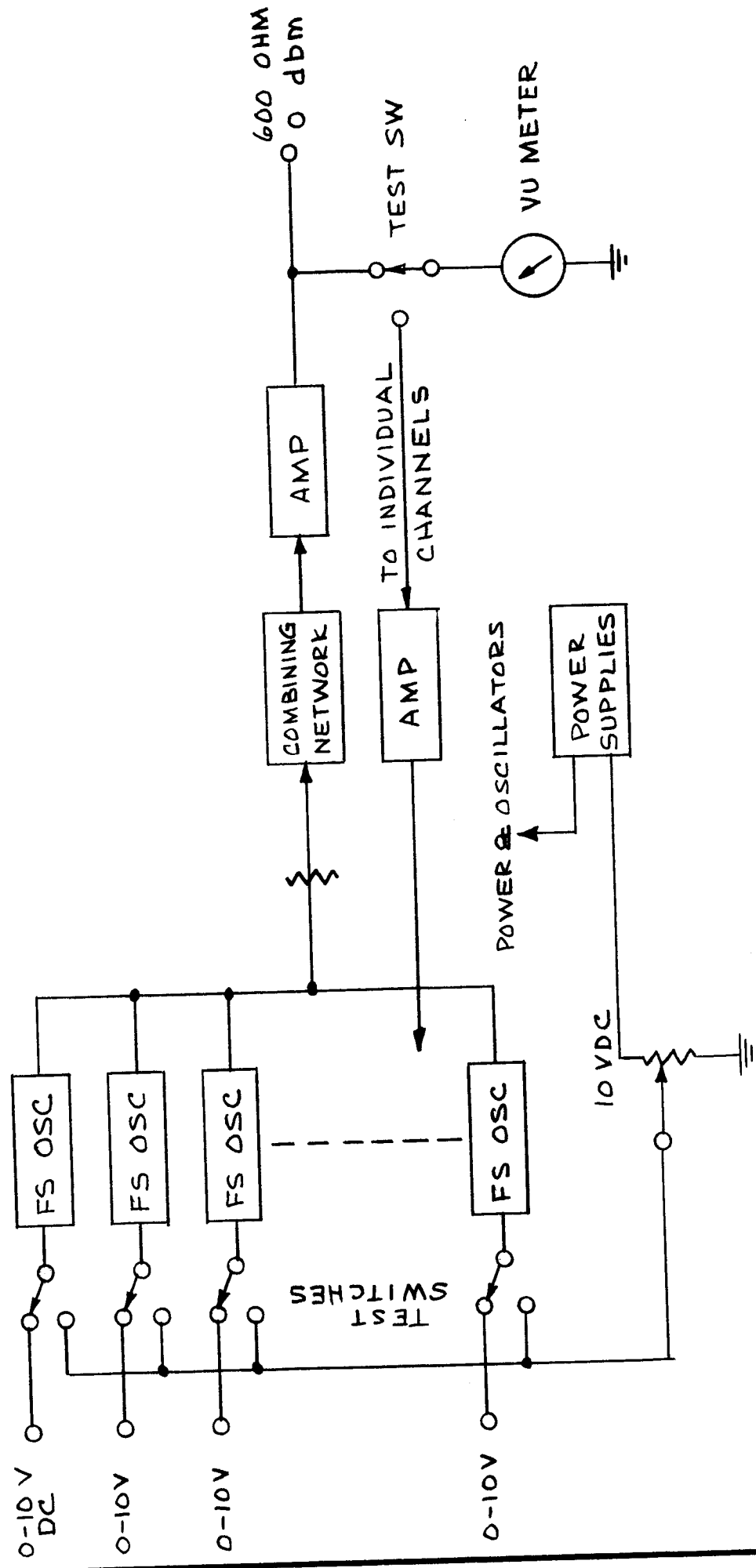


FIGURE 3

REQ. ITEM	PART NO.	DESCRIPTION	SYMBOL
		THE TECHNICAL MATERIEL CORP. MAMARONECK, NEW YORK	
		DIAGRAM, BLOCK	
		RASA-1	
		M TANTILLO 11-25-64 DRAWN	FINAL APPROVAL
			CHECKED
		TYPE & TEMPER	HEAT TREAT. SPEC.
		FINISH & SPEC. NO.	ELEC. DES. APP. MECH. DES. APP.
			CK908

REQ. PER UNIT		USED ON	
RARA-1		MODEL	ASSY. NO.
RARA-1		CK909	DATE

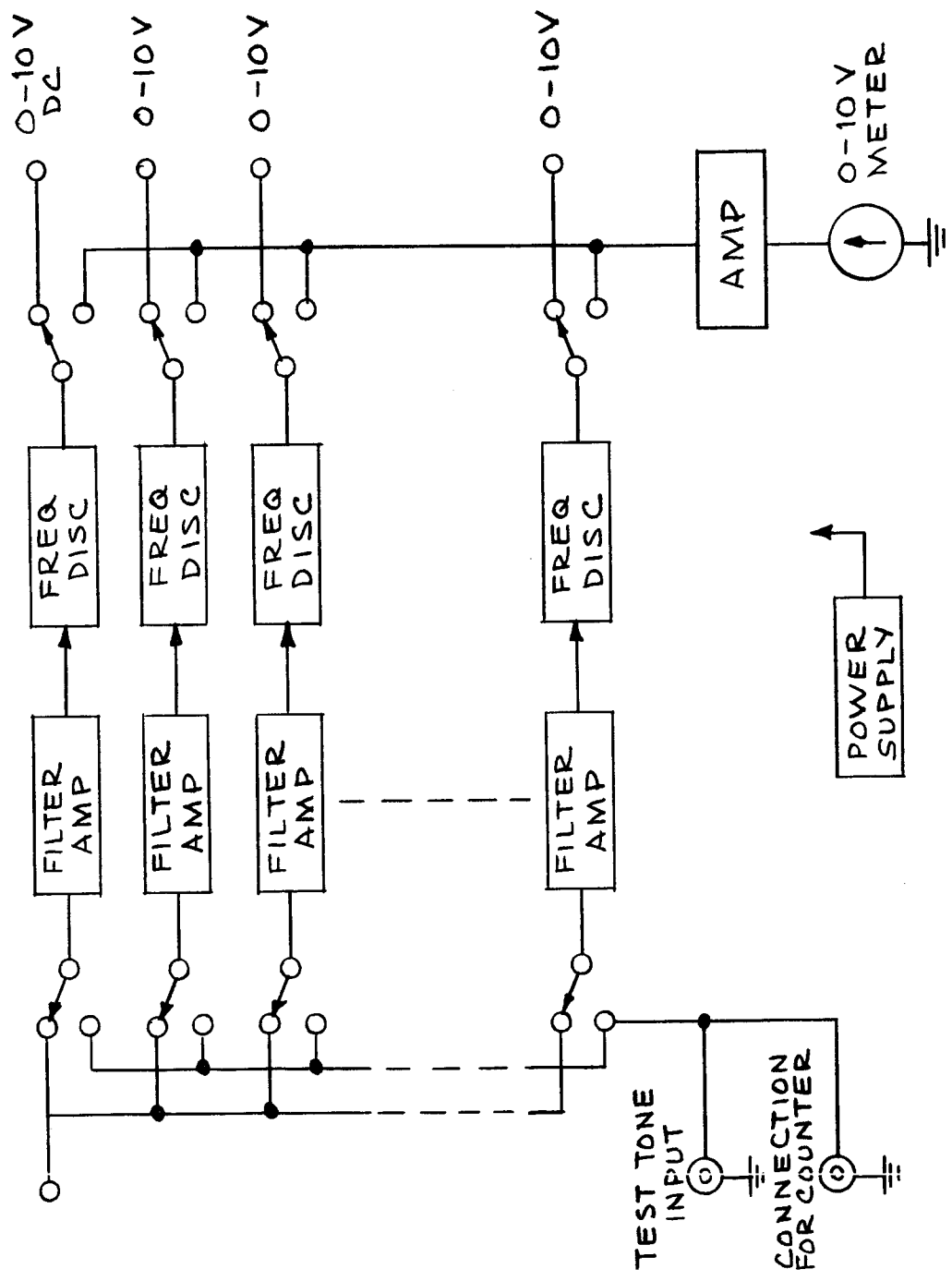
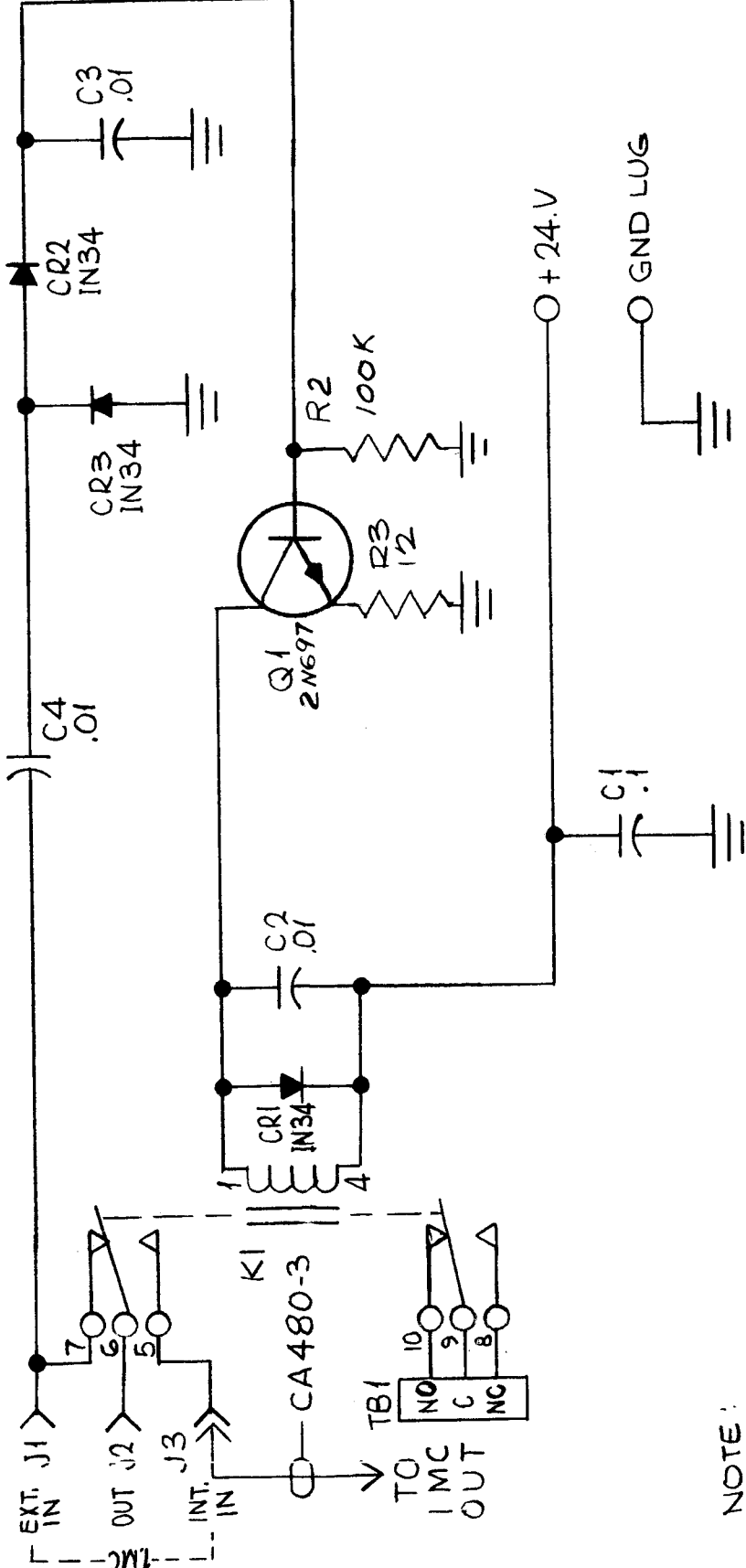


FIGURE 4

REQ. ITEM	PART NO.	DESCRIPTION	SYMBOL
		THE TECHNICAL MATERIEL CORP. MAMARONECK. NEW YORK	
		DIAGRAM, BLOCK	
		RARA-1	
		M TANTILLO 11-25-64	
		DRAWN	CHECKED
		HEAT TREAT. SPEC.	FINAL APPROVAL
		FINISH & SPEC. NO.	ELEC. DES. APP. MECH. DES. APP.
		11/1/65	CK909
		DATE	
		CH. NO.	
		DRAFTS	
		CHECKER	
		ENG. APP.	
		SCALE	
		UNLESS OTHERWISE SPECIFIED DIMENSIONS ARE IN INCHES AND INCLUDE CHEMICALLY APPLIED OR PLATED FINISHES	
		FRACTIONS ± 1/64 ANGLES ± 0° 30'	
		TOLERANCES	
		DECIMALS .X ± .05 .XX ± .01 .XXX ± .005	

CK913 C

USED ON		DATE
REQ. PER UNIT	MODEL	ASSY. NO.
1	KIT-215	AX 546
1	KIT-216	AX 546
		1-25-65
		2-25-65



NOTE:

1. ALL CAPACITORS IN μ F
2. RELAY KI SHOWN ENERGIZED

SYM	DESCRIPTION	DATE	CH. NO.	DRAFTS	CHECKER	ENG. APP.
C	CA480-3 ADDED	6-21-66	16432	N.C.	SRG	SRG
B	R1, 10K DELETED	9/24/65	14848		SRG	SRG
A	G1 WAS 2N1308. Q1 R3 120HMS S1 R2 100K AND NOTE ADDED	8/30/65	14713		SRG	SRG
Ø	ORIGINAL RELEASE FOR PRODUCTION	3-2-65	Ø		SRG	SRG
X	EXP. RELEASE	2-25-65	X		SRG	SRG

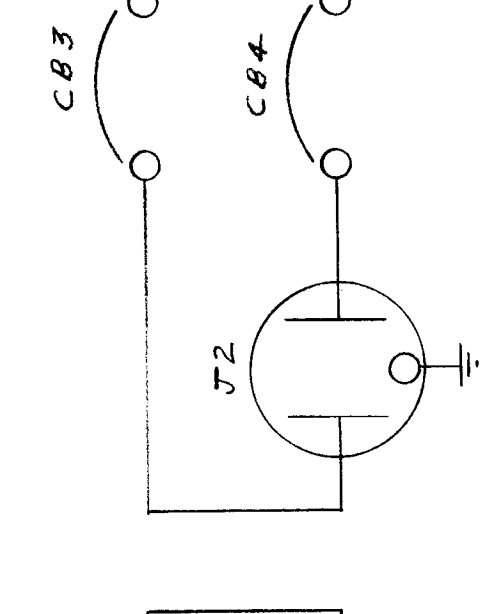
REQ. ITEM	PART NO.	F. BUDETTI	DESCRIPTION	SYMBOL
			THE TECHNICAL MATERIEL CORP. MAMARONECK. NEW YORK	
			SCHEMATIC DIAGRAM	
			1-MC AUTOMATIC SWITCHOVER	
		SRG	CHECKED	
		SRG	DRAWN	
		SRG	FINAL APPROVAL	
			FINISH & SPEC. NO.	CK913 C
			ELEC. DES. APP.	
			MECH. DES. APP.	

REQ. PER UNIT
1

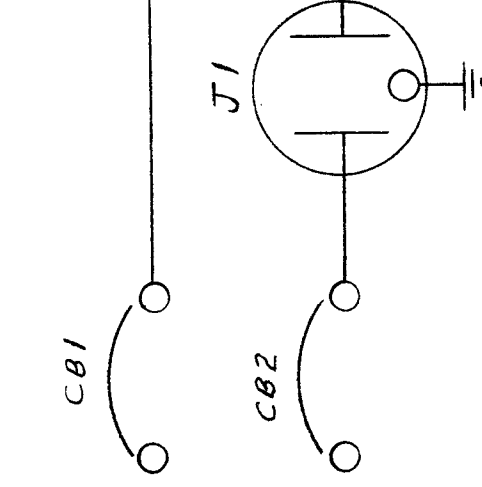
USED ON
MODEL
APP-11

ASSY. NO.
DATE

CK927



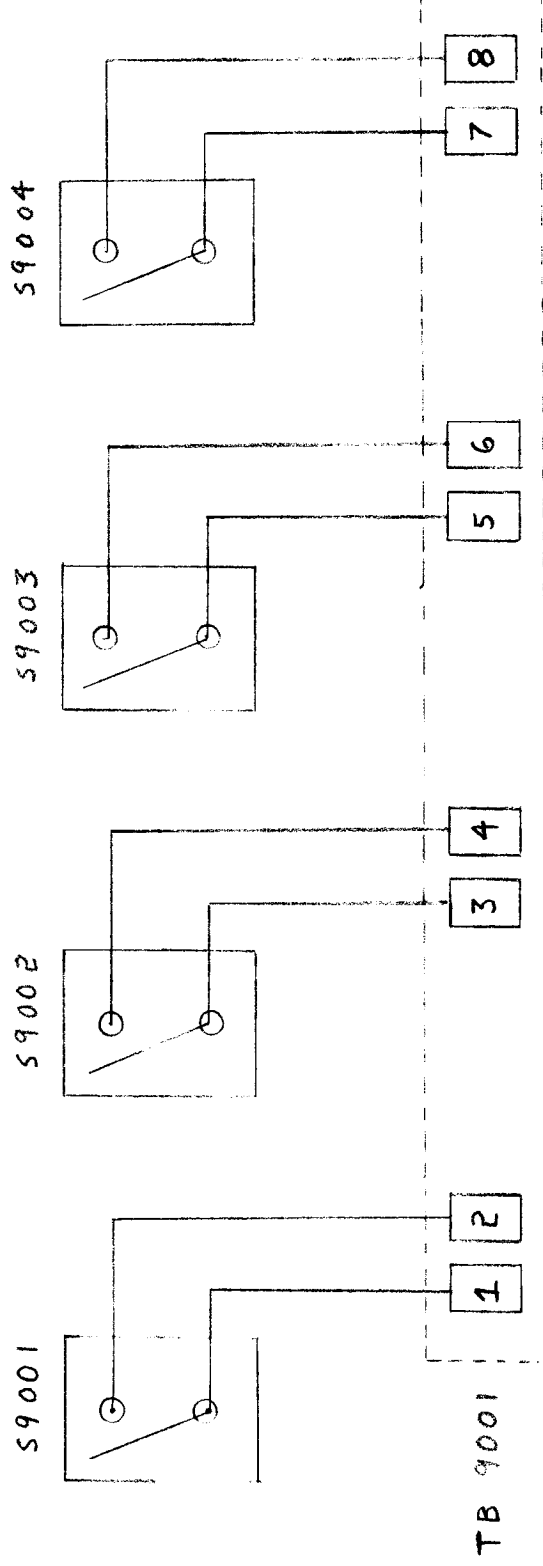
UTILITY



INSTRUMENTATION

REQ. ITEM	PART NO.	DESCRIPTION	SYMBOL
Ø		B.NAP	
X1	3.1.15	THE TECHNICAL MATERIEL CORP. NEW YORK	
X	2.17.65	MAMARONECK. DIAGRAM SCHEMATIC	
SYM			
DESCRIPTION	DATE	CHECKER	ENG. APP.
UNLESS OTHERWISE SPECIFIED	SCALE		
DIMENSIONS ARE IN INCHES AND INCLUDE CHEMICALLY APPLIED OR PLATED FINISHES			
DECIMALS	FRACTIONS	TOLERANCES	CODE
X ± .05	± 1/64	XX ± .01	ANGLES ± 0° 30'
.XX ± .01		.XXX ± .005	
TYPE & TEMPER	HEAT TREAT. SPEC.	DRAWN	FINAL APPROVAL
		WPS	RAL
FINISH & SPEC. NO.	ELEC. DES. APP.	MECH. DES. APP.	
			CK 927

REQ. PER UNIT	USED ON	CK 929
	MODEL ASSY. NO.	AX559
	DATE	



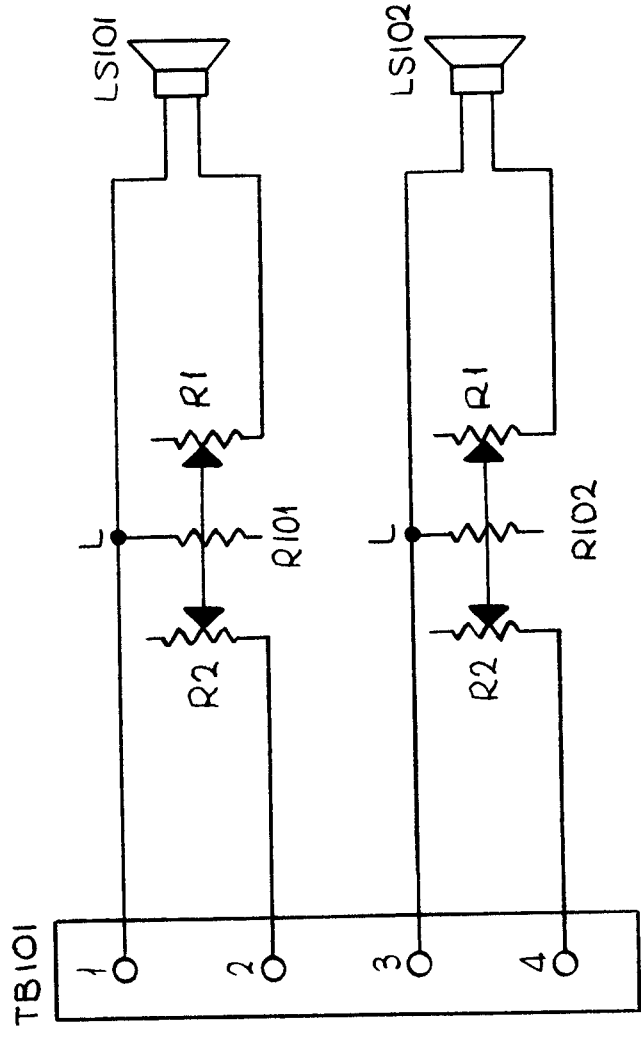
SHOWN IN STANDBY POSITION

REQ. ITEM	PART NO.	DESCRIPTION	SYMBOL
			Ø
Ø		UNLESS OTHERWISE SPECIFIED DIMENSIONS ARE IN INCHES AND INCLUDE CHEMICALLY APPLIED OR PLATED FINISHES	
X		TOLERANCES	
		DECIMALS	
		.X ± .05	
		.XX ± .01	
		.XXX ± .005	
		UNLESS OTHERWISE SPECIFIED DIMENSIONS ARE IN INCHES AND INCLUDE CHEMICALLY APPLIED OR PLATED FINISHES	
		SCALE	
		CODE	
	2/24/65	DATE	
	HUA	DRAFTS CHECKER	
	2-19-65	DATE	
		CH. NO.	
		ENG. APP.	
		MATERIAL	
		TYPE & TEMPER	
		HEAT TREAT. SPEC.	
		DRAWN	
		CHECKED	
		FINAL APPROVAL	
			CK 929
			Ø

THE TECHNICAL MATERIEL CORP.
 MAMARONECK, NEW YORK
 SCHEMATIC DIAGRAM

CK931 Ø

REQ. PER UNIT	1
MODEL	LSP-15
USED ON ASS'Y. NO.	
DATE	2-24-65

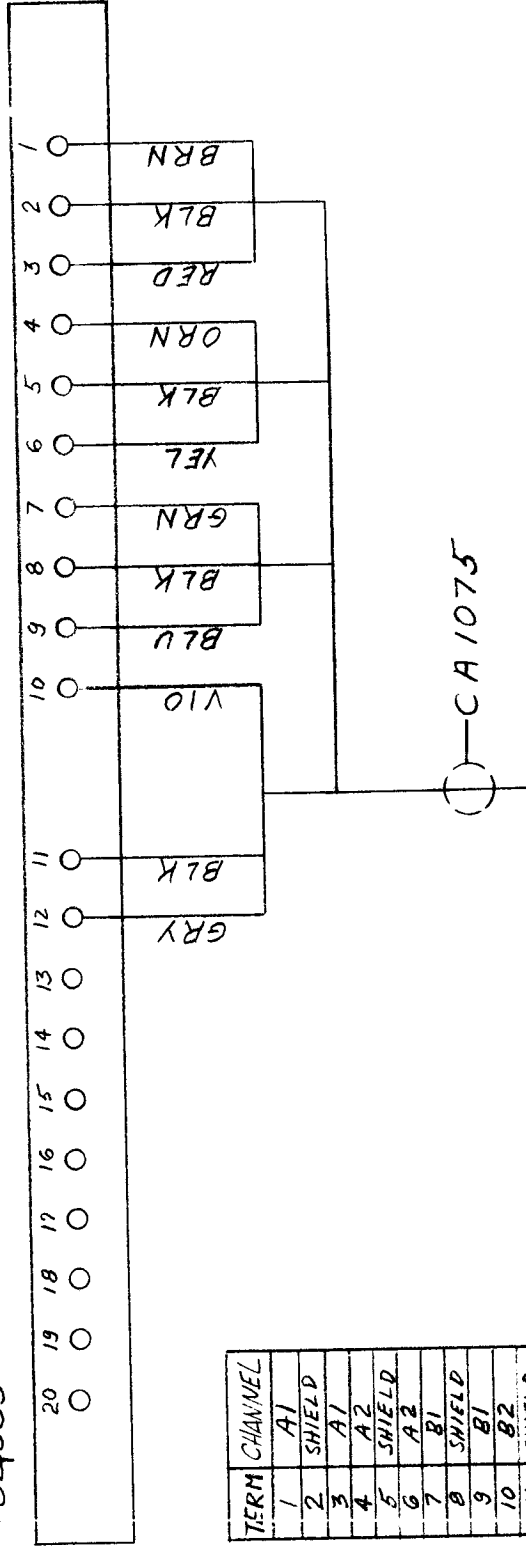


REQ. ITEM	PART NO.	HAY	DESCRIPTION	SYMBOL
			THE TECHNICAL MATERIEL CORP. MAMARONECK, NEW YORK	
			SCHEMATIC DIAGRAM	
		SRG	DRWN	FINAL APPROVAL
			CHECKED	
			MECH. DES. APP.	
			ELEC. DES. APP.	
			FINISH & SPEC. NO.	
			TYPE & TEMPER	
			HEAT TREAT. SPEC.	
			MATERIAL	
			STOCK SIZE	
			SCALE	
			DATE	
			CH. NO.	
			DRAFTS	
			CHECKER	
			ENG. APP.	
			DESCRIPTION	
			UNLESS OTHERWISE SPECIFIED	
			DIMENSIONS ARE IN INCHES AND INCLUDE	
			CHEMICALLY APPLIED OR PLATED FINISHES	
			TOLERANCES	
			DECIMALS	
			X ± .05	
			.XX ± .01	
			.XXX ± .005	
			FRACTIONS	
			± 1/64	
			ANGLES	
			± 0° 30'	
			CODE	
			DATE	
			2/24/65	
			2-24-65	
			X	
			SRG	
			SRG	
			ORIGINAL RELEASE FOR PRODUCTION	
			EXP. RELEASE	
			Ø	

REQ. PER UNIT	1
MODEL	75TE10K/AX363
USED ON	ASSY. NO. A4212
DATE	23 MAR 65
CK 943	

BOTTOM VIEW

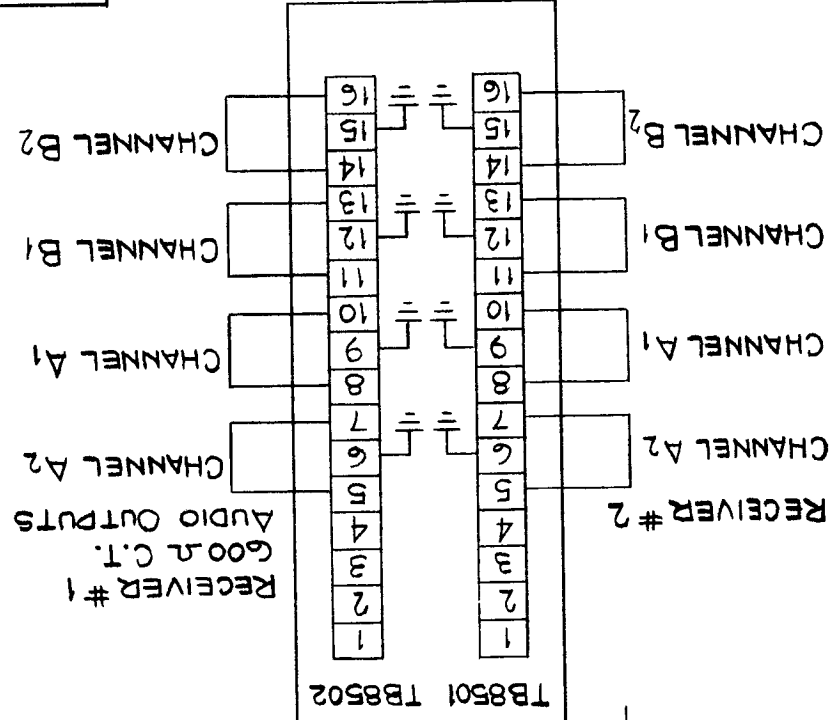
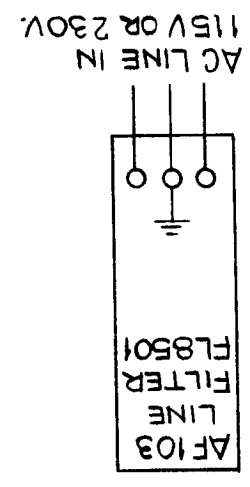
TB4005



TERM	CHANNEL
1	A1
2	SHIELD
3	A1
4	A2
5	SHIELD
6	A2
7	B1
8	SHIELD
9	B1
10	B2
11	SHIELD
12	B2
13	
14	
15	
16	
17	
18	
19	
20	

REQ. ITEM	PART NO.	DESCRIPTION	SYMBOL
		B.N.A.P.	
		THE TECHNICAL MATERIEL CORP. MAMARONECK, NEW YORK	
		WIRING DIAGRAM	
		AUDIO INPUT TB4005	
		CHECKED	FINAL APPROVAL
		DRAWN	
		ELEC. DES. APP.	MECH. DES. APP.
		CK 943	
		STOCK SIZE	
		MATERIAL	
		TYPE & TEMPER	HEAT TREAT. SPEC.
		FINISH & SPEC. NO.	
SYM	DESCRIPTION	DATE	CH. NO.
Ø	ORIGINAL RELEASE FOR PRODUCTION	5/17/66	Ø
		SCALE	
		DRAFTS	CV
		CHECKER	
		ENG. APP.	
UNLESS OTHERWISE SPECIFIED DIMENSIONS ARE IN INCHES AND INCLUDE CHEMICALLY APPLIED OR PLATED FINISHES		FRACTIONS ± 1/64 ANGLES ± 0° 30'	
TOLERANCES			
.X ± .05			
.XX ± .01			
.XXX ± .005			

REQ. PER UNIT:
 MODEL: DDR-5L
 ASS'Y. NO.
 DATE
 USED ON:
 CK959
 Ø



QDS
ANTENNA
RECEPTACLES

USE PL156
PLUGS
FOR RG58/u

REC #1
J8502

REC #2
J8501

FILTER BOX

NOTE:
 INDIVIDUAL EQUIPMENT
 MUST BE WIRED FOR
 115V OR 230V AS REQUIRED.

REQ. ITEM	PART NO.	DESCRIPTION	SYMBOL
		THE TECHNICAL MATERIEL CORP. MAMARONECK, NEW YORK	
		DDR5L EXTERNAL CONNECTIONS	
		NLA	
		DRAWN	
		CHECKED	
		FINAL APPROVAL	
		CK959	Ø
		ELEC. DES. APP. MECH. DES. APP.	
		FINISH & SPEC. NO.	
		TYPE & TEMPER HEAT TREAT. SPEC.	
		MATERIAL	
		STOCK SIZE	
		SCALE	
		DATE	
		CH. NO.	
		DRAFTS	
		CHECKER	
		ENG. APP.	
		DESCRIPTION	
		UNLESS OTHERWISE SPECIFIED DIMENSIONS ARE IN INCHES AND INCLUDE CHEMICALLY APPLIED OR PLATED FINISHES	
		TOLERANCES	
		FRACTIONS	
		DECIMALS	
		ANGLES	

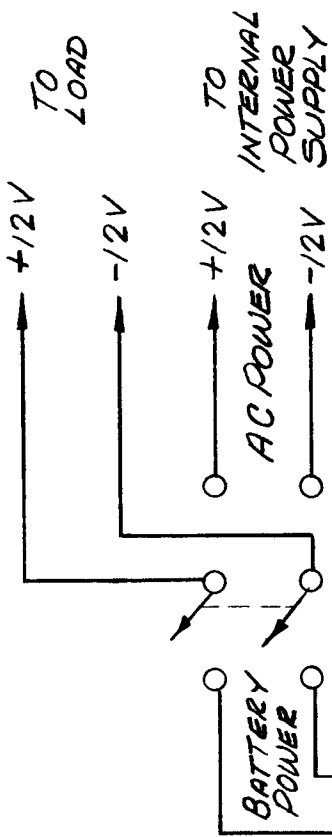
REQ. PER UNIT
1

USED ON
MODEL
STR-26

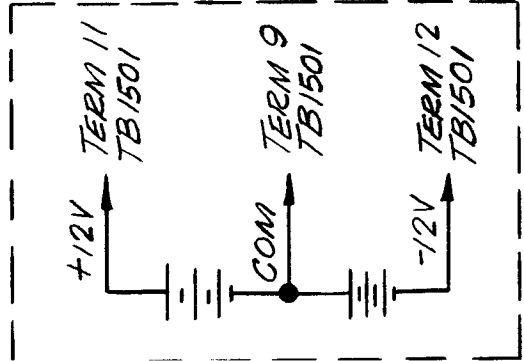
ASSY. NO.
DATE

CK992 A

EXTERNAL BATTERY,
CUSTOMER SUPPLIED



TB/501



1	○	NC
2	○	NC
3	○	0 DBM
4	○	600 OHM
5	○	SQUELCH ALARM
6	○	
7	○	
8	○	
9	○	GND
10	○	SPKR
11	○	+12V
12	○	-12V

REQ. ITEM	PART NO.	DESCRIPTION	SYMBOL
		THE TECHNICAL MATERIEL CORP. MAMARONECK, NEW YORK	
	STOCK SIZE	DIAGRAM, SCHEMATIC, SPECIAL	
	MATERIAL	MODIFICATION STR-2	
	HEAT TREAT. SPEC.	H. AUSTIN	
	TYPE & TEMPER	DRAWN	
	FINISH & SPEC. NO.	CHECKED	
		ELEC. DES. APP.	
		MECH. DES. APP.	
		FINAL APPROVAL	
		CK992	A

SYM	DESCRIPTION	DATE	CH. NO.	DRAFTS	CHECKER	ENG. APP.
A	DELETED F908, F909, CR1501 CR1502	5/26/66	16285	C.H.	JCB	JCB
Ø	ORIGINAL RELEASE	7/3/66	Ø			

UNLESS OTHERWISE SPECIFIED
DIMENSIONS ARE IN INCHES AND INCLUDE
CHEMICALLY APPLIED OR PLATED FINISHES

TOLERANCES

FRACTIONS
± 1/64
ANGLES
± 0° 30'

DECIMALS
X ± .05
XX ± .01
XXX ± .005

SCALE

CODE