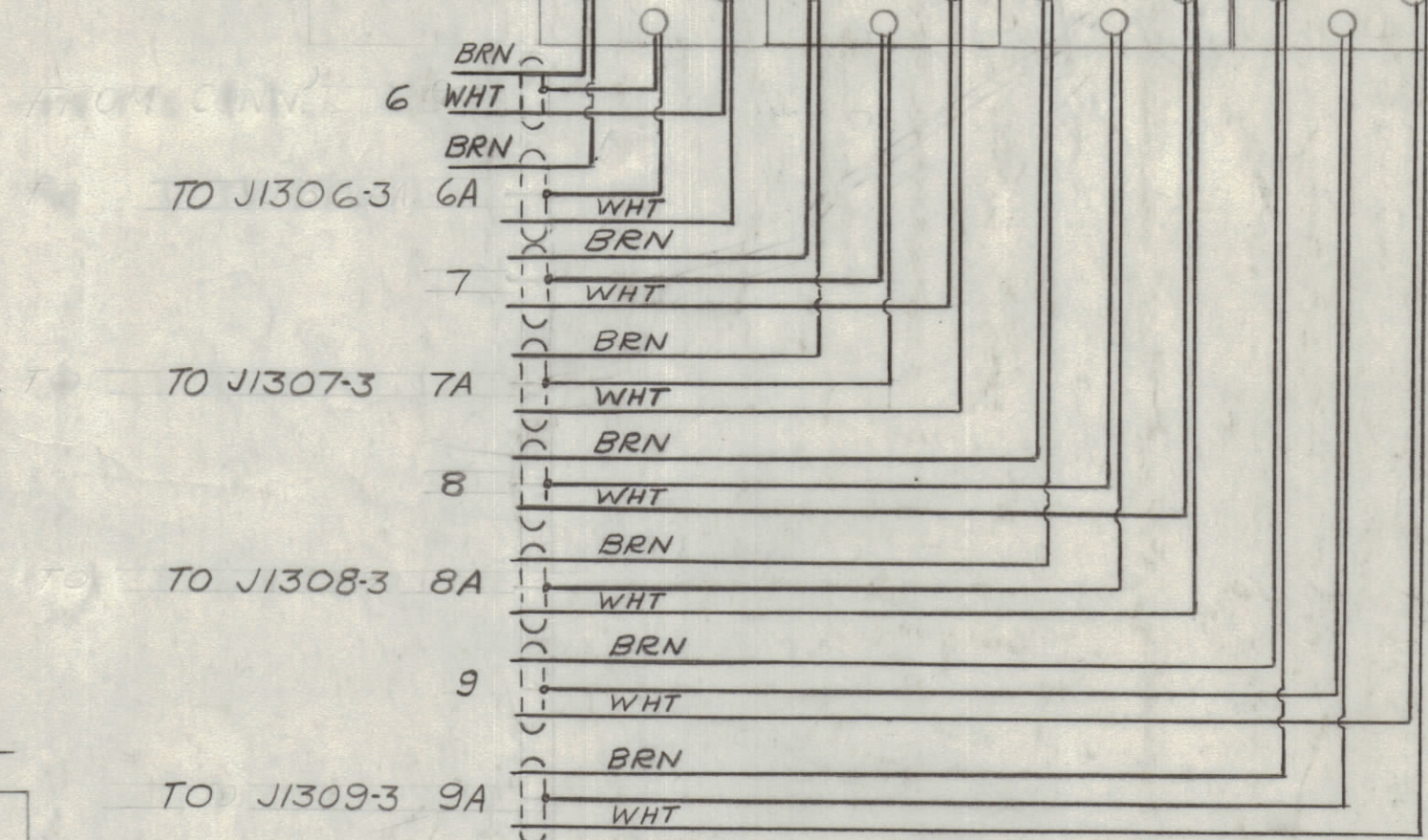
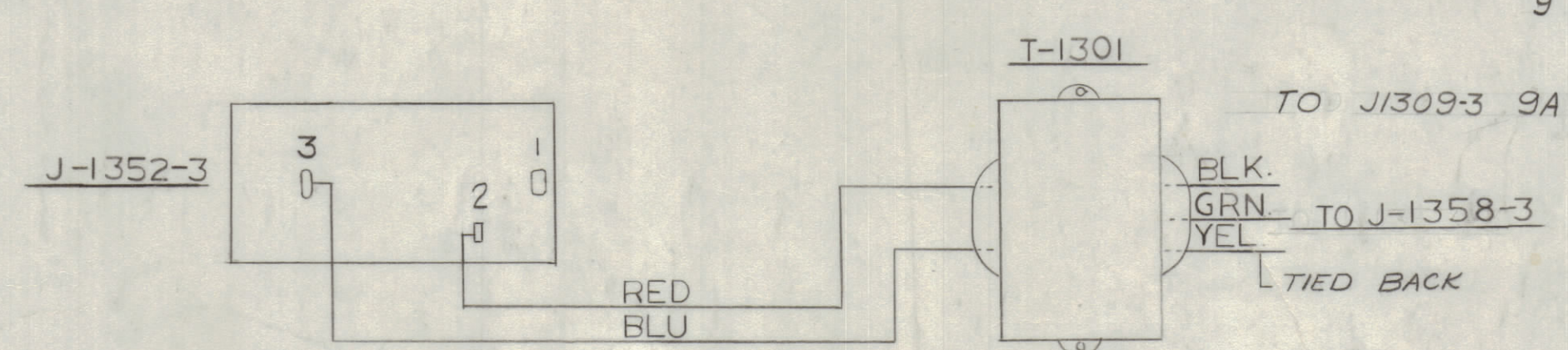
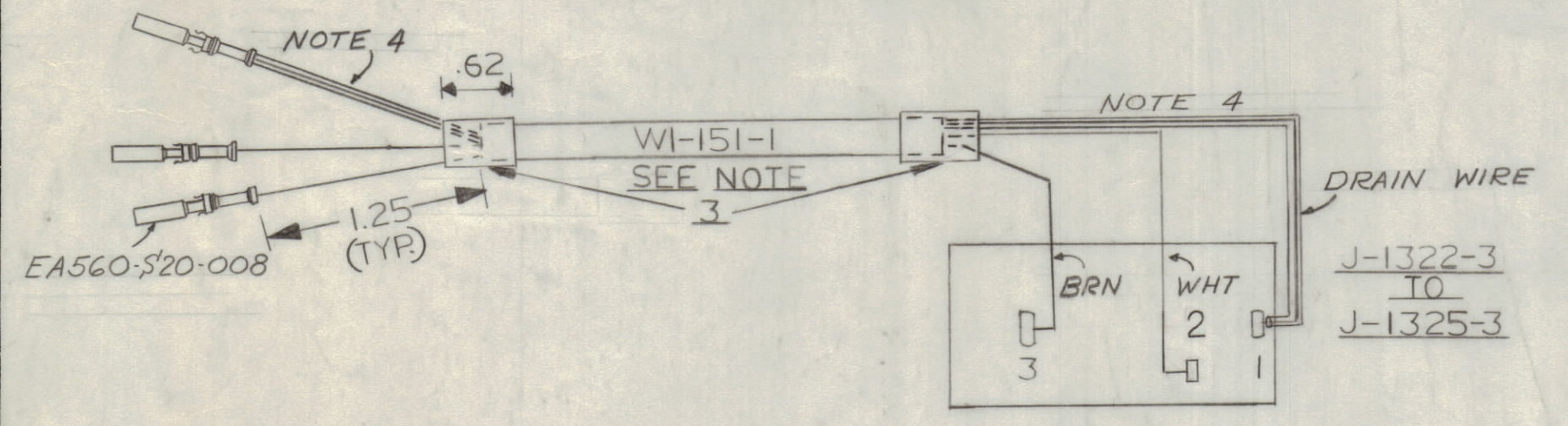
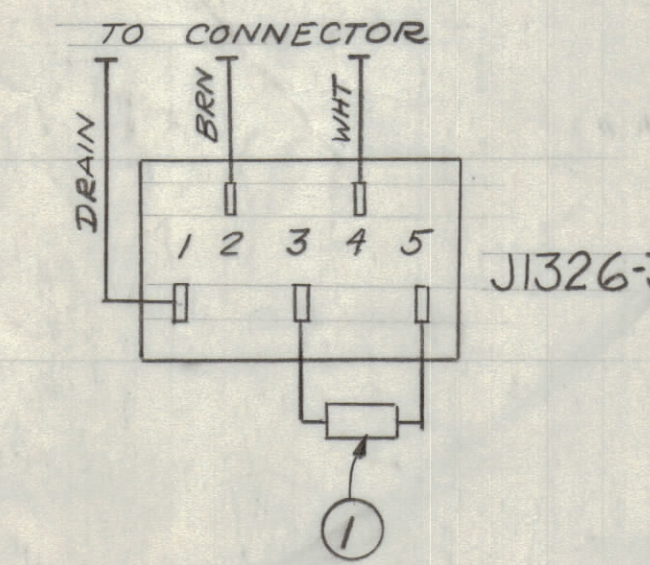
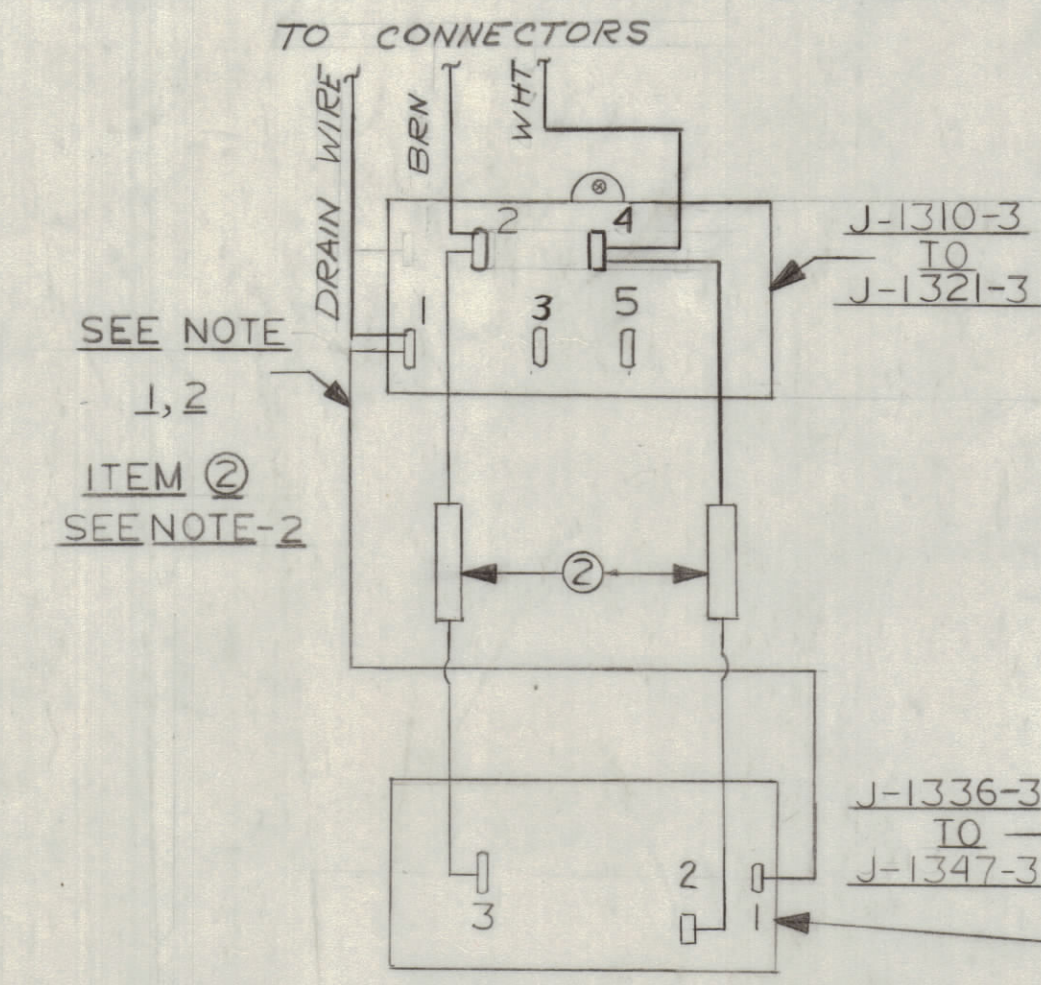
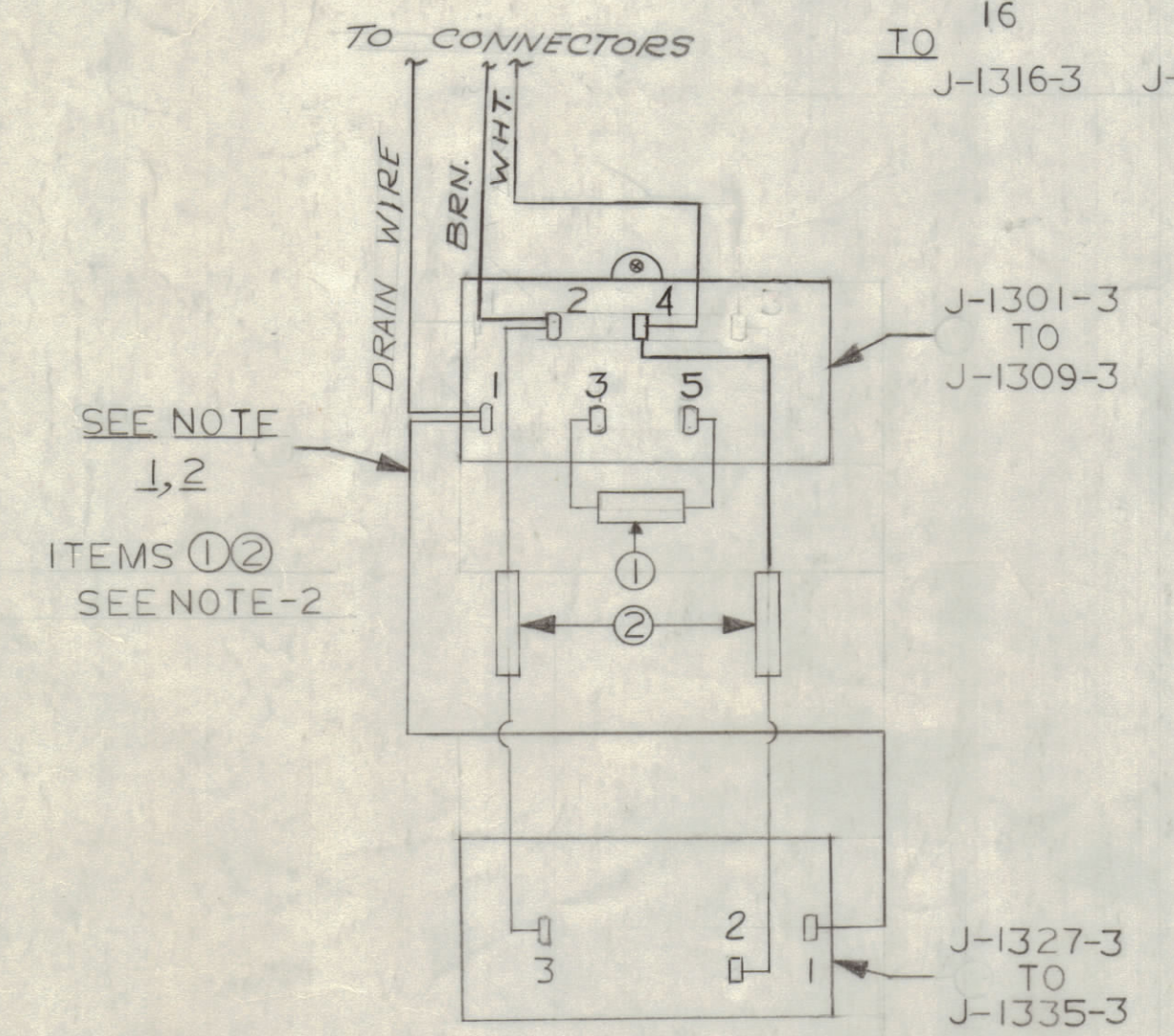
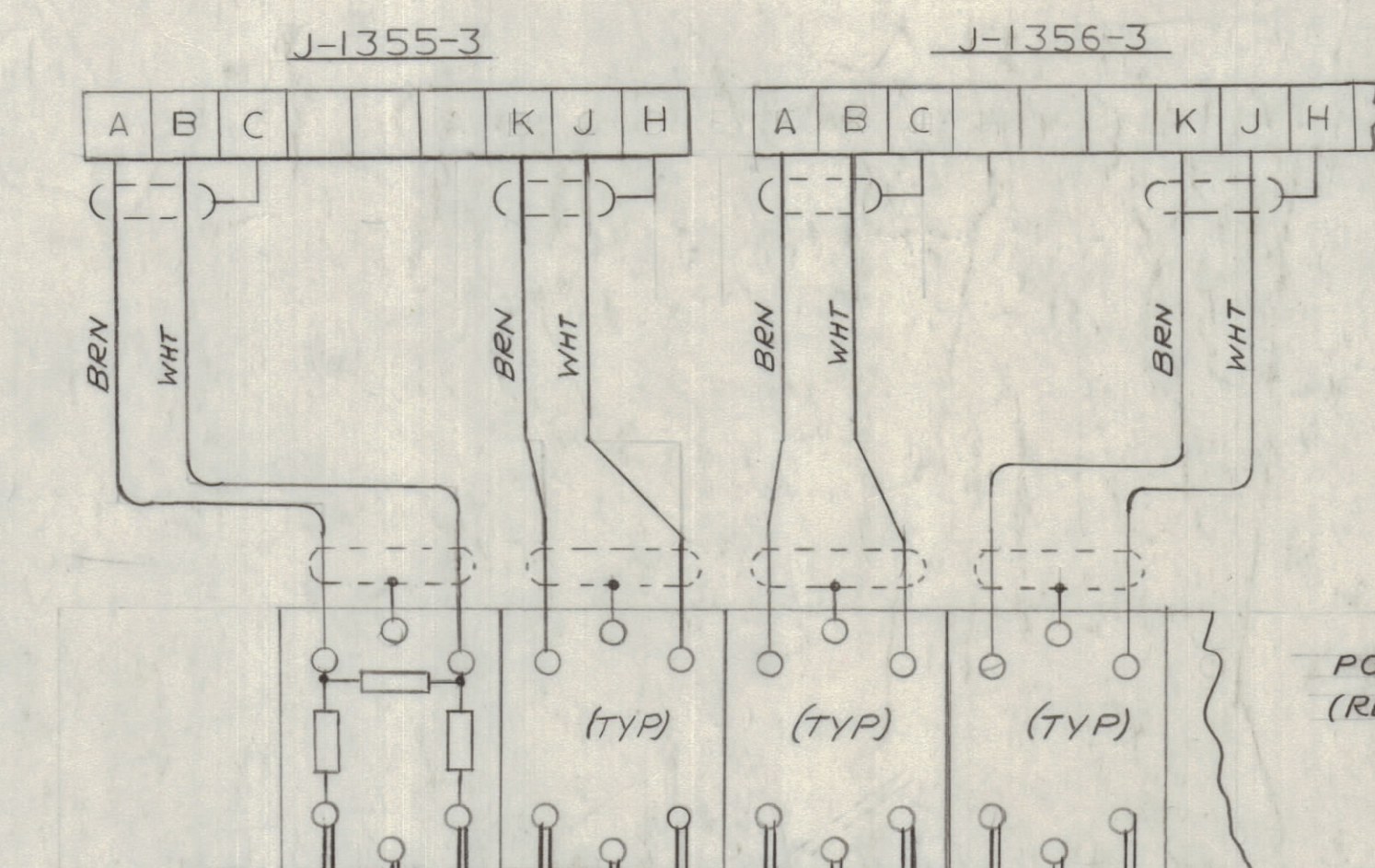
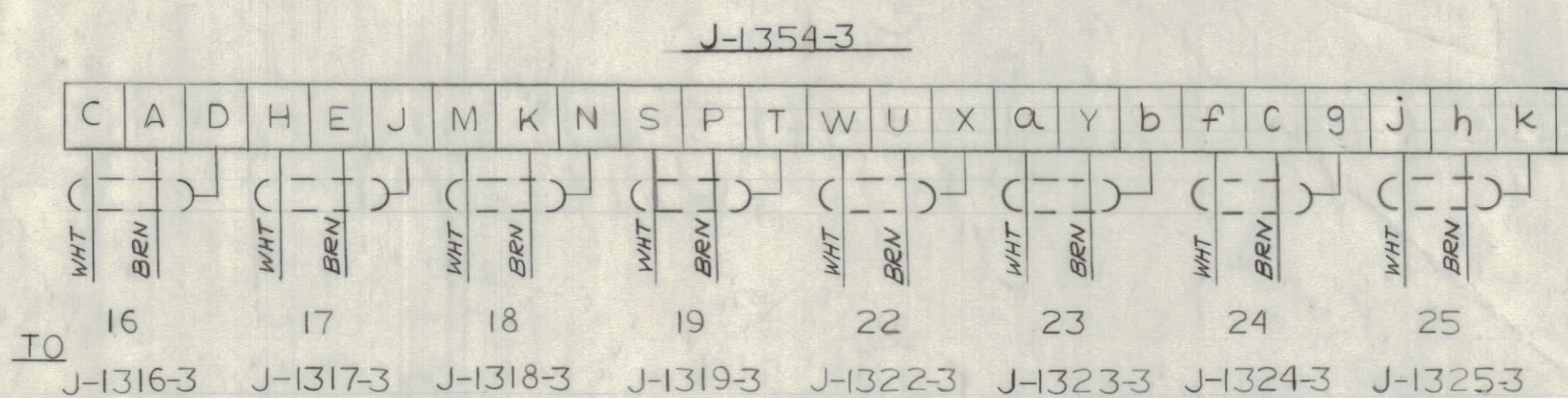
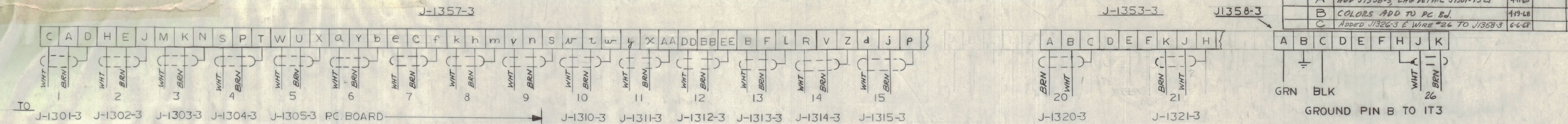
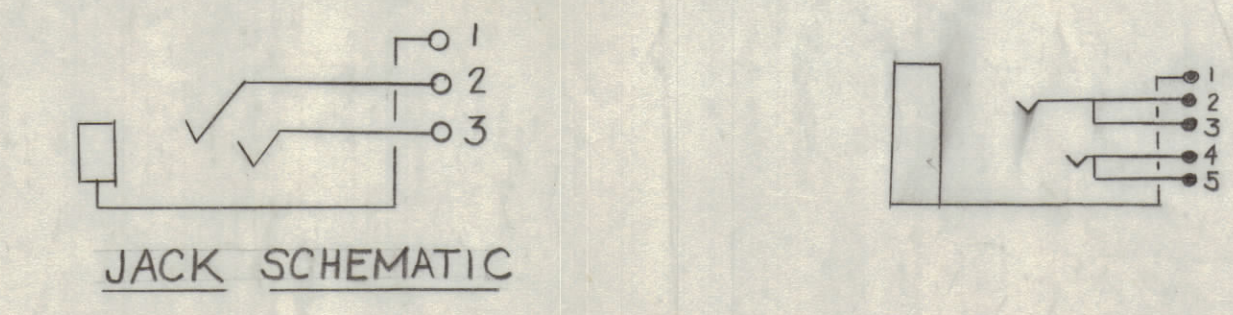


REVISIONS					
ZONE	LTR	DESCRIPTION	DATE	E.M.N.NO	DRAF.
A		ADD J1358-3 CHG DETAIL J1301-1321	4-11-68		QB
B		COLORS ADD TO PC Bd.	4-19-68		QB
C		Added J1326-3 & Wire #26 TO J1358-3	6-6-68		QB



PC BOARD
(REF A8005)

- NOTE 1- JUMPER NO. 22 BUSS(WL-100-7)
 2- INSTALL INS, SLVG,(PX-104-1-042)
 ON JUMPER AND RESISTORS.
 3-SHRINK TUBING PX-830-12-1
 4- INSULATE PX100-1-042



QTY. REQ.	ITEM	PART NO.	DESCRIPTION	SYMBOL
1	3	TE104-1	TERM LUG, LOCKING	
42	2	RC206F 102J	RES. FIXED	
10	1	RC426F 561J	RES. FIXED	

LIST OF MATERIAL

UNLESS OTHERWISE SPECIFIED DIMENSIONS ARE IN INCHES AND INCLUDE CHEMICALLY APPLIED OR PLATED FINISHES		FINAL APPROVAL <i>YJM</i>	DATE 3-5-68	THE TECHNICAL MATERIEL CORP. MAMARONECK, NEW YORK
TOLERANCES ON		ELECT. DES. <i>Frank D. Donnell</i>	DATE 1-24-68	
DECIMALS .X ± .05 .XX ± .01 .XXX ± .005	FRACTIONS ± 1/64 ANGLES ± 0°-30'	CHECKED <i>Frank D. Donnell</i>	DATE 1-31-68	
APPLICATION		DRAWN <i>QB</i>	DATE 1-30-68	

QTY / UNIT	MODEL USED ON	ASSY NO.

NOTICE TO PERSONS RECEIVING THIS DRAWING
 THE TECHNICAL MATERIEL CORPORATION claims proprietary right in the material disclosed hereon. This drawing is issued in confidence for engineering information only and may not be reproduced or used to manufacture anything shown hereon without permission from THE TECHNICAL MATERIEL CORPORATION to the user. This drawing is loaned for mutual assistance and is subject to recall at any time.

SIZE	CODE IDENT.NO.	DWG NO.	ISSUE
D	82679	CK8046	C