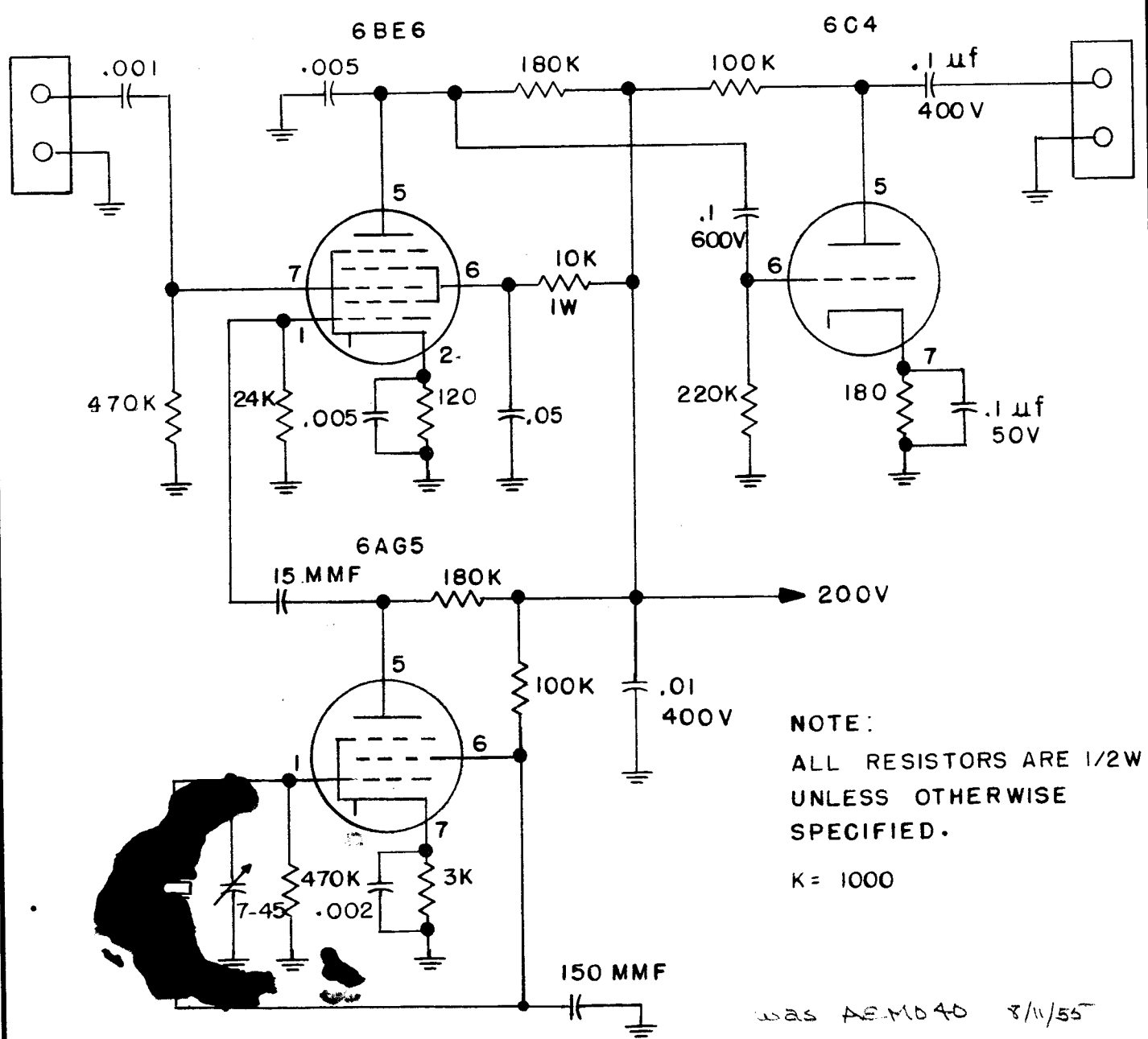
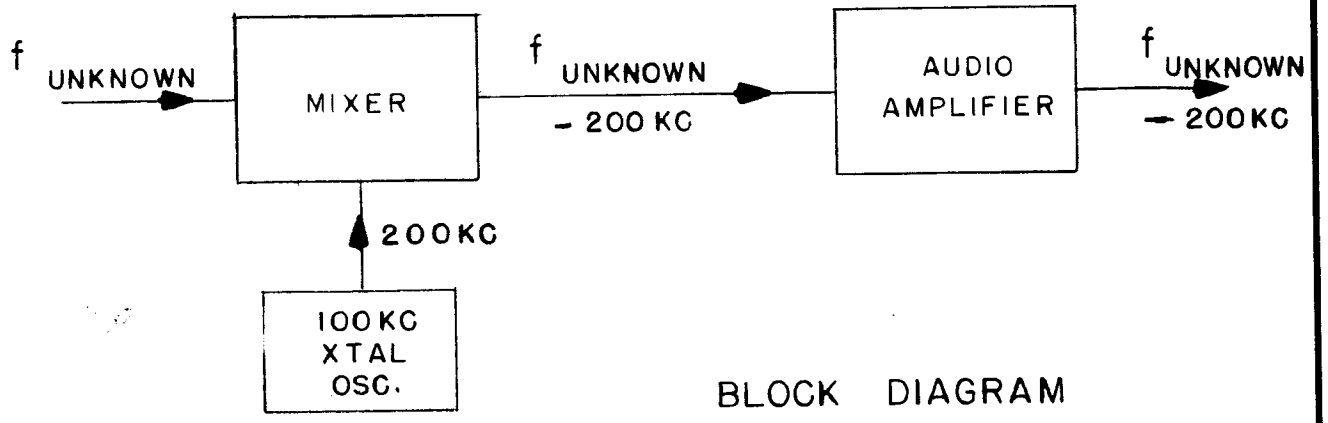


CK-306



**NOTE:**  
 ALL RESISTORS ARE 1/2W  
 UNLESS OTHERWISE  
 SPECIFIED.  
 K = 1000

was AEMD40 8/11/55

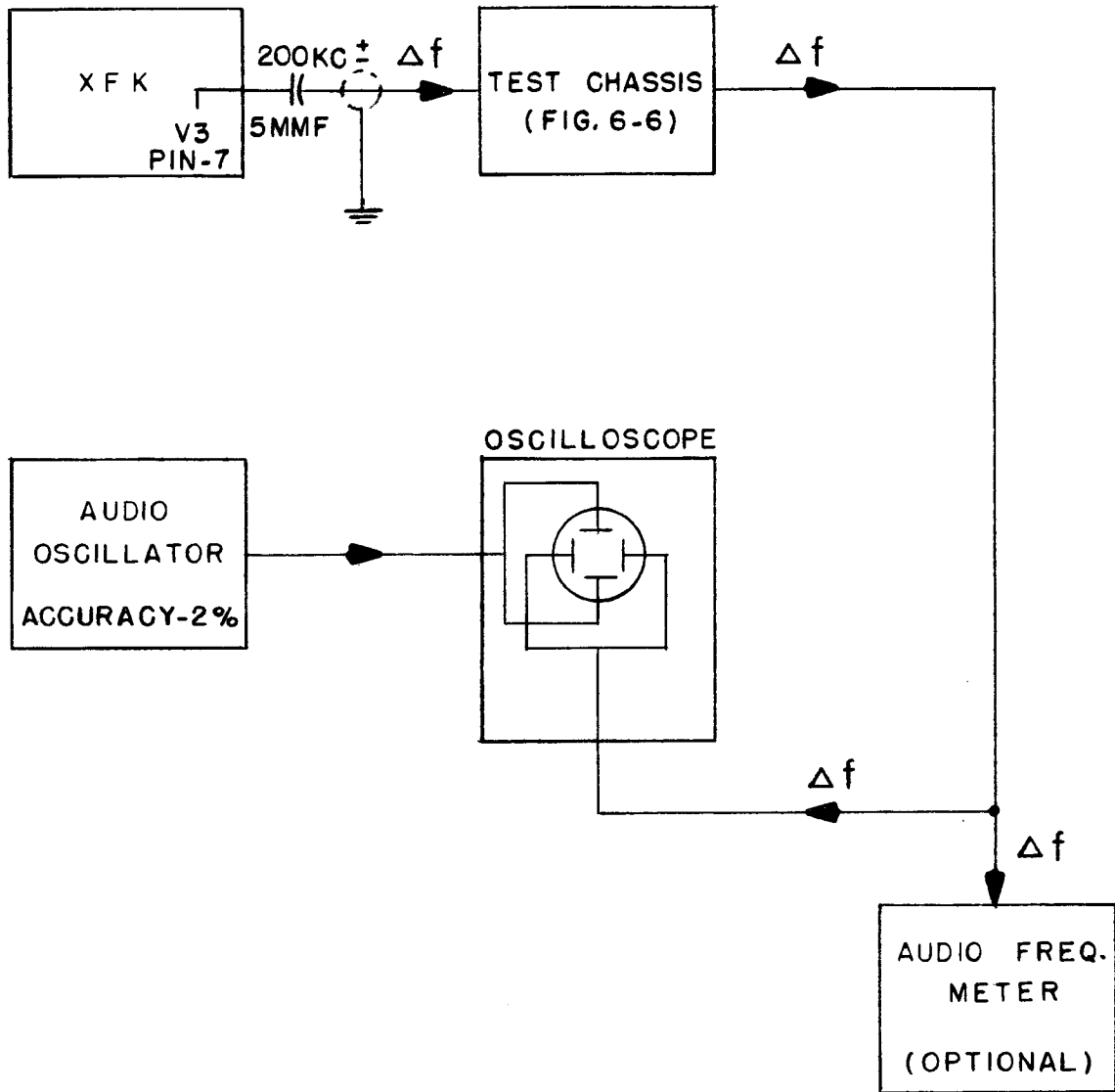
DATE	10-23-51
DRN.	JADe
CHKD.	APP
APPD.	J

**FIGURE 6-6  
 TEST CHASSIS**

MODEL XFK

**THE TECHNICAL MATERIEL  
 CORPORATION**  
 MAMARONECK, NEW YORK

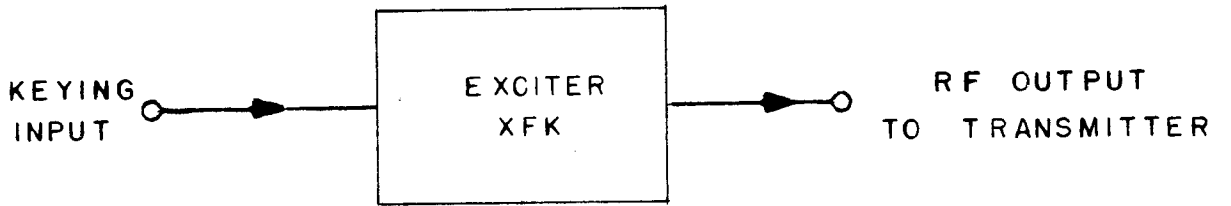
CK-307



W. AEMD41 5/11/55

DATE 10-23-51	FIGURE 6-7 BLOCK DIAGRAM	THE TECHNICAL MATERIEL CORPORATION			
DRN. <i>JAD</i>		MAMARONECK, NEW YORK			
CHKD. <i>APB</i>		MODEL XFK	SHEET	OF	NO. CK-307
APPD. <i>[Signature]</i>					

CK 308



was approved 8/11/55

FIGURE 1-2

DATE 10-9-51	SIMPLIFIED BLOCK DIAGRAM OF APPLICATION  MODEL XFK	THE TECHNICAL MATERIEL CORPORATION MAMARONECK, NEW YORK		
DRN. JADe		SHEET	OF	
CHKD. EJ				NO. CK-308
APPD. EQ				

CK-309

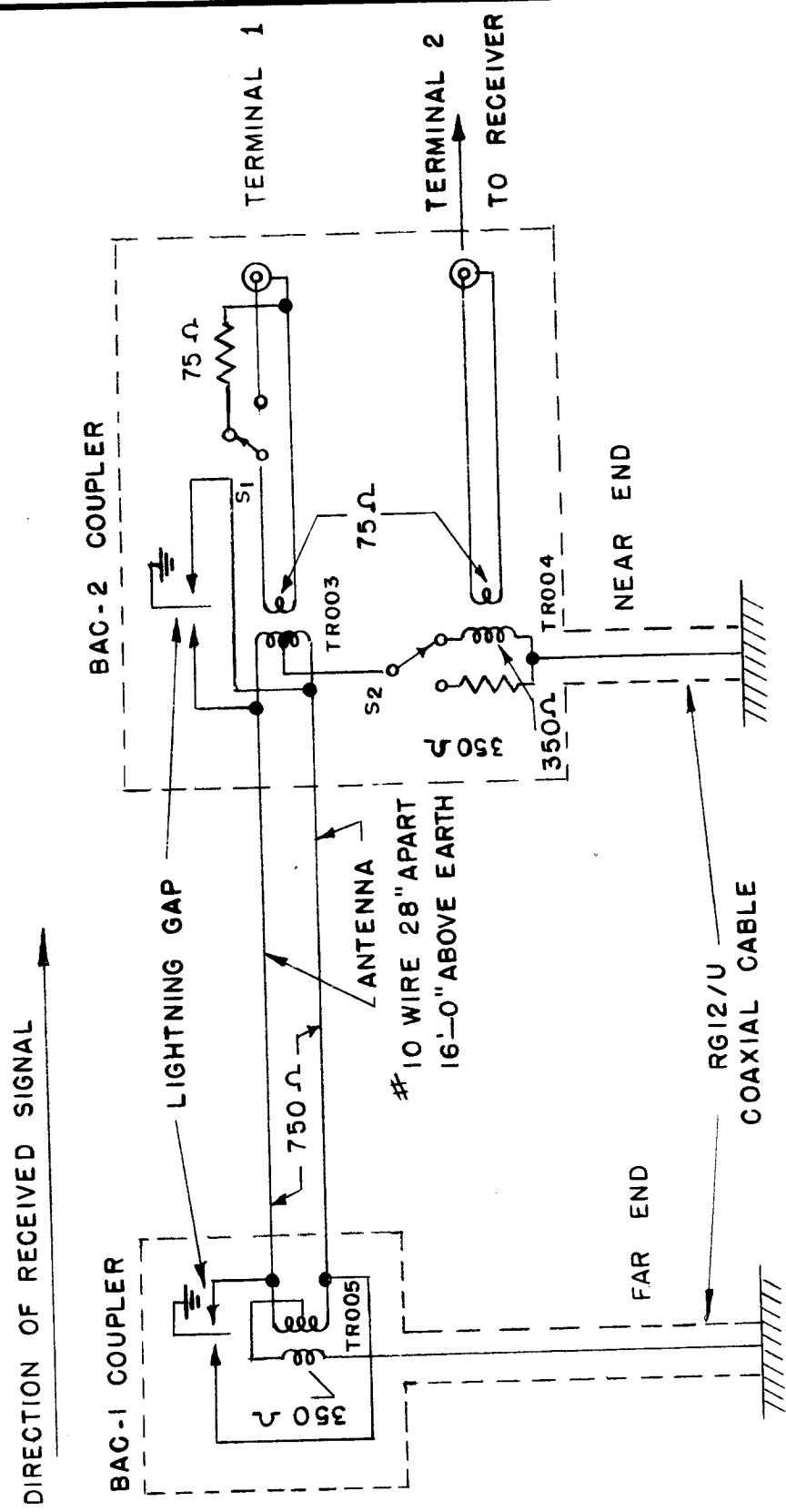


FIGURE 1  
DIRECTION OF RECEIVED SIGNAL FROM FAR END

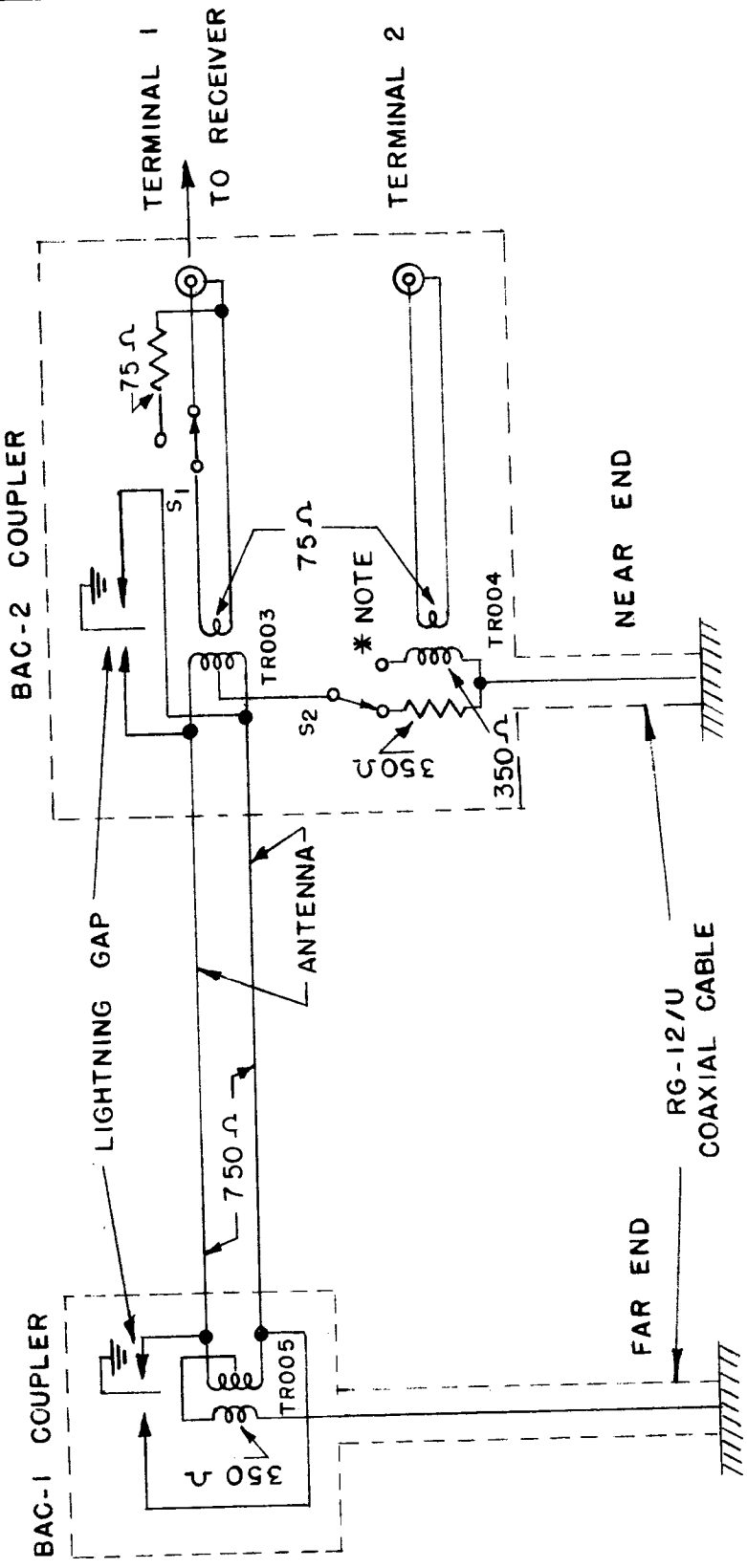
was added 8/1/51

DATE	6-7-51	BEVERAGE WAVE ANTENNA COUPLER	THE TECHNICAL MATERIEL CORPORATION	
DRN.	<i>JAG</i>			
CHKD.	<i>ku</i>		SHEET	OF
APPD.	<i>WJF</i>		MODEL BAC-1, BAC-2	

CM-311

to 647

DIRECTION OF RECEIVED SIGNAL



\* NOTE:

THIS SWITCH IS CONNECTED TO THE COIL SIDE AND A RECEIVER CONNECTED TO TERMINAL 2 FOR SIMULTANEOUS RECEPTION OF SIGNALS IN EITHER DIRECTION.

FIGURE 2  
DIRECTION OF RECEIVED SIGNAL FROM NEAR END

WAS 78501A (8/11/55)

DATE	6-7-51	BEVERAGE WAVE ANTENNA COUPLER	THE TECHNICAL MATERIEL CORPORATION		
DRN.	<i>[Signature]</i>				MAMARONECK, NEW YORK
CHKD.	<i>[Signature]</i>		SHEET	OF	
APPD.	<i>[Signature]</i>				NO. CM-311
		MODEL BAC-1, BAC-2			

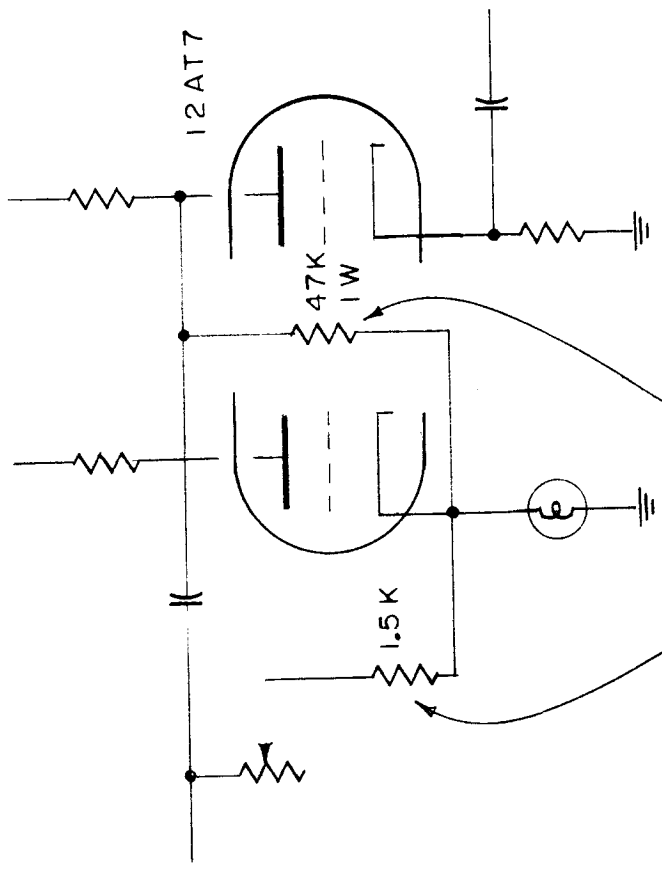
IF IT IS FOUND DESIRABLE TO CHANGE ANY TOLERANCE OR OTHER DETAIL SPECIFIED ON THIS DRAWING NOTIFY THE PURCHASER PROMPTLY.

MAXIMUM ALLOWABLE TOLERANCES HAVE BEEN DETERMINED AND DEVIATIONS WILL BE CAUSE FOR REJECTION. REMOVE ALL BURRS AND SHARP EDGES

CK-313

USED ON

REQ. PER UNIT PROJECT NO. ASSY. NO. DATE



TUBE SYMBOL  
 V1  
 V3  
 V5

SYMBOL  
 R53  
 R55  
 R57

REQ. ITEM	PART NO.	DESCRIPTION	SYMBOL
		THE TECHNICAL MATERIEL CORP.	
		MAMARONECK, NEW YORK	
		OSCILLATOR CIRCUIT	
		ADDITIONAL RSC-2	
		000 9/11K KZ M.H.S.	
		TYPE & TEMPER	ELEC. DES. APP.
		HEAT TREAT. SPEC.	MECH. DES. APP.
		FINISH & SPEC. NO.	FINAL APPROVAL
			CK-313

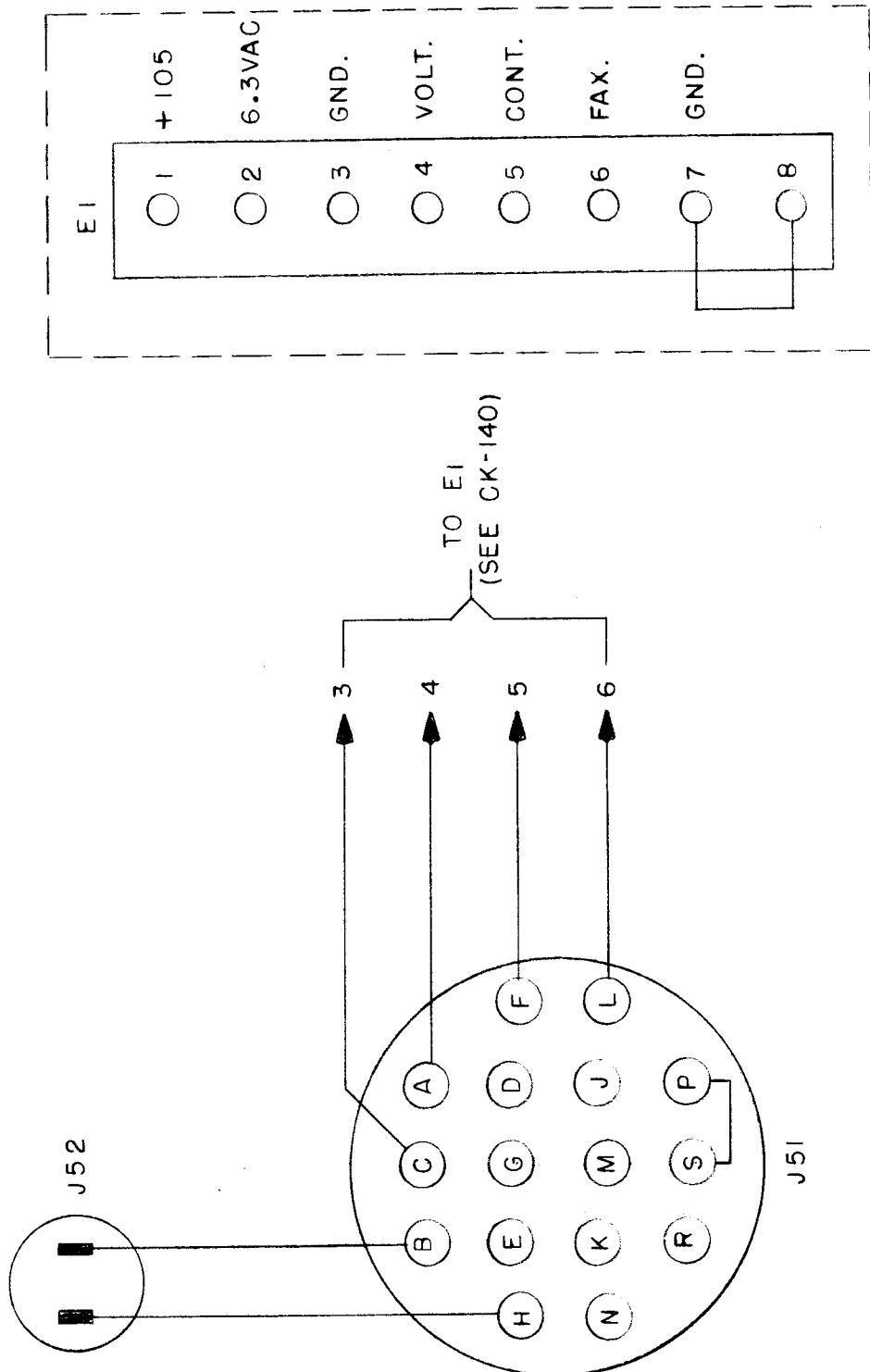
  

ISSUE ITEM	CHANGED FROM	DATE	CN. NO.	DRAFTS	CHECKER	ENG. APP.

TOLERANCES	
DEC. DIM. ±	DRILL, PUNCH, COMMERCIAL STOCK
FRAC. DIM. ±	SIZES AND MANUFACTURERS
OTHERS	TOLERANCES ARE NOT INCLUDED.
ANGULAR DIM. ±	

REQ. PER UNIT	USED ON	CK - 323	A
	MODEL	A959	
	ASSY. NO.		
	DATE		

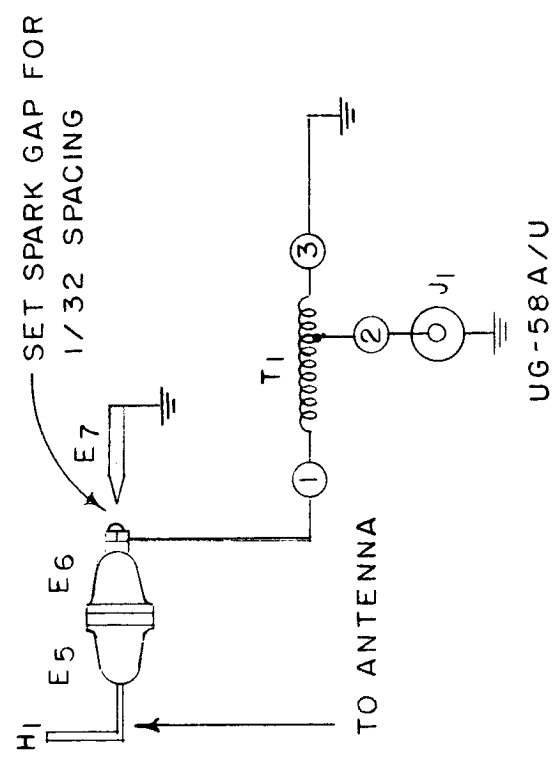


REQ. ITEM	PART NO.	DESCRIPTION	SYMBOL
		THE TECHNICAL MATERIEL CORP. MAMARONECK. NEW YORK	
		FS - EXCITER PANEL ASSY	
		A 959	
		1-6-56	A J J
		DRAWN	CHECKED
		WIP	WIP
		ELEC. DES. APP.	MECH. DES. APP.
		FINISH & SPEC. NO.	CK - 323
			A
<p>TOLERANCES</p> <p>DEC. DIM. ±</p> <p>FRAC. DIM. ±</p> <p>ANGULAR DIM. ±</p> <p>MAXIMUM ALLOWABLE TOLERANCES HAVE BEEN DETERMINED AND ANY DEVIATIONS WILL BE CAUSE FOR REJECTION. REMOVE ALL BURRS AND SHARP EDGES</p>			

REQ. PER UNIT	MODEL	USED ON ASSY. NO.	DATE
	VRA-1		1-9-56
	VRA-2		

CK-32A

VERTICAL RECEIVING ANTENNA MODELS VRA



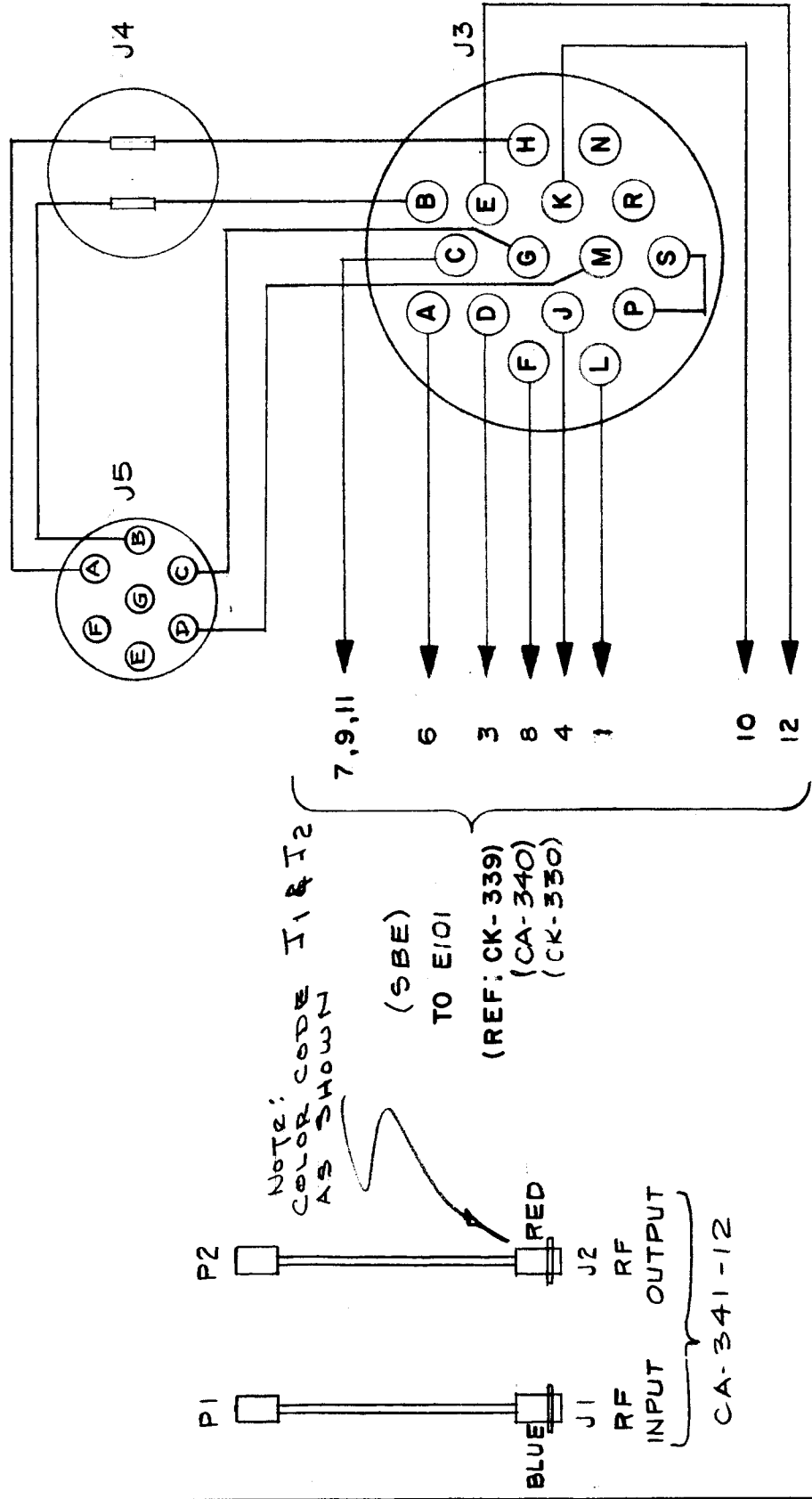
UG-58A/U

REQ. ITEM	PART NO.	DESCRIPTION	SYMBOL
		THE TECHNICAL MATERIEL CORP. MAMARONECK. NEW YORK	
		SCHEMATIC DIAGRAM	
		MODELS VRA	
		CD 1-9-56	
		DRAWN	CHECKED
		TYPE & TEMPER	HEAT TREAT. SPEC.
		FINISH & SPEC. NO.	ELEC. DES. APP. MECH. DES. APP.
ISSUE ITEM	CHANGED FROM	DATE	CH. NO. DRAFTS CHECKER ENG. APP.
TOLERANCES			
DEC. DIM. ±	MAXIMUM ALLOWABLE TOLERANCES HAVE BEEN DETERMINED AND ANY DEVIATIONS WILL BE CAUSE FOR REJECTION.		
FRAC. DIM. ±	REMOVE ALL BURRS AND SHARP EDGES		
ANGULAR DIM. ±			





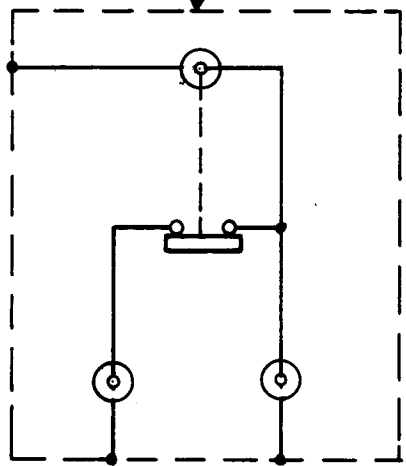
REQ. PER UNIT	MODEL	ASSY. NO.	DATE
	A-1279		



ISSUE ITEM	CHANGED FROM	DATE	CH. NO.	DRAFTS	CHECKER	ENG. APP.	REQ. ITEM	PART NO.	DESCRIPTION	SYMBOL
D 1	J5 & ASSOCIATED WIRING ADDED	3/4/58	4	16	ATT				THE TECHNICAL MATERIEL CORP. MAMARONECK, NEW YORK	
C 2	"D" PIN ADDED "L" PIN WAS "L" 2	9/5/57	3	SC.	WJP					
B 1	SYMBOL NO. S ADDED FOR COLOR CODE	7/24/57	2	84.	WJP				SCHEMATIC DIAGRAM SSB - EXCITER (A-1279)	
A 1	WIRING CHG'D. CA LES ADDED	5/27/57	1	16	WJP					
TOLERANCES										
SCALE:										
MAXIMUM ALLOWABLE TOLERANCES HAVE BEEN DETERMINED AND ANY DEVIATIONS WILL BE CAUSE FOR REJECTION. REMOVE ALL BURRS AND SHARP EDGES										
DEC. DIM. ±										
FRAC. DIM. ±										
ANGULAR DIM. ±										
							TYPE & TEMPER	HEAT TREAT. SPEC.	CHECKED	FINAL APPROVAL
							FINISH & SPEC. NO.			
							5/6/57		WJP	ATT
										CK-342

REQ. PER UNIT	USED ON	MODEL	DATE
1	ASSY. NO.	6-24-67	
1	SW-195	1-23-58	
	SW-196		

CK-344



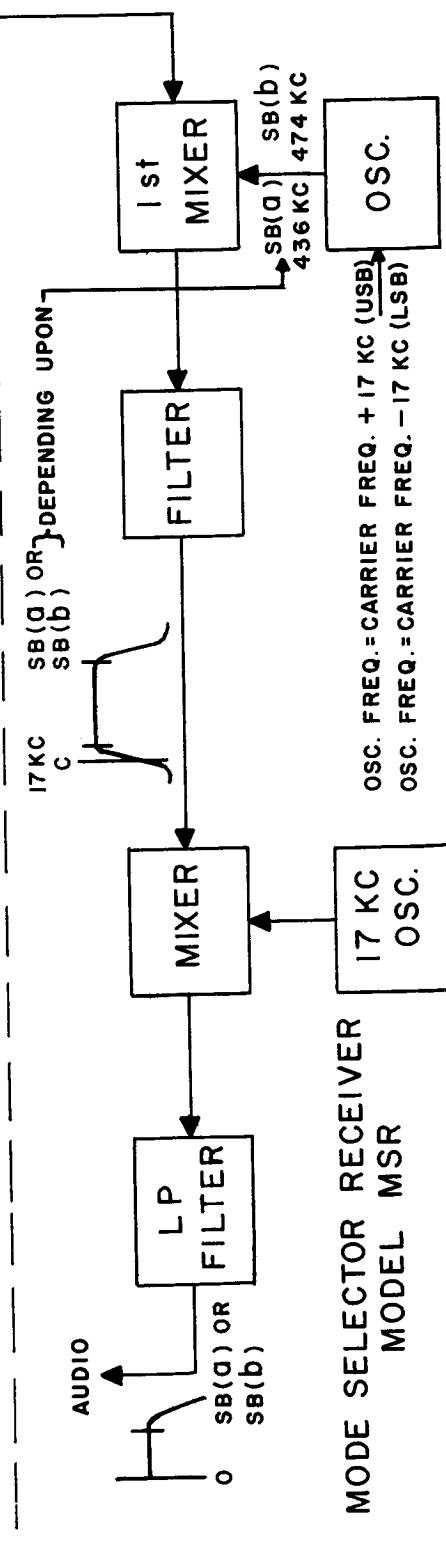
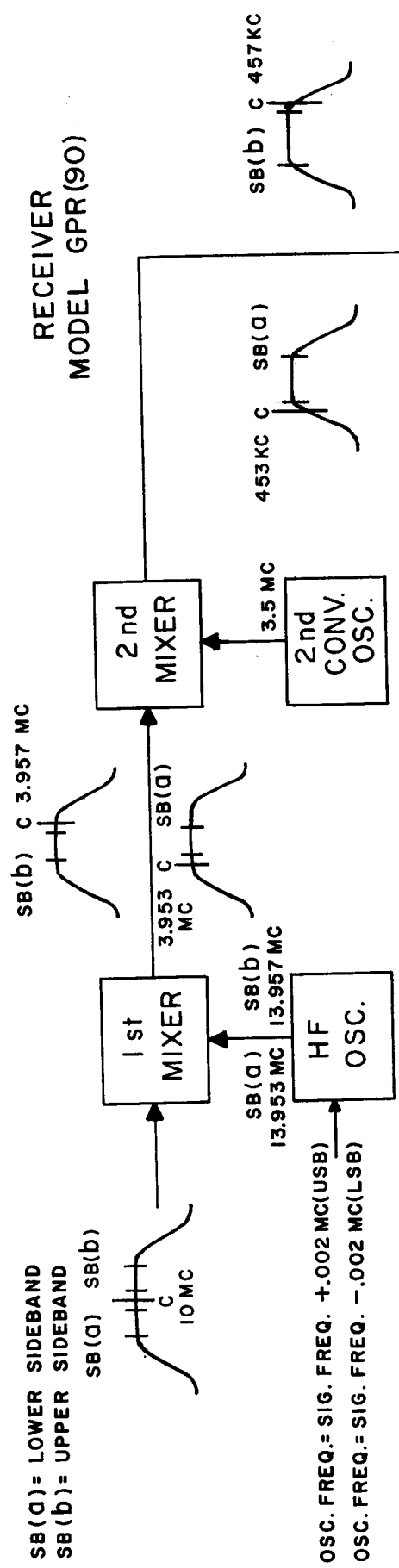
WHEN PLUG IS INSERTED HERE,  
SWITCH OPENS

REQ. ITEM	PART NO.	DESCRIPTION	SYMBOL
		THE TECHNICAL MATERIEL CORP. MAMARONECK, NEW YORK	
		SCHEMATIC DIAGRAM	
		SW-195, SW-196	
		DRAWN	APB
		CHECKED	APB
		MECH. DES. APP.	CK-344
		FINISH & SPEC. NO.	
		TYPE & TEMPER	
		HEAT TREAT. SPEC.	
		MATERIAL	
		STOCK SIZE	
		FINISH & SPEC. NO.	
		CHECKER	
		DRAFTS	
		CH. NO.	
		DATE	
		ENG. APP.	
		CHANGED FROM	
		TOLERANCES	
		DEC. DIM. ±	
		FRAC. DIM. ±	
		ANGULAR DIM. ±	
		SCALE:	
		MAXIMUM ALLOWABLE TOLERANCES HAVE BEEN DETERMINED AND ANY DEVIATIONS WILL BE CAUSE FOR REJECTION. REMOVE ALL BURRS AND SHARP EDGES	

CK-346 A

REQ. PER UNIT	MODEL	USED ON ASSY. NO.	DATE

EXAMPLE II — SHIFTED OPERATION WITH A DOUBLE CONVERSION RECEIVER



REQ. ITEM	PART NO.	DESCRIPTION	SYMBOL
		THE TECHNICAL MATERIEL CORP. MAMARONECK, NEW YORK	
		BLOCK DIAGRAM, EXAMPLE II	
		GPR-90 MSR (1), (4), (5)	
		16/18/57	A.J.J.
		DRAWN	FINAL APPROVAL
		CHECKED	
		TYPE & TEMPER	HEAT TREAT. SPEC.
		FINISH & SPEC. NO.	
			CK-346 A

SCALE:

TOLERANCES

MAXIMUM ALLOWABLE TOLERANCES HAVE BEEN DETERMINED AND ANY DEVIATIONS WILL BE CAUSE FOR REJECTION. REMOVE ALL BURRS AND SHARP EDGES

DEC. DIM. ±  
FRAC. DIM. ±  
ANGULAR DIM. ±

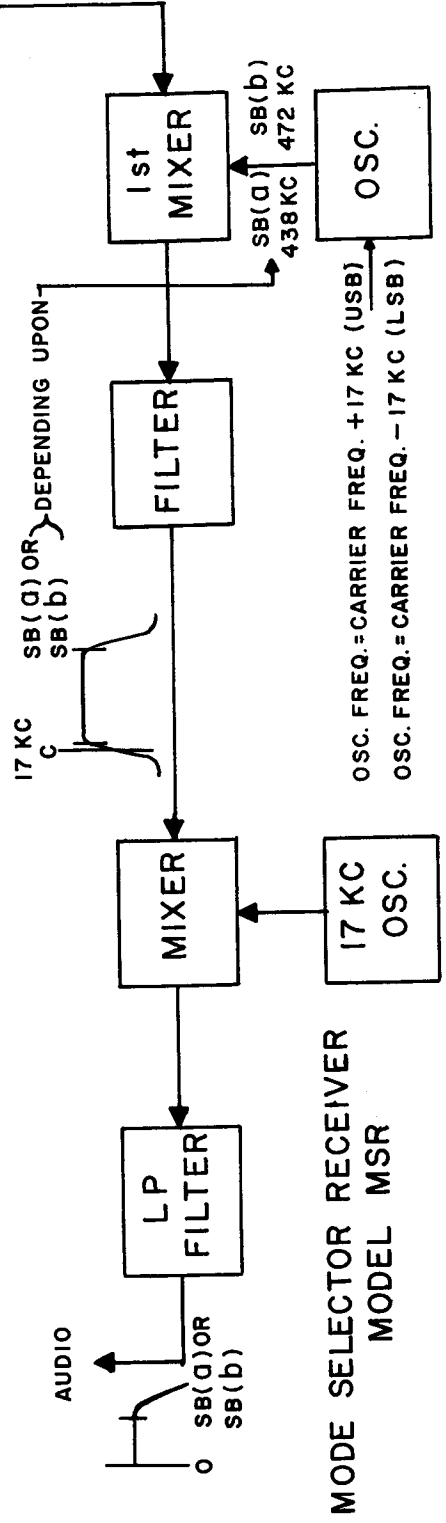
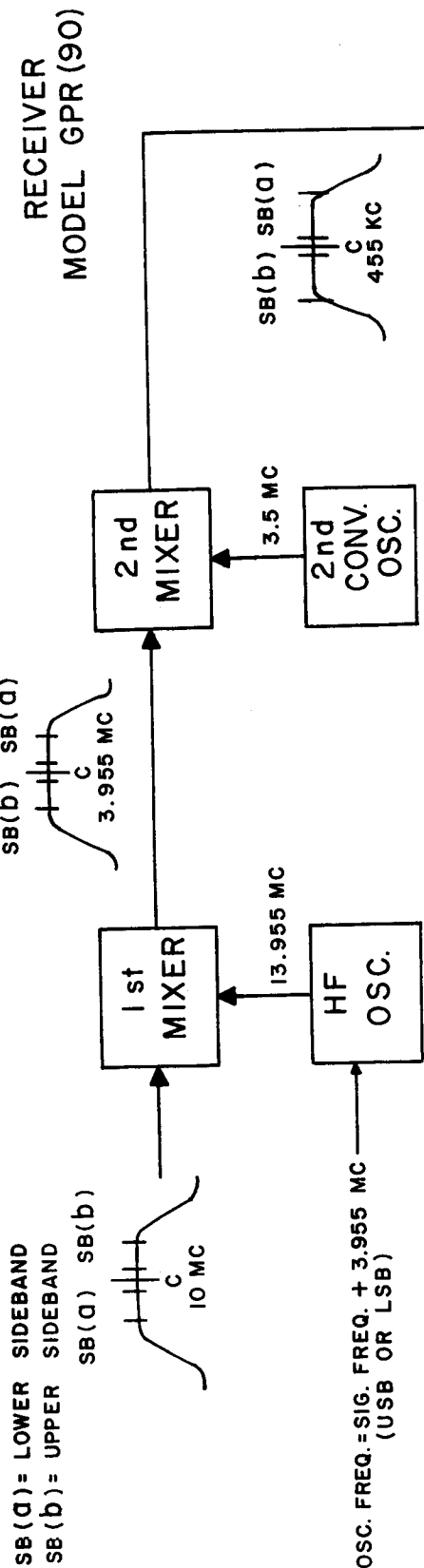
DATE 9/29/58  
CH. NO. 1  
DRAFTS CHECKER P.K. GR.  
ENG. APP.

ISSUE ITEM A 1  
CHANGED FROM EXAMPLE I

CK-347 A

REQ. PER UNIT	MODEL	USED ON ASS'Y. NO.	DATE

EXAMPLE I NORMAL CENTERED OPERATION WITH A DOUBLE CONVERSION RECEIVER



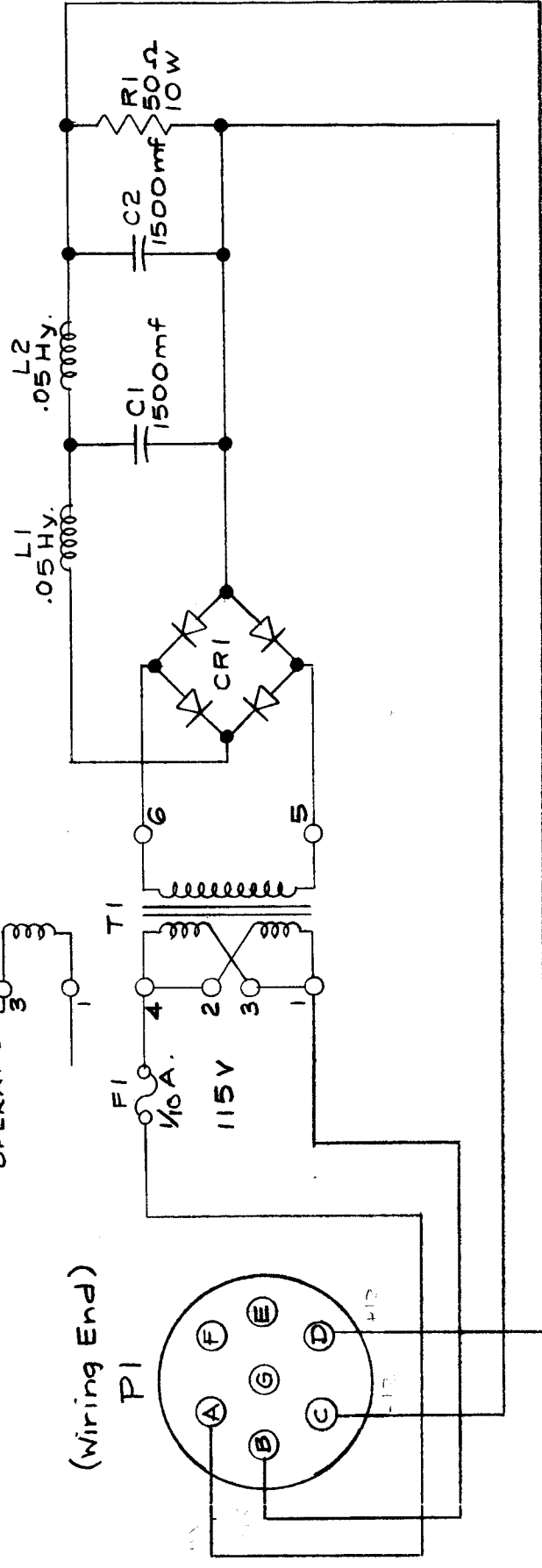
REQ. ITEM	CH. NO.	DATE	CHANGED FROM	CHECKER	ENG. APP.	TYPE & TEMPER	HEAT TREAT. SPEC.	FINISH & SPEC. NO.	
A 1		9/29/58	+	JOB P.L.K. JR					
TOLERANCES						SCALE:			
DEC. DIM. ±						MAXIMUM ALLOWABLE TOLERANCES HAVE BEEN DETERMINED AND ANY DEVIATIONS WILL BE CAUSE FOR REJECTION.			
FRAC. DIM. ±						REMOVE ALL BURRS AND SHARP EDGES			
ANGULAR DIM. ±									
DESCRIPTION						SYMBOL			
THE TECHNICAL MATERIEL CORP. MAMARONECK, NEW YORK									
BLOCK DIAGRAM, EXAMPLE I									
GPR-90 - MSR (1), (4), (5)									
16 10/18/57						DRAWN CHECKED			
A.J.J.						FINAL APPROVAL			
CK-347 A									

REQ. PER UNIT		USED ON	
1	A-1504	ASSY. NO.	DATE
		2-28-58	

CK-348

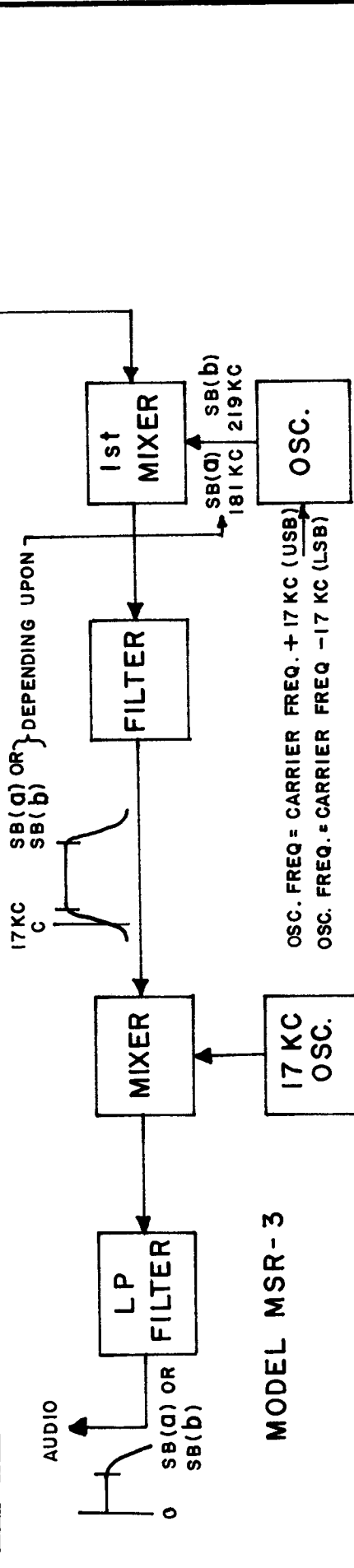
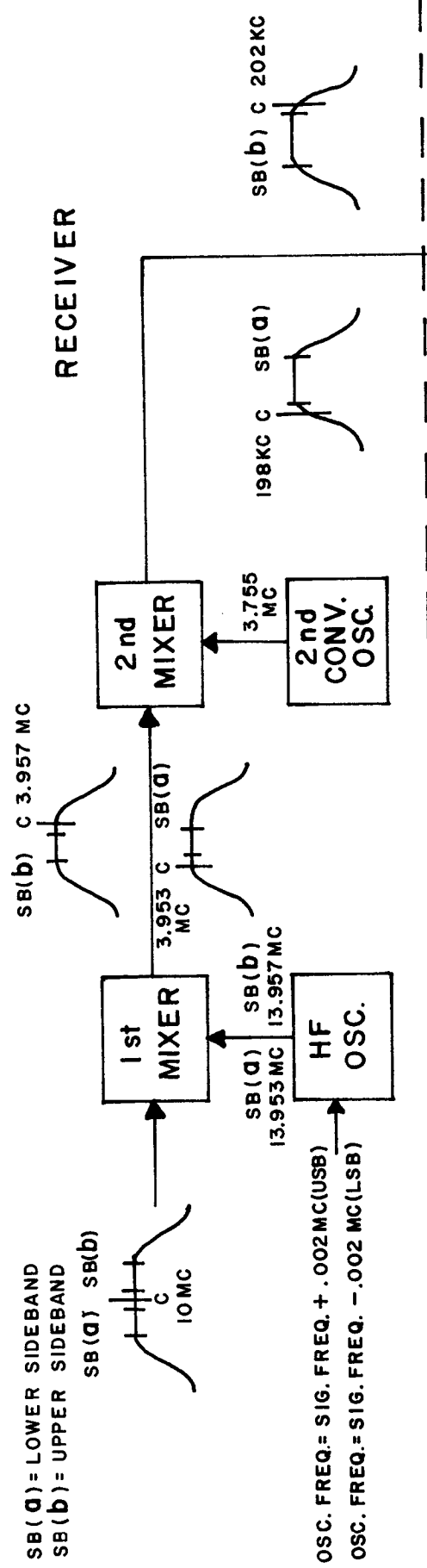
A

(Wiring End)



REQ. ITEM	PART NO.	DESCRIPTION	SYMBOL
		THE TECHNICAL MATERIEL CORP. MAMARONECK, NEW YORK	
		SCHEMATIC DIAGRAM (BATTERY SUPPLY, A-1504)	
A 1	L1 & L2	VALUE WAS 5HY	
TOLERANCES			
DEC. DIM. ±			
FRAC. DIM. ±			
ANGULAR DIM. ±			
ISSUE ITEM	CHANGED FROM	SCALE:	
		MAXIMUM ALLOWABLE TOLERANCES HAVE BEEN DETERMINED AND ANY DEVIATIONS WILL BE CAUSE FOR REJECTION. REMOVE ALL BURRS AND SHARP EDGES	
DATE	CH. NO.	DRAFTS	CHECKER
8-30-62	7154	SG	YDR
DATE	CH. NO.	ENG. APP.	
6/29/59			AWD
DRAWN	CHECKED	FINAL APPROVAL	
RPM	AWD	A.T.J.	
FINISH & SPEC. NO.		CK-348	
ELEC. DES. APP.		MECH. DES. APP.	

EXAMPLE I — SHIFTED OPERATION WITH A DOUBLE CONVERSION RECEIVER

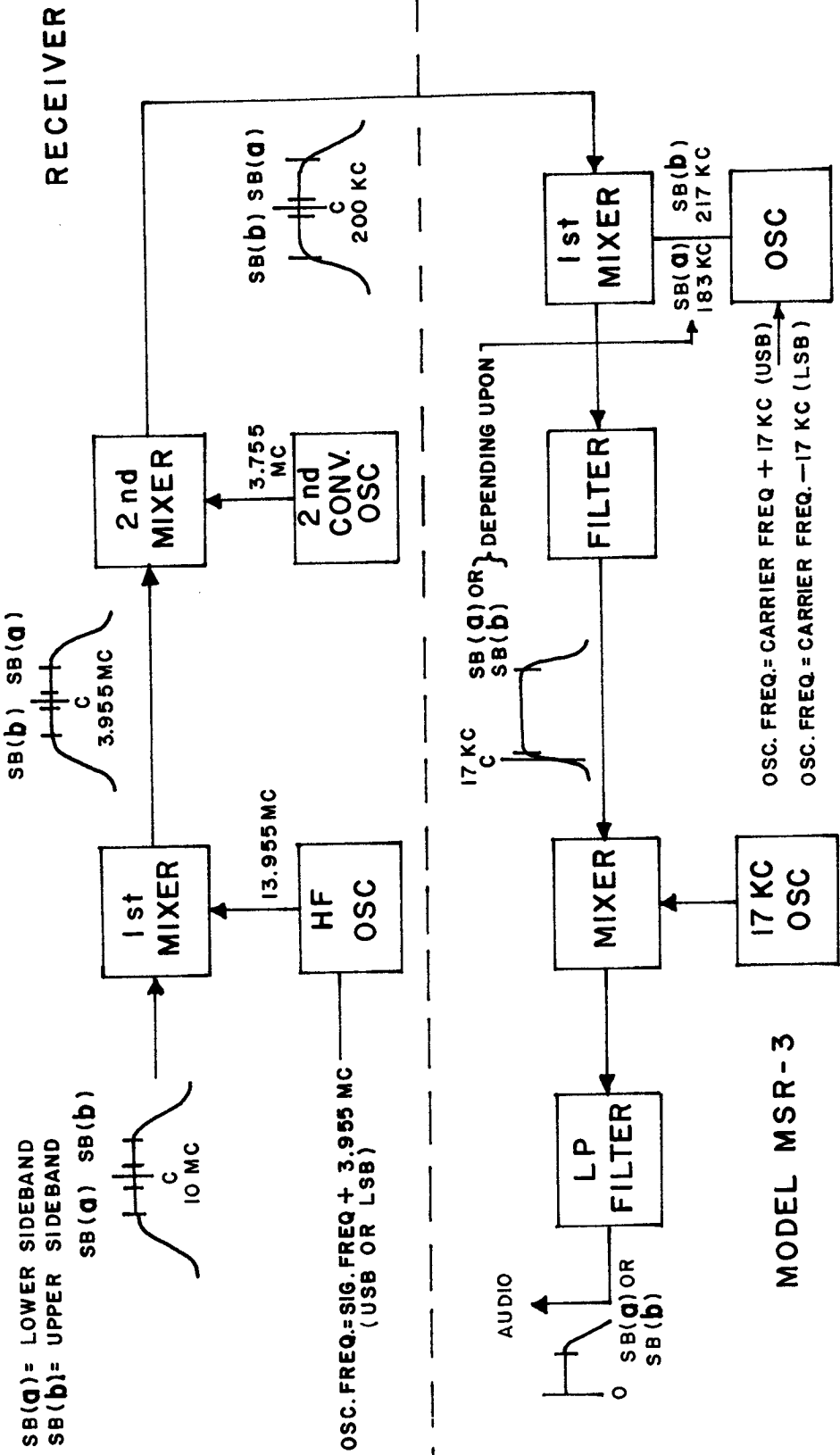


REQ. ITEM	PART NO.	DESCRIPTION	SYMBOL
		THE TECHNICAL MATERIEL CORP. MAMARONECK, NEW YORK	
		BLOCK DIAGRAM EXAMPLE I	
		MODEL MSR-3	
ISSUE ITEM	CHANGED FROM	DATE	CH. NO.
TOLERANCES			
SCALE:			
MAXIMUM ALLOWABLE TOLERANCES HAVE BEEN DETERMINED AND ANY DEVIATIONS WILL BE CAUSE FOR REJECTION. REMOVE ALL BURRS AND SHARP EDGES			
DEC. DIM. ±			
FRAC. DIM. ±			
ANGULAR DIM. ±			
	C. D. D.	DRAWN	CHECKED
			FINAL APPROVAL
			CK-350

CK - 351

USED ON  
REQ. PER UNIT  
MODEL  
MSR-3  
DATE

EXAMPLE II NORMAL CENTERED OPERATION WITH A DOUBLE CONVERSION RECEIVER



REQ. ITEM	PART NO.	DESCRIPTION	SYMBOL
		THE TECHNICAL MATERIEL CORP. MAMARONECK, NEW YORK	
		BLOCK DIAGRAM EXAMPLE II	
		MODEL MSR-3	
ISSUE ITEM	CHANGED FROM	C.D.D	FINAL APPROVAL
TOLERANCES		CHECKED	
SCALE:		DRAWN	
MAXIMUM ALLOWABLE TOLERANCES HAVE BEEN DETERMINED AND ANY DEVIATIONS WILL BE CAUSE FOR REJECTION. REMOVE ALL BURRS AND SHARP EDGES		MECH. DES. APP.	
DEC. DIM. ±			
FRAC. DIM. ±			
ANGULAR DIM. ±			
			CK-351

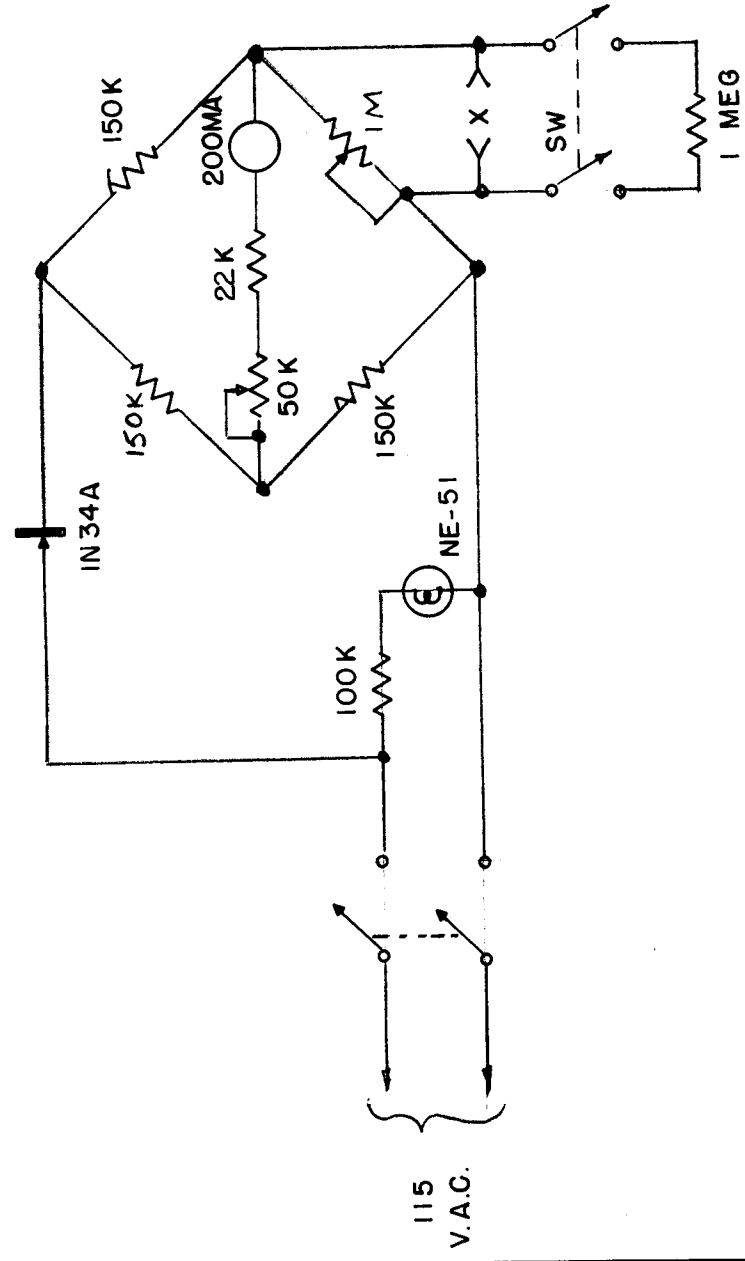


CK-360

USED ON  
ASSY. NO. DATE

REQ. PER UNIT MODEL

- To zero the bridge throw the SW. to connect the 1 Meg. resistor to the X terminals. Adjust the 1 Meg. pot to zero the 200 MA meter.
- To adjust the full scale range of the meter short the X terminals and adjust the 50K pot so that the meter reads full scale.



BRIDGE METER  
READING

0	1 Meg.
1	820 K
4	680 K
7	560 K
8	470 K
13	390 K
17	330 K
21	270 K
28	220 K
33	180 K
37	150 K
50	120 K
58	100 K
72	75 K
91	50 K
97	45 K
103	40 K
117	30 K
127	25 K
139	20 K
152	15 K
166	10 K
172	8 K
178	6 K
185	4 K
193	2 K
200	0

ELEMENT  
RESISTANCE  
(ohms)

REQ. ITEM	CHANGED FROM	DATE	CH. NO.	DRAFTS	CHECKER	ENG. APP.	REQ. ITEM	PART NO.	DESCRIPTION	SYMBOL	
							THE TECHNICAL MATERIEL CORP. MAMARONECK. NEW YORK TEST BRIDGE FOR RR-123				
							STOCK SIZE MATERIAL TYPE & TEMPER HEAT TREAT. SPEC. DRAWN CHECKED FINISH & SPEC. NO.				
							TOLERANCES SCALE: MAXIMUM ALLOWABLE TOLERANCES HAVE BEEN DETERMINED AND ANY DEVIATIONS WILL BE CAUSE FOR REJECTION. REMOVE ALL BURRS AND SHARP EDGES				
							FINAL APPROVAL ELEC. DES. APP. MECH. DES. APP.				

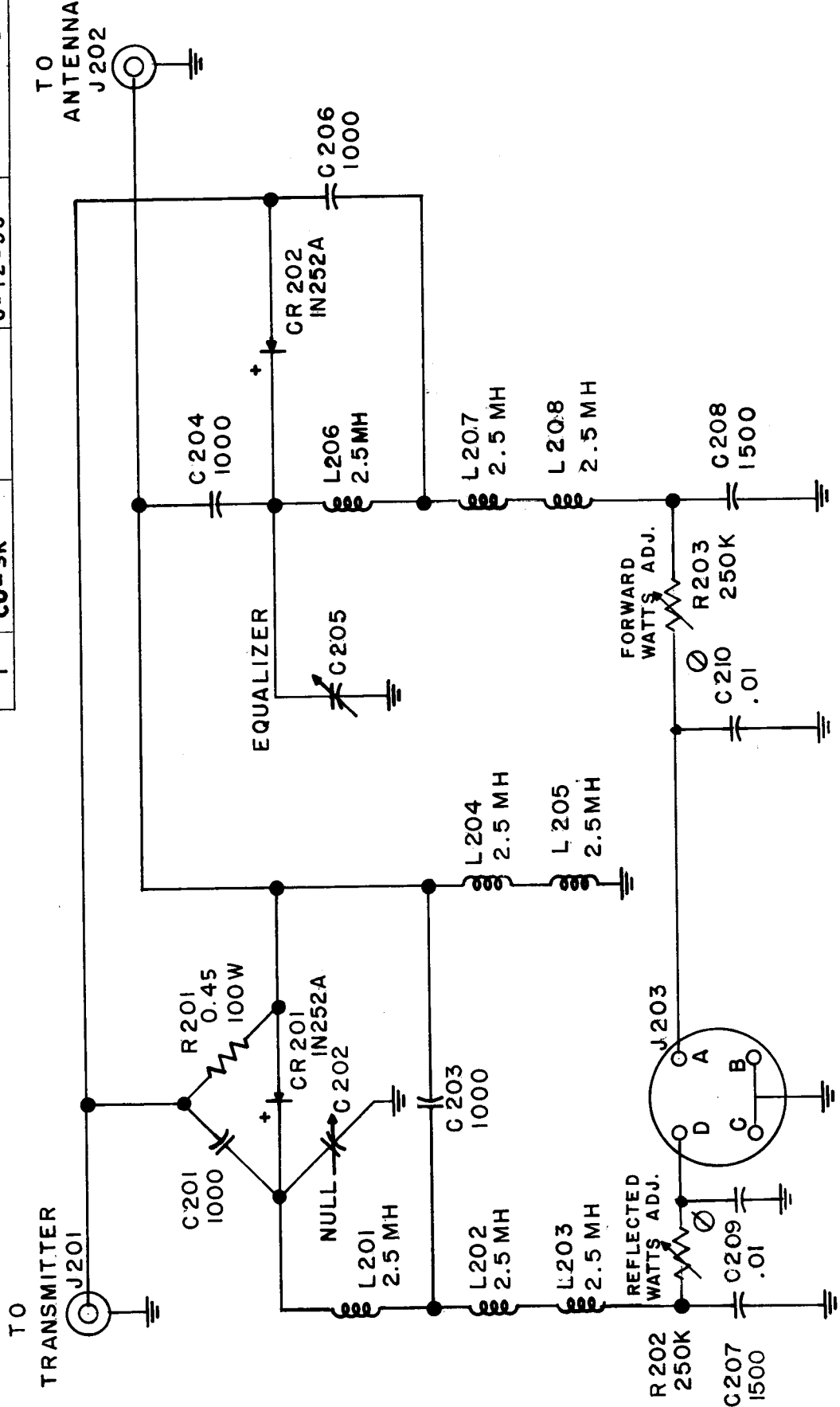
9/17/58

CK-360

F18 5-4

REQ. PER UNIT	1
MODEL	CU-3K
ASSY. NO.	
USED ON	
DATE	6-12-58

CK361 E



REQ. ITEM	PART NO.	DESCRIPTION	SYMBOL
		THE TECHNICAL MATERIEL CORP. MAMARONECK, NEW YORK	
		SCHEMATIC DIAGRAM	
		MODEL - CU-3K	
		6-12-58 JSE	
		DRAWN	FINAL APPROVAL
		CHECKED	JSE
		ELEC. DES. APP. MECH. DES. APP.	CK361 E
		FINISH & SPEC. NO.	
		HEAT TREAT. SPEC.	
		MATERIAL	
		STOCK SIZE	
		TYPE & TEMPER	

ISSUE ITEM

CHANGED FROM

DATE

CH. NO.

DRAFTS

CHECKER

ENG. APP.

SCALE:

MAXIMUM ALLOWABLE TOLERANCES HAVE BEEN DETERMINED AND ANY DEVIATIONS WILL BE CAUSE FOR REJECTION. REMOVE ALL BURRS AND SHARP EDGES

IN252A WAS IN-252

1-26-67

17729

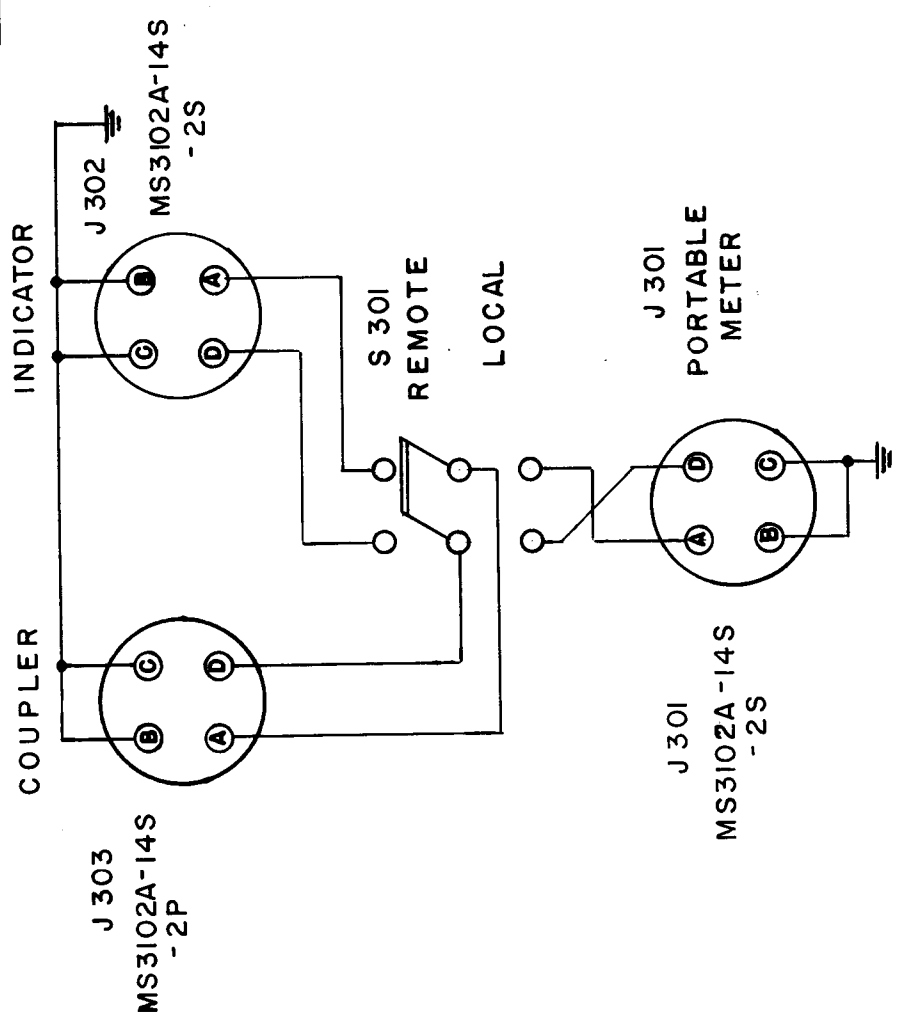
RME

JSE

FIG. 5-5

CK-363 B

REQ. PER UNIT	1	MODEL	JBIII	USED ON	DATE
ASSY. NO.					6-13-58



REQ. ITEM	PART NO.	DESCRIPTION	SYMBOL
	CP	THE TECHNICAL MATERIEL CORP. MAMARONECK. NEW YORK	
	CP	SCHEMATIC DIAGRAM	
	CP	MODEL JBIII	
	CP	DRAWN <i>asc</i>	<i>jsr</i>
	CP	CHECKED	
	CP	FINAL APPROVAL	
	CP	ELEC. DES. APP. MECH. DES. APP.	
	CP	FINISH & SPEC. NO.	CK-363 B

ISSUE ITEM	CHANGED FROM	DATE	CH. NO.	DRAFTS	CHECKER	ENG. APP.
B	CLERICAL CHANGE	1-13-64	4		<i>jsr</i>	
A	<i>J 301, 302, 303 P 149 functions clarified</i>	10/13/58	482		<i>jsr</i>	

SCALE:

TOLERANCES

DEC. DIM.  $\pm$

FRAC. DIM.  $\pm$

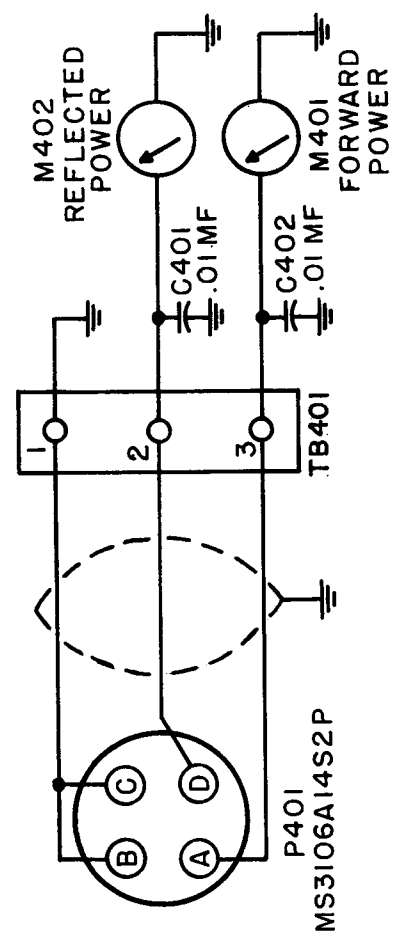
ANGULAR DIM.  $\pm$

MAXIMUM ALLOWABLE TOLERANCES HAVE BEEN DETERMINED AND ANY DEVIATIONS WILL BE CAUSE FOR REJECTION. REMOVE ALL BURRS AND SHARP EDGES

FIG 5-6

REQ. PER UNIT	USED ON	
	MODEL	DATE
1	SWR-3K-PM	6-17-58
	SWR-1K-PM	
	SWR-10K-PM	

CK-364		A
--------	--	---

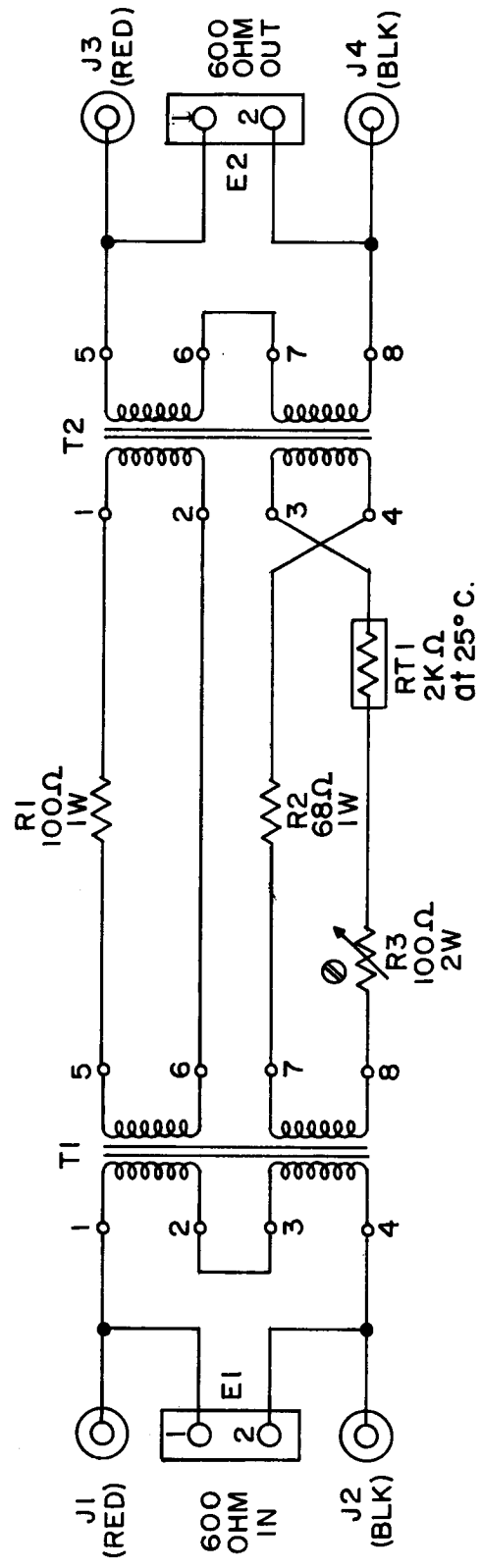


REQ. ITEM	CH. NO.	DATE	DRAFTS	CHECKER	ENG. APP.	REQ. ITEM	PART NO.	DESCRIPTION	SYMBOL
A	CLERICAL CHANGE	1-13-65	#	XL				THE TECHNICAL MATERIEL CORP. MAMARONECK. NEW YORK	
ISSUE ITEM CHANGED FROM						SCHEMATIC DIAGRAM, MODEL SWR-3K-PM (Portable Meter)			
TOLERANCES						MATERIAL			
DEC. DIM. ±						DRAWN			
FRAC. DIM. ±						CHECKED			
ANGULAR DIM. ±						ELEC. DES. APP. MECH. DES. APP.			
SCALE:						FINAL APPROVAL			
MAXIMUM ALLOWABLE TOLERANCES HAVE BEEN DETERMINED AND ANY DEVIATIONS WILL BE CAUSE FOR REJECTION. REMOVE ALL BURRS AND SHARP EDGES						16/17/58			
						RJA			
						CK-364			
						A			

REQ. PER UNIT	MODEL	USED ON
1	A-1532/PVC	ASSY. NO.
		DATE
		7-30-58

CK-367

A



5/3

REQ. ITEM	PART NO.	DESCRIPTION	SYMBOL
		THE TECHNICAL MATERIEL CORP. MAMARONECK. NEW YORK	
		SCHEMATIC DIAGRAM	
		A-1532 / PVC	
		167/39/58	
		DRAWN	FINAL APPROVAL
		CHECKED	
		ELEC. DES. APP.	
		MECH. DES. APP.	
		FINISH & SPEC. NO.	
		CK-367	A

ISSUE ITEM	CHANGED FROM	DATE	CH. NO.	DRAFTS	CHECKER	ENG. APP.
A 1	TITLE(A-1532 WAS A-1352)	3.25.64	1111	JTB		

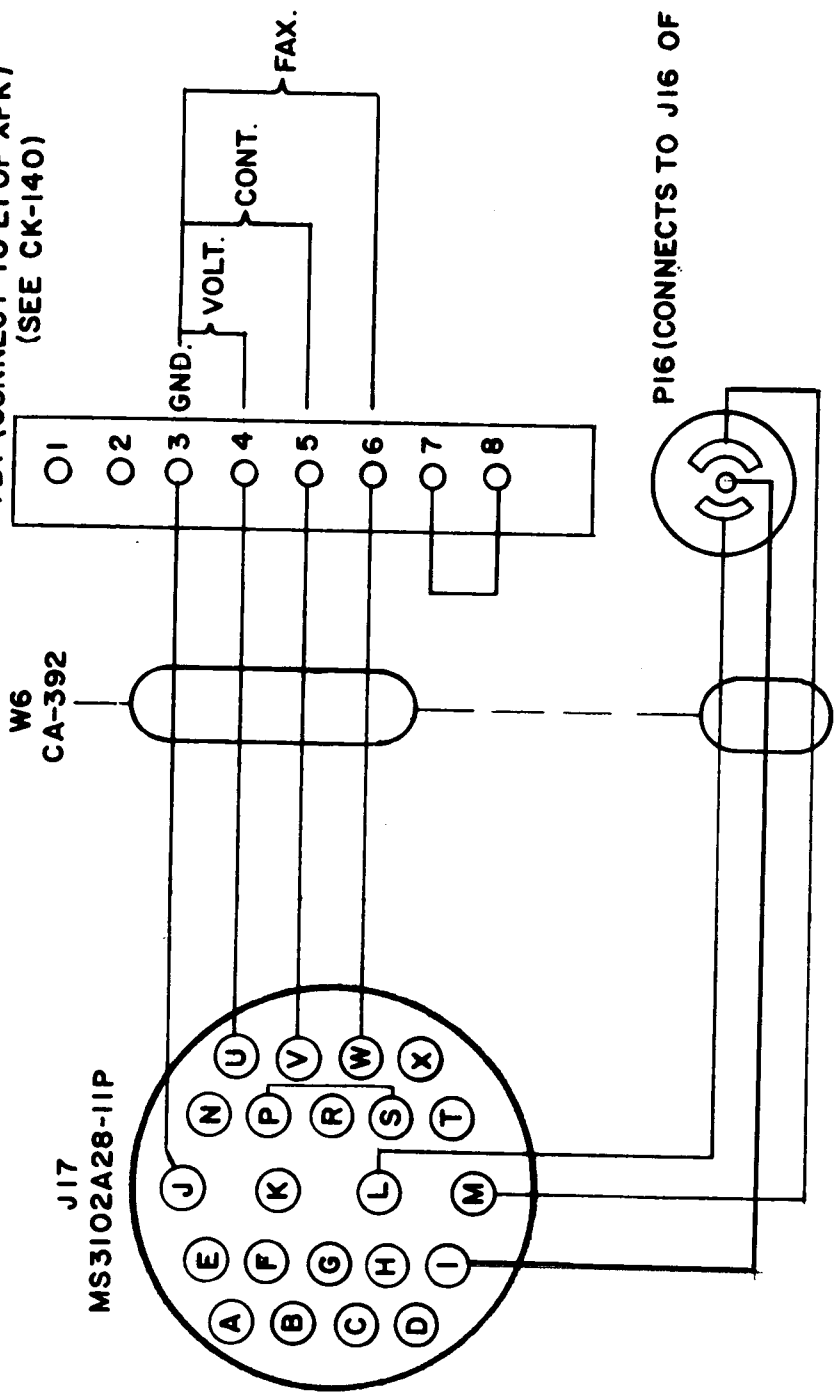
  

TOLERANCES		SCALE:
DEC. DIM. ±		
FRAC. DIM. ±		
ANGULAR DIM. ±		

MAXIMUM ALLOWABLE TOLERANCES HAVE BEEN DETERMINED AND ANY DEVIATIONS WILL BE CAUSE FOR REJECTION. REMOVE ALL BURRS AND SHARP EDGES

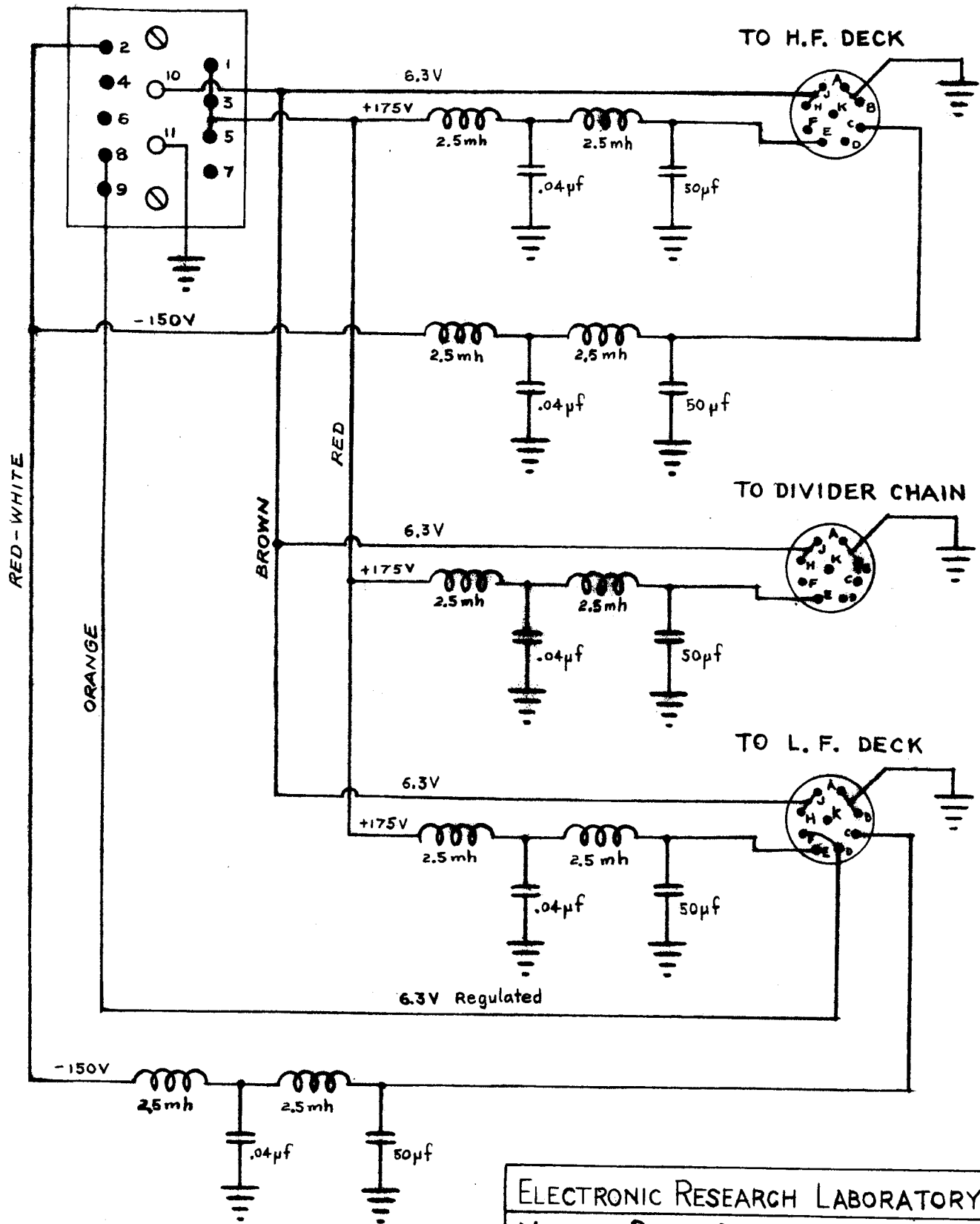
REQ. PART UNIT	1	MODEL	RTX-2	USED ON	CK-369
ASST. NO.		DATE	10-1-58		C

TBI (CONNECT TO E1 OF XFK)  
(SEE CK-140)



REF-CK-140 (XFK SCHEMATIC)

REQ. ITEM	CH. NO.	DATE	DATE	CH. NO.	CHECKER	ENG. APP.	PART NO.	DESCRIPTION	SYMBOL
C	18954	6.6.68			WJ			THE TECHNICAL MATERIEL CORP. MAMARONECK, NEW YORK	
B	763	2/3/69			J.C.B.			SCHMATIC DIAGRAM, PANEL	
A	500	10/23/68			J.C.B.			CHASSIS ASS'Y., MODEL RTX-2	
ISSUE ITEM	CHANGED FROM	TOLERANCES		SCALE:		TYPE & TEMPER		CHECKED	FINAL APPR VAL
		MAXIMUM ALLOWABLE TOLERANCES HAVE BEEN DETERMINED AND ANY DEVIATIONS WILL BE CAUSE FOR REJECTION. REMOVE ALL BURRS AND SHARP EDGES				DRAWN			
DEC. DIM. ±						HEATTREAT. SPEC.			
FRAC. DIM. ±						MATERIAL			
ANGULAR DIM. ±						FINISH & SPEC. NO.			
						ELEC. DES. APP. MECH. DES. APP.			

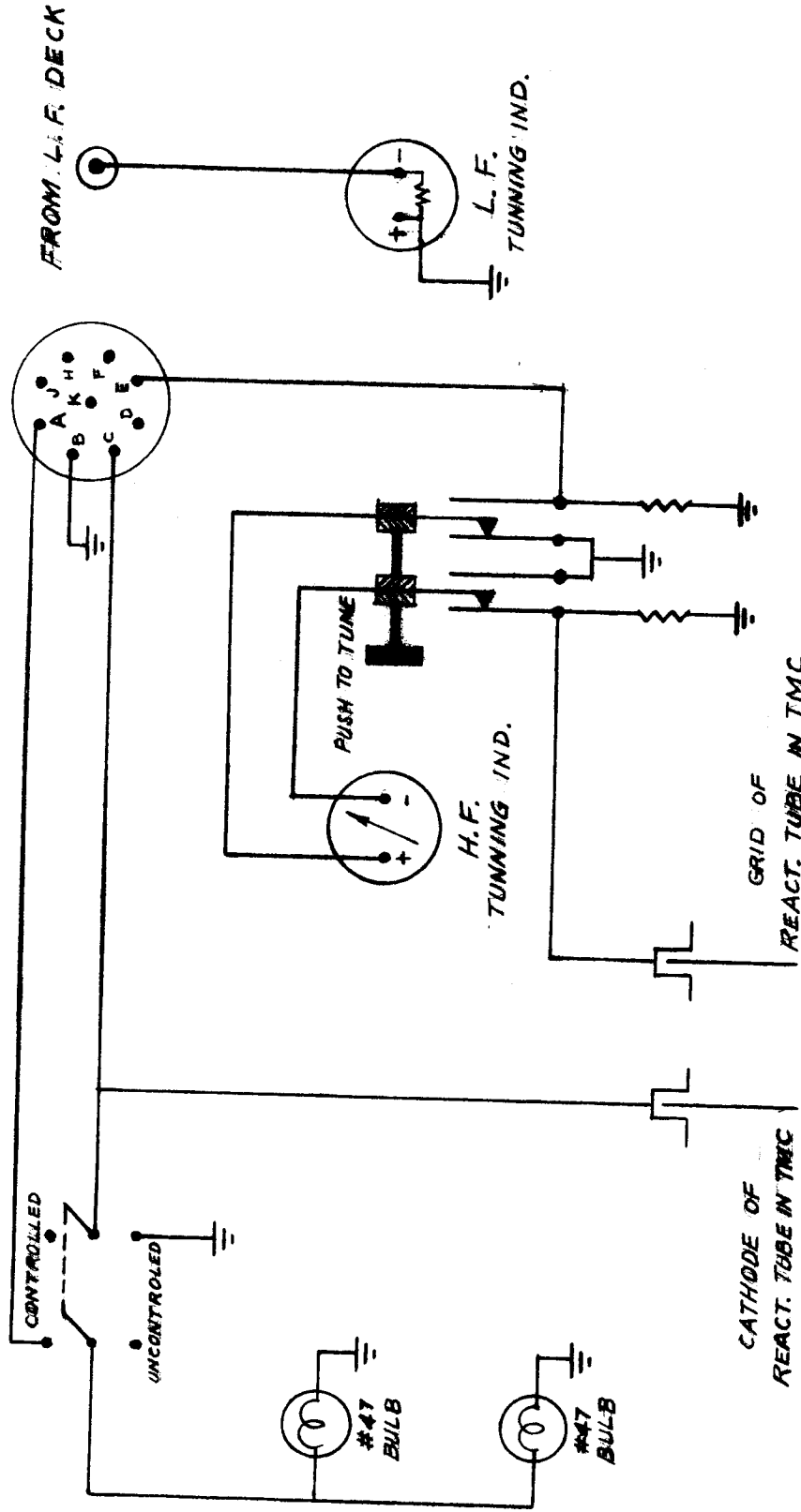


ELECTRONIC RESEARCH LABORATORY	
MONTANA STATE COLLGE, BOZEMAN, MONT.	
TITLE: LINE FILTER	
DESIGNED BY: W.E. Beadle.	DATE: -5-1958
DRAWN BY: George Chang.	DATE: 9-5-1958

TMC # CK-388

CK-388

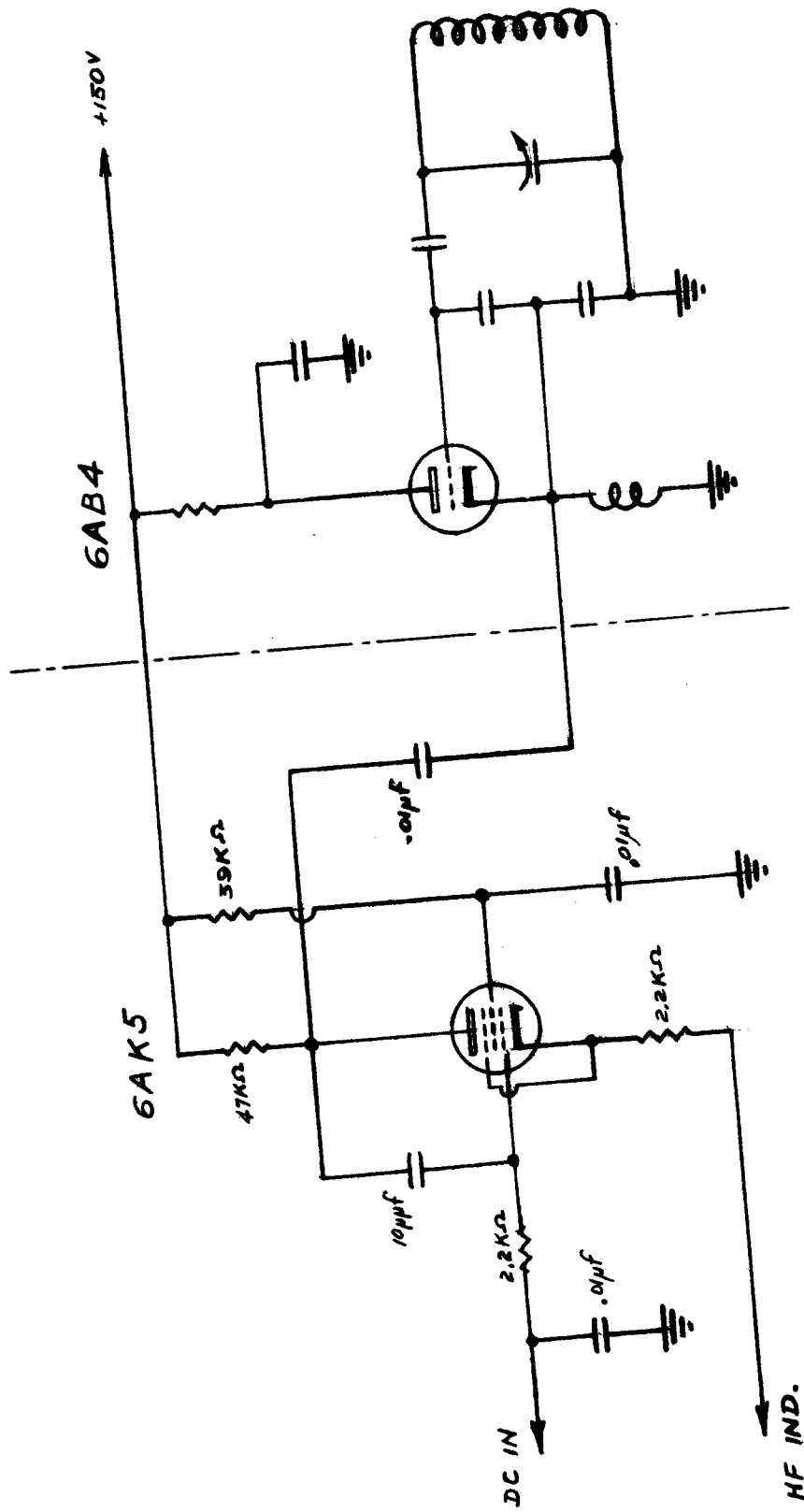
CK-389



ELECTRONIC RESEARCH LABORATORY  
 MONTANA STATE COLLEGE, BOZEMAN, MONT.  
 TITLE: METER PANNEL  
 DESIGNED BY: W.E. Beadle DATE: 9-23-1958  
 DRAWN BY: GEORGE CHENG DATE: 9-24-1958

TMC # CK-389





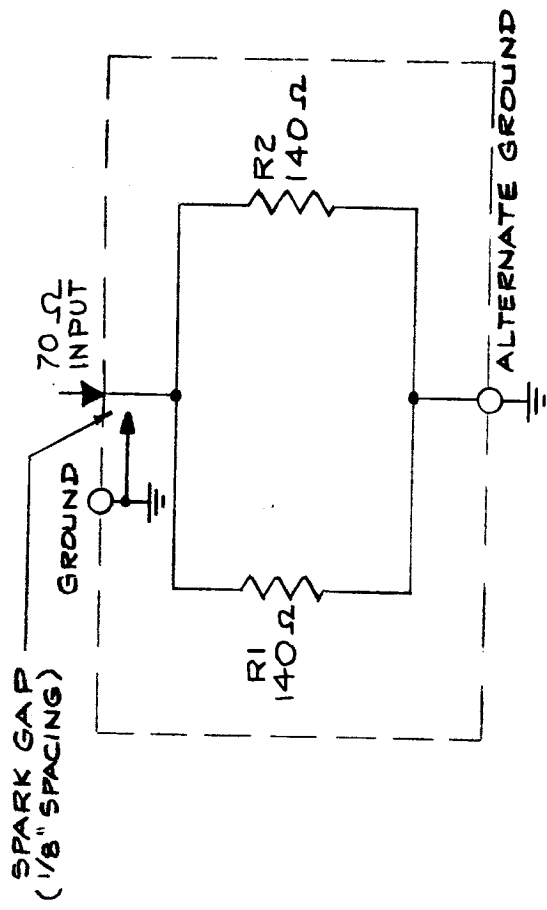
- NOTE: 1. Added 6AK5.  
 2. Replaced 6C4 (V301) with 6AB4 requiring pins 1 & 5 to be connected together

TMC # CK-390

ELECTRONIC RESEARCH LABORATORY	
MONTANA STATE COLLEGE, BOZEMAN, MONT.	
TITLE: MODIFICATION OF PMO	DATE: 11-1-1958
DESIGNED BY: B.D. Pritchard	DATE: 11-19-1958
DRAWN BY: George Cheng	

CK-392 A

REQ. PER. UNIT	1
MODEL	TER-5000-76
USED ON ASSY. N.	
DATE	2-6-59



REQ. ITEM		PART NO.		DESCRIPTION		SYMBOL	
				THE TECHNICAL MATERIEL CORP.			
				MAMARONECK, NEW YORK			
A 2		0-1-61 5386		SCHEMATIC DIAGRAM, TER-5000-70			
ISSUE ITEM		DATE		DRAWN		CHECKED	
1		0-1-61		S.G.		J.R.	
CHANGED FROM		DRAFTS		MATERIAL		ELEC. DES. APP.	
TOLERANCES		CHECKER		FINISH & SPEC. NO.		MECH. DES. APP.	
DEC. DIM. ±		G.D.L. <i>[Signature]</i>		16 <sup>3</sup> / <sub>16</sub> /59		CK-392 A	
FRAC. DIM. ±		G.D.L. <i>[Signature]</i>		HEAT TREAT. SPEC.		FINAL APPROVAL	
ANGULAR DIM. ±		G.D.L. <i>[Signature]</i>		TYPE & TEMPER		CK-392 A	
<p>SCALE:</p> <p>MAXIMUM ALLOWABLE TOLERANCES HAVE BEEN DETERMINED AND ANY DEVIATIONS WILL BE CAUSE FOR REJECTION. REMOVE ALL BURRS AND SHARP EDGES</p>							