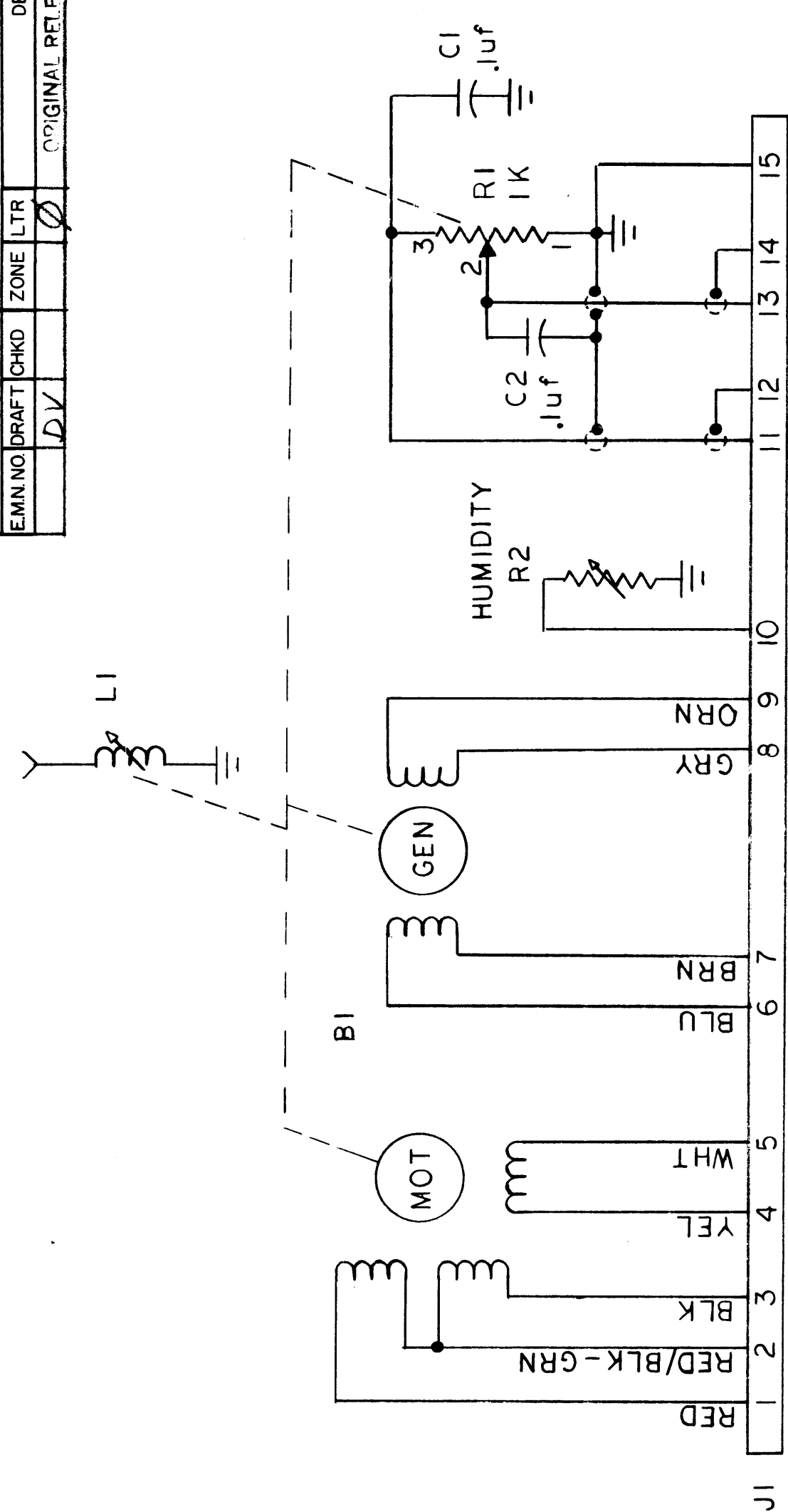


E.M.N. NO.		DRAFT CHKD		ZONE		LTR		REVISIONS		DATE		APPROVED	
DV						0		ORIGINAL RELEASE FOR PRODUCTION		11/30/73			



PARTIAL REFERENCE DESIGNATIONS
ARE SHOWN. PREFIX WITH THE
SUB-ASSEMBLY DESIGNATION.

REQ'D	ITEM	PART NUMBER	DESCRIPTION	SYM.	
LIST OF MATERIAL					
THE TECHNICAL MATERIEL CORP. MAMARONECK, NEW YORK					
DIAGRAM, SCHEMATIC					
COIL ASSEMBLY AX 5178					
SIZE	CODE IDENT. NO.	DWG. NO.	ISSUE	SHEET	OF
B	82679	CK2036	0	1	1
SCALE					

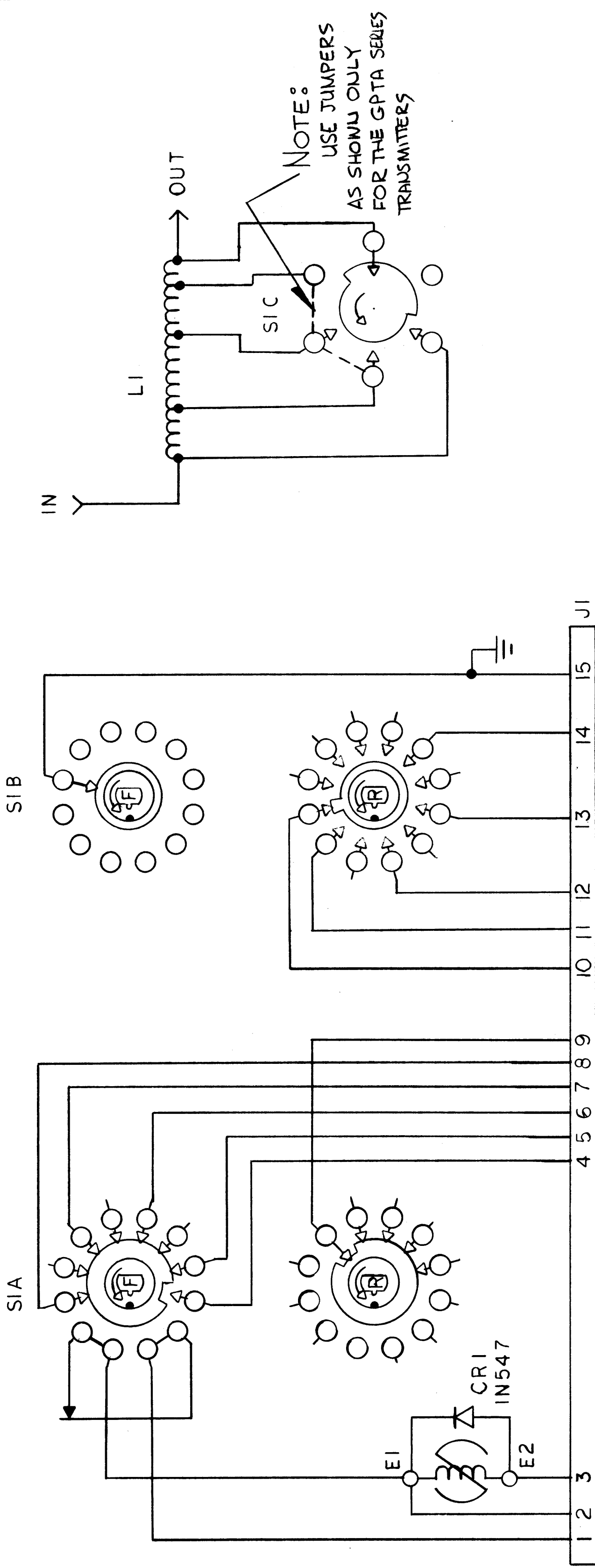
UNLESS OTHERWISE SPECIFIED DIMENSIONS ARE IN INCHES AND INCLUDE CHEMICALLY APPLIED OR PLATED FINISHES	FINAL APPROVAL <i>[Signature]</i>	DATE 11/3/73
DECIMALS X ± .05	ELECT. DES.	DATE
.XX ± .01	CHECKED	DATE
.XXX ± .005	DRAWN	DATE
FRACTIONS 1/64		DATE
TOLS. ANGLES ° .30'		DATE
MATERIAL		DATE
FINISH		DATE

QTY / UNIT	MODEL USED ON	ASSY. NO.
	AX 5176	AX 5178
APPLICATION		
CODE		

NOTICE TO PERSONS RECEIVING THIS DRAWING
THE TECHNICAL MATERIEL CORPORATION claims proprietary right in the material
disclosed hereon. This drawing is issued in confidence for engineering information only
and may not be reproduced or used to manufacture anything shown hereon without
permission from THE TECHNICAL MATERIEL CORPORATION to the user. This drawing is
loaned for mutual assistance and is subject to recall at any time.

5 4 3 2 1

REVISIONS				DATE	APPROVED
EM.N.O.	DRAFT	CHKD	ZONE	LTR	DESCRIPTION
					ORIGINAL RELEASE FOR PRODUCTION
21417				A	JUMPER NOTE ADDED
					11/30/73
					10-3-76
					K.P.



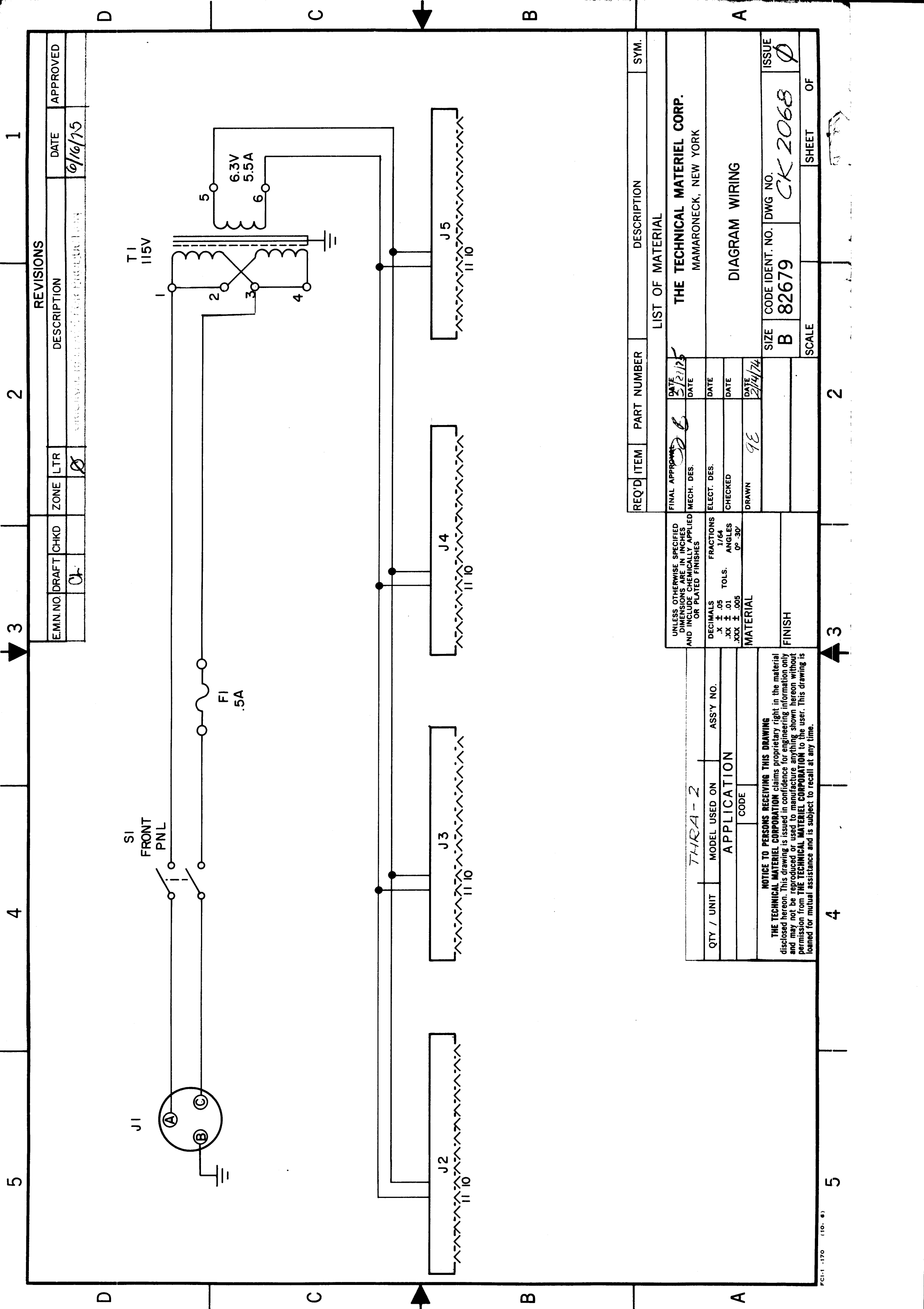
REQ'D ITEM	PART NUMBER	DESCRIPTION	SYM.
LIST OF MATERIAL			
FINAL APPROVAL	DATE	THE TECHNICAL MATERIEL CORP.	
MECH. DES.	DATE	MAMARONECK, NEW YORK	
ELECT. DES.	DATE		
CHECKED	DATE	DIAGRAM, SCHEMATIC	
DRAWN	DATE	BANDSWITCH ASSEMBLY AX5177	ISSUE
		SIZE B	CK2037 A
		CODE IDENT. NO. DWG NO.	
		SCALE	SHEET OF

UNLESS OTHERWISE SPECIFIED DIMENSIONS ARE IN INCHES AND INCLUDE CHEMICALLY APPLIED OR PLATED FINISHES	FRACTIONS 1/64	TOLS. ANGLES	
DECIMALS .X ± .05 .XX ± .01 .XXX ± .005			
MATERIAL			
FINISH			
QTY / UNIT	MODEL USED ON	ASS'Y NO.	
	AX5176	AX5177	
APPLICATION			
CODE			

SWITCH VIEWED FROM SOLENOID END.
PARTIAL REFERENCE DESIGNATIONS ARE SHOWN. PREFIX WITH THE SUB-ASSEMBLY DESIGNATION.

NOTICE TO PERSONS RECEIVING THIS DRAWING
THE TECHNICAL MATERIEL CORPORATION claims proprietary right in the material disclosed hereon. This drawing is issued in confidence for engineering information only and may not be reproduced or used to manufacture anything shown hereon without permission from THE TECHNICAL MATERIEL CORPORATION to the user. This drawing is loaned for mutual assistance and is subject to recall at any time.

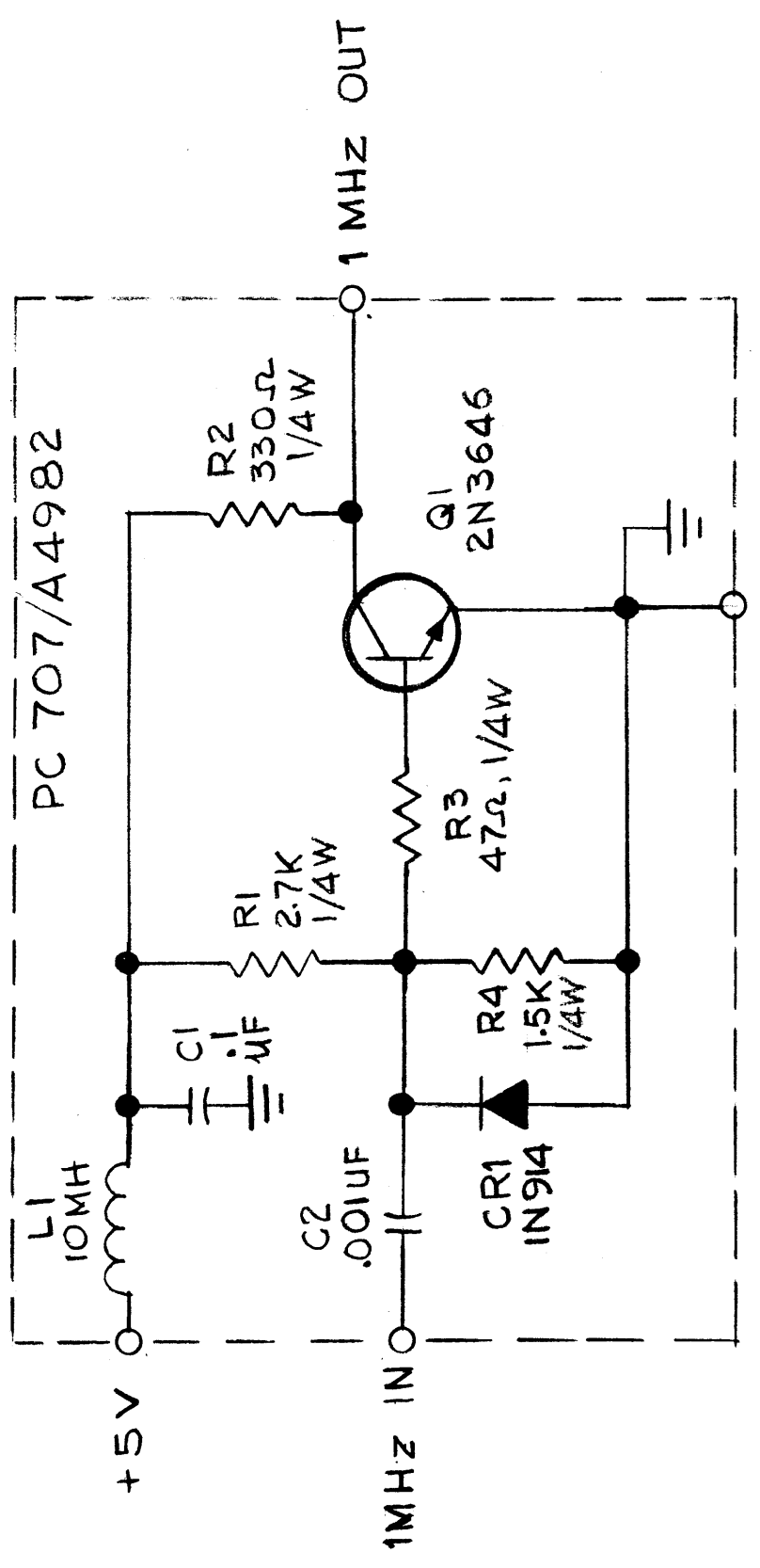
5 4 3 2 1



REVISIONS			
EM.N. NO.	DRAFT CHKD	ZONE	LTR
	CL		Ø
DESCRIPTION	DATE	APPROVED	
ORIGINAL DRAWING FOR PRODUCTION	6/16/75		

REQ'D	ITEM	PART NUMBER	DESCRIPTION	SYM.
LIST OF MATERIAL				
THE TECHNICAL MATERIEL CORP. MAMARONECK, NEW YORK				
DIAGRAM WIRING				
FINAL APPROVED	DATE	DATE	DATE	DATE
<i>DL</i>	5/21/75			
MECH. DES.	ELECT. DES.	CHECKED	DRAWN	
			9E	
UNLESS OTHERWISE SPECIFIED DIMENSIONS ARE IN INCHES AND INCLUDE CHEMICALLY APPLIED OR PLATED FINISHES		FRACTIONS 1/64		ISSUE
DECIMALS X ± .05		TOLS. .XX ± .01		SIZE
.XXX ± .005		ANGLES 0°-30°		CODE IDENT. NO.
MATERIAL		FINISH		82679
QTY / UNIT		MODEL USED ON		CK 2068
		APPLICATION		DWG NO.
		CODE		SCALE
		ASSY NO.		SHEET
				OF
				2

NOTICE TO PERSONS RECEIVING THIS DRAWING
 THE TECHNICAL MATERIEL CORPORATION claims proprietary right in the material disclosed hereon. This drawing is issued in confidence for engineering information only and may not be reproduced or used to manufacture anything shown hereon without permission from THE TECHNICAL MATERIEL CORPORATION to the user. This drawing is loaned for mutual assistance and is subject to recall at any time.



EM.N. NO.	DRAFT	CHKD	ZONE	LTR	DATE	APPROVED
-----------	-------	------	------	-----	------	----------

REVISIONS	DESCRIPTION
-----------	-------------

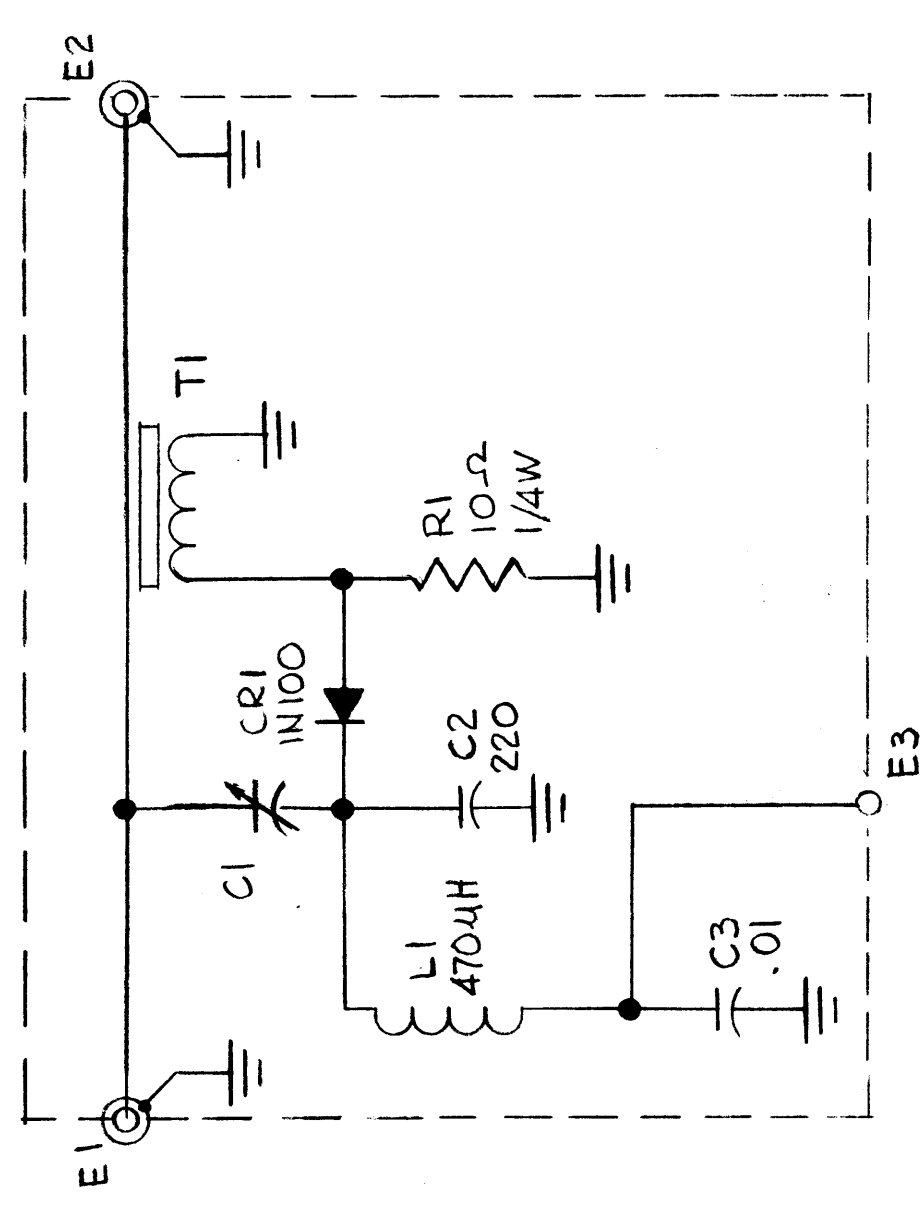
UNLESS OTHERWISE SPECIFIED DIMENSIONS ARE IN INCHES AND INCLUDE CHEMICALLY APPLIED OR PLATED FINISHES		DECIMALS .X ± .05 .XX ± .01 .XXX ± .005	FRACTIONS 1/64	TOLS. ANGLES 0°-30'	MATERIAL	FINISH
---	--	--	-------------------	---------------------------	----------	--------

QTY / UNIT	MODEL USED ON	ASSY NO.
	BMA515	A4982
APPLICATION		
CODE		
<p>NOTICE TO PERSONS RECEIVING THIS DRAWING THE TECHNICAL MATERIEL CORPORATION claims proprietary right in the material disclosed hereon. This drawing is issued in confidence for engineering information only and may not be reproduced or used to manufacture anything shown hereon without permission from THE TECHNICAL MATERIEL CORPORATION to the user. This drawing is loaned for mutual assistance and is subject to recall at any time.</p>		

REQ'D ITEM	PART NUMBER	DESCRIPTION	SYM.
------------	-------------	-------------	------

LIST OF MATERIAL	
THE TECHNICAL MATERIEL CORP. MAMARONECK, NEW YORK	
DIAGRAM SCHEMATIC 1 MHZ SWITCHING	
SIZE	CODE IDENT. NO. DWG NO.
B	82679 CK 2069
SCALE	SHEET OF
	1

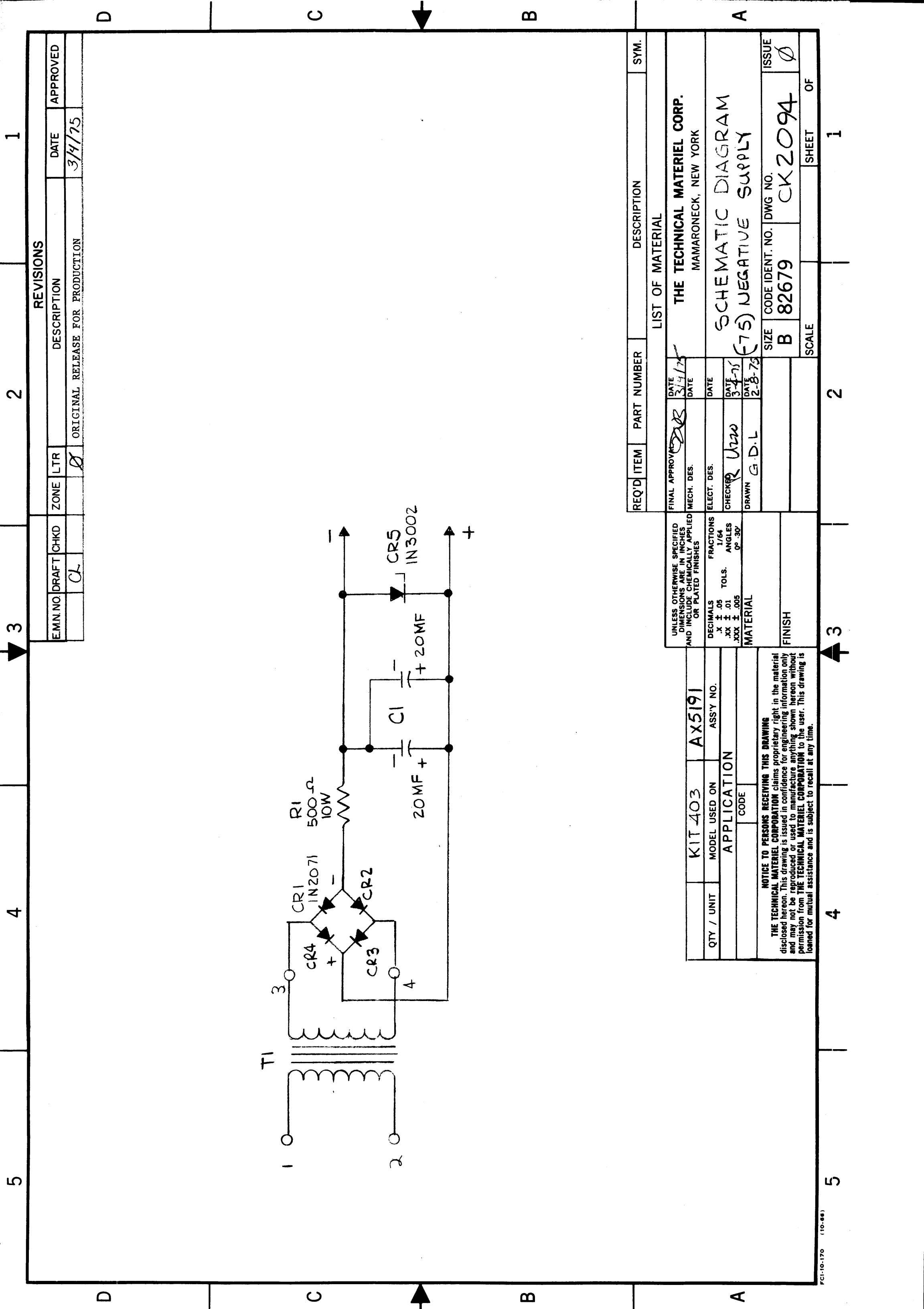
E.M.N. NO.		DRAFT		CHKD		ZONE		LTR		DESCRIPTION		DATE		APPROVED	
											EXP. RELEASE				
											ORIGINAL RELEASE FOR PRODUCTION		3/3-75		



REQ'D	ITEM	PART NUMBER	DESCRIPTION	SYM.
LIST OF MATERIAL				
			THE TECHNICAL MATERIEL CORP.	
			MAMARONECK, NEW YORK	
			DIAGRAM SCHEMATIC	
			D.C. COUPLER	
			SIZE B	
			CODE IDENT. NO. 82679	
			DWG NO. CK2085	
			ISSUE 0	
			SCALE	
			SHEET 1	
			OF 1	

UNLESS OTHERWISE SPECIFIED DIMENSIONS ARE IN INCHES AND INCLUDE CHEMICALLY APPLIED OR PLATED FINISHES		FINAL APPROVAL	
DECIMALS	FRACTIONS	MECH. DES.	DATE
.X ± .05	1/64	F. IANNUZZI	2-7-75
.XX ± .01	ANGLES	ELECT. DES.	DATE
.XXX ± .005	90° .30'	CHECKED	DATE
		F. IANNUZZI	12-14-74
		DRAWN	DATE
		G. DE LUCIA	1-5-74
MATERIAL		FINISH	

QTY / UNIT	MODEL USED ON	ASSY NO.
1	A5611	
APPLICATION		
CODE		
<p>NOTICE TO PERSONS RECEIVING THIS DRAWING</p> <p>THE TECHNICAL MATERIEL CORPORATION claims proprietary right in the material disclosed hereon. This drawing is issued in confidence for engineering information only and may not be reproduced or used to manufacture anything shown hereon without permission from THE TECHNICAL MATERIEL CORPORATION to the user. This drawing is loaned for mutual assistance and is subject to recall at any time.</p>		

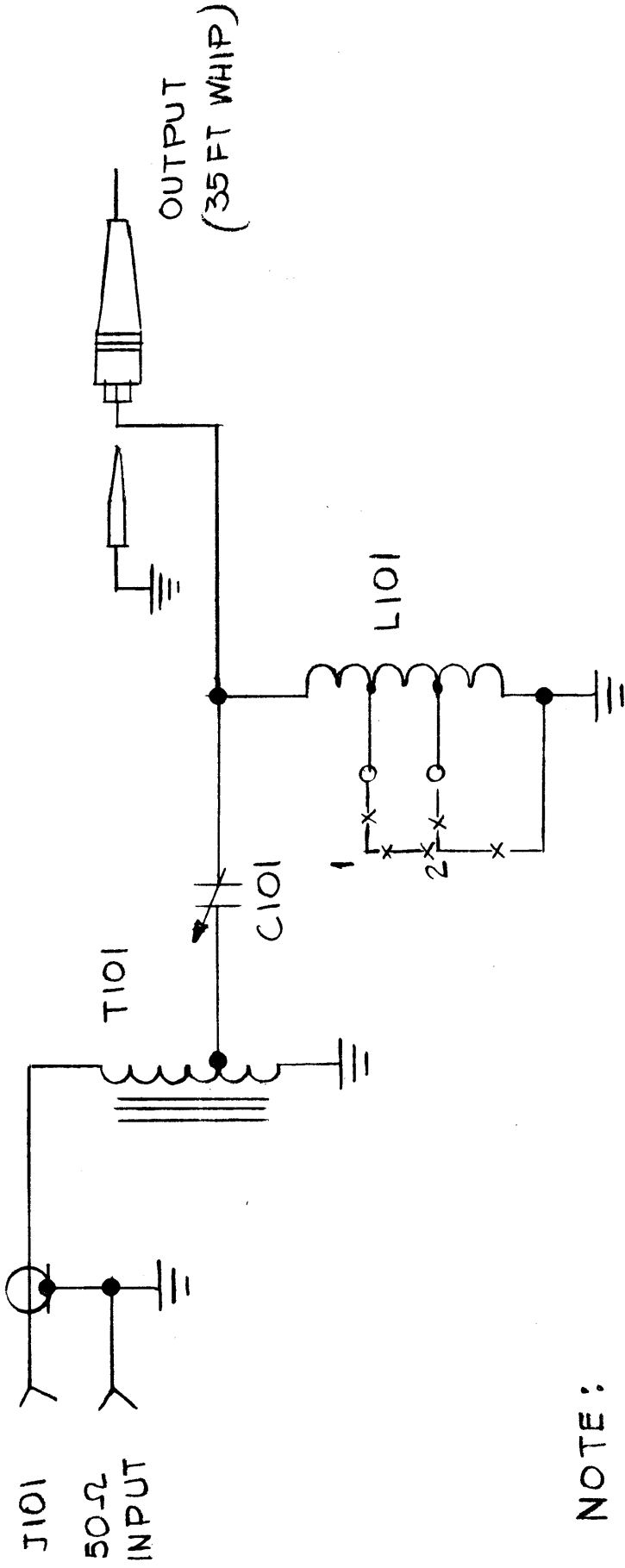


EM.N. NO.	DRAFT	CHKD	ZONE	LTR	DESCRIPTION	DATE	APPROVED
	CL			Ø	ORIGINAL RELEASE FOR PRODUCTION	3/4/75	

REVISIONS	
NO.	DESCRIPTION
1	ORIGINAL RELEASE FOR PRODUCTION

REQ'D	ITEM	PART NUMBER	DESCRIPTION	SYM.
LIST OF MATERIAL				
THE TECHNICAL MATERIEL CORP. MAMARONECK, NEW YORK				
SCHEMATIC DIAGRAM (75) NEGATIVE SUPPLY				
FINAL APPROVED	DATE	DATE	DATE	DATE
<i>GR</i>	3/4/75			
MECH. DES.				
ELECT. DES.				
CHECKED	DATE	DATE	DATE	DATE
<i>R Uzw</i>	3/4/75			
DRAWN	G.D.L.			
SIZE	CODE IDENT. NO.	DWG. NO.	ISSUE	
B	82679	CK2094	Ø	
SCALE			SHEET	OF
			1	1

UNLESS OTHERWISE SPECIFIED DIMENSIONS ARE IN INCHES AND INCLUDE CHEMICALLY APPLIED OR PLATED FINISHES		FRACTIONS 1/64	
DECIMALS	TOLS.	ANGLES	
.X ± .05	.XX ± .01	90°	30°
.XXX ± .005			
MATERIAL			
FINISH			
QTY / UNIT	KIT 403	AX5191	ASSY NO.
MODEL USED ON	APPLICATION		
CODE			
<p>NOTICE TO PERSONS RECEIVING THIS DRAWING</p> <p>THE TECHNICAL MATERIEL CORPORATION claims proprietary right in the material disclosed hereon. This drawing is issued in confidence for engineering information only and may not be reproduced or used to manufacture anything shown hereon without permission from THE TECHNICAL MATERIEL CORPORATION to the user. This drawing is loaned for mutual assistance and is subject to recall at any time.</p>			



NOTE:

- 1, 2 JUMP FOR 11343 FREQ.
- 2 JUMP FOR 8826 FREQ.
- NO JUMPERS FOR 6666 FREQ.

REVISIONS			
EMN. NO.	DRAFT CHKD	ZONE	DESCRIPTION
		X	EXP. RELEASE
	CL	Ø	ORIG RELEASE FOR PRODUCTION

DATE	APPROVED
4/1/75	

REQ'D ITEM	PART NUMBER	DESCRIPTION	SYM.
LIST OF MATERIAL			
THE TECHNICAL MATERIEL CORP. MAMARONECK, NEW YORK			
DIAGRAM SCHEMATIC FOR ATU-1K			
DATE	DATE	DATE	DATE
5/25/75			
MECH. DES.	ELECT. DES.	CHECKED	DRAWN
			G. DELUCA
SIZE	CODE IDENT. NO.	DWG. NO.	ISSUE
B	82679	CK2098	Ø
SCALE	SHEET	OF	

UNLESS OTHERWISE SPECIFIED DIMENSIONS ARE IN INCHES AND INCLUDE CHEMICALLY APPLIED OR PLATED FINISHES	FRACTIONS 1/64
DECIMALS .X ± .05 TOLS. .XX ± .01 .XXX ± .005	ANGLES 0° 30'
MATERIAL	
FINISH	

QTY / UNIT	MODEL USED ON	ASS'Y NO.
	ATU-1K	
APPLICATION		
CODE		
<p>NOTICE TO PERSONS RECEIVING THIS DRAWING</p> <p>THE TECHNICAL MATERIEL CORPORATION claims proprietary right in the material disclosed hereon. This drawing is issued in confidence for engineering information only and may not be reproduced or used to manufacture anything shown hereon without permission from THE TECHNICAL MATERIEL CORPORATION to the user. This drawing is loaned for mutual assistance and is subject to recall at any time.</p>		