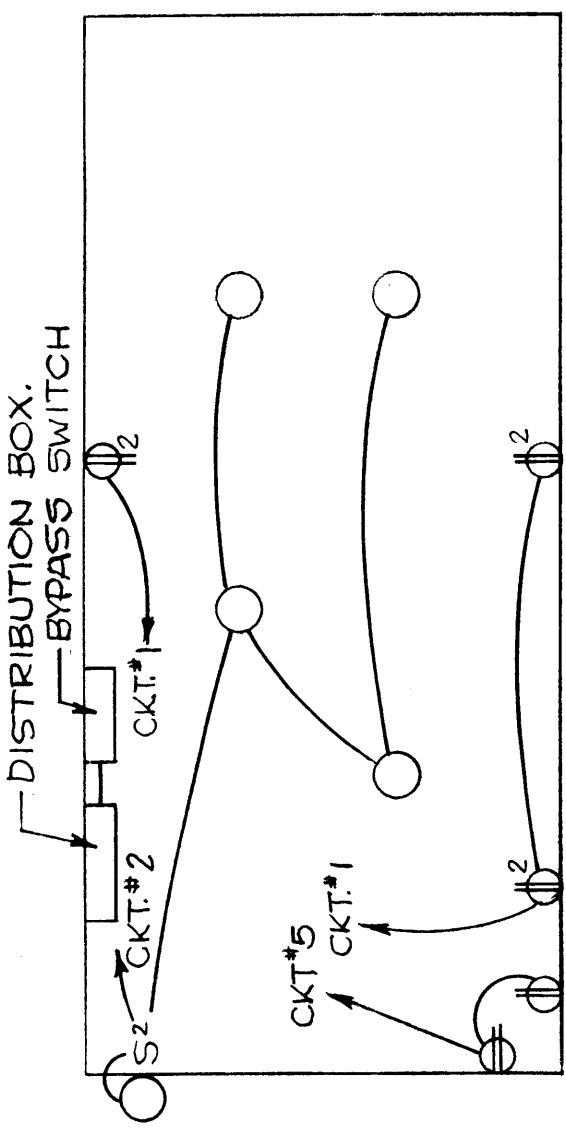


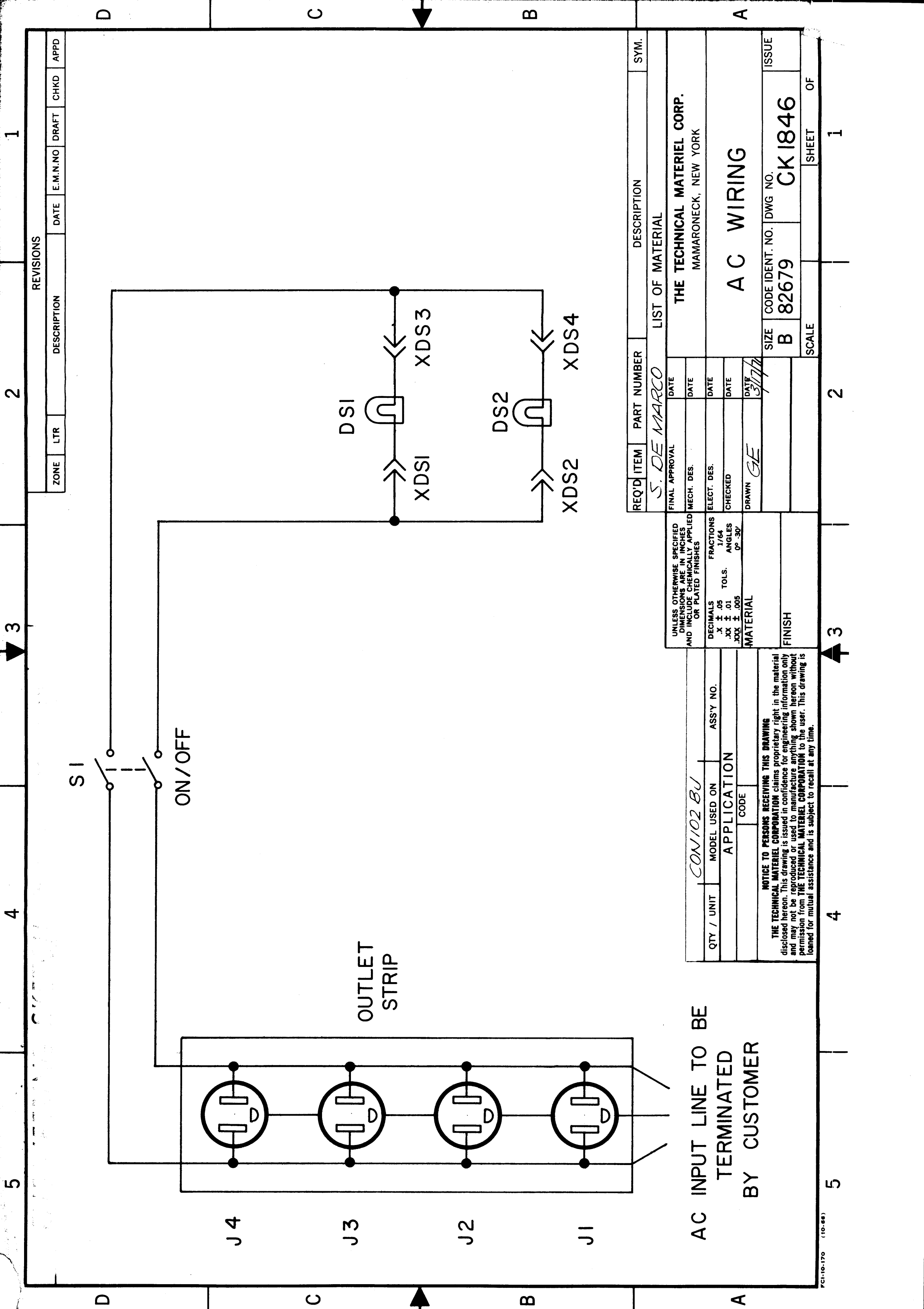
REVISIONS			
LTR	DESCRIPTION	DATE	APPD



CKT. #1 - DUPLEX OUTLETS, 3 WIRE #12AWG - BLACK, WHITE & GREEN
 CKT. #2 - LIGHTING, TOP SWITCH INSIDE - BOTTOM SWITCH OUTSIDE
 CKT. #5 - 208V TWISTLOCK OUTLETS, 3 WIRE #10AWG - 2 BLACK, 1 GREEN
 BYPASS SWITCH TO DISTRIBUTION BOX, 3 WIRE #6AWG - BLACK,
 GREEN & WHITE, CKT.#1 & 2

QTY REQ	ITEM	PART NO.	MANUFACTURER	DESCRIPTION	SYM
PARTS LIST					
UNLESS OTHERWISE SPECIFIED DIMENSIONS ARE IN INCHES AND INCLUDE CHEMICALLY APPLIED OR PLATED FINISHES REMOVE ALL BURRS AND SHARP EDGES.		DRAWN FERNANDEZ	DATE 3/10/73	THE TMC SYSTEMS AND POWER CORPORATION SPRINGFIELD, VIRGINIA	
TOLERANCES ON FRACTIONS ANGLES DECIMALS		CHECKED	DATE	SHELTER WIRING	
MATERIAL		D. ENG.	DATE	SIZE B	CODE IDENT NO. 24146
FINISH		P. MGR.	DATE 3-12-73	SCALE	DWG. NO. CK1814
NEXT ASSY		CHIEF, ENG. DEPT.	DATE	REV	
APPLICATION		<i>[Signature]</i>		SHEET / OF /	

NOTICE TO PERSONS RECEIVING THIS DRAWING
 THE TMC SYSTEMS AND POWER CORPORATION claims proprietary right in the material disclosed hereon. This drawing is issued in confidence for engineering information only and may not be reproduced or used to manufacture anything shown hereon without permission from THE TMC SYSTEMS AND POWER CORPORATION. This drawing is loaned for mutual assistance and is subject to recall at any time.



ZONE	LTR	DESCRIPTION	DATE	E.M.N.NO	DRAFT	CHKD	APPD

REVISIONS

REQ'D ITEM	PART NUMBER	DESCRIPTION	SYM.
	S. DE MARCO	LIST OF MATERIAL	
THE TECHNICAL MATERIEL CORP. MAMARONECK, NEW YORK			
AC WIRING			
SIZE	CODE IDENT. NO.	DWG NO.	ISSUE
B	82679	CK1846	
SCALE	SHEET	OF	

UNLESS OTHERWISE SPECIFIED DIMENSIONS ARE IN INCHES AND INCLUDE CHEMICALLY APPLIED OR PLATED FINISHES	FINAL APPROVAL	DATE
DECIMALS	MATERIAL	
X ± .05	FINISH	
.XX ± .01		
.XXX ± .005		
FRACTIONS		
1/64		
TOLS.		
ANGLES		
0° - 30'		

QTY / UNIT MODEL USED ON ASS'Y NO.

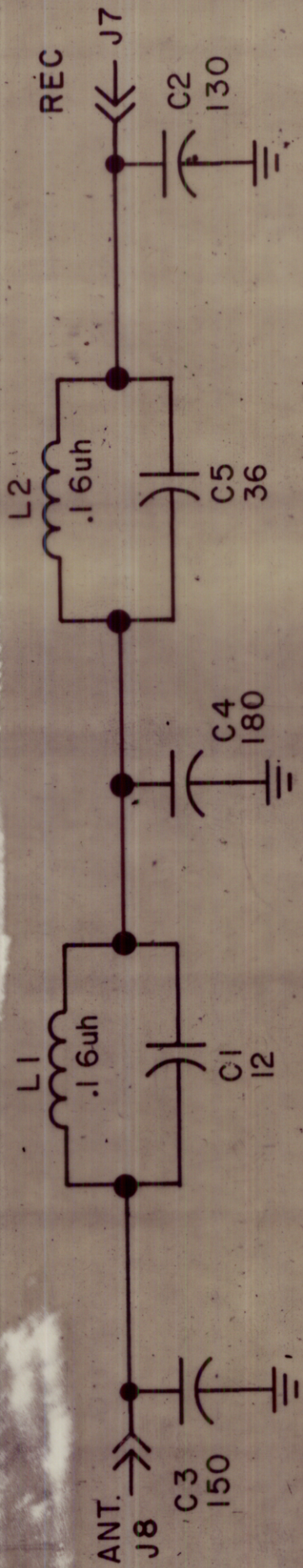
CON102 BU APPLICATION

NOTICE TO PERSONS RECEIVING THIS DRAWING
THE TECHNICAL MATERIEL CORPORATION claims proprietary right in the material disclosed hereon. This drawing is issued in confidence for engineering information only and may not be reproduced or used to manufacture anything shown hereon without permission from THE TECHNICAL MATERIEL CORPORATION to the user. This drawing is loaned for mutual assistance and is subject to recall at any time.

AC INPUT LINE TO BE TERMINATED BY CUSTOMER

REVISIONS

ZONE	LTR	DESCRIPTION	DATE	E.M.N. NO	DRAFT	CHKD	APPD
	X	EXP. RELEASE	11/20/70		RZ		
	Ø	ORIGINAL RELEASE	11/19/70		Ø		



NOTE: UNLESS OTHERWISE SPECIFIED,
 1. ALL WHOLE NO. CAPACITANCE VALUES
 ARE IN PICROFARADS.
 2. ALL INDUCTANCE VALUES
 ARE IN MICROHENRIES.

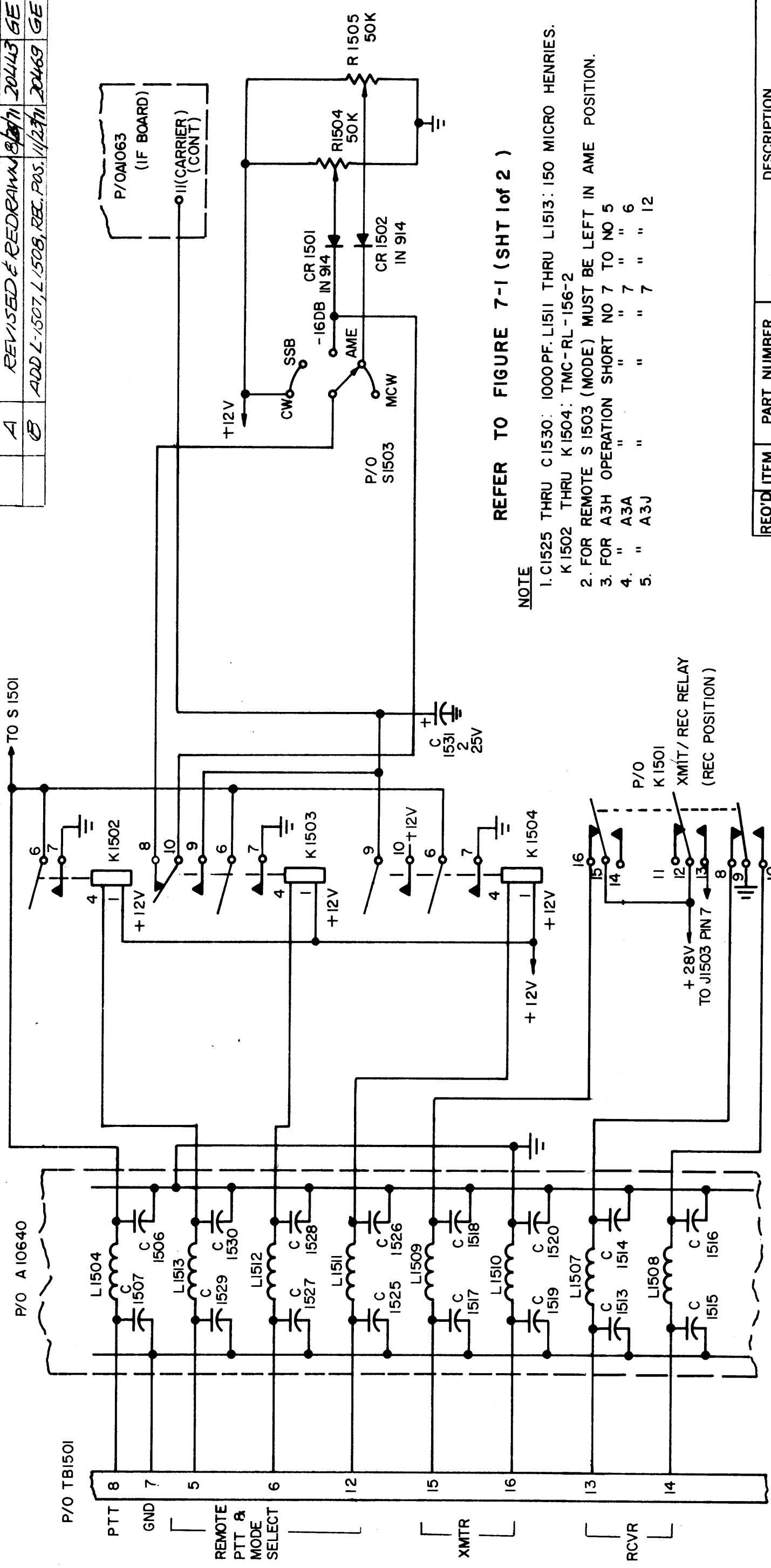
REQ'D ITEM	PART NUMBER	DESCRIPTION	SYM.
POS 12		LIST OF MATERIAL	
FINAL APPROVAL	DATE	THE TECHNICAL MATERIEL CORP. MAMARONECK, NEW YORK	
MECH. DES.	11/19/70	SCHEMATIC DIAGRAM	
ELECT. DES.	11/19/70	FILTER ASS'Y.	
CHECKED	11/19/70	SIZE	CODE IDENT. NO. DWG NO. ISSUE
DRAWN	11/20/70	B	82679 CK 1854 Ø
SCALE		SHEET 1 OF 1	

UNLESS OTHERWISE SPECIFIED DIMENSIONS ARE IN INCHES AND INCLUDE CHEMICALLY APPLIED OR PLATED FINISHES	FRACTIONS	TOLS.	ANGLES
DECIMALS	X ± .05	1/64	0°-30'
	.XX ± .01		
	.XXX ± .005		
MATERIAL			
FINISH			

QTY / UNIT	MODEL USED ON	ASSY NO.
1	RAK-127-2 ()	AX5127
APPLICATION		
CODE		

NOTICE TO PERSONS RECEIVING THIS DRAWING
 THE TECHNICAL MATERIEL CORPORATION claims proprietary right in the material disclosed hereon. This drawing is issued in confidence for engineering information only and may not be reproduced or used to manufacture anything shown hereon without permission from THE TECHNICAL MATERIEL CORPORATION to the user. This drawing is loaned for mutual assistance and is subject to recall at any time.

REVISIONS							
ZONE	LTR	DESCRIPTION	DATE	E.M.N.NO	DRAFT	CHKD	APPD
A		REVISED & REDRAWN	8/27/71	20443	GE		
B		ADD L-1507, L-1508, REC. POS. 11/23/71	20469	GE			

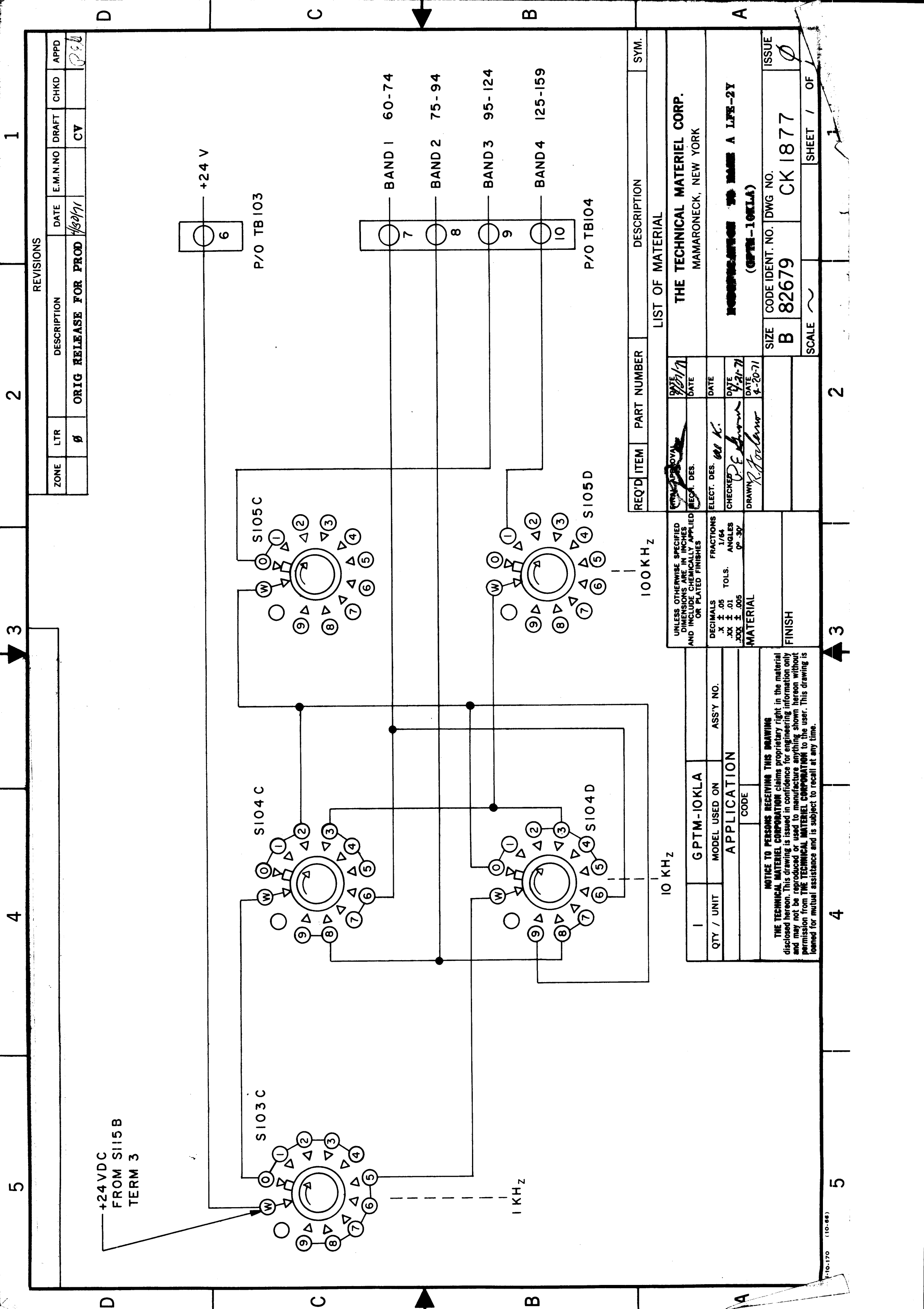


REFER TO FIGURE 7-1 (SHT 1 of 2)

NOTE

1. C1525 THRU C1530: 1000PF. L1511 THRU L1513: 150 MICRO HENRIES. K1502 THRU K1504: TMC-RL-156-2
2. FOR REMOTE S1503 (MODE) MUST BE LEFT IN AME POSITION.
3. FOR A3H OPERATION SHORT NO 7 TO NO 5
4. " A3A " " 7 " " 6
5. " A3J " " 7 " " 12

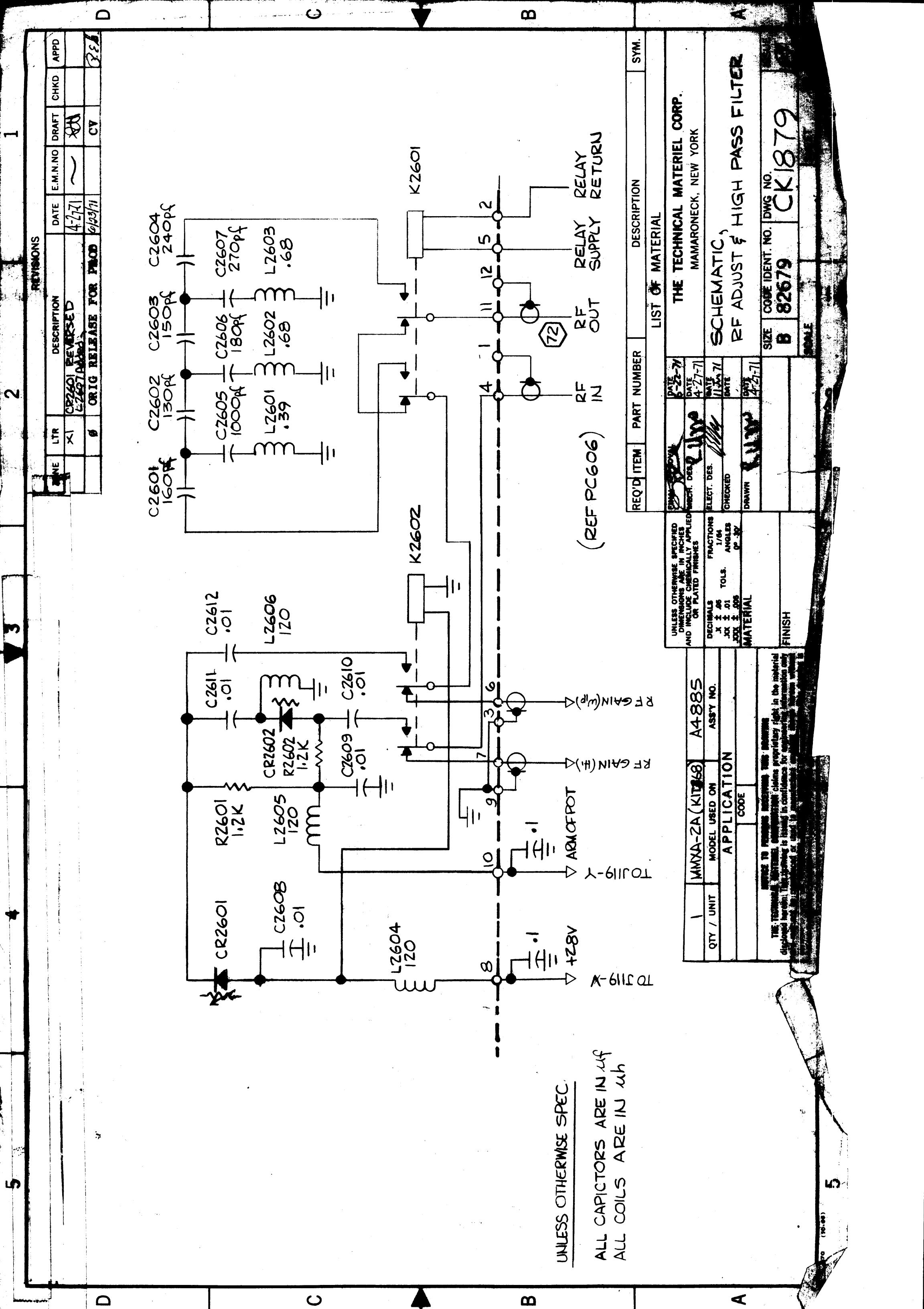
REQ'D ITEM		PART NUMBER	DESCRIPTION	SYM.
LIST OF MATERIAL				
THE TECHNICAL MATERIEL CORP. MAMARONECK, NEW YORK				
REMOTE CONTROL OF PTT & MODE MODIFICATION FOR SIDEBAND STRIP EXCITER STE-5				
FINAL APPROVAL	DATE	DATE	DATE	DATE
MECH. DES.				
ELECT. DES.				
CHECKED				
DRAWN	GE			
UNLESS OTHERWISE SPECIFIED DIMENSIONS ARE IN INCHES AND INCLUDE CHEMICALLY APPLIED OR PLATED FINISHES	DECIMALS	FRACTIONS	TOLS.	ANGLES
	.X ± .08	1/64	.XX ± .01	90° ± .30°
	.XXX ± .005			
MATERIAL				
FINISH				
QTY / UNIT	MODEL USED ON	ASS'Y NO.		
	STE-5A			
APPLICATION				
CODE				
<p>NOTICE TO PERSONS RECEIVING THIS DRAWING</p> <p>THE TECHNICAL MATERIEL CORPORATION claims proprietary right in the material disclosed hereon. This drawing is issued in confidence for engineering information only and may not be reproduced or used to manufacture anything shown hereon without permission from THE TECHNICAL MATERIEL CORPORATION to the user. This drawing is loaned for mutual assistance and is subject to recall at any time.</p>				



REVISIONS				
ZONE	LTR	DESCRIPTION	DATE	E.M.N.NO
	Ø	ORIG RELEASE FOR PROD	4/29/71	
				APPD
				CHKD
				DRAFT
				CV

REQ'D ITEM	PART NUMBER	DESCRIPTION	SYM.
LIST OF MATERIAL			
THE TECHNICAL MATERIEL CORP.			
MAMARONECK, NEW YORK			
RECOMMENDATION TO MAKE A LIFE-2Y (GPTM-10KLA)			
DATE 9/21/71			
DATE			
DATE			
DATE 4-21-71			
DATE 4-20-71			
SIZE B	CODE IDENT. NO. 82679	DWG NO. CK 1877	ISSUE Ø
SCALE ~	SHEET 1 OF 1		

UNLESS OTHERWISE SPECIFIED DIMENSIONS ARE IN INCHES AND INCLUDE CHEMICALLY APPLIED OR PLATED FINISHES		DECIMALS .X ± .05 .XX ± .01 .XXX ± .005		FRACTIONS 1/64		ANGLES p. 307	
MATERIAL		FINISH		GPTM-10KLA		ASSY NO.	
QTY / UNIT		MODEL USED ON		APPLICATION		CODE	
<p>NOTICE TO PERSONS RECEIVING THIS DRAWING</p> <p>THE TECHNICAL MATERIEL CORPORATION claims proprietary right in the material disclosed hereon. This drawing is issued in confidence for engineering information only and may not be reproduced or used to manufacture anything shown hereon without permission from THE TECHNICAL MATERIEL CORPORATION to the user. This drawing is loaned for mutual assistance and is subject to recall at any time.</p>							



UNLESS OTHERWISE SPEC.

ALL CAPACITORS ARE IN μf
ALL COILS ARE IN μh

(REF PC606)

REVISIONS

REV	DATE	DESCRIPTION	E.M.N.O	DRAFT	CHKD	APPD
1	4-27-71	CR2601 REVERSED				
2	6/23/71	L2601 REVERSED				
3		ORIG RELEASE FOR PROD				

REQ'D ITEM	PART NUMBER	DESCRIPTION	SYM.
		LIST OF MATERIAL	

DATE	DATE	DATE	DATE
8-22-71	4-27-71	11-22-71	4-27-71

UNLESS OTHERWISE SPECIFIED DIMENSIONS ARE IN INCHES AND INCLUDE CHEMICALLY APPLIED FINISHES OR PLATED FINISHES	DECIMALS	FRACTIONS	TOLS.	ANGLES
	X ± .06	1/64		
	.XX ± .01			
	.XXX ± .005			

QTY / UNIT	MODEL USED ON	ASSY NO.
1	MMXA-2A (KIT 68)	A4885

THE TECHNICAL MATERIAL CORP.	THE TECHNICAL MATERIAL CORP.
MAMARONECK, NEW YORK	MAMARONECK, NEW YORK
SCHMATIC, RF ADJUST & HIGH PASS FILTER	SCHMATIC, RF ADJUST & HIGH PASS FILTER
SIZE B	CODE IDENT. NO. CK1879
	DWG NO. CK1879

UNLESS OTHERWISE SPECIFIED DIMENSIONS ARE IN INCHES AND INCLUDE CHEMICALLY APPLIED FINISHES OR PLATED FINISHES

DECIMALS: X ± .06, .XX ± .01, .XXX ± .005

FRACTIONS: 1/64

TOLS.: .XX ± .01, .XXX ± .005

ANGLES: P. 3V

MATERIAL: FINISH

QTY / UNIT: 1

MODEL USED ON: MMXA-2A (KIT 68)

ASSY NO.: A4885

APPLICATION: RF ADJUST & HIGH PASS FILTER

CODE:

THE TECHNICAL MATERIAL CORP. MAMARONECK, NEW YORK

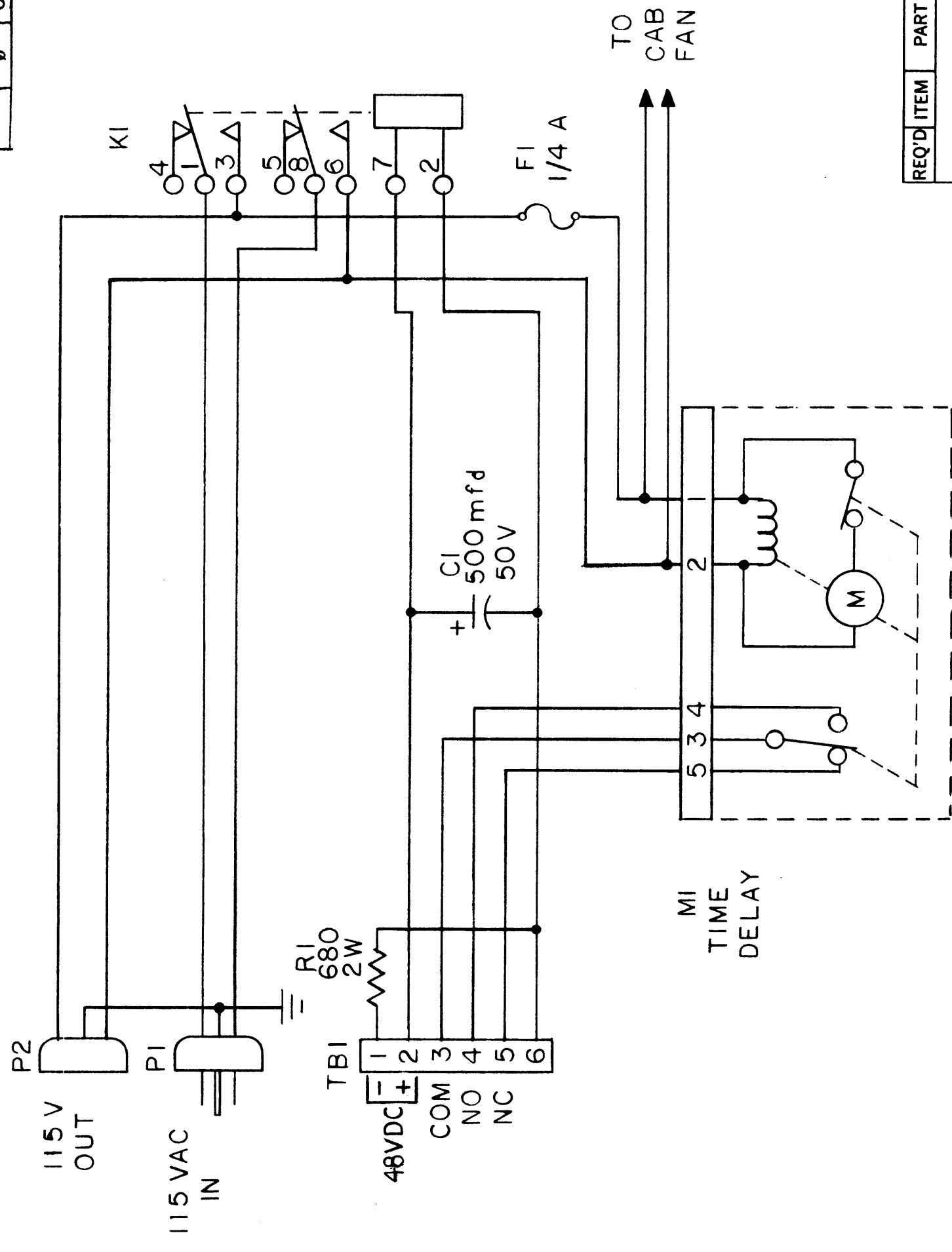
SCHMATIC, RF ADJUST & HIGH PASS FILTER

SIZE B CODE IDENT. NO. CK1879

DWG NO. CK1879

5 4 3 2 1

REVISIONS				
ZONE	LTR	DESCRIPTION	DATE	E.M.N.NO
	Ø	ORIG RELEASE FOR PROD	9/15/71	
				APPD
				CHKD
				CV



REQ'D ITEM	PART NUMBER	DESCRIPTION	SYM.
LIST OF MATERIAL			
FINAL APPROVAL	DATE	THE TECHNICAL MATERIEL CORP. MAMARONECK, NEW YORK	
MECH. DES.	18 Aug 71		
ELECT. DES.	18 Aug 71		
CHECKED			
DRAWN	18 Aug 71		
UNLESS OTHERWISE SPECIFIED DIMENSIONS ARE IN INCHES AND INCLUDE CHEMICALLY APPLIED OR PLATED FINISHES			
DECIMALS	FRACTIONS		
.X ± .05	1/64		
.XX ± .01	ANGLES		
.XXX ± .005	Ø .30		
MATERIAL			
FINISH			

QTY / UNIT	SYM 1202	AX5135	
MODEL USED ON	APPLICATION		
CODE			
<p>NOTICE TO PERSONS RECEIVING THIS DRAWING</p> <p>THE TECHNICAL MATERIEL CORPORATION claims proprietary right in the material disclosed hereon. This drawing is issued in confidence for engineering information only and may not be reproduced or used to manufacture anything shown hereon without permission from THE TECHNICAL MATERIEL CORPORATION to the user. This drawing is loaned for mutual assistance and is subject to recall at any time.</p>			
SIZE	CODE IDENT. NO.	DWG NO.	ISSUE
B	82679	CK 1899	
SCALE	SHEET	OF	
	2	1	