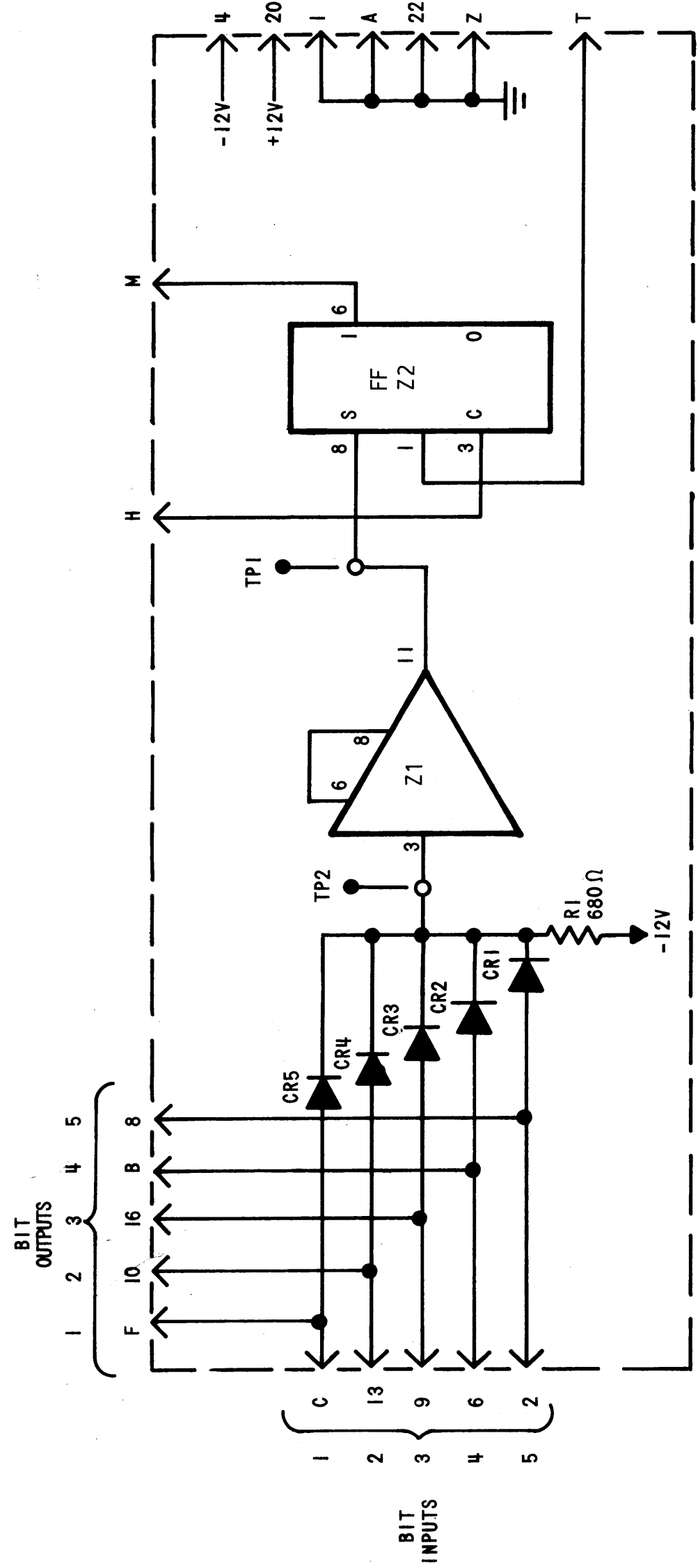


ZONE	LTR	DESCRIPTION	DATE	E.M.N.NO	DRAFT	CHKD	APPD
	X2	REVISED & REDRAWN	4/14/69		CV		
	X3	REVISED AND UPDATED	5/14/69		CV		
		ORIGINAL RELEASE FOR PRODUCTION	5/19/69		GE		



SYMBOL	PIN CONNECTION	
	+12V	-12V GND
Z1	10	2 & 9
Z2	10	2

LAST SYMBOL	MISSING SYMBOL
CR5	
R1	
TP2	
Z2	

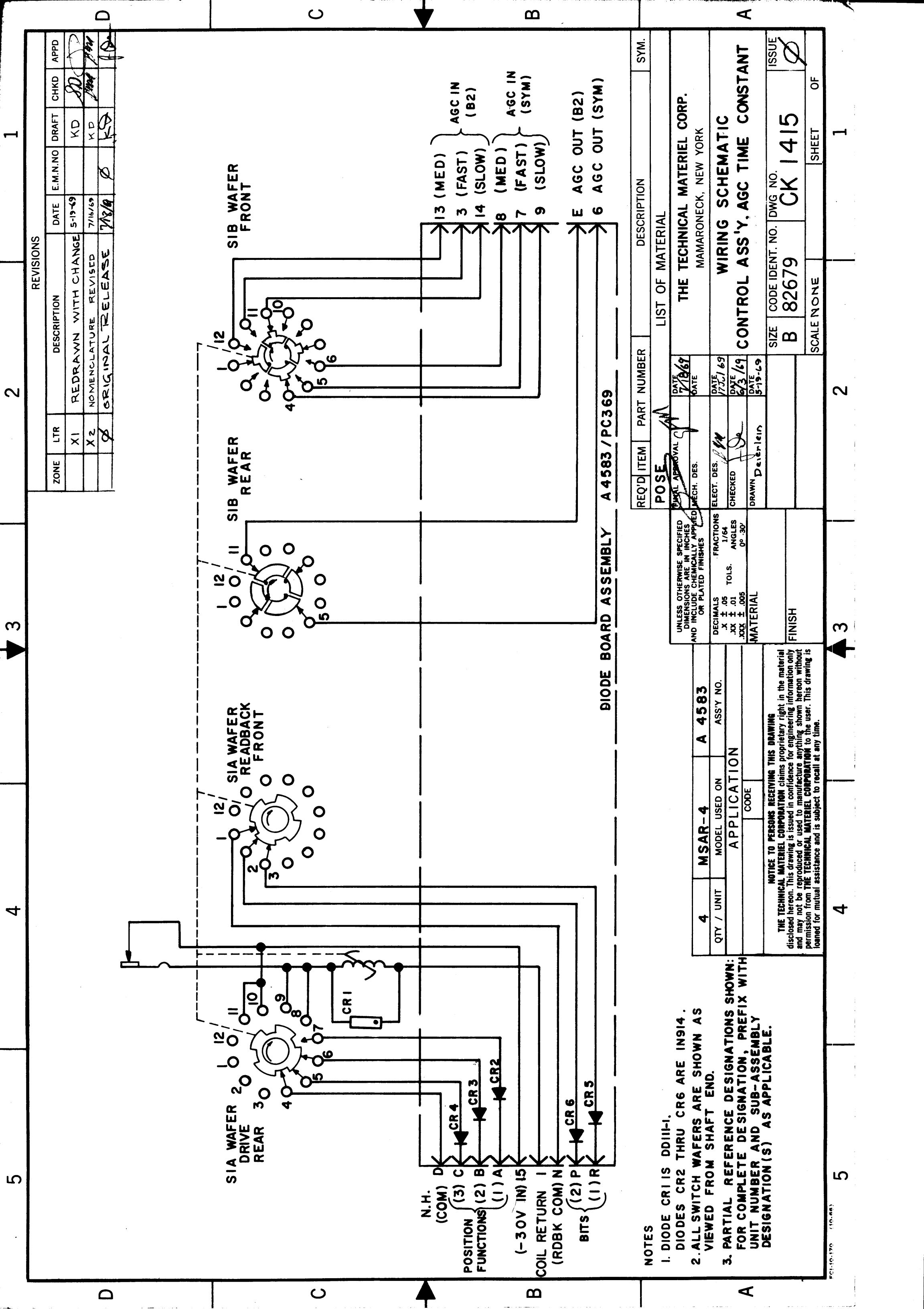
- NOTES:
- 1- ALL DIODES ARE TYPE IN914.
 - 2- PARTIAL REFERENCE DESIGNATIONS ARE SHOWN; FOR COMPLETE DESIGNATION, PREFIX WITH UNIT NUMBER AND SUB-ASSEMBLY DESIGNATION(S) AS APPLICABLE.

REQ'D ITEM	PART NUMBER	DESCRIPTION	SYM.
S. DeMARCO			
LIST OF MATERIAL			
THE TECHNICAL MATERIEL CORP.			
MAMARONECK, NEW YORK			
DIAGRAM, SCHEMATIC			
GATING CIRCUIT			
SIZE	CODE IDENT. NO.	DWG. NO.	ISSUE
B	82679	CK 1404	Ø
SCALE	SHEET	OF	
	5-38	1	5/5

UNLESS OTHERWISE SPECIFIED DIMENSIONS ARE IN INCHES AND INCLUDE CHEMICALLY APPLIED OR PLATED FINISHES.	DECIMALS	FRACTIONS	TOLS.	ANGLES
.X ± .05	1/64			
.XX ± .01				
.XXX ± .005				
MATERIAL				
FINISH				

QTY / UNIT	MODEL USED ON	ASSY NO.
	RTPH-()	AU598
APPLICATION		
CODE		

NOTICE TO PERSONS RECEIVING THIS DRAWING
 THE TECHNICAL MATERIEL CORPORATION claims proprietary right in the material disclosed hereon. This drawing is issued in confidence for engineering information only and may not be reproduced or used to manufacture anything shown hereon without permission from THE TECHNICAL MATERIEL CORPORATION to the user. This drawing is loaned for mutual assistance and is subject to recall at any time.



ZONE	LTR	DESCRIPTION	DATE	E.M.N.NO	DRAFT	CHKD	APPD
	X1	REDRAWN WITH CHANGE	5-19-69		KD		
	X2	NOMENCLATURE REVISED	7/16/69		KD		
	Ø	ORIGINAL RELEASE	7/18/69		KD		

REQ'D ITEM	PART NUMBER	DESCRIPTION	SYM.
POSE		LIST OF MATERIAL	
		THE TECHNICAL MATERIEL CORP.	
		MAMARONECK, NEW YORK	
		WIRING SCHEMATIC	
		CONTROL ASS'Y. AGC TIME CONSTANT	
		SIZE B	ISSUE Ø
		CODE IDENT. NO. CK 1415	
		SCALE NONE	SHEET 1
			OF 1

REVISIONS	DATE	DESCRIPTION
	5-19-69	REDRAWN WITH CHANGE
	7/16/69	NOMENCLATURE REVISED
	7/18/69	ORIGINAL RELEASE

QTY / UNIT	MODEL USED ON	ASSY NO.
4	MSAR-4	A 4583
	APPLICATION	
	CODE	

UNLESS OTHERWISE SPECIFIED DIMENSIONS ARE IN INCHES AND INCLUDE CHEMICALLY APPLIED OR PLATED FINISHES

DECIMALS FRACTIONS
 .X ± .05 TOLS. 1/64
 .XX ± .01 ANGLES
 .XXX ± .005 0°-30'

MATERIAL FINISH

DIODE BOARD ASSEMBLY A 4583 / PC369

NOTICE TO PERSONS RECEIVING THIS DRAWING
 THE TECHNICAL MATERIEL CORPORATION claims proprietary right in the material disclosed hereon. This drawing is issued in confidence for engineering information only and may not be reproduced or used to manufacture anything shown hereon without permission from THE TECHNICAL MATERIEL CORPORATION to the user. This drawing is loaned for mutual assistance and is subject to recall at any time.

NOTES

- DIODE CR1 IS DDIII-I.
- DIODES CR2 THRU CR6 ARE IN914.
- ALL SWITCH WAFERS ARE SHOWN AS VIEWED FROM SHAFT END.
- PARTIAL REFERENCE DESIGNATIONS SHOWN: FOR COMPLETE DESIGNATION, PREFIX WITH UNIT NUMBER AND SUB-ASSEMBLY DESIGNATION(S) AS APPLICABLE.

PC-10-170 (10-68)

5

4

3

2

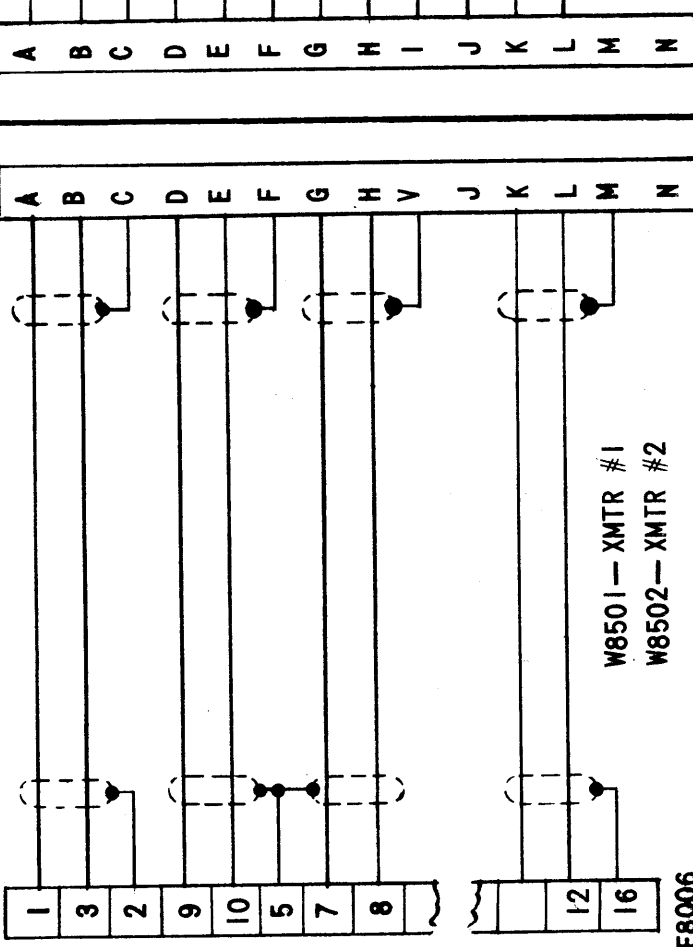
1

REVISIONS

ZONE	LTR	DESCRIPTION	DATE	E.M.N.NO	DRAFT	CHKD	APPD
	X	EXPER. RELEASE	11-3-67		AKA		
	Ø	ORIGINAL REL FOR PROD	11-6-67				
	A	COMPLETELY REV.	2.7.68	18759	CV		
	B	PICTORIALS CLARIFIED	10.7.68	19064	K.H.		

WIRE SIZE #22 AWG

MS3106 B32-13P

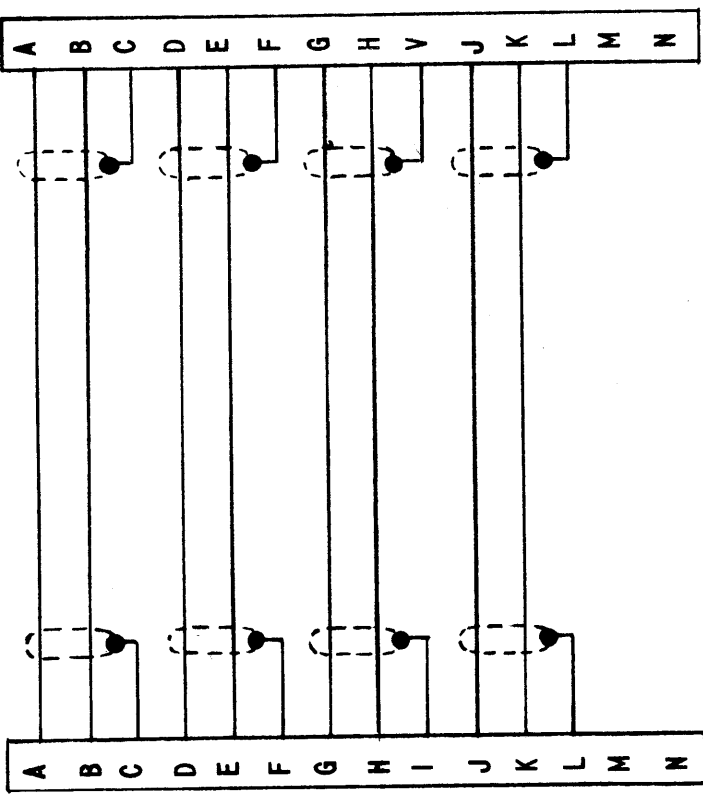


P8501B - XMTR #1
P8502B - XMTR #2

XMTR TO CONTROL CONSOLE

WIRE SIZE #22 AWG

MS3106B32-13P BOTH ENDS



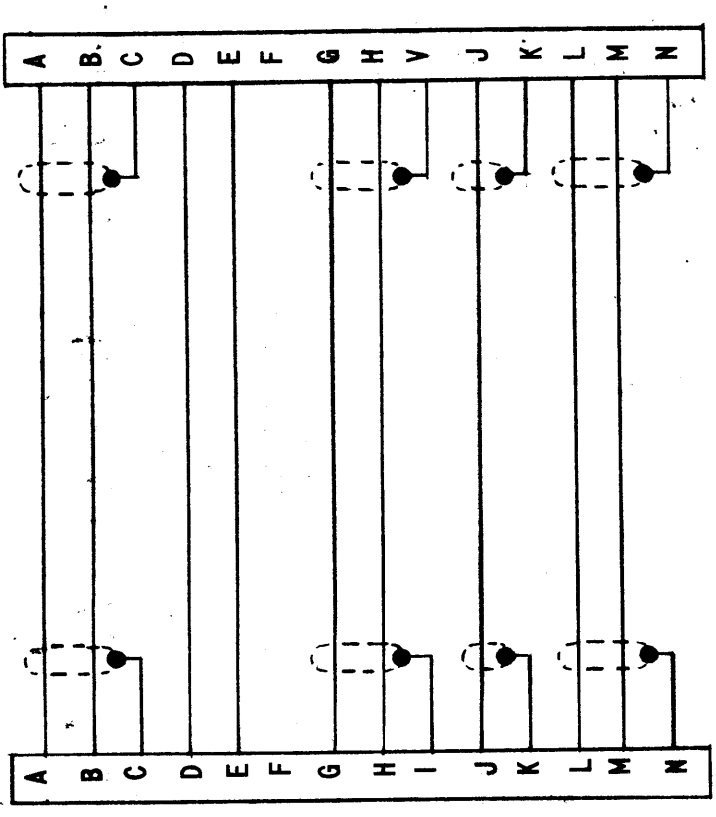
P8502A
P8504A
W8503
* W8513

RCVR #2 TO CONTROL CONSOLE

* FOR W8513 CONNECTIONS BETWEEN PIN J NOT USED

WIRE SIZE #22 AWG

MS3106B32-13P BOTH ENDS



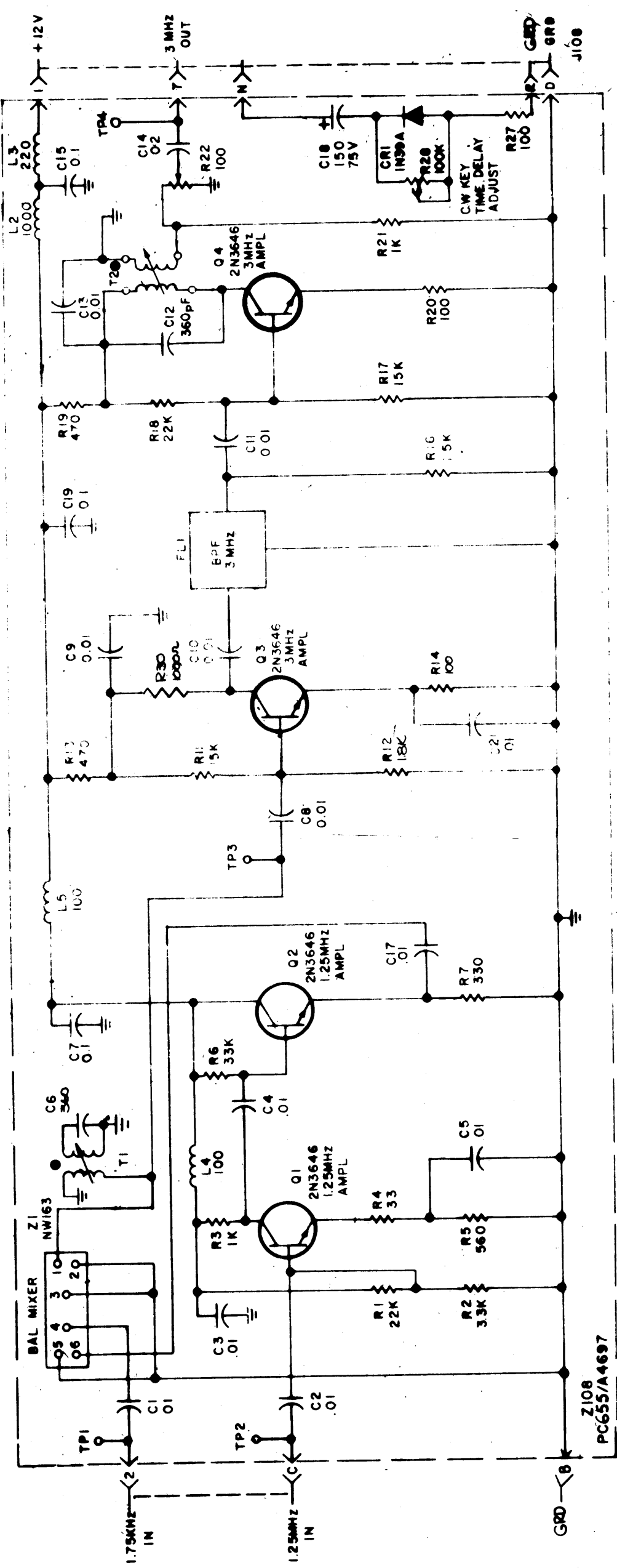
P8503A
P8504B
W8504

RCVR #2 TO CONTROL CONSOLE

REF: SYM678368 SHEET 1 OF 3

REQ'D ITEM	PART NUMBER	DESCRIPTION	SYM.																					
M. STUBMER		LIST OF MATERIAL																						
<table border="1"> <tr> <td>FINAL APPROVAL</td> <td>DATE</td> <td>11/3/67</td> </tr> <tr> <td>MECH. DES.</td> <td>DATE</td> <td>11-6-67</td> </tr> <tr> <td>ELECT. DES.</td> <td>DATE</td> <td>11-6-67</td> </tr> <tr> <td>CHECKED</td> <td>DATE</td> <td>11-6-67</td> </tr> <tr> <td>DRAWN</td> <td>DATE</td> <td>11-3-67</td> </tr> </table>				FINAL APPROVAL	DATE	11/3/67	MECH. DES.	DATE	11-6-67	ELECT. DES.	DATE	11-6-67	CHECKED	DATE	11-6-67	DRAWN	DATE	11-3-67						
FINAL APPROVAL	DATE	11/3/67																						
MECH. DES.	DATE	11-6-67																						
ELECT. DES.	DATE	11-6-67																						
CHECKED	DATE	11-6-67																						
DRAWN	DATE	11-3-67																						
<table border="1"> <tr> <td>UNLESS OTHERWISE SPECIFIED DIMENSIONS ARE IN INCHES AND INCLUDE CHEMICALLY APPLIED OR PLATED FINISHES</td> <td>DATE</td> <td>11/3/67</td> </tr> <tr> <td>DECIMALS</td> <td>FRACTIONS</td> <td></td> </tr> <tr> <td>.X ± .05</td> <td>1/64</td> <td></td> </tr> <tr> <td>.XX ± .01</td> <td>TOLS.</td> <td></td> </tr> <tr> <td>.XXX ± .005</td> <td>ANGLES</td> <td>0° .30'</td> </tr> <tr> <td colspan="3">MATERIAL</td> </tr> <tr> <td colspan="3">FINISH</td> </tr> </table>				UNLESS OTHERWISE SPECIFIED DIMENSIONS ARE IN INCHES AND INCLUDE CHEMICALLY APPLIED OR PLATED FINISHES	DATE	11/3/67	DECIMALS	FRACTIONS		.X ± .05	1/64		.XX ± .01	TOLS.		.XXX ± .005	ANGLES	0° .30'	MATERIAL			FINISH		
UNLESS OTHERWISE SPECIFIED DIMENSIONS ARE IN INCHES AND INCLUDE CHEMICALLY APPLIED OR PLATED FINISHES	DATE	11/3/67																						
DECIMALS	FRACTIONS																							
.X ± .05	1/64																							
.XX ± .01	TOLS.																							
.XXX ± .005	ANGLES	0° .30'																						
MATERIAL																								
FINISH																								
<table border="1"> <tr> <td>QTY / UNIT</td> <td>MODEL USED ON</td> <td>ASSY NO.</td> </tr> <tr> <td></td> <td>AVONDALE</td> <td></td> </tr> <tr> <td colspan="3">APPLICATION</td> </tr> <tr> <td colspan="3">CODE</td> </tr> </table>				QTY / UNIT	MODEL USED ON	ASSY NO.		AVONDALE		APPLICATION			CODE											
QTY / UNIT	MODEL USED ON	ASSY NO.																						
	AVONDALE																							
APPLICATION																								
CODE																								
<p>NOTICE TO PERSONS RECEIVING THIS DRAWING</p> <p>THE TECHNICAL MATERIEL CORPORATION claims proprietary right in the material disclosed hereon. This drawing is issued in confidence for engineering information only and may not be reproduced or used to manufacture anything shown hereon without permission from THE TECHNICAL MATERIEL CORPORATION to the user. This drawing is loaned for mutual assistance and is subject to recall at any time.</p>																								
<table border="1"> <tr> <td>SIZE</td> <td>CODE IDENT. NO.</td> <td>DWG NO.</td> <td>ISSUE</td> </tr> <tr> <td>B</td> <td>82679</td> <td>CK 1420</td> <td>B</td> </tr> </table>		SIZE	CODE IDENT. NO.	DWG NO.	ISSUE	B	82679	CK 1420	B	<table border="1"> <tr> <td>SCALE</td> <td>SHEET</td> <td>OF</td> </tr> <tr> <td>M/L</td> <td>1</td> <td>1</td> </tr> </table>		SCALE	SHEET	OF	M/L	1	1							
SIZE	CODE IDENT. NO.	DWG NO.	ISSUE																					
B	82679	CK 1420	B																					
SCALE	SHEET	OF																						
M/L	1	1																						

REV	DATE	DESCRIPTION	BY	CHKD
1	12-27-67	RELEASE
2	1-18-68	REVISED
3	1-18-68	REVISED
4	1-18-68	REVISED
5	1-18-68	REVISED
6	1-18-68	REVISED
7	1-18-68	REVISED
8	1-18-68	REVISED
9	1-18-68	REVISED
10	1-18-68	REVISED
11	1-18-68	REVISED
12	1-18-68	REVISED
13	1-18-68	REVISED
14	1-18-68	REVISED
15	1-18-68	REVISED
16	1-18-68	REVISED
17	1-18-68	REVISED
18	1-18-68	REVISED
19	1-18-68	REVISED
20	1-18-68	REVISED
21	1-18-68	REVISED
22	1-18-68	REVISED
23	1-18-68	REVISED
24	1-18-68	REVISED
25	1-18-68	REVISED
26	1-18-68	REVISED
27	1-18-68	REVISED
28	1-18-68	REVISED
29	1-18-68	REVISED
30	1-18-68	REVISED
31	1-18-68	REVISED
32	1-18-68	REVISED
33	1-18-68	REVISED
34	1-18-68	REVISED
35	1-18-68	REVISED
36	1-18-68	REVISED
37	1-18-68	REVISED
38	1-18-68	REVISED
39	1-18-68	REVISED
40	1-18-68	REVISED
41	1-18-68	REVISED
42	1-18-68	REVISED
43	1-18-68	REVISED
44	1-18-68	REVISED
45	1-18-68	REVISED
46	1-18-68	REVISED
47	1-18-68	REVISED
48	1-18-68	REVISED
49	1-18-68	REVISED
50	1-18-68	REVISED



SYMBOL SERIES 1000

- NOTE: UNLESS OTHERWISE SPECIFIED:
- 1- ALL RESISTANCE VALUES ARE IN OHMS / KW
 - 2- ALL CAPACITANCE VALUES ARE IN MICROFARADS.
 - 3- ALL INDUCTANCE VALUES ARE IN MICRO-FARADS.

LAST SYMBOL	MISSING SYMBOL
C21	C16
C27	
C31	
FL1	
L3	
Q4	
R20	R8, R9, R10, R23, R24, R25
T2	R26
TP4	
Z1	

QTY	REQUIREMENT	PART NO.	DESCRIPTION	SYMBOL
			LIST OF MATERIAL	
			THE TECHNICAL MATERIEL CORP. MAMARONECK, NEW YORK	
			DIAGRAM, SCHEMATIC	
			3 MC BALANCED MIXER	
			SIZE CODE IDENT NO: DWG NO.	ISSUE
			C 82679	H
			CK1455	
			SCALE	SHEET
				OF

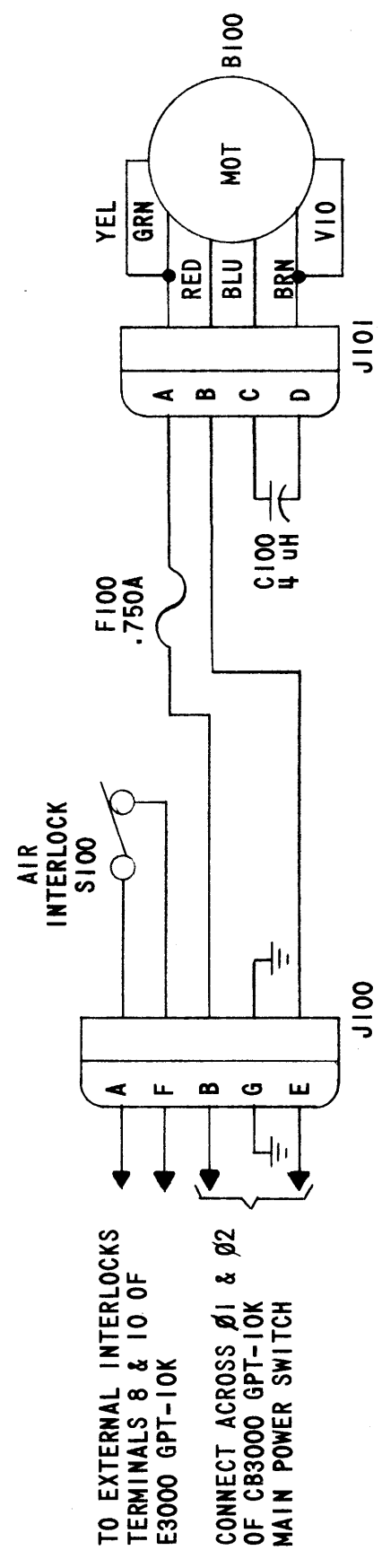
NOTICE TO PERSONS RECEIVING THIS DRAWING

THE TECHNICAL MATERIEL CORPORATION

This drawing is issued in confidence and is not to be distributed outside the organization to which it is issued. It is the property of the Technical Materiel Corporation and is not to be used for any other purpose without the written consent of the Technical Materiel Corporation.

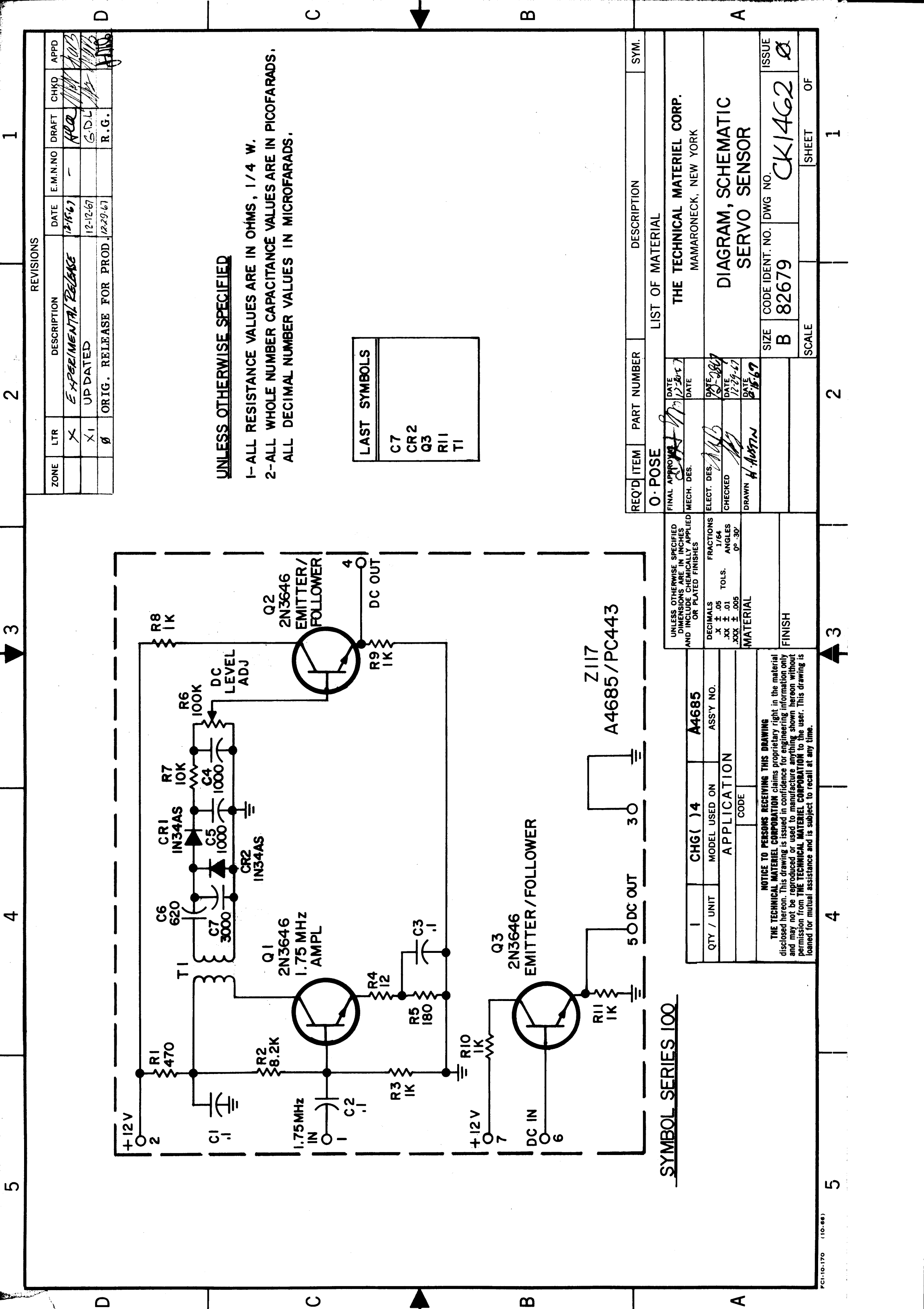
QTY	UNIT	CHG NO	MODE USE	APPLICATION
		A4697		

REVISIONS					
ZONE	LTR	DESCRIPTION	DATE	E.M.N.NO	APPD
	X	EXP. RELEASE	12-7-67	-	H.G.
	Ø	ORIG. RELEASE FOR PROD	3/21/69		RG



REQ'D ITEM	PART NUMBER	DESCRIPTION	SYM.
LIST OF MATERIAL			
THE TECHNICAL MATERIEL CORP. MAMARONECK, NEW YORK			
DIAGRAM, WIRING, FAN			
SIZE	CODE IDENT. NO.	DWG NO.	ISSUE
B	82679	CK 1457	1
SCALE			SHEET OF
			1

UNLESS OTHERWISE SPECIFIED DIMENSIONS ARE IN INCHES AND INCLUDE CHEMICALLY APPLIED OR PLATED FINISHES	DECIMALS .X ± .05 .XX ± .01 .XXX ± .005	FRACTIONS 1/64	TOLS. ANGLES 0°-30'
MATERIAL			
FINISH			
QTY / UNIT		MODEL USED ON	ASSY NO.
		TRC-20 KA	
		APPLICATION	
		CODE	S401-451
<p>NOTICE TO PERSONS RECEIVING THIS DRAWING THE TECHNICAL MATERIEL CORPORATION claims proprietary right in the material disclosed hereon. This drawing is issued in confidence for engineering information only and may not be reproduced or used to manufacture anything shown hereon without permission from THE TECHNICAL MATERIEL CORPORATION to the user. This drawing is loaned for mutual assistance and is subject to recall at any time.</p>			



SYMBOL SERIES 100

UNLESS OTHERWISE SPECIFIED
 1-ALL RESISTANCE VALUES ARE IN OHMS, 1/4 W.
 2-ALL WHOLE NUMBER CAPACITANCE VALUES ARE IN PICOFARADS,
 ALL DECIMAL NUMBER VALUES IN MICROFARADS.

LAST SYMBOLS	
C7	
CR2	
Q3	
R11	
T1	

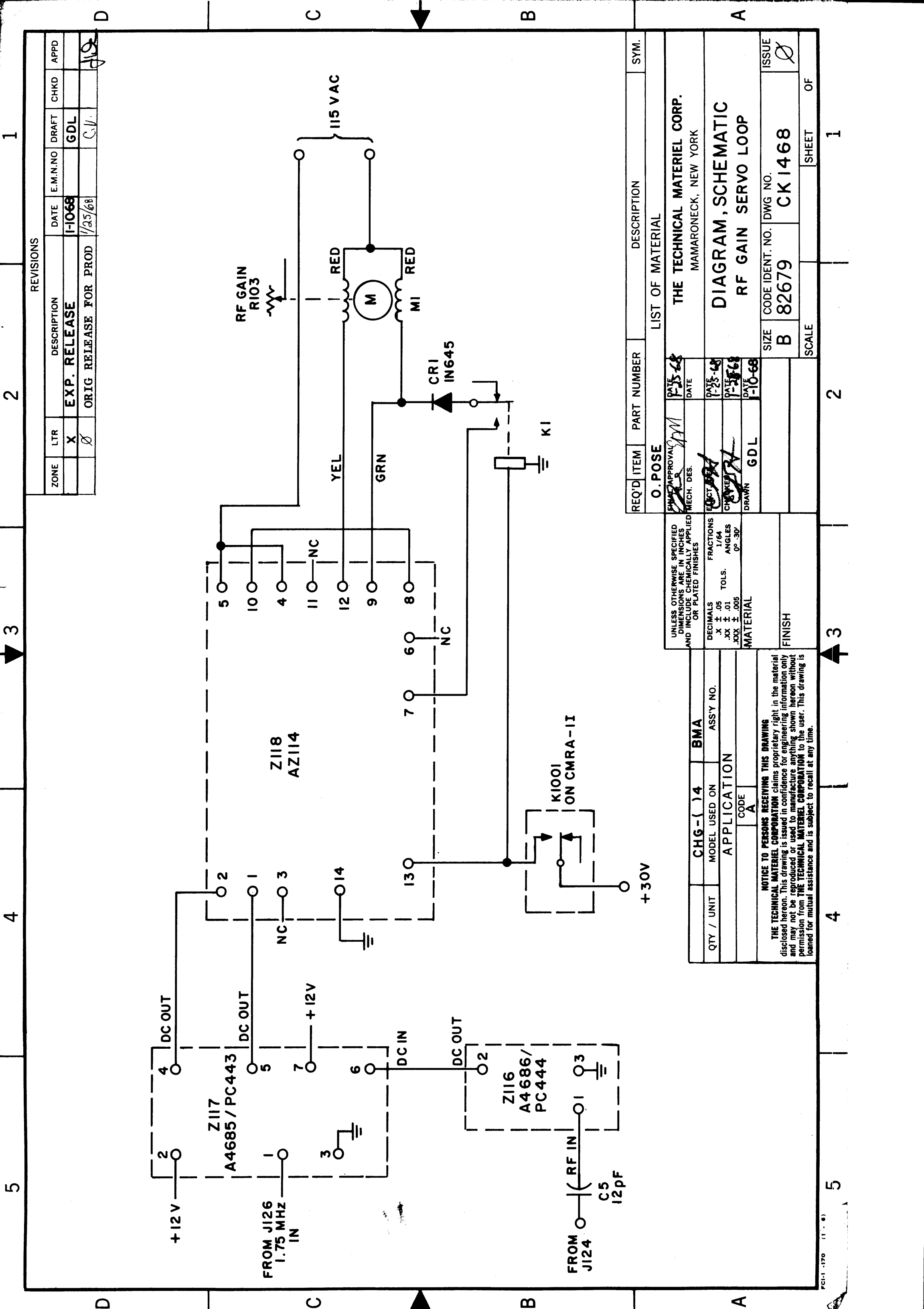
REVISIONS						
ZONE	LTR	DESCRIPTION	DATE	E.M.N.NO	CHKD	APPD
	X	EXPERIMENTAL RELEASE	12-15-67		ARC	
	X1	UPDATED	12-12-67		G.D.L.	
	Ø	ORIG. RELEASE FOR PROD.	12-29-67		R.G.	

REQ'D ITEM	PART NUMBER	DESCRIPTION	SYM.
O- POSE			
FINAL APPROVAL		DATE	
MECH. DES.		DATE	
ELECT. DES.		DATE	
CHECKED		DATE	
DRAWN		DATE	
LIST OF MATERIAL		THE TECHNICAL MATERIEL CORP. MAMARONECK, NEW YORK	
DIAGRAM, SCHEMATIC		SERVO SENSOR	
SIZE	CODE IDENT. NO.	DWG NO.	ISSUE
B	82679	CK1462	Ø
SCALE	SHEET	OF	

UNLESS OTHERWISE SPECIFIED DIMENSIONS ARE IN INCHES AND INCLUDE CHEMICALLY APPLIED OR PLATED FINISHES	
DECIMALS	FRACTIONS
.X ± .05	1/64
.XX ± .01	TOLS.
.XXX ± .005	ANGLES
	0°-30'
MATERIAL	
FINISH	

QTY / UNIT	MODEL USED ON	ASSY NO.
1	CHG () 4	A4685
APPLICATION		
CODE		

NOTICE TO PERSONS RECEIVING THIS DRAWING
 THE TECHNICAL MATERIEL CORPORATION claims proprietary right in the material disclosed hereon. This drawing is issued in confidence for engineering information only and may not be reproduced or used to manufacture anything shown hereon without permission from THE TECHNICAL MATERIEL CORPORATION to the user. This drawing is loaned for mutual assistance and is subject to recall at any time.



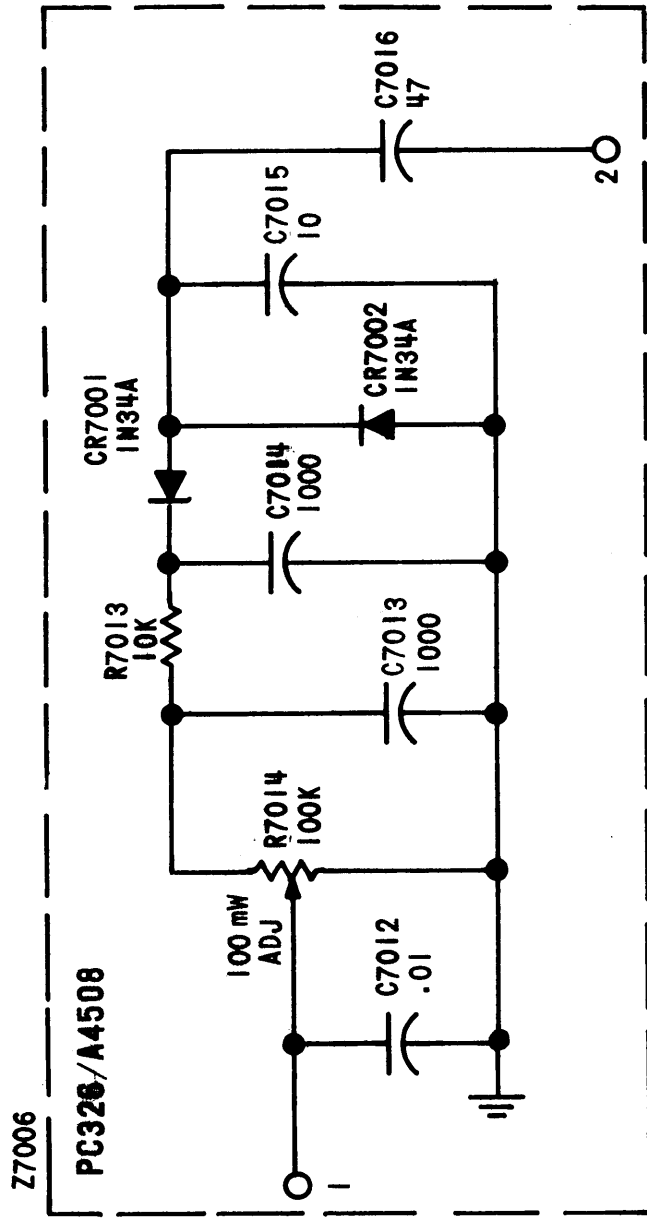
REVISIONS			
ZONE	LTR	DESCRIPTION	DATE
	X	EXP. RELEASE	1-10-68
	Ø	ORIG RELEASE FOR PROD	1/25/68

REQ'D ITEM	PART NUMBER	DESCRIPTION	SYM.
O. POSE			
LIST OF MATERIAL			

UNLESS OTHERWISE SPECIFIED DIMENSIONS ARE IN INCHES AND INCLUDE CHEMICALLY APPLIED OR PLATED FINISHES		DATE	
DECIMALS	.X ± .05	DATE	1-25-68
FRACTIONS	1/64	DATE	1-25-68
TOLS.	.XX ± .01	DATE	1-25-68
ANGLES	.XXX ± .005	DATE	1-10-68
MATERIAL		DRAWN	GDL
FINISH		SIZE	B

THE TECHNICAL MATERIEL CORP.		DATE	
MAMARONECK, NEW YORK <td>DATE</td> <td>1-25-68</td>		DATE	1-25-68
DIAGRAM, SCHEMATIC		DATE	1-25-68
RF GAIN SERVO LOOP		DATE	1-10-68
CODE	A	ISSUE	Ø
CHG-(14)	BMA	CODE IDENT. NO.	CK1468
MODEL USED ON	APPLICATION	DWG NO.	82679
QTY / UNIT		SCALE	
		SHEET	1
		OF	

NOTICE TO PERSONS RECEIVING THIS DRAWING
 THE TECHNICAL MATERIEL CORPORATION claims proprietary right in the material disclosed hereon. This drawing is issued in confidence for engineering information only and may not be reproduced or used to manufacture anything shown hereon without permission from THE TECHNICAL MATERIEL CORPORATION to the user. This drawing is loaned for mutual assistance and is subject to recall at any time.



UNLESS OTHERWISE SPECIFIED

1. ALL RESISTANCE VALUES ARE IN OHMS 1/2 WATT.
2. ALL DECIMAL NUMBER CAPACITANCE VALUES ARE IN MICROFARADS.
3. ALL WHOLE NUMBER CAPACITANCE VALUES ARE IN PICOFARADS.

REVISIONS

ZONE	LTR	DESCRIPTION	DATE	E.M.N.NO	DRAFT	CHKD	APPD
	X	EXP. RELEASE	2-7-68		G.D.L.		
	X1	REV. & UPDATED	3-7-68		R.G.L.		
		ORIG. RELEASE FOR PROD.	3-15-68		R.G.L.		

REF: CK 1471

REQ'D ITEM	PART NUMBER	DESCRIPTION	SYM.
F. BUDETTI			
LIST OF MATERIAL			
THE TECHNICAL MATERIEL CORP.			
MAMARONECK, NEW YORK			
DIAGRAM, SCHEMATIC			
100mW SENSE			
SIZE	CODE IDENT. NO.	DWG NO.	ISSUE
B	82679	CK 1473	Ø
SCALE	SHEET	OF	

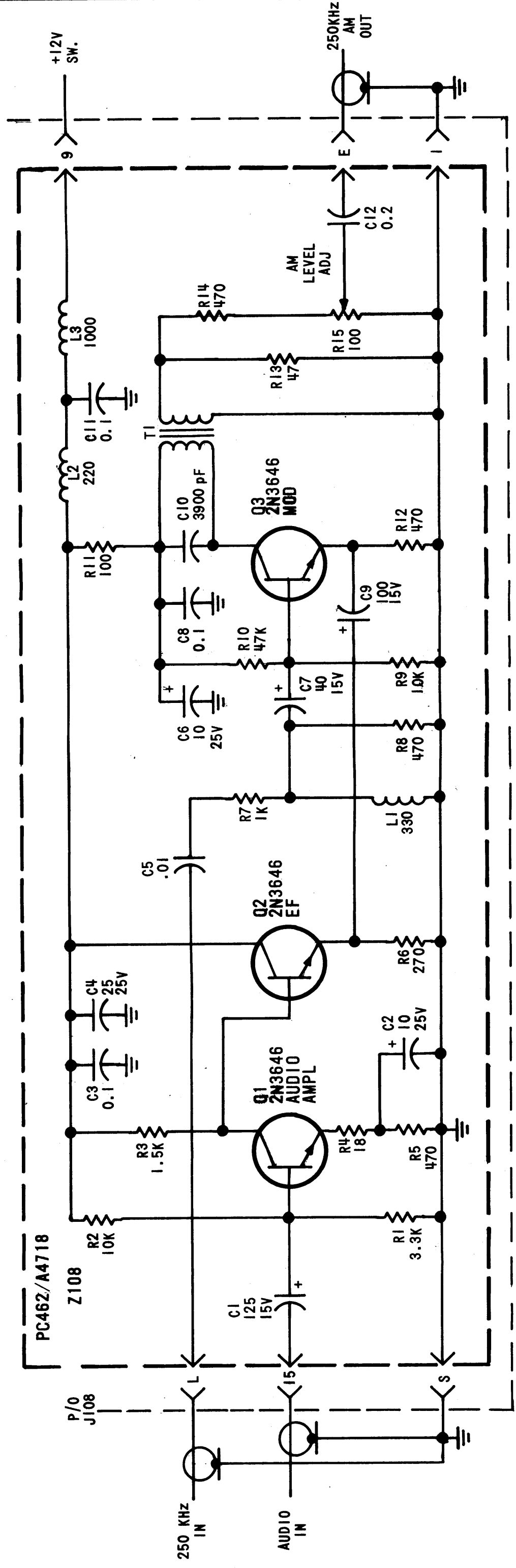
UNLESS OTHERWISE SPECIFIED DIMENSIONS ARE IN INCHES AND INCLUDE CHEMICALLY APPLIED OR PLATED FINISHES	FRACTIONS 1/64
DECIMALS .X ± .05 TOLS. .XX ± .01 ANGLES 0° .30'	
MATERIAL	
FINISH	

QTY / UNIT	MODEL USED ON	ASS'Y NO.
1	SWCD-3K	
APPLICATION		
CODE		

NOTICE TO PERSONS RECEIVING THIS DRAWING
 THE TECHNICAL MATERIEL CORPORATION claims proprietary right in the material disclosed hereon. This drawing is issued in confidence for engineering information only and may not be reproduced or used to manufacture anything shown hereon without permission from THE TECHNICAL MATERIEL CORPORATION to the user. This drawing is loaned for mutual assistance and is subject to recall at any time.

LAST SYMBOLS	MISSING SYMBOLS
C12 L3 Q3 R15 T1	

ZONE	LTR	DESCRIPTION	DATE	E.M.N.NO	DRAFT	CHKD	APPD
	X3	REDRAWN W/D CHANGES	8/1/68		C.V.		
		ORIGINAL RELEASE FOR PROA 9-30-68					



- UNLESS OTHERWISE SPECIFIED:
1. ALL RESISTANCE VALUES ARE IN OHMS, 1/4W.
 2. ALL CAPACITANCE VALUES ARE IN MICROFARADS.
 3. ALL INDUCTANCE VALUES ARE IN MICROHENRIES.

REQ'D ITEM	PART NUMBER	DESCRIPTION	SYM.
0.	POSE	LIST OF MATERIAL	

UNLESS OTHERWISE SPECIFIED DIMENSIONS ARE IN INCHES AND INCLUDE CHEMICALLY APPLIED OR PLATED FINISHES	FINAL APPROVAL <i>[Signature]</i>	DATE 8-1-68
DECIMALS .X ± .05 .XX ± .01 .XXX ± .005	MECH. DES. <i>[Signature]</i>	DATE 8-1-68
FRACTIONS 1/64	ELECT. DES. <i>[Signature]</i>	DATE 8-1-68
TOLS. ANGLES 0°-30'	CHECKED <i>[Signature]</i>	DATE 8-1-68
MATERIAL	DRAWN <i>[Signature]</i>	DATE 8-1-68
FINISH		

THE TECHNICAL MATERIEL CORP. MAMARONECK, NEW YORK	
DIAGRAM, SCHEMATIC AM AMPLIFIER	
SIZE B	CODE IDENT. NO. DWG NO. CK 1497
SCALE	SHEET OF 1

QTY / UNIT	MODEL USED ON	ASSY NO.
1	SME-6	A4718
APPLICATION		
CODE		

NOTICE TO PERSONS RECEIVING THIS DRAWING
THE TECHNICAL MATERIEL CORPORATION claims proprietary right in the material disclosed hereon. This drawing is issued in confidence for engineering information only and may not be reproduced or used to manufacture anything shown hereon without permission from THE TECHNICAL MATERIEL CORPORATION to the user. This drawing is loaned for mutual assistance and is subject to recall at any time.