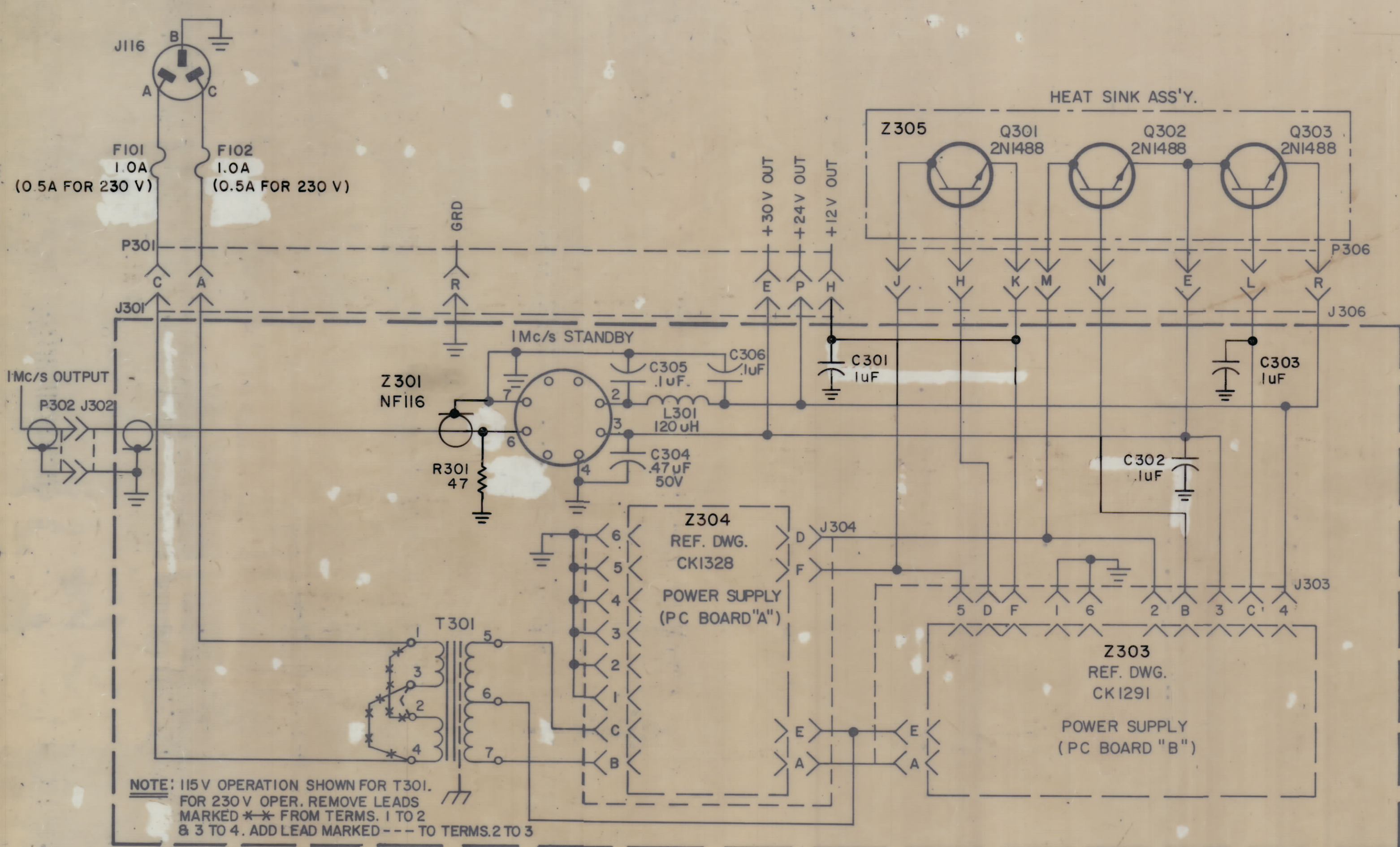


REVISIONS						
ZONE	LTR	DESCRIPTION	DATE	E.M.N.NO	DRAFT	CHKD APPD
	X	EXPERIMENTAL RELEASE	9/5/67		HGA	
	XI	COMPLETELY REVISED	5/1/68		HGA	
		ORIG. RELEASE FOR PROD.	5/2/68		R.G.	
	A	ASS'Y NO. WAS AP138	6/6/68	C.C.	H.S.	



NOTE: 115 V OPERATION SHOWN FOR T301.
 FOR 230 V OPER. REMOVE LEADS
 MARKED * * FROM TERMS. 1 TO 2
 & 3 TO 4. ADD LEAD MARKED --- TO TERMS. 2 TO 3

LAST SYMBOLS	MISSING SYMBOLS
C306	
J306	J305
L301	
P306	P305, P303, P304
R301	
Q303	
T301	
Z305	Z302

I	CHG (-) - 4	API42
I	VOX - 7	API42
QTY / UNIT	MODEL USED ON	ASS'Y NO.
APPLICATION		
CODE		

NOTICE TO PERSONS RECEIVING THIS DRAWING
 THE TECHNICAL MATERIEL CORPORATION claims proprietary right in the material disclosed herein. This drawing is issued in confidence for engineering information only and may not be reproduced or used to manufacture anything shown herein without permission from THE TECHNICAL MATERIEL CORPORATION to the user. This drawing is loaned for mutual assistance and is subject to recall at any time.

UNLESS OTHERWISE SPECIFIED
 DIMENSIONS ARE IN INCHES
 AND INCLUDE CHEMICALLY APPLIED
 OR PLATED FINISHES

TOLERANCES ON

DECIMALS	FRACTIONS
.X ± .05	± 1/64
.XX ± .01	ANGLES
.XXX ± .005	± 0° 30'

QTY. REQ.	ITEM	PART NO.	DESCRIPTION	SYMBOL
O-Pose LIST OF MATERIAL				
THE TECHNICAL MATERIEL CORP. MAMARONECK, NEW YORK				
DIAGRAM, SCHEMATIC POWER SUPPLY				
SIZE	CODE IDENT. NO.	DWG. NO.	ISSUE	
C	82679	CKI453	A	
SCALE	SHEET			OF

CKI453 A B