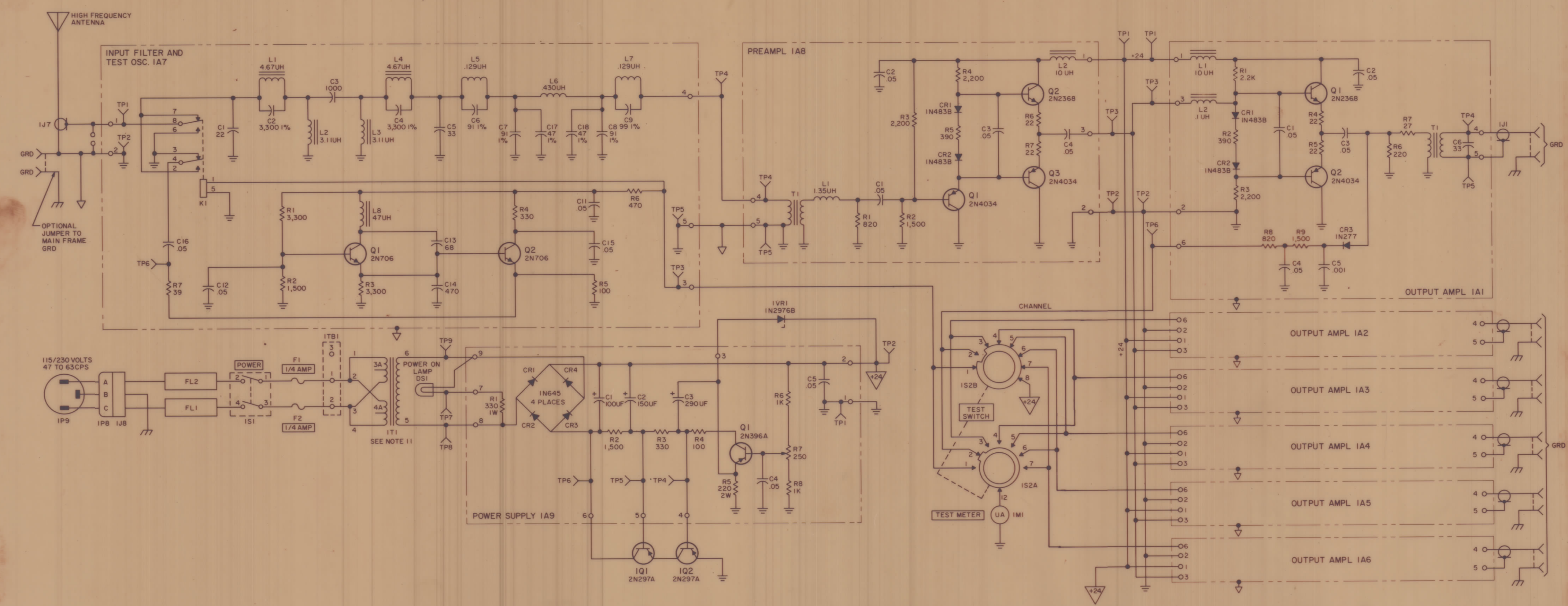
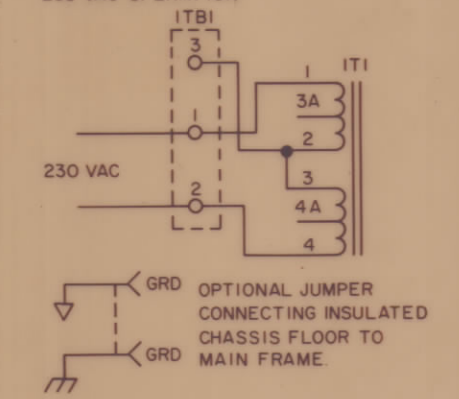


ZONE		LTR		REVISIONS				DATE	E.M.N.O.	DRAFT	CHKD	APPD
				ORIGINAL RELEASE								



- NOTE
- UNLESS OTHERWISE SPECIFIED, RESISTANCES ARE IN OHMS & 1/2W, WHOLE NO CAPACITORS ARE IN UF, DECIMAL CAPACITORS ARE IN UF
 - WAFER SW ARE SHOWN ONE STEP CW FROM EXTREME CW POSITION & ARE VIEWED FROM FRONT. FRONT OF WAFER IS SIDE TOWARD CONTROL KNOB. WAFER NEAREST CONTROL KNOB IS SECTION "A"
 - INDICATES EQUIPMENT MARKING
 - RECEPTACLE VIEWED FROM PIN OR RECP SIDE
 - * INDICATES TERMINAL NO
 - SW IS2 IS FOR TEST CHANNEL SELECTION, 1 IS [] POSITION
2 = CHANNEL [] 5 = CHANNEL []
3 = CHANNEL [] 6 = CHANNEL []
4 = CHANNEL [] 7 = CHANNEL []
 - RELAY VIEWED FROM PIN SIDE:
7 8 1 2
0 0 0 0
6 5 4 3
RED DOT
 - REPRESENTS CONNECTION TO MAIN CHASSIS FRAME
 - REPRESENTS CIRCUIT D.C. COMMON
 - INDICATES THAT CIRCUIT D.C. COMMON IS CONNECTED TO INSULATED CHASSIS FLOOR
 - TRANSFORMER WIRING FOR 230 VAC OPERATION



TM-5985-243-35-18

QTY. REQ.	ITEM	PART NO.	DESCRIPTION	SYMBOL
LIST OF MATERIAL				
THE TECHNICAL MATERIEL CORP. MAMARONECK, NEW YORK				
DIAGRAM, SCHEMATIC MODEL AMC 101				
SCALE		SIZE	CODE IDENT. NO. DWG NO.	ISSUE
		82679	CK1408	

NOTICE TO PERSONS RECEIVING THIS DRAWING
 THE TECHNICAL MATERIEL CORPORATION claims proprietary right in the material disclosed hereon. This drawing is issued in confidence for engineering information only and may not be reproduced or used to manufacture anything shown hereon without permission from THE TECHNICAL MATERIEL CORPORATION to the user. This drawing is loaned for mutual assistance and is subject to recall at any time.