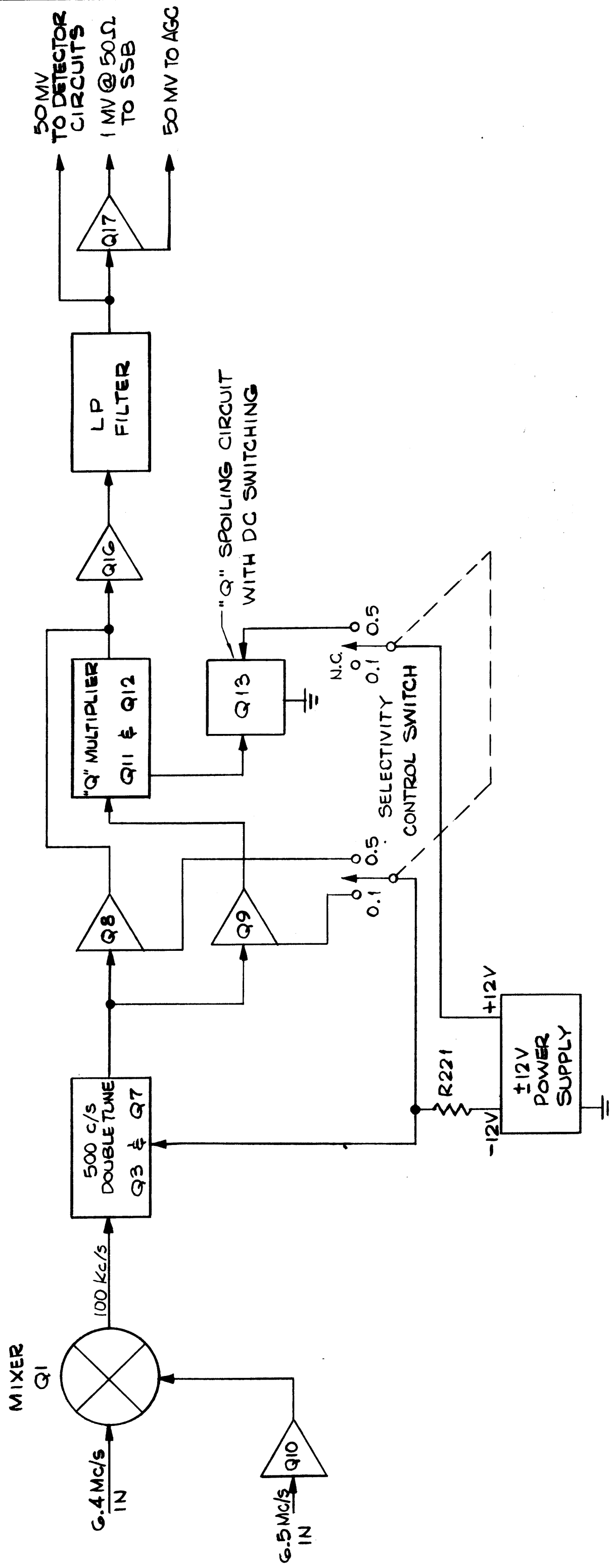


DC SWITCHED BUFFER AMPLIFIERS &  
CONSTANT OUTPUT VOLTAGE CONTROLS



REVISIONS				
ZONE	LTR	DESCRIPTION	DATE	E.M.N. NO
	X	EXPERIMENTAL RELEASE	6/16/67	-
	Q	ORIGINAL RELEASE	8/4/67	Q

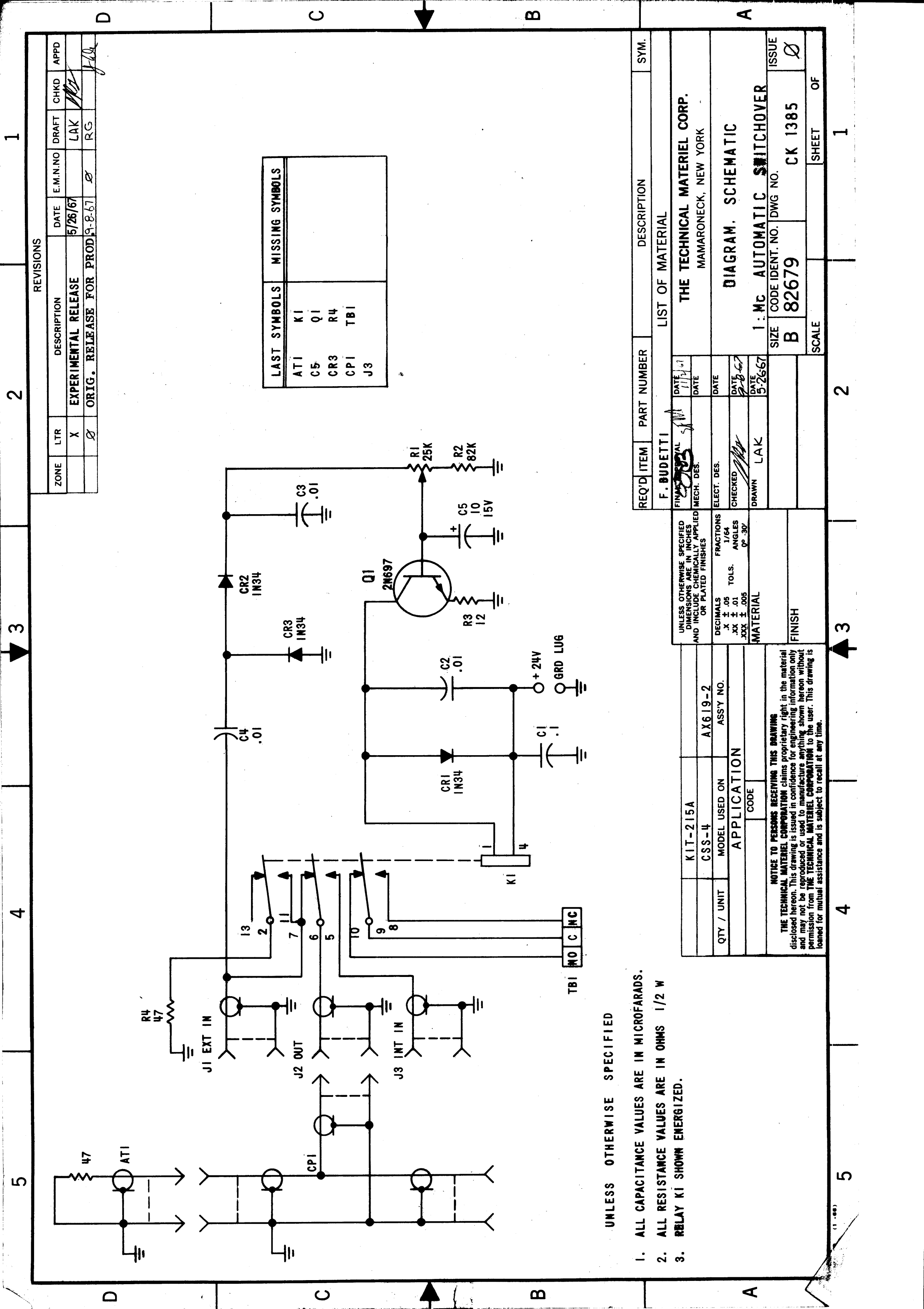
REQ'D ITEM	PART NUMBER	DESCRIPTION	SYM.
A-MARTINENGO LIST OF MATERIAL			
THE TECHNICAL MATERIEL CORP. MAMARONECK, NEW YORK			
100 KC/S IF BLOCK DIAGRAM			
SIZE	CODE IDENT. NO.	DWG NO.	ISSUE
B	82679	CK1377	Q
SCALE	waf		SHEET OF
			1

QTY / UNIT	MODEL USED ON	ASS'Y NO.
VLRC-1		
APPLICATION		
CODE		
MATERIAL		
FINISH		

UNLESS OTHERWISE SPECIFIED DIMENSIONS ARE IN INCHES AND INCLUDE CHEMICALLY APPLIED OR PLATED FINISHES

DECIMALS FRACTIONS  
 .X ± .05 1/64  
 .XX ± .01 ANGLES  
 .XXX ± .005 0°-30'

NOTICE TO PERSONS RECEIVING THIS DRAWING  
 THE TECHNICAL MATERIEL CORPORATION claims proprietary right in the material disclosed hereon. This drawing is issued in confidence for engineering information only and may not be reproduced or used to manufacture anything shown hereon without permission from THE TECHNICAL MATERIEL CORPORATION to the user. This drawing is loaned for mutual assistance and is subject to recall at any time.



LAST SYMBOLS	MISSING SYMBOLS
AT1	KI
C5	Q1
CR3	R4
CPI	TBI
J3	

ZONE	LTR	DESCRIPTION	DATE	E.M.N.NO	DRAFT	CHKD	APPD
	X	EXPERIMENTAL RELEASE	5/26/67		LAK		
	Ø	ORIG. RELEASE FOR PROD.	9-8-67	Ø	RG		jak

REVISIONS

1. ALL CAPACITANCE VALUES ARE IN MICROFARADS.
2. ALL RESISTANCE VALUES ARE IN OHMS 1/2 W
3. RELAY KI SHOWN ENERGIZED.

REQ'D ITEM	PART NUMBER	DESCRIPTION	SYM.
F. BUDETTI			
LIST OF MATERIAL			
THE TECHNICAL MATERIEL CORP. MAMARONECK, NEW YORK			
DIAGRAM. SCHEMATIC			
1: MC AUTOMATIC SWITCHOVER			
SIZE	CODE IDENT. NO.	DWG NO.	ISSUE
B	82679	CK 1385	Ø
SCALE	SHEET	OF	

KIT-215A		AX619-2	
CSS-4		MODEL USED ON	
QTY / UNIT		ASS'Y NO.	
APPLICATION			
CODE		MATERIAL	
FINISH			
<p>UNLESS OTHERWISE SPECIFIED DIMENSIONS ARE IN INCHES AND INCLUDE CHEMICALLY APPLIED OR PLATED FINISHES</p> <p>DECIMALS FRACTIONS  .X ± .05 TOLS. 1/64  .XX ± .01 ANGLES 0°-30'  .XXX ± .005</p>			
<p>NOTICE TO PERSONS RECEIVING THIS DRAWING</p> <p>THE TECHNICAL MATERIEL CORPORATION claims proprietary right in the material disclosed hereon. This drawing is issued in confidence for engineering information only and may not be reproduced or used to manufacture anything shown hereon without permission from THE TECHNICAL MATERIEL CORPORATION to the user. This drawing is loaned for mutual assistance and is subject to recall at any time.</p>			