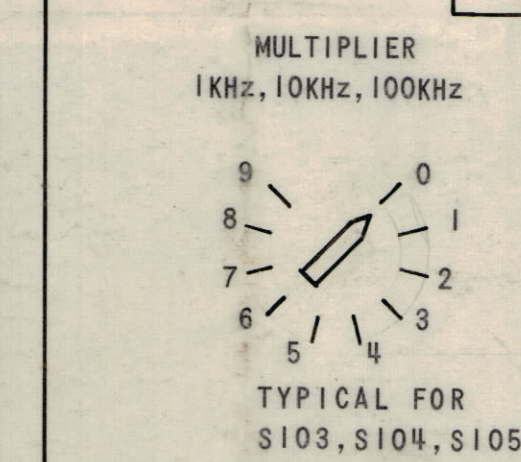
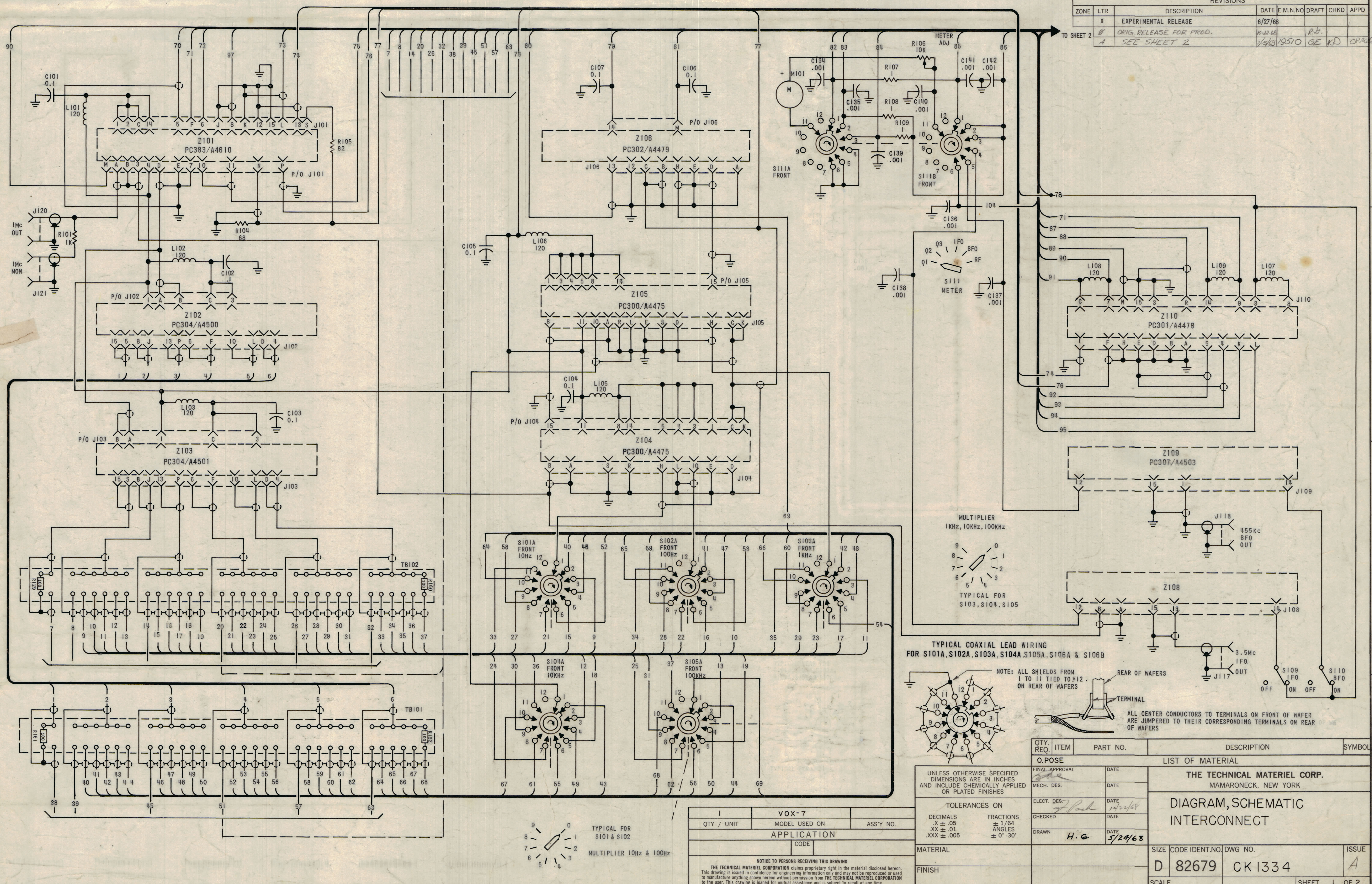
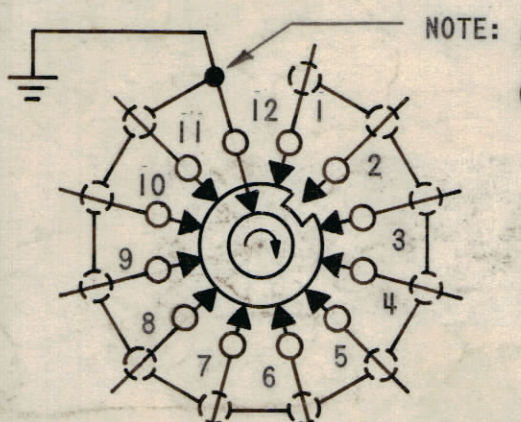


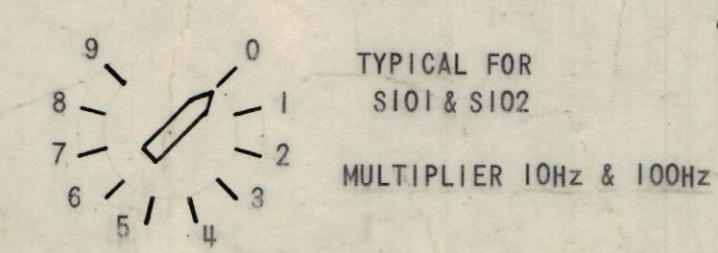
REVISIONS						
ZONE	LTR	DESCRIPTION	DATE	E.M.N.O.	DRAFT	CHKD
X		EXPERIMENTAL RELEASE	6/27/68			
B		ORIG. RELEASE FOR PROD.	10-23-68			R.B.
A		SEE SHEET 2	7/4/69	19510	GE	KID



TYPICAL COAXIAL LEAD WIRING FOR S101A, S102A, S103A, S104A, S105A, S106A & S106B



QTY. REQ.	ITEM	PART NO.	DESCRIPTION	SYMBOL
O. POSE				
LIST OF MATERIAL				
THE TECHNICAL MATERIEL CORP. MAMARONECK, NEW YORK				
DIAGRAM, SCHEMATIC INTERCONNECT				
UNLESS OTHERWISE SPECIFIED DIMENSIONS ARE IN INCHES AND INCLUDE CHEMICALLY APPLIED OR PLATED FINISHES		TOLERANCES ON		
DECIMALS	.X ± .05	FRACTIONS	± 1/64	
XX ± .01		ANGLES	± 0° - 30'	
XXX ± .005				
FINAL APPROVAL		DATE		
MECH. DES.		DATE		
ELECT. DES.		DATE		
CHECKED		DATE		
DRAWN		DATE		
MATERIAL		DATE		
FINISH		DATE		
QTY. / UNIT		ASS'Y. NO.		
CODE		APPLICATION		
NOTICE TO PERSONS RECEIVING THIS DRAWING				
THE TECHNICAL MATERIEL CORPORATION claims proprietary right in the material disclosed herein. This drawing is issued in confidence for engineering information only and may not be reproduced or used to manufacture anything shown hereon without permission from THE TECHNICAL MATERIEL CORPORATION to the user. This drawing is loaned for mutual assistance and is subject to recall at any time.				
SIZE	CODE IDENT. NO.	DWG. NO.	ISSUE	
D	82679	CK I334	A	
SCALE				
SHEET 1 OF 2				



VOX-7		
QTY. / UNIT	MODEL USED ON	ASS'Y. NO.
APPLICATION		
CODE		