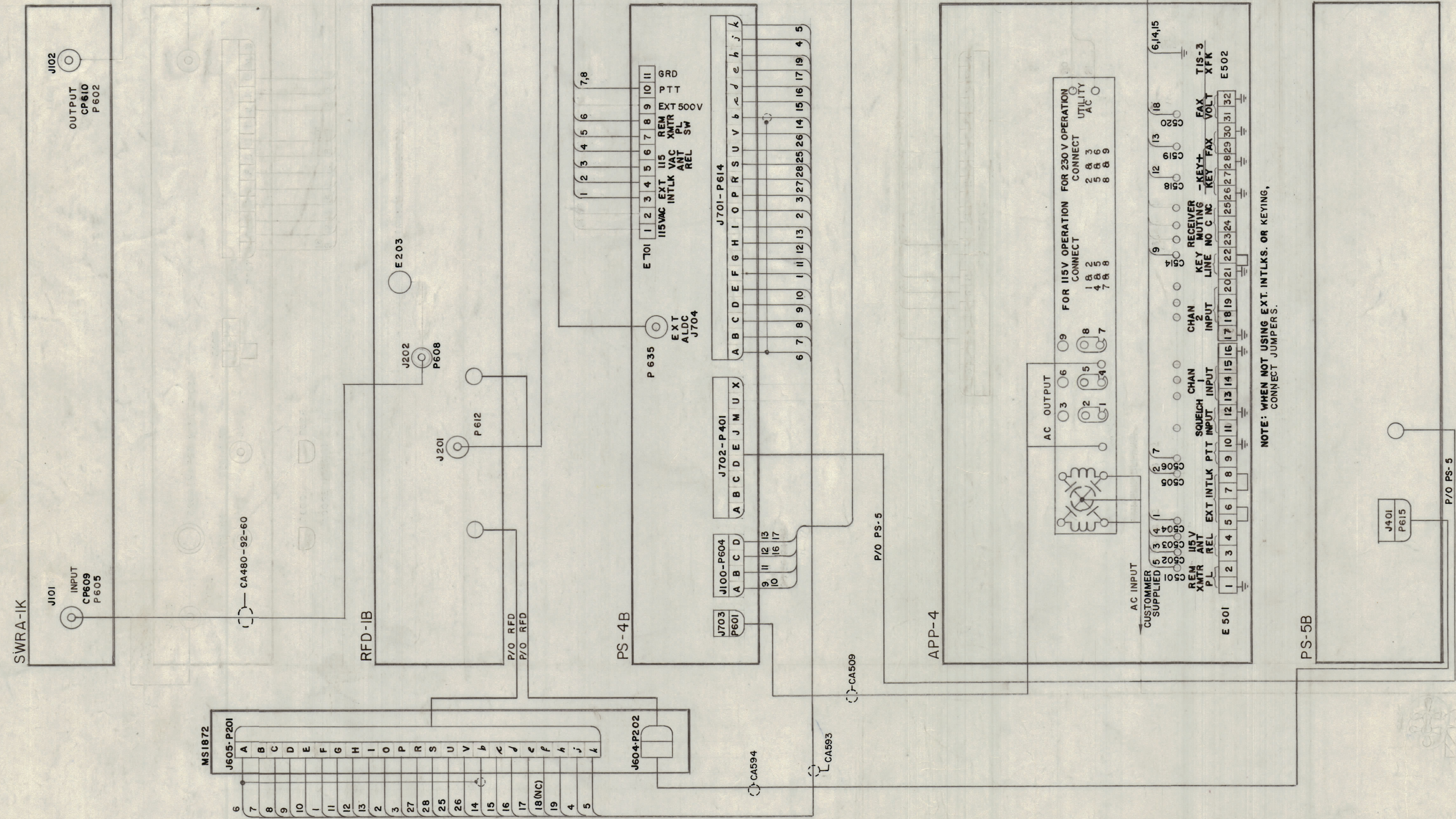


THE TECHNICAL MATERIEL CORP.
MAMARONECK, NEW YORK
MODEL SET - IKPA2 CK1295-A



REVISIONS							
ZONE	LTR	DESCRIPTION	DATE	E.M.N.NO	DRAFT	CHKD	APPD
X		EXP. RELEASE					
X1		ADDED CA480-92-60 & DELETED LINE BETWEEN J202 & E203	3/10/67		RME		
		ORIGINAL RELEASE FOR PRODUCTION	4-6-67		CV		
A		J101 WAS J304; J102 WAS J305; C A35 ADDED TO APP-4; E501 & E502 WAS E502	4/27/67	10151	WHB		FB

1	SBT-1KPA2	RAK-17E1
QTY / UNIT	MODEL USED ON	ASS'Y NO.
APPLICATION		
CODE		

QTY. REQ.	ITEM	PART NO.	DESCRIPTION	SYMBOL
	LIST OF MATERIAL			
	UNLESS OTHERWISE SPECIFIED DIMENSIONS ARE IN INCHES AND INCLUDE CHEMICALLY APPLIED OR PLATED FINISHES			
	TOLERANCES ON			
	DECIMALS	FRACTIONS		
	.XX ± .05	± 1/64		
	.XX ± .01	ANGLES		
	.XXX ± .005	± 0° -30'		
MATERIAL				
FINISH				

THE TECHNICAL MATERIEL CORP. MAMARONECK, NEW YORK	
DIAGRAM, WIRING, PA	
SIZE	CODE IDENT. NO. / DWG NO.
D	82679 CK1295
SCALE	SHEET OF
	ISSUE
	A

NOTICE TO PERSONS RECEIVING THIS DRAWING
THE TECHNICAL MATERIEL CORPORATION claims proprietary right in the material disclosed herein. This drawing is issued in confidence for engineering information only and may not be reproduced or used to manufacture anything shown hereon without permission from THE TECHNICAL MATERIEL CORPORATION to the user. This drawing is loaned for mutual assistance and is subject to recall at any time.