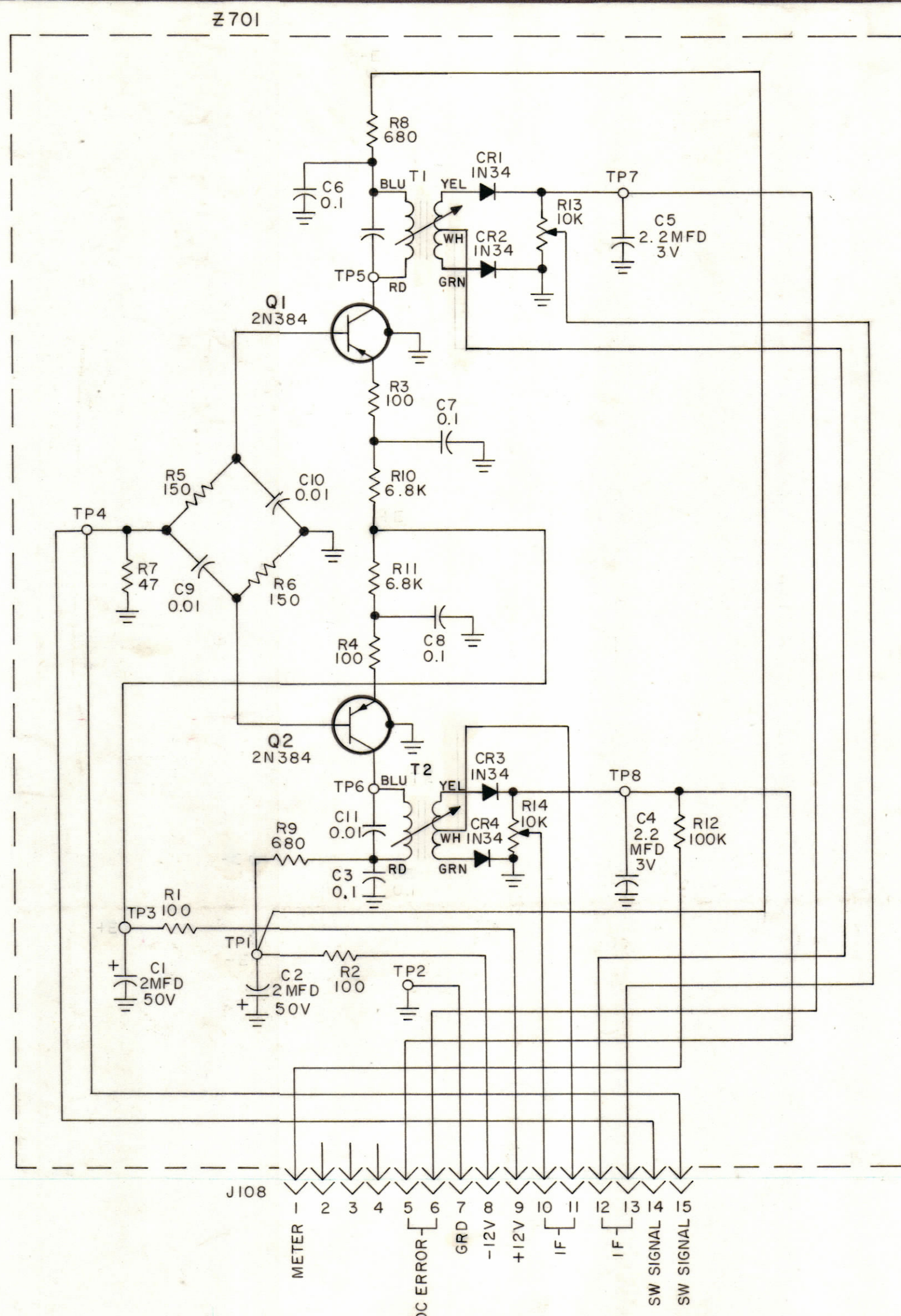


REVISIONS

SYM	ZONE	DESCRIPTION	DATE	E.M.N. NO.	DRAFT	CHKD	APPD
X		EXPERIMENTAL RELEASE	11-23-66	X	RME		
Ø		ORIGINAL RELEASE FOR PRODUCTION	12/2/66		CV		



LAST SYMBOLS

- C712
- CR702
- Q702
- R714
- T702
- TP708

NOTE ALL SYMBOLS 700 SERIES

UNLESS OTHERWISE SPECIFIED  
ALL RESISTOR VALUES ARE IN OHMS, 1/2 WATT.

REF. CK1254  
REF. PC133

QTY REQ	ITEM	PART NO.	DESCRIPTION	SYMBOL
BILL OF MATERIAL				
FINAL APPROVAL <i>[Signature]</i> DATE 12/1/66 MECH. DES. DATE ELECT. DES. DATE			THE TECHNICAL MATERIEL CORP. MAMARONECK, NEW YORK	
CHECKED J.L. DATE 11/28/66 DRAWN DWAIN SERV. DATE			DIAGRAM, SCHEMATIC PHASE DETECTOR	
MATERIAL FINISH			CODE 82679	SIZE C
			DWG. NO. CK 1255	ISSUE Ø
			SCALE	SHEET OF

MAXIMUM ALLOWABLE TOLERANCES HAVE BEEN DETERMINED AND ANY DEVIATIONS WILL BE CAUSE FOR REJECTION.

I	LFC A-1	A3721
QTY/UNIT	MODEL USED ON	ASS'Y NO.