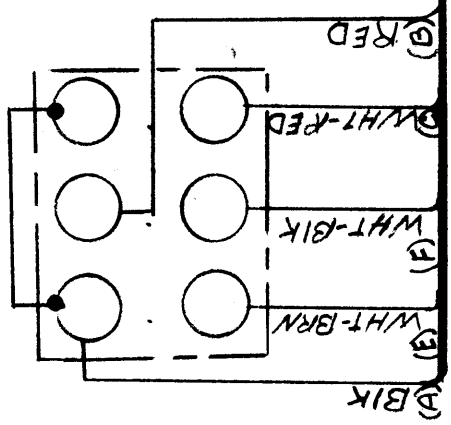


REVISIONS

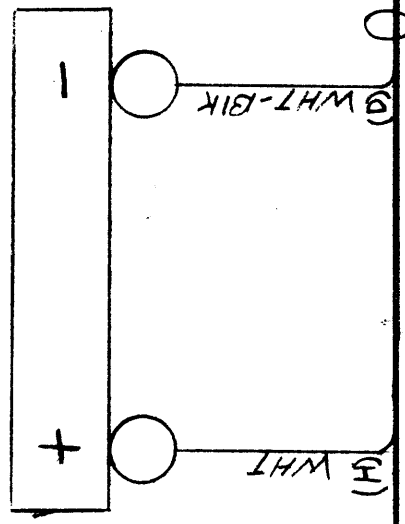
SYM	DESCRIPTION	DATE	E.M.N. NO.	DRAFT	CHKD	APPD
Ø	ORIG. RELEASE FOR PROD.	11/27/68	Ø	R.G.		

Ø CK1121

S1

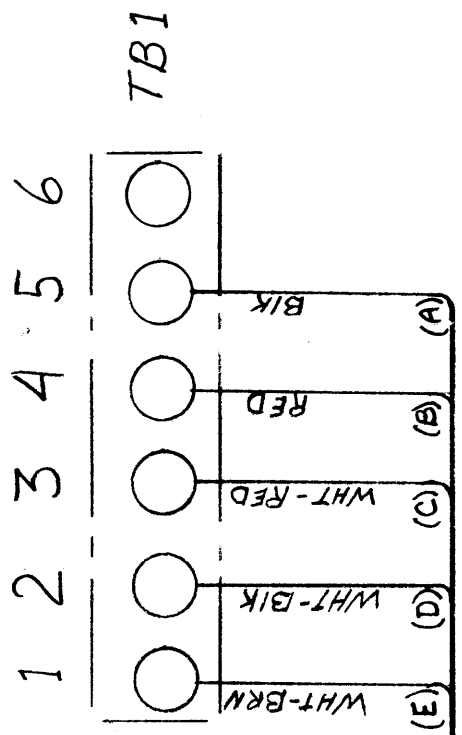
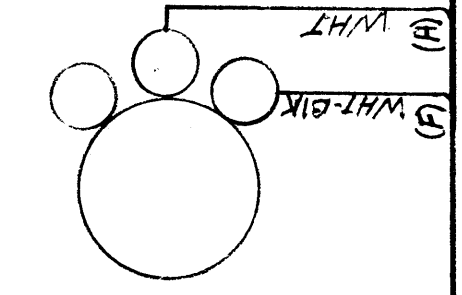


M1



CA1235

R1



NOTES

THE CONTENTS OF THIS DRAWING ARE THE EXCLUSIVE PROPERTY OF THE TECHNICAL MATERIEL CORP. ITS UNAUTHORIZED USE OR REPRODUCTION IN WHOLE OR IN PART IS STRICTLY FORBIDDEN.

A7628

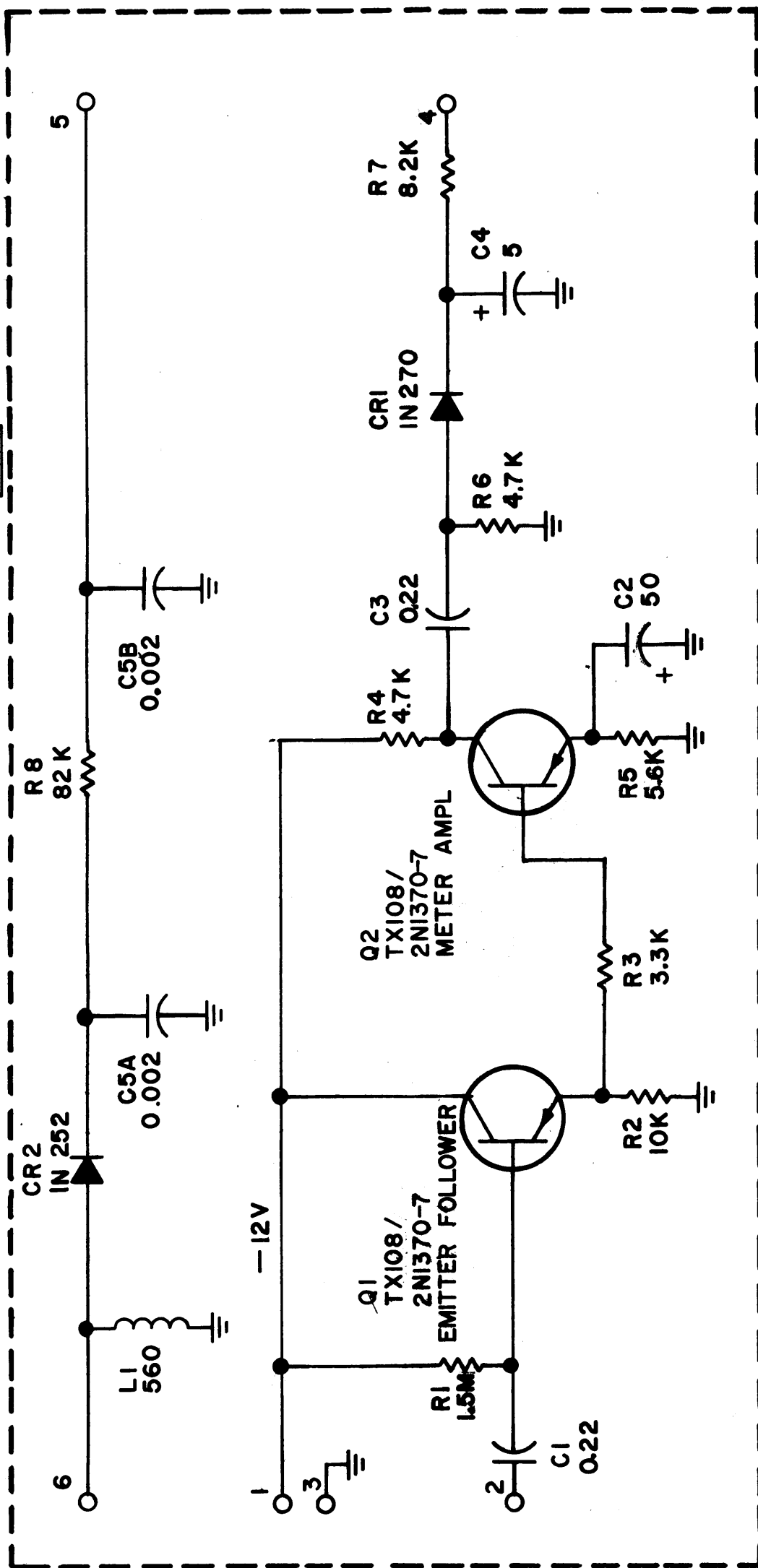
QTY./UNIT	MODEL USED ON	ASBY. NO.
SCALE	CODE	

REQ'D.	ITEM	PART NUMBER	DESCRIPTION	SYMBOL
	EATON		LIST OF MATERIAL	
MATERIAL		THE TECHNICAL MATERIEL CORP. MAMARONECK, NEW YORK		
FINISH		TITLE DIAGRAM, WIRING		
UNLESS OTHERWISE SPECIFIED DIMENSIONS ARE IN INCHES AND INCLUDE CHEMICALLY APPLIED OR PLATED FINISHES		DRAWN W. McLEAN	DATE 4/27/66	FINAL APPROVAL SAM
DECIMALS .X ± .05 .XX ± .01 .XXX ± .005		CHECKED	DATE	DATE
FRACTIONS ± 1/64 ANGLES ± 0° 30'		ELECT. DES.	DATE	DATE
TOLERANCES		MECH. DES. W. McLean	DATE 4/27/66	SHEET CK1121
				REV. LTR.

REVISIONS

SYM	DESCRIPTION	DATE	E.M.N. NO.	DRAFT	CHKD	APPD
X	EXPERIMENTAL RELEASE	8-19-66	X	RME	JG	
Ø	ORIGINAL RELEASE FOR PRODUCTION	2-16-67		L.P.K.		

CK1169



LAST SYMBOLS	MISSING SYMBOLS
CR 2 R 8 L 1 C 5 B Q 2	

UNLESS OTHERWISE SPECIFIED  
ALL RESISTANCE VALUES ARE IN OHMS, 1/2 WATT.  
ALL INDUCTANCE VALUES ARE IN MICROHENRIES.

QTY./UNIT	MODEL USED ON	ASBY. NO.
1	SMEA-1	A 3714
SCALE	CODE	

THE CONTENTS OF THIS DRAWING ARE THE EXCLUSIVE PROPERTY OF THE TECHNICAL MATERIEL CORP. ITS UNAUTHORIZED USE OR REPRODUCTION IN WHOLE OR IN PART IS STRICTLY FORBIDDEN.

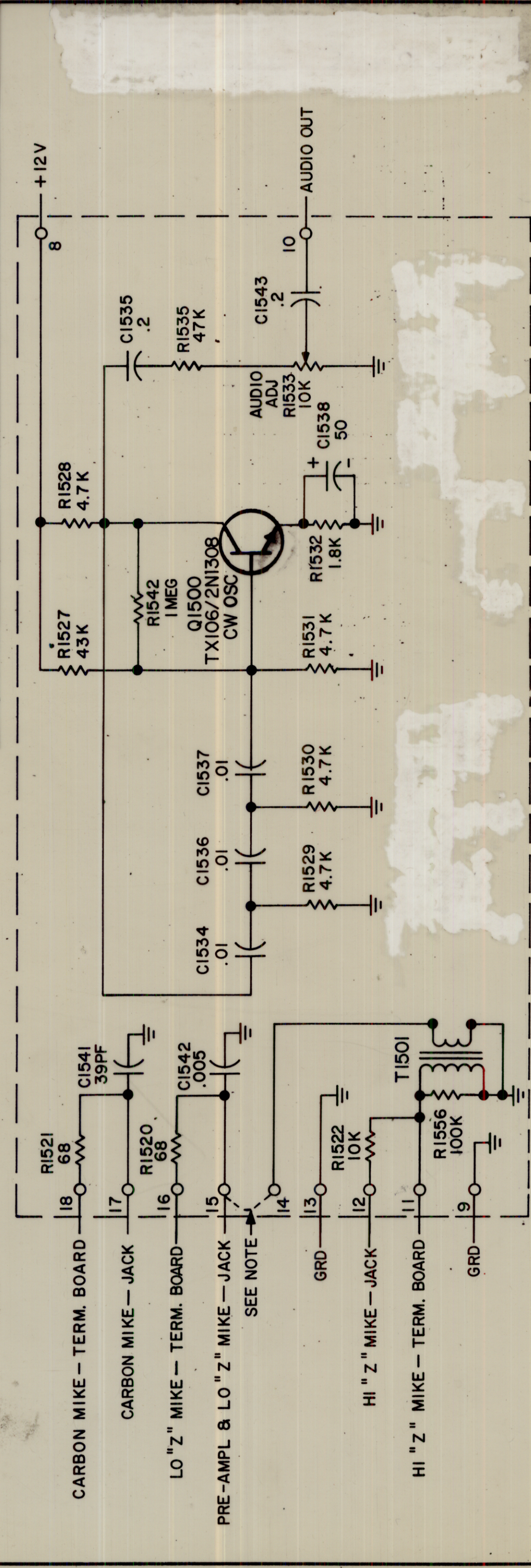
NOTES

REQ'D.	ITEM	PART NUMBER	DESCRIPTION	SYMBOL
	POSE		LIST OF MATERIAL	
	MATERIAL		THE TECHNICAL MATERIEL CORP. MAMARONECK, NEW YORK	
	FINISH		DIAGRAM, SCHEMATIC P/C METER BOARD	
			DRAWN RME	DATE 8-4-66
			CHECKED	DATE 2/15/67
			ELECT. DES.	DATE
			MECH. DES.	DATE
			SHEET	REV. LTR.



REVISIONS		DESCRIPTION		DATE	E.M.N. NO.	DRAFT	CHKD	APPD
SYM								
X		EXPERIMENTAL RELEASE		8-25-66		HLA		
		ORIGINAL RELEASE FOR PRODUCTION		2-16-67		LAK		

LAST SYMBOLS	MISSING SYMBOLS
CI543 QI500 RI556 TI501	CI501 THRU CI533 CI539, CI540 RI501 THRU RI519 RI523 THRU RI526 RI534 THRU RI541 RI543 THRU RI555



REQ'D.	ITEM	PART NUMBER	DESCRIPTION	SYMBOL
0	POSE			
	MATERIAL			
	FINISH			

LIST OF MATERIAL		THE TECHNICAL MATERIEL CORP.	
		MAMARONECK, NEW YORK	
		DIAGRAM SCHEMATIC,	
		CW OSC P/C BOARD	
DRAWN	H. AUSTIN	DATE	8-25-66
CHECKED		DATE	
ELECT. DES.		DATE	
MECH. DES.		DATE	
		FINAL APPROVAL	
			2/15/67
			CK1172
		SHEET	
		REV. LTR.	

Q.T.Y./UNIT	SCALE	MODEL USED ON	ASSY. NO.
1		SMEA-1	A3278-5

UNLESS OTHERWISE SPECIFIED  
ALL RESISTANCE VALUES ARE IN OHMS, 1/2 W.  
ALL CAPACITANCE VALUES ARE IN MICROFARADS.

TERMINALS 14 & 15 ARE JUMPERED  
WHEN A HIGH IMPEDANCE MICROPHONE  
IS TO BE USED. JUMPER IS OMITTED  
FOR LOW IMPEDANCE OR CARBON  
MICROPHONE.

NOTES

THE CONTENTS OF THIS DRAWING ARE THE EXCLUSIVE PROPERTY  
OF THE TECHNICAL MATERIEL CORP. ITS UNAUTHORIZED USE OR  
REPRODUCTION IN WHOLE OR IN PART IS STRICTLY FORBIDDEN.

DECIMALS  
X ± .05  
.XX ± .01  
.XXX ± .005

FRACTIONS  
± 1/64  
ANGLES  
± 0° 30'

TOLERANCES

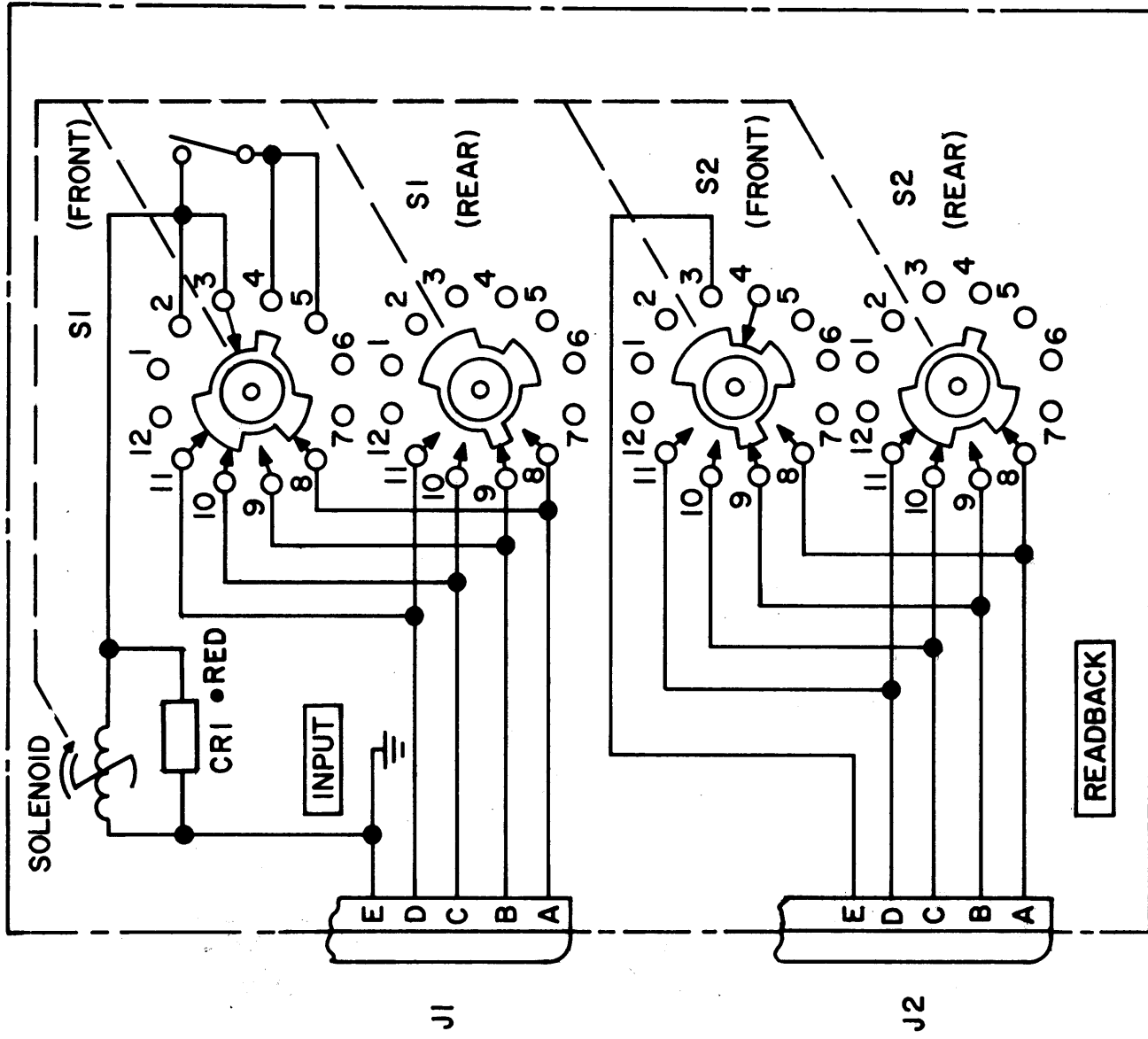
UNLESS OTHERWISE SPECIFIED  
DIMENSIONS ARE IN INCHES AND INCLUDE  
CHEMICALLY APPLIED OR PLATED FINISHES



REVISIONS

SYM	DESCRIPTION	DATE	E.M.N. NO.	DRAFT	CHKD	APPD
X	EXPERIMENTAL RELEASE	8-19-66	-M-	JC		
Ø	ORIGINAL RELEASE FOR PRODUCTION	2-16-67		LAK		

CK1186



QTY./UNIT	SCALE	SMEB-1	MODEL USED ON	ASBY. NO.
				AX 541

THE CONTENTS OF THIS DRAWING ARE THE EXCLUSIVE PROPERTY OF THE TECHNICAL MATERIEL CORP. ITS UNAUTHORIZED USE OR REPRODUCTION IN WHOLE OR IN PART IS STRICTLY FORBIDDEN.

NOTES

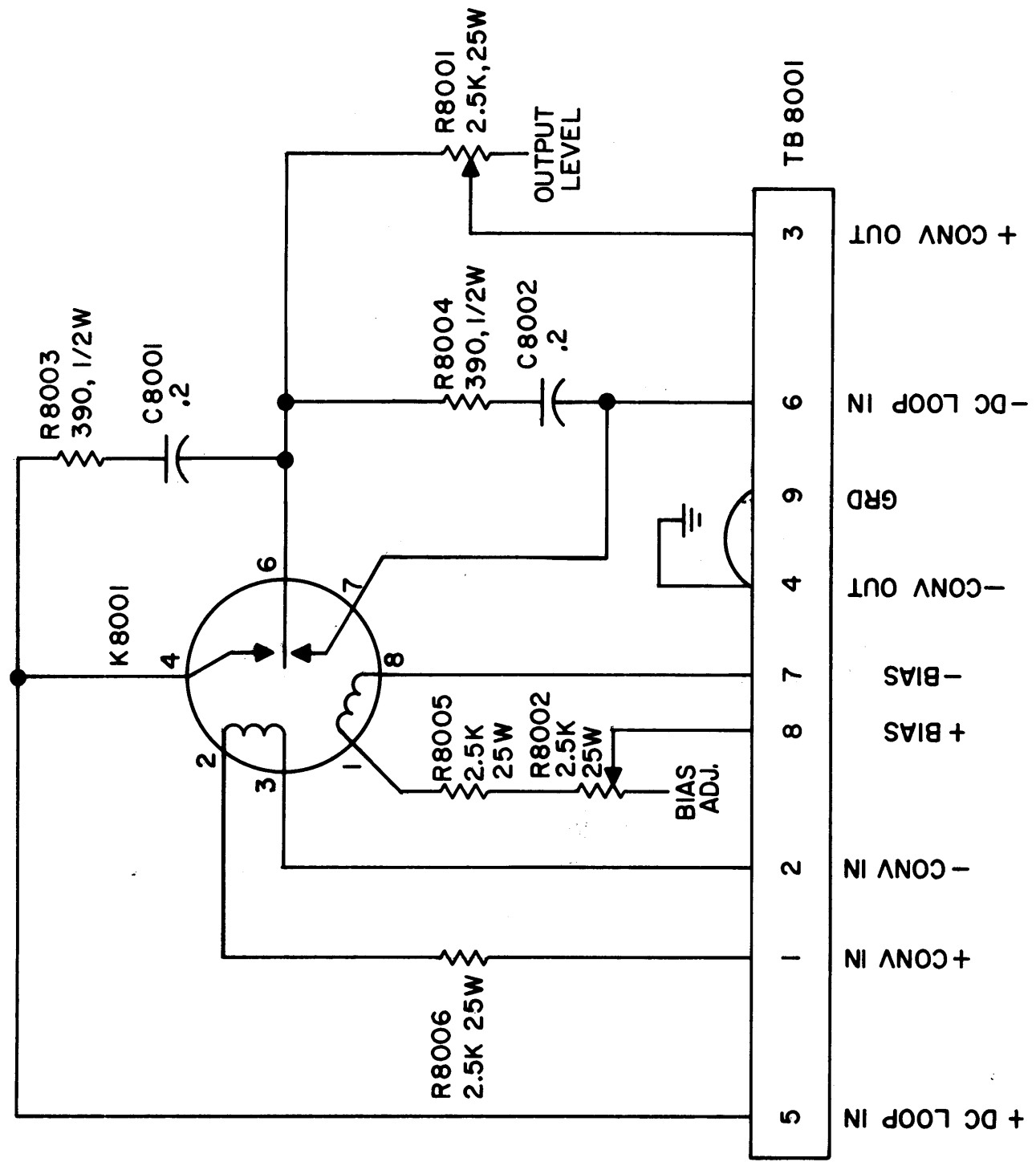
REQ'D.	ITEM	PART NUMBER	DESCRIPTION	SYMBOL
	Pose		LIST OF MATERIAL	
	MATERIAL		THE TECHNICAL MATERIEL CORP. MAMARONECK, NEW YORK	
	FINISH		DIAGRAM, SCHEMATIC	
			UNLESS OTHERWISE SPECIFIED DIMENSIONS ARE IN INCHES AND INCLUDE CHEMICALLY APPLIED OR PLATED FINISHES	
			DECIMALS .1 ± .05 .01 ± .01 .001 ± .001	
			FRACTIONS ± 1/64 AN LB ± 0° 30'	
			TOLERANCES ± .005	
			DRAWN J B	DATE 8-15-66
			CHECKED H. H.	DATE 1-17-67
			ELECT. DES. H. H.	DATE 2/15/67
			MECH. DES.	DATE
			CK1186	REV. LTR.



REVISIONS

SYM	DESCRIPTION	DATE	E.M.N. NO.	DRAFT	CHKD	APPD
X1	SCHEMATIC CLARIFIED R8006 & R8005 WERE 20W	11.17.66	4	440		
Ø	ORIGINAL RELEASE FOR PRODUCTION	12/2/66	Ø	CY		

Ø CK-1189



REQ'D.	ITEM	PART NUMBER	DESCRIPTION	SYMBOL
	STURMER		LIST OF MATERIAL	
	MATERIAL		THE TECHNICAL MATERIEL CORP. MAMARONECK, NEW YORK	
	FINISH		DIAGRAM SCHEMATIC RELAY ASSEMBLY (AR-181)	
			DRAWN C.E.D.	DATE 8-23-66
			CHECKED <i>[Signature]</i>	DATE 8-26-66
			ELECT. DESG. <i>[Signature]</i>	DATE 12-1-66
			MECH. DESG.	DATE
			FINAL APPROV. <i>[Signature]</i>	DATE 12/2/66
			C.K-1189	Ø
			SHEET	REV. LTR.

QTY./UNIT	MODEL USED ON	ASSY. NO.
	AR181	
SCALE	CODE	

UNLESS OTHERWISE SPECIFIED  
DIMENSIONS ARE IN INCHES AND INCLUDE  
CHEMICALLY APPLIED OR PLATED FINISHES

DECIMALS  
.X ± .05  
.XX ± .01  
.XXX ± .005

FRACTIONAL ANGLES  
± 1/64  
± 0° 30'

TOLERANCES  
± 0° 30'

THE CONTENTS OF THIS DRAWING ARE THE EXCLUSIVE PROPERTY  
OF THE TECHNICAL MATERIEL CORP. ITS UNAUTHORIZED USE OR  
REPRODUCTION IN WHOLE OR IN PART IS STRICTLY FORBIDDEN.

NOTES