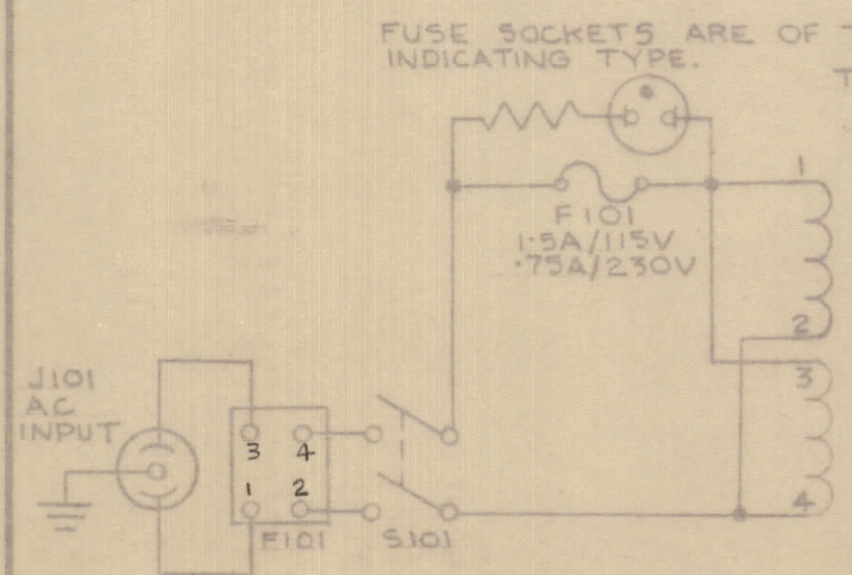
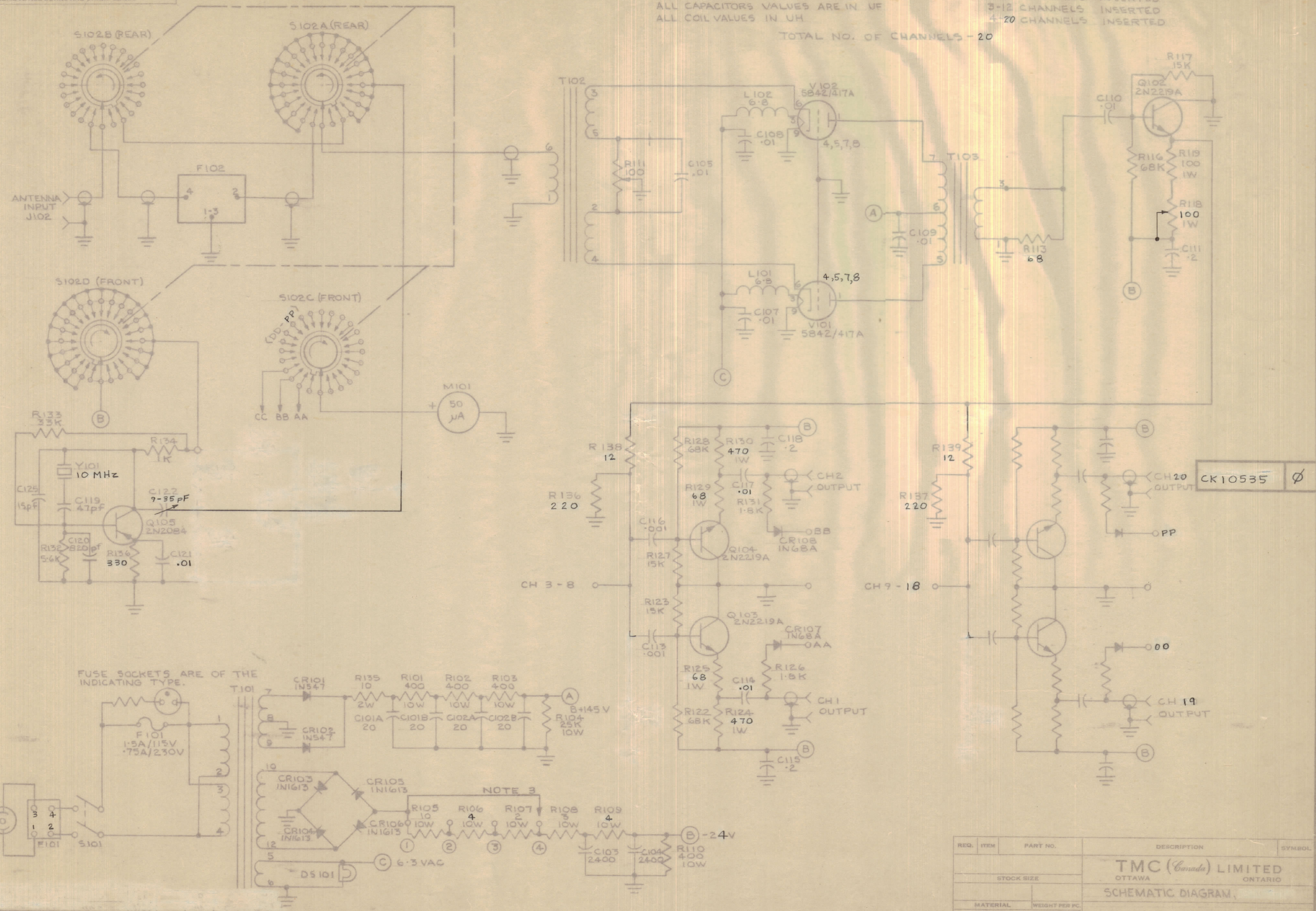


IF IT IS FOUND DESIRABLE TO CHANGE ANY TOLERANCE OR OTHER DETAIL SPECIFIED ON THIS DRAWING NOTIFY THE PURCHASER PROMPTLY.
 MAXIMUM ALLOWABLE TOLERANCES HAVE BEEN DETERMINED AND DEVIATIONS WILL BE CAUSE FOR REJECTION. REMOVE ALL BURRS AND SHARP EDGES

NOTES 1. S102 SHOWN IN "FILTER OUT" POSITION.
 2. UNLESS OTHERWISE SPECIFIED:
 ALL RESISTORS ARE 1/2 WATT.
 ALL CAPACITORS VALUES ARE IN UF
 ALL COIL VALUES IN UH
 3. POSITION POWER SUPPLY JUMPER THUS
 POS. 1-4 CHANNELS INSERTED
 2-8 CHANNELS INSERTED
 3-12 CHANNELS INSERTED
 4-20 CHANNELS INSERTED
 TOTAL NO. OF CHANNELS - 20



REL. TO PROD.	APRIL	GAM
ISSUE ITEM	CHANGED FROM	DATE
TOLERANCES		
SCALE:		
DRILL, PUNCH, COMMERCIAL STOCK SIZES AND MANUFACTURERS TOLERANCES ARE NOT INCLUDED.		

AMC 20-20A	PROJECT NO.	APR 28 / 67
MODEL	ASS'Y. NO.	DATE
USED ON		

REQ. ITEM	PART NO.	DESCRIPTION	SYMBOL
TMC (Canada) LIMITED OTTAWA ONTARIO			
SCHEMATIC DIAGRAM,			
GAM			
DRAWN		ELEC. DES. APP.	
CHECKED		FINAL APPROVAL	
CK10535			