

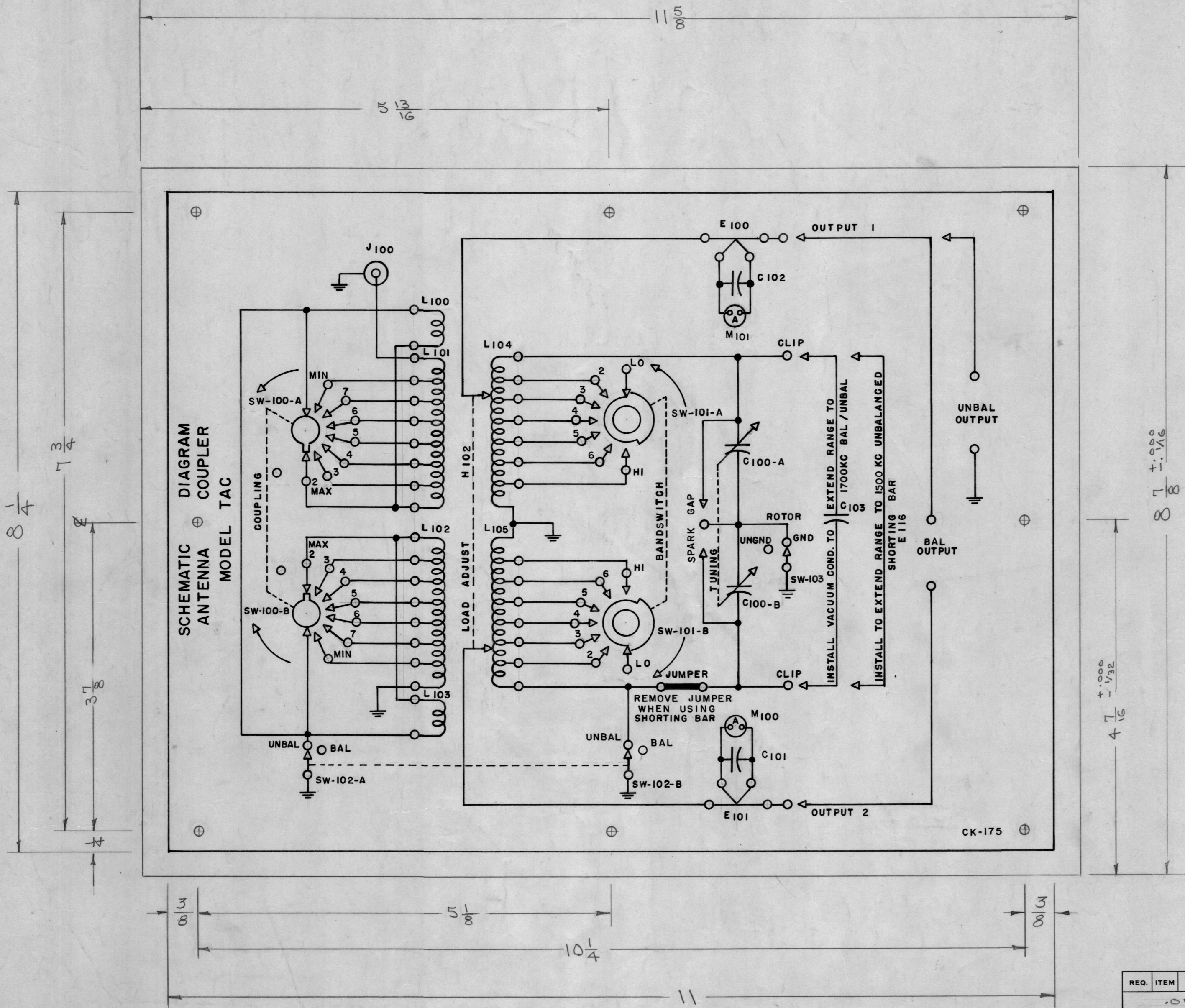
IF IT IS FOUND DESIRABLE TO CHANGE ANY TOLERANCE OR OTHER DETAIL SPECIFIED ON THIS DRAWING NOTIFY THE PURCHASER PROMPTLY.

MAXIMUM ALLOWABLE TOLERANCES HAVE BEEN DETERMINED AND DEVIATIONS WILL BE CAUSE FOR REJECTION. REMOVE ALL BURRS AND SHARP EDGES

NOTICE TO PERSONS RECEIVING THIS DRAWING

THE TECHNICAL MATERIEL CORPORATION claims proprietary right in the material disclosed hereon. This drawing is issued in confidence for engineering information only and may not be reproduced or used to manufacture anything shown hereon without permission from THE TECHNICAL MATERIEL CORPORATION to the user. This drawing is loaned for mutual assistance and is subject to recall at any time.

Property of:  
THE TECHNICAL MATERIEL CORPORATION  
MAMARONECK, NEW YORK



CK-175 C

NOTE:  
ALL HOLES 9/64 D

C	1	3/8 DIM. WAS 1/4	8/23/61	5472	wh	Ed	SM
B	1	M101 WAS M100 (GR)	9-14-60	2965	cs	He	Wde
A	1	MAX STAMPING ON SW-100-A AND SW-100-B RELOCATED	11/6/59	1526	J.C.B.		
+	+	REDRAWN - NO REVISION	6/30/64		JAE		
ISSUE	ITEM	CHANGED FROM	DATE	CN. NO.	DRAFTS	CHECKER	ENG. APP.
TOLERANCES		SCALE:					
ALL OTHERS	DEC. DIM. ±	DRILL, PUNCH, COMMERCIAL STOCK SIZES AND MANUFACTURERS TOLERANCES ARE NOT INCLUDED.					
	FRAC. DIM. ±						
	ANGULAR DIM. ±						

TAC	132	A-579	1-12-54
MODEL	PROJECT NO.	ASS'Y. NO.	DATE
USED ON			

REQ. ITEM	PART NO.	DESCRIPTION	SYMBOL
	.015	THE TECHNICAL MATERIEL CORP. MAMARONECK, NEW YORK	
	VINYL PLASTIC	SCHMATIC DIAGRAM	
		MODEL TAC	
TYPE & TEMPER	FADE 6-30-54	APP	WDE
HEAT TREAT. SPEC.	6-30-54	APP	WDE
FINISH & SPEC. NO.	CHECKED	FINAL APPROVAL	
		CK-175	C