

IF IT IS FOUND DESIRABLE TO CHANGE ANY TOLERANCE OR OTHER DETAIL SPECIFIED ON THIS DRAWING NOTIFY THE PURCHASER PROMPTLY.
 MAXIMUM ALLOWABLE TOLERANCES HAVE BEEN DETERMINED AND DEVIATIONS WILL BE CAUSE FOR REJECTION. REMOVE ALL BURRS AND SHARP EDGES.

DRIVER BAND SWITCH
S201-A, B

POS.	BAND (MCS)
1	2-4
2	4-8
3	8-16
4	16-32

NOTICE TO PERSONS RECEIVING THIS DRAWING

THE TECHNICAL MATERIEL CORPORATION claims proprietary right in the material disclosed herein. This drawing is issued in confidence for engineering information only and may not be reproduced or used to manufacture anything shown hereon without permission from THE TECHNICAL MATERIEL CORPORATION to the user. This drawing is loaned for mutual assistance and is subject to recall at any time.

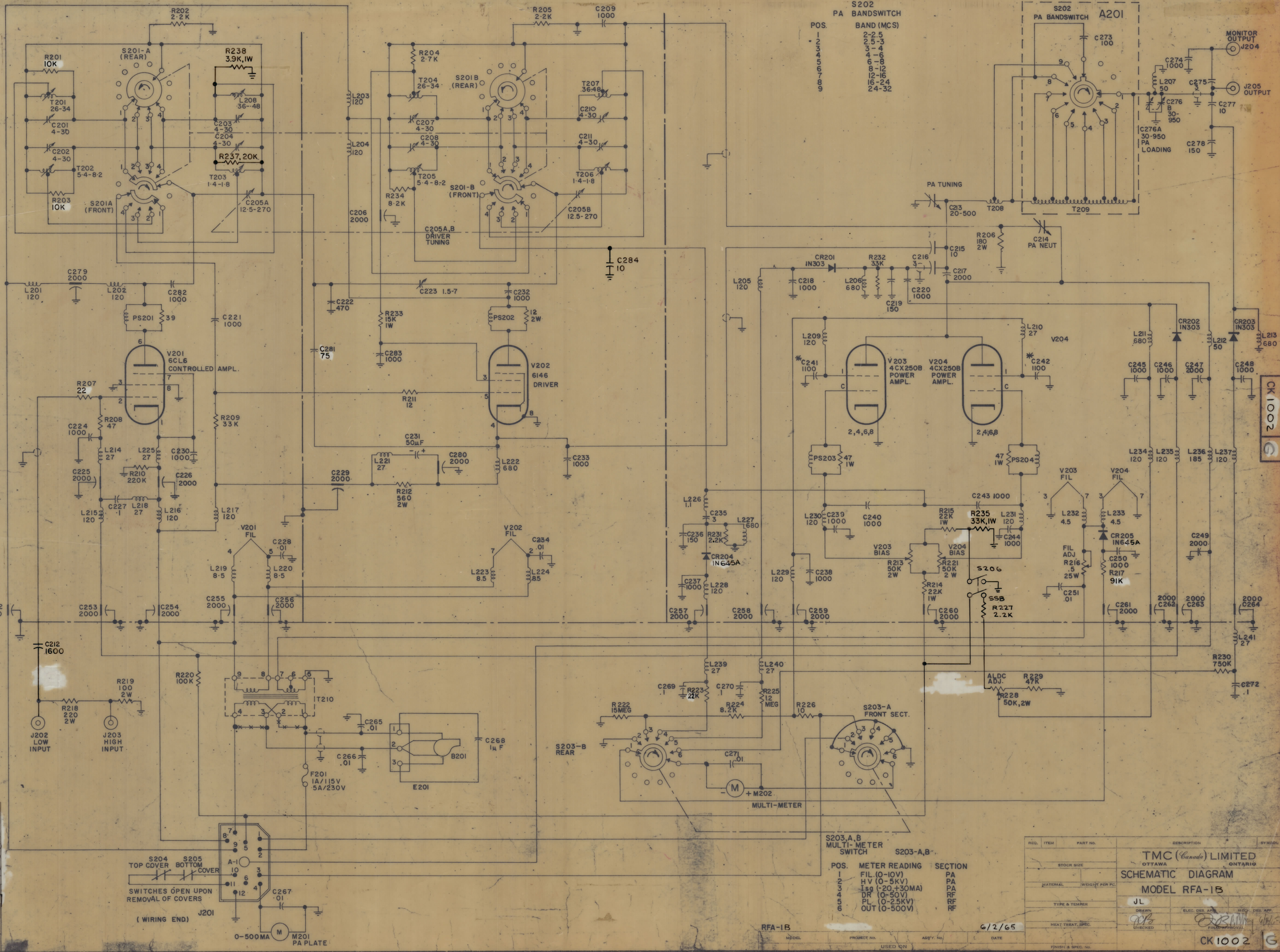
Property of:
 THE TECHNICAL MATERIEL CORPORATION
 MAMARONECK, NEW YORK

UNLESS OTHERWISE SPECIFIED:
 ALL RESISTORS ARE IN OHMS, 1/2 WATT.
 ALL CAPACITORS ARE IN μ F
 ALL COILS & TRANSFORMERS ARE IN μ H.

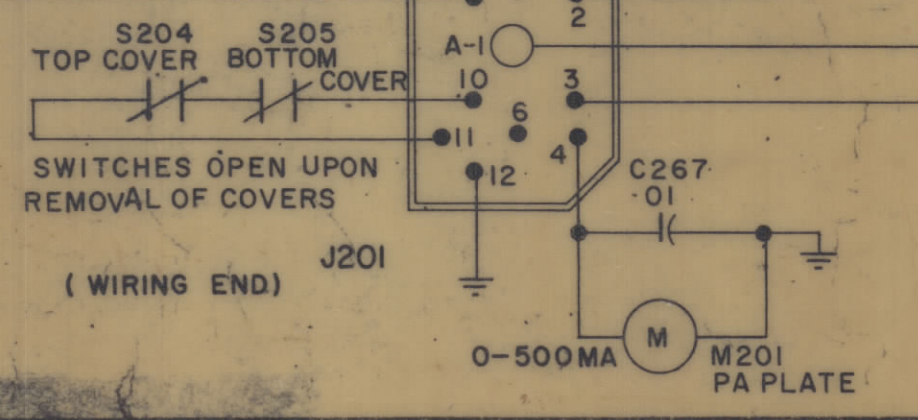
CHANGES NECESSARY TO CONVERT
 230V OPERATION.

F201 CHANGED FROM 1AMP TO 5AMP.
 T210 REMOVE JUMPERS MARKED ***
 & CONNECT A JUMPER BETWEEN
 TERMINALS 2B3.

* C241 AND C242 ARE INTEGRAL PARTS
 OF V203 AND V204 SOCKETS



ISSUE	ITEM	CHANGED FROM	DATE	BY	NO.	DRAFTS	CHECKER	ENG. APP.
G		C284, R237 & 8 ADDED C281 WAS 100, C212 WAS 680, R236 DELETED, R235 WAS 47K, R217 WAS 81K, R201 & 2 WERE 5.6K & 8.2K, R207 WAS 47	10/28/66	17	5	4	HW	82 JB
F		T210 WAS 1210 WAS	8/24/66	16806			ED	000
E		C212 680 WAS 100, R236 ADDED	6-17-66	16368			WH	000
D		R235 WAS 100 K	6-1-66	16318			WH	000
C		R223 WAS 13K, CR204 205 WAS 1N67	3-16-66	15966			WH	000
B		ON CR204 1N67 WAS 1N645	2-9-66	15119			WH	000
A		R223 13K WAS 8.2K	1/16/66	14826			DVV	000
		ORIGINAL RELEASE FOR PRODUCTION	6-2-65					



S203-A, B
 MULTI-METER
 SWITCH

POS.	METER READING	SECTION
1	FIL (0-10V)	PA
2	HV (0-5KV)	PA
3	IS (0-20+30MA)	RF
4	DR (0-50V)	RF
5	PL (0-25KV)	RF
6	OUT (0-500V)	RF

REQ.	ITEM	PART NO.	DESCRIPTION	SYMBOL
			TMC (Canada) LIMITED OTTAWA ONTARIO	
			SCHMATIC DIAGRAM	
			MODEL RFA-1B	
			JL	
			DATE: 6/2/65	
			CK1002 G	