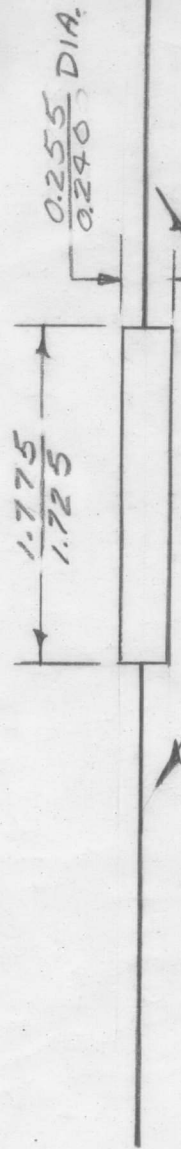


STANDARD DRAWING

IF IT IS FOUND DESIRABLE TO CHANGE ANY TOLERANCE OR OTHER DETAIL SPECIFIED ON THIS DRAWING NOTIFY THE PURCHASER PROMPTLY.

MAXIMUM ALLOWABLE TOLERANCES HAVE BEEN DETERMINED AND DEVIATIONS WILL BE CAUSE FOR REJECTION. REMOVE ALL BURRS AND SHARP EDGES

CORE STRENGTH: 15 POUNDS MIN ON 1 INCH CENTERS.
 SURFACE RESISTANCE: 450 MEGOHMS MIN. ON 1/4 INCH CENTERS
 FREQUENCY RANGE: 500 KC TO 10 MC.
 MATERIAL: CARBONYL E" OR EQUIVALENT.



WIRE LEADS - 2 1/2" LONG ± 1/8
 PHOSPHOR-BRONZE OR TINNED COPPER

CI 102 B
 USED ON
 PROJECT NO. A-337
 ASSY. NO. A-337
 DATE 11-9-53

Req. Per. UNIT 2
 MODEL XFA
 PROJECT NO. A-337

5401-140(4844) FOR
 5401-361(CTB-192) PURCHASING ONLY

REQ. ITEM	PART NO.	DESCRIPTION	SYMBOL
—	—	THE TECHNICAL MATERIEL CORP. MAMARONECK. NEW YORK	
STOCK SIZE	—	CORE,	
MATERIAL	—	POWDERED IRON	
WEIGHT PER PC.	—		
TYPE & TEMPER	—	16 11-9-53	A. J. J. WJC
HEAT TREAT. SPEC.	—	DRAWN	ELEC. DES. APP.
FINISH & SPEC. NO.	—	CHECKED	MECH. DES. APP.
		FINAL APPROVAL	
		CI 102	B

ISSUE ITEM	CHANGED FROM	DATE	CN. NO.	DRAFTS	CHECKER	ENG. APP.
B -	SPECS. ADDED, NOTE REK DIM CHG	11/9/53	1	15490	AN. J.	WJC
A -	REDRAWN WITH CHANGES	11/9/53	1	15490	AN. J.	WJC

SCALE

TOLERANCES

DEC. DIM. ±
 FRAC. DIM. ±
 ANGULAR DIM. ±

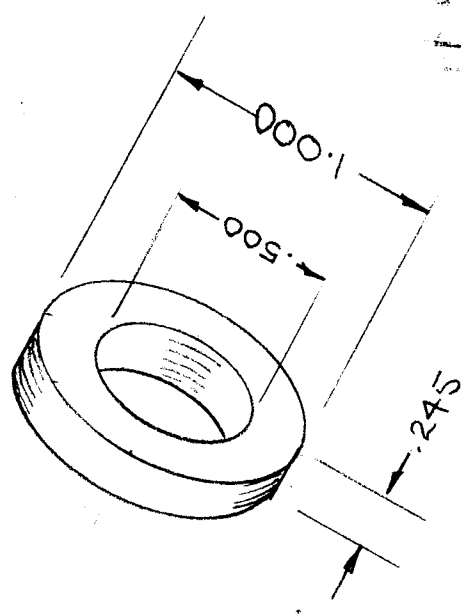
DRILL, PUNCH, COMMERCIAL STOCK SIZES AND MANUFACTURERS TOLERANCES ARE NOT INCLUDED.

CJ-104

STANDARD DRAWING

IF IT IS FOUND DESIRABLE TO CHANGE ANY TOLERANCE OR OTHER DETAIL SPECIFIED ON THIS DRAWING NOTIFY THE PURCHASER PROMPTLY.

MAXIMUM ALLOWABLE TOLERANCES HAVE BEEN DETERMINED AND DEVIATIONS WILL BE CAUSE FOR REJECTION. REMOVE ALL BURRS AND SHARP EDGES



Ref: Ferroxcube Corp of America # 8467250-3C8

USED ON

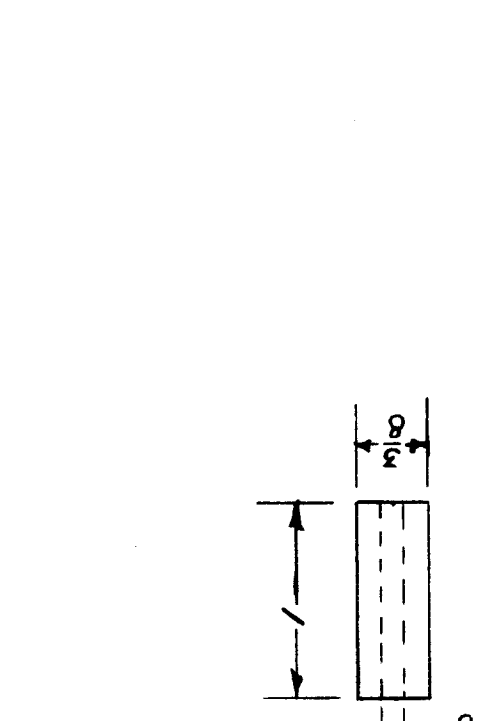
MODEL PROJECT NO. ASSY. NO. DATE

REQ. ITEM	PART NO.	DESCRIPTION	SYMBOL
		THE TECHNICAL MATERIEL CORP. MAMARONECK. NEW YORK	
STOCK SIZE		CORE, TOROIDAL	
MATERIAL	WEIGHT PER PC.		
TYPE & TEMPER			
		DRAWN J.M.D.	ELEC. DES. APP. H.R.B.
		CHECKED	MECH. DES. APP. P.M.
HEAT TREAT. SPEC.		FINAL APPROVAL	
FINISH & SPEC. NO.		CJ-104	B

ISSUE ITEM	CHANGED FROM	DATE	CN. NO.	DRAFTS CHECKER	ENG. APP.
B 1	# 203F 250-3C	4/15/68	2	J.M.D.	P.M.
A 1	REF: PART # WAS 203F 250AC	4/24/67	1	J.M.D.	P.M.
TOLERANCES					
SCALE					
DRILL, PUNCH, COMMERCIAL STOCK SIZES AND MANUFACTURERS TOLERANCES ARE NOT INCLUDED.					
ALL OTHERS	DEC. DIM. ± FRAC. DIM. ± ANGULAR DIM. ±				

CI-105 B

USED ON		
MODEL	PROJECT NO.	ASSY. NO.
CFA-1	A-	11-9-53



ELECTRICAL DATA
 FREQ. RANGE - 0.2 - 1.5 MC
 MATERIAL - MP39
 * TEST FREQ - 133 KC APPROX.
 Q TOLERANCE ~ ± 5 %
 PERM. TOL. ~ ± 2 %
 * TEST COIL ~ # 6

IF IT IS FOUND DESIRABLE TO CHANGE ANY TOLERANCE OR OTHER DETAIL SPECIFIED ON THIS DRAWING NOTIFY THE PURCHASER PROMPTLY.
 MAXIMUM ALLOWABLE TOLERANCES HAVE BEEN DETERMINED AND DEVIATIONS WILL BE CAUSE FOR REJECTION. REMOVE ALL BURRS AND SHARP EDGES

* REF: 5794

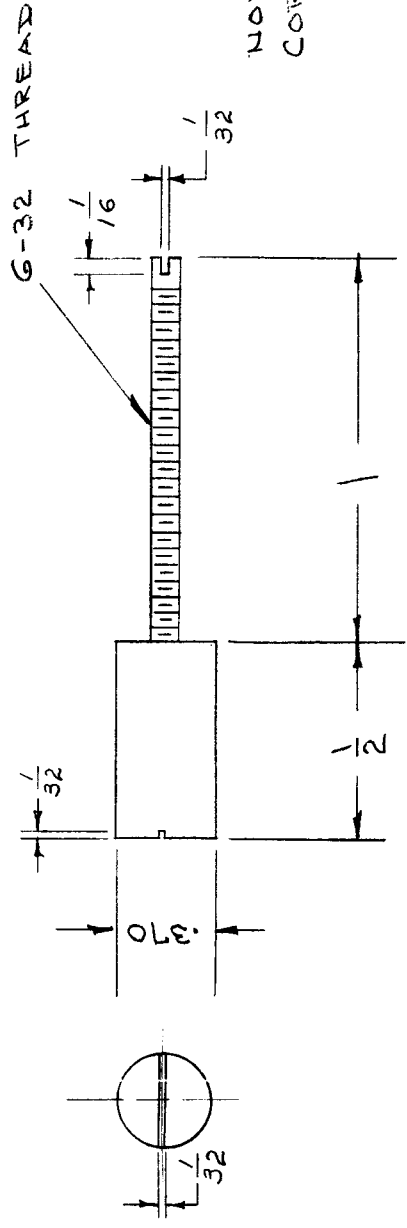
REQ. ITEM	PART NO.	DESCRIPTION	SYMBOL
	ff	THE TECHNICAL MATERIEL CORP. MAMARONECK. NEW YORK	
		CORE, TUNING	
MATERIAL	WEIGHT PER PC.		
ff	ff		
TYPE & TEMPER			
ff			
HEAT TREAT. SPEC.			
ff			
FINISH & SPEC. NO.			

ISSUE ITEM	CHANGED FROM	DATE	CN. NO.	DRAFTS CHECKER	ENG. APP.
B 1	UPDATED & CLARIFIED	11/18/53	10611	[Signature]	[Signature]
A 1	REBORN INTERANGES (CFA-102-3)	11/9/53	1	[Signature]	[Signature]

TOLERANCES		SCALE	5401-108
DEC. DIM. ±	DRILL, PUNCH, COMMERCIAL STOCK		
FRAC. DIM. ±	SIZES AND MANUFACTURERS		
ANGULAR DIM. ±	TOLERANCES ARE NOT INCLUDED.		
ALL OTHERS			
FINAL APPROVAL			
MECH. DES. APP.			
ELEC. DES. APP.			
DRAWN			
CHECKED			
DATE		16	11-9-53

IF IT IS FOUND DESIRABLE TO CHANGE ANY TOLERANCE OR OTHER DETAIL SPECIFIED ON THIS DRAWING NOTIFY THE PURCHASER PROMPTLY.

MAXIMUM ALLOWABLE TOLERANCES HAVE BEEN DETERMINED AND DEVIATIONS WILL BE CAUSE FOR REJECTION. REMOVE ALL BURRS AND SHARP EDGES



NOTE:
CORE MATERIAL S-54

CI-110

REQ. PER UNIT	PROJECT NO.	USED ON
4	FFRD-3M	
		DATE
		2-10-55

REF: STACKPOLE CARBON CO.

REQ. ITEM	PART NO.	DESCRIPTION	SYMBOL
		THE TECHNICAL MATERIEL CORP.	
STOCK SIZE		MAMARONECK. NEW YORK	
MATERIAL	WEIGHT PER PC.	CORE	
		MODEL FFRD-3M	
TYPE & TEMPER.		PL.K. 2-14-55	
HEAT TREAT. SPEC.		ELEC. DES. APP.	MECH. DES. APP.
		G.T.O.	
FINISH & SPEC. NO.		FINAL APPROVAL	
		CI-110	

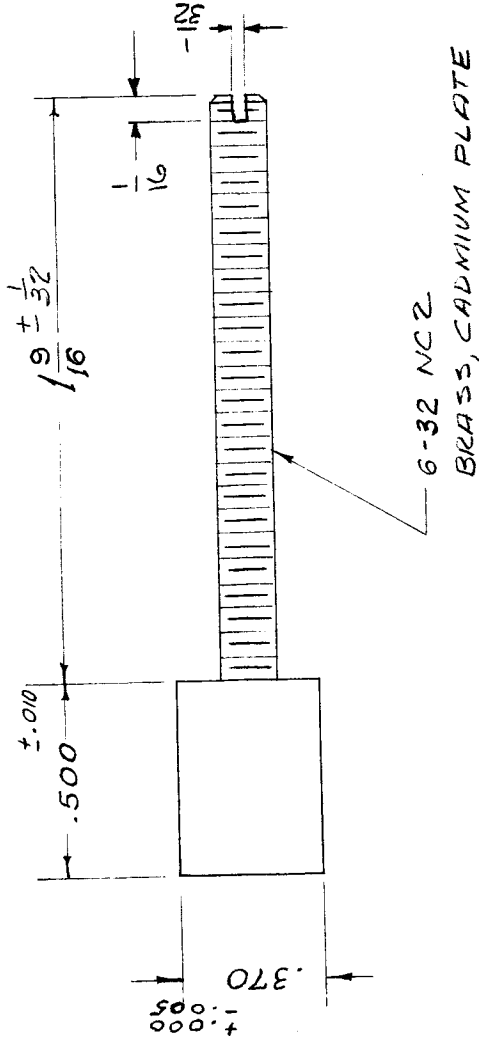
ISSUE ITEM	CHANGED FROM	DATE	CN. NO.	DRAFTS	CHECKER	ENG. APP.
TOLERANCES						
SCALE						
DEC. DIM.	± 1/64					
FRAC. DIM.	± 1/64					
ANGULAR DIM.	±					

DRILL, PUNCH, COMMERCIAL STOCK SIZES AND MANUFACTURERS TOLERANCES ARE NOT INCLUDED.

REQ. PER UNIT	MODEL	USED ON ASSY. NO.	DATE
1	VOX-1-2		1-16-53
1	PMO-1-2		8-15-54
1	RTF		2-2-56

CI-111		A
--------	--	---

ELECTRICAL DATA
 FREQ. RANGE - 7 TO 30 MC
 MATERIAL - TH
 * TEST FREQ. - 12.2 MC APPROX.
 Q TOLERANCE ~ ± 5%
 PERM. TOL. ~ ± 2%
 * TEST COIL - # 8



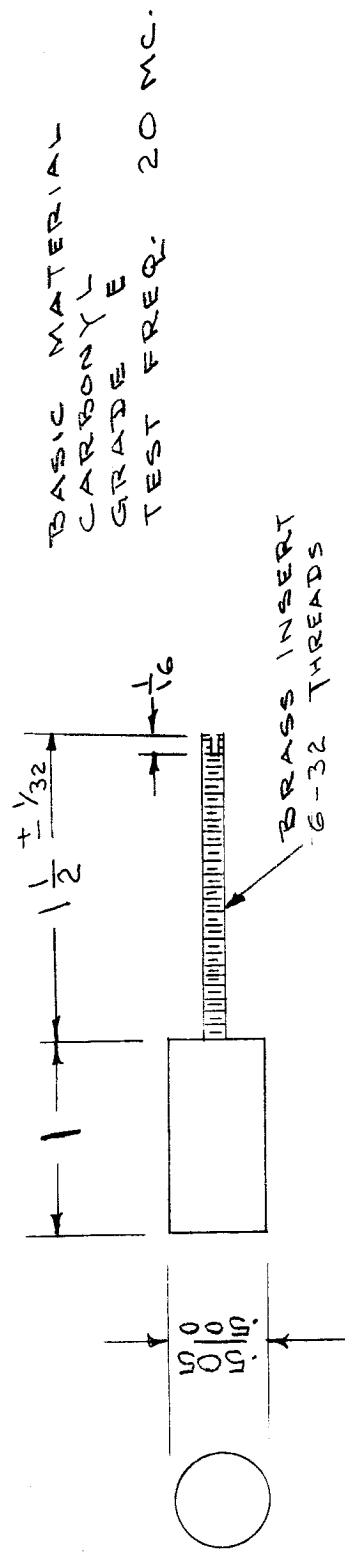
* REF: S794

REQ. ITEM	PART NO.	DESCRIPTION	SYMBOL
		THE TECHNICAL MATERIEL CORP. MAMARONECK, NEW YORK	
		CORE, TUNING	
		DRAWN <i>JAB</i> CHECKED <i>JAB</i>	
		118 9-8-55	A. J. J.
		TYPE & TEMPER HEAT TREAT. SPEC.	FINAL APPROVAL
		FINISH & SPEC. NO.	CI-111
		ELEC. DES. APP. MECH. DES. APP.	

SCALE: S401-108
 MAXIMUM ALLOWABLE TOLERANCES HAVE BEEN DETERMINED AND ANY DEVIATIONS WILL BE CAUSE FOR REJECTION.
 REMOVE ALL BURRS AND SHARP EDGES

REQ. PER UNIT		USED ON	
1		MODEL	ASSY. NO.
1		RTF	10.3-SS
1		MULT.	11-20-58

CI-113



BASIC MATERIAL
CARBONYL
GRADE E
TEST FREQ. 20 MC.

REF: PYROFERRIC CO. (PY-1A)

REQ. ITEM	PART NO.	DESCRIPTION	SYMBOL
		THE TECHNICAL MATERIEL CORP. MAMARONECK. NEW YORK	
	STOCK SIZE	CORE, 16-32 MC.	
	MATERIAL	MULTIPLIER GPT-750	
	DATE	CH. NO.	DRAFTS
	DATE	CHECKER	ENG. APP.
SCALE:			
TOLERANCES			
DEC. DIM. ±	CHANGED FROM	MAXIMUM ALLOWABLE TOLERANCES HAVE BEEN DETERMINED AND ANY DEVIATIONS WILL BE CAUSE FOR REJECTION. REMOVE ALL BURRS AND SHARP EDGES	
FRAC. DIM. ±			
ANGULAR DIM. ±	1/64		
	FINISH & SPEC. NO.	DRAWN	CHECKED
		FADE	WDE
	TYPE & TEMPER	HEAT TREAT. SPEC.	ELEC. DES. APP.
			MECH. DES. APP.
			FINAL APPROVAL
			CI-113

A. J. J.

CI-113

USED ON ASSY. NO.		DATE		MODEL		CI-114		C	
TMC NO.		MFG. NO.		CORE MAT'L.		DIM.		USED ON	
CI-114	SEE MFG CHART	POWDERED IRON	5/8"	3/16"	1/2"	GPR			
CI-114-1	NATIONAL MOLYDITE CO.	P-FERRITE	1"	1/4"	1/2"	MSR-3			
CI-114-2	STACKPOLE	G 2	5/8"	3/8"	1/2"	PAL 350			

STANDARD DRAWING

LEADS - TINNED COPPER

INSULATION

NOTICE TO PERSONS RECEIVING THIS DRAWING

THE TECHNICAL MATERIEL CORPORATION claims proprietary right in the material disclosed hereon. This drawing is issued in confidence for engineering information only and may not be reproduced or used to manufacture anything shown hereon without permission from THE TECHNICAL MATERIEL CORPORATION to the user. This drawing is loaned for mutual assistance and is subject to recall at any time.

Property of:
THE TECHNICAL MATERIEL CORPORATION
MAMARONECK, NEW YORK

MFG. CHART		REF TMC NO
MANUFACTURER	MFG. CAT. NO.	CI-114
STACKPOLE CARBON CO.	BB-1271	CI-114
QUALITY COMPONENTS INC.	QSG KP-198 X 5/8	CI-114

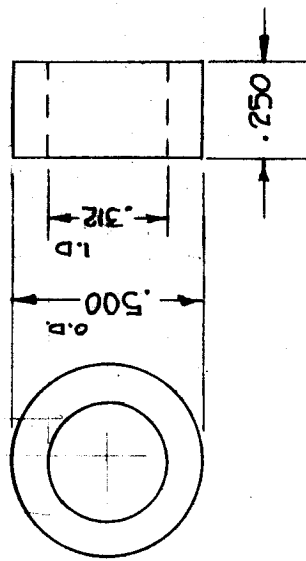
REQ. ITEM	PART NO.	DESCRIPTION	SYMBOL
C 1	3543	11-22-60	
B 2	2	9/23/58	
A 1	1	4/10/58	
ISSUE ITEM		CHANGED FROM	
TOLERANCES		SCALE:	
DEC. DIM. ±		MAXIMUM ALLOWABLE TOLERANCES HAVE BEEN DETERMINED AND ANY DEVIATIONS WILL BE CAUSE FOR REJECTION.	
FRAG. DIM. ±		REMOVE ALL BURRS AND SHARP EDGES	
ANGULAR DIM. ±			

TYPE & TEMPER	HEAT TREAT. SPEC.	CHECKED	FINAL APPROVAL
16	16	16	16
DATE		DATE	
16		16	
CHECKER		CHECKER	
A.J.J.		A.J.J.	
DRAFTS		DRAFTS	
16		16	
ENG. APP.		ENG. APP.	
16		16	

REV	DATE	BY	APP
2	6-24-57	SBE-1	
1	11-30-54	SBE-3	
2	11-30-54	SBE-3	

CI-115

A



OBSOLETE

REPLACED BY CI 127 - 7

COLOR CODE: GREEN

A - S 401-118 (204 F250-3)

B - S401-213 (CF108-H)

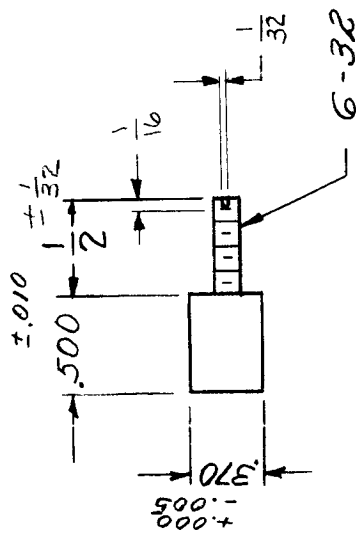
REQ. ITEM	PART NO.	DESCRIPTION	SYMBOL
		THE TECHNICAL MATERIEL CORP. MAMARONECK, NEW YORK	
	STOCK SIZE	CORE TOROIDAL	
	FERRAMIC	RING TYPE	
	MATERIAL	FCU. 24.57	A 57
		DRAWN	CHECKED
		TUMBLER	FINAL APPR.
	TYPE & TEMPER HEAT TREAT. SPEC.	ELC. DES. APP.	MECH. DES. APP.
	FINISH & SPEC. NO.		

5/18/70 18853 LA [Signature] OF [Signature]
 4.24.68 18890 [Signature] F B [Signature]
 DATE CH. NO. DRAFTS CHECKER ENG. APP.

TOLERANCES
 DEC. DIM. ± .020
 FRAC. DIM. ±
 ANGULAR DIM. ±

SCALE:
 MAXIMUM ALLOWABLE TOLERANCES HAVE BEEN DETERMINED AND ANY DEVIATIONS WILL BE CAUSE FOR REJECTION.
 REMOVE ALL BURRS AND SHARP EDGES

REQ. PER UNIT	USED ON	
	MODEL	DATE
1	CI-117	A



6-32 NC-2
BRASS CADMIUM PLATE

ELECTRICAL DATA

- FREQ. RANGE - 7 TO 30 MC
- MATERIAL - TH
- * TEST FREQ. - 12.2 MC APPROX.
- Q TOLERANCE ~ ± 5%
- PERM. TOL. ~ ± 2%
- * TEST COIL ~ #8

* REF: 5794

REQ. ITEM	PART NO.	DESCRIPTION	SYMBOL
		THE TECHNICAL MATERIEL CORP. MAMARONECK. NEW YORK	
	STOCK SIZE	CORE, TUNING	
	MATERIAL		
	TYPE & TEMPER	CHECKED	
	HEAT TREAT. SPEC.	DRAWN	
	FINISH & SPEC. NO.	ELEC. DES. APP. MECH. DES. APP.	
			CI-117
			A

94H33
eng

SCALE: 5401-108

MAXIMUM ALLOWABLE TOLERANCES HAVE BEEN DETERMINED AND ANY DEVIATIONS WILL BE CAUSE FOR REJECTION. REMOVE ALL BURRS AND SHARP EDGES

DATE 7/6/63 CH. NO. 10611 CHECKER [Signature] ENG. APP. [Signature]

ISSUE ITEM A 1 UPDATED & CLARIFIED CHANGED FROM TOLERANCES

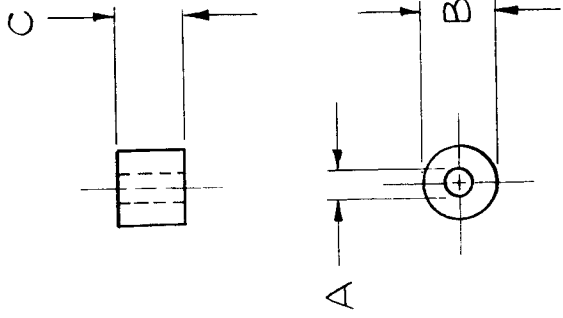
DEC. DIM. ±
FRAC. DIM. ±
ANGULAR DIM. ±

CI-120

USED ON
ASS'Y. NO. DATE

REQ. PER UNIT
MODEL

TMC PART NO. CI-120-1 MFG. PART NO. 56-590-653/3B MATERIAL 3B A .047 ±.000 B .138 ±.008 C .118 ±.020



ISSUE ITEM	CHANGED FROM	DATE	CH. NO.	DRAFTS	CHECKER	ENG. APP.	REQ. ITEM	PART NO.	DESCRIPTION	SYMBOL
TOLERANCES									THE TECHNICAL MATERIEL CORP.	
DEC. DIM. ±									MAMARONECK, NEW YORK	
FRAC. DIM. ±									CORE, TOROID,	
ANGULAR DIM. ±									MINIMUM BEAD	
SCALE: 5401-118									J.C. Biele	
MAXIMUM ALLOWABLE TOLERANCES HAVE BEEN DETERMINED AND ANY DEVIATIONS WILL BE CAUSE FOR REJECTION. REMOVE ALL BURRS AND SHARP EDGES									DRAWN	
TYPE & TEMPER									CHECKED	
HEAT TREAT. SPEC.									FINAL APPR. VAL	
FINISH & SPEC. NO.										CI-120

STANDARD DRAWING

THE CONTENTS OF THIS DRAWING ARE THE EXCLUSIVE PROPERTY OF THE TECHNICAL MATERIEL CORP. ITS UNAUTHORIZED USE OR REPRODUCTION IN WHOLE OR IN PART IS STRICTLY FORBIDDEN.

USED ON: **CI-121**

REQ. PER UNIT: **2**

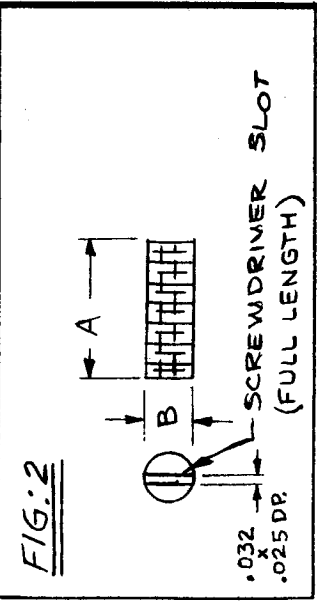
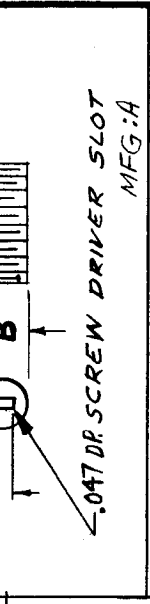
MODEL: **GPR-92**

ASSY. NO.: **A2120**

DATE: **11-16-61**

SYMBOL: **C**

TMC NO.	MFR. NO. OR DESIG.	CORE TYPE	A	B	MAT'L	T HD'S	FREQ RANGE
CI-121-1	M294	FIG: 1	3/8	.180	Q-1	10-32	.2 - 8 MC
CI-121-2	M279	FIG: 2	3/8	.159	Q-1	8-32	.2 - 8 MC



SPECIFICATIONS ± 20%

MATERIAL	Q-1
INITIAL PERM.	125@1MC
T.C. OF INITIAL PERM.	.10%/°C MAX
CURIE POINT	350°C
VOL. RESISTIVITY	HIGH
LOSS FACTOR	.00002@10MC
1/μ ₀ Q	.00016@10.0MC

USED WITH:
 COIL FORM - CF132
 ALIGN. TOOL - TP127

MFG: A = 5401-140

REQ. ITEM	PART NO.	DESCRIPTION	SYMBOL
		GELLMAN	
		THE TECHNICAL MATERIEL CORP. MAMARONECK, NEW YORK	
		CORE, THREADED	
		FERRITE	
		MATERIAL	
		TYPE & TEMPER	
		HEATTREAT. SPEC.	
		FINISH & SPEC. NO.	
		W.S.	
		DRAWN	
		CHECKED	
		FINAL APPROVAL	
		MA	
		CI-121	
		ELEC. DES. APP.	
		MECH. DES. APP.	

SCALE: NONE

MAXIMUM ALLOWABLE TOLERANCES HAVE BEEN DETERMINED AND ANY DEVIATIONS WILL BE CAUSE FOR REJECTION. REMOVE ALL BURRS AND SHARP EDGES

DATE: 4-6-25 13845
 8864 12026
 11/4/63 10316

DATE: 11/4/63

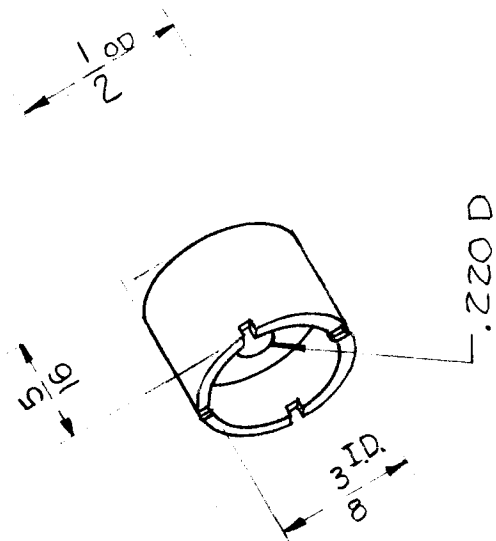
CHECKER: J.L.
 M.T.
 M.T.

ENG. APP.:

REQ. PER. UNIT	USED ON		DATE
	MODEL	ASBY. N.	
2	GPR-92	A2138	9-1-61
1	GPR-92	A-2139	

CI-122

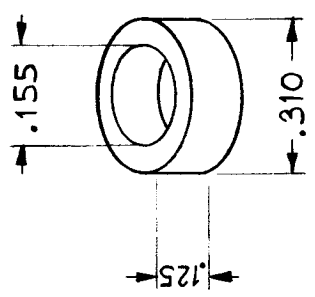
DIM. FOR REF. ONLY



REQ. ITEM	PART NO.	DESCRIPTION	SYMBOL
		GELLMAN	
		THE TECHNICAL MATERIEL CORP.	
		MAMARONECK, NEW YORK	
		CUP CORE, FERRITE	
ISSUE ITEM	CHANGED FROM	DATE	CH. NO.
TOLERANCES			
SCALE 5-40-140 #N428			
MAXIMUM ALLOWABLE TOLERANCES HAVE BEEN DETERMINED AND ANY DEVIATIONS WILL BE CAUSE FOR REJECTION. REMOVE ALL BURRS AND SHARP EDGES			
TYPE & TEMPER	HEAT TREAT. SPEC.	CHECKER	ENG. APP.
DRAWN		CHECKED	FINAL APPROVAL
RUZZO		JMA	CI-122
ELEC./DES. APP. MECH. DES. APP.			

REQ. PER UNIT 6	MODEL	USED ON
	HFS-1	ABBY. NO.
	SYNTH	DATE
		8-15-62

CI-124



REQ. ITEM	PART NO.	J. STRUMMER DESCRIPTION	SYMBOL
		THE TECHNICAL MATERIEL CORP. MAMARONECK, NEW YORK	
		CARBONYL SF	
		MATERIAL	
		TYPE & TEMPER	
		HEATTREAT. SPEC.	
		FINI H & SPEC. NO.	
ISSUE ITEM	CHANGED FROM	DATE	CH. NO.
			DRAFTS
			CHECKER
			ENG. APP.
TOLERANCES			
SCALE: S401-108 (310-165-125SF0)			
MAXIMUM ALLOWABLE TOLERANCES HAVE BEEN DETERMINED AND ANY DEVIATIONS WILL BE CAUSE FOR REJECTION. REMOVE ALL BURRS AND SHARP EDGES			
DEC. DIM. ±			
FRAC. DIM. ±			
ANGULAR DIM. ±			
		DRAWN	CHECKED
		JMA	JMA
		ELEC. DES. APP	MECH. DES. APP
		W.A.F	W.A.P
			BP
			FINAL APPROVAL
			CI-124

THE CONTENTS OF THIS DRAWING ARE THE EXCLUSIVE PROPERTY OF THE TECHNICAL MATERIEL CORP. ITS UNAUTHORIZED USE OR REPRODUCTION IN WHOLE OR IN PART IS STRICTLY FORBIDDEN.

REQ. PER UNIT

USED ON

CI-126 A

DATE

1-25-62

ASS'Y. NO.

MODEL

HFR-1/N

STANDARD DRAWING

FREQ. RANGE

E

D

C

B

A

MFG. PART NO.

M214A

CI-126-1

.2-10 MCS

3-48

.095 APPROX

.195
.200

1/2

1 3/4

M214A

CI-126-2

.2-10 MCS

3-48

.095 APPROX

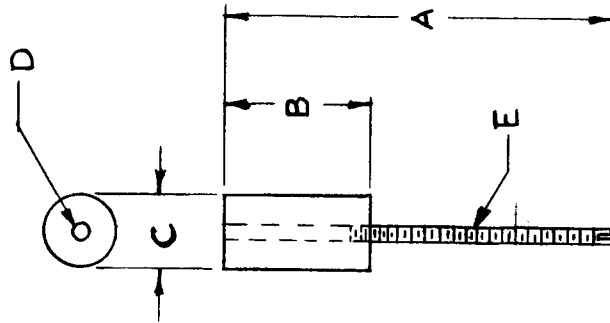
.195
.200

1/2

1 1/4

M214A

CI-126-2



REQ. ITEM	PART NO.	DESCRIPTION	SYMBOL
		THE TECHNICAL MATERIEL CORP. MAMARONECK, NEW YORK	
		CORE, TUNING	
		FERRITE Q1	
		MATERIAL	
		W. S.	
		DRAWN	
		CHECKED	
		FINAL APPROVAL	
		ELEC. DES. APP.	
		MECH. DES. APP.	
		CI-126 A	

UNLESS OTHERWISE SPECIFIED:
DIMENSIONS ARE IN INCHES
TOLERANCES ON
FRAC. ± 1/64 DEC. ± .005 ANGLES ± 1/2°

SCALE: 5401-140

MAXIMUM ALLOWABLE TOLERANCES HAVE BEEN DETERMINED AND ANY DEVIATIONS WILL BE CAUSE FOR REJECTION.
REMOVE ALL BURRS AND SHARP EDGES

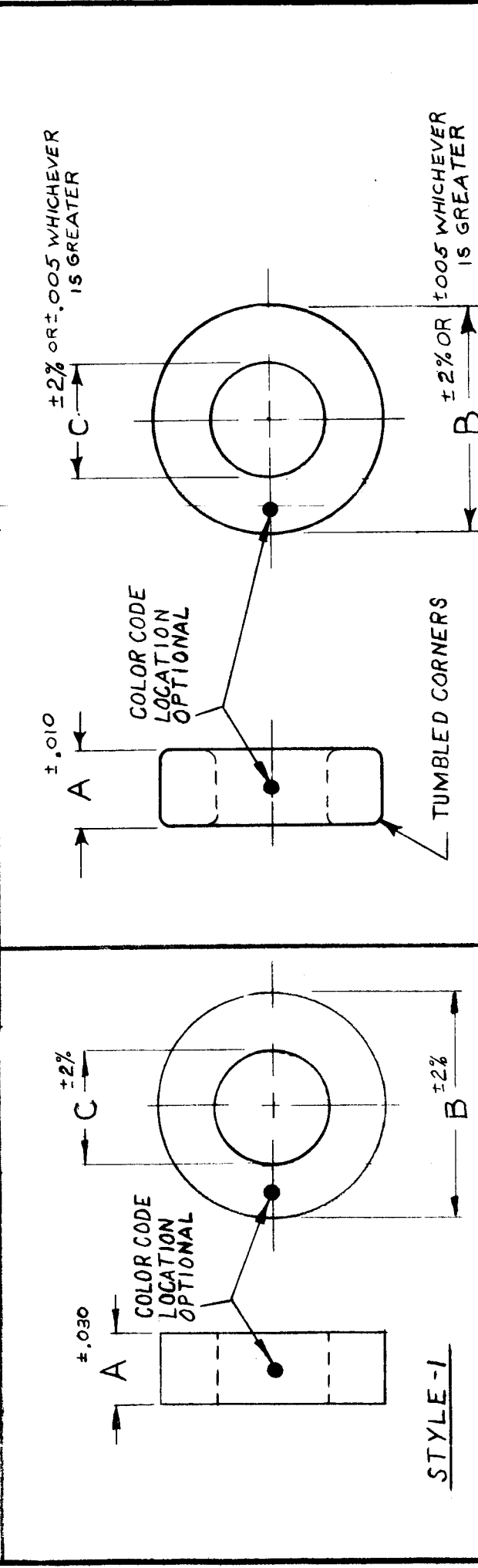
STANDARD DRAWING

CI 128 F

USED ON	DATE
MODEL	3/5/63
ASSY. NO.	
TRX-1	

THE CONTENTS OF THIS DRAWING ARE THE EXCLUSIVE PROPERTY OF THE TECHNICAL MATERIEL CORP. ITS UNAUTHORIZED USE FOR REPRODUCTION IN WHOLE OR IN PART IS STRICTLY FORBIDDEN.

TMC PART NO.	MFG'S PART NO.	A	B	C	FREQ RANGE	MATERIAL	FINISH	COLOR CODE	STYLE	MFR.
CI 128-1	F-846-3Q	.250	.500	.281	2-30MC	Q-1	TUMBLD	BLU/RED	2	
CI 128-2	CF-14-Q-2	.375	1.250	.750	10-80MC	Q-2	TUMBLD	YELLOW	2	B
CI 128-3	F-568-Q-2	.500	2.400	1.400	10-80MC	Q-2	NATURAL	YELLOW	1	B
CI 128-4	CF114 Q1	.375	1.250	.750	2-30MC	Q-1	NATURAL	BLU/RED	1 OR 2	B



REQ. PER UNIT	MODEL	ASSY. NO.	DATE	USED ON	SYMBOL
1	TRX-1		3/5/63		
<p>J. STRUMER DESCRIPTION</p> <p>THE TECHNICAL MATERIEL CORP. MAMARONECK. NEW YORK</p> <p>CORE, TOROID</p>					
<p>STOCK SIZE</p> <p>FERRAMIC</p> <p>MATERIAL</p>					
<p>TYPE & TEMPER HEAT TREAT. SPEC.</p> <p>SEE CHART</p>					
<p>FINISH & SPEC. NO.</p> <p>B. 5401-213</p>					
<p>DRAWN</p> <p>CHECKED</p> <p>3/19/63</p>					
<p>ENG. DES. APP.</p> <p>MCH. DES. APP.</p>					
<p>FINAL APPROVAL</p> <p>CI 128 F</p>					

THE CONTENTS OF THIS DRAWING ARE THE EXCLUSIVE PROPERTY OF THE TECHNICAL MATERIEL CORP. ITS UNAUTHORIZED USE FOR REPRODUCTION IN WHOLE OR IN PART IS STRICTLY FORBIDDEN.

REQ. PER UNIT
1

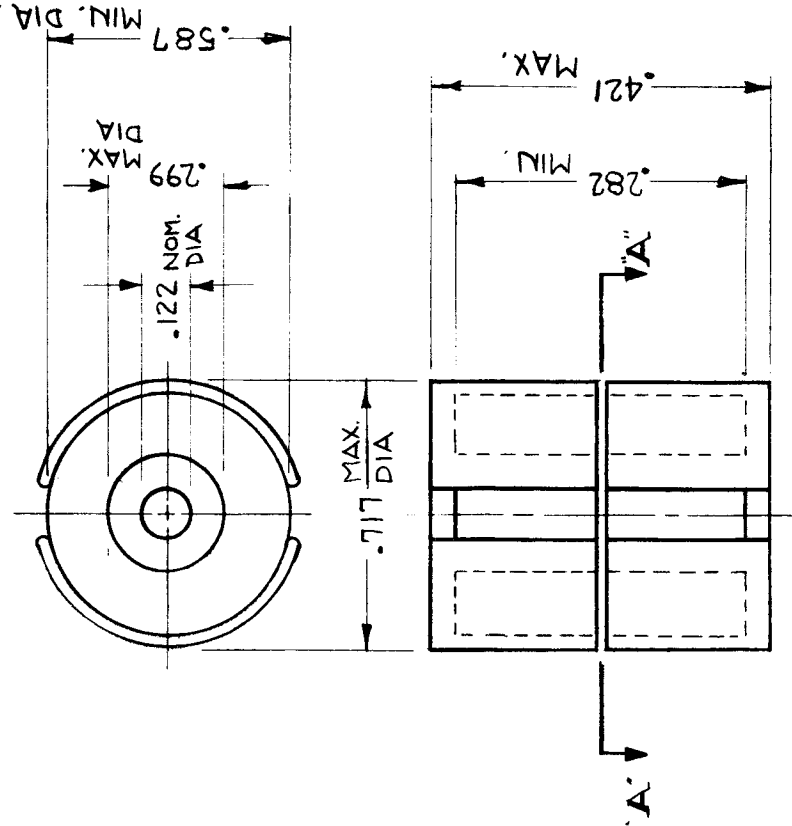
MODEL
VLR-1

USED ON ASSY. NO.
A-3167

DATE
5-27-63

CI 131 0

VIEW "A-A"



~ SPECIFICATIONS ~

- 1 - TEMPERATURE COMPENSATED CUP CORE.
- 2 - INDUCTANCE (MH/1000 TURNS) ~ 160 ± 3%
- 3 - TEMPERATURE COEFFICIENT OF "L"
(+PPM/°C) - 70-180.
- 4 - OPERATING TEMPERATURE RANGE ~
0°C - 50°C.

NOTE:
CORES MUST BE STOCKED AND USED AS A MATCHED SET.

MFG PART NO. TC-202-160

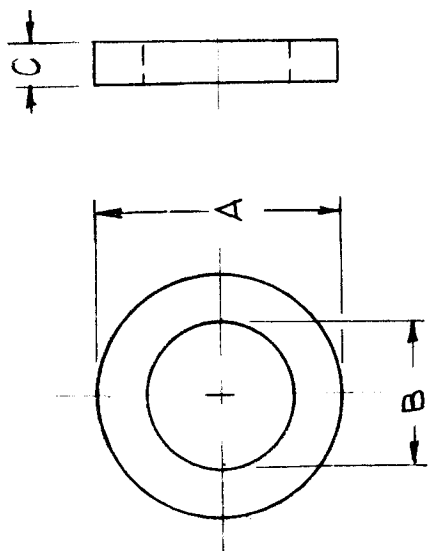
REQ. ITEM	PART NO.	M, GELLMAN DESCRIPTION	SYMBOL
		THE TECHNICAL MATERIEL CORP. MAMARONECK. NEW YORK	
		CORE, CUP	
		MATERIAL	
		DRAWN	
		CHECKED	
		HEAT TREAT. SPEC.	
		FINISH & SPEC. NO.	
		ELEC. DES. APP.	
		MECH. DES. APP.	
		FINAL APPROVAL	
		CI 131	0

SYM 0
DESCRIPTION ORIGINAL RELEASE FOR PRODUCTION
DATE 5/11/64
CH. NO. 0
DRAFTS A.M. @
CHECKER
ENG. APP.
SCALE 2:1
CODE C
S401-213
UNLESS OTHERWISE SPECIFIED DIMENSIONS ARE IN INCHES AND INCLUDE CHEMICALLY APPLIED OR PLATED FINISHES
TOLERANCES FRACTIONS ± 1/64 ANGLES ± 0° 30'
DECIMALS .X ± .05 .XX ± .01 .XXX ± .005

STANDARD DRAWING

TMC	MFGR	DIMENSIONS			USED ON	CI 135	B
PART No.	PART No.	A	B	C	ASSY. NO.		
CI 135-1	CF123-05	2.400±2%	1.400±2%	500±.030	DATE	6-16-65	
					MODEL	GPT-10KLF	
					REQ. PER UNIT		
					MATERIAL	O-5	

PROPERTIES	UNIT	MATERIEL
INITIAL PERM@100 KC	-	2400
MAX. PERM	-	4880
SAT. FLUX DENSITY	GAUSS	4700
RESIDUAL MAG.	GAUSS	1450
COERCIVE FORCE	DERSTED	0.16
TEMP. COEF OF INITIAL FORCE	%°C	NOT RATED
CURIE POINT	+ °C	210°C
VOL. RESISTIVITY	OHM-CM	LOW
LOSS FACTOR@100KC		.401



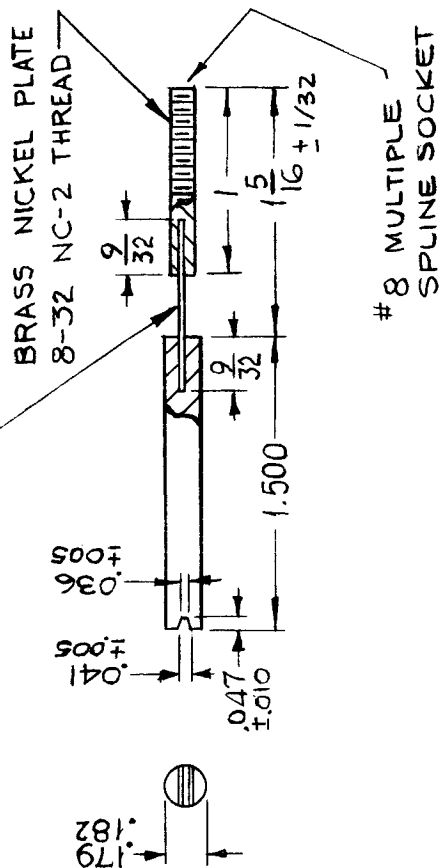
MARKING : MATERIAL TYPE, OR COLOR
CODE (VIOLET & WHITE),
OPTIONAL

REQ. ITEM	PART NO.	BUDETTI	DESCRIPTION	SYMBOL
			THE TECHNICAL MATERIEL CORP. MAMARONECK. NEW YORK	
	STOCK SIZE		COPE, TOROID	
	MATERIAL			
TYPE & TEMPER	HEAT TREAT. SPEC.	G.D.L	6-17-65	FINAL APPROVAL
FINISH & SPEC. NO.	ELEC. DES. APP.		MECH. DES. APP.	CI 135
				B

SYM	DESCRIPTION	DATE	CH. NO.	DRAFTS	CHECKER	ENG. APP.
B	MFG NO WAS F5CB, A WAS 2.3/B, B WAS 1-3/B, C WAS 1/2, D DELE.	6-30-66	16483		JCS	
A	"D" WAS 7/16; ADDED "C" DIM AND NOTE	5-24-66	16270	C.H.	JCS	
Ø	ORIGINAL RELEASE FOR PRODUCTION	6-17-65	#	JC		
	UNLESS OTHERWISE SPECIFIED DIMENSIONS ARE IN INCHES AND INCLUDE CHEMICALLY APPLIED OR PLATED FINISHES	SCALE DO NOT SCALE				
DECIMALS	FRACTIONS	CODE				
X ± .05	± 1/64	S401 - 213				
XX ± .01	ANGLES	C				
XXX ± .005	± 9° 30'					

REQ. PER UNIT		USED ON		DATE		CI138	
MODEL		ASSY. NO.		DATE		CI138	
VLRB-1				10-21-64			
TMC P/N	MFG. P/N	CORE MATERIAL	FREQ. RANGE	APPROX. TEST FREQ.	PERM. TOL.	TEST COIL*	
CI138-1	52-6118-16	CARBONYL H.P.	100KC-1500KC	141 KC	±2%	±7½%	6D

DRILL & SECURE IN PLACE .020 DIA. STAINLESS STEEL WIRE



STANDARD DRAWING

*REF: 5734

PRESS: SIDE MOLD

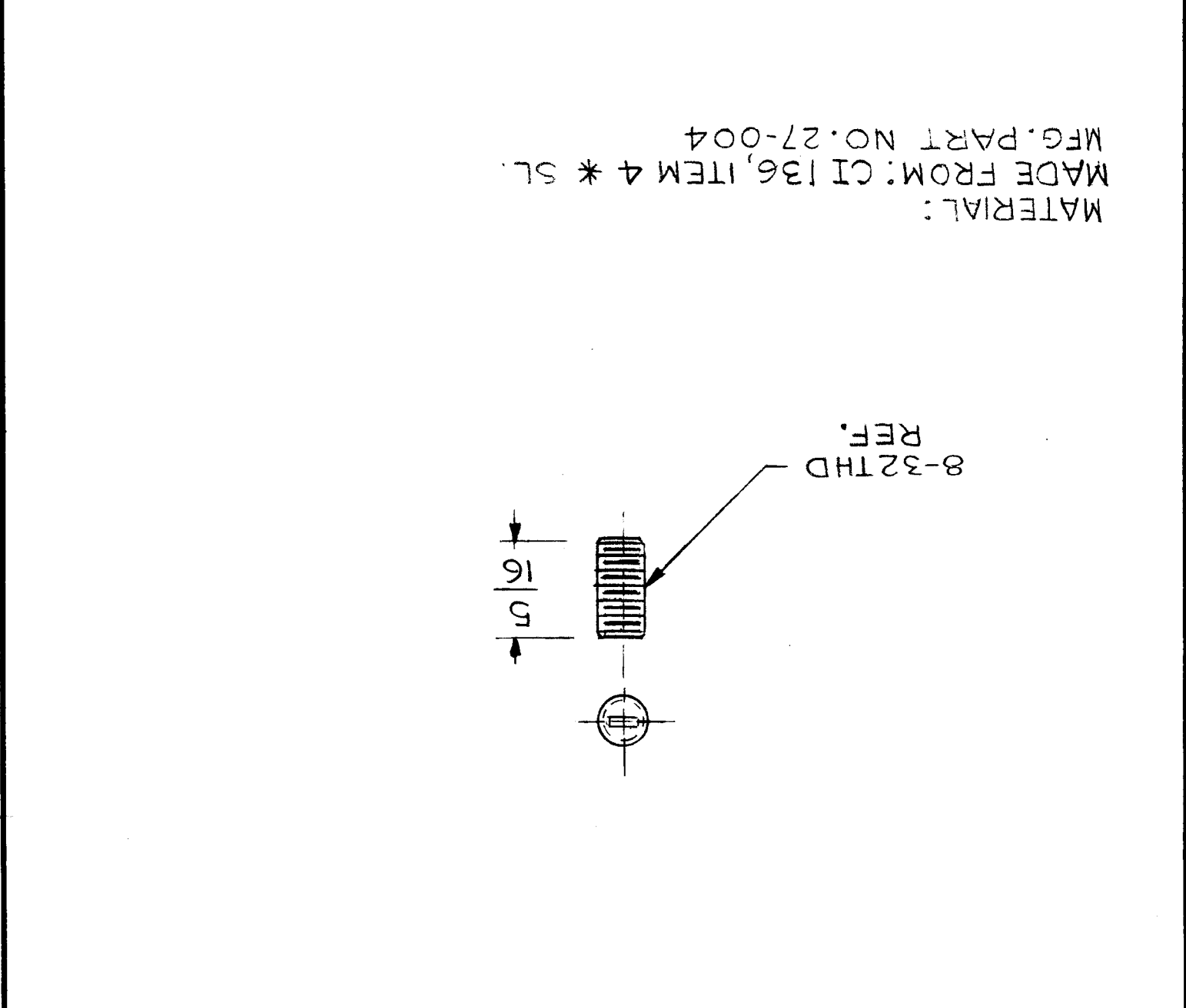
REQ. ITEM	PART NO.	DESCRIPTION	SYMBOL
	H	0 POSE	
	STOCK SIZE	THE TECHNICAL MATERIEL CORP. MAMARONECK. NEW YORK	
	H	CORE, FLEXIBLE INSERT	
	MATERIAL		
	H	SPG	
TYPE & TEMPER	HEAT TREAT. SPEC.	DRAWN	CHECKED
			FINAL APPROVAL
FINISH & SPEC. NO.			CI138
			Ø

NOTICE TO PERSONS RECEIVING THIS DRAWING
 THE TECHNICAL MATERIEL CORPORATION claims proprietary right in the material disclosed hereon. This drawing is issued in confidence for engineering information only and may not be reproduced or used to manufacture anything shown hereon without permission from THE TECHNICAL MATERIEL CORPORATION to the user. This drawing is loaned for mutual assistance and is subject to recall at any time.

SCALE 2:1	SHEET	OF
SIZE A	CODE IDENT. NO. 82679	DWG NO. CI 142
ISSUE		

DATE 2-24-74	DATE	DATE	DATE	DATE	DATE
DRAWN G.D.L.	CHECKED	ELECT. DES.	MECH. DES.	FINAL APPROVAL	DATE 1/10/74
FINISH			MATERIAL SEE NOTE		

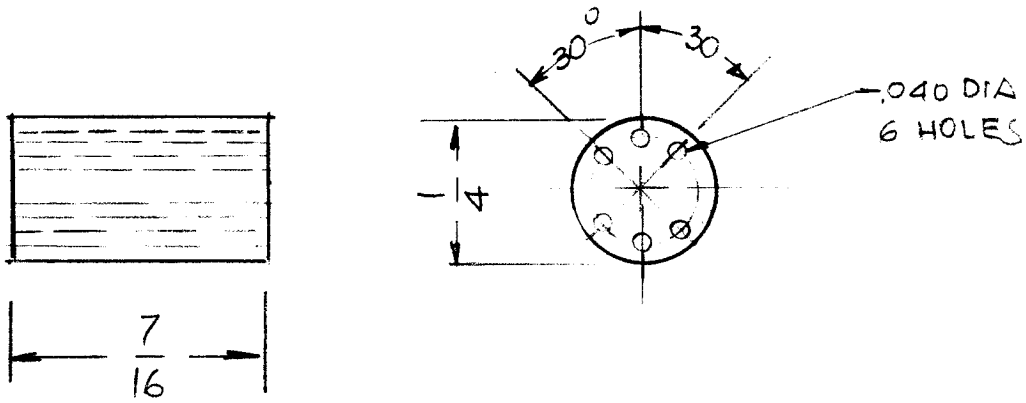
UNLESS OTHERWISE SPECIFIED DIMENSIONS ARE IN INCHES AND INCLUDE CHEMICALLY APPLIED OR PLATED FINISHES	DECIMALS	1/64	XX ± .05	ANGLES	° .30'
LIST OF MATERIAL					
REQ'D ITEM	PART NUMBER	DESCRIPTION	SYM.		



MATERIAL:
 MADE FROM: CI 136, ITEM 4 * SL.
 MFG. PART NO. 27-004

APPLICATION				REVISIONS			
QTY	MODEL USED ON	ASS'Y NO.	LTR	DESCRIPTION	DATE	E.M.N.NO	DRAFT
3	GPR110	CL487			1/19/74		SDZ
				ORIGINAL RELEASE			*

APPLICATION			REVISIONS						
QTY	MODEL USED ON	ASS'Y NO.	LTR	DESCRIPTION	DATE	E.M.N.NO	DRAFT	CHKD	APPD

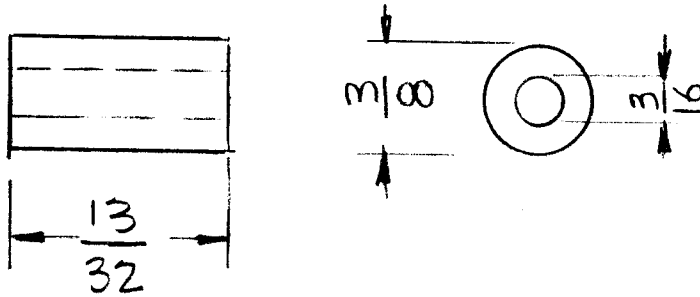


120 MATERIAL 4C6 OR EQUIV.
(FREQ 2 to 30 MHz)

(ALL DIMENTIONS ARE APPROX)

UNLESS OTHERWISE SPECIFIED DIMENSIONS ARE IN INCHES AND INCLUDE CHEMICALLY APPLIED OR PLATED FINISHES		REQ'D	ITEM	PART NUMBER	DESCRIPTION	SYM.	
DECIMALS .X ± .05 .XX ± .01 .XXX ± .005 TOLS. 1/64 ANGLES 0° .30'		LIST OF MATERIAL					
MATERIAL FERRITE		FINAL APPROVAL	DATE	THE TECHNICAL MATERIEL CORP. MAMARONECK, NEW YORK (6) HOLE CHOKE CORE			
FINISH		MECH. DES.	DATE				
		ELECT. DES.	DATE				
		CHECKED	DATE				
		DRAWN G.D.L.	DATE 6-29-83				
NOTICE TO PERSONS RECEIVING THIS DRAWING THE TECHNICAL MATERIEL CORPORATION claims proprietary right in the material disclosed hereon. This drawing is issued in confidence for engineering information only and may not be reproduced or used to manufacture anything shown hereon without permission from THE TECHNICAL MATERIEL CORPORATION to the user. This drawing is loaned for mutual assistance and is subject to recall at any time.				SIZE A	CODE IDENT. NO. 82679	DWG NO. CI 144	ISSUE
				SCALE —	SHEET OF		

APPLICATION			REVISIONS						
QTY	MODEL USED ON	ASS'Y NO.	LTR	DESCRIPTION	DATE	E.M.N.NO	DRAFT	CHKD	APPD



120 MATERIAL 4C6 OR EQUIV
 FREQ 2 to 30 MHz
 (ALL DIMENSIONS ARE APPROX)

UNLESS OTHERWISE SPECIFIED DIMENSIONS ARE IN INCHES AND INCLUDE CHEMICALLY APPLIED OR PLATED FINISHES	REQ'D	ITEM	PART NUMBER	DESCRIPTION	SYM.
	LIST OF MATERIAL				
DECIMALS .X ± .05 .XX ± .01 .XXX ± .005	FRACTIONS 1/64 ANGLES 0° - 30'	TOLS.		THE TECHNICAL MATERIEL CORP. MAMARONECK, NEW YORK CORE, TOROID	
MATERIAL		FINAL APPROVAL	DATE		
FINISH		MECH. DES.	DATE		
		ELECT. DES.	DATE		
		CHECKED	DATE		
		DRAWN	DATE		
NOTICE TO PERSONS RECEIVING THIS DRAWING THE TECHNICAL MATERIEL CORPORATION claims proprietary right in the material disclosed hereon. This drawing is issued in confidence for engineering information only and may not be reproduced or used to manufacture anything shown hereon without permission from THE TECHNICAL MATERIEL CORPORATION to the user. This drawing is loaned for mutual assistance and is subject to recall at any time.				SIZE A	CODE IDENT. NO. 82679
				DWG NO. CI146	ISSUE
SCALE			SHEET OF		

IF IT IS FOUND DESIRABLE TO CHANGE ANY TOLERANCE OR OTHER DETAIL SPECIFIED ON THIS DRAWING NOTIFY THE PURCHASER PROMPTLY.

MAXIMUM ALLOWABLE TOLERANCES HAVE BEEN DETERMINED AND DEVIATIONS WILL BE CAUSE FOR REJECTION. REMOVE ALL BURRS AND SHARP EDGES

STANDARD DRAWING

CI-10003

A

USED ON

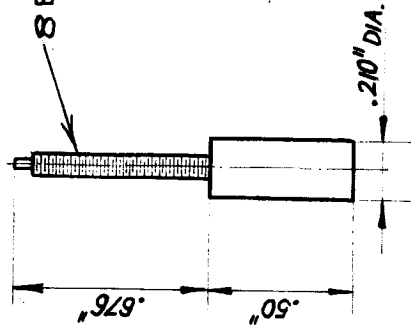
MODEL

PROJECT NO.

ASS'Y. NO.

DATE

AMCG-2#3



8 BA THREAD (ENGLISH)

NOTICE TO PERSONS RECEIVING THIS DRAWING

THE TECHNICAL MATERIEL CORPORATION claims proprietary right in the material disclosed hereon. This drawing is issued in confidence for engineering information only and may not be reproduced or used to manufacture anything shown hereon without permission from THE TECHNICAL MATERIEL COR. ORATION to the user. This drawing is loaned for mutual assistance and is subject to recall at any time.

Property of:

THE TECHNICAL MATERIEL CORPORATION
MAMARONECK, NEW YORK

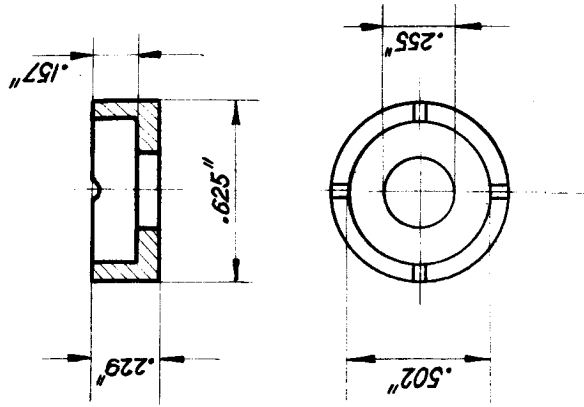
MFRS. TYPE NO. 210" X.5" (T11A)

ISSUE ITEM	CHANGED FROM	DATE	CN. NO.	DRAFTS	CHECKER	ENG. APP.
A 1	CHANGED	3/27/88				R.W.S.
TOLERANCES						
SCALE 5:0045-17						
DRILL, PUNCH, COMMERCIAL STOCK SIZES AND MANUFACTURERS TOLERANCES ARE NOT INCLUDED.						
ALL OTHERS	DEC. DIM. ± FRAC. DIM. ± ANGULAR DIM. ±					

REQ. ITEM	PART NO.	DESCRIPTION	SYMBOL
		TMC (Canada) LIMITED OTTAWA ONTARIO	
STOCK SIZE			
MATERIAL	WEIGHT PER PC.	CORE	
TYPE & TEMPER			
HEAT TREAT. SPEC.			
FINISH & SPEC. NO.			
DRAWN			
CHECKED			
ELEC. DES. APP.			
MECH. DES. APP.			
FINAL APPROVAL			
			CI-10003
			A

IF IT IS FOUND DESIRABLE TO CHANGE ANY TOLERANCE OR OTHER DETAIL SPECIFIED ON THIS DRAWING NOTIFY THE PURCHASER PROMPTLY.

MAXIMUM ALLOWABLE TOLERANCES HAVE BEEN DETERMINED AND DEVIATIONS WILL BE CAUSE FOR REJECTION. REMOVE ALL BURRS AND SHARP EDGES



NOTICE TO PERSONS RECEIVING THIS DRAWING

THE TECHNICAL MATERIEL CORPORATION claims proprietary right in the material disclosed hereon. This drawing is issued in confidence for engineering information only and may not be reproduced or used to manufacture anything shown hereon without permission from THE TECHNICAL MATERIEL CORPORATION to the user. This drawing is loaned for mutual assistance and is subject to recall at any time.

Property of:

THE TECHNICAL MATERIEL CORPORATION
MAMARONECK, NEW YORK

M.F.F.S. Type No. TMA

STANDARD DRAWING

CI-10004 A

USED ON

DATE

ASS'Y. NO.

PROJECT NO.

MODEL

AMC G-2 #3

REQ. ITEM	PART NO.	DESCRIPTION	SYMBOL
		TMC (Canada) LIMITED OTTAWA	
STOCK SIZE			
MATERIAL	WEIGHT PER PC.	CORE	
TYPE & TEMPER			
HEAT TREAT. SPEC.			
FINISH & SPEC. NO.			
DRAWN		R. W. Hammel	MECH. DES. APP.
CHECKED			FINAL APPROVAL
			CI-10004 A

A	CHANGED	2 SEPT 60	WHD	ENG APP.
ISSUE ITEM	CHANGED FROM	DATE	CN. NO. DRAFTS	CHECKER
TOLERANCES				
SCALE S-10045-17				
DRILL, PUNCH, COMMERCIAL STOCK SIZES AND MANUFACTURERS TOLERANCES ARE NOT INCLUDED.				
ALL OTHERS	DEC. DIM. ±	FRAC. DIM. ±	ANGULAR DIM. ±	

IF IT IS FOUND DESIRABLE TO CHANGE ANY TOLERANCE OR OTHER DETAIL SPECIFIED ON THIS DRAWING NOTIFY THE PURCHASER PROMPTLY.

MAXIMUM ALLOWABLE TOLERANCES HAVE BEEN DETERMINED AND DEVIATIONS WILL BE CAUSE FOR REJECTION. REMOVE ALL BURRS AND SHARP EDGES

STANDARD DRAWING

CI-10005 A

USED ON

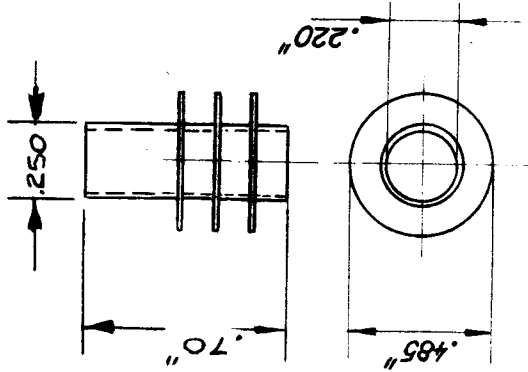
DATE

ASS'Y. NO.

PROJECT NO.

MODEL

AMCG-243



OPEN END TYPE.

MFRS. TYPE I.IIA (TIIA)

ISSUE ITEM	A 1	CHANGED	DATE	9/9/60	WHD	RMG.
		CHANGED FROM	DATE	CN. NO.	DRAFTS	CHECKER
TOLERANCES			SCALE 5:0045-17			
DIM. ±			DRILL, PUNCH, COMMERCIAL STOCK			
F.C. DIM. ±			SIZES AND MANUFACTURERS			
MOLECULAR DIM. ±			TOLERANCES ARE NOT INCLUDED.			

REQ. ITEM	PART NO.	DESCRIPTION	SYMBOL
		TMC (Canada) LIMITED	
		OTTAWA	ONTARIO
		POLYSTYRENE FORMER	
		MATERIAL	WEIGHT PER PC.
		TYPE & TEMPER	
		HEAT TREAT. SPEC.	
		FINISH & SPEC. NO.	
		DRAWN	ELEC. DES. APP.
		CHECKED	MECH. DES. APP.
		FINAL APPROVAL	
		CI-10005	A

IF IT IS FOUND DESIRABLE TO CHANGE ANY TOLERANCE OR OTHER DETAIL SPECIFIED ON THIS DRAWING NOTIFY THE PURCHASER PROMPTLY.

MAXIMUM ALLOWABLE TOLERANCES HAVE BEEN DETERMINED AND DEVIATIONS WILL BE CAUSE FOR REJECTION. REMOVE ALL BURRS AND SHARP EDGES

STANDARD DRAWING

CI-10006

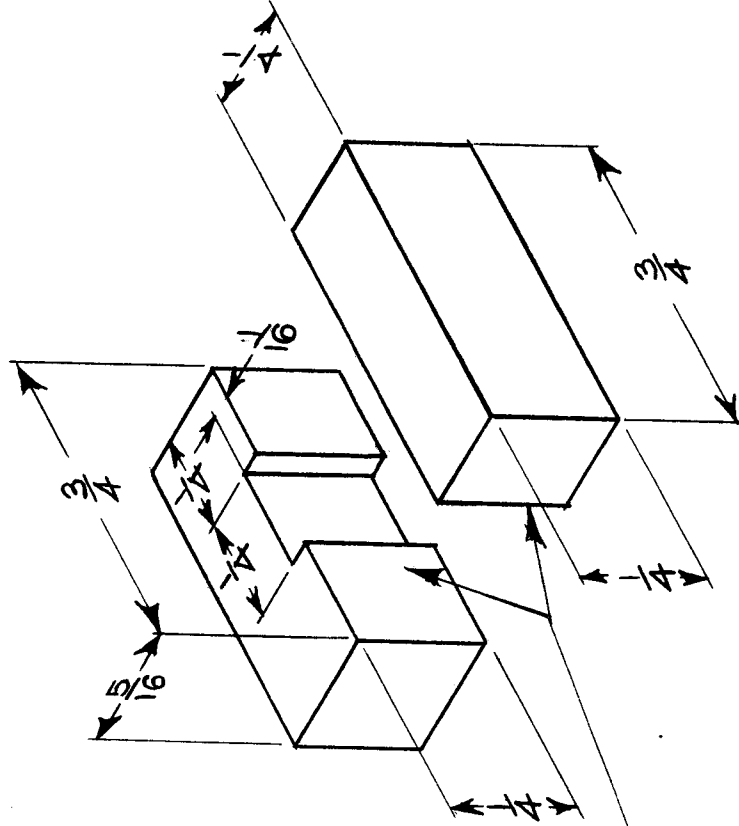
USED ON

MODEL

PROJECT NO.

ASSY. NO.

DATE



MATING SURFACES TO BE GROUND

REQ. ITEM	PART NO.	DESCRIPTION	SYMBOL
		TMC (Canada) LIMITED	ONTARIO
STOCK SIZE		TRANSFORMER CORE	
4E FERROXCUBE			
MATERIAL	WEIGHT PER PC.		
TYPE & TEMPER		DCM OCT. 20	M. M.
		DRAWN 58	MECH. DES. APP.
HEAT TREAT. SPEC.		CHECKED	FINAL APPROVAL
FINISH & SPEC. NO.			CI-10006

ISSUE ITEM	CHANGED FROM	DATE	CN. NO.	DRAFTS	CHECKER	ENG. APP.
ALL						
OTHERS						
TOLERANCES						
DEC. DIM. ±						
FRAC. DIM. ±						
ANGULAR DIM. ±						
DRILL, PUNCH, COMMERCIAL STOCK SIZES AND MANUFACTURERS TOLERANCES ARE NOT INCLUDED.						

IF IT IS FOUND DESIRABLE TO CHANGE ANY TOLERANCE OR OTHER DETAIL SPECIFIED ON THIS DRAWING NOTIFY THE PURCHASER PROMPTLY.

MAXIMUM ALLOWABLE TOLERANCES HAVE BEEN DETERMINED AND DEVIATIONS WILL BE CAUSE FOR REJECTION. REMOVE ALL BURRS AND SHARP EDGES

STANDARD DRAWING

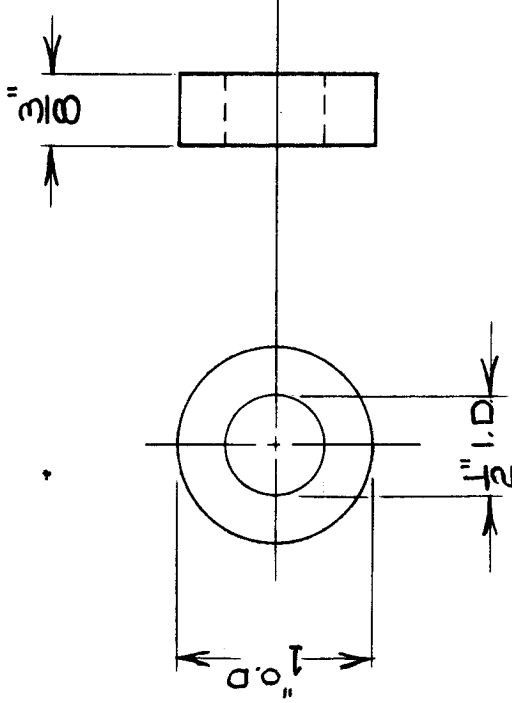
CI10007 A

USED ON

MODEL PROJECT NO. ASS'Y. NO. DATE

LMC CE5027

11/10/59



A	2	TOLERANCE 1/64 ADDED	1-9-63	7976	Yde	Yde
	1	REF. KEARFOTT DELETED				
ISSUE	ITEM	CHANGED FROM	DATE	CN. NO.	DRAFTS	CHECKER
			SCALE 1 : 1			
			DRILL, PUNCH, COMMERCIAL STOCK SIZES AND MANUFACTURERS TOLERANCES ARE NOT INCLUDED.			
ALL OTHERS	DEC. DIM. ±		FRAC. DIM. ±		ANGULAR DIM. ±	
	±		±		±	
	±		±		±	

REQ. ITEM	PART NO.	DESCRIPTION	SYMBOL
		TMC (Canada) LIMITED	
		OTTAWA	ONTARIO
		CORE TOROIDAL	
		DCM	
		DRAWN	
		CHECKED	
		ELC. DES. APP.	
		MECH. DES. APP.	
		FINAL APPROVAL	
		CI10007	A

STANDARD DRAWING

IF IT IS FOUND DESIRABLE TO CHANGE ANY TOLERANCE OR OTHER DETAIL SPECIFIED ON THIS DRAWING NOTIFY THE PURCHASER PROMPTLY.

MAXIMUM ALLOWABLE TOLERANCES HAVE BEEN DETERMINED AND DEVIATIONS WILL BE CAUSE FOR REJECTION. REMOVE ALL BURRS AND SHARP EDGES

USED ON

PROJECT NO.

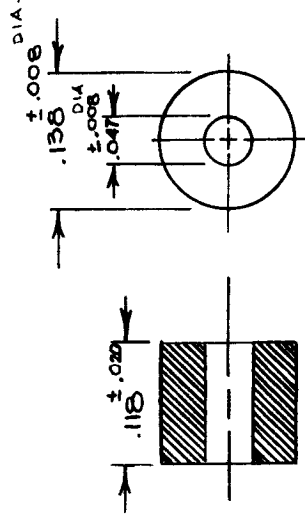
MODEL

DATE

LMC

21/11/60

CI 10008

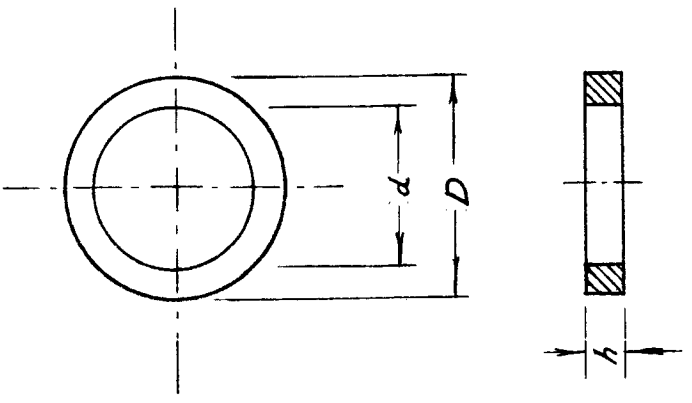


MFR. NO. - 56/590/65/3B

REQ. ITEM	PART NO.	DESCRIPTION	SYMBOL
		TMC(Canada) LIMITED OTTAWA ONTARIO	
		SHIELDING BEADS	
		JPC	M. W.
		DRAWN	ELEC. DES. APP.
		CHECKED	MECH. DES. APP.
		TYPE & TEMPER	FINAL APPROVAL
		HEAT TREAT. SPEC.	
		FINISH & SPEC. NO.	CI10008

ISSUE	ITEM	CHANGED FROM	DATE	CN. NO.	DRAFTS	CHECKER	ENG. APP.
TOLERANCES SCALE S10045-1 DIMENSIONS IN INCHES UNLESS OTHERWISE SPECIFIED DRILL, PUNCH, COMMERCIAL STOCK SIZES AND MANUFACTURERS TOLERANCES ARE NOT INCLUDED.							
ALL OTHERS	DEC. DIM. ± FRAC. DIM. ± ANGULAR DIM. ±						

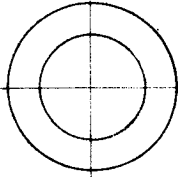
ISSUE	ITEM	CHANGED FROM	DATE	CN. NO.	DRAFTS	CHECKER	ENG. APP.	REQ.	ITEM	PART NO.	DESCRIPTION	SYMBOL

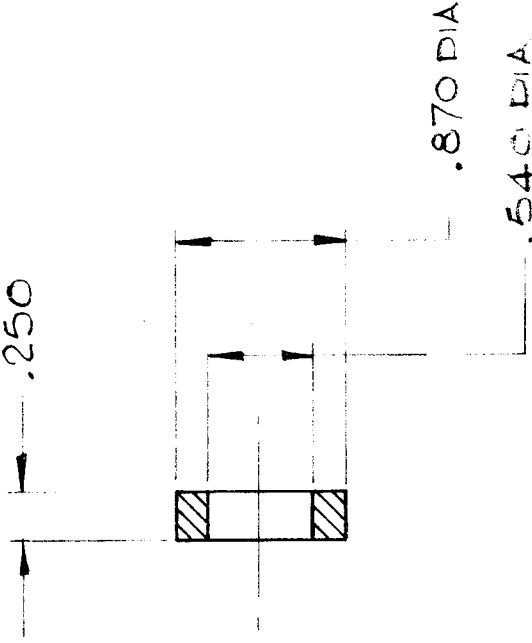


DIMENSIONS IN CENTIMETERS		DIMENSIONS IN INCHES		MANUFACTURER'S NUMBER
D	d	D	d	
3.6	2.3	1 7/16	7/16	K3 00501

	TMC (Canada) LIMITED OTTAWA ONTARIO		
		CORE, TOROIDAL	
MODEL	PROJECT NO.	ASSY. NO.	DATE
			15-4-64
USED ON			
MAXIMUM ALLOWABLE TOLERANCES HAVE BEEN DETERMINED AND DEVIATIONS WILL BE CAUSE FOR REJECTION. REMOVE ALL BURRS AND SHARP EDGES	IF IT IS FOUND DESIRABLE TO CHANGE ANY TOLERANCE OR OTHER DETAIL SPECIFIED ON THIS DRAWING NOTIFY THE PURCHASER PROMPTLY.	SCALE S10045-40 DIMENSIONS IN INCHES UNLESS OTHERWISE SPECIFIED DRILL, PUNCH, COMMERCIAL STOCK SIZES AND MANUFACTURERS TOLERANCES ARE NOT INCLUDED.	
TOLERANCES			
ALL OTHERS	DEC. DIM. ±	FRAC. DIM. ±	ANGULAR DIM. ±
		DRAWN	ELEC. DES. APP.
		R. DES.	<i>[Signature]</i>
		CHECKED	MECH. DES. APP.
			FINAL APPROVAL
		CI10009	

ISSUE	ITEM	CHANGED FROM	DATE	CN. NO.	DRAFTS	CHECKER	ENG. APP.	REQ.	ITEM	PART NO.	DESCRIPTION	SYMBOL
Ø		PROD. RELEASE	26 AUG 70 70		<i>[Signature]</i>		<i>[Signature]</i>					





MODEL	PROJECT NO.	DATE	STOCK SIZE
AMC-B	074/70	26 AUG 70	
USED ON			
MAXIMUM ALLOWABLE TOLERANCES HAVE BEEN DETERMINED AND DEVIATIONS WILL BE CAUSE FOR REJECTION. REMOVE ALL BURRS AND SHARP EDGES		IF IT IS FOUND DESIRABLE TO CHANGE ANY TOLERANCE OR OTHER DETAIL SPECIFIED ON THIS DRAWING NOTIFY THE PURCHASER PROMPTLY.	
TOLERANCES DEC. DIM. ± 0.015 ±0.005 FRAC. DIM. $\pm \frac{1}{64}$ ±0.015 ANGULAR DIM. $\pm 0' 30''$ ±0.005		SCALE $\frac{1}{1}$ DIMENSIONS IN INCHES UNLESS OTHERWISE SPECIFIED DRILL: PUNCH, COMMERCIAL STOCK SIZES AND MANUFACTURERS TOLERANCES ARE NOT INCLUDED.	
ALL OTHERS			

FERRITE MATERIAL TYPE & TEMPER HEAT TREAT. SPEC. FINISH & SPEC. NO.		TMC (Canada) LIMITED OTTAWA CORE TOROIDAL DRAWN CHECKED FINISH & SPEC. NO.	
SIMPSON 1/1/70		CI 10010-1-RCA	

ISSUE	ITEM	CHANGED FROM	DATE	CN. NO.	DRAFTS	CHECKER	ENG. APP.	REQ.	ITEM	PART NO.	DESCRIPTION	SYMBOL
Ø		PROD RELEASE	27 AUG 70		SB		NA					

AMC-83	074/70	27 AUG 70	DATE
MODEL	PROJECT NO.	ASS'Y. NO.	DATE
USED ON			
MAXIMUM ALLOWABLE TOLERANCES HAVE BEEN DETERMINED AND DEVIATIONS WILL BE CAUSE FOR REJECTION. REMOVE ALL BURRS AND SHARP EDGES		IF IT IS FOUND DESIRABLE TO CHANGE ANY TOLERANCE OR OTHER DETAIL SPECIFIED ON THIS DRAWING NOTIFY THE PURCHASER PROMPTLY.	
TOLERANCES DEC. DIM. $\pm 0/15$ FRAC. DIM. $\pm \frac{1}{64}$ ANGULAR DIM. $\pm 0' 30''$		SCALE 2:1 DIMENSIONS IN INCHES UNLESS OTHERWISE SPECIFIED DRILL: PUNCH, COMMERCIAL STOCK SIZES AND MANUFACTURERS TOLERANCES ARE NOT INCLUDED.	

TMC (Canada) LIMITED OTTAWA		CORE TOROIDAL	
DRAWN SIMBEN		ELEC. DES. APP. NA	
MATERIAL		WEIGHT PER PC.	
TYPE & TEMPER		HEAT TREAT. SPEC.	
CHECKED		MECH. DES. APP.	
CI 10011-3-RCA		FINAL APPROVAL	

PART NO.

ISSUE	ITEM	CHANGED FROM	DATE	CM. NO.	DRAFTS	CHECKER	ENG. APP.	REQ.	ITEM	PART NO.
Ø		RELEASED TO READN	25/40		JB	[Signature]	Ka 14			

MANUFACTURER'S PART N ^o	Ø/D	I/D	HEIGHT	L	100 TURNS	TEST FREQ	COLOUR CODE
T44-10	0.440	0.229	0.159	48 µH	18 MHZ	BLACK	
T68-2	0.690	0.370	0.190	115 µH	450 KHZ	RED	

PERMEABILITY TOLERANCE ± 2%

CI 10012 - T44-10

BASIC TMC N^o

MANFR'S PART N^o

STANDARD DRAWING

MANUFACTURER SA01-307

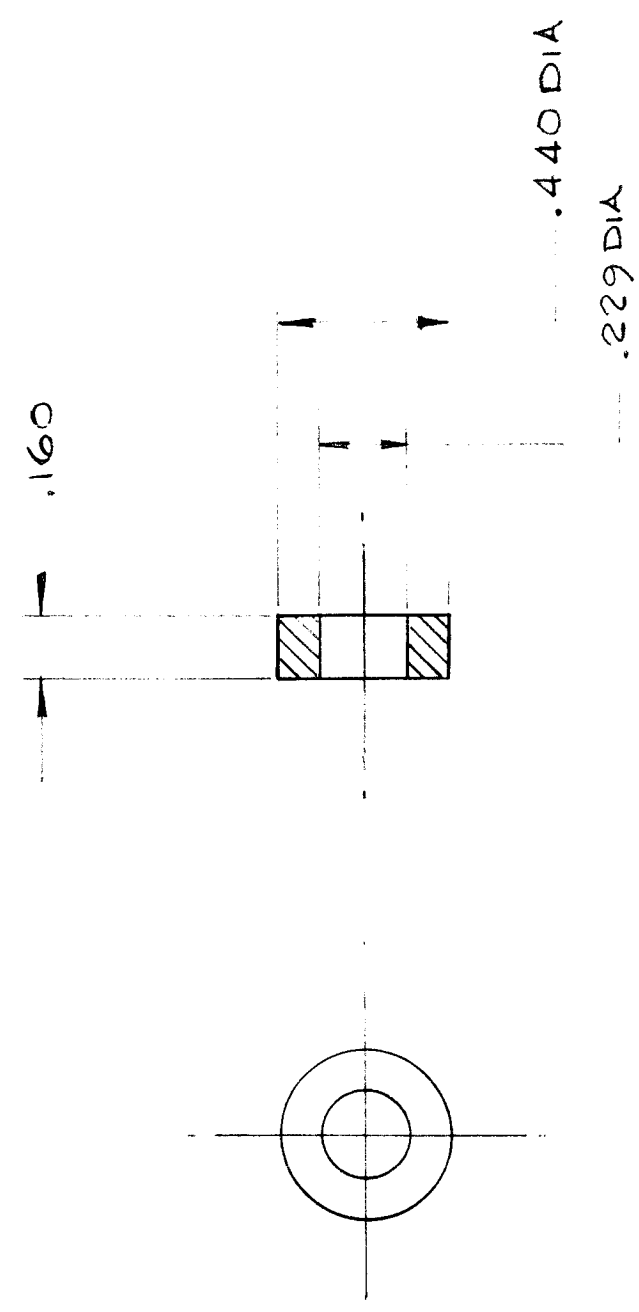
TMC (Canada) LIMITED
OTTAWA ONTARIO

CORE, TOROIDAL

MODEL	PROJECT NO.	ABS'Y. NO.	DATE
USED ON			
<p>MAXIMUM ALLOWABLE TOLERANCES HAVE BEEN DETERMINED AND DEVIATIONS WILL BE CAUSE FOR REJECTION. REMOVE ALL BURRS AND SHARP EDGES</p>		<p>IF IT IS FOUND DESIRABLE TO CHANGE ANY TOLERANCE OR OTHER DETAIL SPECIFIED ON THIS DRAWING NOTIFY THE PURCHASER PROMPTLY.</p>	
<p>TOLERANCES</p> <p>DEC. DIM. ± .X = .05</p> <p>FRAC. DIM. ± 1/64 .XX = .01</p> <p>ANGULAR DIM. ± 0' 30' .XXX = .005</p>			
<p>STOCK SIZE</p>		<p>WEIGHT PER PC.</p>	
<p>MATERIAL</p>		<p>TYPE & TEMPER</p>	
<p>HEAT TREAT. SPEC.</p>		<p>FINISH & SPEC. NO.</p>	
<p>DRAWN [Signature]</p>		<p>ELEC. DES. APP. [Signature]</p>	
<p>CHECKED [Signature]</p>		<p>MECH. DES. APP. [Signature]</p>	
<p>BARTLETT</p>		<p>FINAL APPROVAL [Signature]</p>	
<p>CI 10012</p>		<p>Ø</p>	

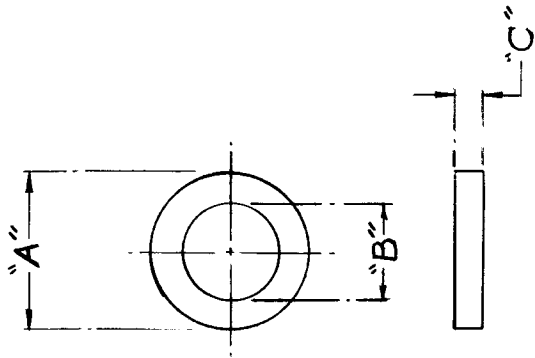
ISSUE	ITEM	CHANGED FROM	DATE	CN. NO.	DRAFTS	CHECKER	ENG. APP.	REQ.	ITEM	PART NO.	DESCRIPTION	SYMBOL
Ø		PROD RELEASE	22 AUG 70		AS							
AMC 83			07A 170		22 AUG 70		TMC (Canada) LIMITED OTTAWA ONTARIO					
MODEL			PROJECT NO.		ASSY. NO.		DATE		CORE TORROIDAL			
MAXIMUM ALLOWABLE TOLERANCES HAVE BEEN DETERMINED AND DEVIATIONS WILL BE CAUSE FOR REJECTION. REMOVE ALL BURRS AND SHARP EDGES			IF IT IS FOUND DESIRABLE TO CHANGE ANY TOLERANCE OR OTHER DETAIL SPECIFIED ON THIS DRAWING NOTIFY THE PURCHASER PROMPTLY.									
TOLERANCES			SCALE									
DEC. DIM. ± .015 FRAC. DIM. ± 1/64 ANGULAR DIM. ± 0'30"			DIMENSIONS IN INCHES UNLESS OTHERWISE SPECIFIED DRILL: PUNCH, COMMERCIAL STOCK SIZES AND MANUFACTURERS TOLERANCES ARE NOT INCLUDED.									
ALL OTHERS			STOCK SIZE MATERIAL TYPE & TEMPER HEAT TREAT. SPEC. FINISH & SPEC. NO.									
DRAWN			ELEC. DES. APP.		FINAL APPROVAL		MECH. DES. APP.					
CI 10012-T-68-2-RCA			Ø									

ISSUE	ITEM	CHANGED FROM	DATE	CN. NO.	DRAFTS	CHECKER	ENG. APP.	REQ.	ITEM	PART NO.	DESCRIPTION	SYMBOL
∅		PROD RELEASE	26 AUG 70		<i>[Signature]</i>							



AMC-B	074/70	26 AUG 70									TMC (Canada) LIMITED OTTAWA ONTARIO	
MODEL	PROJECT NO.	DATE	ASSY. NO.	STOCK SIZE	WEIGHT PER PC.	CORE TOROIDAL		DRAWN		ELEC. DES. APP.		MECH. DES. APP.
MAXIMUM ALLOWABLE TOLERANCES HAVE BEEN DETERMINED AND DEVIATIONS WILL BE CAUSE FOR REJECTION. REMOVE ALL BURRS AND SHARP EDGES			IF IT IS FOUND DESIRABLE TO CHANGE ANY TOLERANCE OR OTHER DETAIL SPECIFIED ON THIS DRAWING NOTIFY THE PURCHASER PROMPTLY.			FERRITE		MATERIAL		TYPE & TEMPER		CHECKED
TOLERANCES			SCALE 2:1			HEAT TREAT. SPEC.		FINISH & SPEC. NO.		CI 10012-T44-10-RCA		∅
ALL OTHERS	DEC. DIM. ± .015	FRAC. DIM. ± 1/64	ANGULAR DIM. ± 0° 30'	DIMENSIONS IN INCHES UNLESS OTHERWISE SPECIFIED			DRILL, PUNCH, COMMERCIAL STOCK SIZES AND MANUFACTURERS TOLERANCES ARE NOT INCLUDED.		FINAL APPROVAL			

ISSUE	ITEM	CHANGED FROM	DATE	CN. NO.	DRAFTS	CHECKER	ENG. APP.	REQ.	ITEM	PART NO.	DESCRIPTION	SYMBOL
Ø		PROD RELEASE	12 MAR 73		C.C.							

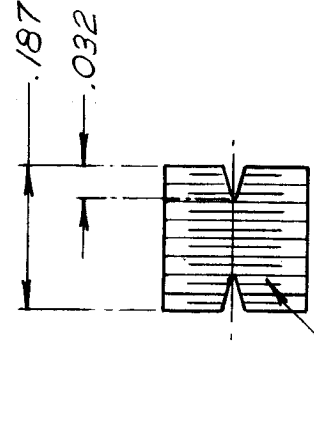
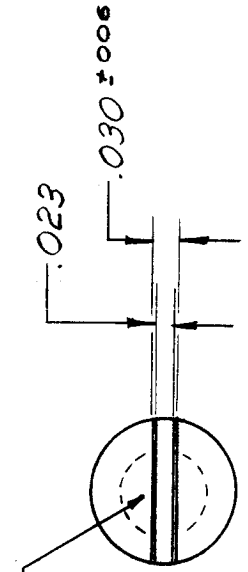


TMC PART NO.	MANUFACTURER'S PART NO.	DIMENSIONS		
		A	B	C
CI 10015-1	CF-118	.080	.050	.025
CI 10015-2	CF-119	.100	.070	.030
CI 10015-3	CF-120	.155	.088	.051
CI 10015-4	CF-101	.230	.120	.060
CI 10015-5	CF-121	.300	.125	.188
CI 10015-6	CF-102	.375	.187	.125
CI 10015-7	CF-108	.500	.312	.250
CI 10015-8	CF-111	.870	.540	.250
CI 10015-9	CF-122	1.000	.500	.250
CI 10015-10	CF-114	1.250	.750	.375
CI 10015-11	CF-117	1.875	1.375	.375
CI 10015-12	CF-123	2.400	1.400	.500
CI 10015-13	CF-124	3.500	2.000	.500
CI 10015-14	CF-125	5.810	2.500	.625

MANUFACTURER: INDIANA GENERAL

STANDARD	PROJECT NO.	12 MAR 73	DATE
MODEL	ASS'Y. NO.		
USED ON			
MAXIMUM ALLOWABLE TOLERANCES HAVE BEEN DETERMINED AND DEVIATIONS WILL BE CAUSE FOR REJECTION REMOVE ALL BURRS AND SHARP EDGES		IF IT IS FOUND DESIRABLE TO CHANGE ANY TOLERANCE OR OTHER DETAIL SPECIFIED ON THIS DRAWING NOTIFY THE PURCHASER PROMPTLY.	
TOLERANCES			
ALL OTHERS	DEC DIM. ± .005	FRAC DIM. ± 1/64	ANGULAR DIM. ± 0°30'
	.XX = .01	.XXX = .005	
SCALE		DIMENSIONS IN INCHES UNLESS OTHERWISE SPECIFIED	
DRILL: PUNCH. COMMERCIAL STOCK SIZES AND MANUFACTURERS TOLERANCES ARE NOT INCLUDED.		HEAT TREAT. SPEC.	
STOCK SIZE		MATERIAL	
TYPE & TEMPER		WEIGHT PER PC.	
DRAWN		ELEC. DES APP.	
CHECKED		MECH. DES APP.	
FINAL APPROVAL		FINISH & SPEC. NO.	
C. CHARLES		CI 10015	
TMC (Canada) LIMITED OTTAWA		TOROID	

ISSUE	ITEM	CHANGED FROM	DATE	CN. NO.	DRAFTS	CHECKER	ENG. APP.	REQ.	ITEM	PART NO.	DESCRIPTION	SYMBOL
Φ		PROD RELEASE	8 MAR 73		C.C.							



MATERIAL: POWDERED IRON
 FINISH: MOISTURE PROOFED

MANUFACTURER: CAMBION
 (PART NO. 3225-4)

MMX-3		8 MARCH 73	
MODEL	PROJECT NO.	ASSY. NO.	DATE
USED ON			
MAXIMUM ALLOWABLE TOLERANCES HAVE BEEN DETERMINED AND DEVIATIONS WILL BE CAUSE FOR REJECTION. REMOVE ALL BURRS AND SHARP EDGES.		IF IT IS FOUND DESIRABLE TO CHANGE ANY TOLERANCE OR OTHER DETAIL SPECIFIED ON THIS DRAWING NOTIFY THE PURCHASER PROMPTLY.	
TOLERANCES DEC. DIM. ± .05 FRACTIONAL DIM. ± 1/64 ANGULAR DIM. ± 0° 30'		SCALE 4:1 DIMENSIONS IN INCHES UNLESS OTHERWISE SPECIFIED DRILL: PUNCH, COMMERCIAL STOCK SIZES AND MANUFACTURERS TOLERANCES ARE NOT INCLUDED.	
ALL OTHERS	TMC (Canada) LIMITED OTTAWA CORE, TUNING		DRAWN C. CHARLES
	STOCK SIZE MATERIAL TYPE & TEMPER HEAT TREAT. SPEC. FINISH & SPEC. NO.		ELEC. DES. APP. MECH. DES. APP. FINAL APPROVAL CI 10016
			Φ