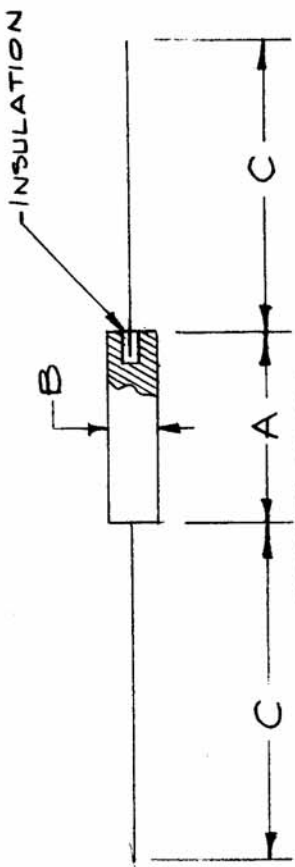


CI-114 C

USED ON
 ASSY. NO. DATE

STANDARD DRAWING

LEADS - TINNED COPPER



NOTICE TO PERSONS RECEIVING THIS DRAWING

THE TECHNICAL MATERIEL CORPORATION claims proprietary right in the material disclosed hereon. This drawing is issued in confidence for engineering information only and may not be reproduced or used to manufacture anything shown hereon without permission from THE TECHNICAL MATERIEL CORPORATION to the user. This drawing is loaned for mutual assistance and is subject to recall at any time.

Property of:

THE TECHNICAL MATERIEL CORPORATION
 MAMARONECK, NEW YORK

TMC NO.	MFG.	MFG. NO.	CORE MAT'L.	DIM.			USED ON
				A	B	C	
CI-114	SEE MFG CHART	SEE MFG CHART	POWDERED IRON	5/8"	3/16"	1/2"	GPR
CI-114-1	NATIONAL MOLDITE CO.	P324	P-FERRITE	1"	1/4"	1/2"	MSR-3
CI-114-2	STACKPOLE		G2	5/8	3/8	1/2	PAL 350

MFR. CHART

MANUFACTURER	MFR. CAT. NO.	REF TMC NO
STACKPOLE CARBON CO.	BB-1271	CI-114
QUALITY COMPONENTS INC.	QSIG KP-198 X 5/8	CI-114

REQ. ITEM	PART NO.	DESCRIPTION	SYMBOL
C 1	3543	11-22-60	
B 2	2	4/23/58	
A 1	1	4/10/58	

ISSUE ITEM	CHANGED FROM	DATE	CH. NO.	DRAFTS	CHECKER	ENG. APP.

TYPE & TEMPER	HEAT TREAT. SPEC.	RE-DRAWN	CHECKED	FINAL APPROVAL
		16 4/10/58		

FINISH & SPEC. NO.
CI-114 C