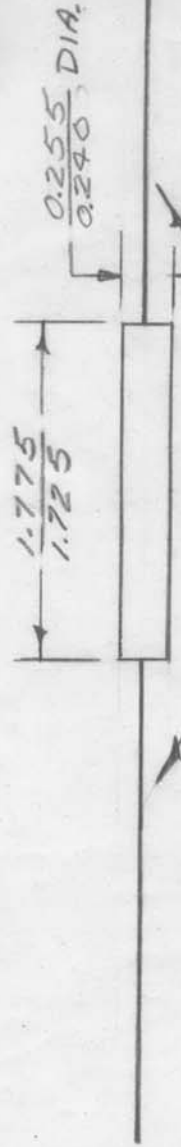


STANDARD DRAWING

IF IT IS FOUND DESIRABLE TO CHANGE ANY TOLERANCE OR OTHER DETAIL SPECIFIED ON THIS DRAWING NOTIFY THE PURCHASER PROMPTLY.

MAXIMUM ALLOWABLE TOLERANCES HAVE BEEN DETERMINED AND DEVIATIONS WILL BE CAUSE FOR REJECTION. REMOVE ALL BURRS AND SHARP EDGES

CORE STRENGTH: 15 POUNDS MIN ON 1 INCH CENTERS.
 SURFACE RESISTANCE: 450 MEGOHMS MIN. ON 1/4 INCH CENTERS
 FREQUENCY RANGE: 500 KC TO 10 MC.
 MATERIAL: CARBONYL E' OR EQUIVALENT.



WIRE LEADS - 2 1/2" LONG ± 1/8
 PHOSPHOR-BRONZE OR TINNED COPPER

CI 102 B
 USED ON
 PROJECT NO. A-337
 ASSY. NO.
 DATE 11-9-53

Req. Per UNIT
 2 XFA

5401-140(4844) FOR
 5401-361(CTB-192) PURCHASING ONLY

REQ. ITEM	PART NO.	DESCRIPTION	SYMBOL
—	—	THE TECHNICAL MATERIEL CORP. MAMARONECK. NEW YORK	
STOCK SIZE	—	CORE,	
MATERIAL	—	POWDERED IRON	
WEIGHT PER PC.	—		
TYPE & TEMPER	—	16 11-9-53	A. J. J. WJC
HEAT TREAT. SPEC.	—	DRAWN	ELEC. DES. APP.
FINISH & SPEC. NO.	—	CHECKED	MECH. DES. APP.
		FINAL APPROVAL	
		CI 102	B

ISSUE ITEM	CHANGED FROM	DATE	CN. NO.	DRAFTS	CHECKER	ENG. APP.
B -	SPECS. ADDED, NOTE REK DIM CHG	11/9/53	1	15490	AN. J.	
A 1	REDRAWN WITH CHANGES	11/9/53	1	15490	AN. J.	
TOLERANCES						
ALL DEC. DIM. ±	SCALE					
OTHERS FRAC. DIM. ±	DRILL, PUNCH, COMMERCIAL STOCK					
ANGULAR DIM. ±	SIZES AND MANUFACTURERS					
	TOLERANCES ARE NOT INCLUDED.					