
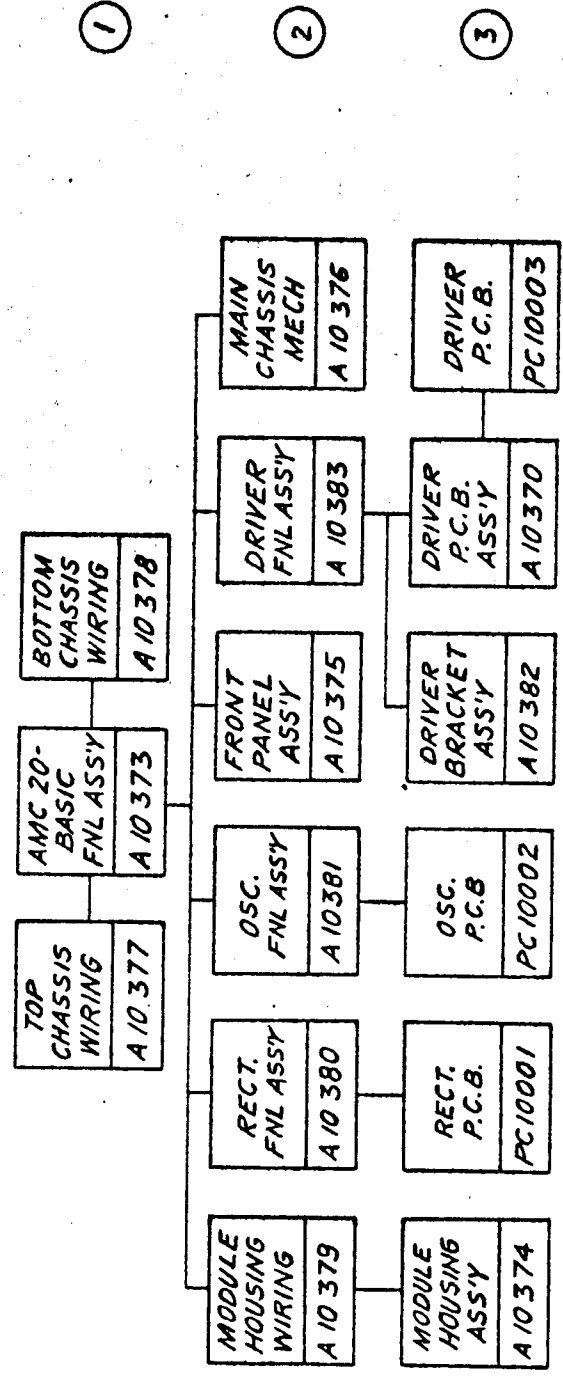


ISSUE	ITEM	CHANGED FROM	DATE	CN. NO.	DRAFTER	CHECKER	ENG. APP.	REQ.	ITEM	PART NO.	DESCRIPTION	SYMBOL
-------	------	--------------	------	---------	---------	---------	-----------	------	------	----------	-------------	--------

To be reviewed


LEVEL



AMC 20	PROJECT NO. 020/65	DATE 28-10-65	ASSY. NO.	USED ON
MODEL	TMC (Canada) LIMITED OTTAWA ONTARIO			
CHART, UNIT BREAKDOWN				
AMC 20 - BASIC				
TOLERANCES		ELEC. DES. APP. <i>BBJ</i>		
DEC. DIM. ±		DRAWN <i>[Signature]</i>		
FRAC. DIM. ±		CHECKED <i>[Signature]</i>		
ANGULAR DIM. ±		MECH. DES. APP.		
IF IT IS FOUND DESIRABLE TO CHANGE ANY TOLERANCE OR OTHER DETAIL SPECIFIED ON THIS DRAWING NOTIFY THE PURCHASER PROMPTLY.		FINAL APPROVAL		
DIMENSIONS IN INCHES UNLESS OTHERWISE SPECIFIED		CH 10120		
DRILL, PUNCH, COMMERCIAL STOCK SIZES AND MANUFACTURERS TOLERANCES ARE NOT INCLUDED.				

CH 10/22

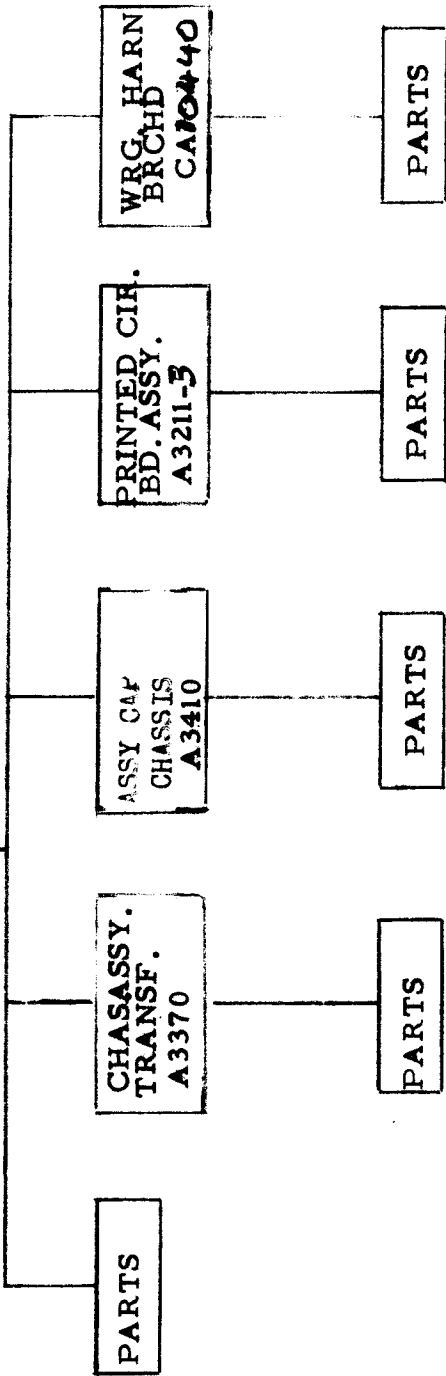
IF IT IS FOUND DESIRABLE TO CHANGE ANY TOLERANCE OR OTHER DETAIL SPECIFIED ON THIS DRAWING NOTIFY THE PURCHASER PROMPTLY.

MAXIMUM ALLOWABLE TOLERANCES HAVE BEEN DETERMINED AND DEVIATIONS WILL BE CAUSE FOR REJECTION. REMOVE ALL BURRS AND SHARP EDGES

USED ON

MODEL	PROJECT NO.	ASSY. NO.	DATE
VLRA-1		AX433	12/26/63
LFSA-1		AX433	12/26/63
LESB-1		AX433	12/26/63
VLRE-1	035/66	AX433	12/26/63

PWR. SUP.
ASSY.
AX433



REQ. ITEM	PART NO.	DESCRIPTION	SYMBOL
		TMC (Canada) LIMITED OTTAWA ONTARIO	
		CHART. UNIT BREAKDOWN (POWER SUPPLY)	
STOCK SIZE			
MATERIAL	WEIGHT PER PC.		
TYPE & TEMPER		DRAWN	ELEC. DES. APP. MECH. DES. APP.
HEAT TREAT. SPEC.		CHECKED	FINAL APPROVAL
FINISH & SPEC. NO.			CH10122

ISSUE	ITEM	CHANGED FROM	DATE	CN. NO.	DRAFTS	CHECKER	ENG. APP.

TOLERANCES		SCALE
DEC. DIM. ±		DIMENSIONS IN INCHES
FRAC. DIM. ±		UNLESS OTHERWISE SPECIFIED
ANGULAR DIM. ±		DRILL, PUNCH, COMMERCIAL STOCK
		SIZES AND MANUFACTURERS
		TOLERANCES ARE NOT INCLUDED.

CH 10123

ISSUE	ITEM	CHANGED FROM	DATE	CN. NO.	DRAFTS	CHECKER	ENG. APP.	REQ.	ITEM	PART NO.	DESCRIPTION	SYMBOL
A		REV. PER CEMN	12-7-66	028	RD	<i>[Signature]</i>	<i>[Signature]</i>					
B		REV. PER CEMN	19 OCT 70	843	<i>[Signature]</i>		<i>[Signature]</i>					
C		REV. PER CEMN	16 MAY 73	1234	<i>[Signature]</i>							

PSP 500

FINAL ASSY
A 10400

FRONT PANEL ASSY
A 10404

MAIN CHASSIS ASSY
A 10401

L. S. ASSY
A 10402

R. S. ASSY
A 10403

RESISTOR ASSY SCREEN
A10493

WIRING HARNESS
CA10437

T. B. H.V. RESISTOR
A 10396

T. B. RESISTOR
A 10397

T. B. RECTIFIER
A. J0398

H.V. RECTIFIER ASSY
A11037

SOLID STATE RELAY ASSY
A11081

SCREEN REGULATOR ASSY
A10721

RESISTOR ASSY
A 10405

ARCHARD

TMC (Canada) LIMITED
OTTAWA ONTARIO

CHART UNIT BREAKDOWN

MODEL	028/66	PROJECT NO.	17-3-66	DATE	
USED ON					
MAXIMUM ALLOWABLE TOLERANCES HAVE BEEN DETERMINED AND DEVIATIONS WILL BE CAUSE FOR REJECTION. REMOVE ALL BURRS AND SHARP EDGES			IF IT IS FOUND DESIRABLE TO CHANGE ANY TOLERANCE OR OTHER DETAIL, SPECIFIED ON THIS DRAWING NOTIFY THE PURCHASER PROMPTLY.		
TOLERANCES			SCALE NTS		
DEC. DIM. ±	DIMENSIONS IN INCHES		UNLESS OTHERWISE SPECIFIED		
FRAC. DIM. ±	DRILL, PUNCH, COMMERCIAL STOCK		SIZES AND MANUFACTURERS		
ANGULAR DIM. ±	TOLERANCES ARE NOT INCLUDED.				
ALL OTHERS					

STOCK SIZE		WEIGHT PER PC.	
MATERIAL		TYPE & TEMPER	
HEAT TREAT. SPEC.		FINISH & SPEC. NO.	
DRAWN		CHECKED	
ELEC. DES. APP.		MECH. DES. APP.	
RD		FINAL APPROVAL	
		CH 10123	
		C	

CH 10125

ISSUE	ITEM	CHANGED FROM	DATE	CN. NO.	DRAFTS	CHECKER	ENG. APP.	REQ.	ITEM	PART NO.	DESCRIPTION	SYMBOL

CHASSIS ASS'Y
POWER SUPPLY
A 5129

TERM. BD. ASS'Y
POWER SUPPLY
A 4336-4

WRG. HARN. BRCHD.
CA 1170

LEAD, ELEC.
CA 409-32-2.00
2 REQ'D

RASSB	A 5131	A 5124	MARCH 21/66	DATE	
RARD	027/66	ASSY. NO.			

MODEL	PROJECT NO.	USED ON			

MAXIMUM ALLOWABLE TOLERANCES HAVE BEEN DETERMINED AND DEVIATIONS WILL BE CAUSE FOR REJECTION. REMOVE ALL BURRS AND SHARP EDGES	IF IT IS FOUND DESIRABLE TO CHANGE ANY TOLERANCE OR OTHER DETAIL SPECIFIED ON THIS DRAWING NOTIFY THE PURCHASER PROMPTLY.
TOLERANCES	
DEC. DIM. ± FRAC. DIM. ± ANGULAR DIM. ±	SCALE DIMENSIONS IN INCHES UNLESS OTHERWISE SPECIFIED DRILL, PUNCH, COMMERCIAL STOCK SIZES AND MANUFACTURERS TOLERANCES ARE NOT INCLUDED.

TMC (Canada) LIMITED OTTAWA	CHASSIS ASS'Y POWER SUPPLY CHART, UNIT BREAKDOWD R PL	STOCK SIZE MATERIAL TYPE & TEMPER HEAT TREAT. SPEC. FINISH & SPEC. NO.	WEIGHT PER PC. DRAWN CHECKED JOHN STON	ELEC. DES. APP. MECH. DES. APP.	FINAL APPROVAL CH10125
--------------------------------	---	--	---	------------------------------------	---------------------------

CH 10126

ISSUE	ITEM	CHANGED FROM	DATE	CN. NO.	DRAFTS	CHECKER	ENG. APP.	REQ.	ITEM	PART NO.	DESCRIPTION	SYMBOL

REF. DWGS LOOSE ITEMS

RECEIVER DEMOD. CONTROL

RARB-1 FINAL ASS'Y A 5192

6 REQ'D

RECEIVER FS TONE A 4373

RECEIVER ANALOG A 4374

RECEIVER SUB ASSY A 5124

PLATE ASS'Y REAR A 5126

SUB CHASSIS ASS'Y A 5127

PLATE ASS'Y L SIDE A 5128-1

PLATE ASS'Y R SIDE A 5128-2

CHASSIS ASS'Y PWR. SUP. A 5129

CHASSIS ASS'Y MAIN A 5130-2

WIRING HARNESS BRCHD CA1181

2 REQ'D

COVERS TOP & BOTTOM MS4666

PLATE COVER REAR MS4692

CHASSIS ASS'Y PC BD A 5188

RECEIVER, DEMODULATOR CONTROL

CHART, UNIT BREAK DOWN

RPL

DRAWN

CHECKED

JOHNSTON

ELEC. DES. APP.

MECH. DES. APP.

FINAL APPROVAL

CH 10126

TMC (Canada) LIMITED
OTTAWA ONTARIO

MAXIMUM ALLOWABLE TOLERANCES HAVE BEEN DETERMINED AND DEVIATIONS WILL BE CAUSE FOR REJECTION. REMOVE ALL BURRS AND SHARP EDGES

IF IT IS FOUND DESIRABLE TO CHANGE ANY TOLERANCE OR OTHER DETAIL SPECIFIED ON THIS DRAWING NOTIFY THE PURCHASER PROMPTLY.

SCALE

DIMENSIONS IN INCHES UNLESS OTHERWISE SPECIFIED

DRILL, PUNCH, COMMERCIAL STOCK SIZES AND MANUFACTURERS TOLERANCES ARE NOT INCLUDED.

CH 10127

ISSUE	ITEM	CHANGED FROM	DATE	CN. NO.	DRAFTS	CHECKER	ENG. APP.	REQ.	ITEM	PART NO.	DESCRIPTION	SYMBOL
											<div style="border: 1px solid black; padding: 5px; margin: 0 auto; width: 80%;"> <p style="text-align: center;">REF. DWGS LOOSE ITEMS</p> </div>	
											<div style="border: 1px solid black; padding: 5px; margin: 0 auto; width: 80%;"> <p style="text-align: center;">REMOTE SELECTOR MONITOR</p> </div>	
											<div style="border: 1px solid black; padding: 5px; margin: 0 auto; width: 80%;"> <p style="text-align: center;">RASB-1 FINAL ASS'Y A 5191</p> </div>	
											<div style="border: 1px solid black; padding: 5px; margin: 0 auto; width: 80%;"> <p style="text-align: center;">6 REQ'D</p> </div>	
											<div style="border: 1px solid black; padding: 5px; margin: 0 auto; width: 80%;"> <p style="text-align: center;">KEYER FS TONE A 4372</p> </div>	
											<div style="border: 1px solid black; padding: 5px; margin: 0 auto; width: 80%;"> <p style="text-align: center;">X MTR ANALOG A 4371</p> </div>	
											<div style="border: 1px solid black; padding: 5px; margin: 0 auto; width: 80%;"> <p style="text-align: center;">RASB-1 SUB ASSY A 5131</p> </div>	
											<div style="border: 1px solid black; padding: 5px; margin: 0 auto; width: 80%;"> <p style="text-align: center;">2 REQ'D</p> </div>	
											<div style="border: 1px solid black; padding: 5px; margin: 0 auto; width: 80%;"> <p style="text-align: center;">COVERS TOP & BOTTOM M 54666</p> </div>	
											<div style="border: 1px solid black; padding: 5px; margin: 0 auto; width: 80%;"> <p style="text-align: center;">PLATE COVER REAR M 54692</p> </div>	
											<div style="border: 1px solid black; padding: 5px; margin: 0 auto; width: 80%;"> <p style="text-align: center;">PLATE ASS'Y REAR A 5133</p> </div>	
											<div style="border: 1px solid black; padding: 5px; margin: 0 auto; width: 80%;"> <p style="text-align: center;">LEAD ELEC. CA 409-111-2-00</p> </div>	
											<div style="border: 1px solid black; padding: 5px; margin: 0 auto; width: 80%;"> <p style="text-align: center;">WIRING HARN. BRCHD CA 1182</p> </div>	
											<div style="border: 1px solid black; padding: 5px; margin: 0 auto; width: 80%;"> <p style="text-align: center;">SUB CHASSIS ASS'Y A 5134</p> </div>	
											<div style="border: 1px solid black; padding: 5px; margin: 0 auto; width: 80%;"> <p style="text-align: center;">PANEL ASS'Y FRONT A 5132</p> </div>	
											<div style="border: 1px solid black; padding: 5px; margin: 0 auto; width: 80%;"> <p style="text-align: center;">CHASSIS ASS'Y MAIN A 5130-1</p> </div>	
											<div style="border: 1px solid black; padding: 5px; margin: 0 auto; width: 80%;"> <p style="text-align: center;">CHASSIS ASS'Y PC. BD A 5188</p> </div>	
											<div style="border: 1px solid black; padding: 5px; margin: 0 auto; width: 80%;"> <p style="text-align: center;">NPL</p> </div>	
											<div style="border: 1px solid black; padding: 5px; margin: 0 auto; width: 80%;"> <p style="text-align: center;">NPL</p> </div>	
											<div style="border: 1px solid black; padding: 5px; margin: 0 auto; width: 80%;"> <p style="text-align: center;">PLATE ASS'Y R SIDE A 5128-2</p> </div>	
											<div style="border: 1px solid black; padding: 5px; margin: 0 auto; width: 80%;"> <p style="text-align: center;">PLATE ASS'Y L SIDE A 5128-1</p> </div>	
											<div style="border: 1px solid black; padding: 5px; margin: 0 auto; width: 80%;"> <p style="text-align: center;">2 REQ'D</p> </div>	
											<div style="border: 1px solid black; padding: 5px; margin: 0 auto; width: 80%;"> <p style="text-align: center;">6 REQ'D</p> </div>	

RASB-1	027/66	A 5191	MAR. 21/66	
MODEL	PROJECT NO.	ASS'Y. NO.	DATE	
USED ON				
<div style="border: 1px solid black; padding: 5px;"> <p style="text-align: center;">TOLERANCES</p> </div>				
MAXIMUM ALLOWABLE TOLERANCES HAVE BEEN DETERMINED AND DEVIATIONS WILL BE CAUSE FOR REJECTION. REMOVE ALL BURRS AND SHARP EDGES		IF IT IS FOUND DESIRABLE TO CHANGE ANY TOLERANCE OR OTHER DETAIL SPECIFIED ON THIS DRAWING NOTIFY THE PURCHASER PROMPTLY.		
SCALE				
DIMENSIONS IN INCHES UNLESS OTHERWISE SPECIFIED				
DRILL, PUNCH, COMMERCIAL STOCK SIZES AND MANUFACTURERS TOLERANCES ARE NOT INCLUDED.				
ALL OTHERS			JOHNSTON FINAL APPROVAL	
		CHART. UNIT BREAKDOWN		CH 10127

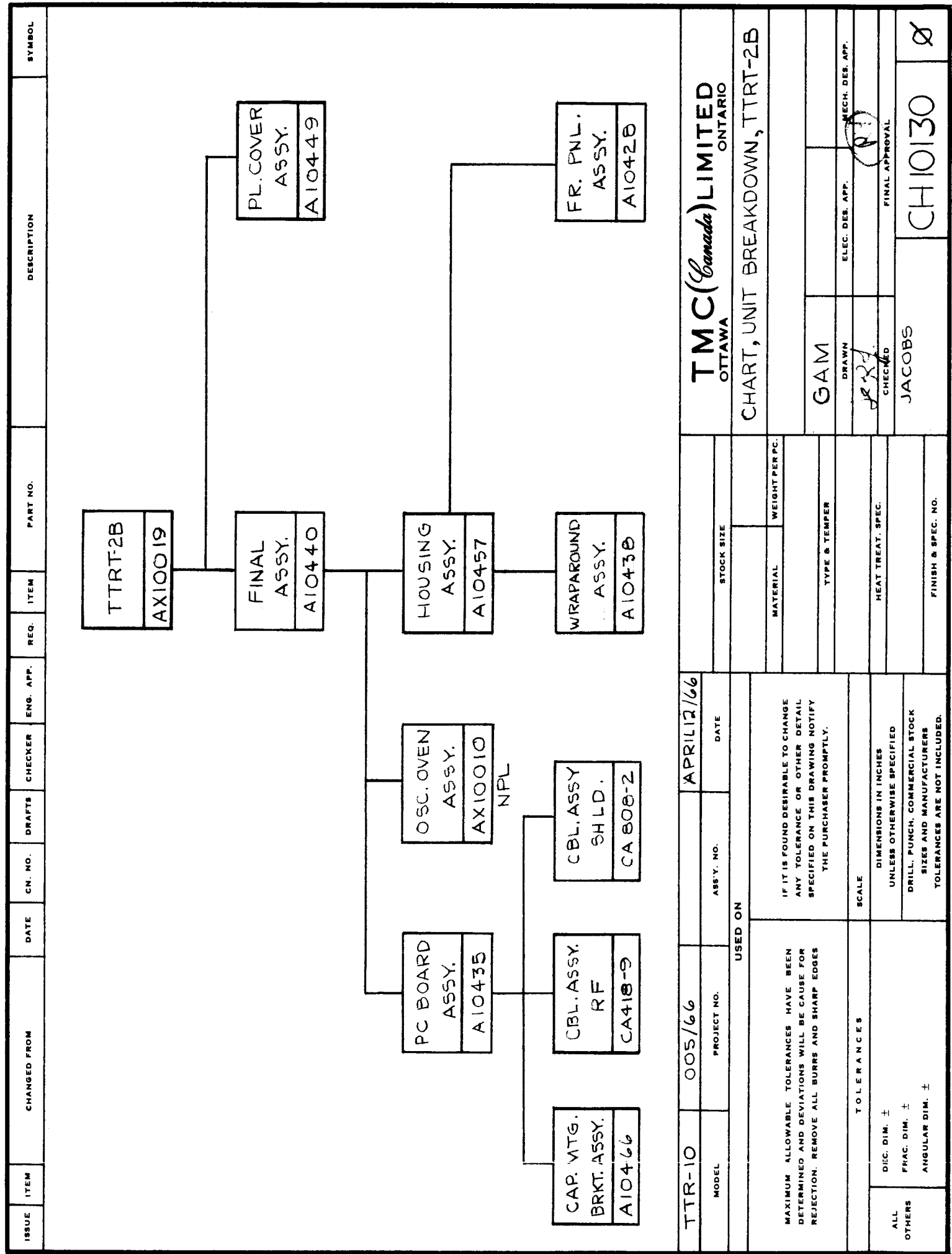
TMC (Canada) LIMITED
OTTAWA ONTARIO

REMOTE SELECTOR / MONITOR

CH 10128

ISSUE	CHANGED FROM	DATE	CN. NO.	DRAFTS	CHECKER	ENG. APP.	REQ.	ITEM	PART NO.	DESCRIPTION	SYMBOL
										<div style="border: 1px solid black; padding: 5px; margin: 5px auto; width: 80%;"> XTAL CUSTOMER OPTION </div> <div style="display: flex; justify-content: space-around; margin-top: 20px;"> <div style="border: 1px solid black; padding: 5px; text-align: center; width: 45%;"> AX10010 OSCILLATOR OVEN ASSY. </div> <div style="border: 1px solid black; padding: 5px; text-align: center; width: 45%;"> A10399 PC BD. ASSY. </div> </div> <div style="display: flex; justify-content: space-around; margin-top: 20px;"> <div style="border: 1px solid black; padding: 5px; text-align: center; width: 45%;"> A10427 BRACKET, CRYSTAL ASSY. </div> </div>	
MODEL		PROJECT NO.		ASSY. NO.		DATE		STOCK SIZE		TMC (Canada) LIMITED OTTAWA ONTARIO	
AX 10010		005/66				MAR. 28/66				CHART, UNIT BREAKDOWN	
MAXIMUM ALLOWABLE TOLERANCES HAVE BEEN DETERMINED AND DEVIATIONS WILL BE CAUSE FOR REJECTION. REMOVE ALL BURRS AND SHARP EDGES		TOLERANCES DEC. DIM. ± FRAC. DIM. ± ANGULAR DIM. ±		IF IT IS FOUND DESIRABLE TO CHANGE ANY TOLERANCE OR OTHER DETAIL SPECIFIED ON THIS DRAWING NOTIFY THE PURCHASER PROMPTLY.		SCALE NTS. DIMENSIONS IN INCHES UNLESS OTHERWISE SPECIFIED DRILL, PUNCH, COMMERCIAL STOCK SIZES AND MANUFACTURERS TOLERANCES ARE NOT INCLUDED.		MATERIAL		DRAWN	
								TYPE & TEMPER		CHECKED	
ALL OTHERS								RPL		AX 10010	
								HEAT TREAT. SPEC.		ELEC. DES. APP. MECH. DES. APP.	
								FINISH & SPEC. NO.		FINISH APPROVAL	
								LARGER		CH 10128	

CH 10/30



TMC (Canada) LIMITED
OTTAWA ONTARIO

CHART, UNIT BREAKDOWN, TTRT-2B

STOCK SIZE	
MATERIAL	WEIGHT PER PC.
TYPE & TEMPER	
HEAT TREAT. SPEC.	
FINISH & SPEC. NO.	
GAM	
DRAWN	ELEC. DES. APP.
CHECKED	MECH. DES. APP.
JACOBS	FINAL APPROVAL
CHI0130	Ø

APRIL 12/66

005/66

TTR-10

PROJECT NO.	ASSY. NO.	DATE
USED ON		
MAXIMUM ALLOWABLE TOLERANCES HAVE BEEN DETERMINED AND DEVIATIONS WILL BE CAUSE FOR REJECTION. REMOVE ALL BURRS AND SHARP EDGES	IF IT IS FOUND DESIRABLE TO CHANGE ANY TOLERANCE OR OTHER DETAIL SPECIFIED ON THIS DRAWING NOTIFY THE PURCHASER PROMPTLY.	
TOLERANCES	SCALE	
DEC. DIM. ±	DIMENSIONS IN INCHES	
FRAC. DIM. ±	UNLESS OTHERWISE SPECIFIED	
ANGULAR DIM. ±	DRILL, PUNCH, COMMERCIAL STOCK SIZES AND MANUFACTURERS TOLERANCES ARE NOT INCLUDED.	

CH 10131

ISSUE	ITEM	CHANGED FROM	DATE	CN. NO.	DRAFTS	CHECKER	ENG. APP.	REQ.	ITEM	PART NO.	DESCRIPTION	SYMBOL
<p>TTRT-3B AX 10020</p> <p>FNL. ASSY A10441</p> <p>HOUSING ASSY A10457</p> <p>WRAPAROUND ASSY A10438</p> <p>OSC. OVEN ASSY A10010</p> <p>CBL ASSY SHLD CA808-2</p> <p>PC BD ASSY A10436</p> <p>CBL ASSY RF CA418-9</p> <p>CAP MTG BRKT ASSY A10467</p> <p>PL COV ASSY A10449</p> <p>FR PANEL ASSY A10428</p>												
<p>TTRT-3B AX 10020</p>												
<p>TMC (Canada) LIMITED OTTAWA ONTARIO</p>												
<p>CHART, UNIT BREAKDOWN</p>												
<p>TTRT-3B</p>												
<p>GAM</p>												
<p>JACOBS</p>												
<p>CH10131</p>												

CH 10132

ISSUE	CHANGED FROM	DATE	CN. NO.	DRAFTS	CHECKER	ENG. APP.	REQ.	ITEM	PART NO.	DESCRIPTION	SYMBOL
A	REDRAWN	MAY 10/66		GM	JR	<i>(Signature)</i>					

<table border="1" style="width:100%; border-collapse: collapse;"> <tr><td style="text-align: center;">TTRT-4B</td></tr> <tr><td style="text-align: center;">AX10021</td></tr> </table>	TTRT-4B	AX10021	<table border="1" style="width:100%; border-collapse: collapse;"> <tr><td style="text-align: center;">FNL. ASSY.</td></tr> <tr><td style="text-align: center;">A10442</td></tr> </table>	FNL. ASSY.	A10442	<table border="1" style="width:100%; border-collapse: collapse;"> <tr><td style="text-align: center;">PL COV. ASSY.</td></tr> <tr><td style="text-align: center;">A10449</td></tr> </table>	PL COV. ASSY.	A10449			
TTRT-4B											
AX10021											
FNL. ASSY.											
A10442											
PL COV. ASSY.											
A10449											
<table border="1" style="width:100%; border-collapse: collapse;"> <tr><td style="text-align: center;">PC BD ASSY.</td></tr> <tr><td style="text-align: center;">A10437</td></tr> </table>	PC BD ASSY.	A10437	<table border="1" style="width:100%; border-collapse: collapse;"> <tr><td style="text-align: center;">OSC. OVEN ASSY.</td></tr> <tr><td style="text-align: center;">A10010</td></tr> </table>	OSC. OVEN ASSY.	A10010	<table border="1" style="width:100%; border-collapse: collapse;"> <tr><td style="text-align: center;">HOUSING ASSY.</td></tr> <tr><td style="text-align: center;">A10457</td></tr> </table>	HOUSING ASSY.	A10457	<table border="1" style="width:100%; border-collapse: collapse;"> <tr><td style="text-align: center;">FR. PNL. ASSY.</td></tr> <tr><td style="text-align: center;">A10428</td></tr> </table>	FR. PNL. ASSY.	A10428
PC BD ASSY.											
A10437											
OSC. OVEN ASSY.											
A10010											
HOUSING ASSY.											
A10457											
FR. PNL. ASSY.											
A10428											
<table border="1" style="width:100%; border-collapse: collapse;"> <tr><td style="text-align: center;">CAP. MTG. BRKT ASSY.</td></tr> <tr><td style="text-align: center;">A10468</td></tr> </table>	CAP. MTG. BRKT ASSY.	A10468	<table border="1" style="width:100%; border-collapse: collapse;"> <tr><td style="text-align: center;">CBL. ASSY. RF</td></tr> <tr><td style="text-align: center;">CA 418-9</td></tr> </table>	CBL. ASSY. RF	CA 418-9	<table border="1" style="width:100%; border-collapse: collapse;"> <tr><td style="text-align: center;">CBL. ASSY. SHLD</td></tr> <tr><td style="text-align: center;">CA 808-2</td></tr> </table>	CBL. ASSY. SHLD	CA 808-2	<table border="1" style="width:100%; border-collapse: collapse;"> <tr><td style="text-align: center;">WRAPAROUND ASSY.</td></tr> <tr><td style="text-align: center;">A10438</td></tr> </table>	WRAPAROUND ASSY.	A10438
CAP. MTG. BRKT ASSY.											
A10468											
CBL. ASSY. RF											
CA 418-9											
CBL. ASSY. SHLD											
CA 808-2											
WRAPAROUND ASSY.											
A10438											

MODEL	PROJECT NO.	ASS'Y. NO.	DATE	STOCK SIZE
TTR-10	009/66		APRIL 12/66	

<p>MAXIMUM ALLOWABLE TOLERANCES HAVE BEEN DETERMINED AND DEVIATIONS WILL BE CAUSE FOR REJECTION. REMOVE ALL BURRS AND SHARP EDGES</p>	<p>IF IT IS FOUND DESIRABLE TO CHANGE ANY TOLERANCE OR OTHER DETAIL SPECIFIED ON THIS DRAWING NOTIFY THE PURCHASER PROMPTLY.</p>
---	--

<p>TOLERANCES</p> <p>DEC. DIM. ±</p> <p>FRAC. DIM. ±</p> <p>ANGULAR DIM. ±</p>	<p>SCALE</p> <p>DIMENSIONS IN INCHES UNLESS OTHERWISE SPECIFIED</p> <p>DRILL, PUNCH, COMMERCIAL STOCK SIZES AND MANUFACTURERS TOLERANCES ARE NOT INCLUDED.</p>
--	--

<p>MATERIAL</p> <p>TYPE & TEMPER</p> <p>HEAT TREAT. SPEC.</p> <p>FINISH & SPEC. NO.</p>	<p>WEIGHT PER PC.</p> <p>CHECKED</p> <p>MECH. DES. APP.</p> <p>FINAL APPROVAL</p>
---	---

<p>TMC (Canada) LIMITED OTTAWA</p>	<p>CHART, UNIT BREAKDOWN, TTRT-4B</p>
<p>GAM</p> <p><i>(Signature)</i></p> <p>JACOBS</p>	<p>CHI0132</p> <p>A</p>

CH 10136

ISSUE	CHANGED FROM	DATE	CN. NO.	DRAFTS	CHECKER	ENG. APP.	REQ.	ITEM	PART NO.	DESCRIPTION	SYMBOL
A	REV PER CEMN	1-12-66	117	RD							

BROADBAND AMPLIFIER BAA-1

FINAL ASSY
A10486

LOOSE ITEMS KIT
LP10002

BROADBAND AMPL ASSY
A10487

COV. ASSY
A10488

CASE ASSY
A10489

MAIN CBL ASSY
CA10120

X FMR CHAS ASSY
A10490

TERM BD ASSY
A10193

AMPL SUB ASSY
A10491

CABLE ASSY
CA10455

CABLE ASSY
CA409-203-300

CABLE ASSY
CA10455

BAA-1

MODE - PROJECT NO. ASSY. NO. DATE

2 JUNE 66

USED ON

TMC (Canada) LIMITED
OTTAWA ONTARIO

CHART UNIT BREAKDOWN

BAA-1

RD

DRAWN *JG*

ELEC. DES. APP. MECH. DES. APP.

CHECKED *JG* FINAL APPROVAL

VACOBS

CH10136 A

IF IT IS FOUND DESIRABLE TO CHANGE ANY TOLERANCE OR OTHER DETAIL SPECIFIED ON THIS DRAWING NOTIFY THE PURCHASER PROMPTLY.

SCALE DIMENSIONS IN INCHES UNLESS OTHERWISE SPECIFIED

DRILL, PUNCH, COMMERCIAL STOCK SIZES AND MANUFACTURERS TOLERANCES ARE NOT INCLUDED.

TOLERANCES

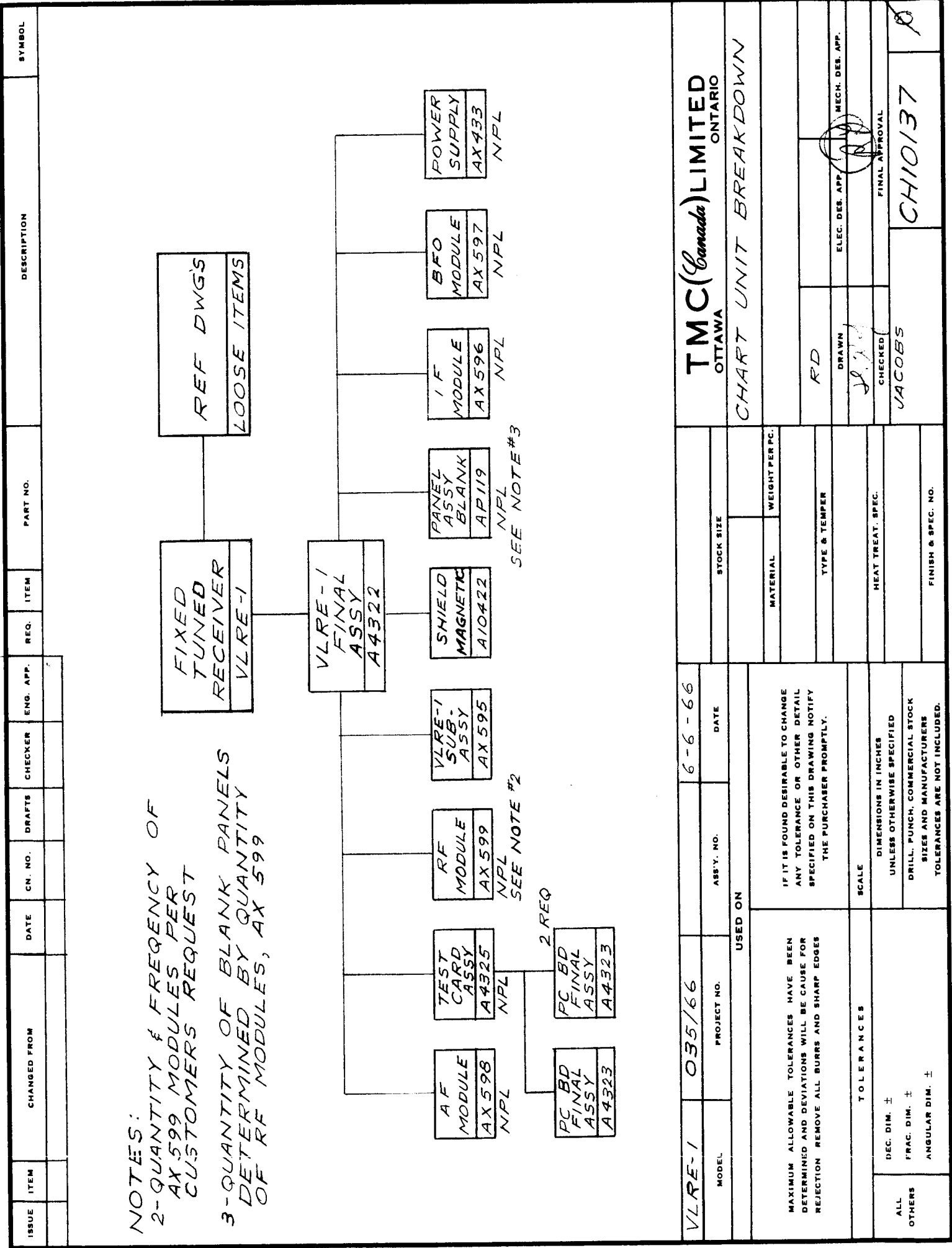
DEC. DIM. ±

FRAC. DIM. ±

ANGULAR DIM. ±

MAXIMUM ALLOWABLE TOLERANCES HAVE BEEN DETERMINED AND DEVIATIONS WILL BE CAUSE FOR REJECTION REMOVE ALL BURRS AND SHARP EDGES

CH 10/37



NOTES:
 2- QUANTITY & FREQUENCY OF AX 599 MODULES PER CUSTOMERS REQUEST
 3- QUANTITY OF BLANK PANELS DETERMINED BY QUANTITY OF RF MODULES, AX 599

SEE NOTE #3

SEE NOTE #2

2 REQ

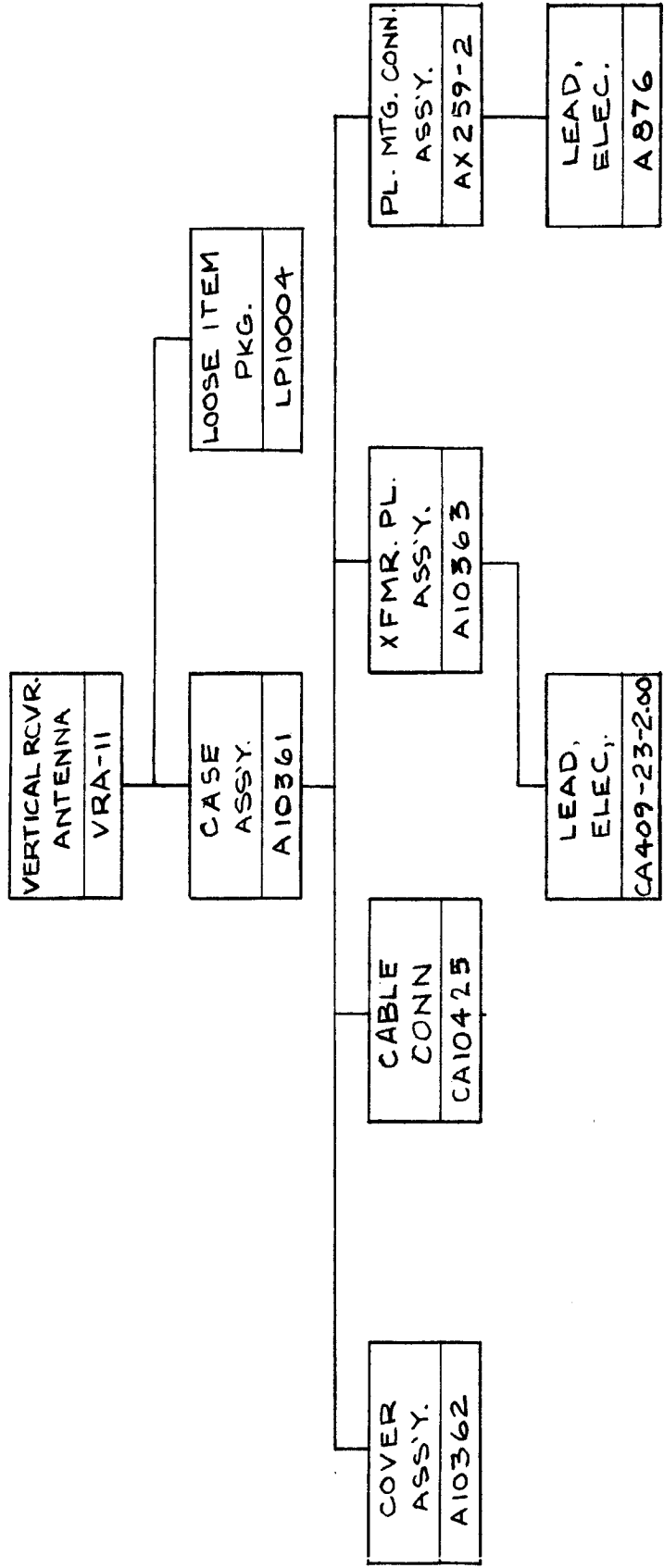
TMC (Canada) LIMITED
 OTTAWA ONTARIO

CHART UNIT BREAKDOWN

MODEL	VLRE-1	PROJECT NO.	035/66	DATE	6-6-66
ISSUE		ASSY. NO.			
USED ON					
MAXIMUM ALLOWABLE TOLERANCES HAVE BEEN DETERMINED AND DEVIATIONS WILL BE CAUSE FOR REJECTION REMOVE ALL BURRS AND SHARP EDGES			IF IT IS FOUND DESIRABLE TO CHANGE ANY TOLERANCE OR OTHER DETAIL SPECIFIED ON THIS DRAWING NOTIFY THE PURCHASER PROMPTLY.		
TOLERANCES			SCALE		
DEC. DIM. ±	DIMENSIONS IN INCHES				
FRAC. DIM. ±	UNLESS OTHERWISE SPECIFIED				
ANGULAR DIM. ±	DRILL, PUNCH, COMMERCIAL STOCK SIZES AND MANUFACTURERS TOLERANCES ARE NOT INCLUDED.				
STOCK SIZE					
MATERIAL	WEIGHT PER PC.				
TYPE & TEMPER			HEAT TREAT. SPEC.		
ELEC. DES. APP.			MECH. DES. APP.		
DRAWN			CHECKED		
RD			JACOBS		
FINAL APPROVAL			CH10137		

CH 10141

ISSUE	ITEM	CHANGED FROM	DATE	CN. NO.	DRAFTS	CHECKER	ENG. APP.	REQ.	ITEM	PART NO.	DESCRIPTION	SYMBOL
Ø		RELEASED TO PROD	OCT 11/66		RPL							
A		REV PER CEMN	11-11-66	112	RD							



VRA-11		PROJECT NO.		OCT-11/66		DATE	
MODEL		ABSY. NO.		STOCK SIZE		TMC (Canada) LIMITED OTTAWA ONTARIO	
MAXIMUM ALLOWABLE TOLERANCES HAVE BEEN DETERMINED AND DEVIATIONS WILL BE CAUSE FOR REJECTION. REMOVE ALL BURRS AND SHARP EDGES				CHART, UNIT BREAKDOWN			
TOLERANCES				RPL			
DEC. DIM. ±				DRAWN			
FRAC. DIM. ±				ELEC. DES. APP. MECH. DES. APP.			
ANGULAR DIM. ±				CHECKED			
IF IT IS FOUND DESIRABLE TO CHANGE ANY TOLERANCE OR OTHER DETAIL SPECIFIED ON THIS DRAWING NOTIFY THE PURCHASER PROMPTLY.				JACOBS			
SCALE				FINAL APPROVAL			
DIMENSIONS IN INCHES UNLESS OTHERWISE SPECIFIED				CH10141			
DRILL, PUNCH, COMMERCIAL STOCK SIZES AND MANUFACTURERS TOLERANCES ARE NOT INCLUDED.				A			

CH 10142

ISSUE	ITEM	CHANGED FROM	DATE	CN. NO.	DRAFTS	CHECKER	ENG. APP.	REQ.	ITEM	PART NO.	DESCRIPTION	SYMBOL
Ø		REL. TO PROD.	11-10-66		RD							
A		REV PER CEMN	11-11-66	110	RD							

VERTICAL RCVR.
ANTENNA
V RA-12

LOOSE ITEM
PKG.
LP10004

PL. MTG. CONN
ASS'Y.
AX 259-2

LEAD,
ELEC.
AB76

COVER
ASS'Y.
A10532

CABLE
CONN
CA10425

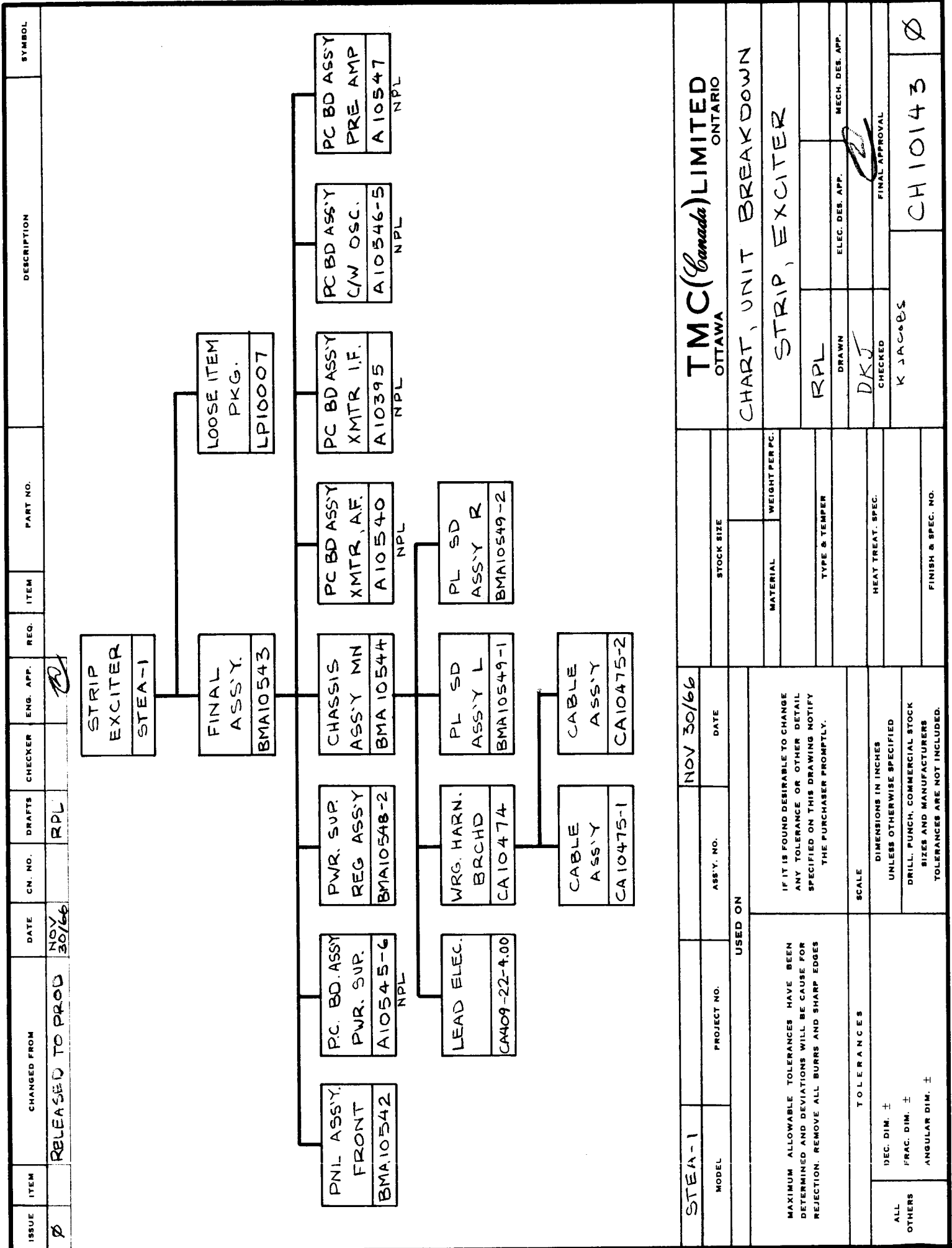
XFMR. PL.
ASS'Y.
A10533

LEAD,
ELEC.
CA409-23-2.00

FINAL
ASS'Y.
A10531

V RA-12		OCT 11/66	
MODEL	PROJECT NO.	ASSY. NO.	DATE
USED ON			
MAXIMUM ALLOWABLE TOLERANCES HAVE BEEN DETERMINED AND DEVIATIONS WILL BE CAUSE FOR REJECTION. REMOVE ALL BURRS AND SHARP EDGES		IF IT IS FOUND DESIRABLE TO CHANGE ANY TOLERANCE OR OTHER DETAIL SPECIFIED ON THIS DRAWING NOTIFY THE PURCHASER PROMPTLY.	
TOLERANCES			
DEC. DIM. ±		SCALE	
FRAC. DIM. ±		DIMENSIONS IN INCHES	
ANGULAR DIM. ±		UNLESS OTHERWISE SPECIFIED	
ALL OTHERS		DRILL. PUNCH. COMMERCIAL STOCK SIZES AND MANUFACTURERS TOLERANCES ARE NOT INCLUDED.	
TMC (Canada) LIMITED OTTAWA		JACOBS	
CHART, UNIT BREAKDOWN		FINAL APPROVAL	
RPL		CHKD	
DRAWN		ELEC. DES. APP.	
MECH. DES. APP.		MECH. DES. APP.	
A		CH10142	

CH 10143



ISSUE	ITEM	CHANGED FROM	DATE	CN. NO.	DRAFTS	CHECKER	ENG. APP.	REQ.	ITEM	PART NO.	DESCRIPTION	SYMBOL
Ø		RELEASED TO PROD	NOV 30/66		RPL							
<p>STRIP EXCITER STEA-1</p> <p>FINAL ASSY. BMA10543</p> <p>LOOSE ITEM PKG. LP10007</p> <p>PC. BD. ASSY. PWR. SUP. A10545-6 NPL</p> <p>PC. BD ASSY C/W OSC. A10546-5 NPL</p> <p>PC. BD ASSY PRE AMP A10547 NPL</p> <p>PC. BD ASSY XMTR I.F. A10395 NPL</p> <p>PC. BD ASSY XMTR. A.F. A10540 NPL</p> <p>CHASSIS ASSY MN BMA10544</p> <p>WRG. HARN. BRCHD CA10474</p> <p>PL SD ASSY L BMA10549-1</p> <p>PL SD ASSY R BMA10549-2</p> <p>LEAD ELEC. CA409-22-4.00</p> <p>CABLE ASSY CA10475-1</p> <p>CABLE ASSY CA10475-2</p>												
STE A-1			NOV 30/66			DATE			TMC (Canada) LIMITED OTTAWA ONTARIO			
MODEL			PROJECT NO.			ASSY. NO.			STOCK SIZE			
<p>USED ON</p> <p>CHART, UNIT BREAKDOWN</p> <p>STRIP, EXCITER</p>												
<p>IF IT IS FOUND DESIRABLE TO CHANGE ANY TOLERANCE OR OTHER DETAIL SPECIFIED ON THIS DRAWING NOTIFY THE PURCHASER PROMPTLY.</p>												
<p>MAXIMUM ALLOWABLE TOLERANCES HAVE BEEN DETERMINED AND DEVIATIONS WILL BE CAUSE FOR REJECTION. REMOVE ALL BURRS AND SHARP EDGES</p>												
<p>TOLERANCES</p> <p>DEC. DIM. ±</p> <p>FRAC. DIM. ±</p> <p>ANGULAR DIM. ±</p>												
<p>SCALE</p> <p>DIMENSIONS IN INCHES UNLESS OTHERWISE SPECIFIED</p> <p>DRILL, PUNCH, COMMERCIAL STOCK SIZES AND MANUFACTURERS TOLERANCES ARE NOT INCLUDED.</p>												
<p>MATERIAL</p> <p>WEIGHT PER PC.</p> <p>TYPE & TEMPER</p> <p>HEAT TREAT. SPEC.</p> <p>FINISH & SPEC. NO.</p>												
<p>RPL</p> <p>DRAWN</p> <p>CHECKED</p> <p>K JACOBS</p> <p>FINAL APPROVAL</p> <p>MECH. DES. APP.</p> <p>ELEC. DES. APP.</p>												
<p>Ø</p> <p>CH 10143</p>												

CHART UNIT BREAKDOWN

CH 10151

REV

Ø A

COMPILED

Ø B U

CHECKED

APPD

SHEET

1

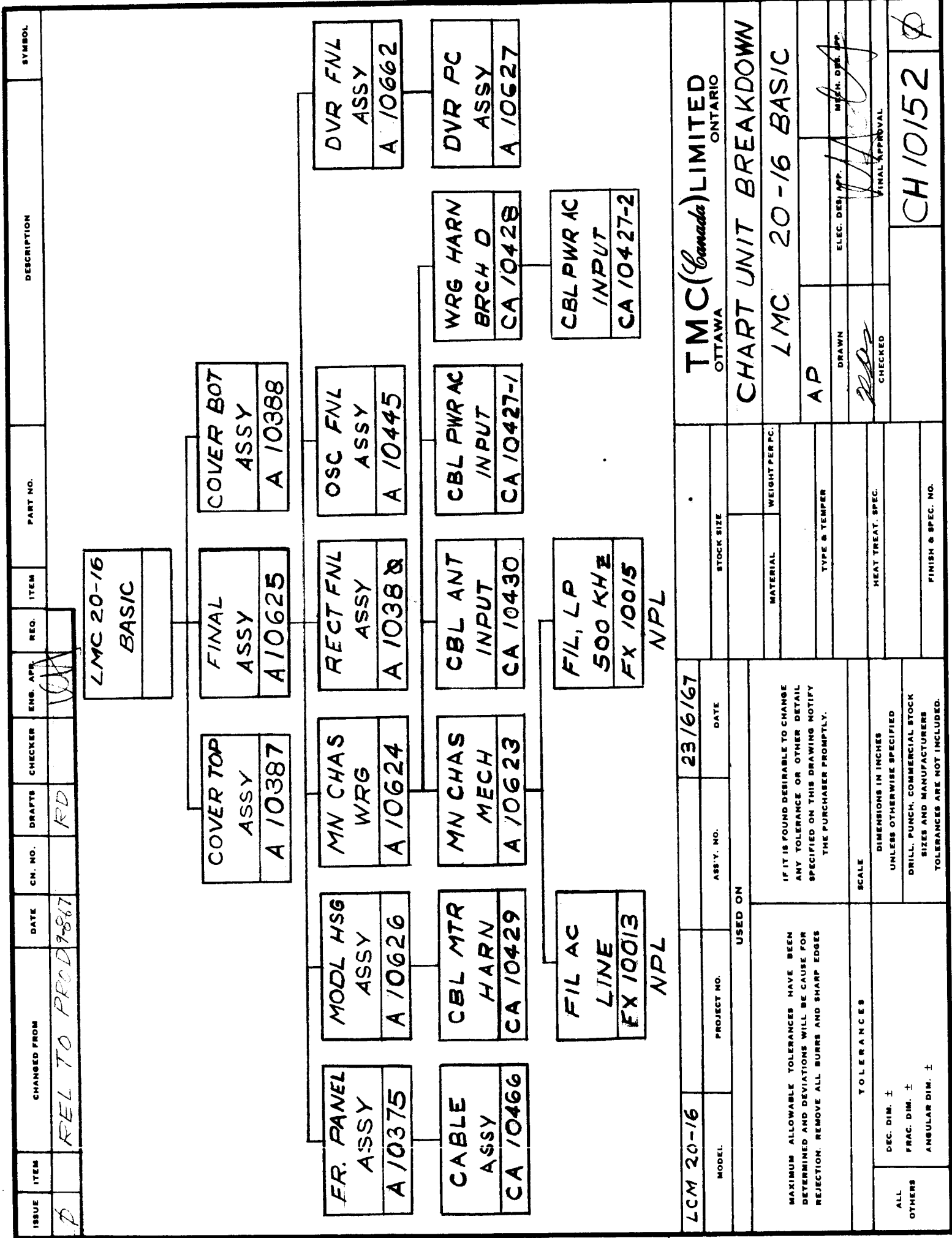
OF

2

TITLE

AX 10033 CHAS ASSY, MN

LIST TYPE	ASSEMBLY LEVEL						TITLE	QTY	
	0	1	2	3	4	5			6
M/L	AX10033							CHAS ASSY, MN	1
		BMA10607						CHAS ASSY, ENL	1
			BMA10593					XMTR, AF/IF ASSY	1
NPL				A10540-5				XMTR, AF, PC BD	1
NPL				A10603-5				XMTR IF, PC BD	1
			BMA10594					RCVR, AF/IF ASSY	1
NPL				A10541-5				RCVR AF, PC BD	1
NPL				A10556-5				RCVR IF, PC BD	1
			BMA10583					CHAS ASSY, WRG	1
NPL				A10577				PWR AMP, ASSY	1
				BMA10584				CHAS ASSY, MECH	1
					BMA10588			PL SD, R	1
					BMA10587			PNL FR, WRG	1
						CA10481		CBL ASSY, XMTR	1
						CA10482		CBL ASSY, RCVR	1
						BMA10609		PNL, FR, MECH	1
							AS10002	SW, WAFER ASSY	1
								PL, SD, L	1
					BMA10589			MODL HSG, L	1
					BMA10610			CBL, RCVR, CH	1
						CA10480		CHAS, REAR	1
					BMA10586			CBL, ASSY	1
						CA10487		MODL, HSG, R	1
					BMA10585			CBL, XMTR, CH	1
						CA10479		SUB CHAS ASSY	1
					BMA10590			ROT SW ASSY, RCVR	1
					AS10003			ROT SW ASSY, XMTR	1
					AS10004			ROT SW ASSY, XMTR	1
					CA10483			CBL, SUB CHAS	1



ISSUE	ITEM	CHANGED FROM	DATE	CN. NO.	DRAFTS	CHECKER	ENG. APP.	REQ.	ITEM	PART NO.	DESCRIPTION	SYMBOL
1		REL TO PROC 7-8-67			RD							

LMC 20-16	
BASIC	

FR. PANEL ASSY A 10375		MODL HSG ASSY A 10626		MN CHAS WRG A 10624		RECT FNL ASSY A 10388		OSC FNL ASSY A 10445		COVER BOT ASSY A 10388		DVR FNL ASSY A 10662	
CABLE ASSY CA 10466		CBL MTR HARN CA 10429		MN CHAS MECH A 10623		CBL ANT INPUT CA 10430		CBL PWR AC INPUT CA 10427-1		WRG HARN BRCH D CA 10428		DVR PC ASSY A 10627	
FIL AC LINE FX 10013 NPL		FIL, LP 500 KHZ FX 10015 NPL		CBL PWR AC INPUT CA 10427-2		CBL PWR AC INPUT CA 10427-1		CBL PWR AC INPUT CA 10427-1		CBL PWR AC INPUT CA 10427-2		CBL PWR AC INPUT CA 10427-2	
COVER TOP ASSY A 10387		FINAL ASSY A 10625		COVER BOT ASSY A 10388		COVER BOT ASSY A 10388		COVER BOT ASSY A 10388		COVER BOT ASSY A 10388		COVER BOT ASSY A 10388	

LCM 20-16	PROJECT NO.	ASSY. NO.	DATE	STOCK SIZE	TMC (Canada) LIMITED OTTAWA ONTARIO	
MODEL	USED ON	23/6/67			CHART UNIT BREAKDOWN	
MAXIMUM ALLOWABLE TOLERANCES HAVE BEEN DETERMINED AND DEVIATIONS WILL BE CAUSE FOR REJECTION. REMOVE ALL BURRS AND SHARP EDGES		IF IT IS FOUND DESIRABLE TO CHANGE ANY TOLERANCE OR OTHER DETAIL SPECIFIED ON THIS DRAWING NOTIFY THE PURCHASER PROMPTLY.		LMC 20-16 BASIC		
TOLERANCES		SCALE		AP		
DEC. DIM. ±	DIMENSIONS IN INCHES	TYPE & TEMPER		DRAWN		ELEC. DES. APP.
FRAC. DIM. ±	UNLESS OTHERWISE SPECIFIED	HEAT TREAT. SPEC.		CHECKED		Mech. Des. App.
ANGULAR DIM. ±	DRILL, PUNCH, COMMERCIAL STOCK SIZES AND MANUFACTURERS TOLERANCES ARE NOT INCLUDED.	FINISH & SPEC. NO.		FINAL APPROVAL		
ALL OTHERS				CH 10152		

CH 10156

ISSUE	ITEM	CHANGED FROM	DATE	CN. NO.	DRAFTS	CHECKER	EMB. DATE	REQ.	ITEM	PART NO.	DESCRIPTION	SYMBOL
Ø		RELEASE TO PROD	2/10/67		AP	W	1/11/67					
<p>POWER SUPPLY 115/208/230 VAC AX 10037</p>												
<p>LOOSE ITEM PACKAGE LP10012</p>												
<p>MAIN CHASSIS ASSY BMA10569</p>												
<p>REGULATOR ASSY BMA10570</p>												
<p>PC BD ASSY PWR SUP A-10545-7 NPL</p>												
<p>WIRING HARNESS CA 789</p>												
<p>PC BD, HV RECT A-3647</p>												
<p>PLATE ASSEMBLY BMA10592</p>												
<p>CABLE ASSY, RF CA 480-3-5</p>												
<p>CABLE ASSY, RF CA 480-3-14</p>												
<p>PANEL ASSY REAR A 2717</p>												
<p>CABLE ASSY, RF CA 480-96-5</p>												
<p>TOLERANCES</p> <p>MAXIMUM ALLOWABLE TOLERANCES HAVE BEEN DETERMINED AND DEVIATIONS WILL BE CAUSE FOR REJECTION. REMOVE ALL BURRS AND SHARP EDGES</p> <p>DEC. DIM. ± FRAC. DIM. ± ANGULAR DIM. ±</p> <p>SCALE: DIMENSIONS IN INCHES UNLESS OTHERWISE SPECIFIED DRILL, PUNCH, COMMERCIAL STOCK SIZES AND MANUFACTURERS TOLERANCES ARE NOT INCLUDED.</p>												
<p>TOLERANCES</p> <p>IF IT IS FOUND DESIRABLE TO CHANGE ANY TOLERANCE OR OTHER DETAIL SPECIFIED ON THIS DRAWING NOTIFY THE PURCHASER PROMPTLY.</p>												
<p>USED ON</p> <p>MODEL: TTR-20 PROJECT NO.: 053/67 DATE: JUNE 23/67</p>												
<p>TMC (Canada) LIMITED OTTAWA ONTARIO</p> <p>CHART UNIT BREAKDOWN AX 10037</p>												
<p>AP</p> <p>DRAWN: [Signature]</p> <p>CHECKED: [Signature]</p> <p>ELEC. DES. APP. [Signature]</p> <p>MECH. DES. APP. [Signature]</p> <p>FINAL APPROVAL</p>												
<p>CH 10156 Ø</p>												

REV: X X1 X2

COMPILED: S WATSON

CHECKED:

APPD:

SHEET 1 OF 1

TITLE: CHART, UNIT BREAKDOWN -AMC 21

AMC 21		ANTENNA MULTICOUPLER	QTY
.	BMA10698	COVER ASSY	2
.	NPL AX10041	OUTPUT MODULE	SEE NOTE 1
.	NPL AX10047	CHAS ASSY, MAIN	1
.	NPL FX10020	FILTER ASSY B/C BANDSTOP	SEE NOTE 2
.	NPL FX10021	FILTER ASSY HIGHPASS	SEE NOTE 2
.	NPL FX10022	FILTER ASSY LOW PASS	SEE NOTE 2
.	LP10015	LOOSE ITEMS PACK.	1
..	CA10507	CABLE ASSY PWR	1

NOTES

1. FOR AMC 21-4 USE QTY. 2 of AX10041
" " -8 " " 4 " "
" " -16 " " 8 " "
2. FOR B/C BAND REJECT USE FX10020
" 0-1-2 MHZ " FX10021
" 2-32 MHZ " FX10022

REV: X X1 X2

CH10163

COMPILED:

CHECKED:

APPD:

TITLE: CHART, UNIT BREAKDOWN AX10047

SHEET 1 OF 1

AX10047				QTY
.	A10691		CHASSIS ASSY MAIN	1
..		CA10508-1	BRT ASSY, SWITCH	1
..		CA10508-2	CABLE ASSY, RF	1
.	A10692		CABLE ASSY, RF	1
..		A10697	PANEL ASSY, FRONT	1
...	NPL		POWER SUPP, ASSY	1
.	A10693	A10683-5	PRINTED CIR ASSY PWR SUPP	1
..		A10694	PANEL ASSY, REAR	1
.	NPL	A10687-5	HOUSING ASSY MODULE	1
.		A10689	PRINT. CIR ASSY PRE-AMP	1
.		A10690	PLATE ASSY RH	1
.		CL10041-2	PLATE ASSY LH	1
.		FX10024	COIL RF	1
.			FILTER ASSY, AC LINE	1

CHART UNIT BREAKDOWN

CH 10165

REV: 0

COMPILED: CB

CHECKED:

APPD:

SHEET 1

OF 2

TITLE:

AX 100 48 CHAS ASSY, MN

LIST TYPE	ASSEMBLY LEVEL						TITLE	QTY
	0	1	2	3	4	5		
M/L	AX10048						CHAS ASSY MAIN	1
		BMA10724					CHAS ASSY FINAL	1
		BMA10593					XMTR, AF/IF ASSY	1
NPL			A10540-5				XMTR, AF ASSY	1
NPL			A10603-5				XMTR, IF ASSY	1
		BMA10725					RCVR, AF/IF ASSY	1
NPL			BMA105415				RCVR, AF PCB	1
NPL			BMA10713-5				RCVR, IF PCB	1
		BMA10726					CHAS ASSY WRG	1
NPL			A10577				PWR AMP ASSY	1
			BMA10727				CHAS ASSY MECH	1
				BMA10734			MODL HSG, R	1
					CA10479		CBL XMTR, CH	1
				BMA10588			PL SD, R	1
				BMA10589			PL SD, L	1
				BMA10729			PNL, FR, WRG	1
					BMA10732		PNL, FR MECH	1
						AS10002	SW, WAFER ASSY	1
					CA10481		CBL ASSY XMTR	1
					CA10525		CBL ASSY RCVR	1
							MODL HSG L	1
				BMA10730			CBL RCVR CH	1
				BMA10731			CHAS REAR	1
					CA10487		CBL ASSY	1
			BMA10728				SUB CHAS ASSY	1
				AS10003			ROT SW ASSY RCVR	1
				AS10004			ROT SW ASSY XMTR	1
				CA10527			CBL SUB CHAS	1

CHART UNIT BREAKDOWN

CH 10166

REV: 0

COMPILED: CB

CHECKED:

APPD:

SHEET 1 OF 1

TITLE:

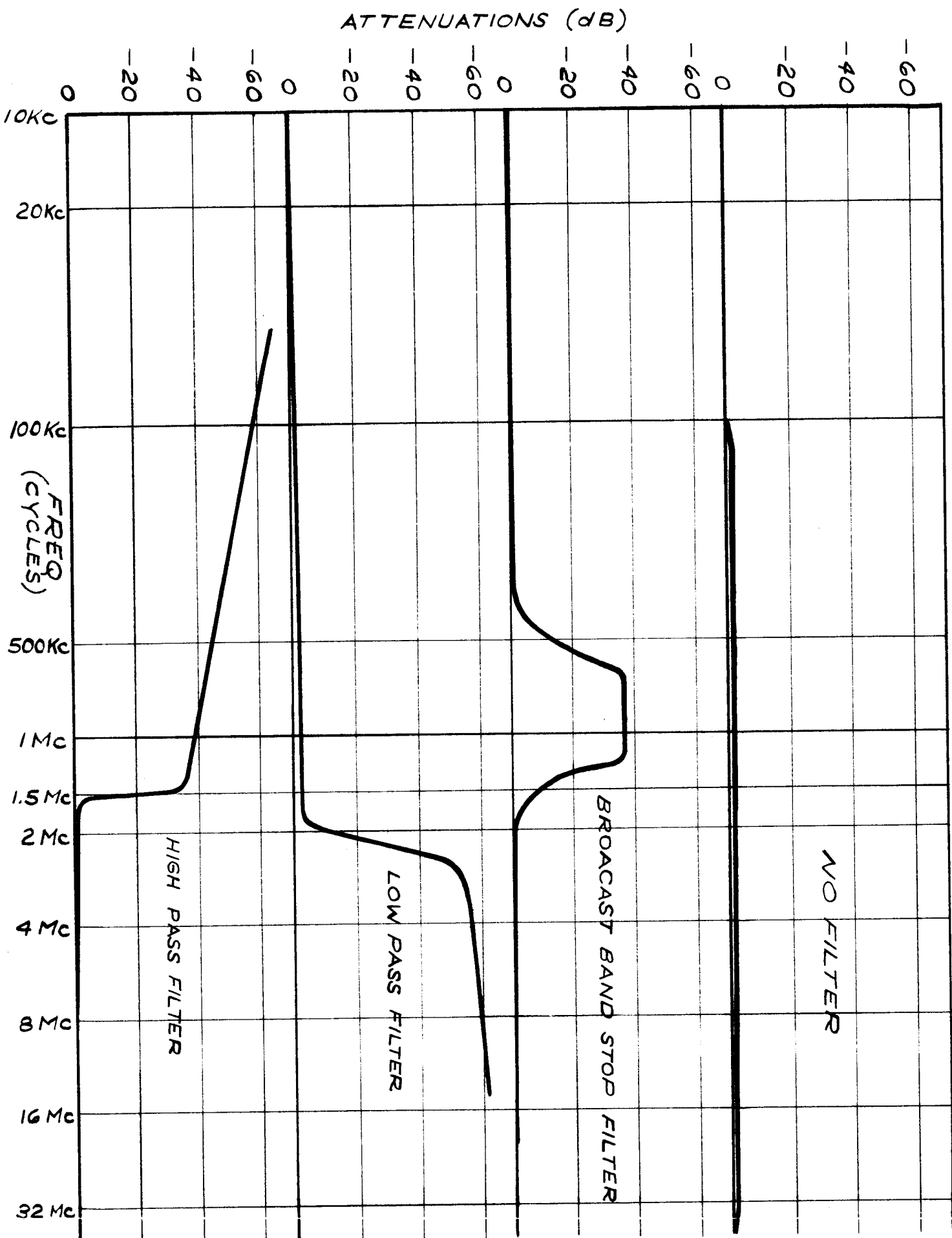
A10577 PWR AMP ASSY

LIST TYPE	ASSEMBLY LEVEL						TITLE	QTY
	0	1	2	3	4	5		
NPL	A10577						PWR AMP ASSY	1
		A10629					PA CHAS WIRG	1
			A105824				TERM BD SUPP	1
				AX391			SUPP PARAS	2
				CA10486			CBL ASSY	2
		AX163					SUPP PARAS	1
		BMA10580					PA CHAS MECH	1
NPL				A10595-5			GRID MTR PCB	1
				AS10001			ROT SW ASSY	1
				CL10034			COIL RF ASSY	1
				TF10034			XMTR, RF	1
							PL, ASSY, R	1
				BMA10609			CBL PA CHAS	1
				CA10485			COIL RF FIXED	2
				CL318			PA SHIELD-ASSY	1
		A10578					CONT BD ASSY	2
				A2778			REAR SHIELD ASSY	1
				BMA10619			OUTPUT MTR & ALDC PCB	1
NPL				A10596-5			COIL RF FIXED	1
				CL317			CBL ASSY	1
				CA10488				

99101 HD

TYPICAL FILTER CHARACTERISTICS - AMC-21

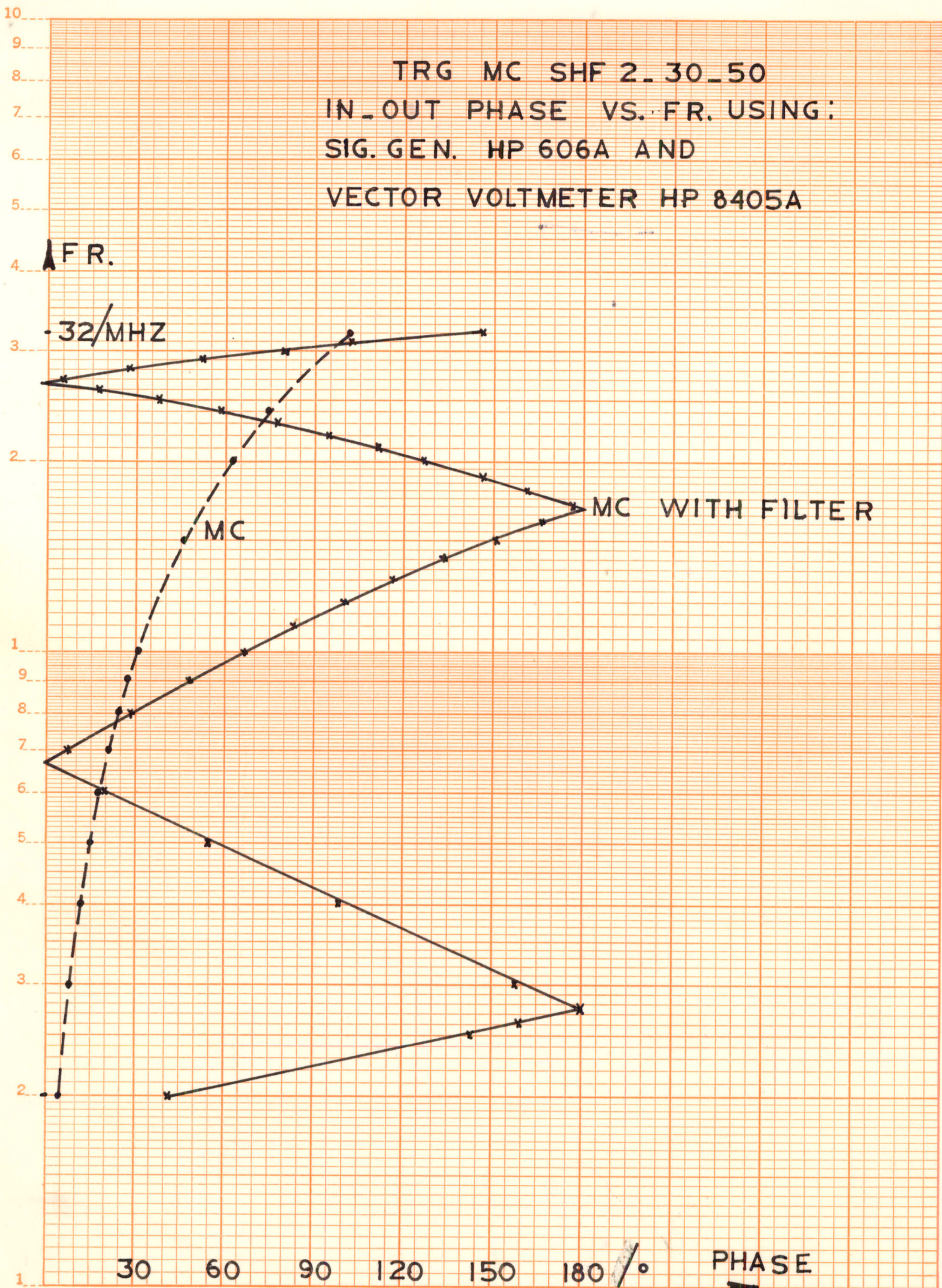
JULY 9/68



CH 10167-Ø AP

TRG MC SHF 2_30_50
 IN_OUT PHASE VS. FR. USING:
 SIG. GEN. HP 606A AND
 VECTOR VOLTMETER HP 8405A

CH 10171

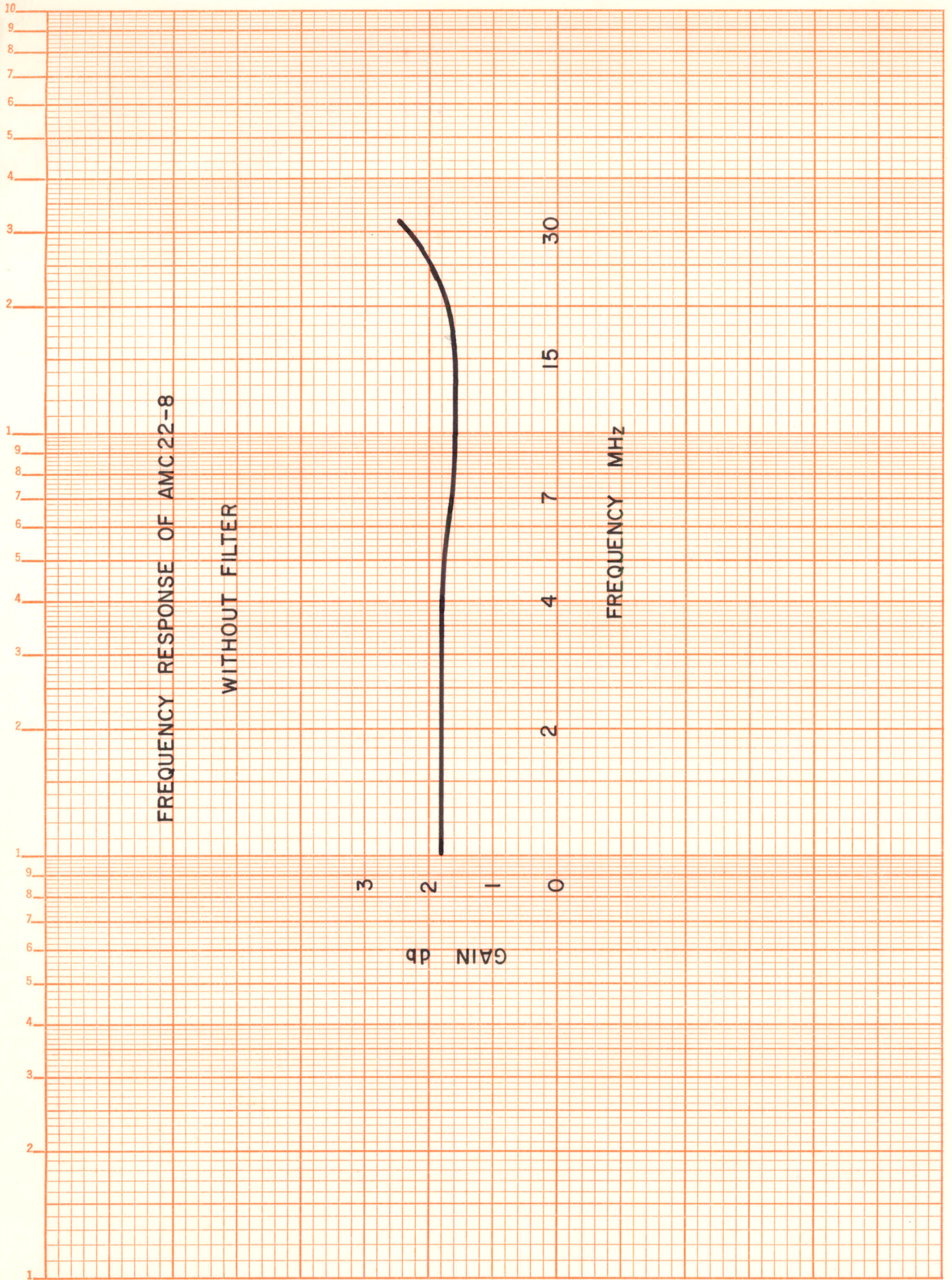


KEUFFEL & ESSER CO., N. Y. NO. 359-60
 Semi-Logarithmic, 2 Cycles X 60 divisions.
 MADE IN U. S. A.

CH 10171

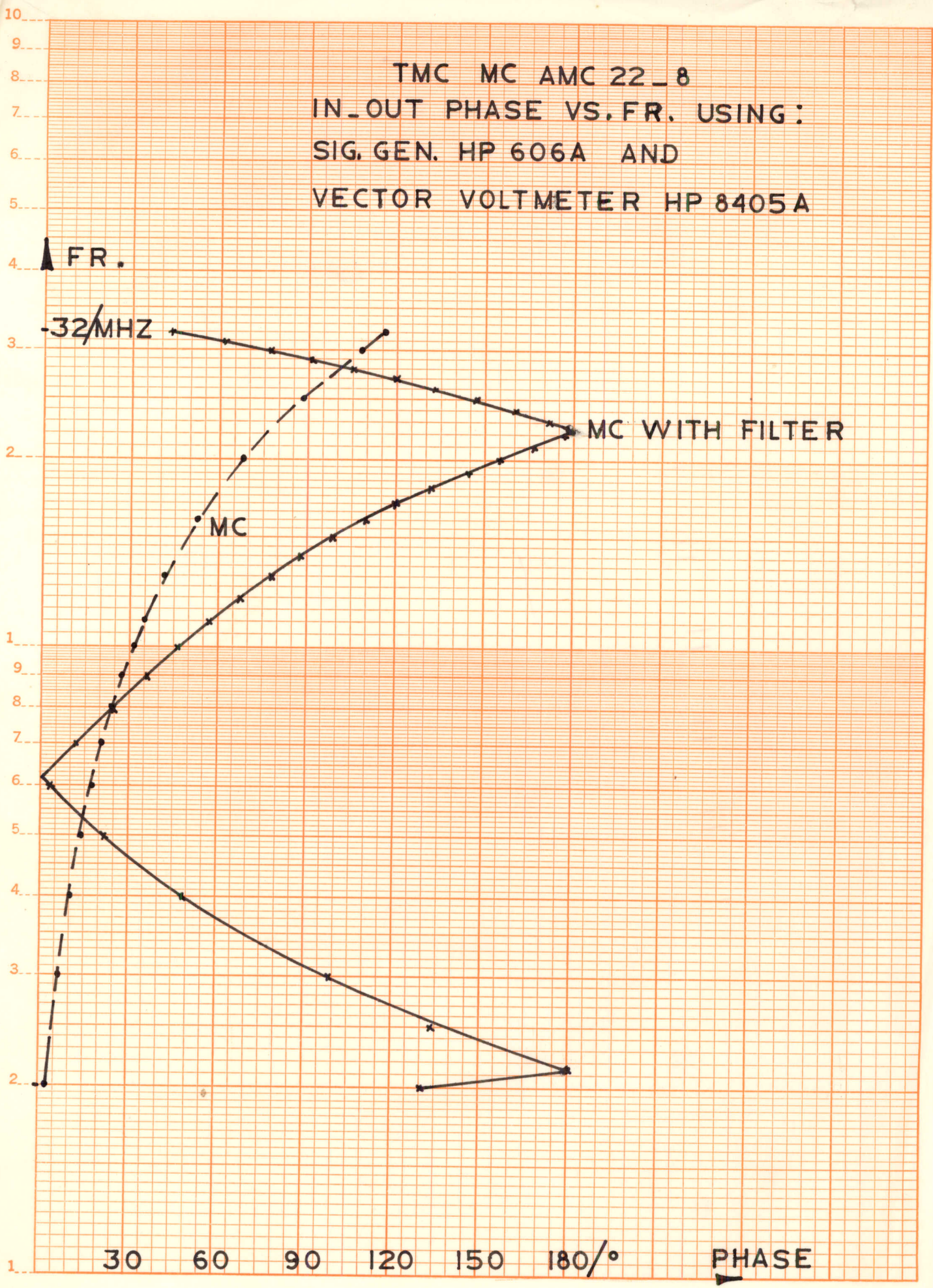
FREQUENCY RESPONSE OF AMC 22-8

WITHOUT FILTER



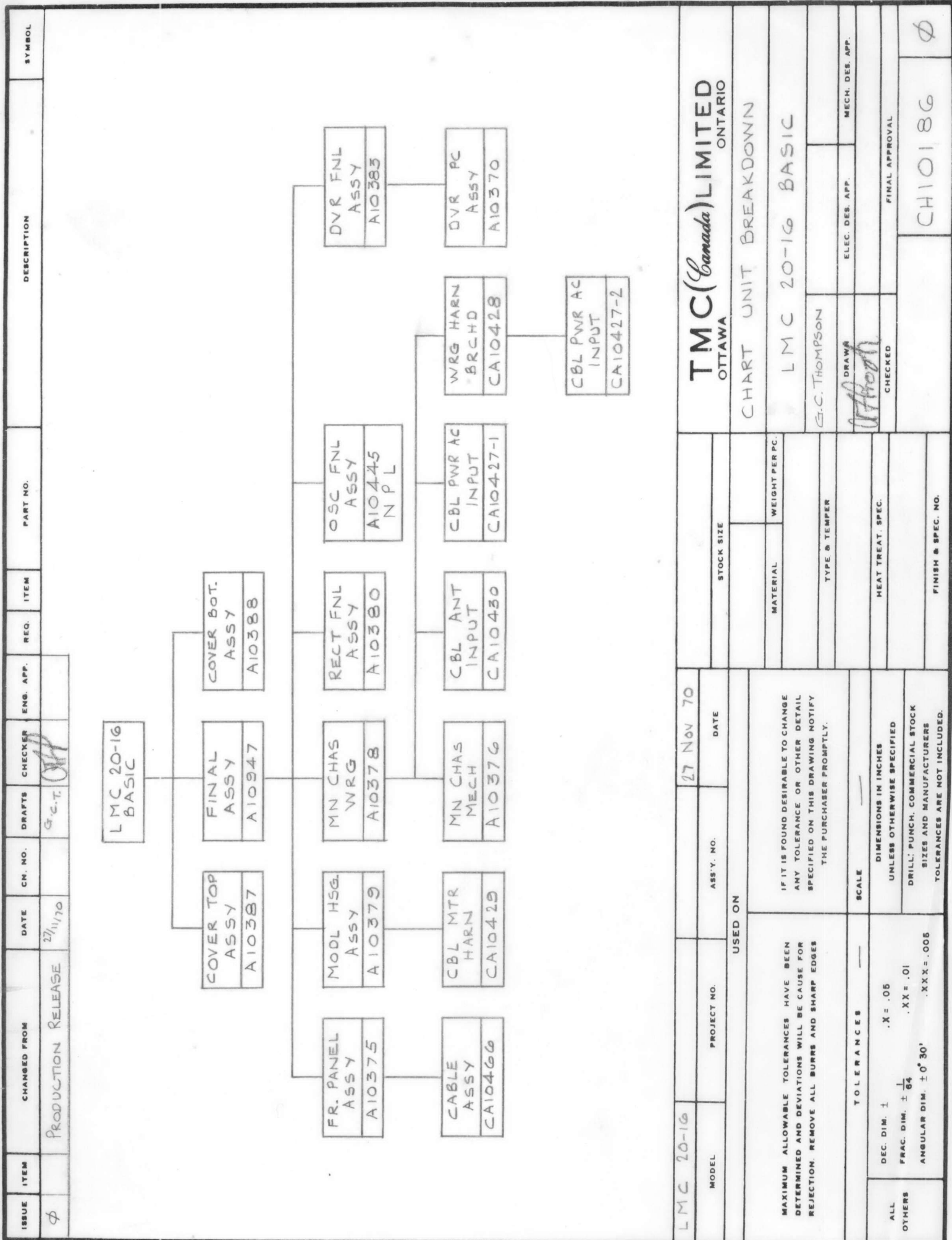
CH 10172

TMC MC AMC 22_8
 IN_OUT PHASE VS. FR. USING:
 SIG. GEN. HP 606A AND
 VECTOR VOLTMETER HP 8405A



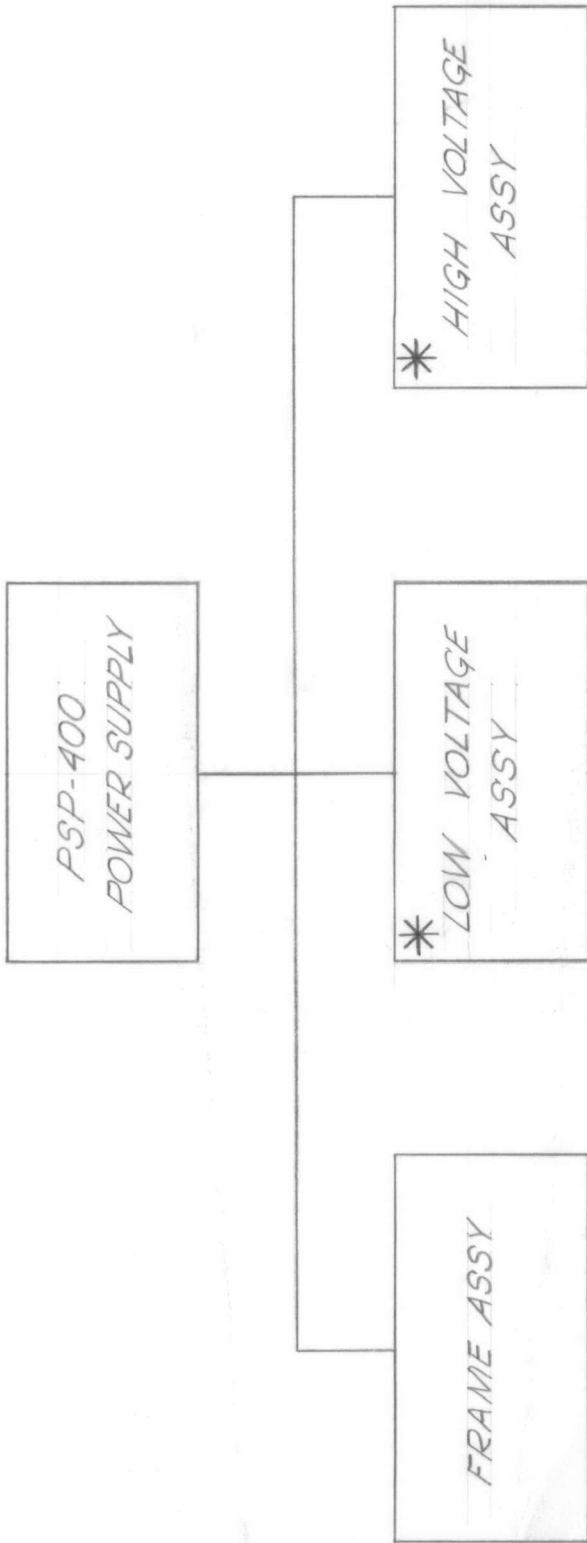
KEUFFEL & ESSER CO., N. Y. NO. 359-60
 Semi-Logarithmic, 2 Cycles X 60 divisions.
 MADE IN U.S.A.

CH10173



ISSUE	ITEM	CHANGED FROM	DATE	CH. NO.	DRAFTS	CHECKER	ENG. APP.	REQ.	ITEM	PART NO.	DESCRIPTION	SYMBOL	
φ		PRODUCTION RELEASE	27/11/70		G.C.T.	<i>[Signature]</i>							
<p style="text-align: center;">LMC 20-16 LIMITED OTTAWA ONTARIO</p> <p style="text-align: center;">CHART UNIT BREAKDOWN</p> <p style="text-align: center;">LMC 20-16 BASIC</p> <p style="text-align: center;">G.C. THOMPSON</p> <p style="text-align: center;">DRAWN <i>[Signature]</i></p> <p style="text-align: center;">CHECKED</p> <p style="text-align: center;">ELEC. DES. APP.</p> <p style="text-align: center;">MECH. DES. APP.</p> <p style="text-align: center;">FINAL APPROVAL</p> <p style="text-align: center;">φ CH10186</p>													
MODEL		PROJECT NO.		ASSY. NO.		DATE		STOCK SIZE		MATERIAL		WEIGHT PER PC.	
LMC 20-16						27 Nov 70							
MAXIMUM ALLOWABLE TOLERANCES HAVE BEEN DETERMINED AND DEVIATIONS WILL BE CAUSE FOR REJECTION. REMOVE ALL BURRS AND SHARP EDGES				IF IT IS FOUND DESIRABLE TO CHANGE ANY TOLERANCE OR OTHER DETAIL SPECIFIED ON THIS DRAWING NOTIFY THE PURCHASER PROMPTLY.				SCALE					
TOLERANCES				DIMENSIONS IN INCHES UNLESS OTHERWISE SPECIFIED				HEAT TREAT. SPEC.					
DEC. DIM. 1 .X = .05													
FRAC. DIM. ± 1/64 .XX = .01													
ANGULAR DIM. ± 0' 30' .XXX = .005													
ALL OTHERS								FINISH & SPEC. NO.					

ISSUE	ITEM	CHANGED FROM	DATE	CN. NO.	DRAFTS	CHECKER	ENG. APP.	REQ.	ITEM	PART NO.	DESCRIPTION	SYMBOL
X		ENG RELEASE	26 OCT 72		C.C.							



* FIELD REPLACABLE MODULE

PSP 400		PROJECT NO.	ASSY. NO.	DATE	TMC (Canada) LIMITED OTTAWA ONTARIO	
MODEL		USED ON			PSP 400 DRAWING CHART	
MAXIMUM ALLOWABLE TOLERANCES HAVE BEEN DETERMINED AND DEVIATIONS WILL BE CAUSE FOR REJECTION REMOVE ALL BURRS AND SHARP EDGES		IF IT IS FOUND DESIRABLE TO CHANGE ANY TOLERANCE OR OTHER DETAIL SPECIFIED ON THIS DRAWING NOTIFY THE PURCHASER PROMPTLY.			DRAWN	
TOLERANCES		SCALE			CHECKED	
DEC. DIM. ±	.X = .05	DIMENSIONS IN INCHES UNLESS OTHERWISE SPECIFIED			ELEC. DES. APP.	
FRAC. DIM. ±	1/64 .XX = .01	DRILL: PUNCH, COMMERCIAL STOCK SIZES AND MANUFACTURERS TOLERANCES ARE NOT INCLUDED.			MECH. DES. APP.	
ANGULAR DIM. ±	0° 30' .XXX = .005				FINAL APPROVAL	
ALL OTHERS					C. CHARLES	
					CH 10194 X	