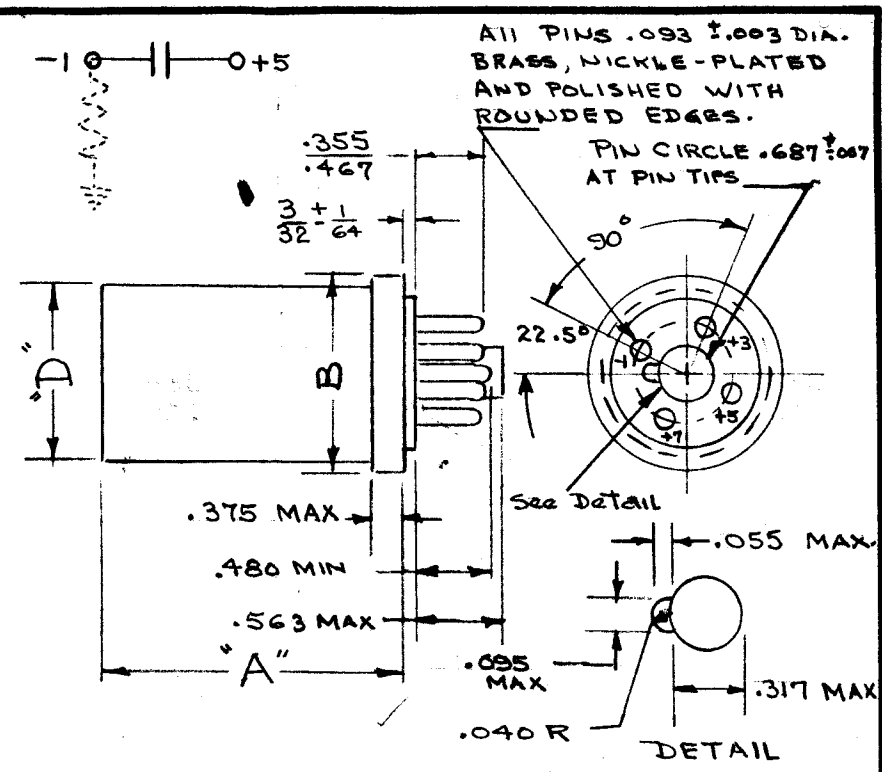


TYPE DESIGNATION	DC WORKING VOLTAGE volts	CAPACITANCE microfarads	MAX. IMPED. AT 120 CPS-AT 20°C ohms	MAX. RMS RIPPLE AT 120+10 5CPS milliampers	CASE SIZE
CE51C101E	15	100	295		T1
CE51C251E	15	250	118		T1
CE51C501E	15	500	59	500	T1
CE51C851E	15	850	35	630	T2
CE51C122E	15	1,200	25	760	T3
CE51C152E	15	1,500	26	850	T4
CE51C202E	15	2,000	15	1,000	T5
CE51C250F	25	25	590		T1
CE51C500F	25	50	295		T1
CE51C101F	25	100	148	200	T1
CE51C251F	25	250	59	350	T1
CE51C401F	25	400	37	500	T1
CE51C601F	25	600	25	650	T2
CE51C851F	25	850	18	770	T3
CE51C102F	25	1,000	15	850	T4
CE51C152F	25	1,500	10	1,000	T5
CE51C250G	50	25	596		T1
CE51C500G	50	50	295		T1
CE51C101G	50	100	148	200	T1
CE51C301G	50	300	50	400	T1
CE51C351G	50	350	42	450	T2
CE51C501G	50	500	30	620	T3
CE51C601G	50	600	25	700	T4
CE51C801G	50	800	19	900	T5
CE51C250H	100	25	354	140	T1
CE51C500H	100	50	177	190	T1
CE51C101H	100	100	88	200	T1
CE51C151H	100	150	59	250	T1
CE51C181H	100	180	50	280	T2
CE51C251H	100	250	35	350	T3
CE51C301H	100	300	30	400	T4
CE51C401H	100	400	22	500	T5
CE51C100J	150	10	885		T1
CE51C250J	150	25	354	170	T1
CE51C500J	150	50	177	200	T1
CE51C121J	150	120	74	220	T1
CE51C131J	150	130	69	230	T2
CE51C201J	150	200	44	300	T3
CE51C251J	150	250	35	350	T4
CE51C351J	150	350	26		T5
CE51C100K	200	10	885	130	T1
CE51C250K	200	25	353	170	T1

TYPE DESIGNATION	DC WORKING VOLTAGE volts	CAPACITANCE microfarads	MAX. IMPED. AT 120+10 5CPS-AT 20°C ohms	MAX. RMS RIPPLE AT 120+10 5CPS milliampers	CASE SIZE
CE51C500K	200	50	177	200	T1
CE51C101K	200	100	88	200	T1
CE51C111K	200	110	81	210	T2
CE51C161K	200	160	55	260	T3
CE51C201K	200	200	44	300	T4
CE51C251K	200	250	35	350	T5
CE51C100M	250	10	885	80	T1
CE51C250M	250	25	354	170	T1
CE51C500M	250	50	177	200	T1
CE51C750M	250	75	118	200	T1
CE51C850M	250	85	105	200	T2
CE51C121M	250	120	74	220	T3
CE51C151M	250	150	59	250	T4
CE51C161M	250	160	55	260	T5
CE51C100N	300	10	885	90	T1
CE51C250N	300	25	354	190	T1
CE51C500N	300	50	177	200	T1
CE51C650N	300	65	136	200	T1
CE51C750N	300	75	118	200	T2
CE51C101N	300	100	88	200	T3
CE51C121N	300	120	74	220	T4
CE51C151N	300	150	59	250	T5
CE51C100P	350	10	885	145	T1
CE51C250P	350	25	354	190	T1
CE51C450P	350	45	197	200	T1
CE51C500P	350	50	177	200	T2
CE51C750P	350	75	118	200	T3
CE51C101P	350	100	88	200	T4
CE51C121P	350	120	74	200	T5
CE51C100Q	400	10	1480	150	T1
CE51C250Q	400	25	890	190	T1
CE51C350Q	400	35	422	200	T1
CE51C400Q	400	40	370	200	T2
CE51C650Q	400	65	228	200	T3
CE51C750Q	400	75	197	200	T4
CE51C101Q	400	100	148	200	T5
CE51C100R	450	10	2220	150	T1
CE51C150R	450	15	1480	160	T1
CE51C250R	450	25	890	190	T1
CE51C350R	450	35	635	200	T1
CE51C400R	450	40	555	200	T2
CE51C600R	450	60	370	200	T3
CE51C700R	450	70	317	200	T4
CE51C800R	450	80	278	200	T5



CASE SIZE	DIMENSIONS		
	A ± 1/16	B ± .010 / .050	D ± 1/64
T1	2 1/2	1 1/4	1 5/32
T2	2 1/2	1 1/2	1 3/8
T3	3	1 1/2	1 3/8
T4	3 1/2	1 1/2	1 3/8
T5	4 1/4	1 1/2	1 3/8

1 For case size T1, tolerance shall be $\pm .030$ $-.050$

- All dimensions in inches.
- Tolerances are $\pm .5^\circ$ on angles.
- Number-1 terminal negative.
- Capacitor plugs into a standard, medium octal socket with a $.687 \pm .007$ diameter pin circle. The capacitor shall never have less than four pin terminals.

REF: In Accordance w/ MIL-C62B and Amend.

ISSUE	ITEM	CHANGED FROM	DATE	CH. NO.	DRAFTS	CHECKER	ENG. APP.
A	1	COMPLETELY UPDATED	3-1-63	8350			
TOLERANCES			SCALE:				
DEC. DIM. ±			MAXIMUM ALLOWABLE TOLERANCES HAVE BEEN DETERMINED AND ANY DEVIATIONS WILL BE CAUSE FOR REJECTION. REMOVE ALL BURRS AND SHARP EDGES				
FRAC. DIM. ±							
ANGULAR DIM. ±							

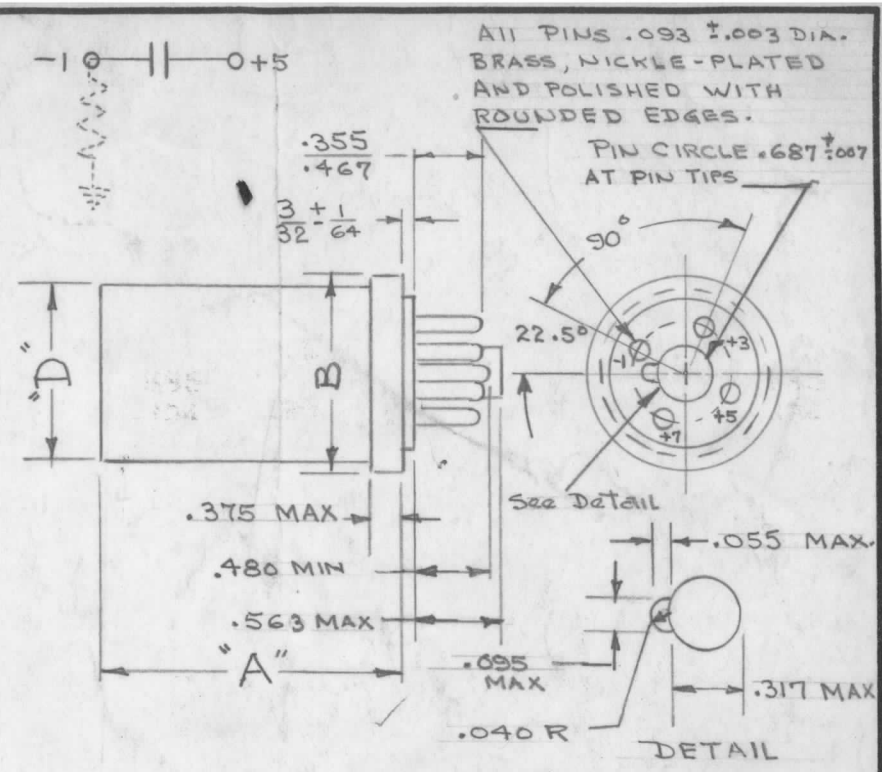
CE51 C 101 E
 Style Characteristic Capacitance Voltage
 OPER. TEMP. RANGE -40 to +85°C

REQ. PER UNIT	MODEL	PROJECT NO.	ASS'Y. NO.	DATE
---------------	-------	-------------	------------	------

PART NO.	DESCRIPTION	SYMBOL
	THE TECHNICAL MATERIEL CORP. MAMARONECK, NEW YORK	
STOCK SIZE	Capacitor; fixed Electrolytic (DC, Aluminum, Dry Electrolytic, Polarized.)	
MATERIAL		
TYPE & TEMPER	HEAT TREAT. SPEC.	DRAWN
		CHECKED
FINISH & SPEC. NO.	ELEC. DES. APP.	MECH. DES. APP.
		CE51

TYPE DESIGNATION	DC WORKING VOLTAGE volts	CAPACITANCE microfarads	MAX. IMPED. AT 120 ± 10% CPS-AT-10°C ohms	MAX. RMS RIPPLE AT 120 ± 10% CPS milliamperes	CASE SIZE
CE51C101E	15	100	296		T1
CE51C251E	15	250	118		T1
CE51C501E	15	500	59	500	T1
CE51C851E	15	850	35	630	T2
CE51C122E	15	1,200	25	760	T3
CE51C152E	15	1,500	26	850	T4
CE51C202E	15	2,000	15	1,000	T5
CE51C250F	25	1,225	590		T1
CE51C500F	25	50	295		T1
CE51C101F	25	100	148	200	T1
CE51C251F	25	250	59	350	T1
CE51C401F	25	400	37	500	T1
CE51C601F	25	600	25	650	T2
CE51C851F	25	850	18	770	T3
CE51C102F	25	1,000	15	850	T4
CE51C152F	25	1,500	10	1,000	T5
CE51C250G	50	25	596		T1
CE51C500G	50	50	295		T1
CE51C101G	50	100	148	200	T1
CE51C301G	50	300	50	400	T1
CE51C351G	50	350	42	450	T2
CE51C501G	50	500	30	620	T3
CE51C601G	50	600	25	700	T4
CE51C801G	50	800	19	900	T5
CE51C250H	100	25	354	140	T1
CE51C500H	100	50	177	190	T1
CE51C101H	100	100	88	200	T1
CE51C151H	100	150	59	250	T1
CE51C181H	100	180	50	280	T2
CE51C251H	100	250	35	350	T3
CE51C301H	100	300	30	400	T4
CE51C401H	100	400	22	500	T5
CE51C100J	150	10	885		T1
CE51C250J	150	25	354	170	T1
CE51C500J	150	50	177	200	T1
CE51C121J	150	120	74	220	T1
CE51C131J	150	130	69	230	T2
CE51C201J	150	200	44	300	T3
CE51C251J	150	250	35	350	T4
CE51C351J	150	350	26		T5
CE51C100K	200	10	885	130	T1
CE51C250K	200	25	353	170	T1

TYPE DESIGNATION	DC WORKING VOLTAGE volts	CAPACITANCE microfarads	MAX. IMPED. AT 120 ± 10% CPS-AT-10°C ohms	MAX. RMS RIPPLE AT 120 ± 10% CPS milliamperes	CASE SIZE
CE51C500K	200	50	177	200	T1
CE51C101K	200	100	88	200	T1
CE51C111K	200	110	81	210	T2
CE51C161K	200	160	55	260	T3
CE51C201K	200	200	44	300	T4
CE51C251K	200	250	35	350	T5
CE51C100M	250	10	885	80	T1
CE51C250M	250	25	354	170	T1
CE51C500M	250	50	177	200	T1
CE51C750M	250	75	118	200	T1
CE51C850M	250	85	105	200	T2
CE51C121M	250	120	74	220	T3
CE51C151M	250	150	59	250	T4
CE51C161M	250	160	55	260	T5
CE51C100N	300	10	885	90	T1
CE51C250N	300	25	354	190	T1
CE51C500N	300	50	177	200	T1
CE51C650N	300	65	136	200	T1
CE51C750N	300	75	118	200	T2
CE51C101N	300	100	88	200	T3
CE51C121N	300	120	74	220	T4
CE51C151N	300	150	59	250	T5
CE51C100P	350	10	885	145	T1
CE51C250P	350	25	354	190	T1
CE51C450P	350	45	197	200	T1
CE51C500P	350	50	177	200	T2
CE51C750P	350	75	118	200	T3
CE51C101P	350	100	88	200	T4
CE51C121P	350	120	74	200	T5
CE51C100Q	400	10	1480	150	T1
CE51C250Q	400	25	890	190	T1
CE51C350Q	400	35	422	200	T1
CE51C400Q	400	40	370	200	T2
CE51C650Q	400	65	228	200	T3
CE51C750Q	400	75	197	200	T4
CE51C101Q	400	100	148		T5
CE51C100R	450	10	2220	150	T1
CE51C150R	450	15	1480	160	T1
CE51C250R	450	25	890	190	T1
CE51C350R	450	35	635	200	T1
CE51C400R	450	40	555	200	T2
CE51C600R	450	60	370	200	T3
CE51C700R	450	70	317	200	T4
CE51C800R	450	80	278	200	T5



CASE SIZE	DIMENSIONS		
	A ± 1/16	B ± .010 / .050	D ± 1/64
T1	2 1/2	1 1/4	1 5/32
T2	2 1/2	1 1/2	1 3/8
T3	3	1 1/2	1 3/8
T4	3 1/2	1 1/2	1 3/8
T5	4 1/4	1 1/2	1 3/8

1 For case size T1, tolerance shall be $\pm .030$ to $-.050$

- All dimensions in inches.
- Tolerances are $\pm .5^\circ$ on angles.
- Number-1 terminal negative.
- Capacitor plugs into a standard, medium octal socket with a $.687 \pm .007$ diameter pin circle. The capacitor shall never have less than four pin terminals.

REF: In Accordance w/ MIL-C62B and Amend.

ISSUE	ITEM	CHANGED FROM	DATE	CH. NO.	DRAFTS	CHECKER	ENG. APP.
A	1	COMPLETELY UPDATED	3-1-63	8350			
TOLERANCES			SCALE:				
DEC. DIM. ±			MAXIMUM ALLOWABLE TOLERANCES HAVE BEEN DETERMINED AND ANY DEVIATIONS WILL BE CAUSE FOR REJECTION.				
FRAC. DIM. ±			REMOVE ALL BURRS AND SHARP EDGES				
ANGULAR DIM. ±							

CE51 C 101 E

Style Characteristic Capacitance Voltage

OPER. TEMP. RANGE -40 TO +85°C

REQ. PER UNIT	MODEL	PROJECT NO.	ASS'Y. NO.	DATE
---------------	-------	-------------	------------	------

PART NO.	DESCRIPTION	SYMBOL
	THE TECHNICAL MATERIEL CORP. MAMARONECK. NEW YORK	
STOCK SIZE	Capacitor; fixed Electrolytic (DC, Aluminum, Dry Electrolytic, Polarized.)	
MATERIAL		
TYPE & TEMPER	HEAT TREAT. SPEC.	DRAWN
		CHECKED
		FINAL APPROVAL
FINISH & SPEC. NO.	ELEC. DES. APP.	MECH. DES. APP.
	CE51	A