

IF IT IS FOUND DESIRABLE TO CHANGE ANY TOLERANCE OR OTHER DETAIL SPECIFIED ON THIS DRAWING NOTIFY THE PURCHASER PROMPTLY.

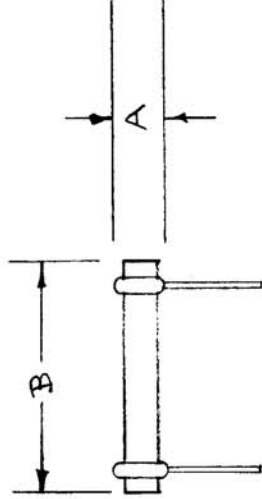
MAXIMUM ALLOWABLE TOLERANCES HAVE BEEN DETERMINED AND DEVIATIONS WILL BE CAUSE FOR REJECTION. REMOVE ALL BURRS AND SHARP EDGES

TMC NO.	CAT. NO.	CAPACITY $\mu\mu\text{f.}$	TEMP. COEF.	A	B	WVDC	MIL EQUIVALENT
CC-103-1	TCN-15	15 \pm 2%	N750	.200	.400	600	CC200U150G

Req. Per UNIT 1

USED ON
MODEL PROJECT NO. ASSY. NO. DATE

CC-103



REF: CENTRALAB DIV. GLOBE-UNION, INC.

REQ. ITEM	PART NO.	DESCRIPTION	SYMBOL
		THE TECHNICAL MATERIEL CORP. MAMARONECK, NEW YORK	
		CAPACITOR, FIXED	
		CERAMIC	
		STOCK SIZE	
		MATERIAL	
		TYPE & TEMPER	
		HEAT TREAT. SPEC.	
		FINISH & SPEC. NO.	

ISSUE ITEM	CHANGED FROM	DATE	CN. NO.	DRAFTS CHECKER	ENG. APP.
A 2	MIL. EQUIV. ADDED	1-2-62	6311	AS	AS
A 1	$\pm 2\%$ WAS $\pm .5\%$ ON Capacity				

DRAWN	ELEC. DES. APP.	MECH. DES. APP.
CSB	A. J. J.	WJC
CHECKED	A. J. J.	
	FINAL APPROVAL	
		CC-103
		A