

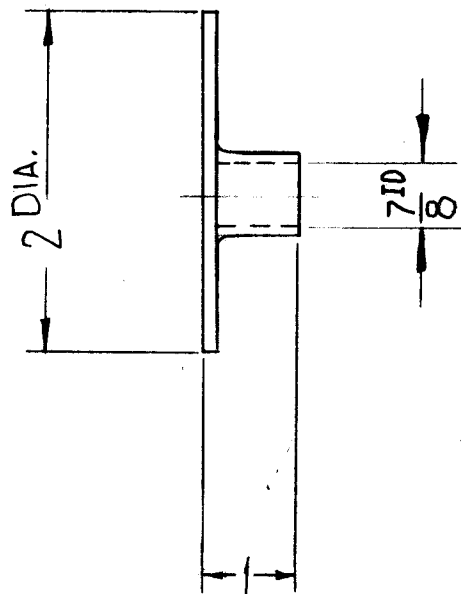
CHART 1				
CAPACITANCE AVAILABLE		DIM -A-	DIM -B-	DIM -C-
TMC CODE	CAP. IN MMFD	O/A LENGTH		DIA. (MAX.)
200	5-200	8-3/8 ± 1/8	4-1/4 ± 1/8	2-5/8
300	10-300	8-3/4 ± 1/8	4-5/8 ± 1/8	2-9/16
400	10-400	9 ± 3/16	4-13/16 ± 3/16	3-1/8
500	25-500	9 ± 3/16	4-13/16 ± 3/16	3-1/8

CHART 2	
VOLTAGE AVAILABLE	
TMC CODE	VOLTAGE PEAK
7.5	7.5 KV
10	10 KV
15	15 KV

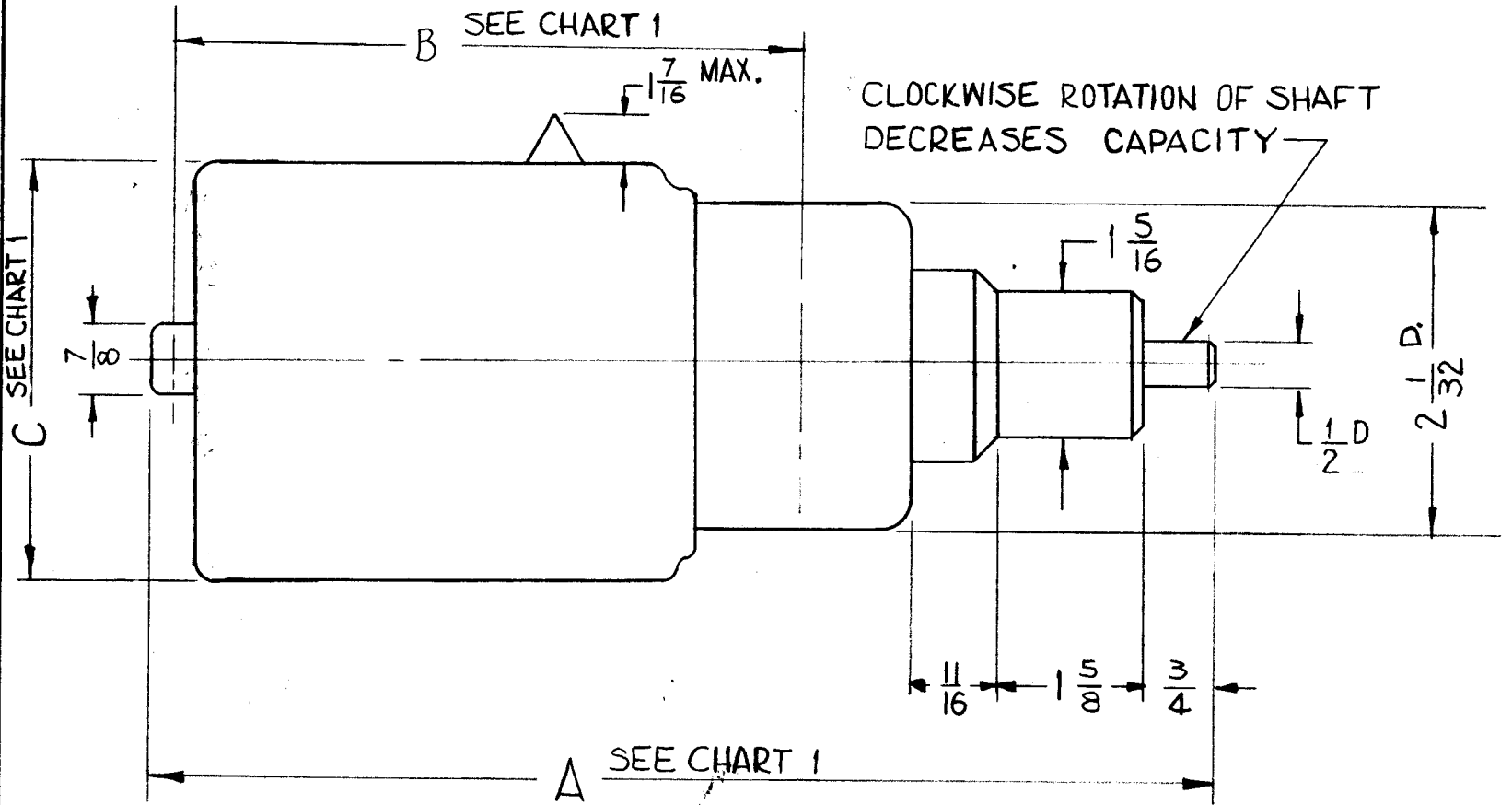
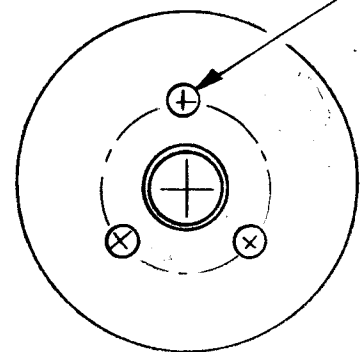
NOTE - CURRENT RATING - 42 AMPS RMS (AT 75°F AT 22 MC AT RATED VOLTAGE.)

CHART 3	
FLANGE ARRANGEMENT	
TMC CODE	ARRANGEMENT
A	NO FLANGES
B	NO VARIABLE END FLANGE FIXED END FLANGE WELDED TO END

FIXED END FLANGE
TYPE FM/B (W/O LOCKING DEVICE)
.032 COPPER, SILVER PLATED



3 HOLES, 3/16 D., 120° APART, ON 3/4 R.



NOTE -
THIS FLANGE REQ ONLY WHEN CALLED FOR
IN PART NO, AS PER "B" TYPE FLANGE
ARRANGEMENT.

TMC PART NO. TO BE IN FOLLOWING
FORM:

CB 136 - 400 - 7.5 A

BASIC TMC PART NO.	MAX. CAPACITANCE DESIRED (IN MMFD) SEE CHART 1 TMC CODE	VOLTAGE DESIRED IN KV SEE CHART 2 TMC CODE	FLANGE ARRANGEMENT DESIRED SEE CHART 3 TMC CODE
-----------------------	--	--	---

EXAMPLE: CB 136-400-7.5A CAPACITOR, VARIABLE,
VACUUM 10 to 400 MMFD; 7.5KV, NO FLANGES

REF. NOTE -
WHEN THIS CAPACITOR REQUIRES LOOSE MTG.
FLANGES, USE TMC DWG. No. PO 185-1 FOR
FIXED END & PO 185-2 FOR VARIABLE END.

SYM	DESCRIPTION	DATE	CH. NO.	DRAFTS	CHECKER	ENG. APP.
C	1" DIM. WAS 1-3/16	1-19-66	15544	<i>MLB</i>	<i>OCB</i>	<i>QA</i>
B	±1° Was ± 1/2° On Angles Tolerances ±1/32 Was ± 1/64 On Frac. TOLERANCES	11-6-61	5815	<i>EB</i>	<i>OCB</i>	<i>QA</i>
A	REVISED & REDRAWN FROM 1 SIZE	5-31-61	4866	<i>RLU</i>	<i>OCB</i>	<i>QA</i>

UNLESS OTHERWISE SPECIFIED:
DIMENSIONS ARE IN INCHES
TOLERANCES ON
FRACTIONS ± 1/32 DECIMALS ± .005 ANGLES ± 1°

SCALE: 5-401-48 (UCS)
MAXIMUM ALLOWABLE TOLERANCES HAVE
BEEN DETERMINED AND ANY DEVIATIONS
WILL BE CAUSE FOR REJECTION.
REMOVE ALL BURRS AND SHARP EDGES

REQ. PER UNIT	MODEL	SECTION	ASSY. NO.	DATE

REQ. ITEM	PART NO.	DESCRIPTION	SYMBOL
THE TECHNICAL MATERIEL CORP, MAMARONECK, NEW YORK			
CAPACITOR, VARIABLE, VACUUM			
MATERIAL			
		R UZZO	<i>OCB</i>
		<i>15</i>	<i>QTM</i>
TYPE & TEMPER		DRAWN	CHECKER
HEAT TREAT. SPEC.		FINAL APPROVAL	
FINISH & SPEC. NO.		ELEC. DES. APP. MECH. DES. APP.	
CB 136 C			