

IF IT IS FOUND DESIRABLE TO CHANGE ANY TOLERANCE OR OTHER DETAIL SPECIFIED ON THIS DRAWING NOTIFY THE PURCHASER PROMPTLY.

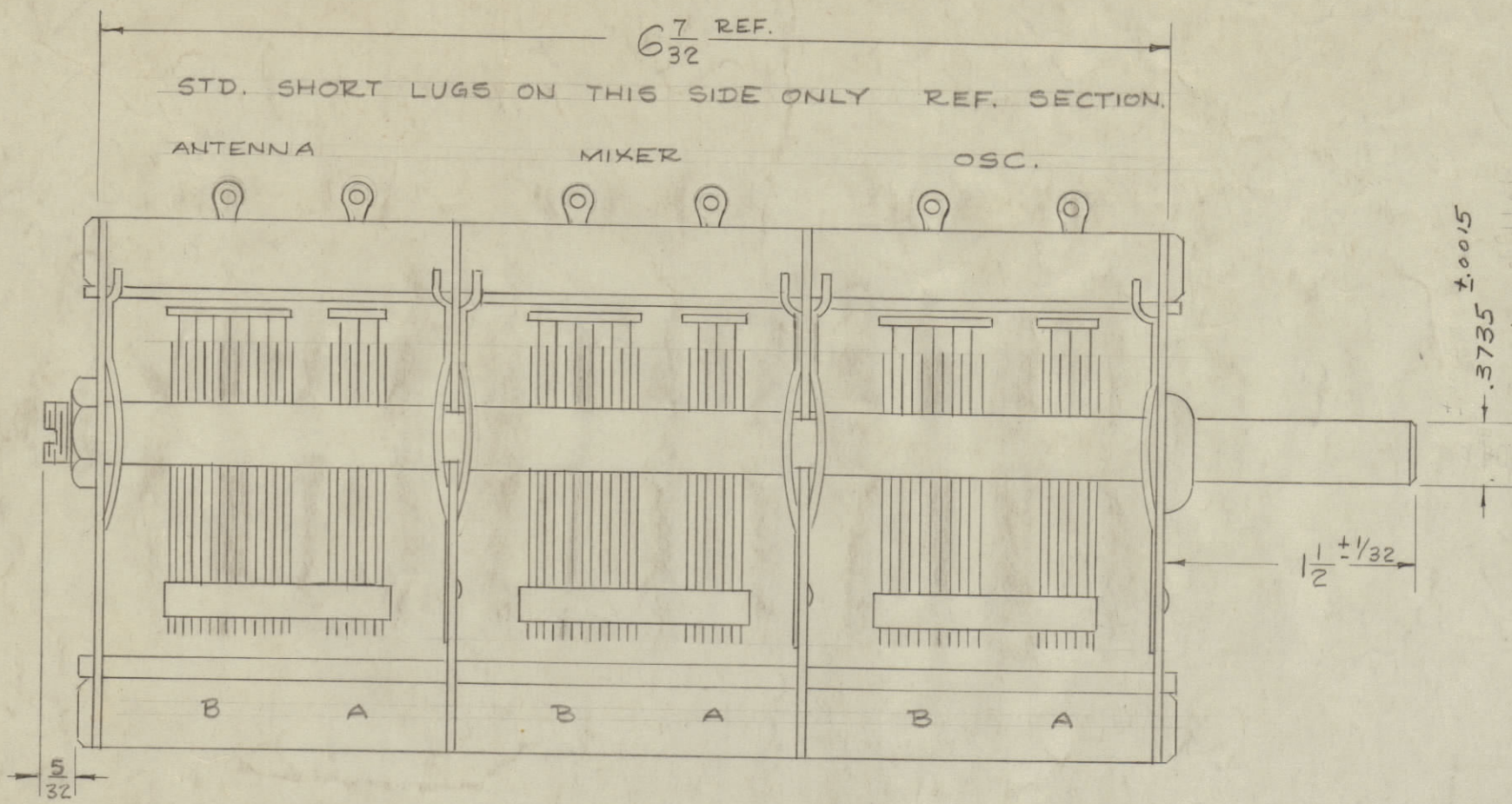
MAXIMUM ALLOWABLE TOLERANCES HAVE BEEN DETERMINED AND DEVIATIONS WILL BE CAUSE FOR REJECTION. REMOVE ALL BURRS AND SHARP EDGES

SERIES 321 TYPE K  
CAPACITANCE mmf

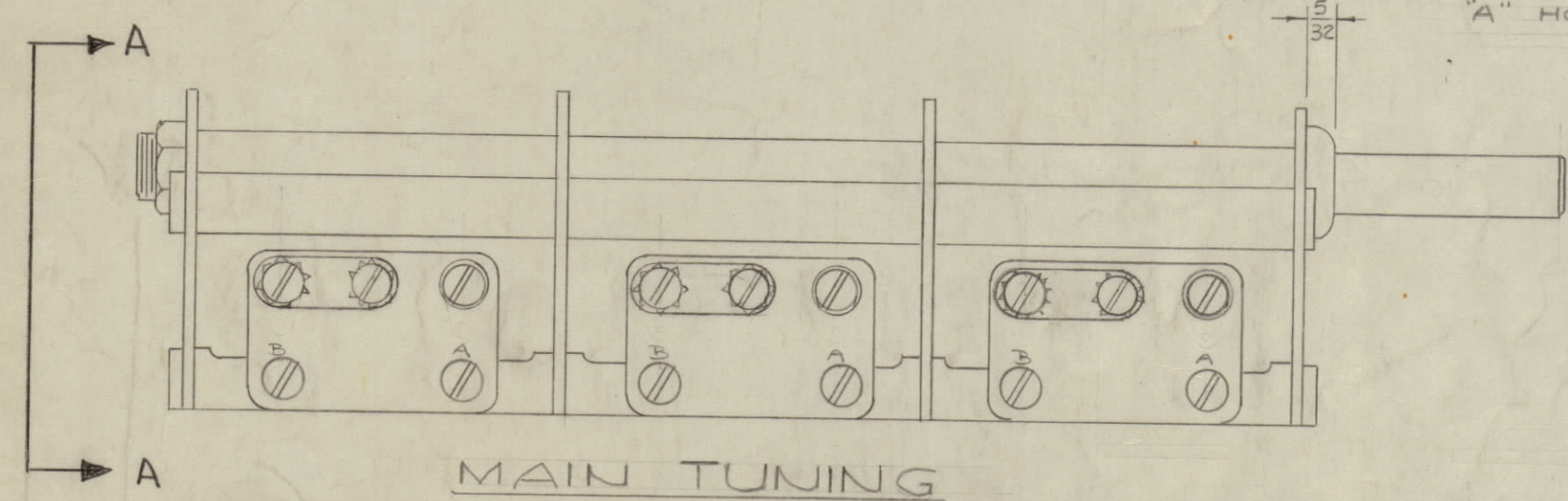
% ROTATION	11 PLATES (A) 6 ROTOR, 5 STATOR	15 PLATES (B) 8 ROTOR, 7 STATOR
0	0	0
10	2.4	3.3
20	7.1	10.0
25	9.9	13.9
30	13.0	18.3
40	20.9	29.2
50	32.0	44.7
60	47.7	66.8
70	68.0	95.3
75	79.2	110.9
80	90.7	127.0
90	113.4	158.7
100	135.0	189.0
MIN	8.0-9.0	10.0-11.0

SERIES 321 TYPE "K" - RADIO CONDENSER CO.

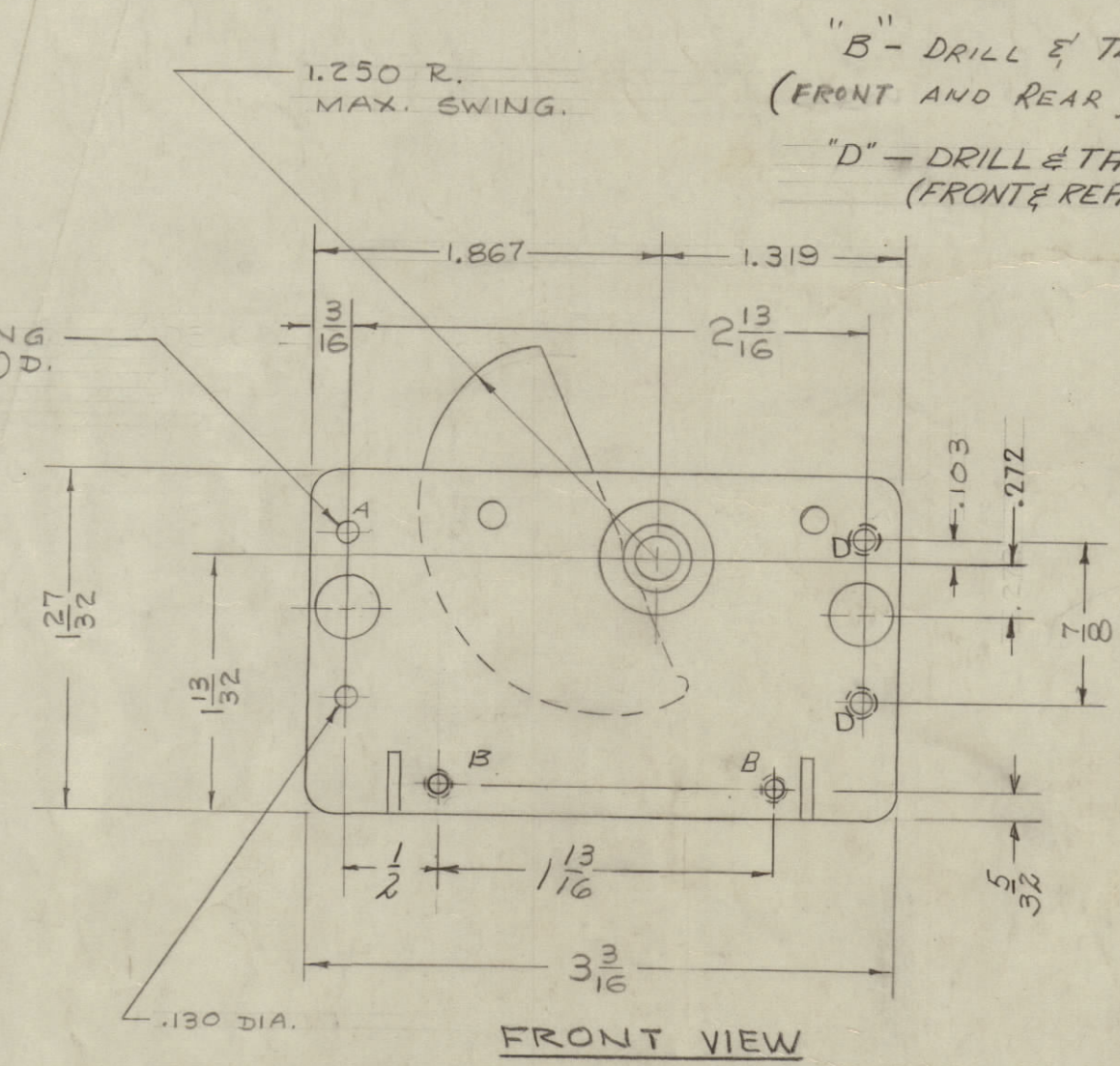
TYPE - STRAIGHT LINE FREQUENCY.  
THREE SECTIONS - SEE CHART.  
ROTOR & STATOR PLATES - CADMIUM PLATED STEEL WHICH ARE SWAGED, STAKED AND SOLDERED TO ROTOR SHAFT AND STATOR SPACING BRACKET RESPECTIVELY.  
WIPERS - 6 ALL ON SHORT SIDE.  
STATOR INSULATION - CERAMIC.  
ROTOR TENSION - 12" OZ. MAX.  
ROTATION - CAPACITY INCREASES COUNTER-CLOCKWISE.  
NOMINAL AIR GAP - 0.0235.



OSCILLATOR SECTION OF CONDENSER CALIBRATED AT 25%, 50%, 75%, 100% ROTATION (TOLERANCE ±1% OR 1 mmf WHICHEVER IS GREATER) ANTENNA & MIXER SECTIONS TO BE TRACKED TO OSCILLATOR SECTION AT 25%, 50%, 75%, 100%. (TOLERANCE ±1 mmf)

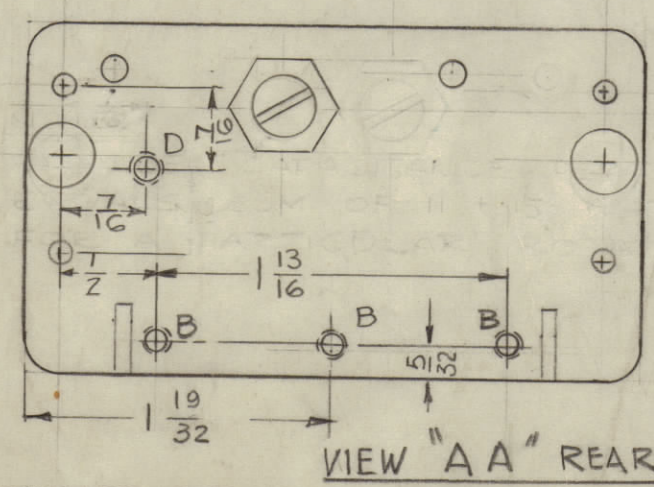


ENLARGE CORRESPONDING "A" HOLES TO 5/32 (.156) D.  
2 IN FRONT &  
2 IN REAR



"B" - DRILL & TAP 6-32 (FRONT AND REAR) 5 REQ  
"D" - DRILL & TAP 10-32 (FRONT & REAR) 3 REQ

CB-130 K



NOTE: PARALLEL CAPACITANCE PER SECTION EQUALS SUM OF 11+15 PLATE CAPACITORS FOR A PARTICULAR ROTATION.

NOTICE TO PERSONS RECEIVING THIS DRAWING  
THE TECHNICAL MATERIEL CORPORATION claims proprietary right in the material disclosed hereon. This drawing is issued in confidence for engineering information only and may not be reproduced or used to manufacture anything shown hereon without permission from THE TECHNICAL MATERIEL CORPORATION to the user. This drawing is loaned for mutual assistance and is subject to recall at any time.  
Property of:  
THE TECHNICAL MATERIEL CORPORATION  
MAMARONECK, NEW YORK

ISSUE	ITEM	CHANGED FROM	DATE	CN. NO.	DRAFTS	CHECKER	ENG. APP.
K	1	DIMS & PICTORIAL CLARIFIED ON REAR VIEW	7-8-63	9445			
J	2	PICTORIAL CORRECTED ON FRONT HOLES WERE "A"	6-17-63	9304			
H	1	ADDED 3 "D" HOLES (FRONT & REAR)	4-26-63	8833			
G	1	.272 DIM CLARIFIED	2-14-63	8290			
F	1	(2) "B" HOLES ADDED	10/23/58	7564	G.D.L.		
E	1	VIEW "AA" ADDED - 18 HOLES DETAIL	7/29/58	411	JVC		
D	2	ADDED "B" TAPS	11/4/58	4	JVC		
C	1	DIM. CHG. .3785" TO .378" WAS 3/8. CHG. VIEWS AGREE W/DETAILS	9/26/56	3	JVC		
B	2	TOL. WAS ±(1% + 1 mmf)	7/9/56	2	JVC		
A	1	MIN (15 PLATES WAS) 9.0 - 10.0 MIN (11 PLATES WAS) 8.5 - 9.5 MIN. 8.5 - 9.5 WAS 8.5 MIN. 9.0 - 10.0 WAS 9.0 ±(1% + 1) mmf WAS ± .5 mmf.	3/12/56	1	B		A.J.J.

REQ.	ITEM	PART NO.	DESCRIPTION	SYMBOL
			THE TECHNICAL MATERIEL CORP. MAMARONECK, NEW YORK	
			CAPACITOR, VARIABLE	
			AIR TUNING MAIN TUNING	
			P33-2-56	###
			DRAWN	ELEC. DES. APP. MECH. DES. APP.
			CHECKED	FINAL APPROVAL
				A. J. J.
				CB-130 K

MODEL	PROJECT NO.	ASS'Y. NO.	DATE
GPR-92			10-29-62
GPR-90			5-13-58