

IF IT IS FOUND DESIRABLE TO CHANGE ANY TOLERANCE OR OTHER DETAIL SPECIFIED ON THIS DRAWING NOTIFY THE PURCHASER PROMPTLY.

MAXIMUM ALLOWABLE TOLERANCES HAVE BEEN DETERMINED AND DEVIATIONS WILL BE CAUSE FOR REJECTION. REMOVE ALL BURRS AND SHARP EDGES

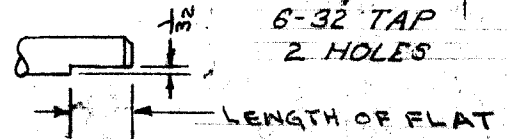
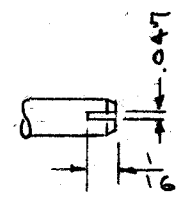
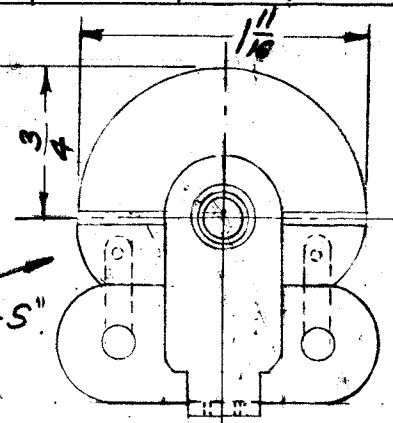
# STANDARD DRAWING

CB-118

TYPE	PLATE STYLE	NOMINAL AIR GAP	RMS	CYCLES
M	MID-LINE	0.0245"	1000V	60
S	STRAIGHT LINE	0.0245"	1000V	60
X	WIDE SPACED	0.0715"	1750V	60

HAMMARLUND PART NO	CAPACITY		PLATES/SECTION	"L"
	MAX	MIN		
MC-20-S	20	5.5	3	1 1/32
MC-35-S	35	6.0	5	1 1/2
MC-50-M	50	6.3	7	1 1/2
MC-50-S	50	6.5	7	1 1/2
MC-75-M	80	7.3	11	1 1/2
MC-75-S	80	8.0	11	1 1/2
MC-100-M	100	7.7	14	1 13/32
MC-100-S	100	8.3	14	1 1/2
MC-140-M	140	9.0	19	1 15/32
MC-140-S	140	10.0	19	1 1/2
MC-200-M	200	10.3	27	2
MC-250-M	250	12.0	34	2 5/16
MC-325-M	320	13.5	43	2 23/32
MC-20-SX	20	6.8	7	1 13/32
MC-35-MX	32	7.8	11	1 15/32
MC-35-SX	32	8.5	11	1 15/32
MC-50-MX	53	10.5	19	2 5/16
MC-50-SX	53	11.5	19	1 1/2
MC-100-SX	100	16.5	35	3 23/32
MC-200-S	200	10.0	27	2"

LETTER	STYLE
F	FLATTED
R	ROUND
S	SLOTTED



SLOTTED SHAFT — FLATTED SHAFT (STANDARD PART)

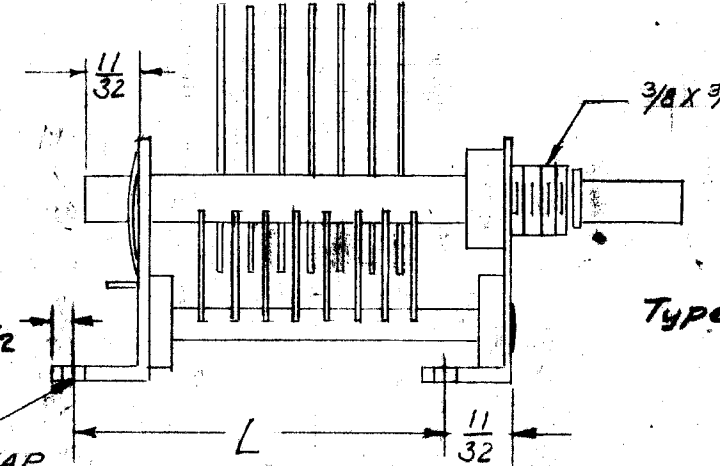
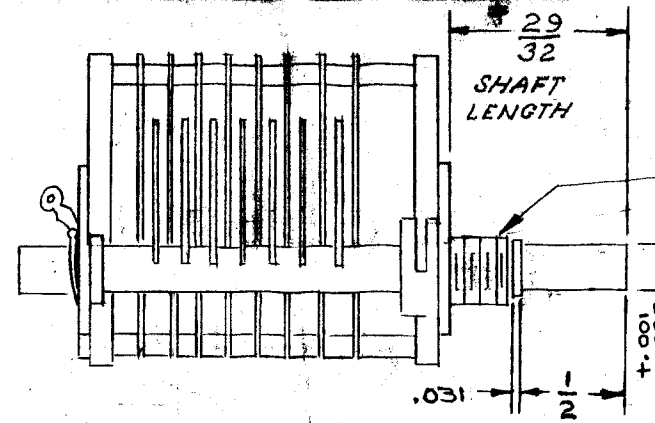
CB-118-S-F-D-140

COMPONENT SH. STYLE MAX. CAP.\*

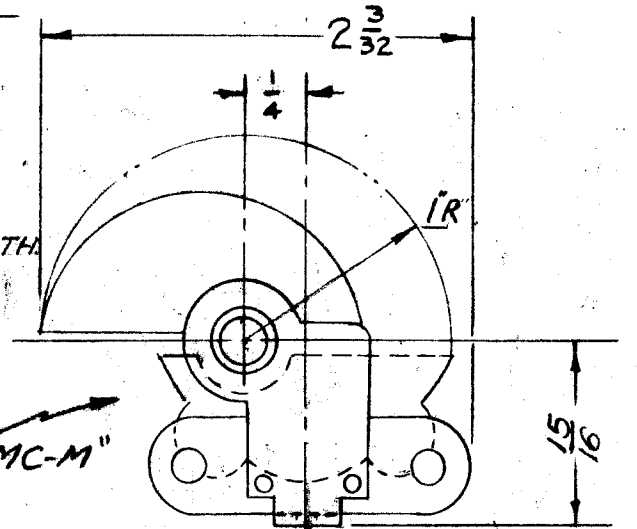
\* CHARACTERISTIC SHAFT LENGTH (COMMERCIAL LENGTH)

TYPE DESIGNATION TO BE IN ABOVE FORM

LETTER DESIGNATION	ROUND OR FLATTENED	SLOTTED	LENGTH OF FLAT.
A	—	5/8	—
C	—	3/4	—
D	7/8	7/8	.375 ± .010
E	1	—	.500 ± .010
G	1 1/4	1 1/4	.625 ± .010
H	1 1/2	1 1/2	.625 ± .010
J	2	2	.625 ± .010
K	2 1/2	2 1/2	2.125 ± .010
X	2 9/32	2 9/32	2.125 ± .010



NOTE - HEX. NUT & TWO WASHERS SUPPLIED BY MFG. TMC EQUIV. - NTH3732BN16, & FW37MSN. \* 2 9/32 LENGTH IS COMMERCIAL STANDARD



NOTE: Commercial Standard Length 2 9/32 The price differential between the standard commercial shaft length 2 9/32 and shafts listed in chart is very great. Therefore, shaft lengths shown in chart will only be used when no other choice is possible.

REF: HAMMARLUND MFG CO. SERIES MC

ISSUE	ITEM	CHANGED FROM	DATE	CN. NO.	DRAFTS	CHECKER	ENG. APP.
E	1	MC-200-S ADDED TO CHART	3-27-62	6525	G.S.	AM	AM
D	2	1/2 ADDED	5/5/57	4	SC.	AM	AM
D	1	5/32 ADDED					
C	1	2 3/32 ADDED					
C	1	NOTES ADDED	1/24/57	3	SC.	AM	AM
B	1	"L" DIM. ADDED	8/11/56	2	SC.	AM	AM
A	1	COMPLETE REVISION	10-1-54	1	G.P.D.	AM	AM

\* MAX. CAPACITY IN μf ALWAYS EXPRESSED IN 3 DIGITS. FOR VALUES BELOW 100 SUBSTITUTE A ZERO FOR FIRST DIGIT.

EXAMPLES:  
140 = 140 μf  
032 = 32 μf  
010 = 10 μf

REQ.	ITEM	PART NO.	DESCRIPTION	SYMBOL
THE TECHNICAL MATERIEL CORP. MAMARONECK. NEW YORK				
CAPACITOR, VARIABLE TUNING				
SINGLE SECTION				
MATERIAL		WEIGHT PER PC.		
TYPE & TEMPER		HEAT TREAT. SPEC.		
DRAWN		ELEC. DES. APP.		
CHECKED		FINAL		

TOLERANCES	SCALE:
ALL OTHERS	DEC. DIM. ± FRAC. DIM. ± ANGULAR DIM. ±
DRILL, PUNCH, COMMERCIAL STOCK SIZES AND MANUFACTURERS TOLERANCES ARE NOT INCLUDED.	

MODEL	PROJECT NO.	ASSY. NO.	DATE

IF IT IS FOUND DESIRABLE TO CHANGE ANY TOLERANCE OR OTHER DETAIL SPECIFIED ON THIS DRAWING NOTIFY THE PURCHASER PROMPTLY.

MAXIMUM ALLOWABLE TOLERANCES HAVE BEEN DETERMINED AND DEVIATIONS WILL BE CAUSE FOR REJECTION. REMOVE ALL BURRS AND SHARP EDGES

# STANDARD DRAWING

CB-118 E

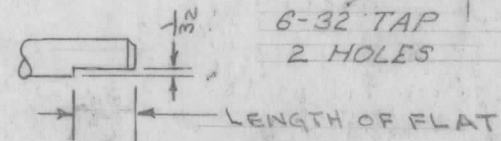
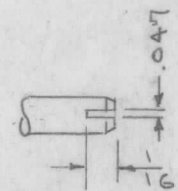
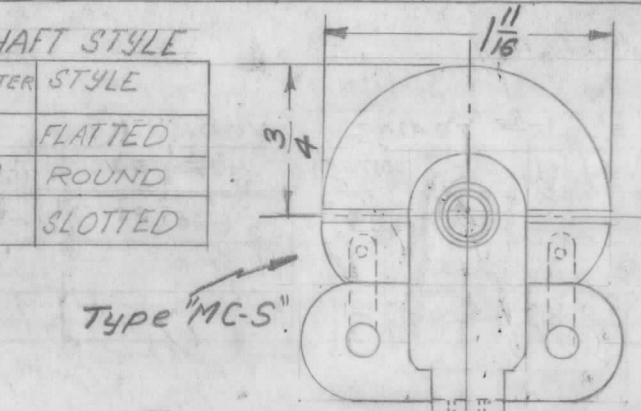
HAMMARLUND PART NO	CAPACITY		PLATES/SECTION	"L"
	MAX	MIN		
MC-20-S	20	5.5	3	1 1/32
MC-35-S	35	6.0	5	1 1/2
MC-50-M	50	6.3	7	1 1/2
MC-50-S	50	6.5	7	1 1/2
MC-75-M	80	7.3	11	1 1/2
MC-75-S	80	8.0	11	1 1/2
MC-100-M	100	7.7	14	1 13/32
MC-100-S	100	8.3	14	1 1/2
MC-140-M	140	9.0	19	1 15/32
MC-140-S	140	10.0	19	1 1/2
MC-200-M	200	10.3	27	2
MC-250-M	250	12.0	34	2 1/16
MC-325-M	320	13.5	43	2 23/32
MC-20-SX	20	6.8	7	1 13/32
MC-35-MX	32	7.8	11	1 19/32
MC-35-SX	32	8.5	11	1 19/32
MC-50-MX	53	10.5	19	2 5/16
MC-50-SX	53	11.5	19	1 1/2
MC-100-SX	100	16.5	35	3 29/32
MC-200-S	200	10.0	27	2"

### PLATE CHARACTERISTICS

TYPE	PLATE STYLE	NOMINAL AIR GAP	RMS	CYCLES
M	MID-LINE	0.0245"	1000V	60
S	STRAIGHT LINE	0.0245"	1000V	60
X	WIDE SPACED	0.0715"	1750V	60

### SHAFT STYLE

LETTER	STYLE
F	FLATTED
R	ROUND
S	SLOTTED



SLOTTED SHAFT (STANDARD PART)      FLATTED SHAFT

CB-118-S-F-D-140

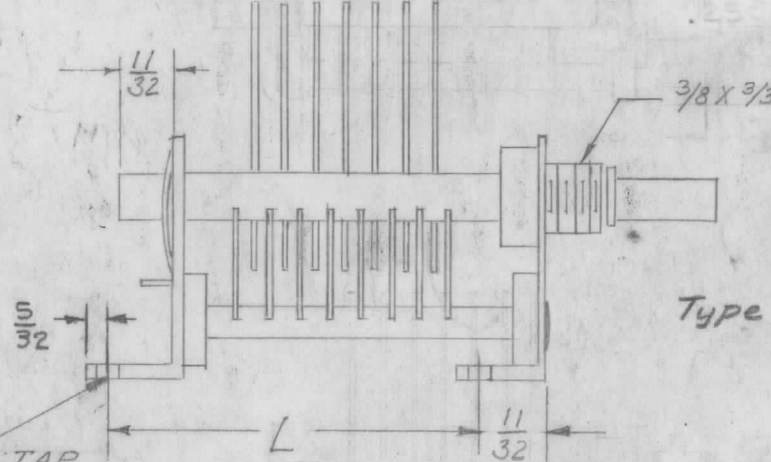
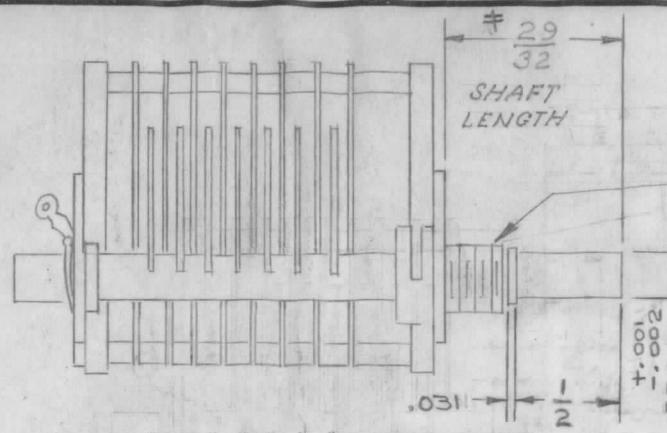
COMPONENT      SH. STYLE      MAX. CAP. \*

\* CHARACTERISTIC SHAFT LENGTH

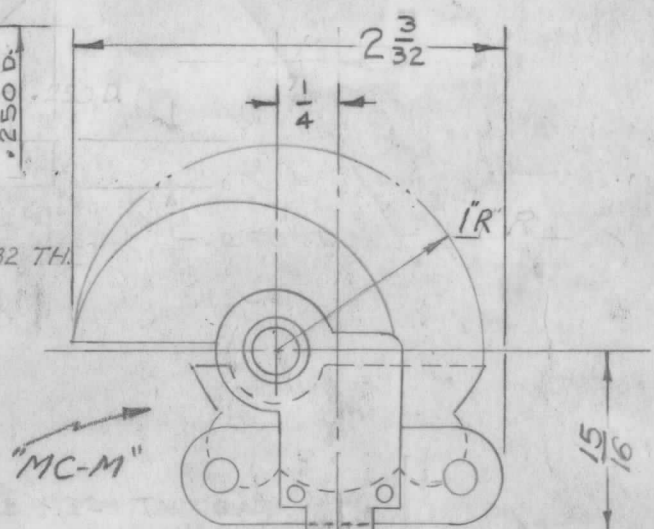
(COMMERCIAL LGTH. IS 29/32")

TYPE DESIGNATION TO BE IN ABOVE FORM

LETTER DESIGNATION	ROUND OR FLATTENED	SLOTTED	LENGTH OF FLAT
A	—	5/8	—
C	—	3/4	—
D	7/8	7/8	.375 ± .010
E	1	—	.500 ± .010
G	1 1/4	1 1/4	.625 ± .010
H	1 1/2	1 1/2	.625 ± .010
J	2	2	.625 ± .010
K	2 1/2	2 1/2	2.125 ± .010
X	29/32	ROUND SHAFT (COMM. STAN.)	SEE NOTE



NOTE - HEX. NUT & TWO WASHERS SUPPLIED BY MFG. TMC EQUIV. - NTH3732BN16, & FW37M5N. #29/32 LENGTH IS COMMERCIAL STANDARD.



NOTE: Commercial Standard Length 29/32 The price differential between the standard commercial shaft length 29/32 and shafts listed in chart is very great. Therefore, shaft lengths shown in chart will only be used when no other choice is possible.

REF: HAMMARLUND MFG CO. SERIES MC

\* MAX. CAPACITY IN μmf ALWAYS EXPRESSED IN 3 DIGITS. FOR VALUES BELOW 100 SUBSTITUTE A ZERO FOR FIRST DIGIT.

EXAMPLES:  
140 = 140 μmf  
032 = 32 μmf  
010 = 10 μmf

ISSUE	ITEM	CHANGED FROM	DATE	CN. NO.	DRAFTS	CHECKER	ENG. APP.
E	1	MC-200-S ADDED TO CHART	3-27-62	6525	G.S.	AM	ML
D	3	1/2 ADDED	5/5/57	4	SC.	AM	AM
	2	5/32 ADDED					
C	1	2 3/32 ADDED	1/23/57	3	SC.	AM	AM
	1	NOTES ADDED					
B	1	"L" DIM. ADDED	8/21/56	2	SC.	AM	AM
A	1	COMPLETE REVISION	10-1-54	1	C.D.D.	AM	A. J.

TOLERANCES		SCALE:	
ALL OTHERS	DEC. DIM. ± FRAC. DIM. ± ANGULAR DIM. ±	DRILL, PUNCH, COMMERCIAL STOCK SIZES AND MANUFACTURERS TOLERANCES ARE NOT INCLUDED.	

MODEL	PROJECT NO.	ASS'Y. NO.	DATE

REQ.	ITEM	PART NO.	DESCRIPTION	SYMBOL
<b>THE TECHNICAL MATERIEL CORP.</b>				
STOCK SIZE				
MAMARONECK. NEW YORK				
CAPACITOR, VARIABLE TUNING				
MATERIAL WEIGHT PER PC.				
SINGLE SECTION				
TYPE & TEMPER				
DRAWN		ELEC. DES. APP.		MECH. DES. APP.
HEAT TREAT. SPEC.		CHECKED		FINAL APPROVAL
FINISH & SPEC. NO.				