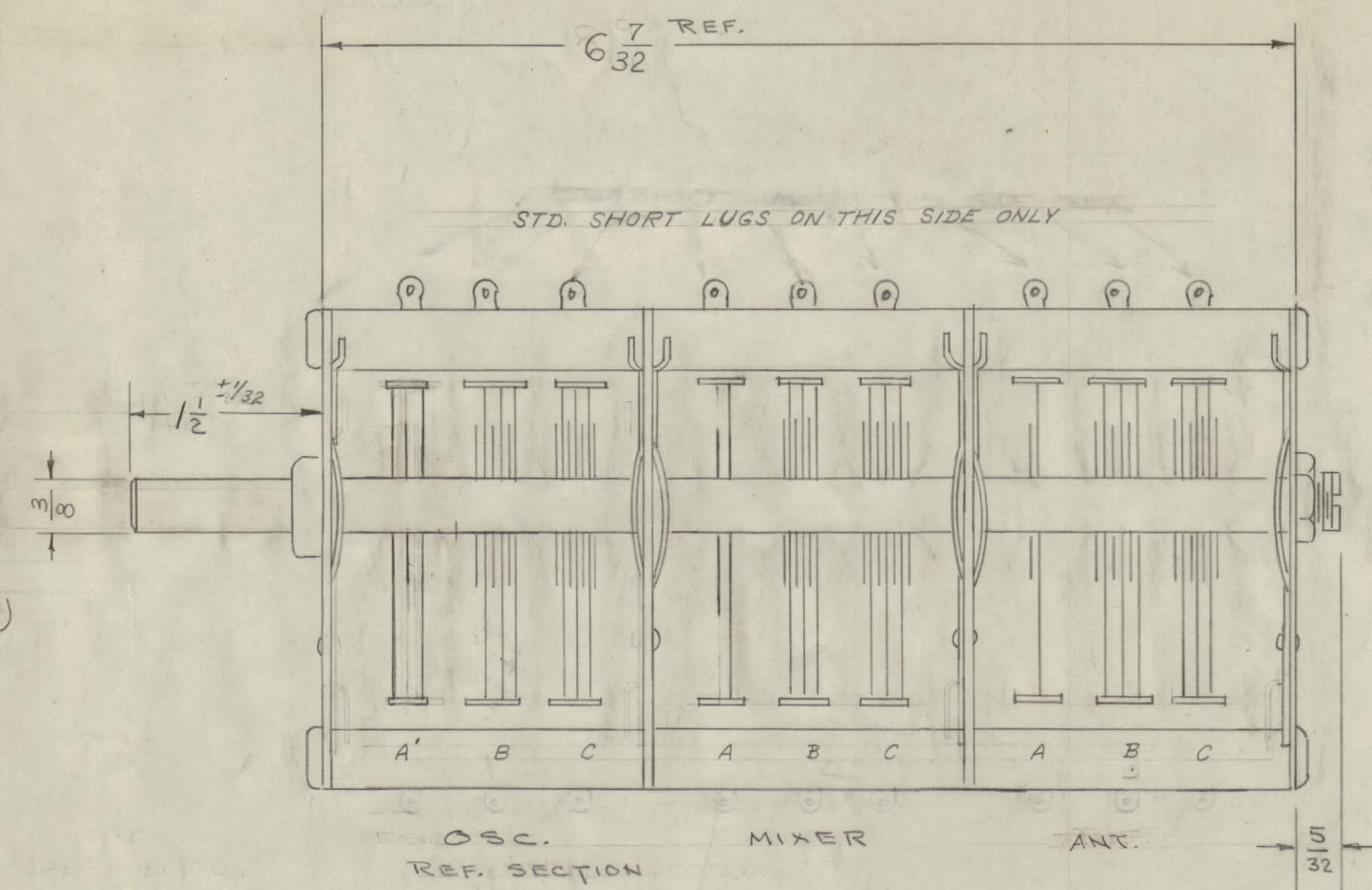


IF IT IS FOUND DESIRABLE TO CHANGE ANY TOLERANCE OR OTHER DETAIL SPECIFIED ON THIS DRAWING NOTIFY THE PURCHASER PROMPTLY.

MAXIMUM ALLOWABLE TOLERANCES HAVE BEEN DETERMINED AND DEVIATIONS WILL BE CAUSE FOR REJECTION. REMOVE ALL BURRS AND SHARP EDGES

SECTIONS ANT-MIXER	CAPACITANCE mmf		NO. OF PLATES		NOMINAL AIR GAP
	MIN.	ΔC	ROTOR	STATOR	
A	8.0	6.3	1	1	.018"
B	8.6	12.9	3	3	.047"
C	9.7	38.5	4	3	.018"

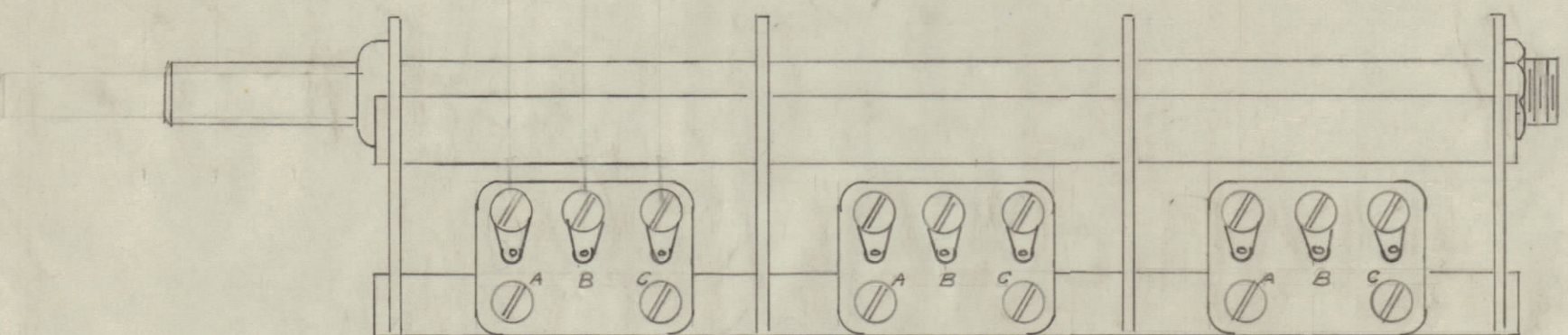
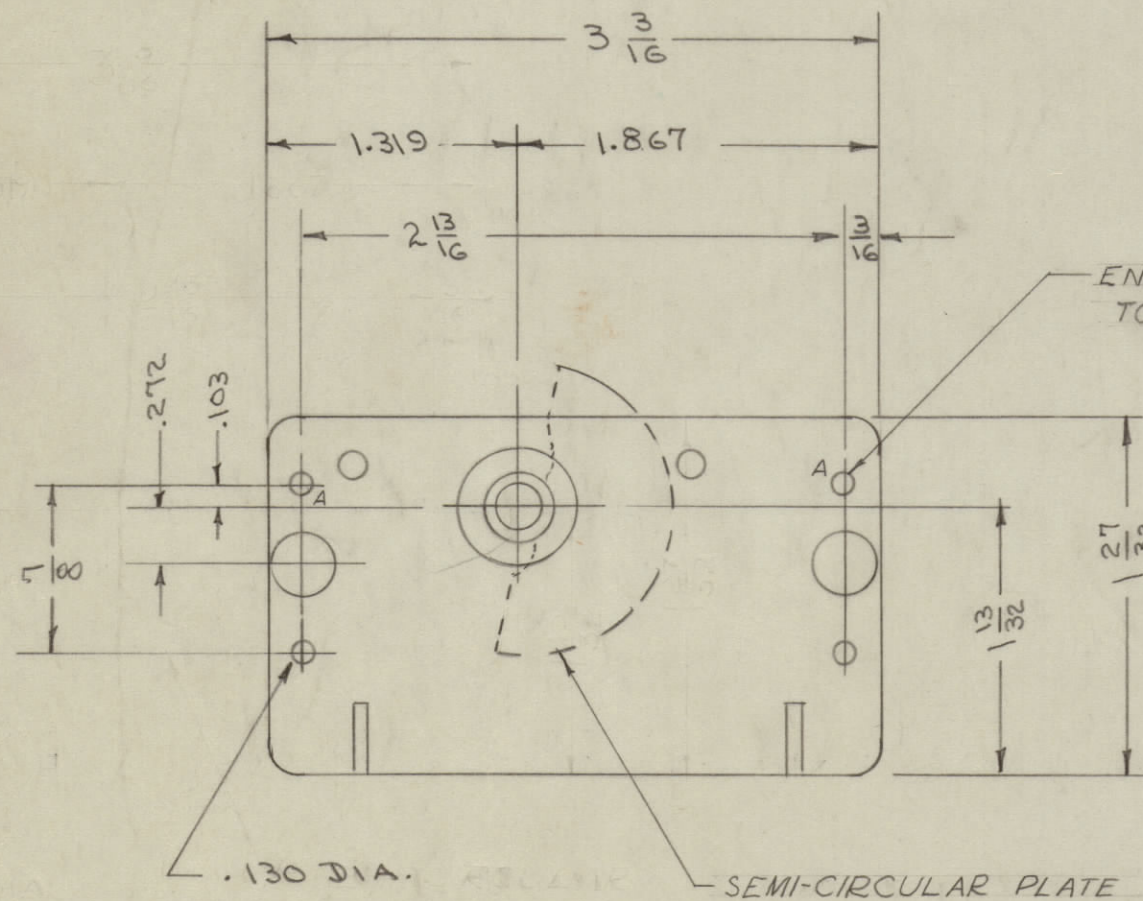
SECTION OSC.	CAPACITANCE mmf		NO. OF PLATES		NOMINAL AIR GAP
	MIN.	ΔC	ROTOR	STATOR	
A'	8.0	6.3	1	2	.047"
B	8.6	12.9	3	3	.047"
C	9.7	38.5	4	3	.018"



NOTICE TO PERSONS RECEIVING THIS DRAWING
 THE TECHNICAL MATERIEL CORPORATION claims proprietary right in the material disclosed hereon. This drawing is issued in confidence for engineering information only and may not be reproduced or used to manufacture anything shown hereon without permission from THE TECHNICAL MATERIEL CORPORATION to the user. This drawing is loaned for mutual assistance and is subject to recall at any time.

Property of:
 THE TECHNICAL MATERIEL CORPORATION
 MAMARONECK, NEW YORK

CALIBRATION: TOLERANCE ON C MIN. ΔC = ± .5 μmf
 ANTENNA & MIXER SECTIONS TO BE MATCHED AT 100% ROTATION TO OSCILLATOR SECTION (TOLERANCE ± .5 μmf)



BAND SPREAD

SERIES 321 - RADIO CONDENSER MFG. CO.
 TYPE - STRAIGHT LINE CAPACITANCE.
 THREE SECTIONS - SEE CHART.
 ROTATION - 360°.
 ROTOR PLATES - SEMI-CIRCULAR; OUTSIDE PLATES SERATED.
 WIPERS - 6 ALL ON SHORT SIDE.
 STATOR INSULATION - CERAMIC.
 ROTOR TENSION 12" OZ. MAX.
 ROTOR & STATOR PLATES - ALUMINUM WHICH ARE SWAGED & STAKED AND SOLDERED TO ROTOR SHAFT.

ISSUE	ITEM	CHANGED FROM	DATE	CN. NO.	DRAFTS	CHECKER	ENG. APP.
H	1	"A" HOLE DETAIL ADDED	1-6-50	2	B	HH	A.J.J.
G	1	CHART ADDED	9-16-49	7	B	GD	G.T.O.
F	1	SEE REVISION NOTE	8/15/48	6	B	G.T.O.	G.T.O.
E	1	SHAFT WAS 1/4	1/15/48	5	GD	GD	HH
D	1	6/32 WAS 8/16	3/18/48	4	B	HH	G.T.O.
C	1	1/4 WAS 2/4	2/14/48	3	GD	GD	HH
B	1	SHAFT WAS 1/4 D	2/14/48	3	GD	GD	HH
B	1	WIPERS CHANGED FROM 4 TO 6 AND DIRECTION	2/14/48	2	B	GD	G.T.O.
A	1	COMPLETELY REVISED	2/15/47	1	J	G.T.O.	HH

TOLERANCES		SCALE:
ALL OTHERS	DEC. DIM. ± FRAC. DIM. ± ANGULAR DIM. ±	DRILL, PUNCH, COMMERCIAL STOCK SIZES AND MANUFACTURERS TOLERANCES ARE NOT INCLUDED.

REQ. PER UNIT	MODEL	PROJECT NO.	ASS'Y. NO.	DATE
1	GPR	297		8-3-54

REQ.	ITEM	PART NO.	DESCRIPTION	SYMBOL
THE TECHNICAL MATERIEL CORP. MAMARONECK, NEW YORK				
STOCK SIZE		CAPACITOR, VARIABLE		
MATERIAL		AIR TUNING		
TYPE & TEMPER		GD	G.T.O.	
HEAT TREAT. SPEC.		GD	G.T.O.	
FINISH & SPEC. NO.		CB-117		