

IF IT IS FOUND DESIRABLE TO CHANGE ANY TOLERANCE OR OTHER DETAIL SPECIFIED ON THIS DRAWING NOTIFY THE PURCHASER PROMPTLY.

MAXIMUM ALLOWABLE TOLERANCES HAVE BEEN DETERMINED AND DEVIATIONS WILL BE CAUSE FOR REJECTION. REMOVE ALL BURRS AND SHARP EDGES

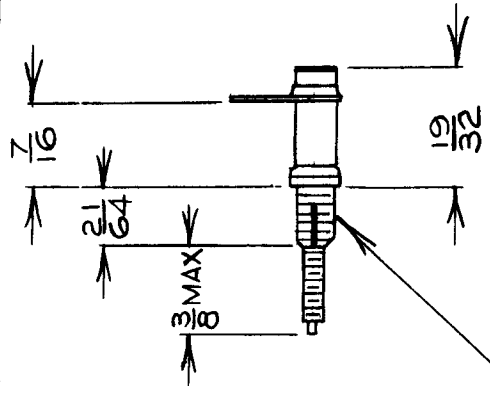
STANDARD DRAWING

CB10002

USED ON

MODEL PROJECT NO. ASSY. NO. DATE

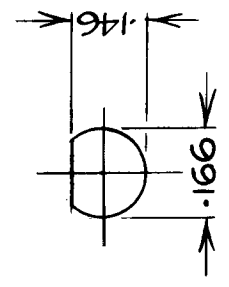
AMC6-5 CE646 A10206 JUNE 22 1959



NOTICE TO PERSONS RECEIVING THIS DRAWING

THE TECHNICAL MATERIEL CORPORATION claims proprietary right in the material disclosed herein. This drawing is issued in confidence for anyone to manufacture anything shown herein without permission from THE TECHNICAL MATERIEL CORPORATION to the user. This drawing is loaned for mutual assistance and is subject to recall at any time.

8-32 THD.



DRILLING PLAN

Property of:

THE TECHNICAL MATERIEL CORPORATION
MAMARONECK, NEW YORK

REF: CAMBRIDGE THERMIONIC CORP.
PART # CST-50 1.5-12.5 UUF

REQ. ITEM	PART NO.	DESCRIPTION	SYMBOL
		TMC (Canada) LIMITED OTTAWA	
		CAPACITOR	
		VARIABLE	
		DCM	
		DRAWN	M. Va
		ELEC. DES. APP.	MECH. DES. APP.
		CHECKED	1 JMC
		HEAT TREAT. SPEC.	FINAL APPROVAL
		FINISH & SPEC. NO.	CB10002

ISSUE ITEM	CHANGED FROM	DATE	CN. NO.	DRAFTS	CHECKER	ENG. APP.
SCALE NTS						
DRILL, PUNCH, COMMERCIAL STOCK SIZES AND MANUFACTURERS TOLERANCES ARE NOT INCLUDED.						
ALL	DEC. DIM. \pm —					
OTHERS	FRAC. DIM. \pm —					
	ANGULAR DIM. \pm —					