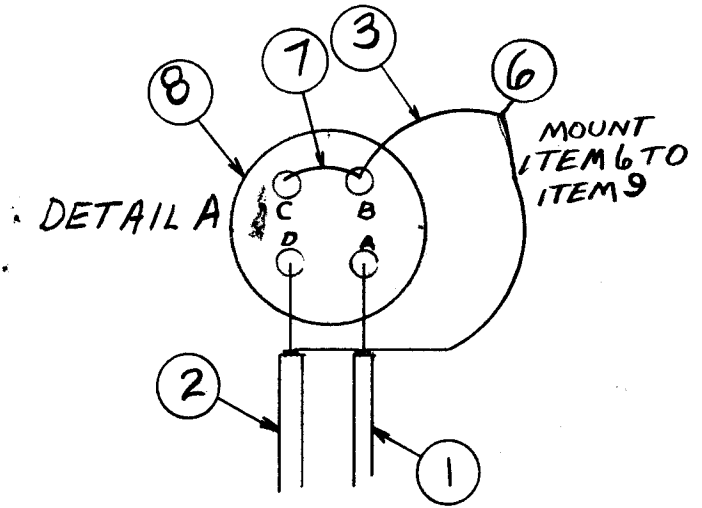
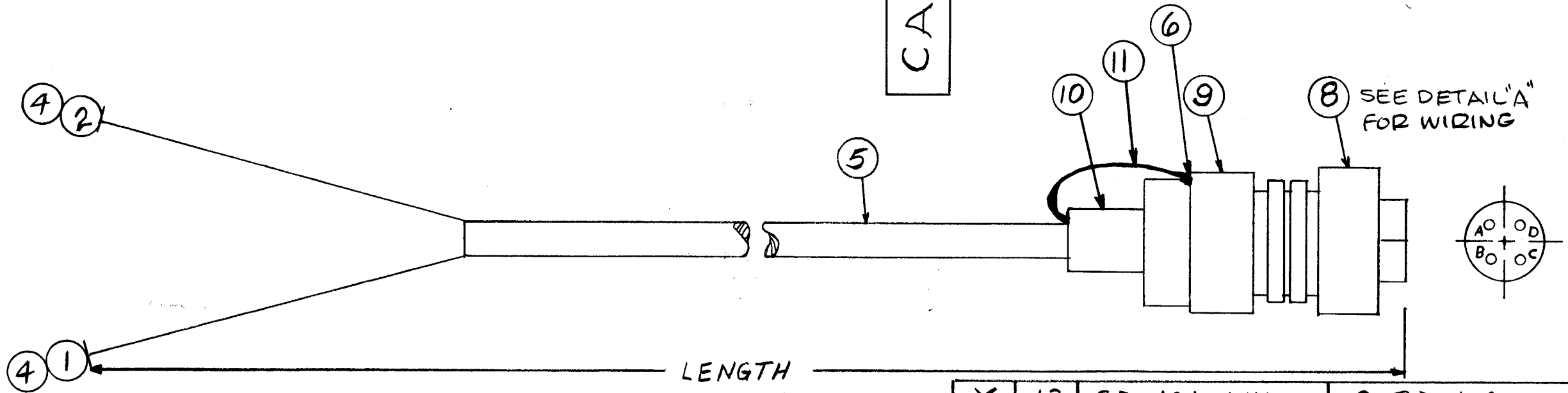


CA983

REVISIONS

SYM	DESCRIPTION	DATE	E.M.N. NO.	DRAFT	CHKD	APPD
Ø	ORIGINAL RELEASE FOR PRODUCTION	6-11-65	-M	JC		



REQ'D.	ITEM	PART NUMBER	DESCRIPTION	SYMBOL
X	13	CD-101-1MW	CORD, LACING	
X	12	BS-100	SOLDER, TIN ALLOY	
4"	11	PX-100-1-234	SLEEVING, INSULATION	
1	10	MS-3420-8A	BUSHING, RUBBER	
1	9	MS 3057-6	CLAMP, ELECTRICAL, CABLE	
1	8	MS3106A14S-2S	PLUG, CONNECTOR, FE	
1"	7	WL-100-7	WIRE, ELECTRICAL, BUSS	
1	6	TE155-34168	LUG, TERMINAL, IN	
X	5	PX-100-1-438	SLEEVING, INSULATION	
2	4	PL-192	PLUG, CONNECTOR, RF. ANGLE	
5"	3	MWC22(7)UO	WIRE, ELECTRICAL, INSULATED	
X	2	RG58/U	CABLE, R.F.	
X	1	RG58/U	CABLE, R.F.	

TMC PART NO TO BE IN THE FOLLOWING FORM

CA983-XX

BASIC TMC PART NO

LENGTH IN INCHES EXPRESS TO THE NEAREST INCH

JOHNSON

LIST OF MATERIAL

MATERIAL		THE TECHNICAL MATERIEL CORP. MAMARONECK, NEW YORK			
FINISH		TITLE CABLE, ASSY, R.F.			
UNLESS OTHERWISE SPECIFIED DIMENSIONS ARE IN INCHES AND INCLUDE CHEMICALLY APPLIED OR PLATED FINISHES		DRAWN	DATE	FINAL APPROVAL	DATE
		6-11-65	6-11-65	[Signature]	6/11/65
		CHECKED	DATE		
		[Signature]	6-11-65		
		ELECT. DES.	DATE		
		[Signature]	6-11-65	CA983	
		MECH. DES.	DATE		
		[Signature]	6-11-65	SHEET	
DECIMALS		FRACTIONS		REV. LTR.	
.X ± .05		± 1/64		Ø	
.XX ± .01		ANGLES			
.XXX ± .005		± 0° 30'			

SWR-10K		
Q'TY./UNIT	MODEL USED ON	ASS'Y. NO.
SCALE	CODE	

THE CONTENTS OF THIS DRAWING ARE THE EXCLUSIVE PROPERTY OF THE TECHNICAL MATERIEL CORP. ITS UNAUTHORIZED USE OR REPRODUCTION IN WHOLE OR IN PART IS STRICTLY FORBIDDEN.

NOTES