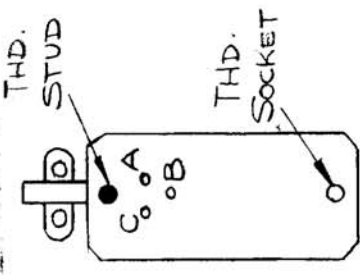


NOTE * USE ITEM 11 FOR PINS A, C, ON ITEM 4

THIS SYMBOL DENOTES END OF INSULATION AND NAIL DRIVING POINT. WIRE MUST BE STRIPPED 3/4" BEYOND THIS POINT AND TINNED 1/2" UNLESS OTHERWISE SPECIFIED.



Wires should be placed in cable in numerical sequence as they appear in item column by category.

- 1- ALL R/C CABLES
- 2- ALL SHIELDED CABLES
- 3- ALL OTHERS

REQ. ITEM	PART NO.	DESCRIPTION	SYMBOL
X 11	PX830-16-1	INSULATION, SLEEVING ELECT.	
X 10	TA 100-1	INSULATION TAPE, EL PLST	
X 9	CD 101-1MW	CORD, NYLON, LACING	
X 8	BS 100	SOLDER, TIN ALY	
1 7	SEE CHART	SLEEVING, MARKER, CABLE	
1 6	SEE CHART	SLEEVING, MARKER, CABLE	
1 5	P2033-2	SLEEVING, MARKER, CABLE	
1 4	FL247-1P	CONNECTOR, PLUG, MALE-11/C	
3	PX100-1-166	INSULATION, SLEEVING, SIZE G	
2	MWC24(7)U96	WIRE, ELEC. INSULATION	
1	MWC24(7)U94	WIRE, ELEC. INSULATION	

TYPE & TEMPER	HEAT TREAT. SPEC.	DRAWN	CHECKED	FINAL APPROVAL
		MHS	QC8	RC
FINISH & SPEC. NO.		ELEC. DES. APP. MECH. DES. APP.		
		2-26-65		CA975
				A

SYM	DESCRIPTION	DATE	CH. NO.	DRAFTS	CHECKER	ENG. APP.
A	IT. 6, 7 ADDED TO CHART ITS WAS LA107-12-122 2 LACING NOTE DELETED. IT. 1, 2, 3 LENGTHS ADDED TO CHART	6-25-65	14341	DVM	QC8	Jee
Ø	ORIGINAL RELEASE FOR PRODUCTION	2/24/65		HLA	M	
X2	ITEM 4 DETAIL ADDED. DASH NOS ADDED TO ITEMS 5, 6, 7	2-17-65		HLA	M	
X1	PIN C WAS B					

UNLESS OTHERWISE SPECIFIED DIMENSIONS ARE IN INCHES AND INCLUDE CHEMICALLY APPLIED OR PLATED FINISHES

TOLERANCES
 .XX ± .01
 .XXX ± .005

FRACTIONS
 ± 1/64
 ANGLES
 ± 0° 30'

SCALE

CODE