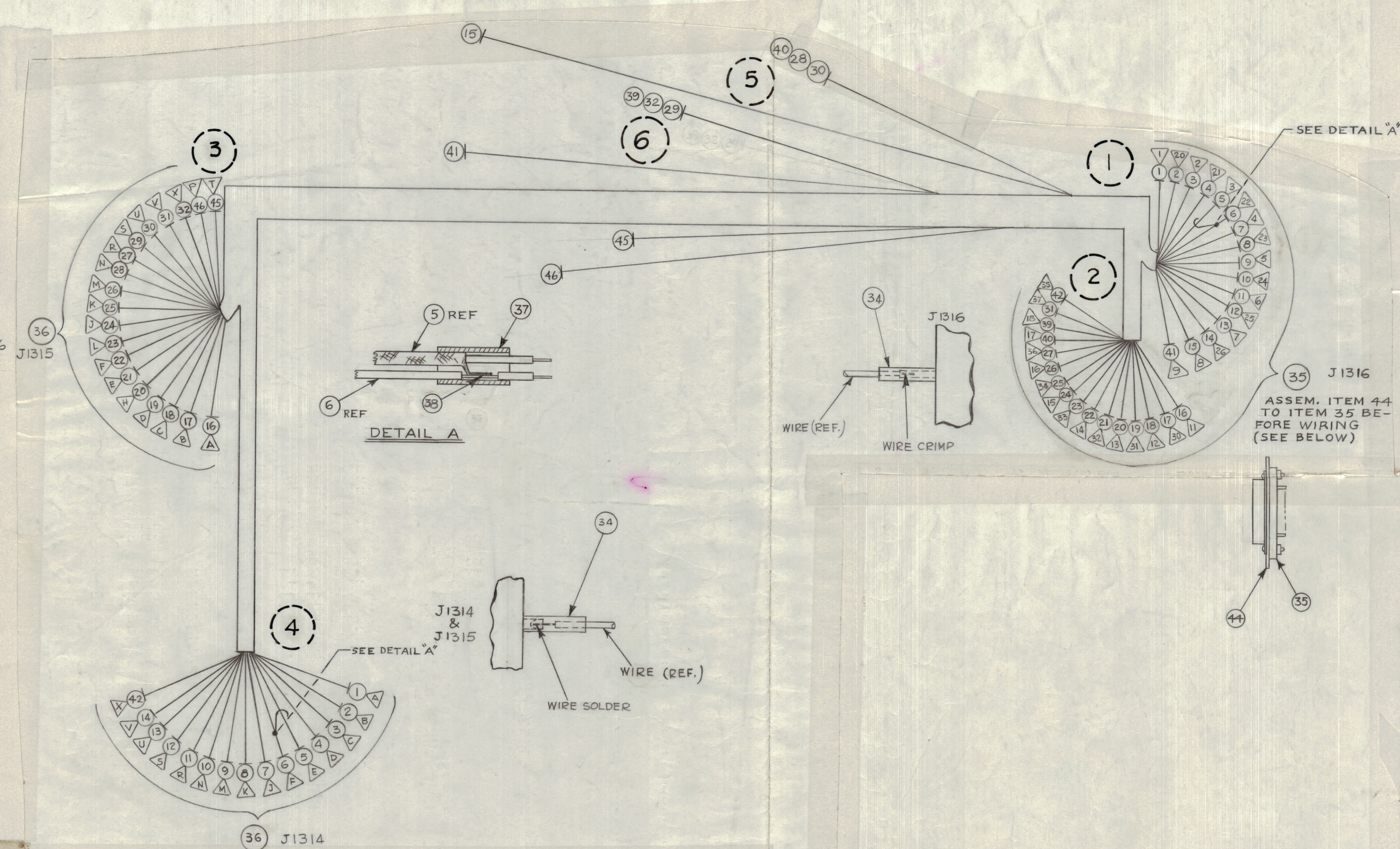


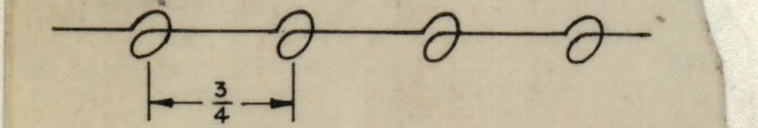
REVISIONS						
ZONE	SYM	DESCRIPTION	DATE	E.M.N. NO.	DRAFT	CHKD
X2		REDRAWN	7-10-64		N.P.	
X3		ON J1316 PINS 35,18,36 WERE 18,36,35	7-23-64		G.D.L.	
		ORIGINAL RELEASE FOR PRODUCTION	9-18-64		J.F.	
A		ON B/M IT27 WAS PIN N, IT.28 WAS PIN R. ON PICT. IT.27&28 REVERSED. ON USED P/N, MODEL WAS HFR-2	10-7-64	12563	J.F.	
S		IT. 45 & 46 ADD TO B/M & PICT.	2-10-65	13464	J.F.	



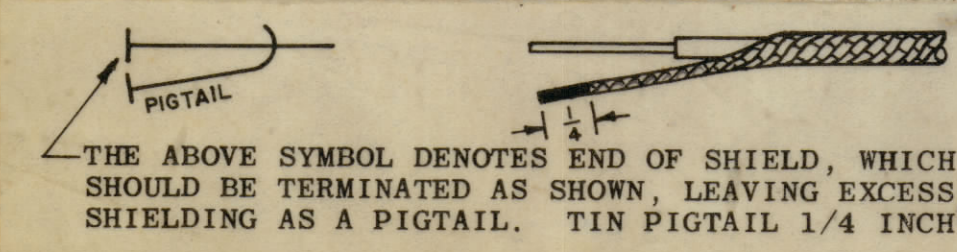
ASSEMBLE ITEM 43 TO IT 36 BEFORE WIRING (SEE DETAIL BELOW)

ASSEM. ITEM 44 TO ITEM 35 BEFORE WIRING (SEE BELOW)

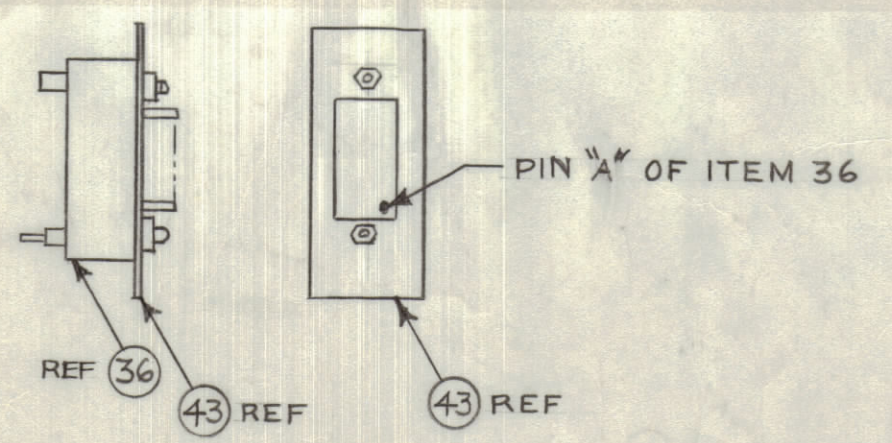
WIRES SHOULD BE PLACED IN CABLE IN NUMERICAL SEQUENCE AS THEY APPEAR IN ITEM COLUMN. SPACE LACING APPROXIMATELY 3/4" APART.



THIS SYMBOL DENOTES END OF INSULATION AND NAIL DRIVING POINT. WIRE MUST BE STRIPPED 3/4" BEYOND THIS POINT AND TINNED 1/2" UNLESS OTHERWISE SPECIFIED.



ASSEM. ITEM 43 TO ITEM 36 BEFORE WIRING (SEE BELOW)



- THIS SYMBOL DENOTES ITEM NO'S.
- ▽ THIS SYMBOL DENOTES PIN
- THIS SYMBOL DENOTES BREAKOUT POINT

FROM	TO	REQ'D.	ITEM	PART NUMBER	DESCRIPTION	SYMBOL
			46	WI-140-B22N7	A3631-LI302	J135 PIN P VIOLET
			45	WI-140-B22N97	A3631 JCT.	J135 PIN T WHT/VIOLET
			1	44	MS 3796	PLATE, ADAPTER
			2	43	MS-3797	PLATE, ADAPTER
2	4		42	WI-140-B22N 8	J1316 PIN 35	J1314 PIN X GREY
1	6		41	WI-140-B22N 900	J1316 PIN 9	GND CHASSIS WHT-BLK-BLK
2	5		40	WI-140-B22N 874	J1316 PIN 17	A3611 COM JCT GREY-VIO-YEL.
2	6		39	MWC20 (7) U98	J1316 PIN 18	A3631 COM JCT WHT-GREY
		X	38	BS-100		SOLDER, SOFT
		X	37	PX-830-14-1		SLEEVING, INSULATION BLACK
		2	36	JJ-242-6-S		CONNECTOR RECEPTACLE J1314, J1315
		1	35	JJ-313-3		CONNECTOR RECEPTACLE J1316
		X	34	PX-830-18-1		SLEEVING, INSULATION BLACK
		X	33	CD-101-1MW		CORD LACING
6	3		32	MWC20 (7) U98	A3631 COM JCT	J1315 PIN X WHT-GREY
2	3		31	MWC-20 (7) U90	J1316 PIN 37	▲ PIN V WHT-BLACK
5	3		30	WI-140-B22N 874	A3631 COM JCT	▲ PIN U GREY-VIO-YEL
6	3		29	MWC20 (7) U98	A3631 COM JCT	PIN S WHT-GREY
5	3		28	WI-140-B22N 874	A3631 COM JCT	PIN N GREY-VIO-YEL
2	3		27	▲ 873	J1316 PIN 36	PIN R GREY-VIO-ORN
2	3		26	94	▲ PIN 16	PIN M WHT-YEL
2	3		25	946	PIN 34	PIN K WHT-YEL-BLU
2	3		24	966	PIN 15	PIN J WHT-BLU-BLU
2	3		23	965	PIN 33	PIN L WHT-BLU-GRN
2	3		22	964	PIN 14	PIN F WHT-BLU-YEL
2	3		21	963	PIN 32	PIN E WHT-BLU-ORN
2	3		20	926	PIN 13	PIN H WHT-RED-BLU
2	3		19	925	PIN 31	PIN D WHT-RED-GRN
2	3		18	924	PIN 12	PIN C WHT-RED-YEL
2	3		17	923	PIN 30	▼ PIN B WHT-RED-ORN
2	3		16	944	PIN 11	J1315 PIN A WHT-YEL-YEL
1	5		15	7	PIN 8	LI309 VIOLET
1	4		14	945	PIN 26	J1314 PIN V WHT-YEL-GRN
1	4		13	935	PIN 7	▲ PIN U WHT-ORN-GRN
1	4		12	943	PIN 25	PIN S WHT-YEL-ORN
1	4		11	933	PIN 6	PIN R WHT-ORN-ORN
1	4		10	0	PIN 24	PIN N BLACK
1	4		9	2	PIN 5	PIN M RED
1	4		8	856	PIN 23	PIN K GRY-GRN-BLU
1	4		7	855	PIN 4	PIN J GREY-GRN-GRN
1	4		6	WI-140-B22N 854	PIN 22	PIN F GREY-GRN-YEL
1	4		5	MWC22 (7) S39	PIN 3	PIN E WHITE
1	4		4	WI-140-B22N 846	PIN 21	PIN D GREY-YEL-BLU
1	4		3	845	PIN 2	PIN C GREY-YEL-GRN
1	4		2	844	▼ PIN 20	▼ PIN B GREY-YEL-YEL
1	4		1	WI-140-B22N 843	J1316 PIN 1	J1314 PIN A GREY-YEL-ORN

BREAKOUT POINTS		J. ANGER		LIST OF MATERIAL	
REQ'D.	ITEM	PART NUMBER	DESCRIPTION	SYMBOL	

1	HFR-2	
SCALE	1:1	CODE
	A	

UNLESS OTHERWISE SPECIFIED DIMENSIONS ARE IN INCHES AND INCLUDE CHEMICALLY APPLIED OR PLATED FINISHES		DRAWN	DATE	FINAL APPROVAL	DATE
DECIMALS	± .01	1/16	± .005	ANGLES	± 0° 30'
FRACTIONS	± 1/64				
MECH. DES.					

NOTES

THE TECHNICAL MATERIEL CORP. MAMARONECK, NEW YORK
WIRING HARNESS, BRANCHED

CA 892