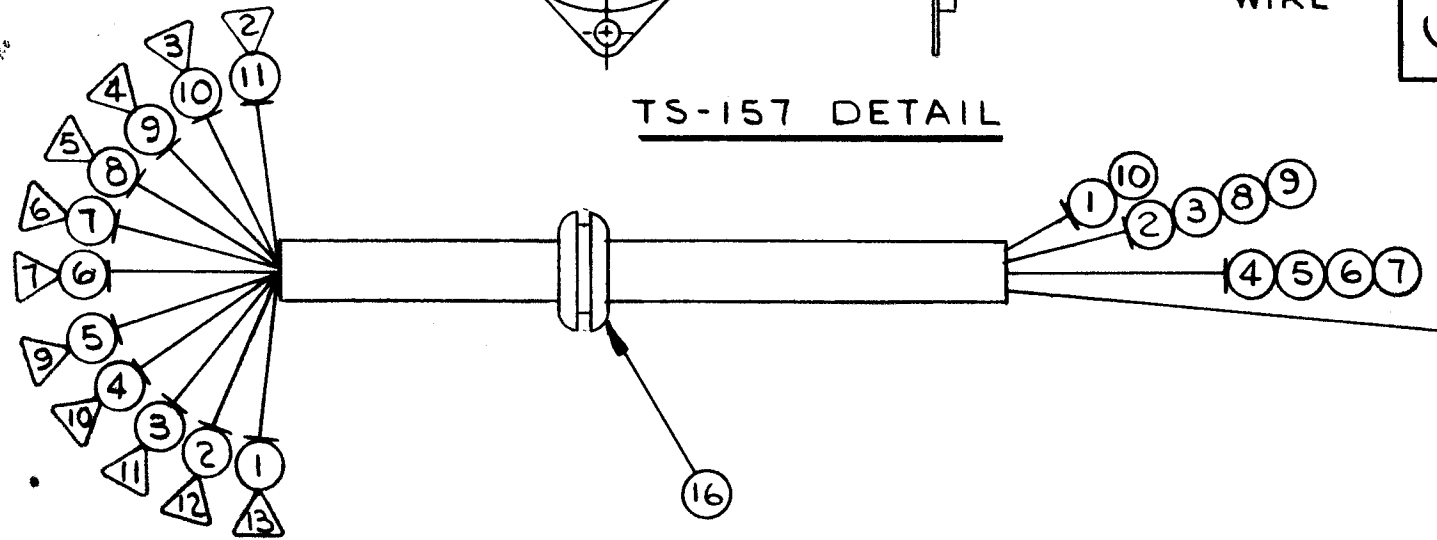
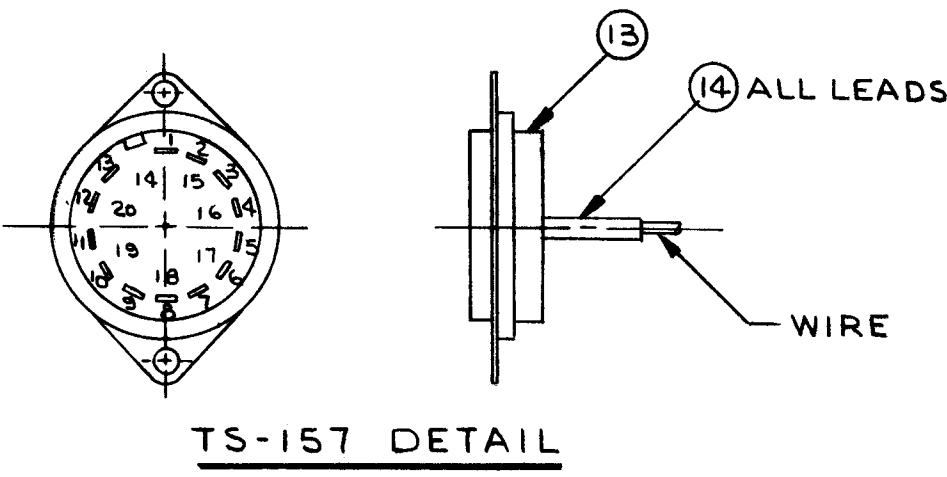


CA 877 0	REVISIONS					
	SYM	DESCRIPTION	DATE	E.M.N. NO.	DRAFT	CHKD
0	ORIGINAL RELEASE FOR PRODUCTION	7-29-64	-	SRG		



**SYMBOLS**

- DENOTES ITEM NUMBERS.
- △ DENOTES PIN NUMBERS.

THIS SYMBOL DENOTES END OF INSULATION AND NAIL DRIVING POINT. WIRE MUST BE STRIPPED 3/4" BEYOND THIS POINT AND TINNED 1/2" UNLESS OTHERWISE SPECIFIED.

WIRES SHOULD BE PLACED IN CABLE IN NUMERICAL SEQUENCE AS THEY APPEAR IN ITEM COLUMN. SPACE LACING APPROXIMATELY 3/4" APART.

1	16	EY 102-4	GROMMET, RUBBER		
X	15	BS 100	SOLDER, SOFT		
6 7/8	14	PX 100-1-.085	SLEEVING, INSULATION		
1	13	TS 157	SOCKET, TUBE, DIGITAL READOUT		XDS351
X	12	CD 101-1-MW	CORD, LACING		
11 3/4	11	MWC24 (7)U92	XDS351 PIN 2	A-3307 TERMINAL #7	
5	10	U10	3	\$351-A TERMINAL 0	
5 1/4	9	U9	4	9	
5 1/4	8	U8	5	8	
5 3/4	7	U7	6	7	
5 3/4	6	U6	7	6	
5 3/4	5	U5	9	5	
5 3/4	4	U4	10	4	
5 1/4	3	U3	11	3	
5 1/4	2	U2	12	2	
1	1	MWC24 (7)U1	XDS351 PIN-13	\$351-A TERMINAL	

**M. GELLMAN LIST OF MATERIAL**

**THE TECHNICAL MATERIEL CORP.**  
MAMARONECK, NEW YORK

**FINISH** \_\_\_\_\_

**TITLE** WIRING HARNESS (SPECTRUM FILTER)

**UNLESS OTHERWISE SPECIFIED DIMENSIONS ARE IN INCHES AND INCLUDE CHEMICALLY APPLIED OR PLATED FINISHES**

DECIMALS .X ± .05 .XX ± .01 .XXX ± .005	TOLERANCES	FRACTIONS ± 1/64 ANGLES ± 0° 30'
--	------------	---

DRAWN J. LESHINSKI	DATE 3/5/64	FINAL APPROVAL <i>[Signature]</i>	DATE
CHECKED <i>[Signature]</i>	DATE 7-29-64		
ELECT. DES. <i>[Signature]</i>	DATE 7-29-64		
MECH. DES. <i>[Signature]</i>	DATE		

CA 877 0

SHEET \_\_\_\_\_ REV. LTR. \_\_\_\_\_

LFS-1		ASS'Y. NO.
Q'TY./UNIT	MODEL USED ON	
SCALE 1:1	CODE ▲	
THE CONTENTS OF THIS DRAWING ARE THE EXCLUSIVE PROPERTY OF THE TECHNICAL MATERIEL CORP. ITS UNAUTHORIZED USE OR REPRODUCTION IN WHOLE OR IN PART IS STRICTLY FORBIDDEN.		

**NOTES**