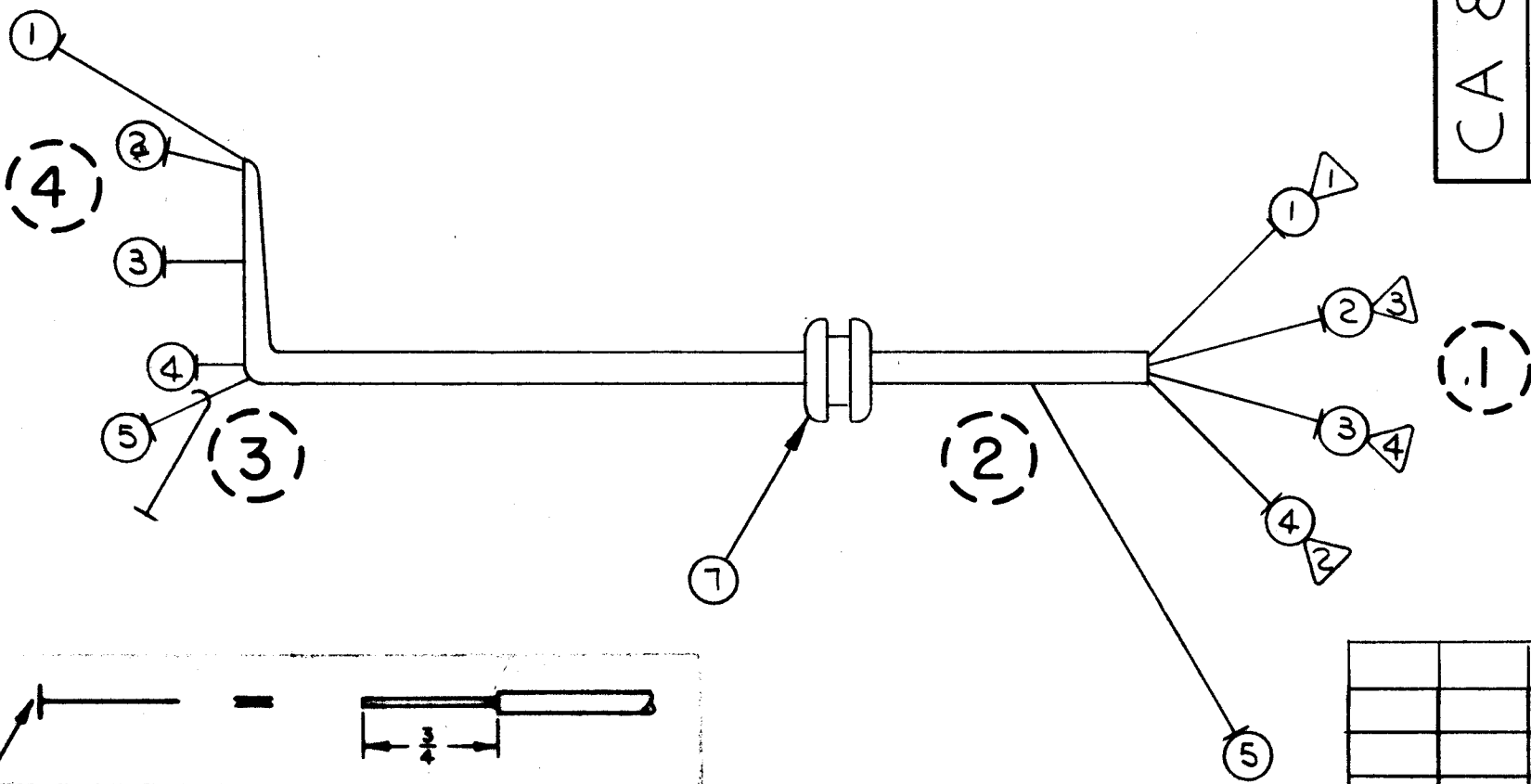


CA 876 0	REVISIONS					
	SYM	DESCRIPTION	DATE	E.M.N. NO.	DRAFT	CHKD
0	ORIGINAL RELEASE FOR PRODUCTION	7-29-64	-	SRG		



SYMBOLS

○ DENOTES ITEM NUMBERS.

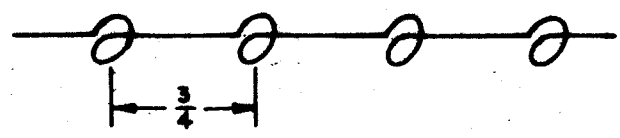
△ DENOTES PIN NUMBERS.

○ DENOTES BREAKOUT POINTS.

THIS SYMBOL DENOTES END OF INSULATION AND NAIL DRIVING POINT. WIRE MUST BE STRIPPED 3/4" BEYOND THIS POINT AND TINNED 1/2" UNLESS OTHERWISE SPECIFIED.

THE ABOVE SYMBOL DENOTES END OF SHIELD, WHICH SHOULD BE TERMINATED AS SHOWN, LEAVING EXCESS SHIELDING AS A PIGTAIL. TIN PIGTAIL 1/4 INCH.

WIRES SHOULD BE PLACED IN CABLE IN NUMERICAL SEQUENCE AS THEY APPEAR IN ITEM COLUMN. SPACE LACING APPROXIMATELY 3/4" APART.



NOTES

FROM	TO	REQ'D.	ITEM	PART NUMBER	DESCRIPTION	TO	SYMBOL
			11	BS 100	SOLDER, SOFT		
		1	10	PX830-8-1	INSULATION SLEEVING, ELECT.		
		1	9	PL 241-1	CONNECTOR, MICRO-MINIATURE		P353
		1	8	PL 204	CONNECTOR, PLUG, MINIATURE		P354
		1	7	EY 102-16	GROMMET, RUBBER		
		X	6	CD 101-1-MW	CORD, LACING		
2	3	9 3/8	5	RG 174/U	P354	A-3307 TERMINAL #3 SHIELD TO TERMINAL #1	
1	3	8 1/4	4	MWC24 (7) U0	P353 PIN-2	A-3307 TERMINAL #2	
1	4	9 1/8	3	U2	PIN-4		
1	4	9 5/8	2	U92	PIN-3		
1	4	10 1/8	1	MWC24 (7) U6	P353 PIN-1	A-3307 TERMINAL #1	

BREAKOUT POINTS	GELLMAN	LIST OF MATERIAL	
		THE TECHNICAL MATERIEL CORP. MAMARONECK, NEW YORK	
		TITLE WIRING HARNESS, BRANCHED (SPECTRUM FILTER)	
		DRAWN J. LESHINSKI	DATE 3/4/64
		CHECKED @	DATE 7-29-64
		ELECT. DES. [Signature]	DATE 7-29-64
		MECH. DES. [Signature]	DATE 7-29-64
		CA 876 0	
		SHEET	
		REV. LTR.	

LFS-1		ASS'Y. NO.
Q'TY./UNIT	MODEL USED ON	ASS'Y. NO.
SCALE 1:1	CODE A	
THE CONTENTS OF THIS DRAWING ARE THE EXCLUSIVE PROPERTY OF THE TECHNICAL MATERIEL CORP. ITS UNAUTHORIZED USE OR REPRODUCTION IN WHOLE OR IN PART IS STRICTLY FORBIDDEN.		

DECIMALS .X ± .05 .XX ± .01 .XXX ± .005	TOLERANCES	FRACTIONS ± 1/64 ANGLES ± 0° 30'
--	------------	---