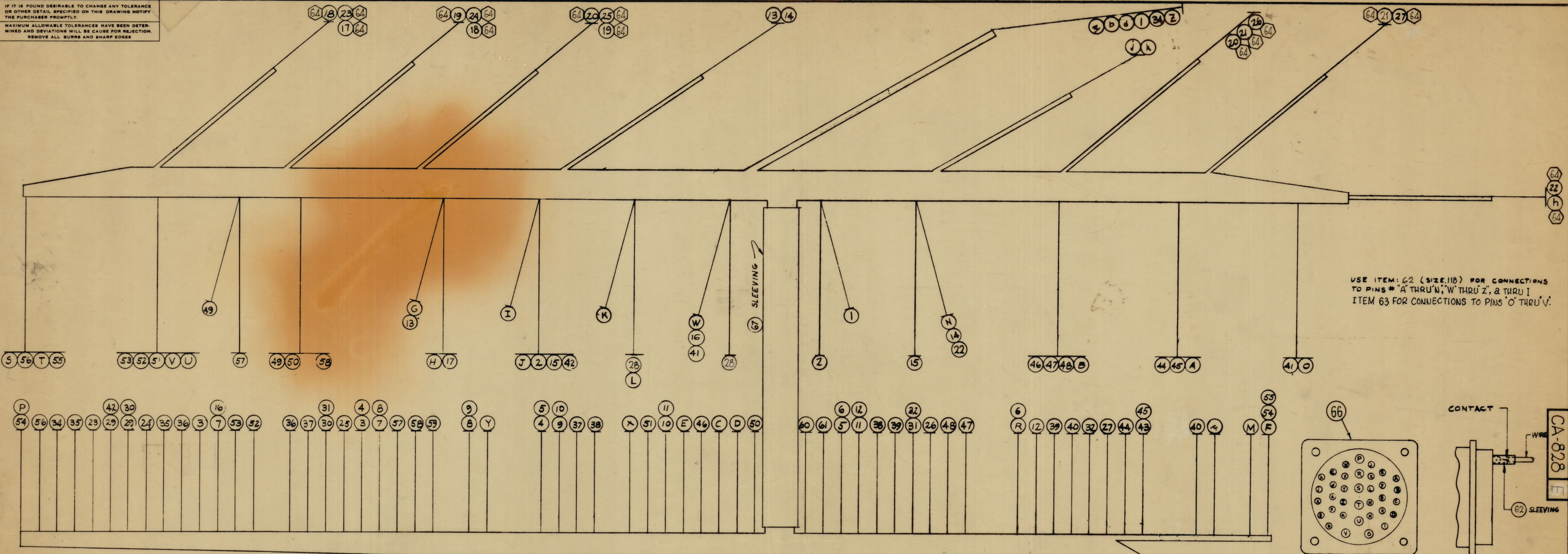
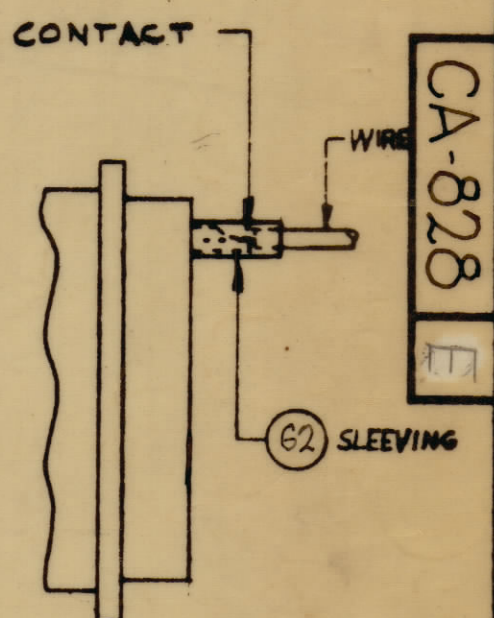
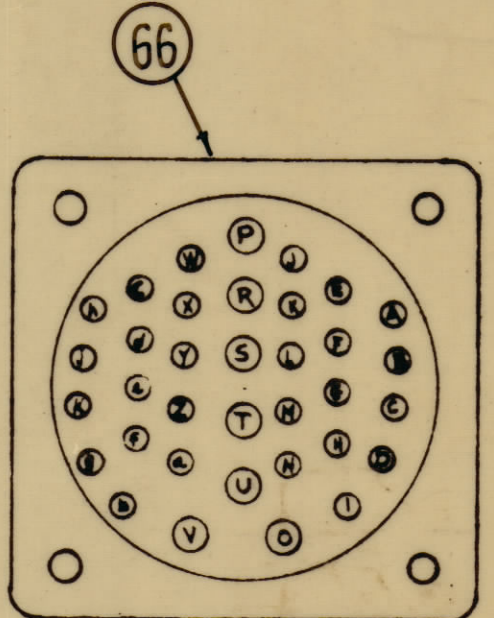


IF IT IS FOUND DESIRABLE TO CHANGE ANY TOLERANCE OR OTHER DETAIL SPECIFIED ON THIS DRAWING NOTIFY THE PURCHASER PROMPTLY.
 MAXIMUM ALLOWABLE TOLERANCES HAVE BEEN DETERMINED AND DEVIATIONS WILL BE CAUSE FOR REJECTION. REMOVE ALL BURRS AND SHARP EDGES.

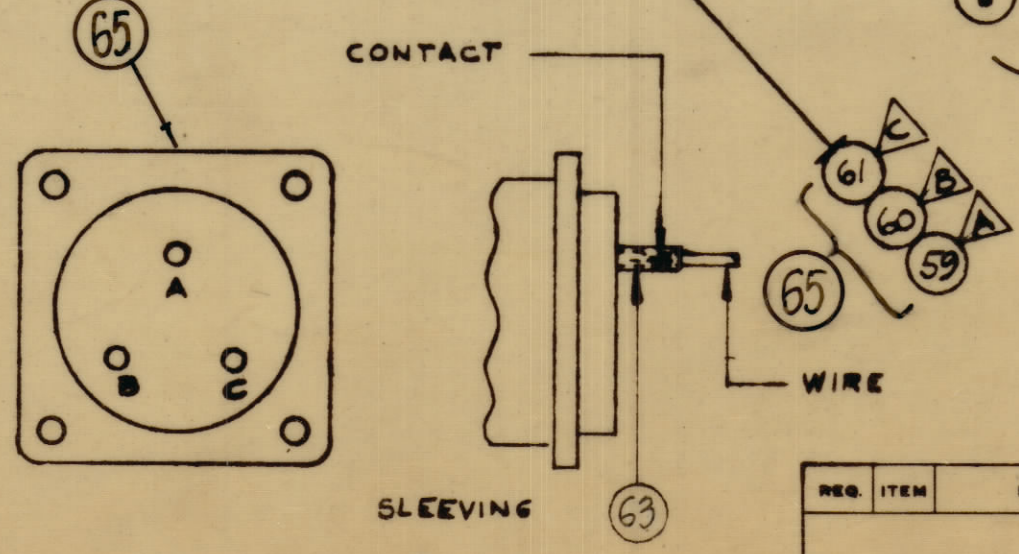
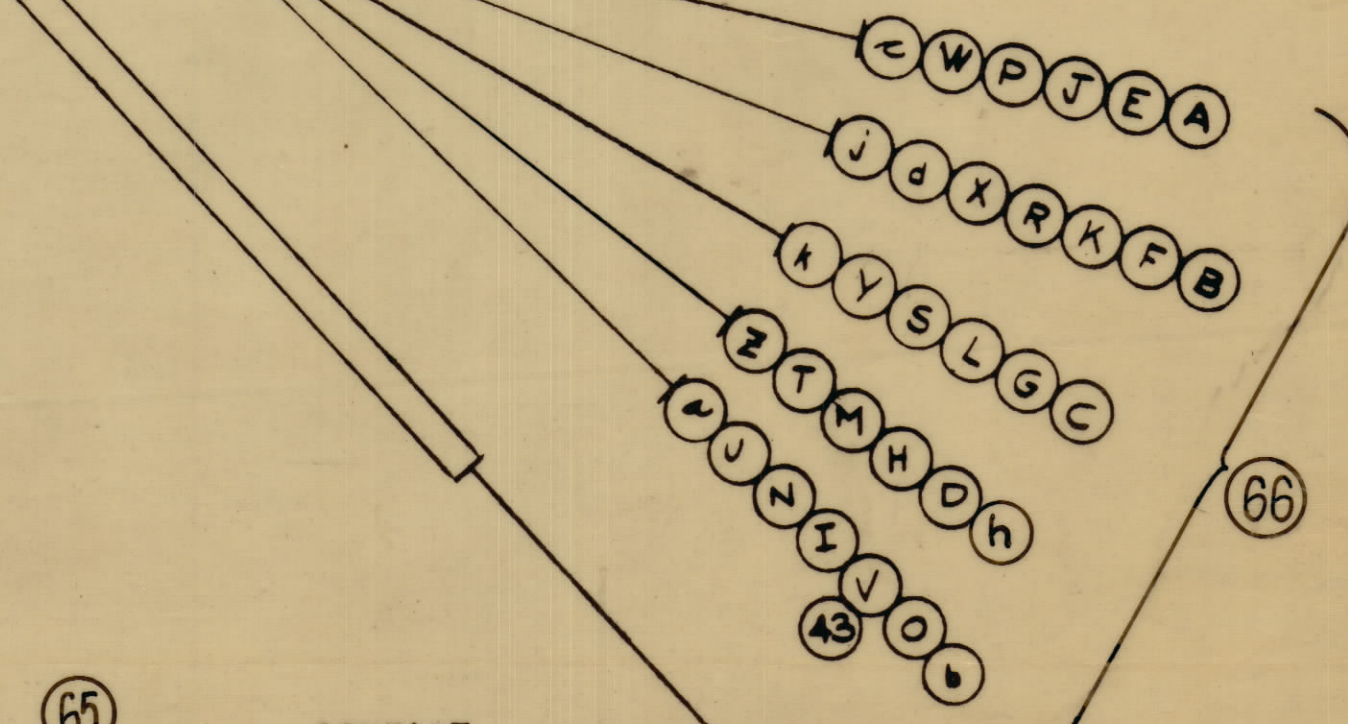


USE ITEM: 62 (SIZE .118) FOR CONNECTIONS TO PINS * 'A' THRU 'N', 'W' THRU 'Z', & THRU I
 ITEM 63 FOR CONNECTIONS TO PINS 'O' THRU 'V'.



h	MNC 20(7)U 92	WH/RED
28 1/2	k MNC 22(7)U 0	BLACK
28 1/2	j 22(7)U 2	RED
31 1/4	d 22(7)U 1	BROWN
11 1/4	c 22(7)U 9 6	W/BROWN
31 1/4	b 22(7)U 9 1	W/BROWN
31 1/4	a 22(7)U 5	GREEN
31 1/4	z 22(7)U 9	WHITE
22 1/2	Y 22(7)U 4	YELLOW
19 1/4	X 20(7)U 7	VIOLET
24 1/2	W 16(19)U 6	BLUE
37	V 18(16)U 1	BROWN
37	U 20(7)U 3	ORANGE
39 1/2	T 22(7)U 9 3	W/ORANGE
42 1/4	S 22(7)U 9 4	W/YELLOW
11	R 16(19)U 9 7	W/PURPLE
32	P 22(7)U 0	BLACK
34 1/2	O 22(7)U 9 8	W/GREY
25 1/2	N 18(16)U 5	GREEN
12	M 22(7)U 3	ORANGE
27 1/4	L 16(19)U 8	GRAY
26 1/4	K 16(19)U 9 8	W/GRAY
29	J 18(16)U 7	PURPLE
28	I 18(16)U 4	YELLOW
21 1/4	H 18(16)U 9	WHITE
30	G 18(16)U 9 0	W/BLACK
12 1/4	F 22(7)U 0	BLACK
18	E 18(16)U 7 7	W/PURPLE
17 1/4	D 18(16)U 9 5	W/GREEN
19	C 18(16)U 9 2	W/RED
29 1/2	B 18(16)U 8	GREY
32 1/2	A MNC 22(7)U 6	BLUE

64	16	TE-120-2	LUG, TERMINAL, SPADE TYPE	32	10 1/2	MNC 22(7)U 9 4	W/YELLOW
63	X	PX-100-1-148	SLEEVING, INSULATION	31	10 3/4		
62	X	PX-100-1-118	SLEEVING, INSULATION	30	10 3/4		
61	11 1/2	MNC 18(16)U 9		29	6 3/4	22(7)U 9 4	W/YELLOW
60	17 1/2	MNC 18(16)U 4		28	11 1/2		GREY
59	25	MNC 18(16)U 2		27	3 1/2		YELLOW
58	32 1/2	MNC 18(16)U 4		26	25 1/2		
57	35	MNC 18(16)U 2		25	32 1/2		
56	4 1/4	MNC 20(7)U 9 4		24	4 1/2		
55	40 1/2	20(7)U 0		23	8 1/2	22(7)U 4	YELLOW
54	32 1/2	20(7)U 0		22	40	22(7)U 5	GREEN
53	39	18(16)U 3		21	15 1/2	22(7)U 8	GREY
52	31	18(16)U 1		20	25 1/2		
51	30 1/2	MNC 18(16)U 1		19	14 1/2		
50	25 1/2	MNC 18(16)U 4		18	11 1/2	22(7)U 8	GREY
49	9 1/4	MNC 18(16)U 2		17	16	18(16)U 9	WHITE
48	24	MNC 22(7)U 9 2		16	27	22(7)U 6	BLUE
47	23 1/2	22(7)U 8		15	14 1/2	18(16)U 7	PURPLE
46	21 1/4	20(7)U 2		14	18	22(7)U 5	GREEN
45	29 1/2	20(7)U 1		13	12 1/2		W/GREEN
44	30	20(7)U 6		12	10 1/2		WHITE
43	9 1/2	20(7)U 1		11	10 1/2		
42	33 1/2	20(7)U 7		10	8 1/2		
41	20 3/4	18(16)U 6		9	9 1/2		
40	9	20(7)U 1		8	8 1/2		
39	9 1/4			7	10 1/4		WHITE
38	12 1/2			6	10		W/PURPLE
37	12			5	12 1/2		W/PURPLE
36	9			4	10 1/2		W/PURPLE
35	8 1/2			3	9 3/4		W/PURPLE
34	3 1/4	20(7)U 1		2	14 1/2		PURPLE
33		DELETED		1	16 1/4	MNC 22(7)U 9 0	W/BLACK



USE ITEM: 63 (SIZE .148) FOR CONNECTIONS TO PINS * A, B, C

69	X	BS100	SOLDER, TIN ALLOY
68	X	CD-101-MW	LACING
67	6 3/4	PX-100-1-628	SLEEVING 5/8 BLACK
66	1	NS-3102A32-TP	CONNECTOR
65	1	MS-3102A22-90	CONNECTOR

E	11.65 ADDED	1/24/64	1/27/64	RME	1/27/64
D	11.33 DELETED	4-18-64	1810		
C	CLEARING CHANGE	8/4/65	CC	DNV	1/27/64
B	11.19, 20, 21 CLAMPED	7-14-64	2	SRG	1/27/64
A	ITEM h ADDED	5/4/64	1	A.M.	1/27/64
O	ORIGINAL RELEASE FOR PRODUCTION	5/4/64	0	A.M.	1/27/64
29 1/2	B				
32 1/2	A				

ALL OTHERS	DEC DIM ±	DRILL PUNCH COMMERCIAL STOCK
	FRACTIONAL DIM ±	SIZES AND MANUFACTURERS
	ANGULAR DIM ±	TOLERANCES ARE NOT INCLUDED.

REQ. ITEM	PART NO.	F. BUDETTI	DESCRIPTION	SYMBOL
THE TECHNICAL MATERIEL CORP.				
MAMARONECK, NEW YORK				
STOCK SIZE	WIRING HARNESS, BRANCHED RELAY PANEL			
MATERIAL	WEIGHT PER PC	DRAWN: [Signature] ELEC. DES. APP. [Signature] MECH. DES. APP. [Signature]		
TYPE & TEMPER	CHECKED: [Signature] FINAL APPROVAL: [Signature]			
HEAT TREAT SPEC.	DATE: 1-5-64			
FINISH & SPEC. NO.	USED ON: GPT-40K(1)4, GPF-10K(1)T(A)(1)3			

CA-828