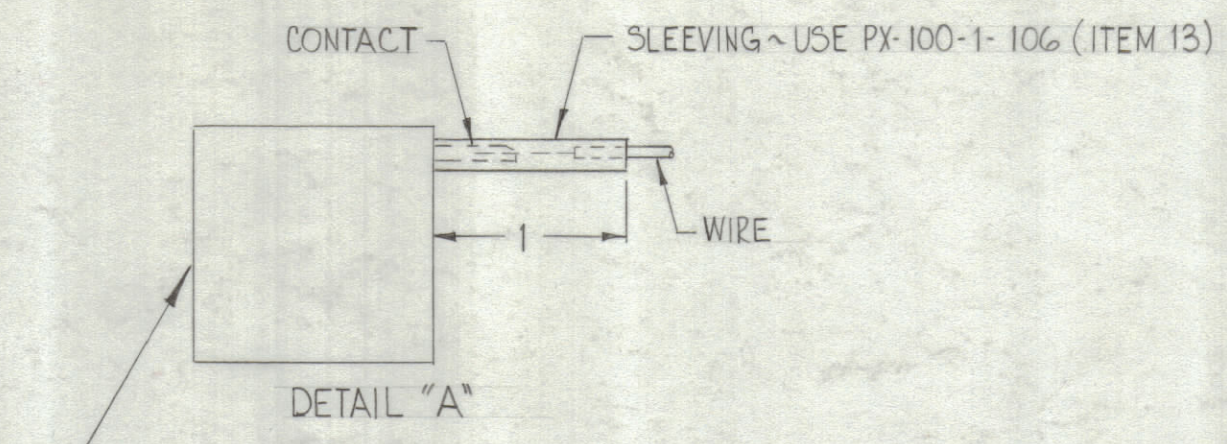
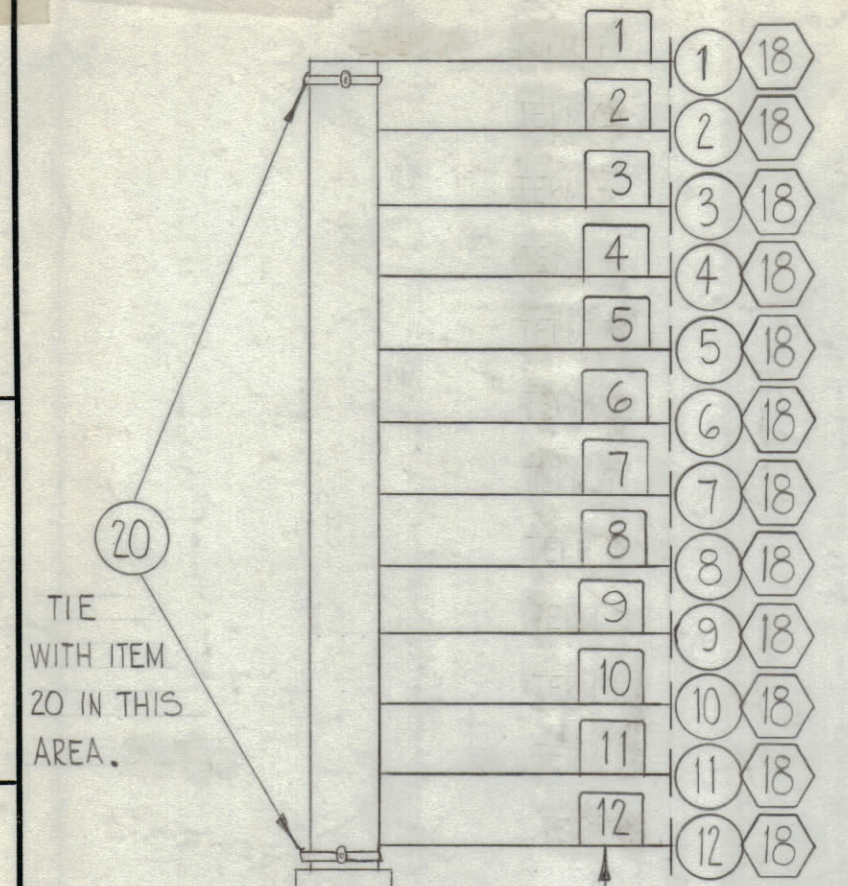


THIS SYMBOL DENOTES END OF INSULATION AND NAIL DRIVING POINT. WIRE MUST BE STRIPPED 3/4" BEYOND THIS POINT AND TINNED 1/2" UNLESS OTHERWISE SPECIFIED.

Wires should be placed in cable in numerical sequence as they appear in item column. Space lacing approximately 3/4" apart.

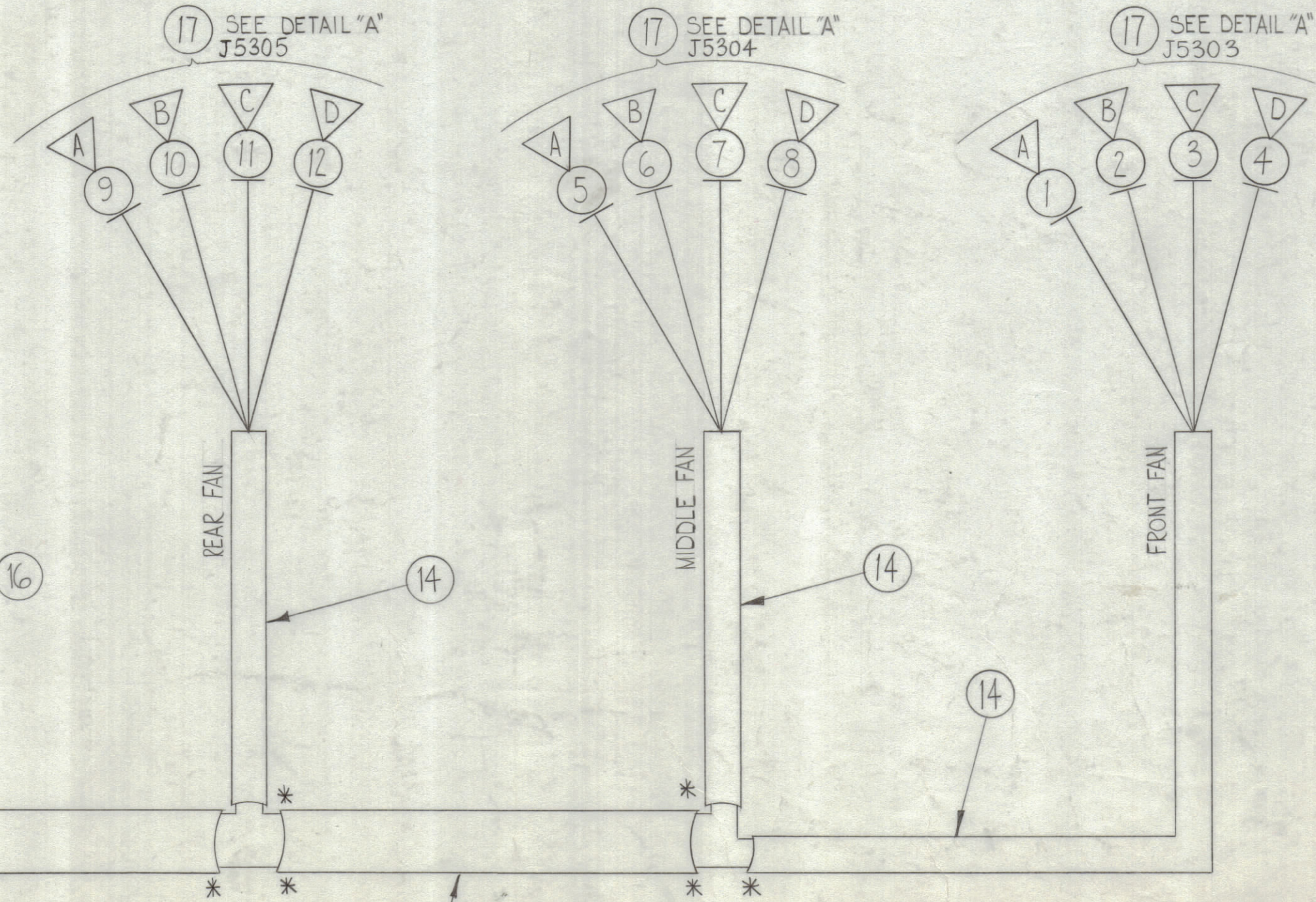
REVISIONS					
ZONE	SYM	DESCRIPTION	DATE	E.M.N. NO.	DRAFT
	A	REDRAWN & REVISED			
	O	ORIGINAL RELEASE FOR PRODUCTION	5-18-64		SRG



TIE WITH ITEM 20 IN THIS AREA.

TYP.

- ~SYMBOL DENOTES~
- ITEM NOS.
 - ⬡ LUGS
 - △ PINS
 - TAGS



REQ'D.	ITEM	PART NUMBER	DESCRIPTION	SYMBOL
	21	LA-101-1 THRU 12	WIRE MARKER	
	20	CD-101-1-MW	CORD LACING	BLACK
	19	BS-100	SOLDER, SOFT	
12	18	TE-120-2	LUG, SPADE	
3	17	M53102A14S-25	CONNECTOR, PLUG	
	16	PX-100-1-625	SLEEVING, INSULATION	BLACK
	15	↑ -500	↑	BLACK
	14	↑ -263	↑	BLACK
	13	PX-100-1-106	SLEEVING, INSULATION	BLACK
	12	MWC 20(7)B9	CABLE, INSULATED FIBERGLASS	WHITE
	11	↑ 8	↑	GRAY
	10	↑ 7	↑	VIOLET
	9	↑ 6	↑	BLUE
	8	↑ 5	↑	GREEN
	7	↑ 94	↑	WH/YEL
	6	↑ 4	↑	YELLOW
	5	↑ 3	↑	ORANGE
	4	↑ 92	↑	WH/RED
	3	↑ 2	↑	RED
	2	↑ 1	↑	BROWN
	1	MWC 20(7)B0	CABLE, INSULATED FIBERGLASS	BLACK

F. BUDETTI		LIST OF MATERIAL	
MATERIAL		THE TECHNICAL MATERIEL CORP. MAMARONECK, NEW YORK	
FINISH		TITLE CABLE ASSY. PA FANS INTERCONNECT	
UNLESS OTHERWISE SPECIFIED, DIMENSIONS ARE IN INCHES AND INCLUDE CHEMICALLY APPLIED OR PLATED FINISHES	DRAWN W.A. FRANCO	DATE 3-24-63	FINAL APPROVAL RAC
DECIMALS .X ± .05 .XX ± .01 .XXX ± .005	CHECKED aa	DATE	DATE
FRACTIONS ± 1/64 ANGLES ± 0° 30'	ELECT. DES. 8203	DATE 5/1/64	CA-822
NOTES	MECH. DES. 820	DATE 2-14-64	SHEET
			REV. LTR. 0

* ~ TIE WITH ITEM 20.

QTY./UNIT	MODEL USED ON	ASS'Y. NO.
1	GPT-200K	AX-395
SCALE	CODE	

NOTES

THE CONTENTS OF THIS DRAWING ARE THE EXCLUSIVE PROPERTY OF THE TECHNICAL MATERIEL CORP. ITS UNAUTHORIZED USE OR REPRODUCTION IN WHOLE OR IN PART IS STRICTLY FORBIDDEN.