

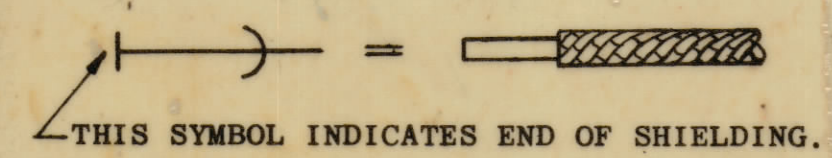
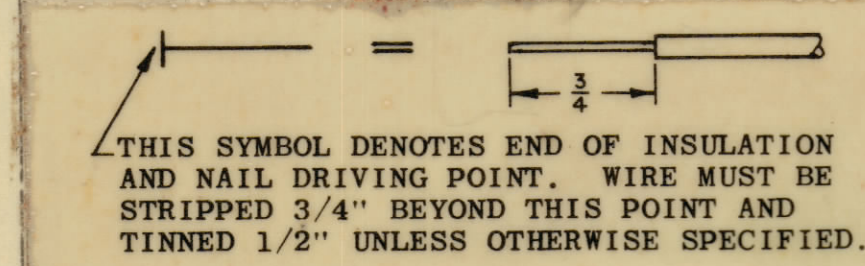
IF IT IS FOUND DESIRABLE TO CHANGE ANY TOLERANCE OR OTHER DETAIL SPECIFIED ON THIS DRAWING NOTIFY THE PURCHASER PROMPTLY.

MAXIMUM ALLOWABLE TOLERANCES HAVE BEEN DETERMINED AND DEVIATIONS WILL BE CAUSE FOR REJECTION. REMOVE ALL BURRS AND SHARP EDGES.

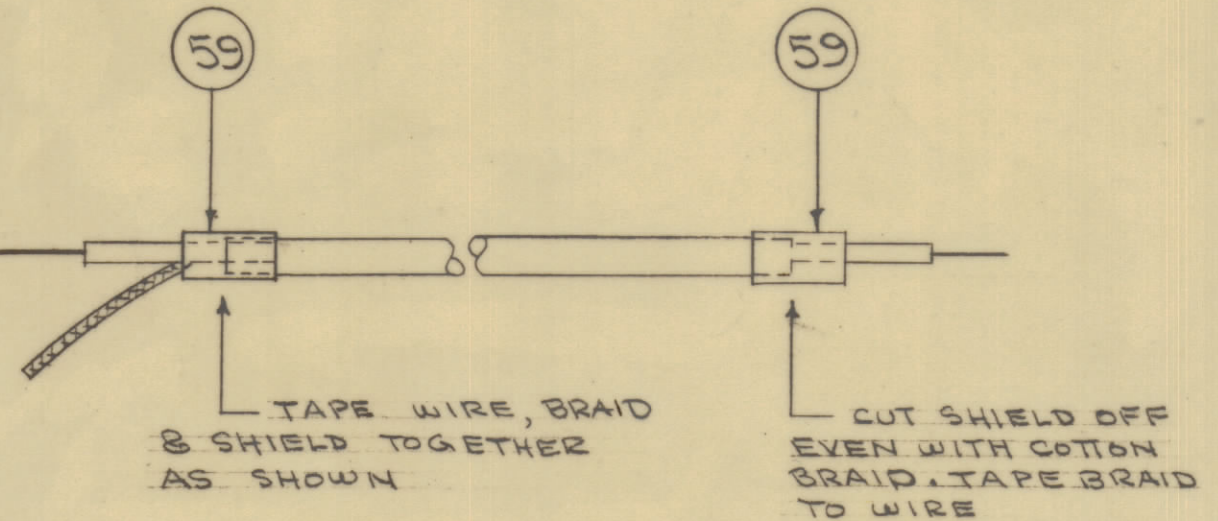
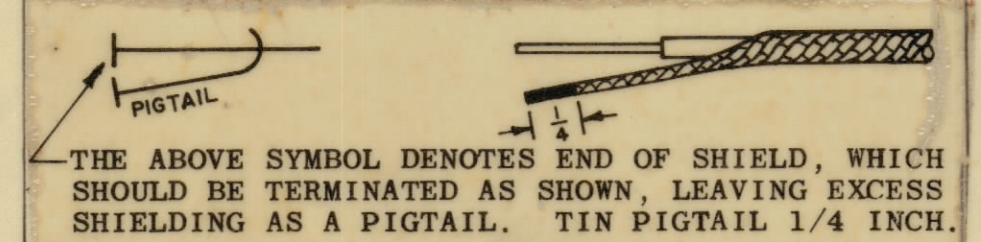
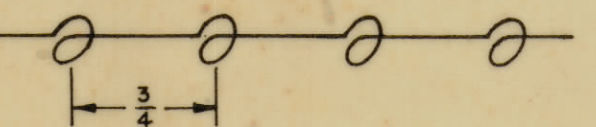
NOTICE TO PERSONS RECEIVING THIS DRAWING

THE TECHNICAL MATERIEL CORPORATION claims proprietary right in the material disclosed herein. This drawing is issued in confidence or containing information only and may not be reproduced or used to manufacture any kind of item without permission from THE TECHNICAL MATERIEL CORPORATION to the user. This drawing is loaned for mutual assistance and is subject to recall at any time.

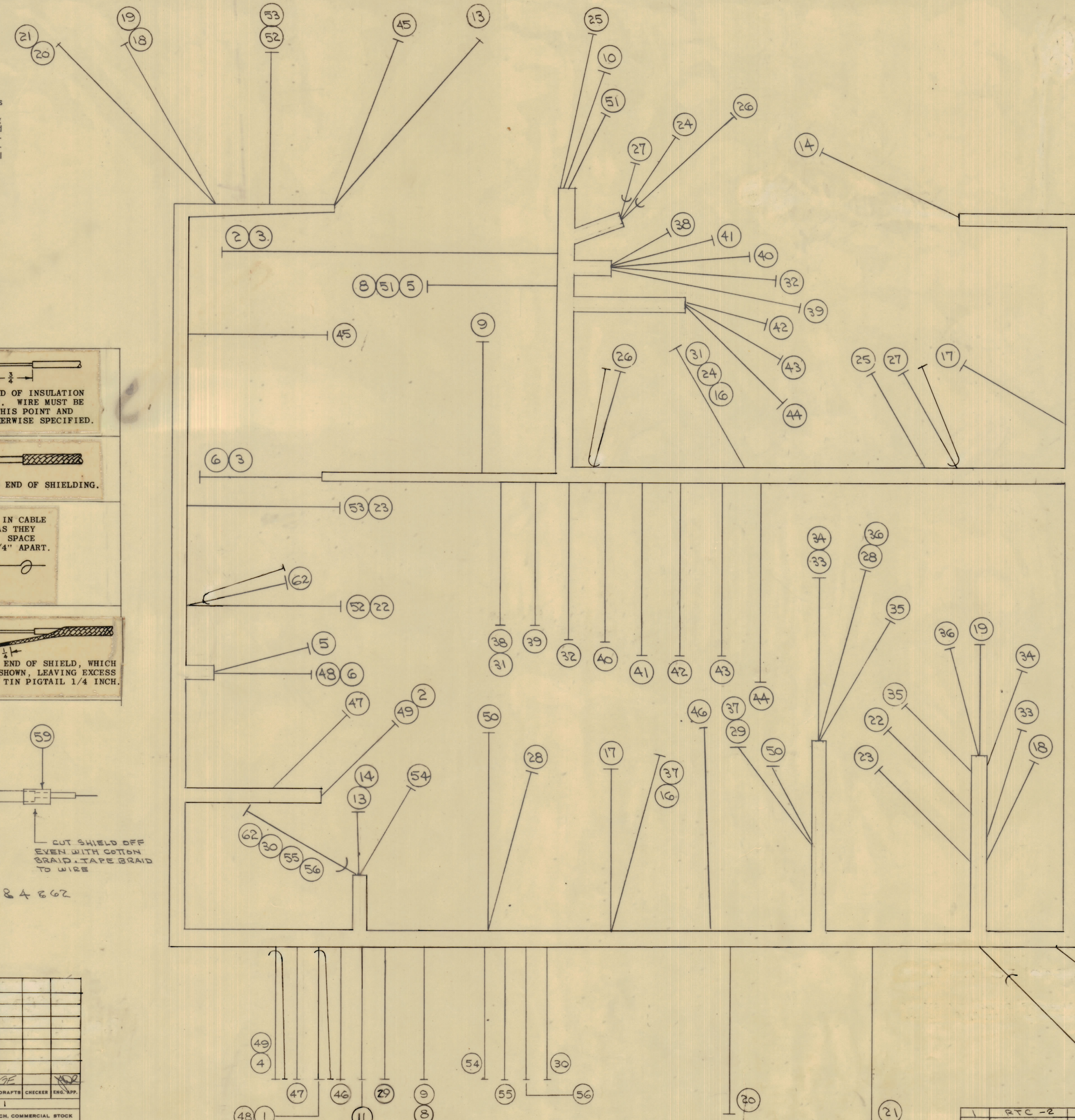
Property of:
THE TECHNICAL MATERIEL CORPORATION
 MAMARONECK, NEW YORK



WIRES SHOULD BE PLACED IN CABLE IN NUMERICAL SEQUENCE AS THEY APPEAR IN ITEM COLUMN. SPACE LACING APPROXIMATELY 3/4\"/>



DETAIL - ITEMS 1 & 4 & 62



REG. ITEM	PART NO.	DESCRIPTION	COLOR SYMBOL
	WI-101-2	WIRE, SHIELD, C.C.	
X 59	TA-103-3	TAPE	
X 58	85-100	SOLDER, SOFT	
X 57	CD-101-1HW	LACING, CORD	
6 5/8	MWC 22(7)U3	WIRE, INSULATED	ORANGE
10 3/4	MWC 22(7)U96		WHY/BLUE
9 1/2		PINK	PINK
1 1/4	1'		BROWN
1 1/6	52	91	WHY/BRN
7 1/2	51	5	GREEN
1 1/4	50	6	BLUE
1 3/8	49	90	WHY/BLK
1 1/4	48	4	YEL
1 3/4	47	94	WHY/YEL
1 1/4	46	0	BLACK
1 2/4	45	0	"
1 1/6	44	4	YEL
1 1/4	43	94	WHY/YEL
1 3/8	42	3	OR.
1 3/8	41	90	WHY/BLK
1 2/2	40	7	VIOLET
1 2/4	39	93	WHY/GR.
1 1	38	2	RED
1 2/4	37	2	"
1 1/6	36	92	WHY/RED
1 1/4	35	4	YEL
1 5/8	34	PINK	PINK
1 5/8	33	96	WHY/BLUE

REG. ITEM	PART NO.	DESCRIPTION	COLOR SYMBOL
12	32	MWC 22(7)U92	WIRE, INSULATED
1 1/4	31	U2	RED
1 1/2	30	U8	GRAY
1 3	29	U2	RED
1 1/4	28	MWC 22(7)U92	WIRE, INSULATED
1 1/2	27	MWC 22(7)SJ2	CABLE, SP, SHIELD/JKT
1 2	26	MWC 22(7)SJ9	CABLE, SP, SHIELD/JKT
1 1/4	25	MWC 22(7)U3	WIRE, INSULATED
1 1/4	24	9	WHITE
3 1/4	23	1	BROWN
2 3/4	22	91	WHY/BRN
2 3/4	21	8	GRAY
3 3/8	20	9	WHITE
3 3/8	19	7	VIO.
3 3/8	18	90	WHY/BLK
2 1/2	17	PINK	PINK
2 5/8	16	MWC 22(7)U2	RED
	15	DELETED	
3 4	14	MWC 22(7)U92	WHY/RED
2 1/4	13	MWC 22(7)U92	"
	12	DELETED	
1 1/8	11	MWC 22(7)U7	VIO.
2 1/2	10	7	"
3 1/4	9	6	BLUE
3 1/2	8	MWC 22(7)U5	GRN.
	7	DELETED	
4 3/4	6	MWC 22(7)U4	YEL
4 3/4	5	MWC 22(7)U2	WHY/RED
1 1/4	4	WI-101-2	WIRE, SHIELD, C.C.
1 3/4	3	MWC 22(7)U92	WIRE, INSULATED
5 2	2	MWC 22(7)U90	WHY/BLK
1 7/2	1	WI-101-2	WIRE, SHIELD, C.C.

THE TECHNICAL MATERIEL CORP.			
MAMARONECK, NEW YORK			
WIRING HARNESS, BRANCHED, MAIN			
STOCK SIZE			
MATERIAL		WEIGHT PER FC.	
TYPE & TEMPER.			
HEAT TREAT. SPEC.		CHECKED	
DRAWN: <i>SPM</i> ELEC. DES. APP. MECH. DES. APP.			
DATE: 9-17-63			
FINAL APPROVAL: <i>6/26/69</i>			
CA-812			

ISSUE	ITEM	TOLERANCES	SCALE: 1:1
DRILL, PUNCH, COMMERCIAL STOCK SIZES AND MANUFACTURERS TOLERANCES ARE NOT INCLUDED.			

REG. PER UNIT	MODEL	PROJECT NO.	ASSY. NO.	DATE
	RTC -2			9-17-63
				USED ON

CA-812