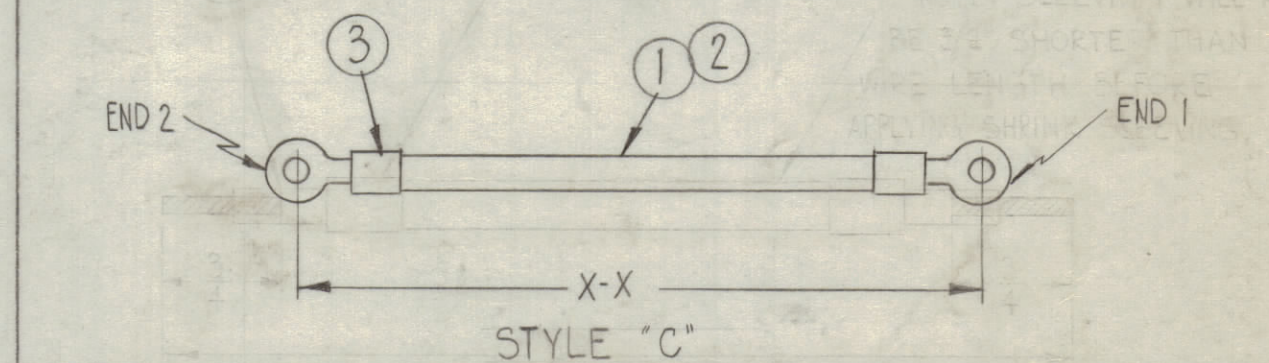
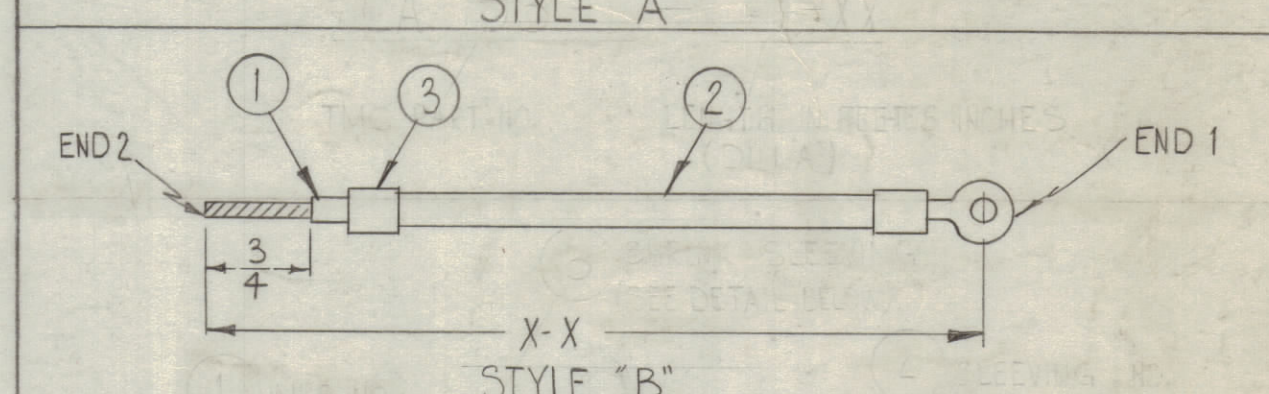
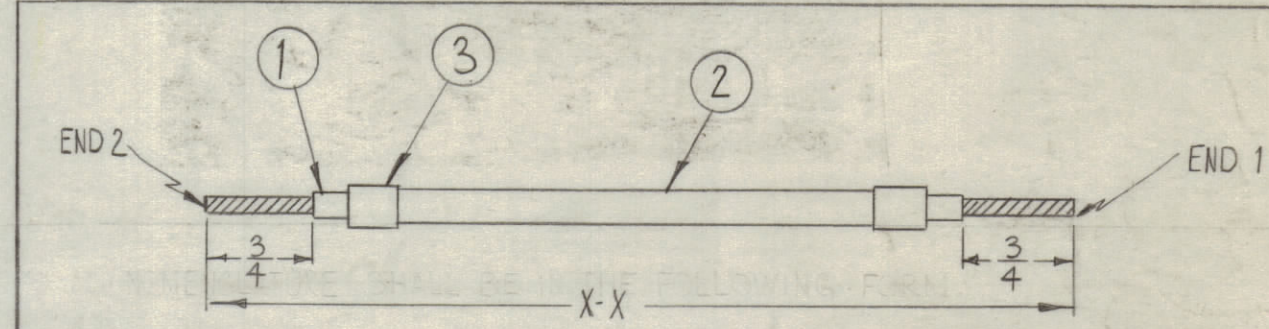
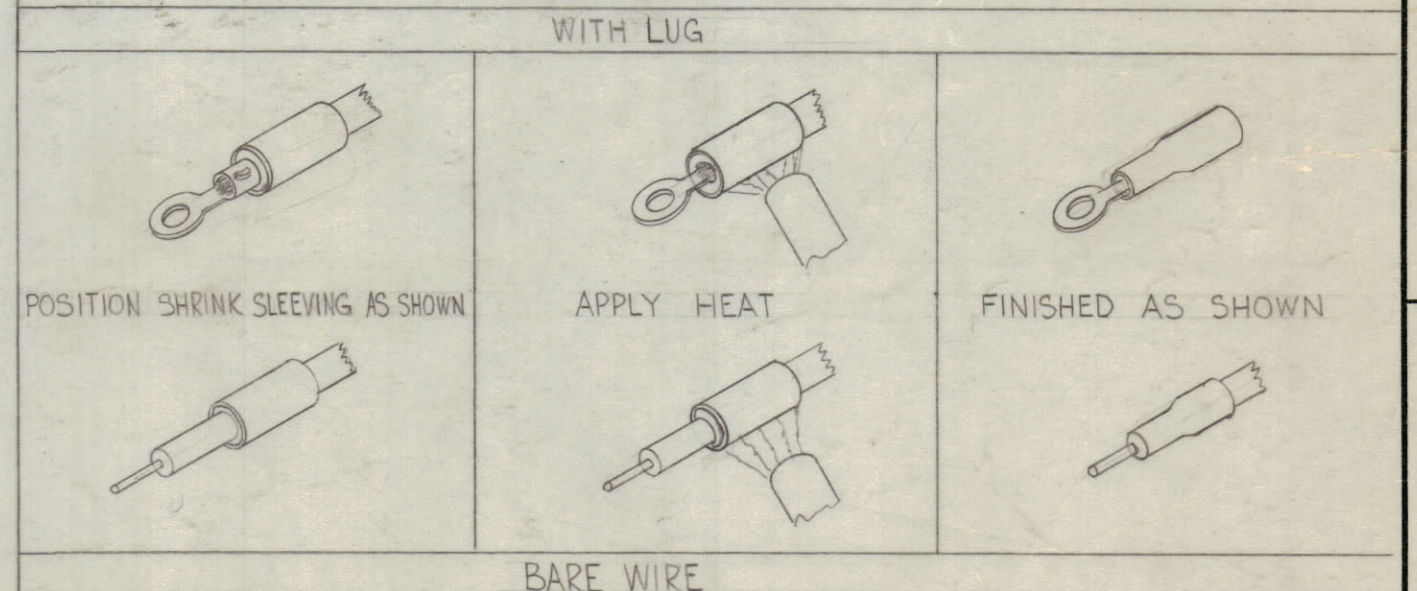


TMC PART NO.	ITEM 1 WIRE N ^o .	ITEM 2 SLEEVING N ^o .	SLEEVING COLOR	TERMINATION OF END N ^o . 1	TERMINATION OF END N ^o . 2	ITEM 3 SHRINK SLEEVING	STYLE
CA-793-1	HWC6(127)B7	PX-100-7-375	VIOLET	TE-197-6-10	TE-197-6-25	PX-830-6-1	C
-2	HWC6(127)B7	PX-100-7-375	VIOLET	TE-197-6-10	NONE	PX-830-6-1	B
-3	HWC6(127)B8	PX-100-8-375	GRAY	TE-197-6-10	TE-197-6-25	PX-830-6-1	C
-4	HWC6(127)B8	PX-100-8-375	GRAY	TE-197-6-10	NONE	PX-830-6-1	B
-5	HWC6(127)B9	PX-100-9-375	WHITE	TE-197-6-25	NONE	PX-830-6-1	B
-6	HWC6(127)B7	PX-100-7-375	VIOLET	TE-197-6-25	NONE	PX-830-6-1	B
-7	HWC6(127)B8	PX-100-8-375	GRAY	TE-197-6-25	NONE	PX-830-6-1	B
-8	WI-137-3	PX-100-9-1.00	WHITE	NONE	NONE	PX-830-750-1	A
-9	WI-137-5	PX-100-7-1.00	VIOLET	NONE	NONE	PX-830-750-1	A
-10	WI-137-4	PX-100-8-1.00	GRAY	NONE	NONE	PX-830-750-1	A
-11	WI-137-3	PX-100-9-1.00	WHITE	TE-178-4	NONE	PX-830-750-1	B
-12	WI-137-5	PX-100-7-1.00	VIOLET	TE-178-4	NONE	PX-830-750-1	B
-13	WI-137-4	PX-100-8-1.00	GRAY	TE-178-4	NONE	PX-830-750-1	B
-14	WI-137-3	PX-100-9-1.00	WHITE	TE-178-4	TE-178-4	PX-830-750-1	C
-15	WI-137-5	PX-100-7-1.00	VIOLET	TE-178-4	TE-178-4	PX-830-750-1	C
-16	WI-137-4	PX-100-8-1.00	GRAY	TE-178-4	TE-178-4	PX-830-750-1	C
-17	HWC4(127)B9	PX-100-9-438	WHITE	TE-197-4-25	NONE	PX-830-4-1	B
-18	HWC4(127)B7	PX-100-7-438	VIOLET	TE-197-4-25	NONE	PX-830-4-1	B
-19	HWC4(127)B8	PX-100-8-438	GRAY	TE-197-4-25	NONE	PX-830-4-1	B
-20	HWC6(127)B9	PX-100-9-375	WHITE	TE-197-6-10	TE-197-6-25	PX-830-6-1	C
-21	HWC6(127)B9	PX-100-9-375	WHITE	TE-197-6-10	NONE	PX-830-6-1	B
-22	HWC6(127)B9	PX-100-8-375	GRAY	TE-197-6-10	TE-197-6-10	PX-830-6-1	C
-23	HWC6(127)B9	PX-100-7-375	VIOLET	TE-197-6-10	TE-197-6-10	PX-830-6-1	C
-24	HWC6(127)B9	PX-100-1-375	BLACK	TE-197-6-10	TE-197-6-10	PX-830-6-1	C
-25	HWC6(127)B9	PX-100-1-375	BLACK	TE-197-6-10	TE-197-6-25	PX-830-6-1	C
-26	MWC14(19)B92	PX-370-11-7-7	NATURAL	TE-155-34170	NONE	PX-830-14-1	B
-27	MWC14(19)B96	PX-370-11-7-5	NATURAL	TE-155-34170	NONE	PX-830-14-1	B
-28	HWC10(37)B7	PX-100-7-263	VIOLET	TE-155-34855	TE-155-34855	PX-830-10-1	C
-29	HWC10(37)B8	PX-100-8-263	GRAY	TE-155-34855	TE-155-34855	PX-830-10-1	C
-30	HWC10(37)B9	PX-100-9-263	WHITE	TE-155-34855	TE-155-34855	PX-830-10-1	C
-31	WI-137-4	PX-370-87-7	NATURAL	TE-178-4	TE-178-4	PX-830-750-1	C
-32	WI-137-5	PX-370-87-7	NATURAL	TE-178-4	TE-178-4	PX-830-750-1	C
-33	HWC10(37)B8	PX-100-8-263	GRAY	TE-155-34854	TE-155-34855	PX-830-10-1	C
-34	HWC10(37)B7	PX-100-7-263	VIOLET	TE-155-34170	TE-155-34170	PX-830-10-1	C
-35	HWC10(37)B8	PX-100-8-263	GRAY	TE-155-34170	TE-155-34170	PX-830-10-1	C
-36	HWC10(37)B9	PX-100-9-263	WHITE	TE-155-34170	TE-155-34170	PX-830-10-1	C
37	TU100-4S	PX370-2-7	NATURAL	TE178-2	TE178-2	PX830-6-1	C
38	TU100-4S	PX370-2-7	NATURAL	TE178-2	TE178-6	PX830-6-1	C

REVISIONS						
ZONE	SYM	DESCRIPTION	DATE	E.M.N. NO.	DRAFT	CHKD
-	X10	CA-793-33 ADDED	5.27.64	X10	NB	
-	O	ORIGINAL RELEASE FOR PRODUCTION	6-4-64	O	A.M.	
-	A	TMC PART NO-34,35,36 ADDED	8-2-65	14614	E	
-	B	CA 793-37 & 38 ADDED	9-25-68	19038	HS	FB



NOTE:
SLEEVING WILL ALWAYS BE 3/4" SHORTER THAN WIRE LENGTH BEFORE APPLYING SHRINK SLEEVING.



NOMENCLATURE SHALL BE IN THE FOLLOWING FORM.

CA-793-1 - X-X
TMC PART NO. LENGTH IN FEET & INCHES.

REQ'D.	ITEM	PART NUMBER	DESCRIPTION	SYMBOL
F. BUDETTI LIST OF MATERIAL				
MATERIAL			THE TECHNICAL MATERIEL CORP. MAMARONECK, NEW YORK	
FINISH			TITLE LEAD, ELECTRICAL	
QTY./UNIT		MODEL USED ON	ASSY. NO.	
SCALE		CODE		
UNLESS OTHERWISE SPECIFIED DIMENSIONS ARE IN INCHES AND INCLUDE CHEMICALLY APPLIED OR PLATED FINISHES				
DECIMALS .X ± .05 .XX ± .01 .XXX ± .005		FRACTIONS ± 1/64 ANGLES ± 0° 30'		
DRAWN W.A. FRANCO		DATE 6-4-63		FINAL APPROVAL RAC
CHECKED aa		DATE		
ELECT. DES. RAC		DATE		
MECH. DES. RAC		DATE 3/6/64		
SHEET			CA-793	B
REV. LTR.				

NOTES

THE CONTENTS OF THIS DRAWING ARE THE EXCLUSIVE PROPERTY OF THE TECHNICAL MATERIEL CORP. ITS UNAUTHORIZED USE OR REPRODUCTION IN WHOLE OR IN PART IS STRICTLY FORBIDDEN.