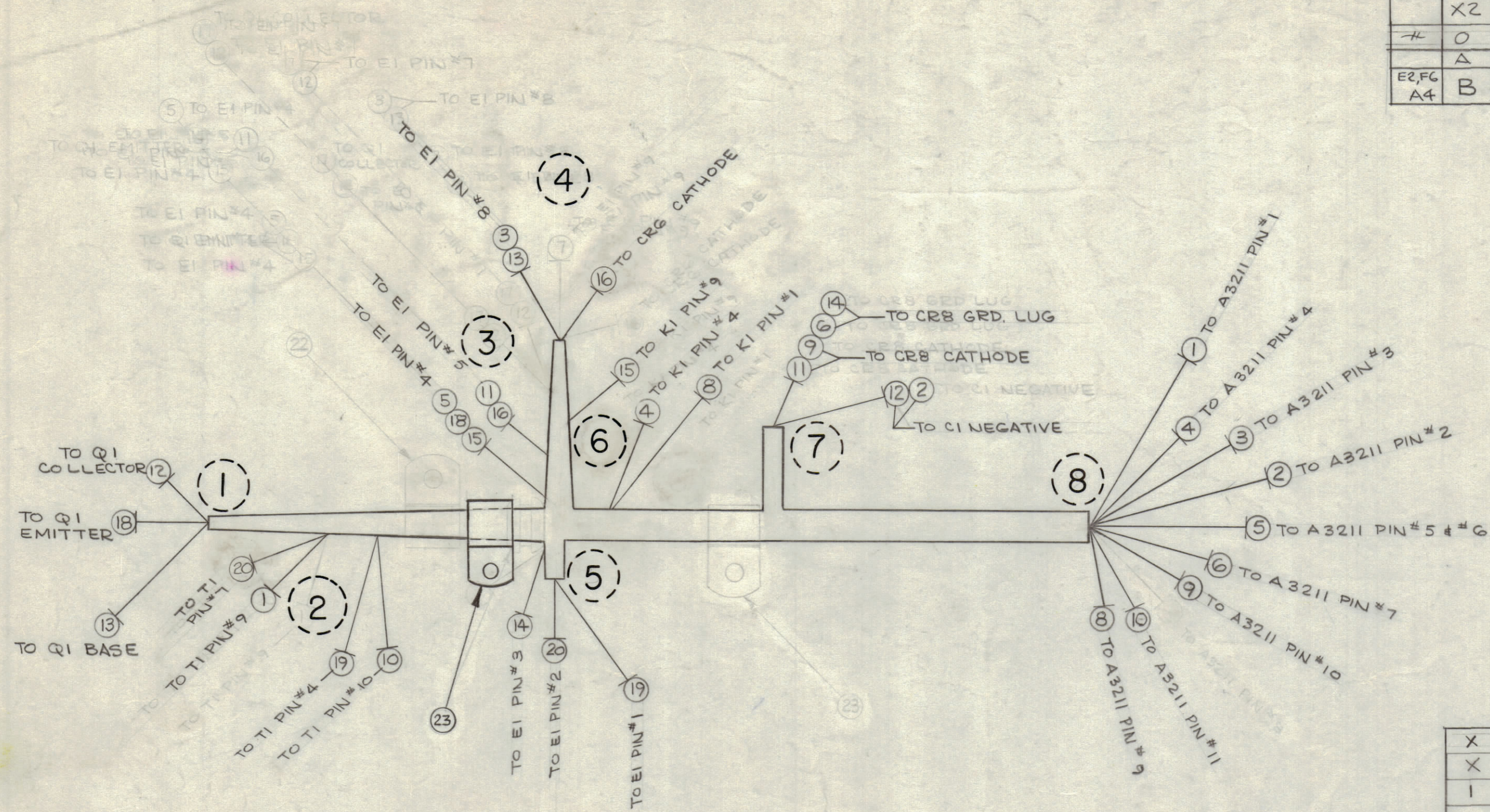


REVISIONS						
ZONE	SYM	DESCRIPTION	DATE	E.M.N. NO.	DRAFT	CHKD
D2	X1	ITEM (22) WAS CU-102-2, 1 REQ.	12/19/63	1	EX	WV
	X2	REMOVED ITEM 7, WAS FROM E1 PIN 9 TO A3211 PIN 8 COLOR ORANGE.	4/7/64	2	JL	WV
#	0	ORIGINAL RELEASE FOR PRODUCTION	6/1/64	0	A.M.	@
	A	ITEM 21 WAS EY102-4, 1REQ.	9-18/64	12391	SRG	@
E2,FG	B	IT.25 ADD., IT.23 PICT. WAS BETW. BREAKOUT 5 & 7 USED ON BLOCK UPDATED	11.24.64	12995	ASB	WV



REQ'D.	ITEM	PART NUMBER	DESCRIPTION	SYMBOL	
X	25	BS100	SOLDER, TIN ALLOY		
X	24	CD-101-1-MW	CORD, LACING	BLK	
1	23	CU-102-3	CLAMP, "G" TYPE		
#	22	#	# DELETED		
#	21	#	# DELETED		
2	5	4 1/8	20 MWC22(7)U90	WIRE, ELECTRICAL	WH/BLK
2	5	4 3/4	19	90	WH/BLK
1	3	5 1/8	18	6	BLUE
#	#	#	17		DELETED
3	4	2 1/4	16	2	RED
3	6	2 1/4	15	6	BLUE
5	7	4 3/8	14	0	BLACK
1	4	7 1/8	13	5	GREEN
1	7	8	12	4	YELLOW
3	7	4 1/2	11	2	RED
2	8	9 1/8	10	91	WH/BRN
7	8	5 3/8	9	2	RED
6	8	7	8 MWC22(7)U9	WIRE, ELECTRICAL	WHITE
4	0	#	7	#	DELETED
7	8	5 5/8	6 MWC22(7)U0	WIRE, ELECTRICAL	BLACK
3	8	7 5/8	5	6	BLUE
6	8	6 7/8	4	9	WHITE
4	8	9 1/4	3	5	GREEN
7	8	7	2	4	YELLOW
2	8	10	1 MWC22(7)U91	WIRE, ELECTRICAL	WH/BRN

THIS SYMBOL DENOTES END OF INSULATION AND NAIL DRIVING POINT. WIRE MUST BE STRIPPED 3/4" BEYOND THIS POINT AND TINNED 1/2" UNLESS OTHERWISE SPECIFIED.

WIRES SHOULD BE PLACED IN CABLE IN NUMERICAL SEQUENCE AS THEY APPEAR IN ITEM COLUMN. SPACE LACING APPROXIMATELY 3/4" APART.

Q'TY./UNIT	MODEL USED ON	ASS'Y. NO.
1	LFSB-1	AX433
1	LFSA-1	AX 433
1	VLRA-1	AX-433
SCALE	CODE	
1:1	A	

THE CONTENTS OF THIS DRAWING ARE THE EXCLUSIVE PROPERTY OF THE TECHNICAL MATERIEL CORP. ITS UNAUTHORIZED USE OR REPRODUCTION IN WHOLE OR IN PART IS STRICTLY FORBIDDEN.

M. GELLMAN LIST OF MATERIAL

THE TECHNICAL MATERIEL CORP.  
MAMARONECK, NEW YORK

TITLE: WIRING HARNESS, BRANCHED - POWER SUPPLY

UNLESS OTHERWISE SPECIFIED DIMENSIONS ARE IN INCHES AND INCLUDE CHEMICALLY APPLIED OR PLATED FINISHES

DECIMALS: .X ± .05, .XX ± .01, .XXX ± .005  
FRACTIONS: ± 1/64  
ANGLES: ± 0° 30'

DRAWN: G. Sorenson  
CHECKED: [Signature]  
ELECT. DES: [Signature]  
MECH. DES: [Signature]

DATE: 6-24-63  
DATE: 5-7-64  
DATE: 5-7-64

FINAL APPROVAL: [Signature]  
DATE: [Signature]

CA-792 B

SHEET: [Blank]  
REV. LTR.: [Blank]