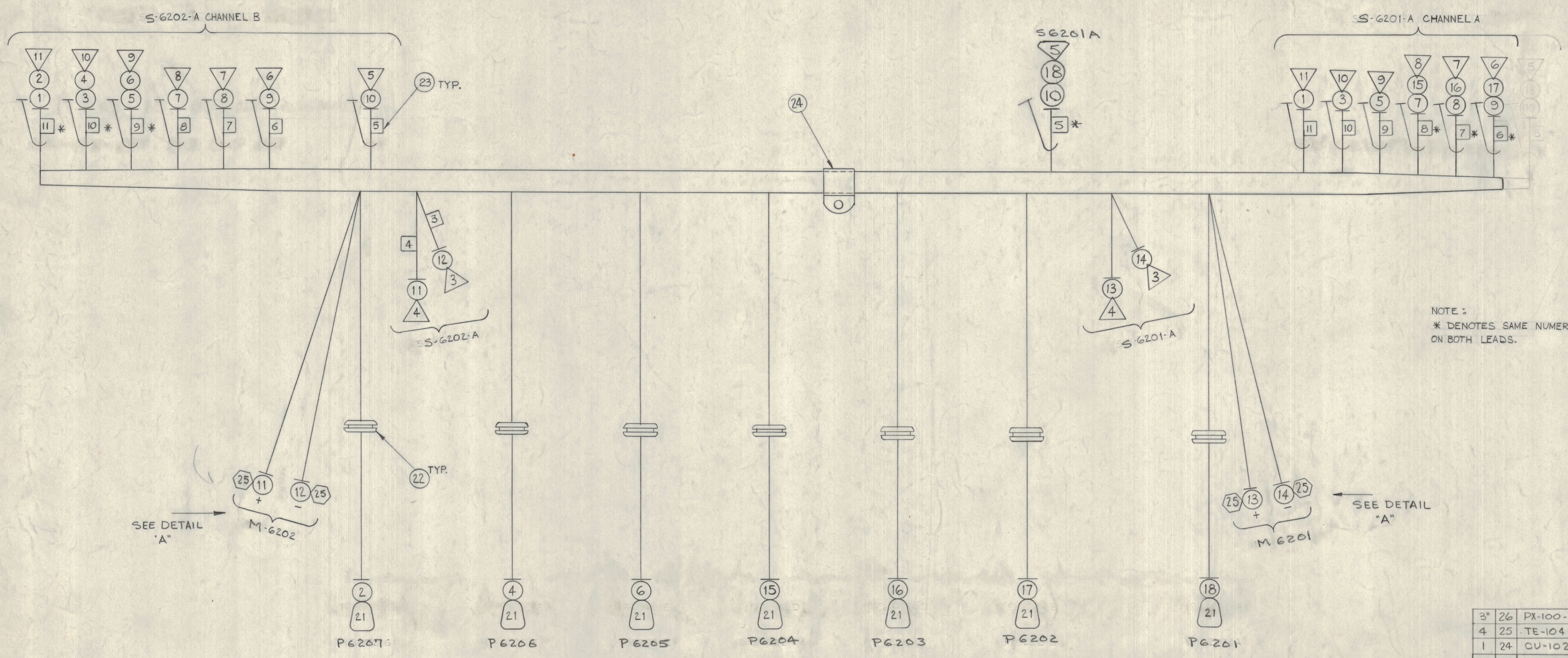


NOTICE TO PERSONS RECEIVING THIS DRAWING
 THE TECHNICAL MATERIEL CORPORATION claims proprietary right in the material disclosed hereon. This drawing is issued in confidence for engineering information only and may not be re-used or used to manufacture anything shown hereon without permission from THE TECHNICAL MATERIEL CORPORATION to the user. This drawing is loaned for mutual assistance and is subject to recall at any time.
 Property of:
 THE TECHNICAL MATERIEL CORPORATION
 MAMARONECK, NEW YORK

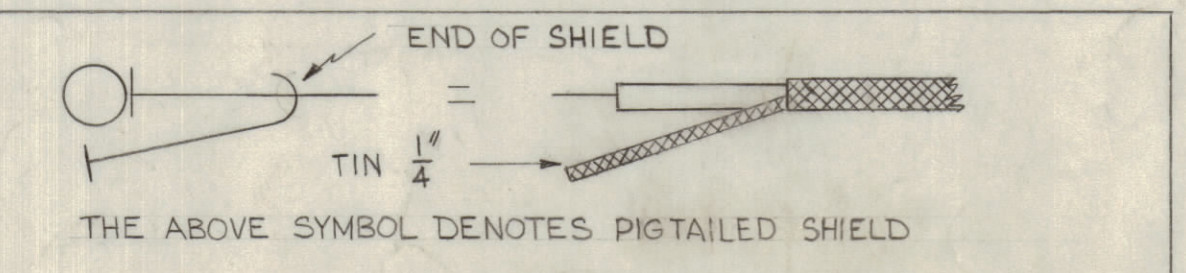
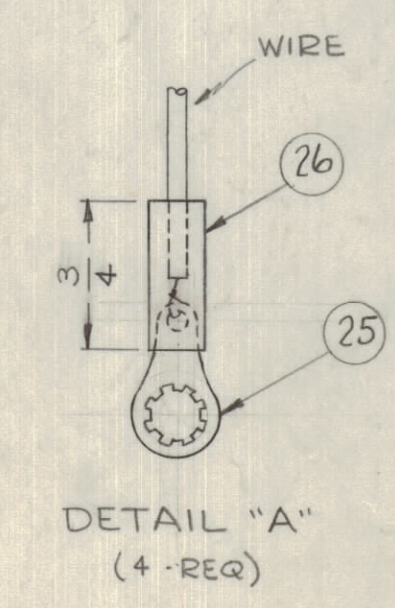


NOTE:
 * DENOTES SAME NUMERAL ON BOTH LEADS.

SEE DETAIL "A"

SEE DETAIL "A"

- SYMBOL NOTES~
- DENOTES ITEM N^oS.
 - ▽ DENOTES PIN N^oS.
 - ◡ DENOTES CONNECTOR.
 - DENOTES WIRE MARKERS.
 - ◡ DENOTES LUGS.



THIS SYMBOL DENOTES END OF INSULATION & NAIL DRIVING POINT WIRE MUST BE STRIPPED 1/2" BEYOND THIS POINT & TINNED 3/8" UNLESS OTHERWISE SPECIFIED.

WIRES SHOULD BE PLACED IN CABLE IN NUMERICAL SEQUENCE AS THEY APPEAR IN ITEM COLUMN. SPACE LACING APPROX. 3/4" APART.

REQ.	ITEM	PART NO.	DESCRIPTION	SYMBOL
3"	26	PX-100-1-.133	SLEEVING, INSULATION	BLACK
4	25	TE-104-5	TERMINAL, LOCKING	
1	24	CU-102-6	CLAMP, "G" TYPE	
23	23	LA-101	WIRE, MARKER	
7	22	EY-102-4	GROMMET, ELASTIC	
7	21	PL-204	CONNECTOR, PLUG, MINIATURE	P6201 THRU P6207
X	20	BS-100	SOLDER, SOFT	
X	19	CD-101-1-MW	CORD LACING	BLACK
5	14 3/4	18	RG-174/U	CABLE, COAXIAL
6	17	17		
7	18 1/2	16		
8	19 3/4	15	RG-174/U	CABLE, COAXIAL
8 1/4	14	MWC 24 (7) UO	CABLE, INSULATED	BLACK
9 1/4	13			RED
8 1/4	12			BLACK
9 1/4	11	MWC 24 (7) U 2	CABLE, INSULATED	RED
22 1/4	10	RG-174/U	CABLE, COAXIAL	
23 1/2	9			
23 1/2	8			
23 1/2	7			
17 1/4	6			
23 3/4	5			
15 3/4	4			
24"	3			
14"	2			
24"	1	RG-174/U	CABLE, COAXIAL	

DATE	2-7-63	DRAWN	8177	CHECKER		ENG. APP.	
UNLESS OTHERWISE SPECIFIED:		SCALE					
DIMENSIONS ARE IN INCHES		MAXIMUM ALLOWABLE TOLERANCES HAVE BEEN DETERMINED AND ANY DEVIATIONS WILL BE CAUSE FOR REJECTION. REMOVE ALL BURRS & SHARP EDGES					
TOLERANCES ON FRACTIONS ± 1/64		DECIMALS ± .005		ANGLES ± 1/2°			

1	HFI-1			2-3-62
REQ. PER UNIT	MODEL	SECTION	ASSY. NO.	DATE
USED ON				

STOCK SIZE		THE TECHNICAL MATERIEL CORP. MAMARONECK, NEW YORK	
MATERIAL		CABLE ASSY, ELECTRICAL BRANCHED	
TYPE & TEMPER	HEAT TREAT. SPEC.	DRAWN	CHECKED
FINISH & SPEC. NO.		ELC. DES. APP.	MECH. DES. APP.
		SHEET OF	
		CA-678 A	

CA-678 A