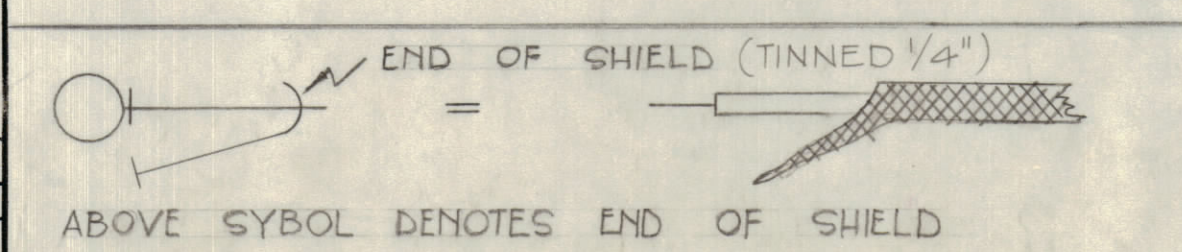


NOTICE TO PERSONS RECEIVING THIS DRAWING
 THE TECHNICAL MATERIEL CORPORATION claims proprietary right in the material disclosed hereon. This drawing is issued in confidence for engineering information only and may not be reproduced or used to manufacture anything shown hereon without permission from THE TECHNICAL MATERIEL CORPORATION to the extent that this drawing is loaned for mutual assistance and is subject to recall at any time.
 Property of:
 THE TECHNICAL MATERIEL CORPORATION
 MAMARONECK, NEW YORK

NOTES
 ▽ PIN NOS. OF CONN. J6210 - J6216, & TUBE SOCKETS
 POS. NOS. OF ALL SWITCHES

THIS SYMBOL DENOTES END OF INSULATION
 NAIL DRIVING POINT WIRE MUST BE STRIPPED 1/2" BEYOND THIS POINT & TINNED 3/8" UNLESS OTHERWISE SPECIFIED.



WIRES SHOULD BE PLACED IN CABLE IN NUMERICAL SEQUENCE AS THEY APPEAR IN ITEM COLUMN. SPACE LACING APPROX. 3/4" APART.

REQ. PER UNIT	ITEM	PART NO.	DESCRIPTION	SYMBOL
	41	BS-100	SOLDER, SOFT	
	40	CD-101-1-MW	CORD, LACING	BLACK
10 1/4	39	RG-174/U	CABLE, COAXIAL	
24 1/4	38	LWC 26(7)U97	CABLE, INSULATION	WH./VIO
30 1/2	37			GREEN
30	36			RED
13 3/4	35			YELLOW
13	34			WH./GRN
11 1/2	33			WH./VIO
12 3/4	32			WH./ORN
14 1/2	31			WH./YEL
16 1/2	30			WH./RED
10 1/2	29			RED/BRN
12 1/4	28			RED/VIO
14	27			RED/BLU
15 1/2	26			RED/GRN
11 3/4	25			RED
10 1/4	24			RED
22 3/4	23			RED/BRN
22 3/4	22			RED/VIO
22 3/4	21			RED/BLU
22 3/4	20			RED/GRN
15 1/2	19			RED/YEL
22 3/4	18			RED/YEL
13 1/2	17			RED/ORN
22 3/4	16			RED/ORN
11	15			RED
22 3/4	14			RED
44	13			WH./GREY
16 3/4	12			GREEN
8 1/2	11			WH./YEL
23 3/4	10			WH./VIO
23 3/4	9			WH./ORN
23 3/4	8			WH./YEL
23 3/4	7			WH./RED
15	6			WH./GRN
23 1/2	5			WH./GRN
13 1/2	4			WH./BLK
23 3/4	3			WH./BLK
11 1/2	2			WHITE
23 3/4	1	LWC 26(7)U9	CABLE, INSULATION	WHITE

SYM	ZONE	DESCRIPTION	DATE	CH. NO.	DRAFTS	CHECKER	ENG. APP.
UNLESS OTHERWISE SPECIFIED:							
DIMENSIONS ARE IN INCHES			SCALE				
TOLERANCES ON FRACTIONS ± 1/64			MAXIMUM ALLOWABLE TOLERANCES HAVE BEEN DETERMINED AND ANY DEVIATIONS WILL BE CAUSE FOR REJECTION. REMOVE ALL BURRS & SHARP EDGES				
DECIMALS ± .005			ANGLES ± 1/2°				

REQ. PER UNIT	MODEL	SECTION	ASS'Y. NO.	DATE	TYPE & TEMPER	HEAT TREAT. SPEC.	FINISH & SPEC. NO.
1	HF1-1			7-24-62			
USED ON							
FINISH & SPEC. NO.							

DRAWN	CHECKED	FINAL APPROVAL
Ken C. Hu	J. D.	BP
ELEC. DES. APP. MECH. DES. APP. SHEET OF		
CA-677		