

NOTICE TO PERSONS RECEIVING THIS DRAWING

THE TECHNICAL MATERIEL CORPORATION claims proprietary right in the material disclosed herein. This drawing is issued in confidence for engineering information only and may not be reproduced or used to manufacture anything shown herein without permission from THE TECHNICAL MATERIEL CORPORATION to the user. This drawing is loaned for mutual assistance and is subject to recall at any time.

Property of:
THE TECHNICAL MATERIEL CORPORATION
MAMARONECK, NEW YORK

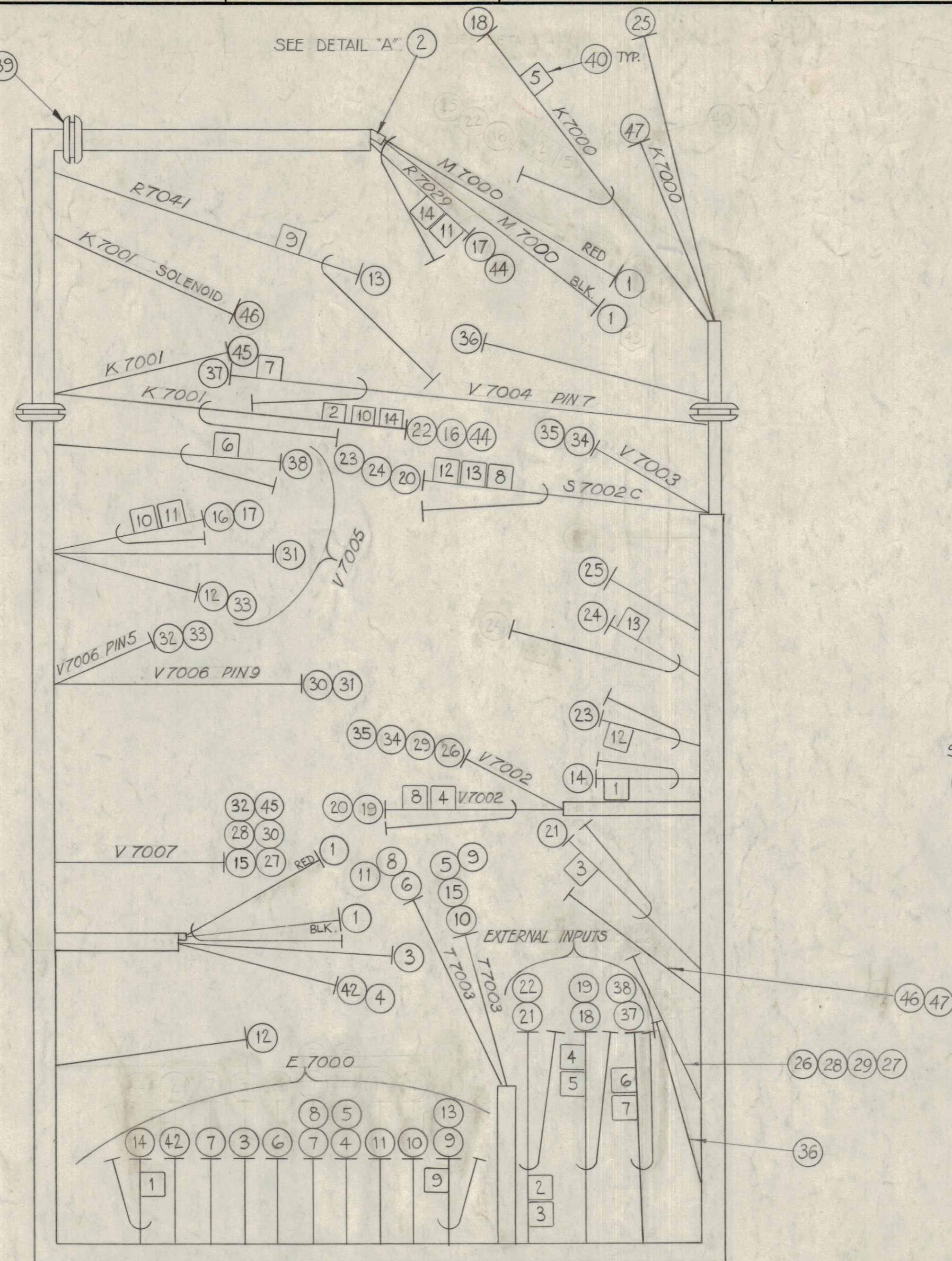
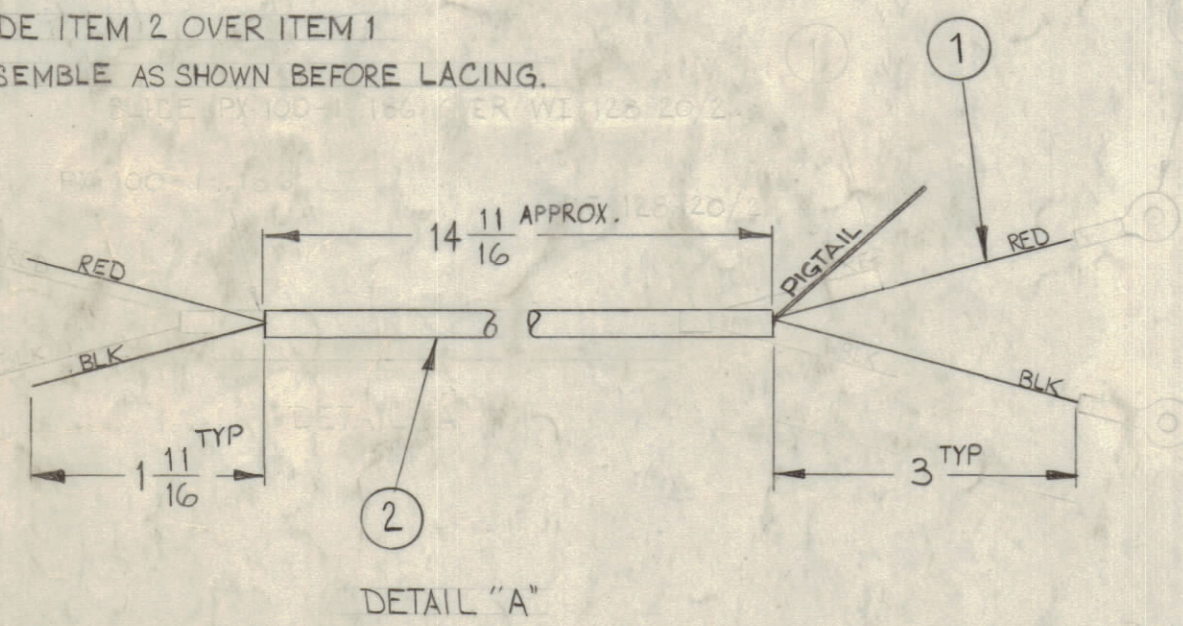
NOTICE TO PERSONS RECEIVING THIS DRAWING

THE TECHNICAL MATERIEL CORPORATION claims proprietary right in the material disclosed herein. This drawing is issued in confidence for engineering information only and may not be reproduced or used to manufacture anything shown herein without permission from THE TECHNICAL MATERIEL CORPORATION to the user. This drawing is loaned for mutual assistance and is subject to recall at any time.

Property of:
THE TECHNICAL MATERIEL CORPORATION
MAMARONECK, NEW YORK

NOTES:

SLIDE ITEM 2 OVER ITEM 1
ASSEMBLE AS SHOWN BEFORE LACING.

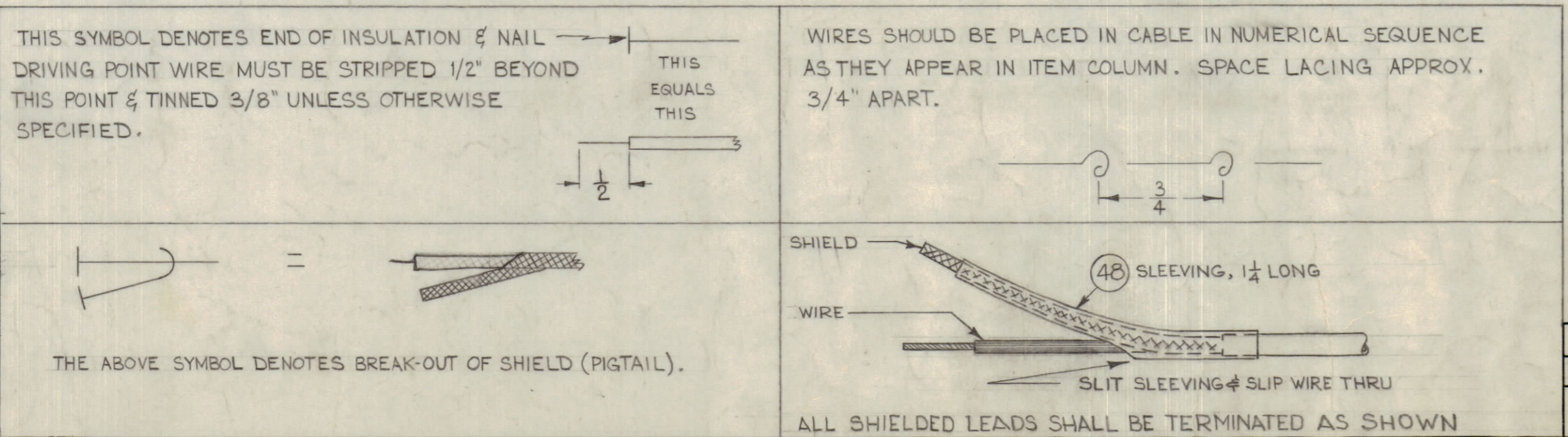


SYMBOL NOTES -

- DENOTES ITEM N^o'S
- DENOTES TAGS (ITEM 40)
- ◇ DENOTES LUGS

REQ.	ITEM	PART NO.	DESCRIPTION	SYMBOL	
1/4	48	PX-100-1-133	SLEEVING, SIZE B	BLACK	
	47	MWC 22(7)U2	FEED THRU TO SOLENOID (K7100)	RED	
	46	MWC 22(7)U0	FEED THRU TO STAND-OFF (R7017)	BLACK	
	45	MWC 22(7)U2	V7007 PIN 6 TO SOLENOID (K7001)	RED	
	44	RG-174/U	K7001 TO R7029 HOT SIDE		
	43		DELETED		
	42	MWC 24(7)U7	TIE POINT TO E7001 PIN 10	VIOLET	
X	41	CD-101-1-MW	CORD LACING	BLACK	
28	40	LA-101	WIRE MARKER		
3	39	EY-102-4	GROMMET, ELASTIC		
	38	RG-174/U	V7005 PIN 7 TO J7005		
	37	RG-174/U	V7004 PIN 7 TO J7004		
	36	MWC 22(7)U 91	C7000 TO STAND-OFF	WH/BRN	
	35		V7002 PIN 4 TO V7003 PIN 4	WH/BRN	
	34		V7002 PIN 3 TO V7003 PIN 5	BROWN	
	33		V7006 PIN 5 TO V7005 PIN 5	BROWN	
	32		V7007 PIN 3 TO V7006 PIN 5	BROWN	
	31		V7006 PIN 9 TO V7005 PIN 9	WH/BRN	
	30		V7007 PIN 4 TO V7006 PIN 9	WH/BRN	
	29		FEED THRU TO V7002 PIN 4	WH/BRN	
	28		FEED THRU TO V7007 PIN 4	WH/BRN	
	27		FEED THRU TO V7007 PIN 3	BROWN	
	26	MWC 22(7)U 1	FEED THRU TO V7002 PIN 3	BROWN	
	25	MWC 24(7)U2	TIE POINT TO R7014	RED	
	24	RG-174/U	T7002 PIN 3 TO S7002 C PIN 1		
	23	MWC 22(7)SJ2	C7019 TO S7002 C PIN 7	RED	
	22	RG-174/U	J7002 TO C7060		
	21		J7000 TO T7000 YELLOW		
	20		V7002 PIN 1 TO S7002 C PIN 5		
	19		J7001 TO V7002 PIN 1		
	18		J7003 TO K7000		
	17		V7005 PIN 2 TO R7029 CENTER TAP		
	16	RG-174/U	TIE POINT TO K7001		
	15	MWC 24(7)U 6	V7007 PIN 5 TO T7003 PIN 1	BLUE	
	14	MWC 22(7)SJ4	E7000 PIN 11 TO R7020	YELLOW	
	13	MWC 22(7)SJ4	E7000 PIN 2 TO R7041 HOT SIDE	YELLOW	
	12	MWC 24(7)U93	TIE POINT TO V7005 PIN 3	WH/ORN.	
	11		E7000 PIN 4 TO T7003 PIN 10	WH/VIO.	
	10		E7000 PIN 3 TO T7003 PIN 9	YELLOW	
	9		E7000 PIN 2 TO T7003 PIN 8	WH/BLUE	
	8		E7000 PIN 6 TO T7003 PIN 5	WHITE	
	7		E7000 PIN 9 TO E7000 PIN 6	WH/ORN.	
	6		E7000 PIN 7 TO T7003 PIN 4	WH/RED	
	5		E7000 PIN 5 TO T7003 PIN 6	ORANGE	
	4		S7003 TO E7000 PIN 5	ORANGE	
	3		MWC 24(7)U 96	TIE POINT TO E7000 PIN 8	WH/BLUE
14 1/2	2	PX-100-1-.186	SLEEVING, INSULATION	BLACK	
19 3/8	1	WI-128-20/2	M7000 TO TIE POINTS	RED BLACK	

NOTE: CHANGE SCHEMATIC ACCORDING TO CA-674 BUILD-UP



SYM	ZONE	DESCRIPTION	DATE	CH. NO.	DRAFTS	CHECKER	ENG. APP.
C		IT. 43 (TE156-32953) DELE.	5-7-65	14052	92	816	
B		ON SYMBOL NOTES, 1/2 DIM WAS 3/8	6-12-63	8258			
A		ITEM (48) ADDED, SHIELDED LEAD DETAIL ADDED	5-7-63	8951			

UNLESS OTHERWISE SPECIFIED:

DIMENSIONS ARE IN INCHES

TOLERANCES ON FRACTIONS ± 1/64 DECIMALS ± .005 ANGLES ± 1/2°

SCALE: MAXIMUM ALLOWABLE TOLERANCES HAVE BEEN DETERMINED AND ANY DEVIATIONS WILL BE CAUSE FOR REJECTION. REMOVE ALL BURRS & SHARP EDGES

REQ. PER UNIT	MODEL	SECTION	ASSY. NO.	DATE
1	HFA-1			7-26-62

REQ.	ITEM	PART NO.	DESCRIPTION	SYMBOL
			FAIOLA	
THE TECHNICAL MATERIEL CORP. MAMARONECK, NEW YORK				
CABLE ASSY. POWER ELECTRICAL BRANCHED, MAIN (CHANNEL A)				
MATERIAL				
DRAWN: [Signature] CHECKED: [Signature] FINAL APPROVAL: [Signature]				
TYPE & TEMPER. HEAT TREAT. SPEC. GRF CA-674				
FINISH & SPEC. NO. ELEC. DES. APP. MECH. DES. APP. SHEET OF				