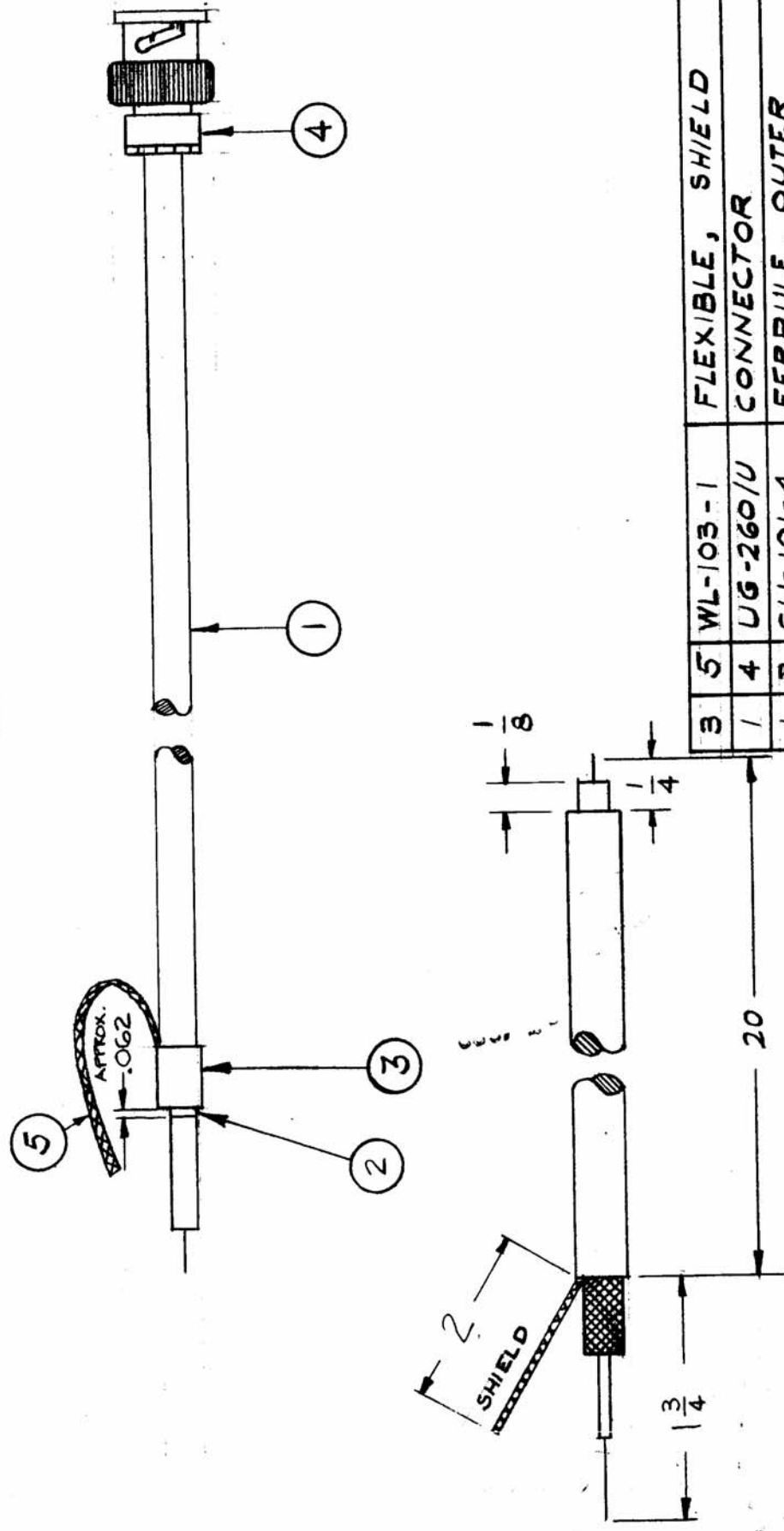


CA-535 D

REQ. PER UNIT	MODEL	USED ON
1	CMD-1	ASBY. NO. AD-103
		DATE 3-25-60



3	5	WL-103-1	FLEXIBLE, SHIELD		
1	4	UG-260/U	CONNECTOR		P302
1	3	CU-101-4	FERRULE, OUTER		
1	2	CU-101-3	FERRULE, INNER		
22	1	RG-59/U	CABLE		

REG. ITEM	PART NO.	DESCRIPTION	SYMBOL
		THE TECHNICAL MATERIEL CORP.	
		MAMARONECK, NEW YORK	
		CABLE, R.F.	
		MASTER OSCILLATOR	
		TOBILLO	
		WIDE	
		CHECKED	FINAL APPR VAL
		DRAWN	CA-535 D
		HEAT TREAT. SPEC.	
		FINISH & SPEC. NO.	
		ELEC. DES. APP MECH. DES. APP	

ITEM 1 (REQ) WAS 20
 OPERATED IN CHANGES FOR FIGURAL PROTECTION
 1-3/4 DIM. WAS 1-1/4
 2" DIM. WAS 1-1/2
 P302 ADDED TO ITEM 4 SYM. COLUMN
 CHANGED FROM

SCALE:

MAXIMUM ALLOWABLE TOLERANCES HAVE BEEN DETERMINED AND ANY DEVIATIONS WILL BE CAUSE FOR REJECTION. REMOVE ALL BURRS AND SHARP EDGES

DEC. DIM. ±
 FRAG. DIM. ± 1/64
 ANGULAR DIM. ±