

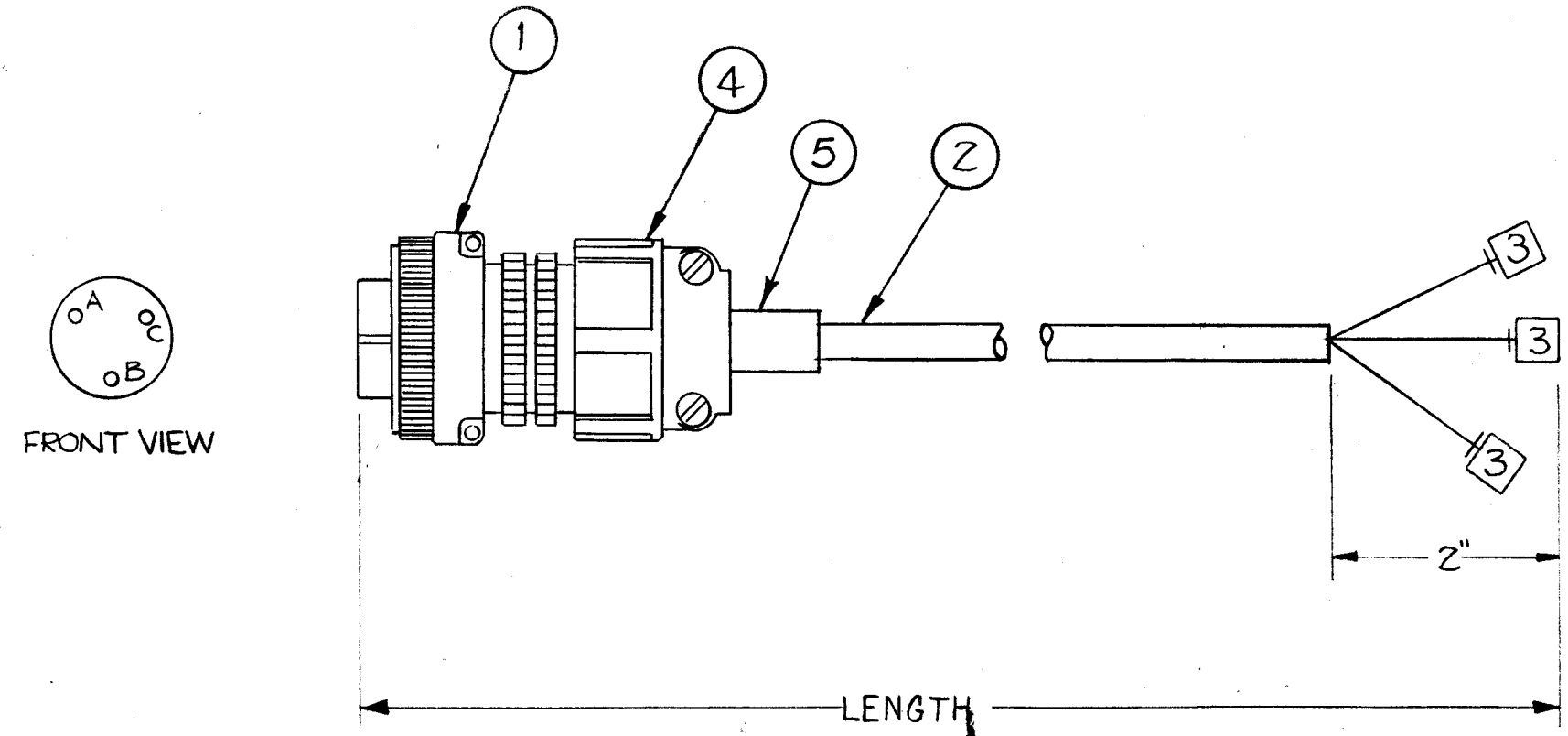
CA-498 G

TMC PART #	ITEM 2	LENGTH
CA-498-1	108"	108"
CA-498-2	24"	24"
CA-498-3	36"	36"

COLOR CABLE CODE	
PIN	COLOR OF CABLE
A	Red
B	White
C	Black

NOTE

1. For connection normally Closed connect A to B.
2. For connection normally open connect A to C.



NOTICE TO PERSONS RECEIVING THIS DRAWING

THE TECHNICAL MATERIEL CORPORATION claims proprietary right in the material disclosed hereon. This drawing is issued in confidence for engineering information only and may not be reproduced or used to manufacture anything shown hereon without permission from THE TECHNICAL MATERIEL CORPORATION to the user. This drawing is loaned for mutual assistance and is subject to recall at any time.

Property of:
THE TECHNICAL MATERIEL CORPORATION
MAMARONECK, NEW YORK

G		ADD CA498-3	2-7-69	19312	GE	HQ	FB	HQ
F		QTY. REQ. ITEM 2 WAS X P/No ITEM 4 WAS MS 3057-6	4-10-67	18026	G.D.L.			
E	2	IT. 6 ADDED.	1-21-65	13220	RL	@		
	1	IT. 4 WAS MS-3057-6A						
D	1	IT. #5 ADDED	3-30-64	11134	WPS	HQ	LB	
C	1	24" Dim. Was 18 On CA-498-2	12-14-61	6041	H.L.	RK	RK	
B	1	TMC PART# CHART ADDED	1-4-60	3866	M.H. 9	RB	RK	
A	1	ITEM 4 WAS MS-3057-6	5-16-60	2265	R	HQ		

ISSUE	ITEM	CHANGED FROM	DATE	CH. NO.	DRAFTS	CHECKER	ENG. APP.
TOLERANCES		SCALE:					
DEC. DIM. ±		MAXIMUM ALLOWABLE TOLERANCES HAVE BEEN DETERMINED AND ANY DEVIATIONS WILL BE CAUSE FOR REJECTION.					
FRAC. DIM. ±		REMOVE ALL BURRS AND SHARP EDGES					
ANGULAR DIM. ±							

X	6	BS100	SOLDER, TIN ALLOY	
1	5	MS-3420-6-A	BUSHING, CABLE	
1	4	MS-3057-6A	CLAMP, CABLE	
3	3	TE-120-2	SPADE LUG	
1	2	WI-130-3-20-(See Table)	CABLE, MULTI-CONDUCTOR	
1	1	MS-3106A-145-1S	CONNECTOR, PLUG (Female)	P103
REQ. ITEM	PART NO.		DESCRIPTION	SYMBOL
STOCK SIZE			THE TECHNICAL MATERIEL CORP. MAMARONECK, NEW YORK	
MATERIAL			TRANSMITTER INTERLOCK	
			CABLE	
TYPE & TEMPER		HEAT TREAT. SPEC.	DRAWN	CHECKED
FINISH & SPEC. NO.		ELEC. DES. APP.	MECH. DES. APP.	FINAL APPROVAL
				CA-498 G

1	ATS-2(50/70)			11-6-59
REQ. PER UNIT	MODEL	PROJECT NO.	ASS'Y. NO.	DATE
USED ON				