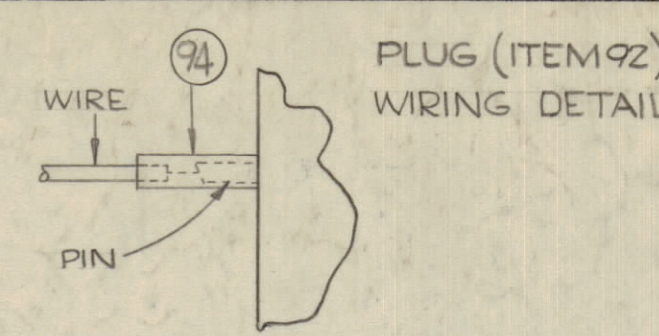
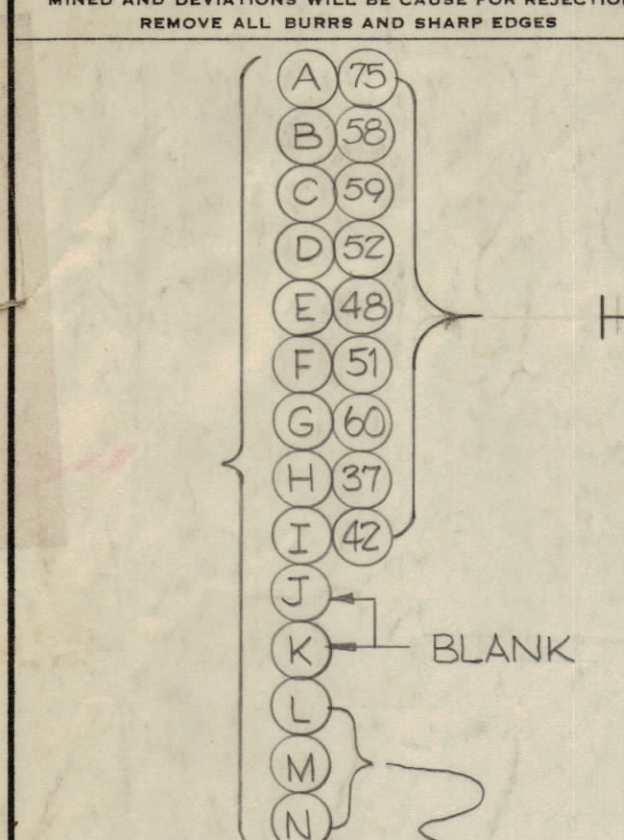


IF IT IS FOUND DESIRABLE TO CHANGE ANY TOLERANCE OR OTHER DETAIL SPECIFIED ON THIS DRAWING NOTIFY THE PURCHASER PROMPTLY.
 MAXIMUM ALLOWABLE TOLERANCES HAVE BEEN DETERMINED AND DEVIATIONS WILL BE CAUSE FOR REJECTION. REMOVE ALL BURRS AND SHARP EDGES.



SOLDER 3" LENGTHS OF ITEM 91 TO PINS L, M, N OF ITEM 92 (RECEPTACLE) BEFORE ATTACHING RECEPTACLE TO CABLE



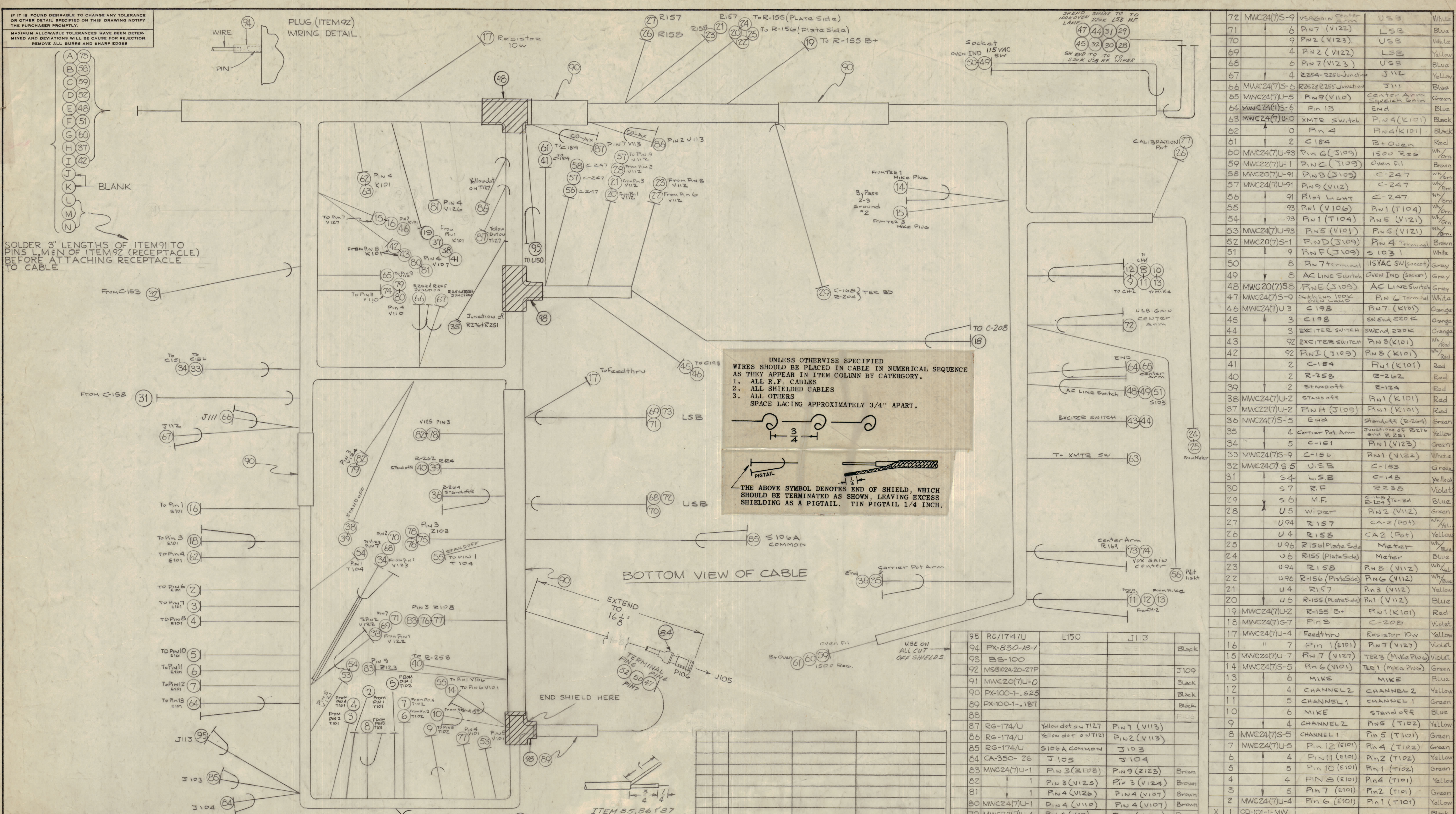
D	1	ALL SHIELDS & ETH. REVISION 26-52. 98 ADDED	1/16	15474	2 1/2	90	aa
		ITEM 66 ADDED	3/16	5419	6L	RU	
		ITEM 91, 92 LEADSTONE END WAS 1 1/8" LONG					
B	1	ITEM 4, WAS MWC24(7)S-6	7/32	1639	MS		
A	1	ITEM 46 - MWC24(7)S-6 WAS MWC 24(7)U-6	1/2	59	1614	P	
ISSUE	ITEM	CHANGED FROM	DATE	CN. NO.	DRAFTS	CHECKER	ENG. APP.
TOLERANCES		SCALE:					
ALL OTHERS	DEC. DIM. ±	FRAC. DIM. ±		DRILL, PUNCH, COMMERCIAL STOCK SIZES AND MANUFACTURERS TOLERANCES ARE NOT INCLUDED.			

THIS SYMBOL DENOTES END OF INSULATION AND NAIL DRIVING POINT. WIRE MUST BE STRIPPED 3/4" BEYOND THIS POINT AND TINNED 1/2" UNLESS OTHERWISE SPECIFIED.

THIS SYMBOL INDICATES END OF SHIELDING.

UNLESS OTHERWISE SPECIFIED WIRES SHOULD BE PLACED IN CABLE IN NUMERICAL SEQUENCE AS THEY APPEAR IN ITEM COLUMN BY CATEGORY.
 1. ALL R.F. CABLES
 2. ALL SHIELDED CABLES
 3. ALL OTHERS
 SPACE LACING APPROXIMATELY 3/4" APART.

THE ABOVE SYMBOL DENOTES END OF SHIELD, WHICH SHOULD BE TERMINATED AS SHOWN, LEAVING EXCESS SHIELDING AS A PIGTAIL. TIN PIGTAIL 1/4 INCH.



95	RG-174/U	L150	J113	
94	PX-830-18-1			Black
93	BS-100			
92	MS8102A-20-27P			J109
91	MWC20(7)U-0			Black
90	PX-100-1-.625			Black
89	PX-100-1-.187			Black
88				
87	RG-174/U	Yellow dot on T127	PIN 7 (V113)	
86	RG-174/U	Yellow dot on T127	PIN 2 (V113)	
85	RG-174/U	S106A COMMON	J103	
84	CA-350-26	J105	J104	
83	MWC24(7)U-1	PIN 3 (Z108)	PIN 9 (Z123)	Brown
82		PIN 3 (V125)	PIN 3 (V124)	Brown
81		PIN 4 (V126)	PIN 4 (V107)	Brown
80	MWC24(7)U-1	PIN 4 (V110)	PIN 4 (V107)	Brown
79	MWC22(7)U-1	PIN 4 (V10)	PIN 3 (V124)	Brown
78	MWC22(7)U-1	PIN 3 (V125)	PIN 3 (Z108)	Brown
77	MWC24(7)U-1	PIN 3 (Z108)	PIN 4 (V101)	Brown
76	MWC20(7)U-1	PIN 3 (Z106)	PIN 3 (Z103)	Brown
75	MWC20(7)U-1		PIN 3 (Z103)	Brown
74	MWC24(7)U-3	PIN 3 (V110)	Vox Gain Center	Orange
73	MWC24(7)S-6	Center Arm (E109)	USB	Blue

1	SBE-3,6	A0-101	SECTION	ASSY. NO.	10-9-59
REQ PER UNIT	MODEL	SECTION	ASSY. NO.	DATE	USED ON

72	MWC24(7)S-9	VS2 Gain Center	USB	White
71	6	PIN 7 (V122)	LSB	Blue
70	9	PIN 2 (V123)	USB	White
69	4	PIN 2 (V122)	LSB	Yellow
68	6	PIN 7 (V123)	USB	Blue
67	4	R254-R255 Junction	J112	Yellow
66	MWC24(7)S-6	R252-R255 Junction	J111	Blue
65	MWC24(7)U-5	PIN 9 (V110)	Center Arm Squelch Gain	Green
64	MWC24(7)S-6	PIN 13	End	Blue
63	MWC24(7)U-0	XMTR SW.itch	PIN 9 (K101)	Black
62	0	PIN 4	PIN 4 (K101)	Black
61	2	C184	B+ Oven	Red
60	MWC24(7)U-93	PIN 6 (J109)	1500 Reg	Wh/Orn
59	MWC22(7)U-1	P.N.C (J109)	Oven Fil	Brown
58	MWC20(7)U-91	PIN B (J109)	C-247	Wh/Orn
57	MWC24(7)U-91	PIN 9 (V112)	C-247	Wh/Orn
56	91	PLOT LIGHT	C-247	Wh/Orn
55	93	PIN 1 (V104)	PIN 1 (T104)	Wh/Orn
54	93	PIN 1 (T104)	PIN 5 (V121)	Wh/Orn
53	MWC24(7)U-93	PIN 5 (V101)	PIN 5 (V121)	Wh/Orn
52	MWC20(7)S-1	PIN D (J109)	PIN 4 Terminal	Brown
51	9	PIN F (J109)	S103	White
50	8	PIN 7 terminal	115VAC SW (socket)	Gray
49	8	AC LINE Switch	Oven Ind (socket)	Gray
48	MWC20(7)S-8	PIN E (J109)	AC LINE Switch	Gray
47	MWC24(7)S-9	Switch END 100K	PIN 6 Terminal	White
46	MWC24(7)U-3	C198	PIN 7 (K101)	Orange
45	3	C198	SW END 220K	Orange
44	3	EXCITER SWITCH	SW END 220K	Orange
43	92	EXCITER SWITCH	PIN 8 (K101)	Wh/Red
42	92	PIN I (J109)	PIN 8 (K101)	Wh/Red
41	2	C-184	PIN 1 (K101)	Red
40	2	R-258	R-262	Red
39	2	STANDOFF	R-124	Red
38	MWC24(7)U-2	STANDOFF	PIN 1 (K101)	Red
37	MWC22(7)U-2	PIN H (J109)	PIN 1 (K101)	Red
36	MWC24(7)S-5	End	Standoff (R-264)	Green
35	4	Corner Pot Arm	Junction of R270 and R251	Yellow
34	5	C-156	PIN 1 (V123)	Green
33	MWC24(7)S-9	C-156	PIN 1 (V122)	White
32	MWC24(7)S-5	U.S.B	C-153	Green
31	54	L.S.B	C-148	Yellow
30	57	R.F	R238	Violet
29	56	M.F.	C168, R204, R203	Blue
28	U5	Wiper	PIN 2 (V112)	Green
27	U94	R157	CA-2 (Pot)	Wh/Yel
26	U4	R158	CA2 (Pot)	Yellow
25	U96	R156 (Plate Side)	Meter	Wh/Blue
24	U6	R155 (Plate Side)	Meter	Blue
23	U94	R158	PIN 3 (V112)	Wh/Yel
22	U96	R156 (Plate Side)	PIN 6 (V112)	Wh/Blue
21	U4	R157	PIN 3 (V112)	Yellow
20	U5	R155 (Plate Side)	PIN 1 (V112)	Blue
19	MWC24(7)U-2	R-155 B+	PIN 1 (K101)	Red
18	MWC24(7)S-7	PIN 3	C-208	Violet
17	MWC24(7)U-4	Feedthru	Resistor 10W	Yellow
16	"	"	PIN 7 (V127)	Violet
15	MWC24(7)U-7	PIN 7 (V127)	TER 3 (Mike Plug)	Violet
14	MWC24(7)S-5	PIN 6 (V101)	TER 1 (Mike Plug)	Green
13	6	MIKE	MIKE	Blue
12	4	CHANNEL 2	CHANNEL 2	Yellow
11	5	CHANNEL 1	CHANNEL 1	Green
10	6	MIKE	STANDOFF	Blue
9	4	CHANNEL 2	PIN 5 (T102)	Yellow
8	MWC24(7)S-5	CHANNEL 1	PIN 5 (T101)	Green
7	MWC24(7)U-5	PIN 12 (E101)	PIN 4 (T102)	Green
6	4	PIN 11 (E101)	PIN 2 (T102)	Yellow
5	5	PIN 10 (E101)	PIN 1 (T102)	Green
4	4	PIN 8 (E101)	PIN 4 (T101)	Yellow
3	5	PIN 7 (E101)	PIN 2 (T101)	Green
2	MWC24(7)U-4	PIN 6 (E101)	PIN 1 (T101)	Yellow
X	1	CD-101-1-MW		Black

REQ. ITEM	PART NO.	TO	DESCRIPTION	FROM	SYMBOL
THE TECHNICAL MATERIEL CORP. MAMARONECK, NEW YORK					
STOCK SIZE					
CABLE - MAIN					
SBE-3					
MATERIAL		WEIGHT PER FC.			
TYPE & TEMPER					
HEAT TREAT. SPEC.		DRAWN		MECH. DES. APP.	
FINISH & SPEC. NO.		CHECKED		FINAL APPROVAL	