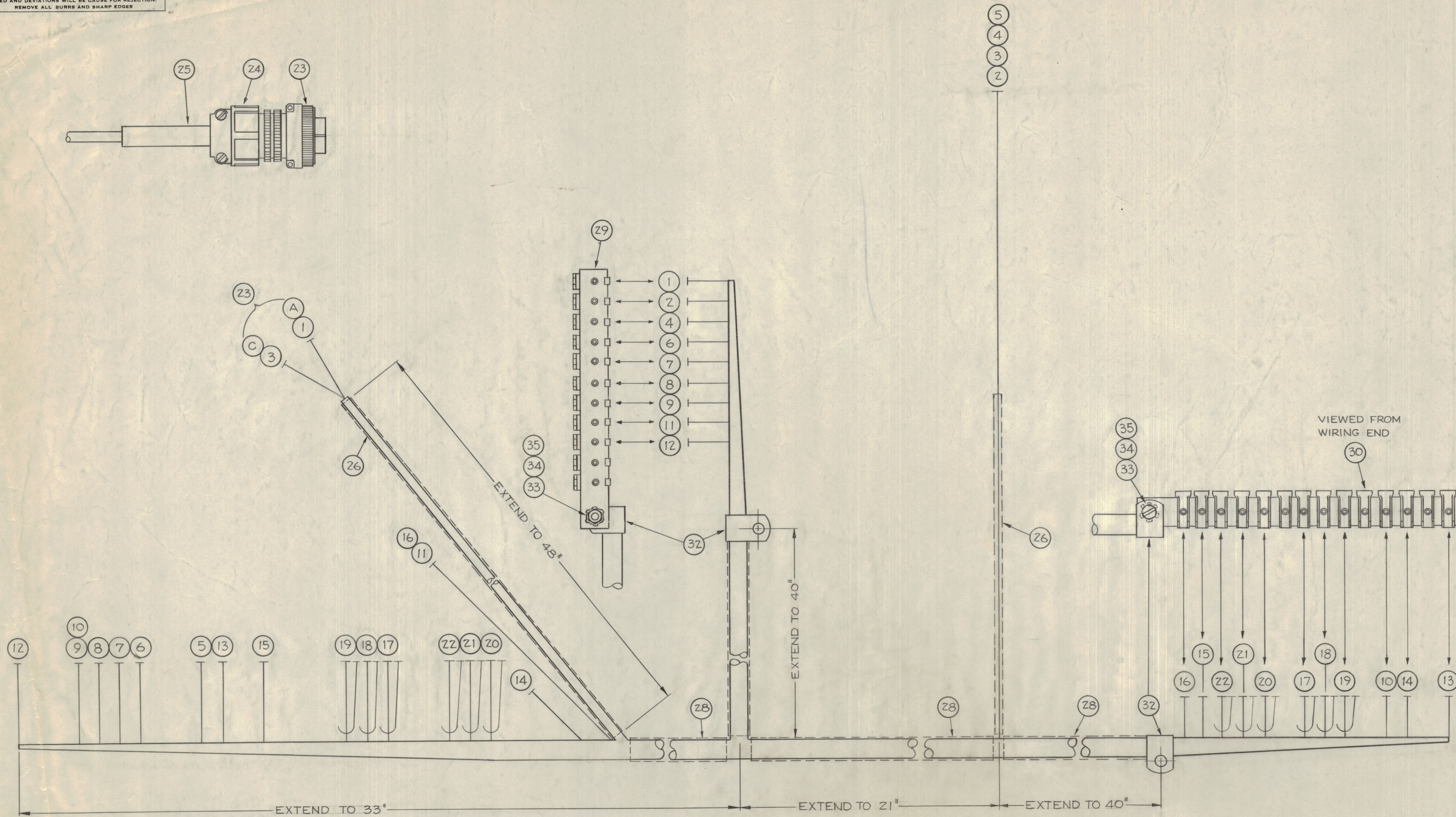
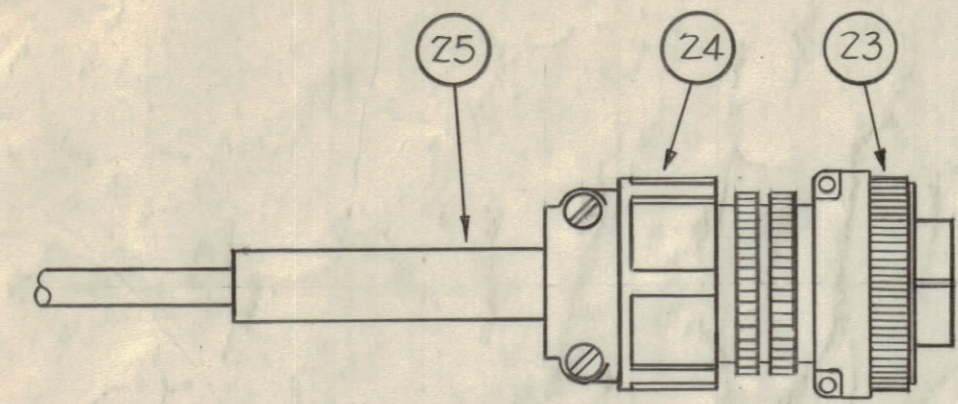


IF IT IS FOUND DESIRABLE TO CHANGE ANY TOLERANCE OR OTHER DETAIL SPECIFIED ON THIS DRAWING NOTIFY THE PURCHASER PROMPTLY.
 MAXIMUM ALLOWABLE TOLERANCES HAVE BEEN DETERMINED AND DEVIATIONS WILL BE CAUSE FOR REJECTION. REMOVE ALL BURRS AND SHARP EDGES.



REQ. ITEM	PART NO.	DESCRIPTION	SYMBOL
2	35	NTH063ZBN18 NUT, HEXAGON	
2	34	LWE06MRN LOCKWASHER, EXTERNAL	
2	33	SCB50632BN6 SCREW, MACHINE	
1	32	CU102-5 CLAMP, G' TYPE	
1	31	BS100 SOLDER, SOFT	
1	30	TM105-14AR FANNING STRIP	
1	29	TM105-11AL FANNING STRIP	
	28	PX100-1-.625 INSULATION, SLEEVING	Black
	27	PX100-1-.500 INSULATION, SLEEVING	Black
	26	PX100-1-.375 INSULATION, SLEEVING	Black
1	25	MS3420-6A BUSHING, CABLE	
1	24	MS3057-6 CLAMP, CABLE	
	23	MS3106A-14529 CONNECTOR, PLUG (Female)	
	22	MWC24(7)S6 CABLE, INSULATED (SHIELDED)	Blue
	21	9	White
	20	2	Red
	19	6	Blue
	18	9	White
	17	MWC24(7)S2 CABLE, INSULATED (SHIELDED)	Red
	16	MWC22(7)U0 CABLE, INSULATED	Black
	15	93	white orange
	14	92	white Red
	13	91	white Brown
	12	90	white Black
	11	0	Black
	10	4	Yellow
	9	4	Yellow
	8	9	White
	7	8	Grey
	6	7	Violet
	5	6	Blue
	4	5	Green
	3	3	Orange
	2	2	Red
1	MWC22(7)U1	CABLE, INSULATED	Brown

DEC 7 1960
OBsolete

THE TECHNICAL MATERIEL CORP. MAMARONECK, NEW YORK	
STOCK SIZE	CABLE, MAIN
MATERIAL	WEIGHT PER FC.
TYPE & TEMPER	John C. Bielz
DRAWN	ELEC. DES. APP.
CHECKED	MECH. DES. APP.
HEAT TREAT. SPEC.	FINAL APPROVAL
FINISH & SPEC. NO.	CA-485

ISSUE	ITEM	CHANGED FROM	DATE	CN. NO.	DRAFTS	CHECKER	ENG. APP.
TOLERANCES							
SCALE:							
DRILL, PUNCH, COMMERCIAL STOCK SIZES AND MANUFACTURERS TOLERANCES ARE NOT INCLUDED.							

ISSUE	ITEM	CHANGED FROM	DATE	CN. NO.	DRAFTS	CHECKER	ENG. APP.

REQ. PER UNIT	MODEL	PROJECT NO.	ASSY. NO.	DATE
USED ON				