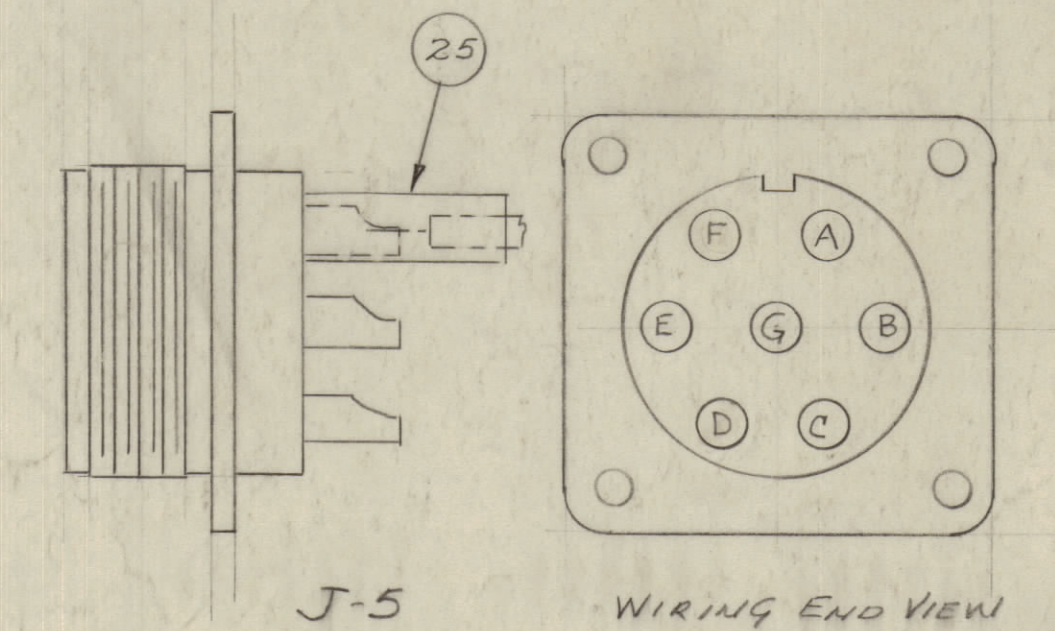
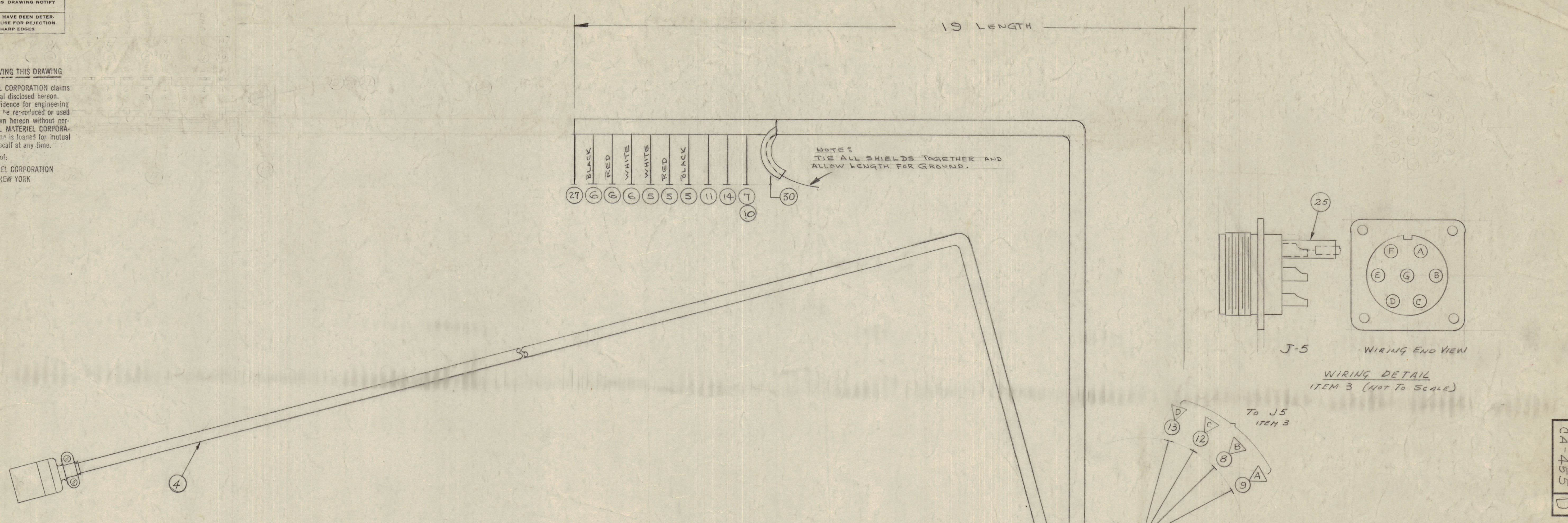


IF IT IS FOUND DESIRABLE TO CHANGE ANY TOLERANCE OR OTHER DETAIL SPECIFIED ON THIS DRAWING NOTIFY THE PURCHASER PROMPTLY.
 MAXIMUM ALLOWABLE TOLERANCES HAVE BEEN DETERMINED AND DEVIATIONS WILL BE CAUSE FOR REJECTION. REMOVE ALL BURRS AND SHARP EDGES.

NOTICE TO PERSONS RECEIVING THIS DRAWING

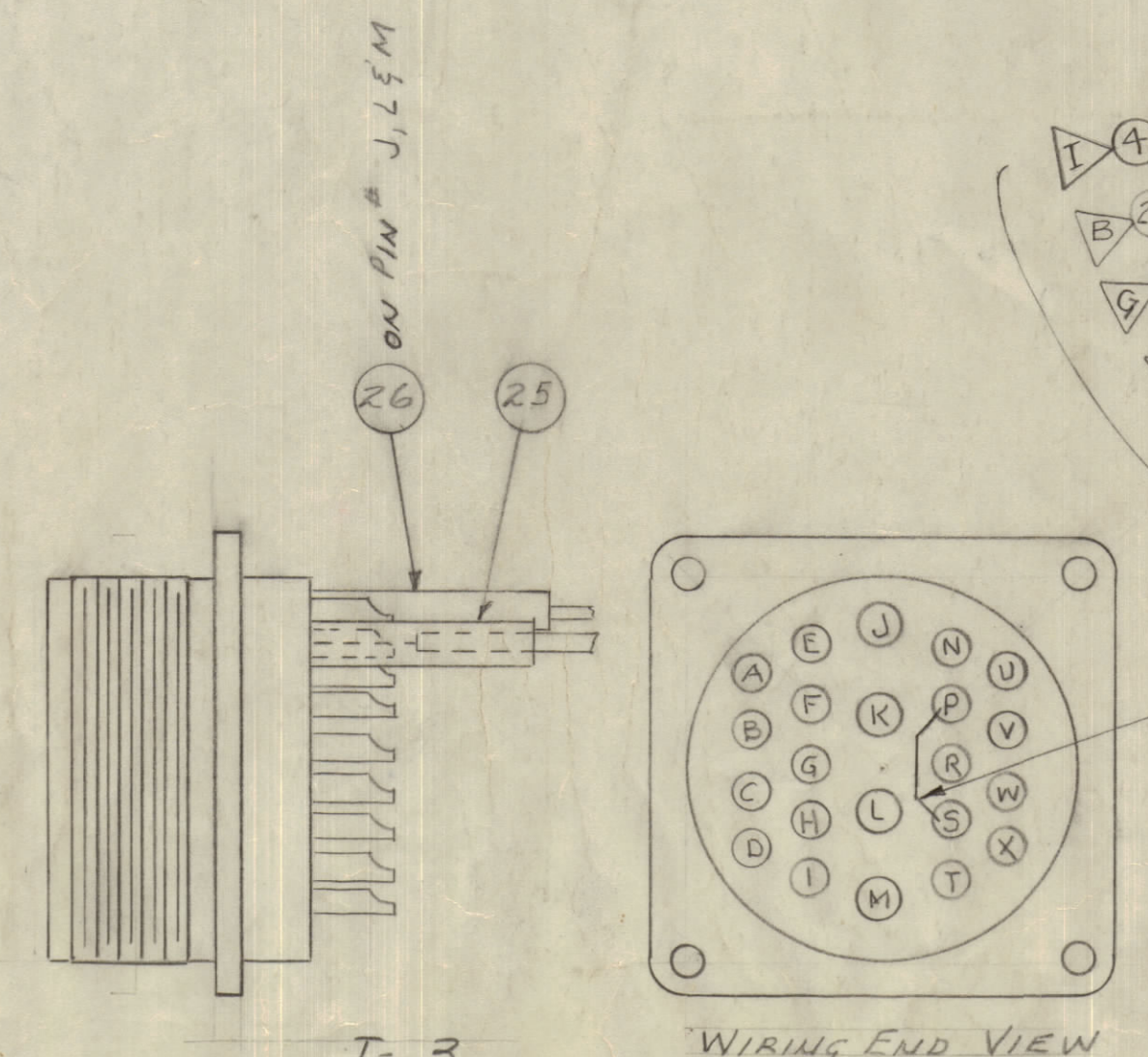
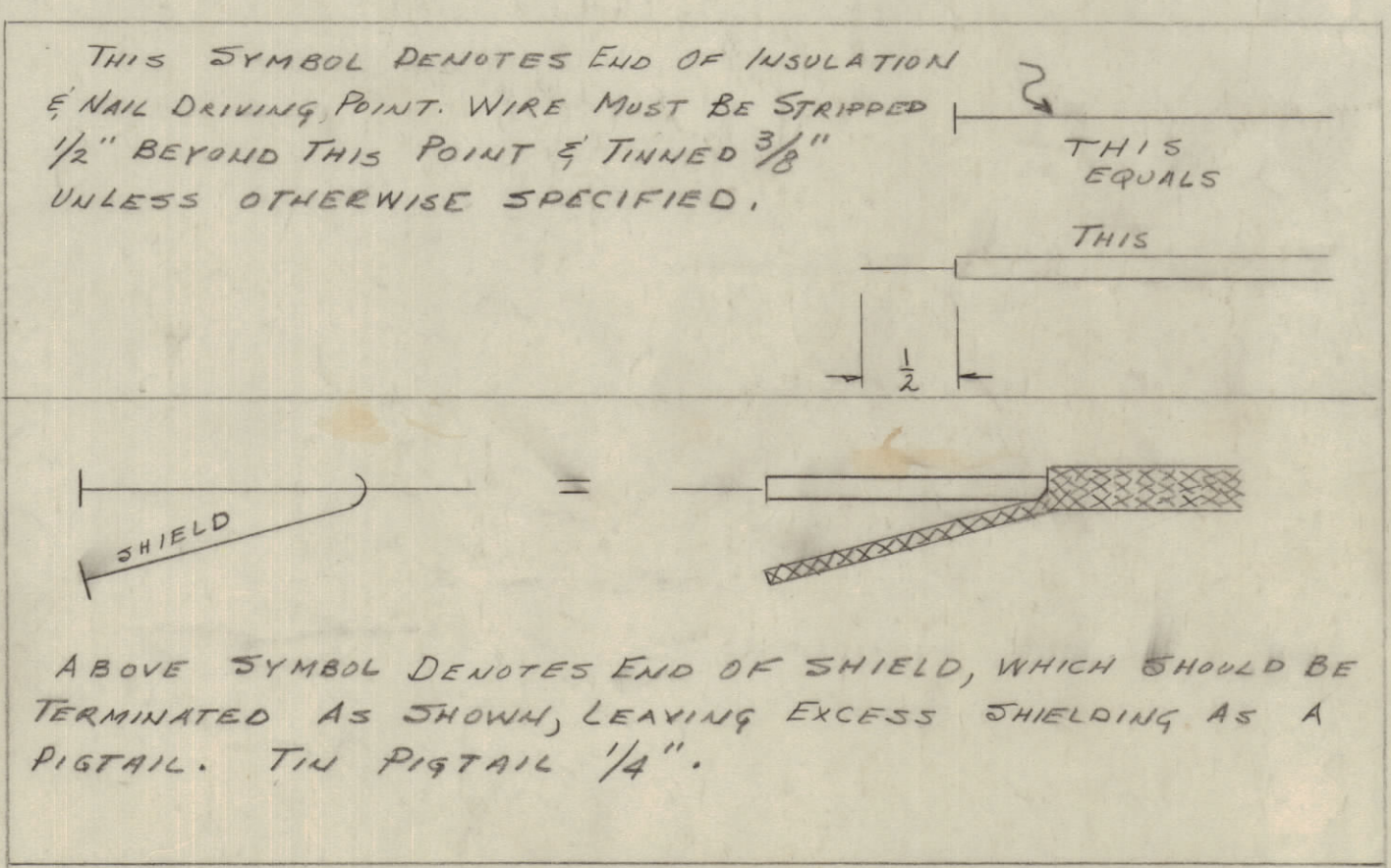
THE TECHNICAL MATERIEL CORPORATION claims proprietary right in the material disclosed hereon. This drawing is issued in confidence for engineering information only and may not be reproduced or used to manufacture anything shown hereon without permission from THE TECHNICAL MATERIEL CORPORATION to the user. This drawing is loaned for mutual assistance and is subject to recall at any time.

Property of:
 THE TECHNICAL MATERIEL CORPORATION
 MAMARONECK, NEW YORK



WIRING DETAIL
 ITEM 3 (NOT TO SCALE)

To J5
 ITEM 3



WIRING DETAIL
 ITEM 2 (NOT TO SCALE)

X	30	PX-830-12-1	INS. SLVG., SHRINK	
	29	MWC22(7)U0	CABLE, INSULATED	BLACK
	28	TA-100-2	TAPE, VINYL PLASTIC	BLACK
	27	MWC22(7)U 0	CABLE, INSULATED	BLUE
1/2"	26	PX-100-1-148	INSULATION, SLEEVING	BLACK
1/2"	25	PX-100-1-106	INSULATION, SLEEVING	BLACK
3"	24	PX-100-1-186	INSULATION, SLEEVING " 7	BLACK
	23	PX-100-1-234	INSULATION, SLEEVING " 3	BLACK
X	22	BS-100	SOLDER, SOFT	
#	21	"	DELETED	
#	20	"	DELETED	
#	19	"	DELETED	
#	18	"	DELETED	
#	17	"	DELETED	
#	16	"	DELETED	
#	15	"	DELETED	
	14	MWC22(7)U 5	CABLE, INSULATED	GREEN
	13	MWC22(7)U 4	"	YELLOW
	12	MWC22(7)U 3	"	ORANGE
	11	MWC22(7)U 2	"	RED
	10	MWC22(7)U 1	CABLE, INSULATED	BROWN
	9	MWC16(8)U 0	CABLE, INSULATED	BLACK
	8	MWC16(8)U 8	CABLE, INSULATED	GRAY
	7	MWC22(7)U 0	CABLE, INSULATED	BLACK
	6	WT-136-1	CABLE, SHIELDED, 3 CONDUCTOR	BLACK
	5	WT-136-1	" " "	"
1	4	CA-696-7-034	CABLE, AC POWER, TWIST LOCK	
1	3	MS3102A16S-15	CONNECTOR, RECEPTACLE, FEMALE	J5
1	2	MS3102A28-11P	CONNECTOR, RECEPTACLE, MALE	J3
#	1	"	DELETED	

D	ITEM(4) WAS CA391-36 IT. 30 ADDED	6-25-67	18x60	H.G.	FB	JG	
C	ITEM(9) WAS SCBS0632 BCS ITEM(20) WAS LWEO6MRC ITEM(20) WAS NTH0632 BCS	3-25-63	8x29				
B	ITEM 29 ADDED	8-24-5406	6.0U	KU	RK		
A	15" LENGTH WAS 28" ITEM 18 (WI-100-2) DELETED ITEM 17 (WI-100-6) ITEM 16 (WI-100-6) ITEM 15 (WI-100-6) ITEM 1 (TM-105-14AR)	5/59	1100	JG		OMA	
ISSUE	ITEM	CHANGED FROM	DATE	CN. NO.	DRAFTS	CHECKER	ENG. APP.
TOLERANCES			SCALE: 1/2"				
ALL	DEC. DIM. ±	FRAC. DIM. ±	DRILL PUNCH COMMERCIAL STOCK SIZES AND MANUFACTURERS TOLERANCES ARE NOT INCLUDED.				
OTHERS	ANGULAR DIM. ±						

1	RTS-2			4-24-59
REQ PER UNIT	MODEL	PROJECT NO.	ASSY. NO.	DATE
USED ON				

THE TECHNICAL MATERIEL CORP.
 MAMARONECK, NEW YORK

CABLE ASSEMBLY

INTERCONNECT

TYPE & TEMPER

HEAT TREAT. SPEC.

FINISH & SPEC. NO.

DRAWN: [Signature] CHECKED: [Signature] ELEC. DES. APP. MECH. DES. APP.

FINAL APPROVAL

CA-455 D

CA-455 D