

IF IT IS FOUND DESIRABLE TO CHANGE ANY TOLERANCE OR OTHER DETAIL SPECIFIED ON THIS DRAWING NOTIFY THE PURCHASER PROMPTLY.

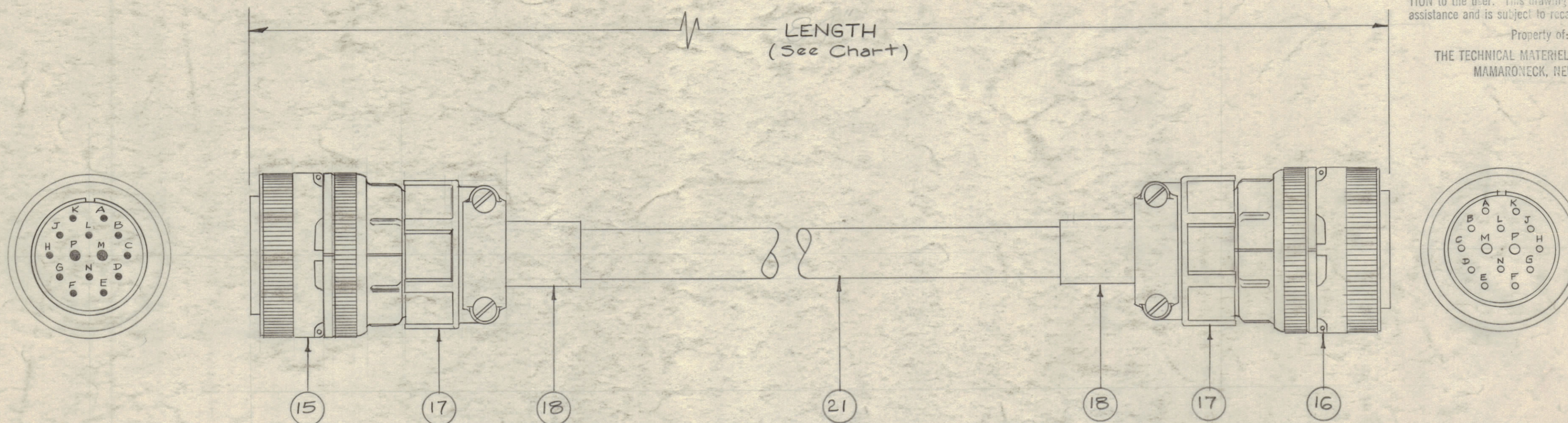
MAXIMUM ALLOWABLE TOLERANCES HAVE BEEN DETERMINED AND DEVIATIONS WILL BE CAUSE FOR REJECTION. REMOVE ALL BURRS AND SHARP EDGES.

NOTICE TO PERSONS RECEIVING THIS DRAWING

THE TECHNICAL MATERIEL CORPORATION claims proprietary right in the material disclosed hereon. This drawing is issued in confidence for engineering information only and may not be reproduced or used to manufacture anything shown hereon without permission from THE TECHNICAL MATERIEL CORPORATION to the user. This drawing is loaned for mutual assistance and is subject to recall at any time.

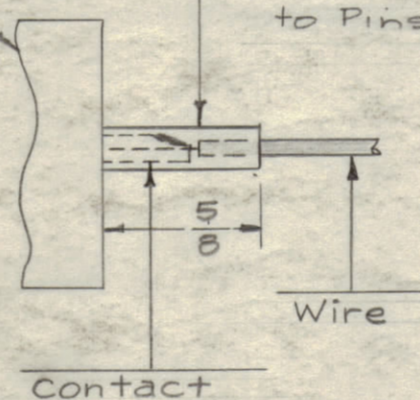
Property of:

THE TECHNICAL MATERIEL CORPORATION  
MAMARONECK, NEW YORK



TMC NO.	LENGTH	USED ON
CA-432-1	84"	FSA w/GPT-10K
CA-432-2	53"	FSA w/PTE

Connector Insert  
Sleeving - Use Item 19 (Size 10) for Connections to Pins # A,C,D,E,F,G,H,J,K,N  
Use item 20 (Size 7) for Connections to Pins # B,L,M,P



Connector Wiring Diagram  
(Not to scale)

REQ. ITEM	PART NO.	CONNECT FROM ITEM 15 PIN #	TO ITEM 16 PIN #	SYMBOL
X 22	BS-100			Solder, Soft
X 21	PX-100-1-.625			Insulation, Sleeving (Size 5/8) BIK.
<b>CA-432</b> <b>A</b>				
X 20	PX-100-1-.148			Insulation, Sleeving (Size 7) BIK
X 19	PX-100-1-.106			Insulation, Sleeving (Size 10) BIK
2 18	MS3420-12A			Bushing, Cable
2 17	MS3057-16			Clamp, Cable
1 16	MS3106B28-29			Connector, Plug, Female
1 15	MS3106B28-2P			Connector, Plug, Male
14	MWC18(16)U 3	P	P	Orange
13	HWC22(7)U 2	N	N	Red
12	MWC18(16)U 90	M	M	White Black
11	HWC18(16)U 4	L	L	Yell.
10	MWC18(16)U 7	K	K	Viol.
9	MWC18(16)U 6	J	J	Blue
8	MWC22(7)U 92	H	H	White Red
7	MWC22(7)U 8	G	G	Grey
6	MWC22(7)U 96	F	F	White Blue
5	MWC18(16)U 0	E	E	Black
4	MWC18(16)U 5	D	D	Green
3	MWC22(7)U 98	C	C	White Grey
2	HWC18(16)U 9	B	B	White
1	MWC22(7)U 94	A	A	White Yell.
<b>THE TECHNICAL MATERIEL CORP.</b> MAMARONECK, NEW YORK				
CABLE ASS'Y, SA-1 to PS-3				
INTERCONNECT				
16 3/3/59				
DRAWN: [Signature] ELEC. DES. APP. [Signature] MECH. DES. APP. [Signature]				
HEAT TREAT. SPEC. CHECKED: [Signature] FINAL APPROVAL: [Signature]				
<b>CA-432</b> <b>A</b>				

ISSUE	ITEM	CHANGED FROM	DATE	CH. NO.	DRAFTS	CHECKER	ENG. APP.
A	1	Chart Added	2-7-61	4097	RU	GRB	GRM

TOLERANCES	SCALE:
ALL OTHERS DEC. DIM. ± FRAC. DIM. ± ANGULAR DIM. ±	DRILL, PUNCH, COMMERCIAL STOCK SIZES AND MANUFACTURERS TOLERANCES ARE NOT INCLUDED.

REQ. PER UNIT	MODEL	PROJECT NO.	ASSY. NO.	DATE
1	FSA	GPT-10K EXCITER		3-3-59
USED ON				