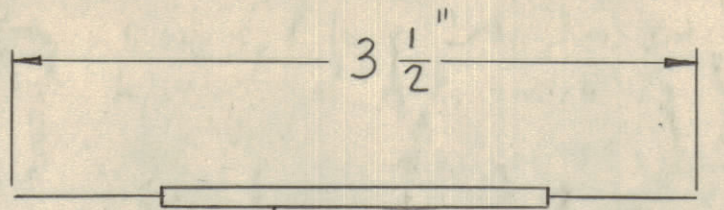
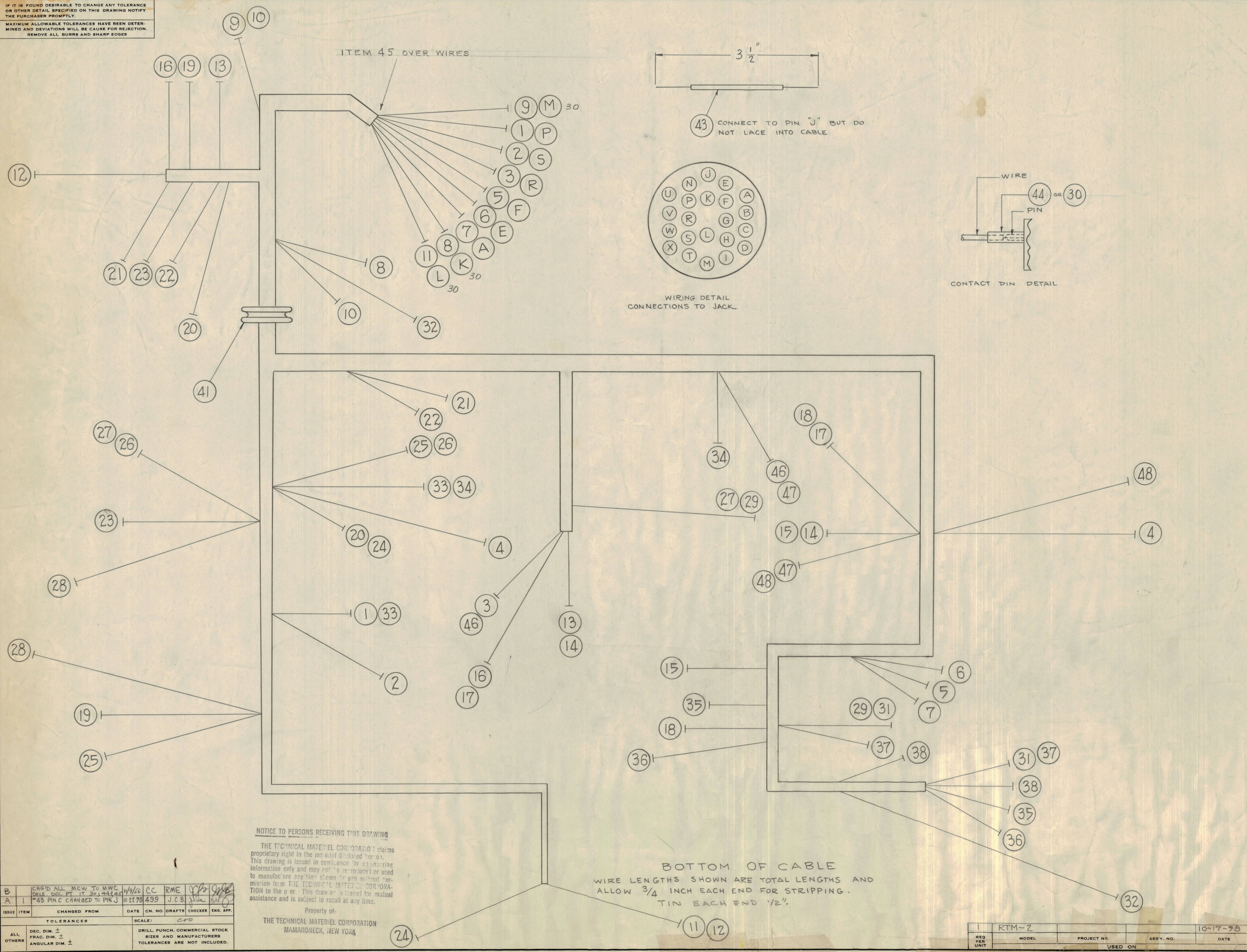
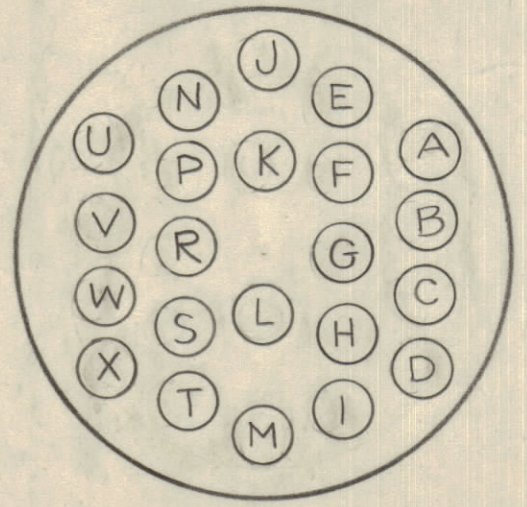


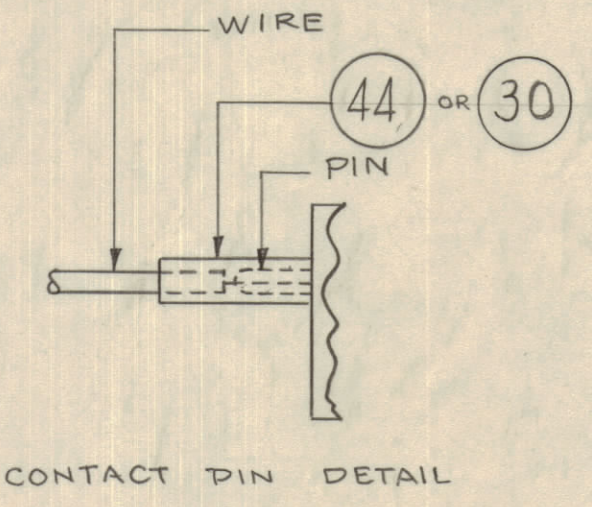
IF IT IS FOUND DESIRABLE TO CHANGE ANY TOLERANCE OR OTHER DETAIL SPECIFIED ON THIS DRAWING NOTIFY THE PURCHASER PROMPTLY.
 MAXIMUM ALLOWABLE TOLERANCES HAVE BEEN DETERMINED AND DEVIATIONS WILL BE CAUSE FOR REJECTION. REMOVE ALL BURRS AND SHARP EDGES



43 CONNECT TO PIN "J" BUT DO NOT LACE INTO CABLE



WIRING DETAIL CONNECTIONS TO JACK



9"	48	MWC 22 (7)U7	CABLE INSULATED	VIO.
5"	47			VIO.
13"	46			VIO.
4"	45	PX-100-1-Z63	INSULATION, SLEEVING	
X	44	PX-100-1-106	"	
3 1/2"	43	MWC 22 (7)U0	CABLE, INSULATED	BLK
1"	42	M83162A28-11P	PLUG	
1"	41	EY-10Z-8	GROMMET	
X	40	BS-100	SOLDER, SOFT	
X	39	CD-101-3MW	CORD, LACING	
7"	38	MWC 22 (7)U5	CABLE INSULATED	GRN
10"	37		6	BLUE
10 1/2"	36		93	WH/OR
10"	35		3	OR
9"	34		5	GRN
9 1/2"	33		5	GRN

43 3/4"	32	MWC 22 (7)U4	CABLE, INSULATED	YEL
10 3/4"	31	MWC 22 (7)U 2	CABLE, INSULATED	RED
X	30	PX-100-1-148	INSULATION, SLEEVING	
30 1/4"	29	MWC 22 (7)U 2	CABLE, INSULATED	RED
15 1/4"	28		2	RED
22 1/2"	27		92	WH/RED
8 3/4"	26		92	WH/RED
13 1/4"	25		92	WH/RED
21 1/2"	24		2	RED
15 1/2"	23	PINK		PINK
12 1/4"	22		6	BLUE
13 3/4"	21		98	WH/BLUE
14"	20		2	RED
20 1/4"	19		92	WH/RED
13 1/2"	18		91	WH/BRN
23 1/2"	17		91	WH/BRN
23"	16		91	WH/BRN
11 3/4"	15		1	BRN
20 1/2"	14		1	BRN
20 1/2"	13		1	BRN
31 1/4"	12		9	WHITE
32 3/4"	11		9	WHITE
8"	10		0	BLK
9"	9		0	BLK
11 3/4"	8		8	GRAY
36"	7		96	WH/BLUE
36 3/4"	6		95	WH/GRN
36 1/2"	5		90	WH/BLK
32 1/4"	4		96	WH/BLUE
24 3/4"	3		7	VIO
21"	2		93	WH/OR
20"	1		3	OR

B	CHG'D ALL NEW TO MWC	11/9/56	CC	RME		
A	DELE. DEC. PT. IT 30, 44, 45			J.C.B.		
	*43 PIN C CHANGED TO PIN J	10-17-58	459			
ISSUE	ITEM	CHANGED FROM	DATE	DN. NO.	DRAFTS	CHECKER
TOLERANCES		SCALE: CRB				
ALL	DEC. DIM. ±	DRILL, PUNCH, COMMERCIAL STOCK				
OTHERS	ANGULAR DIM. ±	SIZES AND MANUFACTURERS TOLERANCES ARE NOT INCLUDED.				

NOTICE TO PERSONS RECEIVING THIS DRAWING
 THE TECHNICAL MATERIEL CORPORATION claims proprietary right in the model disclosed hereon. This drawing is issued in confidence for engineering information only and may not be reproduced or used to manufacture any item shown hereon without permission from THE TECHNICAL MATERIEL CORPORATION to the user. This drawing is loaned for mutual assistance and is subject to recall at any time.
 Property of:
 THE TECHNICAL MATERIEL CORPORATION
 MAMARONECK, NEW YORK

BOTTOM OF CABLE
 WIRE LENGTHS SHOWN ARE TOTAL LENGTHS AND ALLOW 3/4 INCH EACH END FOR STRIPPING. TIN EACH END 1/2 INCH.

1	RTM-2			10-17-58
REQ PER UNIT	MODEL	PROJECT NO.	ASSY. NO.	DATE
USED ON				

THE TECHNICAL MATERIEL CORP. MAMARONECK, NEW YORK			
CABLE ASSEMBLY, MODULATOR RTM-2			
J.C. BIELE			
DRAWN	ELEC. DES. APP.	MECH. DES. APP.	
CHECKED	FINAL APPROVAL		
CA-400 B			

CA-400 B