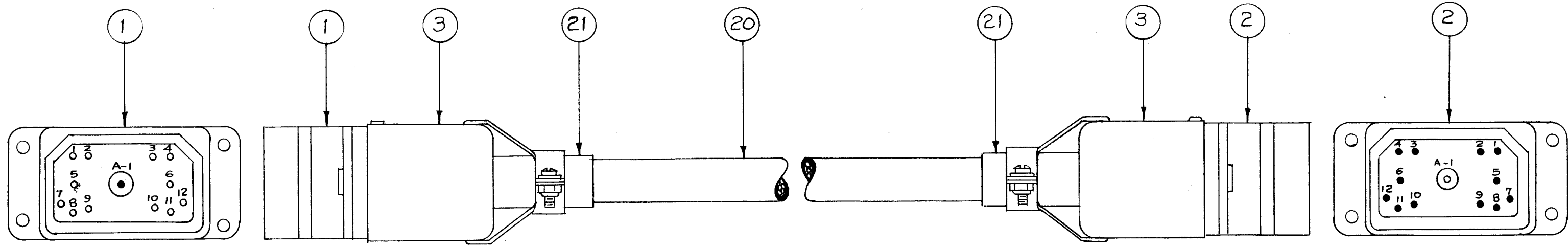


CA-367 B



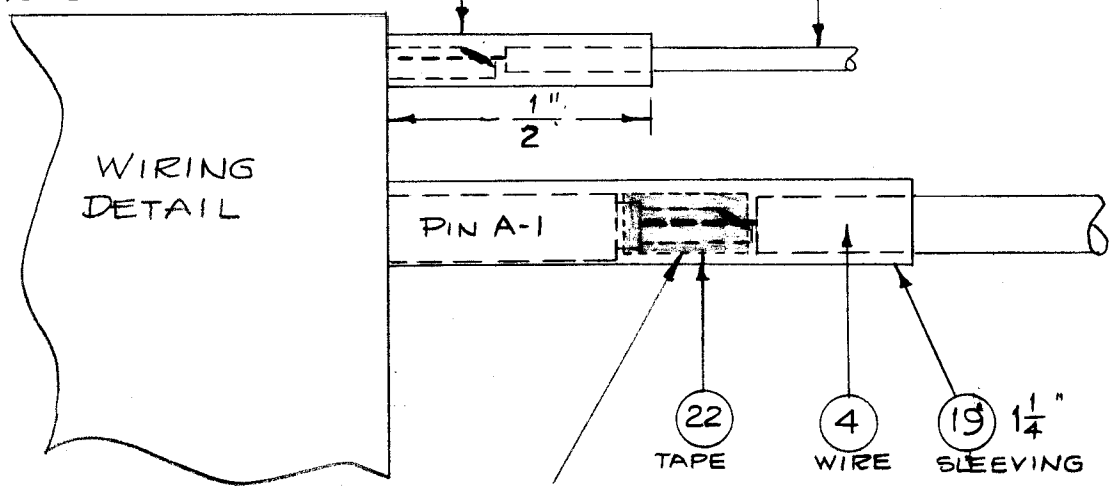
Contact Code
 O = Socket (Female)
 ● = Pin (Male)

LENGTH

OBSOLETE-SUPERSEDED & DIRECTLY REPLACED BY CA-1036-110
 7-9-63 EMN 9517

ITEM # 17 sleeving for all #22 Cable.
 ITEM # 18 sleeving for all #16 Cable.

#22 Cable (as per Chart) for Pins 1, 3, 4, 5, 6, 8, 9, 10, 11, 12.
 #16 Cable for Pins 2 & 7



Note - After Soldering, Wind three turns of tape (item 22) around connection, then slip sleeving (item 19) on as shown. (PIN A-1 ONLY) After Taping, there will be NO BARE WIRE showing

WIRING CHART		
ITEM NO.	CONNECT PINS	
4	A-1	to A-1
5	1	to 1
6	2	to 2
7	3	to 3
8	4	to 4
9	5	to 5
10	6	to 6
11	7	to 7
12	8	to 8
13	9	to 9
14	10	to 10
15	11	to 11
16	12	to 12

X	23	BS-100	Solder, Soft	
X	22	TA-100-1	Tape, Vinyl Plastic (1/4 Wide)	Blk.
2	21	AN3420-12A	Bushing, Cable (.541 ID)	Blk.
X	20	PX-100-1-.438	Insulation, Sleeving (Size 7/16)	Blk.
2 1/2"	19	PX-100-1-.263	Insulation, Sleeving (Size 2)	Blk.
1"	18	PX-100-1-.118	Insulation, Sleeving (Size 9)	Blk.
5"	17	PX-100-1-.106	Insulation, Sleeving (Size 10)	Blk.
X	16	MWC22(7)U90	Cable, Insulated, Stranded	Wh/Blk
X	15	MWC22(7)UPink		Pink
X	14	MWC22(7)U9		White
X	13	MWC22(7)U8		Grey
X	12	MWC22(7)U7		Viol.
X	11	MWC16(19)U6		Blue
X	10	MWC22(7)U5		Grn.
X	9	MWC22(7)U4		Yell.
X	8	MWC22(7)U3		Dr.
X	7	MWC22(7)U2		Red.
X	6	MWC16(19)U1		Brn.
X	5	MWC22(7)U0	Cable, Insulated, Stranded	Blk.
X	4	WI-126-1	Wire, Heavy Duty (Size 18)	Red
2	3	PO-150-1	Shell, Connector	
1	2	PL-160-P	Connector, Plug, Male	PI02
1	1	PL-160-S	Connector, Plug, Female	PI01

Type Designation to be as follows:

CA-367-72

TMC DWG. NO

REQ. LENGTH (INCHES)

(Length will always be expressed to the nearest inch.)

ISSUE	ITEM	CHANGED FROM	DATE	CH. NO.	DRAFTS	CHECKER	ENG. APP.
B	1	OBSOLETE - REPLACED BY CA-1036-110	7-9-63	9517		A.P.	J.R.
A	1	ITEM 19 WAS PX-100-1-.234 (SIZE 3)	5/22/58	1	16	M.P.	A.J.S.

TOLERANCES
 DEC. DIM. ±
 FRAC. DIM. ±
 ANGULAR DIM. ±

SCALE:
 MAXIMUM ALLOWABLE TOLERANCES HAVE BEEN DETERMINED AND ANY DEVIATIONS WILL BE CAUSE FOR REJECTION. REMOVE ALL BURRS AND SHARP EDGES

REQ. PER UNIT	MODEL	PROJECT NO.	ASS'Y. NO.	DATE
1	PSP-350	PAL-350		5-2-58
				USED ON

REQ. ITEM	PART NO.	DESCRIPTION	SYMBOL
THE TECHNICAL MATERIEL CORP. MAMARONECK, NEW YORK			
CABLE ASS'Y., POWER (PSP-350 to RFA-1)			
TYPE & TEMPER		HEAT TREAT. SPEC.	FINISH & SPEC. NO.
DRAWN		CHECKED	FINAL APPROVAL
ELEC. DES. APP.		MECH. DES. APP.	

CA-367 B